



Scroll

1947

THE

1947

SCROLL

Published by

THE SENIOR CLASS

of

BOONE HIGH SCHOOL

BOONE, IOWA

LEE COOPER ... Editor - in - Chief • BEVERLY MEYER Advertising
Manager • ZOE STEVENS, MARGARET GLUENKIN, NAOMI HICKS, Advisers

FOREWORD

Companionship, friendliness, sharing, membership
---all necessary factors in happy living---blend
into one great word, FELLOWSHIP.

Without it, teams, schools, cities, even nations
divide and fall; it is the bond in all human relationship.

Since time began, problems have been ironed
out only by pleasant fellowship; so must it be in
building future world peace---
the major problem confronting the youth of today.

This Scroll of 1947 has been formed to portray
a year of fellowship in music, sports, clubs,
and study at Boone High; and to the spirit of
fellowship, we dedicate it in the hope that these exper-
iences will remain a memory and
a guide in future living.

Adminstration

Chief administrator of the school system is Superintendent A. B. Grimes, who came to Boone in 1944. Mr. Grimes is most ably assisted by his secretary, Miss Louise Benson.



Miss Louise Benson

Mr. Grimes, Superintendent

Advisers to the students of the junior and senior high schools are: Mr. Carl McCullough, boys' adviser, and Miss Vaughn Thornburgh, girls' adviser.

The Board of Education for the Boone Independent District school system, comprising seven grade schools, the junior and senior high schools, and the junior college, is composed of seven members. These citizens unselfishly devote many hours to the consideration of school business and the directing of school affairs. Members of the Board at present are: Dr. W. H. Longworth, President; L. R. Johnson, Secretary; Pauline Curry, Treasurer; James Morris; E. E. Wiemer; Don F. Kruse and Willard McCartney. The Reverend A. M. Clarke served on the board until the March election, at which time he retired.



Mr. McCullough

Miss Thornburgh

Directing the affairs of the junior and senior high schools and the junior college is Principal Clifford H. Beem. Miss Adeline Nelson is serving her first year as secretary to the principal.



Mr. Beem, Principal

Miss Adeline Nelson

BOONE SENIOR HIGH FACULTY

Mr. Lawrence Baldus	Physical Education and Coaching	Mrs. Margaret Gluenkin	Business Education
Mrs. Helen Brunner	Home Economics	Mr. L. A. Gluenkin	Social Studies
Mrs. Carolyn Carlson	School Nurse	Miss Jeannette Harken	Physical Education
Miss Luverne Clark	Mathematics	Mr. William Hartley	Business Education
Mr. R. N. Cook	Music	Miss Naomi Hicks	Mathematics
Mr. H. L. Cunningham	Physics, Radio, Aeronautics	Miss Adabelle Hilgenberg	English
Miss Jane Ealy	Business Education	Miss Josephine Hultquist	Vocal Music
Mr. Vernon Elslager	Industrial Arts and Coaching	Mrs. Marie Ick	Library Supervisor
Miss Helen Emmons	Physical Education	Miss Marjorie James	Speech, Dramatics
		Mrs. Eloise Knuckles	Home Economics
		Mr. Ray D. Lamb	Social Studies

TOP ROW: Thornburgh, Hultquist, Montgomery, Gluenkin, Baldus, Thomas, Emmons. MID-
DLE ROW: Thorngren, Stevens, Harken, Linderblood, James, Cunningham. BOTTOM ROW:
Scholl, Skilling, Slosson, Whitney, Hartley, Simon, Clark.





TOP ROW: Brunner, Ealy, Lein, Lancaster, Knuckles, Elslager, O'Connor, McCullough. MID-DLE ROW: Carlson, Lamb, Tillson, Liddell, Pagel, Gluekin. BOTTOM ROW: Cook, Hilgenberg, Ick, Hicks, Stutzman, Taylor.

BOONE SENIOR HIGH FACULTY

Mr. Edgar Lancaster	Industrial Arts	Miss Grace Slosson	English, Spanish
Mr. A. H. Lein	Industrial Arts	Mrs. Zoe Stevens	English
Miss Rena Liddell	Speech, Science	Mr. Howard Stutzman	Physical Education, Coaching and Biology
Miss Louise Linderblood	English and Latin	Mrs. Isabel Taylor	English
Mr. Carl McCullough	Social Studies and Boys' Adviser	Mr. Morgan Thomas	Business Education
Mr. A. H. Montgomery	Chemistry	Miss Vaughn Thornburgh	Mathematics and Girls' Adviser
Mr. Frank O'Connor	Physical Education	Mr. J. R. Thorngren	Junior College Dean, Social Science
Miss Frieda Pagel	Social Studies	Mr. Jack Tillson	Librarian
Mr. Konrad Scholl	Instrumental Music	Miss Ethel Whitney	Social Studies
Miss Alberta Simon	Art		
Miss Marguerite Skilling	Social Studies		

Honors in music, dramatics, sports, and journalism were won by members of the class of 1947. This class has been a vital part of B.H.S. school life for the last three years.

Class Colors . . . Green and White

Class Flower . . . White Rose

Class Motto . . . "The higher we climb, the broader the view."



Patterson, president; Stark, secretary; Schroeder, vice-president



Dominic Belmonte

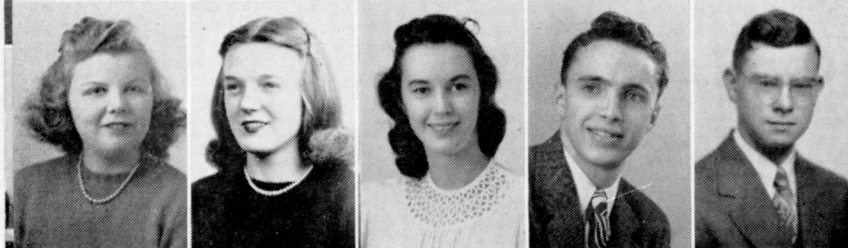
SENIORS



ABBENSETH, MARTHA, Stenographic: Bumble "B" 3; Scroll 3; Quill and Scroll 3; Girls' Glee Club 2, 3; "Antic Spring"; Pep Club 2, 3; B-Y-Ettes 1; Hi-Tri 2, 3; National Honor Society . . . **ABRAMSON, PEARL, General:** Mixed Chorus 2; Girls' Glee Club 2 . . . **ADAMS, VIRGINIA, Language:** Mixed Chorus 2, 3; Girls' Glee Club 3 . . . **ANDERSON, RICHARD, Scientific:** Football 1, 2, 3; Basketball 1, 2; Golf 1, 2, 3; Hi-Y 1, 2, 3 . . . **ANDERSON, ROBERT, Arts and Crafts.**



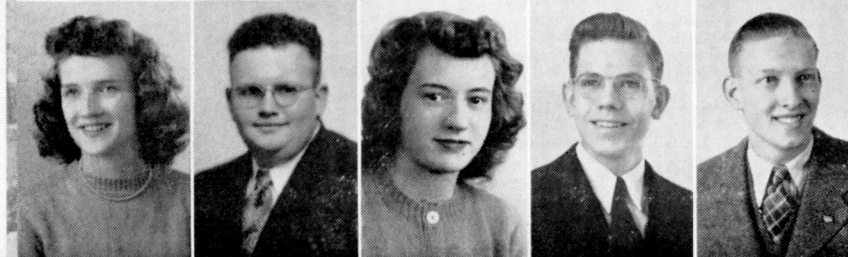
ANDERSON, Russell, General: Football Manager 1, 2, 3; Basketball 1, 2, 3; Track 3; Baseball 1, 2, 3; Scroll 2, 3; Hi-Y 2, 3; Treasurer 3; "Night of January 16" . . . **ASPENGREN, NORMA JEAN, Stenographic . . . ASPENGREN, ROSE, General:** Chorus 2; "Toby Tyler"; Hi-Tri 1, 2 . . . **BAIRD, BEVERLY, Stenographic:** Bumble "B" 1, 2; Business Manager 3; Scroll 2, 3; Quill and Scroll 2, 3; Band 1; Orchestra 1; Pep Club 2, 3; B-Y-Ettes 1, 2; Hi-Tri 2, 3; National Honor Society; "Night of January 16" . . . **BARNES, JAMES, Scientific.**



BENSON, PHYLLIS, General: Mixed Chorus 1, 2; Girls' Glee Club 1; Pep Club 3 . . . **BERGLUND, DORIS, General:** Cheerleader 3; Pep Club 1, 2; B-Y-Ettes 1; Hi-Tri Treasurer 3; "Night of January 16" . . . **BICE, RUTH, Stenographic . . . BOWES, JOHN, Scientific:** Public Address 3; National Honor Society . . . **BOYD, ROLAND, Arts and Crafts:** Track 2, 3.



BRACKLOW, JOYCE, General: Hi-Tri 3 . . . **BROADWELL, GRAYCE, Scientific:** Band 1, 2, 3; Mixed Chorus 3; Girls' Glee Club 3; Clarinet Quartet; "Night of January 16" . . . **BROWN, PATRICIA, Stenographic:** Bumble "B" 3; Scroll 3; Girls' Glee Club 2, 3; B-Y-Ettes 1, Secretary 2; Hi-Tri 3 . . . **BUECHLER, LILA LEE, General:** Scroll 3; Dramatic Club 2; Cheerleader 1, 2, 3; B-Y-Ettes 1, Secretary 2; Hi-Tri 3 . . . **BUSS, DELORES, Stenographic:** Bumble "B" 1, 2, 3; Scroll 2; Quill and Scroll 3; Band 1, 2, 3; Orchestra 2; "Cornhusk Doll"; Hi-Tri 2, 3, Treasurer 2; Girls' Glee Club 1, 2; Brass Sextette 2.



BUTLER, GERALDINE, General: Band 1, 2, 3; Orchestra 1, 2, 3; Mixed Chorus 2, 3; Drum Ensemble 2, 3 . . . **CAPPS, DONALD, Arts and Crafts . . . CARLSON, HELEN, Stenographic:** Mixed Chorus 1, 2; Girls' Glee Club 3; Hi-Tri 3 . . . **CARLSON, ROBERT, Scientific:** Mixed Chorus 2, 3; Boys' Glee Club 1; Art 2, 3; Track 3 . . . **CASE, CARROLL, Scientific:** Track 1, 2, 3.

CHILES, J. SAMUEL, General . . . **CHORNE, VINCENT, General:** Band 1, 2, 3; Orchestra 2, 3; Mixed Chorus 3; Clarinet Quartet 1, 2, 3; Saxophone Quartet 3 . . . **CLEMENS, JEAN (Dropped)** . . . **COGHLAN, JACQUELINE, Stenographic** . . . **COOPER, LEE, Scintille:** Football 1, 2, 3; Track 1, 2, 3; Swimming 1, 2, 3; Scroll 2, Editor 3; Quill and Scroll 2, President 3; Mixed Chorus 1, 2, 3; Boys' Quartet 3; Declamatory 3; "What a Life"; Student Council 1, Vice-President, President 3; Hi-Y 2, Chaplain 3; National Honor Society.

COTTON, DELORIS, General: Girls' Glee Club 3 . . . **CROUSE, FRED, Scintille:** Football 3; Hi-Y 2, 3 . . . **CURELL, WILLIS, Scintille:** Football 1, 2, 3; Basketball 1, 2, Manager 3; Baseball 1, 2, 3; Bumble "B" 3; Scroll 3; "Seventeen"; Student Council 1; Hi-Y 2, President 3; National Honor Society; "Night of January 16" . . . **DICKEY, DIXIE, General:** Band 1, 2, 3; Orchestra 1, 2, 3; Mixed Chorus 2, 3; Girls' Glee Club 2; Clarinet Quartet 1, 2, 3; Woodwind Trio 2, 3 . . . **DORAN, MARILYN, Stenographic:** Bumble "B" 3; Mixed Chorus 1, 2; Girls' Glee Club 2, 3; Pep Club 3; B-Y-Ettes 1; Hi-Tri 3.

DORAN, PATRICIA, Scintille: Girls' Basketball 2; Band 1, 2, 3; Orchestra 1, 2, 3; Mixed Chorus 2, 3; Girls' Glee Club 2, 3; Clarinet Trio 1; Brass Sextet 2, 3; Brass Quartet 2, 3; Cornet Quartet 2, 3; Girls' Sextet 2, 3; "Cornhusk Doll"; B-Y-Ettes 1, 2; Hi-Tri 3; "Night of January 16" . . . **ECHTERNACH, JOYCE, Bookkeeping:** Mixed Chorus 3; Girls' Glee Club 1, 2, 3; B-Y-Ettes 1, 2; Hi-Tri 3 . . . **ELSBERRY, WILMA, Stenographic** . . . **ERICSON, ALVIN, General:** Football 2, 3; "Cornhusk Doll"; "Night of January 16" . . . **ERICKSON, JAMES, Language:** Bumble "B" 1, 2, 3; Quill and Scroll 2, 3; Band 2, 3; Orchestra 2, 3; Mixed Chorus 1, 2, 3; Girls' Glee Club Accompanist 3; Boys' Quartet 2; National Honor Society.

FAIRCHILD, OPAL, Stenographic . . . **FARLEY, MARJORIE, General:** Mixed Chorus 1; Girls' Glee Club 2, 3; B-Y-Ettes 2, 3; Hi-Tri 3 . . . **FITZGERALD, DOUGLAS, General:** Band 1, 2, 3; Orchestra 1, 2, 3; Mixed Chorus 2, 3; Brass Quartet 2, 3; Brass Sextet 1, 2; Declamatory 3; "Snafu"; Student Council 1 . . . **FORBES, JO ANN, General:** Scroll 2, 3; Quill and Scroll 2, 3; "June Mad"; "What a Life"; "Thank You, Doctor"; "Snafu"; "Antic Spring"; Pep Club 2, 3; Hi-Tri 2, 3; National Honor Society; Declamatory 3 . . . **FREDERICK, BERNARD, General.**

GEBERT, JOHN, Scintille . . . **GRIMES, THOMAS, General:** Football 1, 2, 3; Basketball 1, 2, 3; Track 1, 2, 3; Mixed Chorus 1, 2, 3; Boys' Quartet 2, 3; Student Council 2; Hi-Y 3; National Honor Society . . . **HAGAMAN, GEORGE, Arts and Crafts** . . . **HANDSCHIN, BEVERLY, General:** Scroll 3; Girls' Glee Club 2; Pep Club 1, 2, 3; B-Y-Ettes 1, 2; Hi-Tri 3; "Night of January 16" . . . **HANEL, DARRELL, Arts and Crafts:** Golf 2, 3; Hi-Y 2, 3.

HEITKAMP, CHARLES, General: Football 1 . . . **HOLMES, WILLIAM, Scintille:** Football 1, 2, 3; Basketball 1; Baseball 1, 3 . . . **HUGHES, AUDREY, Stenographic:** Scroll 3; Quill and Scroll 3; Mixed Chorus 1; Girls' Glee Club 1, 2, 3 . . . **INGALLS, RUTH, Stenographic** . . . **JACOBSON, LOIS (Dropped).**

JACOBY, BEVERLY, Stenographic . . . **JOHNSON, BETTY, General:** Basketball 3; Hi-Tri 3 . . . **JOHNSON, GEORGE, General:** Boys' Glee Club 3; Hi-Y 3 . . . **JONES, RALPH, General:** Track 1; Hi-Y 3; "Night of January 16" . . . **JONES, SHARRON, Stenographic:** "Night of January 16."

KANESS, JAMES, Arts and Crafts . . . **KEMMERER, DONALD, Scintille** . . . **KING, ESTHER, General:** Mixed Chorus 1, 2; Girls' Glee Club 1 . . . **KLUTE, DUANE, Arts and Crafts:** Football 2, 3 . . . **KLUTE, JEAN, Stenographic.**

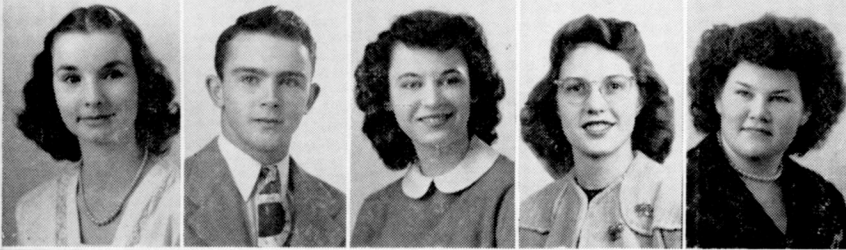




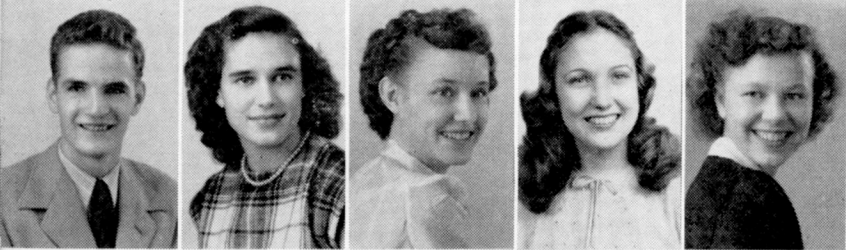
LARREW, PATRICIA, General . . . **LeMASTER, JEAN, General** . . . **LIND, NADINE, Scientific:** Bumble "B" 3; Girls' Glee Club 2, 3; Pep Club 3; Hi-Tri 3 . . . **LIND, PAULINE, Stenographic:** Mixed Chorus 1, 2; Girls' Glee Club 1, 2, 3 . . . **LINDERBLOOD, MARGARET, Language:** Bumble "B" 3; Pep Club 1, 2, 3; National Honor Society; "Night of January 16."



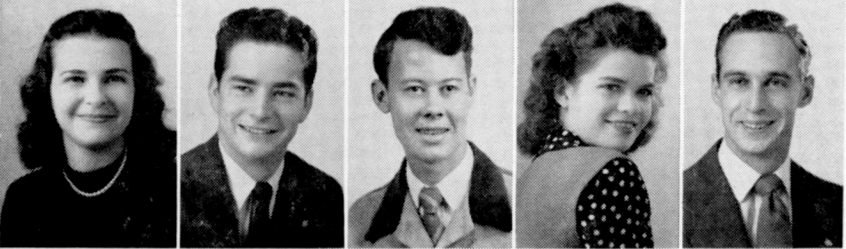
LINDMARK, JEANNINE, Stenographic: Bumble "B" 1, 2, Exchange Editor 3; Scroll 3; Quill and Scroll 3; Mixed Chorus 1, 2, 3; Girls' Glee Club 1, 3; Girls' Trio 1; "What a Life"; "Snafu"; "Seventeen"; Pep Club, junior class secretary; National Honor Society; 1946 Homecoming Queen . . . **LINN, JAMES, General:** Mixed Chorus 2, 3; Declamatory 2; D.D.T. 3; "Snafu" . . . **LITRELL, WILMAR, Arts and Crafts:** Track 1, 2; Swimming 3; "Night of January 16" . . . **LONG, MAXINE, Stenographic:** Bumble "B" 1; Girls' Glee Club 2 . . . **LUNDBERG, HELEN, Scientific:** Mixed Chorus Elopement"; Hi-Tri 3. 1, 2, 3; Girls' Glee Club 1, 2; "What a Life"; "The



McBIRNIE, DORIS, General: Band, Baton Twirler 1, 2, 3; Hi-Tri 3 . . . **McCORMICK, ROBERT, Scientific:** Football 2, 3; Baseball 1, 2, 3; Mixed Chorus 1, 2, 3; Hi-Y 3; "Night of January 16" . . . **McCOY, ROSE, Arts and Crafts** . . . **McENTAFFER, BETTY, Scientific:** Band, Drum Major 2, 3; Hi-Tri 3 . . . **McINTYRE, RUTH, General:** Volleyball 1; Mixed Chorus 1, 2, 3; Girls' Glee Club 1, 2, 3; Sextet, Solo 2, 3; Hi-Tri 3.



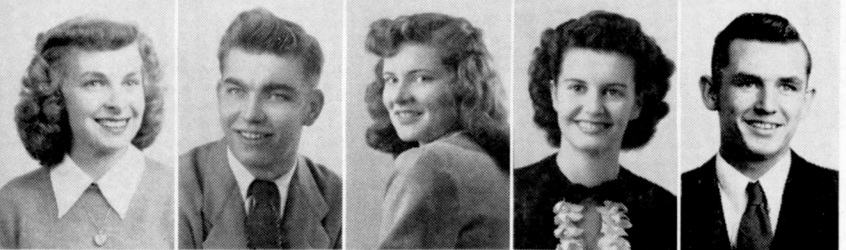
MALLAS, JOHN, Scientific: Football 1; Track 1; Swimming 1 . . . **MANNY, LOIS, General:** Basketball 3; Band 3; Orchestra 3; Girls' Glee Club 2; Girls' Sextet 3 . . . **MARKEY, MARJORIE, Stenographic:** Volleyball 1; Art 2, 3 . . . **MAXHEIM, JEAN, Scientific:** Pep Club 2; Art 2 . . . **MEIERS, MARY, General:** Band 1, 2; Mixed Chorus 1.



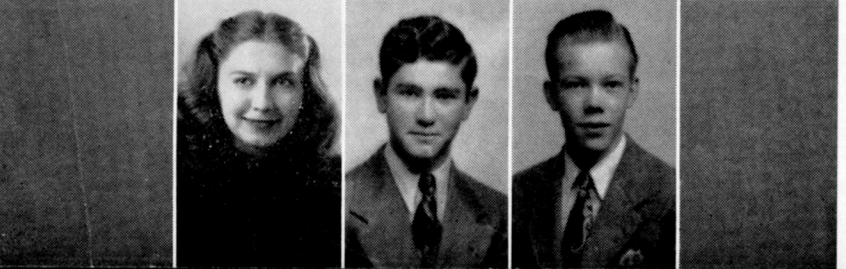
MEYER, BEVERLY, Stenographic: Bumble "B" 1, 2, Collector 3; Scroll, Business Manager 2, 3; Quill and Scroll 3, 4; Band 1; Orchestra 1; Mixed Chorus 1, 2; Girls' Glee Club 1, 2; Madrigal Group 2; "Snafu"; Pep Club 2, 3; B-Y-ettes 1; Hi-Tri 2, President 3; "Night of January 16" . . . **MICKLE, GAIL, Scientific:** Football 1; Track 1 . . . **MILES, JOHN, General:** Football 1, 2; Basketball 1, 2; Bumble "B" 2; Hi-Y 2, 3 . . . **MILLER, GRETCHEN, General** . . . **MILLER, RICHARD, General.**



MILLWARD, JOHN, General . . . **MOORMAN, VERNON, General:** Track 3; Baseball 1, 2, 3; Swimming 2, 3; Hi-Y 3; "Night of January 16" . . . **MORRIS, JOHN, Scientific:** Swimming 1, 2, 3; Mixed Chorus 1, 2, 3; Quartet, Madrigal Group; "June Mad"; (Dropped) . . . **MOSS, GERALDINE, Stenographic** . . . **NEEDHAM, PAUL, Scientific:** Track 2, 3; Bumble "B" 1; National Honor Society.



OLNEY, JUNE, Stenographic: Pep Club 3 . . . **OLSON, JUNE, General:** Hi-Tri 3 . . . **ORR, ROGER, General:** Football 1, 2, 3; Basketball 1; Baseball 1, 2, 3; Journalism 1, 2, 3; "What a Life"; Student Council 1, President 2; Junior Class President . . . **PARRY, ANNA VE, Scientific:** Volleyball 1; Band 1, 2; Orchestra 1, 2 . . . **PATTERSON, LEWIS, Scientific:** Football 1, 2; Basketball 1, 2; Track 1; Baseball 1, 2, 3; Scroll 2, 3; Student Council 1, 2; Hi-Y 2, 3; Senior Class President; Junior Class Vice-President.



PAULSON, MARGARET, Stenographic: Girls' Glee Club 3; Pep Club 1, 2, 3; Hi-Tri 3 . . . **PERVIER, RICHARD, Scientific** . . . **PETERSON, DONALD, Scientific.**

PETERSON, PHYLLIS, Stenographic: Girls Basketball 1, 2, 3; Bumble "B" 2, 3; Pep Club 3; B-Y-Ettes 1; Hi-Tri 3. . . **PHIPPS, BETTY**, Stenographic: Director of "Cloudburst"; "Elopement"; title: Bumble "B" 1, 2, News Editor 3; Quill and Scroll 2, 3; Scroll 3; Theatre Guild 1; "June Mad"; "A Midnight Fantasy"; B-Y-Ettes Treasurer 1; National Honor Society. . . **PHIPPS DORIS**, Scientific: Volleyball 1; Art 1, 2, 3. . . **PIKE, ROBERT**, Arts and Crafts: Hi-Y 3. . . **PIPER, WILLIS**, Arts and Crafts: Track 1; "Night of January 16"; "Snafu"; Hi-Y 2, 3.

QUINN, CHARLOTTE, Stenographic: Scroll 3; Mixed Chorus 2; Girls' Glee Club 3; Pep Club 1, 2, 3; B-Y-Ettes 2; Hi-Tri 2, 3. . . **REED, BERNICE**, Stenographic: Bumble "B" 2, 3; Scroll 2, 3; Quill and Scroll 3. . . **REYNOLDS, MARJORIE**, Arts and Crafts: Mixed Chorus 3. . . **ROSE, NANCY**, Scientific: National Honor Society. . . **ROSE, PATRICIA**, Stenographic: Bumble "B" 2; Scroll 2, 3; Quill and Scroll 2, 3; Pep Club 1, 2, 3.

ROSS, DELORES JEAN, Scientific: Mixed Chorus 1, 2, 3; Girls' Glee Club 1, 2, 3; "What a Life". . . **SCANLIN, ED**, General: "Antic Spring"; "Night of January 16". . . **SCHAFFNER, GERALDINE**, Stenographic. . . **SCHROEDER, JAMES**, Arts and Crafts: Football Manager 1, 2, 3; Basketball 1; Track 1, 2, 3; Student Council 1, 2, 3; Hi-Y, Secretary 3; Vice-President of Senior Class. . . **SELLERS, LEAH**, General.

SHAFER, NORMA, Stenographic: Mixed Chorus 2; Pep Club 3; Hi-Tri Vice-President 3. . . **SHEPARD, SHIRLEY**, General: (Dropped). . . **SINN, HAROLD**, Arts and Crafts: Football 1; Hi-Y 3. . . **SMITH, MILDRED**, Stenographic: Girls' Basketball 2, 3; G.A.A. 2; Hi-Tri 3. . . **SNEDEKER, JANE**, Scientific: Volleyball 1; Bumble "B" 1, 2, Editor-in-Chief 3; Scroll 3; Quill and Scroll 2, 3; Theatre Guild 1; "Midnight Fantasy"; B-Y-Ettes 1; National Honor Society.

SORENSEN, MARGARET, Stenographic. . . **SPARKS, CARYL**, Scientific: Bumble "B" 3; Scroll 2; Girls' Glee Club 1, 2, 3; Hi-Tri 3. . . **STARK, JEAN**, Stenographic: Pep Club 1, 2, 3; Basketball 1, 2, 3; Senior Class Secretary: "Night of January 16". . . **STEMMERMAN, BETTY**, Stenographic. . . **STOTTS, LOIS**, General: Mixed Chorus 1, 2; Girls' Glee Club 1, 2, 3; Pep Club 3; Hi-Tri 3.

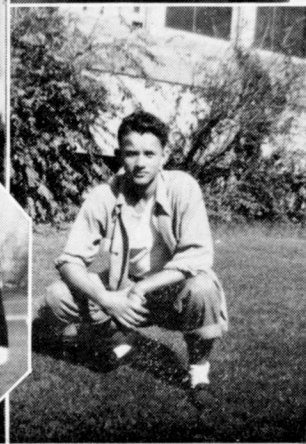
STURTZ, ARTHUR, Scientific: Band 1, 2, 3; Mixed Chorus 3; Small Music Groups 3. . . **STURTZ, JOANNE**, Stenographic: Pep Club 1, 2, 3; Basketball 1, 2, 3; National Honor Society. . . **THOMAS, JOAN**, Stenographic. . . **THOMPSON, LOUISE**, General: Scroll 3; Quill and Scroll 3; Mixed Chorus 2, 3; Girls' Glee Club 2, 3; Pep Club 1, 2, 3; B-Y-Ettes 1; Hi-Tri 2, 3; "Night of January 16".

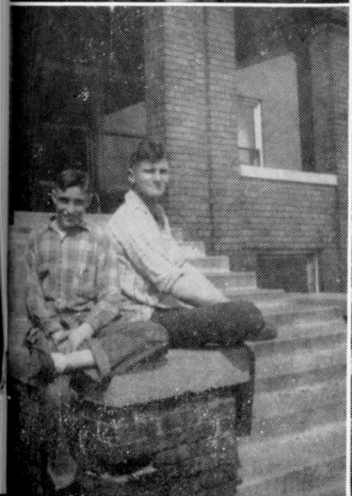
VAN DE WOESTINE, ROBERT, Scientific: Football 1, 2, 3; Basketball, Manager 1; Track 1, 2; Hi-Y 2, 3.

VAN NESS, WAYNE, Scientific: Football 1, 2, 3; Basketball, Manager 1, 2, 3; Swimming 1, 2, 3; Scroll 2, 3; Mixed Chorus 1, 2, 3; Glee Club 2; "What a Life"; Hi-Y 2, Vice-President 3; National Honor Society; "Night of January 16". . . **WAHL, JAMES**, Scientific. . . **WENZEL, JOAN**, Scientific: Volleyball 1; Bumble "B" 1, 2, Feature Editor 3; Scroll 2, Art Editor 3; Quill and Scroll 2; Secretary and Treasurer 3; Theatre Guild 1; "Midnight Fantasy". . . **WESTBERG, CARL**, General. . . **WILLIAMS, HELEN LOUISE**, Stenographic: Mixed Chorus 1; Girls' Glee Club 1.

WILLIAMS, LOLA, General. . . **WILSON, JACK**, Scientific: Track 1; Hi-Y 3. . . **ZANKER, MARCELLA**, Stenographic: Mixed Chorus 1, 2; Girls' Glee Club 1, 2, 3.









JUNIOR OFFICERS

J. Littell	President
J. Johnstone	Vice-President
D. Clarke	Secretary

THE JUNIORS

Hi there! We're the juniors! Don't look so surprised. You couldn't possibly have overlooked us because we play an important role in this school. Well, take our football varsity team. (Ames did!) Who makes up practically three-fourths of the team? The juniors. Who gives you competition for hobo day fights? The juniors. Who do their part in putting on the plays for our school? The juniors. Who will be seniors next year? The juniors. Oh, yes, you can't beat the juniors!

To prove to you that we aren't just "battin' the breeze," let's review the junior class history. Wandering into the auditorium, we see Pete Moss making his star entrance in "Snafu," followed by Jay Honohan. Later in the act, Lee Driscoll ushers Bill Stemmerman on the stage. That's dramatics!

A new club came into existence this year, the "D.D.T." club. The letters, D.D.T. mean "Developing Discussion Talents." Quite a name! Quite a club! We won't go into detail, but the three officers are all juniors: Pete Moss, Dorothy Ruschmeyer, and Dorothy Clarke. Need I say more? Whom do you call upon when you want a singer for our new swing band? Of course! Sonia Scholl or Jim Becker, the new "Buttermilk Sky" king.

Who knows so much about sports that when we greet him, instead of saying "Hello," as a sane person would, he recites the starting lineups for

Army or Navy? That's right, "Legs" Johnstone. Who pops into your bewildered mind when you want a smooth arrangement of "Clair de Lune" or whom do you call upon for a swimming partner? Natch! Rusty, "Esther Williams of Boone High." When you try to think who has a knack of whipping up malts and scooping sundaes that make your tongue hang dry, the name Dot Barrows immediately flashes into your mind. She's Ripley's prize queen.

Feast your eyes on this bit of printed matter. The junior class rates the only pair of twins in senior high. Doris and Delores Laidley. Surprised? The flame of intelligence burns high for the juniors. Who was it that won the Goeppinger Award two years ago? Virginia Jones and Marshall King, whose intelligent faces still stand out in our junior class.

Now our thoughts turn to music. Tra, la, la! There, also, the overpowering juniors shine. Take the sextette. It's composed of six girls, four of whom belong to the junior class: Pat Berglund, Sonia Scholl, Jo Veale, and Dorothy Clarke. Juniors are also generously scattered around in the high school choir, orchestra, and band. And speaking of orchestra, who holds the first chair of violins, envied by many others? Sonia Scholl. If there is anything new cookin', you usually find a junior parked on the front burner. In the Home Ec room we find Dorothy Gill, Mick Thomas, and Betty Weber working hard. Attention, boys!

On Friday afternoons a group wearing red sweaters and white skirts greets us, only to remind us that Pat Berglund is historian of the Pep Club and Lee Driscoll is vice-president.

In sports, when the Central Iowa Conference Teams were chosen, three juniors received recognition. They were Jim Littell, Joe Krenz, and Chuck Denning.

From the manual training room, where we find Bob Leiden doing outstanding work, we dash up to the art room on third floor where we are impressed with the ability of Herb Smith and Jay Mallas.

Wherever you turn or look, you usually find a junior or a large sign saying: "A junior was here!"

A Junior.

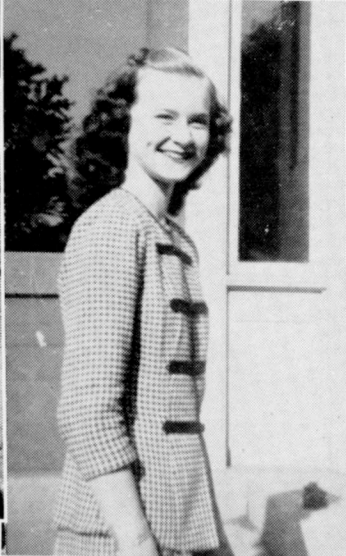


Wiggles
Support
Bonnie

Happy?
Short n' Sweet
Mutt and Jeff

Guys Called Jim
The Thinkers

What a Life!
Posin' Pretty Showin' His Gold
Bringing Home the Bacon



Seams Straight?

Three Wise Fools

The Pause That Refreshes

"Babs"

Ivoryene Smile

Easy on the Eyes

Where's the Senior??

Chivalry at Its Best

The Romanticist and the Realist

Goldwyn Girls??



SOPHOMORE FEATURES

Each year the sophies get the spoon;
They're the babies of Boone High,
But they will turn the tables soon
And make the freshmen sigh.
Although tradition says they're green,
The class of '49 is fine.
By the following verses it can be seen
In every phase of life they shine.

* * * *

Archie Daly tries to please;
A would-be wit is he.
But every time he tells a joke,
The point is hard to see.

* * * *

Shirley Heitkamp comes around
And to us lends her voice.
She sings her songs in such a way
That makes her everyone's choice.

* * * *

A boy that captures all girls' hearts
Is sophomore Everett Long.
It could be 'cause of his good looks
But likely 'cause he's strong.

* * * *

The director said, "What can you do?"
"Anything," said she.
And if you don't know whom, we'll tell.
It's Jackie Cook. Agree?

* * * *

Bebe Fisher is a whiz at books,
And acclaimed as queen of the courts.
Though she's very fond of animals, too,
Her interest is mainly sports.

* * * *

Shirley Core is the gal
Who always gets her guy.
Can it be because
She rolls a wicked eye?

* * * *

A wee shy lass is Marilyn Clarke,
But one who can have her say.
In case you doubt my word, good man,
Did you see the senior high play?

* * * *

This Dugger boy with big brown eyes
Really speaks his mind.
In basketball and the Drive-In Store,
Dick, you'll always find.

* * * *

When in this class of sophomores bright,
Dramatics is the call,
A certain sophomore will stand out;
Her name is Gretchen Hall.

* * * *

Two smart ones won the Goep award
In this super class.
Byerly was the lucky boy;
Preston was the lass.

* * * *

Joanne C's a pretty maid;
On the cello she excels.
In her bright red sweater at the games
She joins the girls in yells.

* * * *

If you ever need a loud debate,
Gayle Manges is your boy.

He'll argue on any small question;
To him it is a joy.

* * * *

Orchids to Irene Rountree,
A very brilliant girl,
Who in the necklace of success
Will be an outstanding pearl.

* * * *

A maid so skilled in dancing
Is little Georgia K.
And some day we hope she will
Star in a great ballet.

* * * *

Joyce Aitchison's no landlubber,
Swimming is her dish.
She does the lengths in no time, flat.
You'd think she was a fish.

* * * *

In sports he's strictly on the ball;
He's carefree as a breeze.
Driving a green convertible,
Is John L., if you please.

* * * *

Harry Fritz is quite the guy,
As amiable as they come.
Hunting is his chief delight,
But at Boyd's he's not so dumb.

* * * *

The maestro of Boone High, they say,
Is cute Joyce McIlvain.
Her heart is in her violin;
She beautifies each strain.

* * * *

Oley Olson is the type
That makes the girls' hearts pound.
With cute pug nose and blond hair, too,
He certainly gets around.

* * * *

Outstanding in the line of sports,
Music and Pep Club, too,
Jo Smith, the pal of everyone,
Has personality plus, 'tis true.

* * * *

A second Harry James is he;
His trumpet makes you sway.
This handsome blond is really "hep";
K. Bloomquist is "boy of the day."

* * * *

Tall, dark, and indifferent,
With friends galore,
For ambitious Bob Powers
There is much in store.

* * * *

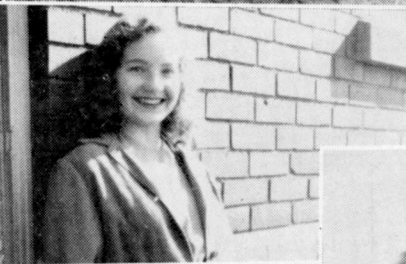
Seldom does a true blond roam
Through our halls of fame.
But here we have one, blond and true,
And Curell is her name.

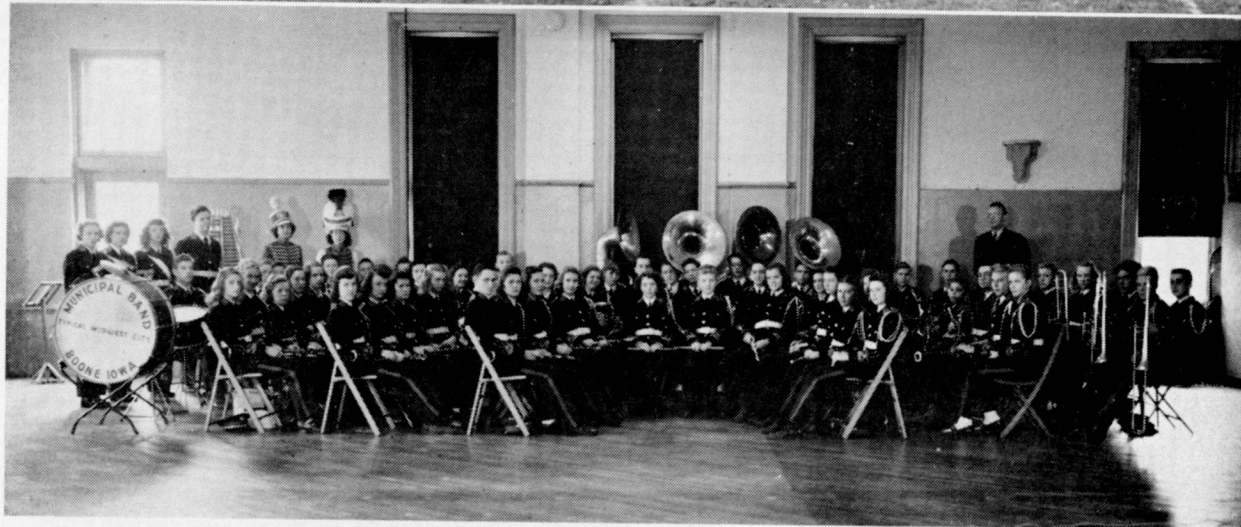
* * * *

Jimmy Fangman is our choice
For working in the show.
Although it is his father's place,
He earns a lot of dough.

* * * *

Ardyce Kading is our gal,
Or shall we say is Grant's?
For this blond—a Junior IV,
Ardy's true heart pants.





INSTRUMENTAL MUSIC

Several band groups, under the direction of Mr. R. N. Cook, contributed to the entertainment and musical development of Boone High School throughout the year.

Appearing with snappy precision and rhythm during the football season was the marching band, with Betty McEntaffer as drum major. Their most outstanding and original between-half stunt was "Moonlight Serenade" which was presented at the Homecoming game. Each member of the band had a tiny light on his hat, and it seemed that one thin, glowing stream flowed onto the darkened field. As various formations were made, appropriate songs were played, such as "Star Dust" while a star was being formed.

Basketball games and pep meetings would not have been complete without the Pep Band. Their vigorous music boosted the spirits of both team and spectators. Besides faithfully fulfilling their duties each week in the Boone High gym, they were guest players at an Iowa State College game during Christmas vacation.

The latter part of the year was devoted to the concert band. Much work was put into preparation for their four concerts, the Christmas concert, two school assemblies, and the "1000 Club" concert. Several difficult numbers were played including "Carribean Fantasy" and "Finale" from the symphony in F. Minor. The band received a "Superior" rating at the State Music Contest in April.

ORCHESTRA

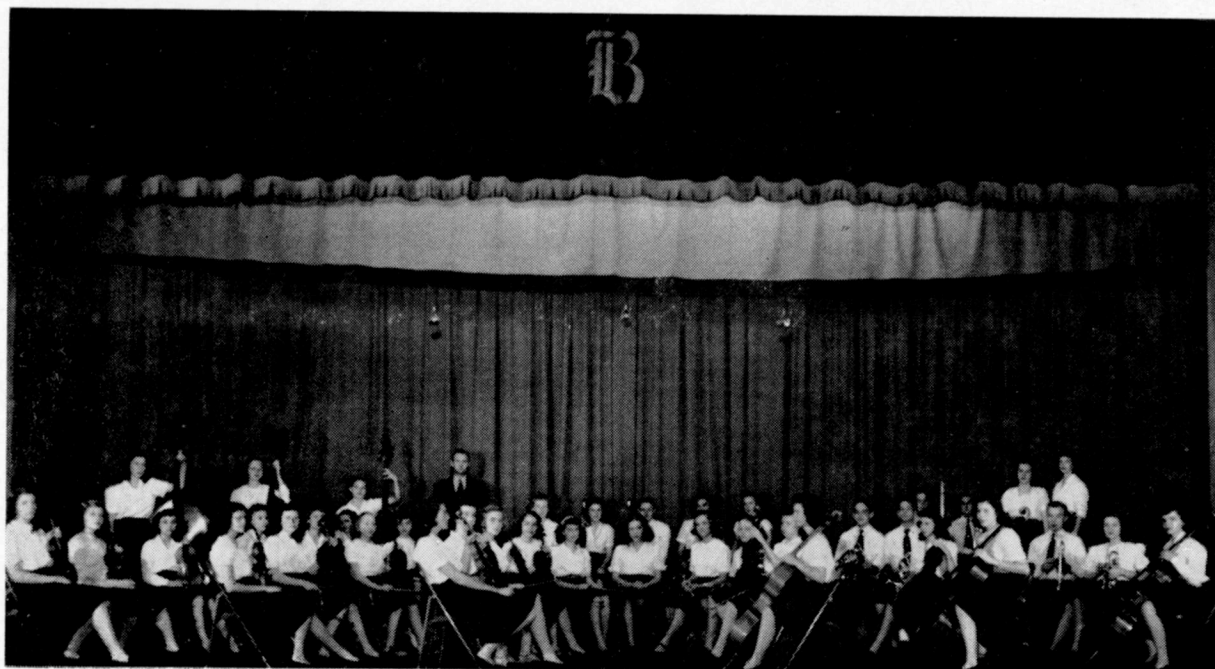
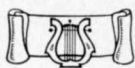
Under the direction of Mr. Konrad Scholl, the Boone High Symphony orchestra made its first appearance in a Christmas concert; then on February 28 they presented their '1000 Club' concert to a large and appreciative audience. Among the many numbers featured were "Rosamunde Overture," the colorful "Tanglewood Pool," "On the Trail," and a series of five dances including Mr. Scholl's own "Tango." Preceding these concerts were two fine school assemblies based on the same program. Another musical treat during the year was Mr. Scholl's own violin recital.

With "Rosamunde Overture" by Schubert, and "Russian Soldier's Dance" as their selections, the

orchestra rated an "Excellent" in the State Music Contest.

Each year the orchestras and choruses of Fort Dodge, Ames, and Boone High Schools unite for a Tri-City Festival. Instead of a joint concert as has been given in the past, this year the vocal and instrumental groups met on different days and the orchestra prepared a longer program for its appearance in Ames and May 13.

Orchestra members attended a Drake Symphony concert at Des Moines; and, with the band, saw the musical film, "I've Always Loved You," through the courtesy of our local theatre manager, Mr. Fangman.





GLEE CLUB—First row, left to right: Ross, Teagarden, Jones, Berglund, McIntyre, Echternach, P. Doran, Lindmark, Clarke, Adams, Sturtz, B. Doran, Miss Hultquist, instructor. Second row: Wirtz, Quinn, Shafer, Hessel, Carlson, Paulson, Veale, Abbenseth, Thompson, Stotts. Third row: Fosgreen, Johnson, Hoyt, M. Doran, Hagaman, Standley, Manny, Carlson, Brainard, Scholl. Fourth row: Ingalls, Zander, McCall, Farley, Moore, Aspengren, Holbrook, Cook, Heitkamp, Erickson, accompanist.

MIXED CHORUS—First row, left to right: Ross, Quinn, Teagarden, Wirtz, Berglund, McIntyre, Echternach, Dickey, P. Doran, J. Lindmark, Clarke, Cook, B. Doran, Heitkamp, Jones, accompanist. Second row: Chamberlin, Fosgreen, Johnson, Hessel, Lind, Hoyt, Buss, Veale, Thompson, Douglass, Miss Hultquist, instructor. Third row: Stark, Burke, Reed, Kaness, Fangman, Duncan, Campbell, Weisgerber, Marshall. Fourth row: Grimes, Erickson, Morris, Lentz, Bloomquist, Settle, K. Lindmark, Linn, Becker, Van Ness, Cooper, McCormick.

VOCAL DEPARTMENT

Under the direction of Miss Josephine Hultquist, the Boone High School chorus and girls' glee club presented two concerts of sacred and secular selections, one at Christmas time and another on Palm Sunday. They also presented a concert to a high school audience in April.

Besides the large choirs, there were various smaller musical groups which also appeared at concerts and local functions.

On April 24, 25, and 26, Boone played host to the all-important 1947 State Music contest. About 4000 Iowa high school musicians were entered. The Boone Girls' Glee Club, which reentered contest work for the first time in several years,

came out with a "first" rating. A "second" was received by the chorus, also entered after a long absence from state contests. The girls' sextette and the boys' quartet each received a "second" rating. Four out of six of Boone's soloists placed. Ruth McIntyre, soprano, second; Beverly Doran, contralto, second; Dick Weisgerber, baritone, first; James Becker, bass, first; and Dorothy Ruchmeyer, pianist, second. Boone High School may well be proud of all of them.

The chorus, and the girls' and boys' glee clubs, were also participants, together with Ames and Fort Dodge, in the annual Tri-City Festival. The vocal concert was held in Fort Dodge on May 6.

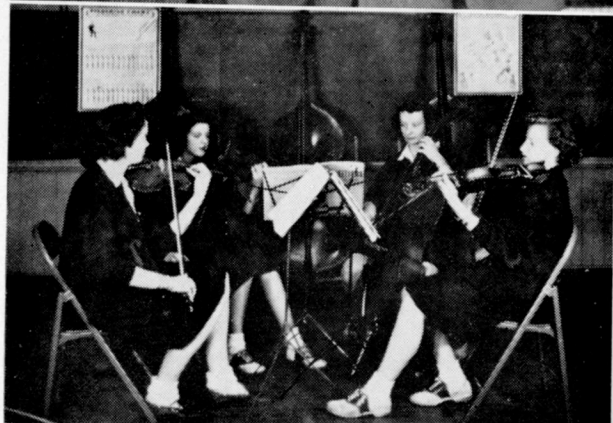
Boys' Quartette

The original members of the boys' quartet were: John Burke, first tenor; John Morris, second tenor; Robert Lentz, baritone; and James Becker, bass. With the loss of John Morris to the army, the personnel was changed to: John Burke, first tenor; Tom Grimes, second tenor; Lee Cooper, baritone; and James Becker, bass. They entered the State Music Contest and received a "second" rating. Also they sang two selections over Station KFGQ. Accompanists were Virginia Jones and James Erickson.



String Quartette

Sonia Scholl, violin; Joyce McIlvain, violin; Lorna Hunter, viola; and Shirley Preston, cello, comprised the string quartet, accompanied by Virginia Jones on the piano. Besides participating in several of the department recitals held at Washington school, they entered the first and second movements of the "Del Marter Quartet in G" in the State Music Contest.



Girls' Sextette

Instructed by Miss Josephine Hultquist and accompanied by Virginia Jones, the girls' sextette appeared at many local functions. They sang for the Woman's Club programs, church groups, and participated in concerts. When the music department presented an hour's program over the local radio station, KFGQ, the sextette participated with two vocal numbers. The girls are: soprano, Ruth McIntyre and Patty Berglund; second soprano, Joanne Veale and Lois Manny; alto, Sonia Scholl and Dorothy Clarke.



String Ensemble

A group of eight students—Sonia Scholl, Joyce McIlvain, Elaine Hohanshelt, Madelyn Nelson, Shirley Preston, Ann Herman, Bonnie Hoefle, and Ann Chamberlin—formed the String Ensemble. They played an active part in furnishing the musical entertainment for many local organizations. Also, on February 28, they joined with other members of the music department in the broadcast over KFGQ. Some of the selections featured throughout the year were: "Old Black Joe," "Melody in F," "Freckles," "Minuet from the G Minor Symphony," "Begin the Beguine," and "When Day Is Done."



Violin Quartette

"Caprice Viennoise," composed by Kreisler to be played by four violins, gave rise to the organization of a violin quartet, consisting of Sonia Scholl, Ann Chamberlin, Joyce McIlvain, and Bonnie Hoefle. They gave their first performance over KFGQ; then, again in the evening, they appeared at the "1000 Club" concert as a featured "small group."





"SNAFU"

DRAMATICS

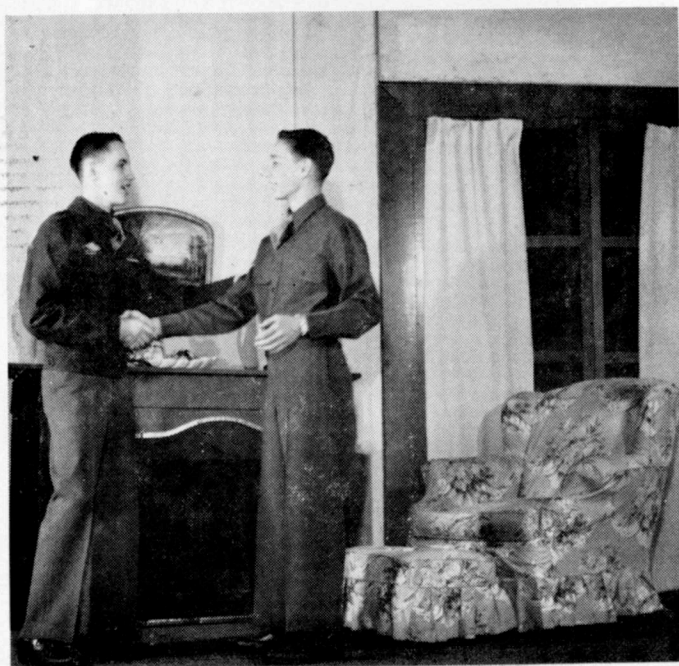
The work in dramatics and public speaking was under the direction of Miss Marjorie James, head of the speech department, and Mrs. Isabel Taylor, who assisted with the forensic work.

On November 15, 1946, the following cast presented "Snafu," a three-act comedy:

Ronald Stevens	Charles Moss
Ben Stevens	Douglas Fitzgerald
Madge Stevens	Jeannine Lindmark
Josephina	Leaore Driscoll
Pfc. Danny Baker	Jay Honohan
Kate	Marilyn Otis
Laura Jesseps	Jo Ann Forbes
Aunt Emily	Jo Ellen Lane
Mr. Taylor	James Linn
Senator Phil Ford	William Stemmerman
Mrs. Garreth	Mary Lou Bice
Martha	Marilyn Clarke
Colonel West	Kenneth Lindmark
Legionnaires	Wilmar Littrell, Fred Hartman, Jack Blanchan

Stemmerman

Moss



In keeping with the Christmas season, a one-act play, "The Cornhusk Doll," was given by the second-year speech class, for a senior high assembly.

Carlotta	Delores Buss
Katie	Patricia Doran
Walden	Alvin Ericson
Dan Gates	Edward Statton
Jake Roberts	James Littell

The dramatic season ended with the presentation of the senior class play. "The Night of January 16th," a three-act comedy-drama.

Karen Andre	Margaret Linderblood
Flint	Willis Curell
Stevens	Wayne Van Ness
Mrs. John Hutchins	Beverly Handschin
Judge Heath	Edward Scanlin
Homer Van Fleet	Dominic Belmont
Elmer Sweeney	Wilmar Littrell
Nancy Lee Faulkner	Patricia Doran
John Graham Whitfield	Russell Anderson
Jane Chandler	Louise Thompson
Sigurd Jungquist	Ralph Jones
Dr. Kirkland	Vernon Moorman
Magda Svenson	Grayce Broadwell
Larry Regan	Robert McCormick
Roberta Van Rensselaer	Sharron Jones
Policeman	Alvin Ericson
Clerk of Court	Willis Piper
Stenographer	Doris Berglund
Prison Matron	Beverly Meyer
Bailiff	Robert Lee
Secretary to Flint	Jean Stark
Secretary to Stevens	Beverly Baird

Public Speaking

Boone High School, a member of the Iowa State High School Speech Association, had nine entries in the Preliminary Speech Contest held at Boone. These entrants and their ratings were:

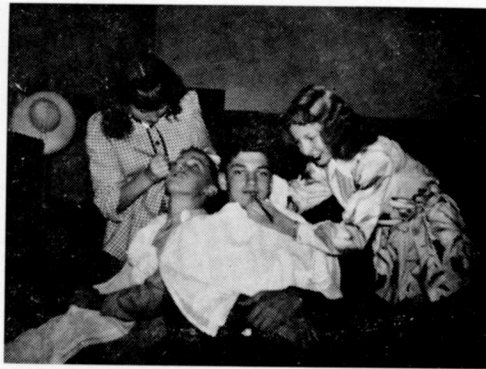
Mary Lou Bice, Interpretive Reading—One.
 Jo Ann Forbes, Interpretive Reading—One.
 Jan Honohan, Interpretive Reading—Two.
 Jeannine Lindmark, Dramatic—One.
 Jo Ellen Lane, Humorous—One.
 Lee Cooper, Oratorical—One.
 Deloris McCall, Original Oratory—One.
 Charles Moss, Radio Speaking—One.
 Douglas Fitzgerald, Radio Speaking—One.

The second of the series of contests was the pre-district, also held at Boone, where the following students received a "One": Charles Moss, Deloris McCall, Lee Cooper, Jo Ann Forbes, and William Stemmerman.

"Antic Spring," a one-act play, received a "One" rating at the pre-district also. This same play was presented in April at the Drake University Play Festival where it received an "Excellent" rating.

The Cast

Blossom	Mary Jo Olson
Ginger	Jo Ann Forbes
Gwendolyn	Martha Abbenseth
Sam	Joseph Krenz
Robert	Edward Scanlin
Elbert	Kenneth Lindmark

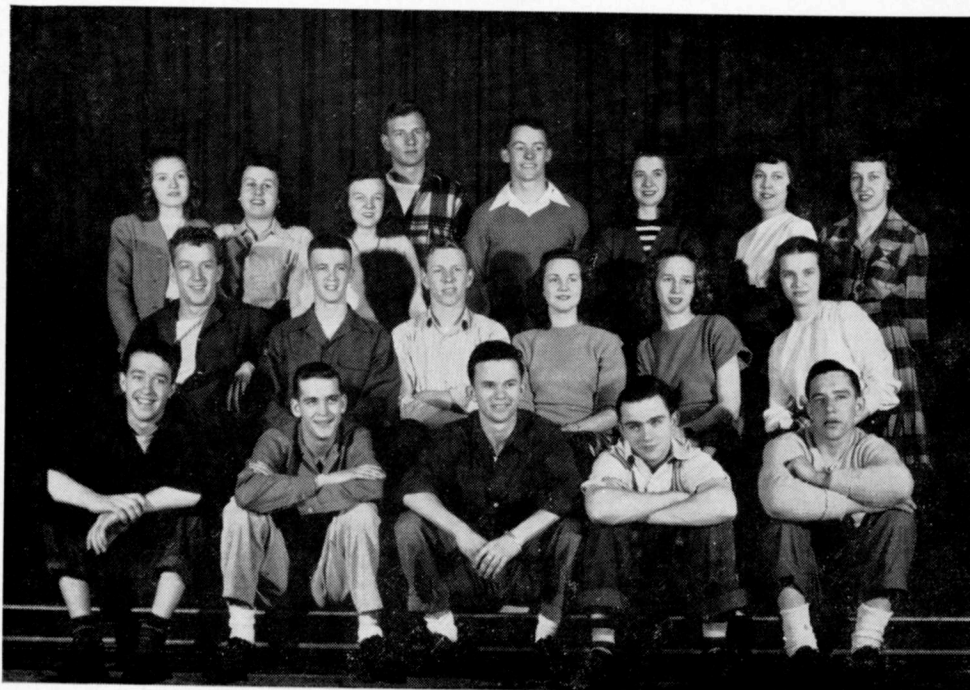


Make-Up

All of the individual entries in the District Contest held at Akron, Iowa, received "One" ratings and went on to the State Contest at Mt. Pleasant, where they were rated as follows:

Deloris McCall—Two.
 Jo Ann Forbes—Two.
 Charles Moss—Three.
 Lee Cooper—Two.
 William Stemmerman—Two.

Boone had one representative, Jo Ann Forbes, at the Iowa Forensic League contest held at Iowa City. Jo Ann received "Superior" ratings in Interpretive Reading with her prepared selection, "The Congo," and her extemporaneous reading from "John Brown's Body" by Benet.



Senior Play Cast



EDITORIAL STAFF—Left to right, seated: Snedeker, Lindmark, Berglund, Rogers. First row: Wenzel, Phipps, Rose, Baird, Quinn, Bice, Blanchard, Mrs. Stevens, adviser, Clarke, Hoefle, Forbes. Back row: Mrs. Gluenkin, adviser, Anderson, Van Ness, Cooper.

SCROLL STAFF

EDITOR-IN-CHIEF	Lee Cooper
ASSISTANT EDITOR	Mary Lou Bice
ART EDITOR	Joan Wenzel
ADVERTISING MANAGER	Beverly Meyer
EDITORIAL STAFF	Joanne Forbes, Lewis Patterson, Patty Anne Berglund, Betty Phipps, Jane Snedeker, Donna Blanchard, Bonnie Hoefle, Dorothy Clarke, Donna Rogers, Jeannine Lindmark, Willis Curell.
ADVERTISING STAFF	Patty Brown, Martha Abbenseth, Barbara Brainard, Marie Swank, Audrey Hughes, Berniece Reed, Dorothy Ruschmeyer, Louise Thompson, Beverly Handschin, Lila L. Buechler.
PHOTOGRAPHERS	Wayne Van Ness, Patty Rose, Russell Anderson, Beverly Baird, Charlotte Quinn, Charles Moss.
ADVISERS	Mrs. Zoe Stevens, Mrs. Margaret Gluenkin, Miss Naomi Hicks

ADVERTISING STAFF—Front row, left to right: Hughes, Brainard, Swank, Ruschmeyer, Handschin, Meyers. Back row: Reed, Miss Hicks, adviser, Buechler, Brown, Thompson, Abbenseth.





BUMBLE "B" STAFF

EDITOR-IN-CHIEF	Jane Snedeker
NEWS EDITOR	Betty Phipps
FEATURE EDITOR	Joan Wenzel
EXCHANGE	Jeannine Lindmark
NEWS WRITERS	Donna Blanchard, Gloria Hessel, Margaret Carlson, Viola Morris, Bonnie Hoefle, Virginia Jones, Marcella Eckberg.
FEATURE WRITERS	Dorothy Clarke, Marie Swank, Joan Cunningham, Jim Erickson, Pat Berglund, Mary Lou Bice, Barbara Barnard, Shirley Heitkamp, Jo Ellen Lane, Betty Weber, Irene Rountree, Marilyn Doran, Joyce Barquist, Ardyce Kading.
SPORTS WRITERS	Willis Curell, Marshall King, Joe Krenz, Wayne Van Ness, Phyllis Peterson, Sharon Bowes, Joanne Smith, Alice Fisher.
ADVERTISING MANAGER	Beverly Baird
ADVERTISING STAFF	Caryl Sparks, Camilla Morrissey, Dorothy Ruschmeyer, Pat Brown, Lois Tingwald, Martha Abbenseth, Marcia Moore, Alta Ruth Thomas, Beverly Canady, Shirley Core, Patricia Shafer, Virginia Parker, David Diehl.
COLLECTIONS	Beverly Meyer
ADVISERS	Miss Jane Ealy, Mrs. Vera Martin

