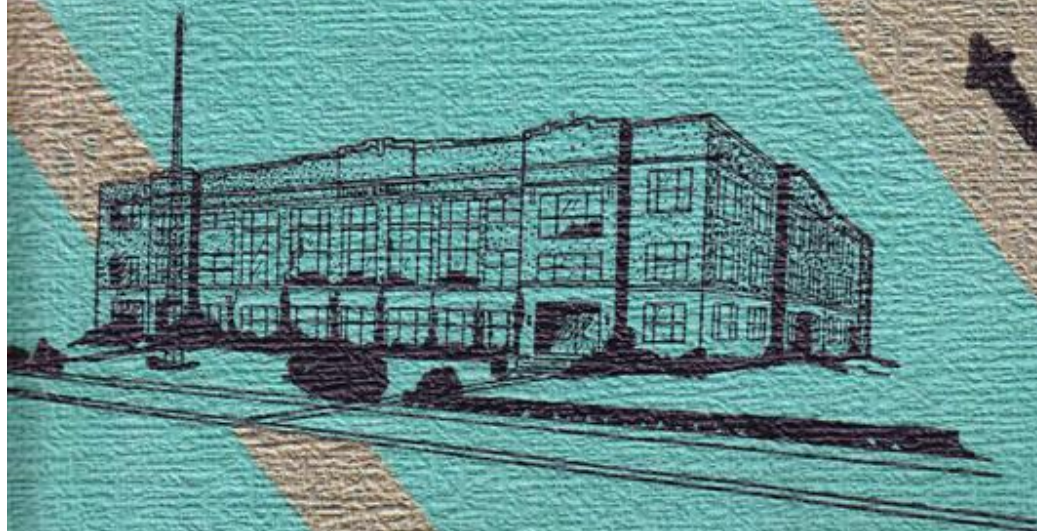


The

# SCROLLMASTER



1940



# F O R E W O R D



## "EDUCATION IS OUR BUSINESS"

**T**HE year 1940, which this Scrolllette commemorates, has been a momentous one. The time is *one of crisis*. More gravely than ever before, our one ideal, democracy, is being challenged. And the essence, the lifeblood, of democracy is education.

Our theme, then, though it may seem rather serious, is particularly timely. Under the collective name of "Boone High School, Incorporated," we are engaging in a business, a serious business, the business upon which all other business and democracy depend—education.

It is our purpose in this Scrolllette to liken our school, as far as possible, to a model business establishment, carefully organized and efficiently administered, and thence to show this, our business, in its various phases:

The OFFICERS of this organization are assisted in their executive duties by the FOREMEN pictured above: John Berg, junior college president; Jack Cummings, sophomore class president; Tom Canakes, junior class president; and Waldo Hageleen, senior class president.

Secondly, we have the ADVERTISING STAFF, essential to the success of any business.

In our classrooms, which correspond to the WORKSHOPS, we strive for the finished product.

MUSIC has not been neglected, as it develops our aesthetic tastes.

To make our workers physically fit, we have instituted a broad program of SPORTS.

In order to encourage more intensive development of HOBBIES, this business has provided an activity program for the workers.

As in any business, we must train APPRENTICES, (the Junior High) to take over the work in later years.

We also provide for RECREATION, in order to develop well-rounded workers.

Then there is the REWARD or wage, in the form of graduation, which is the worker's objective.

In order to improve our products, we maintain the staff of RESEARCH WORKERS, (the Junior College).

And lastly, we picture some of the alumni, who are in business for themselves.



# A D M I N I S T R A T I O N



Students' problems are quickly settled when taken to Miss Harvey, girls' adviser, or Mr. Fisher, boys' adviser and vice-principal.

\*\*\*



Mr. Evans is our principal, and it is his duty to see that our institution runs smoothly and with precision. He is pictured with his efficient clerk, Miss Battey, whose tasks are as many as they are varied.

\*\*\*



Mr. Van Ness, our superintendent, has been particularly busy this year as the result of the construction of the three beautiful new grade school buildings. He is shown here giving dictation to his secretary, Miss Benson.

\*\*\*

The Executive Board of the Student Council aids in governing the student body. It includes: Eugene Standley, president; Sylvia Robertson, secretary; Ray Eytcheson, vice-president; and Wilma Berglund, Dick Jordan, Mildred Boak, Imogene Carpenter, Maurice Good, and Mr. Evans, faculty member.

## SCHOOL BOARD

\*\*\*

The Board of Directors is a vital part of our administration. The members are:

H. L. Wallace, president	J. R. Erickson
L. R. Johnson, secretary	A. J. Eddy
Fay Boak	H. L. Fisher
R. M. Wilson, treasurer	





# A D V E R T I S I N G

The Bumble "B" issued bi-monthly has a capable and efficient editorial and advertising staff including Mary Elizabeth Lees and Virginia Erickson, editors; Mary Ellen Holmes, business manager; and Miss Dagmar Hansen, Miss Wernli, and Mr. Longnecker, advisers.



Miss Shaler, Mrs. Stevens, Miss Podendorf, and Mr. Watson, Scrolllette advisers, supervise the work of putting out a book pleasing to the student body.



This group of students, with Everett Casey as editor and Miriam Halverson as business manager, had the task of publishing this year book.

Bi-annually students are admitted to the Quill and Scroll, International Honor Society for High School Journalists, as a result of excellent work on one of the school publications. They must also be in the upper one-third of their class and be approved by the National Secretary.

Officers of the society are Virginia Erickson, president; Janet Hill, vice-president; Mary Elizabeth Lees, secretary; Dagmar Hansen, sponsor.







Twice a week the physics students have laboratory hours. Bob Barnard, Rex Fuller, and Ruthanne Herrald are busy applying their "book learning."

\* \* \*

Here we see Mr. Watson directing the work of some future commercial artists (they hope).



# WORKSHOPS

In our workshops or classrooms the students are busy piling up credits which will entitle them to a diploma. By careful planning and selection of electives a pupil may qualify for unconditional college entrance in either of the vocational courses.

Six courses are offered which are divided into two groups:

- I. College Preparatory Courses
  - A. Language Course
  - B. Social Science Course
  - C. Scientific Course
- II. Vocational Course
  - A. Commercial Course
  - B. Arts and Crafts Course
  - C. Agriculture Course

In the library you will find students doing everything from sleeping to actual studying. Here you see a good example of what should be done. Incidentally, Mrs. Stevens, the librarian and Scrolllette adviser, is in the background.

In this room, under the supervision of Mr. Hartley, these students learn to be efficient bookkeepers.





# WORKSHOPS

In order to give the girls practical training for later life, we maintain a modern and convenient home economics room where they learn about cooking, meal planning, and serving. Miss Carmody, their instructor, is shown in the back of the room.

\*\*\*

Another vocational course offered is industrial arts which includes woodwork, metal work, work in plastics and leather. Mr. Robinson is the instructor.

\*\*\*

In the first year of mechanical drawing, Mr. Fields teaches the fundamentals of drawing, the use of instruments, size description, shape description, and visualization. The advanced pupils do machine drawing and architectural drawing.

\*\*\*

Here you see a portion of the sewing room where the girls are making great progress with the eight new electric sewing machines.

\*\*\*

A capable staff of student librarians assist Mrs. Stevens. Ruth Patterson and Naomi Smith are shown performing one of the many necessary tasks.

\*\*\*

Mr. Bechtel's chemistry students have, as a rule, two laboratory periods a week, except during the spring when they do qualitative analysis or other individual research work. Bob Fields, Virginia Erickson, and Tom Tesdahl are working on an experiment.





# MUSIC



Although Winona Starner plays more than one instrument, it is with her accordion that she entertains us most often at assemblies.



Our popular girls' trio, Constance Arnold, Winona Starner, and Marilyn Arnold, sing for us at pep meetings and parties.



Ernie Marshall, our assistant drum major, won second place in the National American Legion contest held in Chicago.



Snapped at the State Teachers' Association in Des Moines, where the band played, are band officers: Eugene Standley, Robert Fields, Virginia Moss, Phyllis Finley, Donald DeFrance, and Allan Redeker.

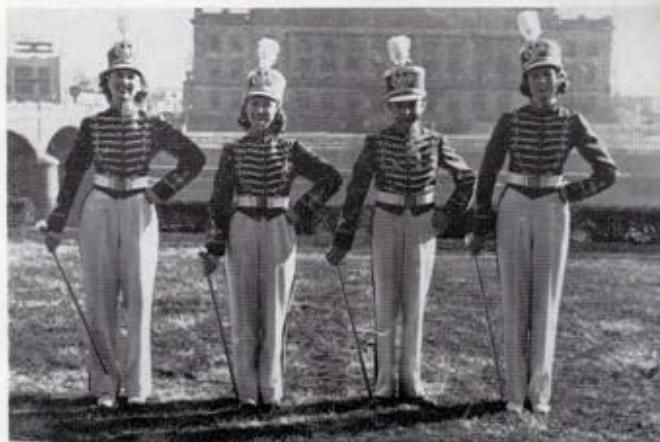


The combined glee clubs, composed of sixty voices, are ably directed by Mr. Hakes. At the preliminary state music contest at Webster City the following students received a "one" rating: Eugene Standley in the tenor solo division; Marilyn Arnold, Naomi North, and Constance Arnold, trio; and Marilyn Arnold in the soprano solo division.



# MUSIC

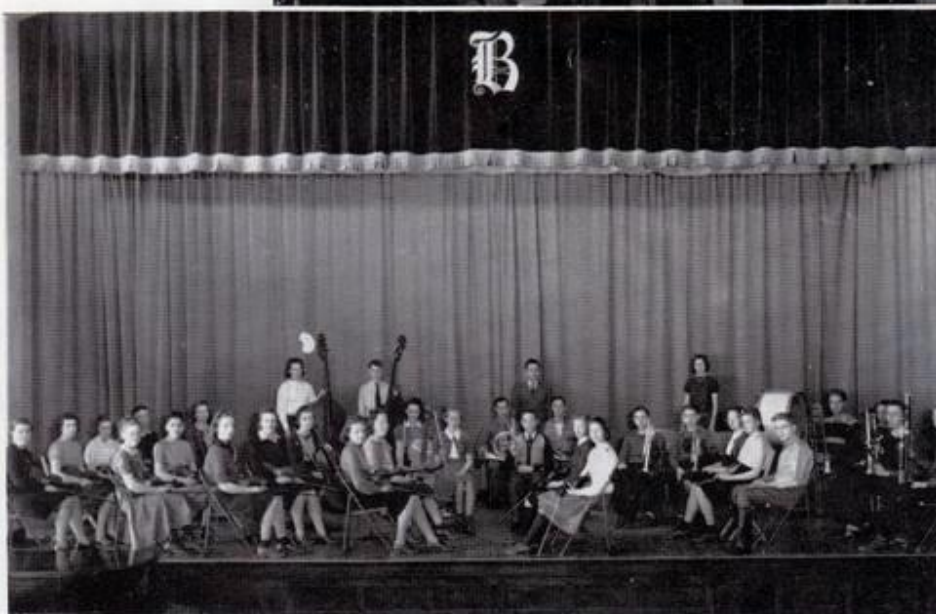
Our twirlers, Ruth Anne Herrald, Ethel Likely, Ernie Marshall, and Annabelle Hodgson, have received much favorable comment from other schools.



Jay Flockhart, Willis McIntyre, Allan Redeker, William Sandbloom, and Leonard Cameron have organized a swing band that can really "swing it".



The orchestra plays at music festivals, plays, operettas and other school functions. It meets first period for practice. Mr. Fields directs it, and also the band.



The marching band performs at football games during halves. This year it is attired in new uniforms, made possible by the activity fund and the efforts of the "band mothers."





# S P O R T S



Miss Jones, girls' physical education instructor, illustrates the proper way to use a bow and arrow.



Pictured at the left are Boone High's peppy cheer leaders: Art Carver, Virginia Erickson, Betty Lee Winfield and George Brown.

• • •

The girls, as well as the boys, take advantage of our fine indoor pool under the watchful eyes of competent life-guards.

• • •

Mr. Hill and Mr. O'Connor, our new football and basketball coaches, have made a place for themselves in the hearts of the students.

• • •

The whole school turns out to bid our football team "bon voyage" and the best of luck, with a few cheers and yells, on their departure for Oskaloosa, their first out-of-town game.



The school climaxed homecoming with the selection of its queen. After the football squad nominated five popular girls, senior high chose Betty Munson as 1939 Homecoming Queen. The girls nominated were Kathleen Johnson, Betty Larsen, Dorothy Erickson, Betty Munson, and Joan Wilson.





# S P O R T S

A crowd of students and shoppers are shown watching the Homecoming Parade.

\*\*\*

For the first time, the schools in the conference organized sophomore teams. Here is Boone's team, coached by Mr. O'Connor.

\*\*\*

Our basketball team played many games, the most successful being the one in which we defeated Ames High, the runnerup in the State basketball tournament. This game was played on our own floor.

\*\*\*

The football team, which showed "scrapping spirit" in the face of defeat, played several games besides its regular conference schedule.

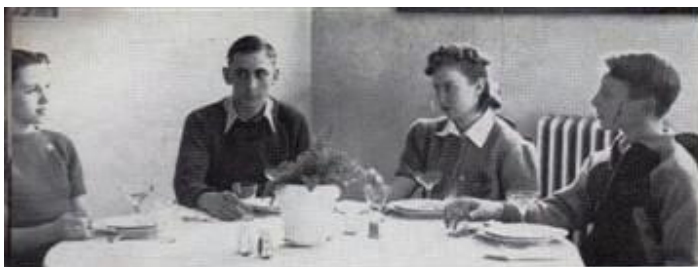
\*\*\*

Golf has come to be one of the most important sports at Boone High. Last year up to the time of the state tournament, in which we finished fourth, we had lost only one meet. The team was composed of Hugh Powers, Edgar Updegraff, and Robert Allender with Charlie Updegraff and Robert Kelly as alternates. Edgar Updegraff was the State High School champion and runner-up in the State Amateur meet.

Dick Jordan, Charlie Updegraff, Kenneth Anderson, Bill Doran, Dick Eckberg, and Fritz Taylor are members of this year's team. Although we had played in only two meets when the Scrolllette went to press, we had a full schedule ahead of us.







The "How-do-you-do-it" club was organized so that the students would learn proper etiquette and the refinements of well-educated people. Here are Vonis Anderson, Kenneth Anderson, Phyllis Finley, and Loren Downey demonstrating correct table manners.



## H O B B I E S

Two years ago through the efforts of Mr. Evans and the student council, it was voted that sixth period be used as an activity hour. Before this, time had been taken from the class periods for activities. The new plan has proved beneficial in that neither activity nor classwork is interrupted.

The students of Boone High have some thirty-five activities from which to choose a worthwhile hobby. In addition to those pictured on this page, there are the Agriculture Club, which has been studying the principles of judging live stock and grain; the Radio Club; the Home Ec Club, which has conducted discussions on etiquette, interior decorating, embroidery and knitting; the Commercial Club; the Drivers' License Club; the Girls' and Boys' Gym Clubs; the Girls' and Boys' Glee Clubs; the Boys' Science Club; the Theatre Guild, and others.

The "Building Committee," which was introduced by the student council at the beginning of the second semester, might also be listed as one of the worthwhile activities in our high school. It is the duty of this committee to take charge of locker keys and bicycles and to keep order in the halls and visiting rooms.

There is no better training for citizenship and worthwhile use of leisure time than that gained by participating in some activity or hobby.



The Art Club, under the capable direction of Mr. Watson, has taken up designing, commercial art and work in clay. The newest project, however, is the murals which adorn the hall on the third floor. A portion of the "sport" section is pictured.



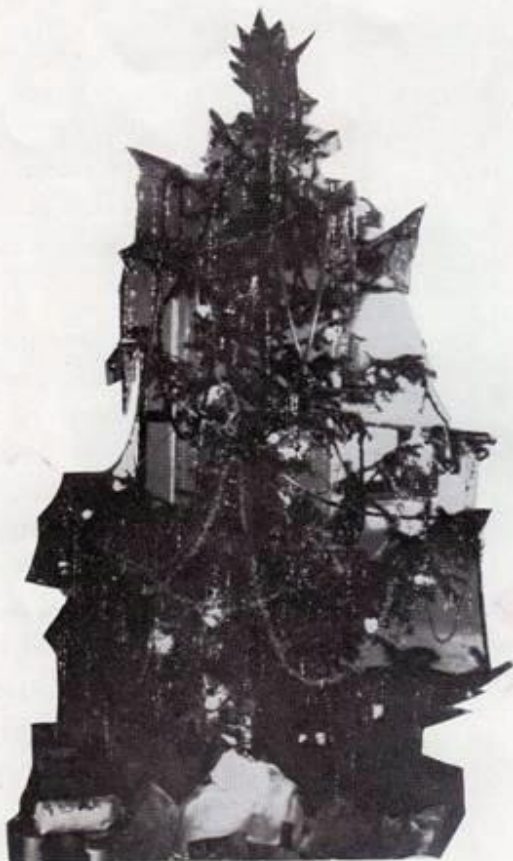
The debate team, composed of Robert Kelly, Harlan Herrick, Dick Eckberg, and Bill Doran, has been debating the topic of government ownership of railroads.



Among the many activities at Boone High is the Stamp Club under the sponsorship of Miss Handy. These philatelists meet sixth period every Monday.



Each Yuletide the Social Science Club places a tree in the hall and supervises the gathering of food and clothing to be given to the Salvation Army for distribution. Miss Stena Hansen directs the various activities of this busy club.



Every day during sixth period Miss Lamb coaches a group of students in various speech activities. Besides broadcasting over WOI they have given programs for various Boone organizations.

♦ ♦ ♦

Here are a few members of the Camera Club developing pictures in the dark room. Under the supervision of Mr. Cunningham and Mr. Bechtel the students have learned the fundamentals of developing, printing, and enlarging.

# H O B B I E S



A few members of the Chess and Checker Club try to solve a knotty problem. Mr. Piper is club sponsor.







Dr. Paulena Nickell, Professor and Head of Home Management of Iowa State College, conducts a guidance group in "Homemaking and Related Careers" during the Boone Vocational Conference.

# REWARDS

Receiving the highest honor awarded to high school students, twenty-eight seniors were elected into the National Honor Society and permitted to wear the flaming torch and keystone pin. Members are chosen on the basis of scholarship, leadership, character, and service.

The officers for this year are: Frank McGaffey, president, and Mildred Book, secretary. Other members of the society are: Robert Allender, Betty Anderson, Shirley Betzenderfer, Imogene Carpenter, Everett Casey, Arthur Clarke, Virginia Erickson, Robert Fields, Betty Jean Gutterridge, Harlan Herrick, Janet Hill, Bill Kading, Robert Kelly, Leona Krug, Mary Elizabeth Lees, Dovie Lee, Carl Leiden, Ashley Phipps, Myron Piper, Sylvia Robertson, Catherine Schwen, Naomi Smith, Eugene Standley, Ila Statton, Arlene Willis, and Joan Wilson.

\* \* \*

With an all girl cast, the Theatre Guild presented a mystery drama, "Yorkshire Pudding," directed by Miss Ringland. The cast, from left to right, was as follows: Pat—Bernice Parrish; Phil—Donna Pulver; Mrs. Dawson—Mary Beghtol; Pamela Dark—Doris Wiernsberger; Una—Corrine Scott; Maud—Mary Jane Taylor; Janet—Betty Lee Winfield; Dora—Thelma Richards; and Lady Spate—Mildred Stump.



# APPRENTICES

A scene during the dental survey. Mrs. Carlson, school nurse, is seated at the desk taking down the data. Dr. Allender is inspecting the teeth of Ruth Baker, while Wilma Berglund, Peggy Page, Jane Nichols, and Dorothy Wright look on.



The junior high basketball team, coached by Mr. Lamb, met with only one defeat this year.

\* \* \*

From the looks of the boys in the pool, one would surmise that they are having plenty of "wet fun."

\* \* \*

Mr. Bain coaches the junior high and junior college basketball team.

\* \* \*

A corner of junior high study hall is shown. The speck on the platform is Mrs. Belden, who keeps a watchful eye on her charges. At the front-table by the shelves are the student librarians.



In planning for the future of our football teams, students of the Junior High School are taught the fundamentals of the game and are organized in a team. They have a schedule in which they meet other schools during the season. This last year the young students enjoyed a most successful year. Meet our first undefeated junior high football team.







Hi Y's and B. Y. Ettes trip the light fantastic at the Boys' "Y" Camp.



Stanley Redeker and Robert Anderson are "off" on their bicycles.

\* \* \*

Wanda Piper, Mary Jane Taylor and Saralyn Wyler waded in the creek at the Ledges State Park.



Our boys' adviser, Mr. Fisher, takes on an adviser of his own.

Faye Martin poses on the cannon, just so you won't forget the old city park.

The "call of the wild" lures Calista Olander, Jeanne Johnstone, Alyce Nicholson, and Doris Wiernsberger to the Ledges State Park, where they rashly brave a rash.



On the porch of the spacious Y. W. C. A. building you see Imogene Carpenter and Janet Hill. In the center is Miss Katherine Lindbloom, general secretary, who, aided by a leadership committee, directs girl reserve clubs for students of all ages.





# R E C R E A T I O N



Our students have appropriated the City Park as a playground.



Mildred Boak and Juanita Brewer get a breath of air between classes.

Naomi Smith, Virginia Heitkamp, Betty Wright, Darlene Heitkamp, Margaret Benson, and Shirley Betzenderfer are off on a hike.

\*\*\*

Zoe Wilson, Gretchen Schroeder, and Betty Halverson are seen here trying to acquire a tan at the Boone Municipal Pool.

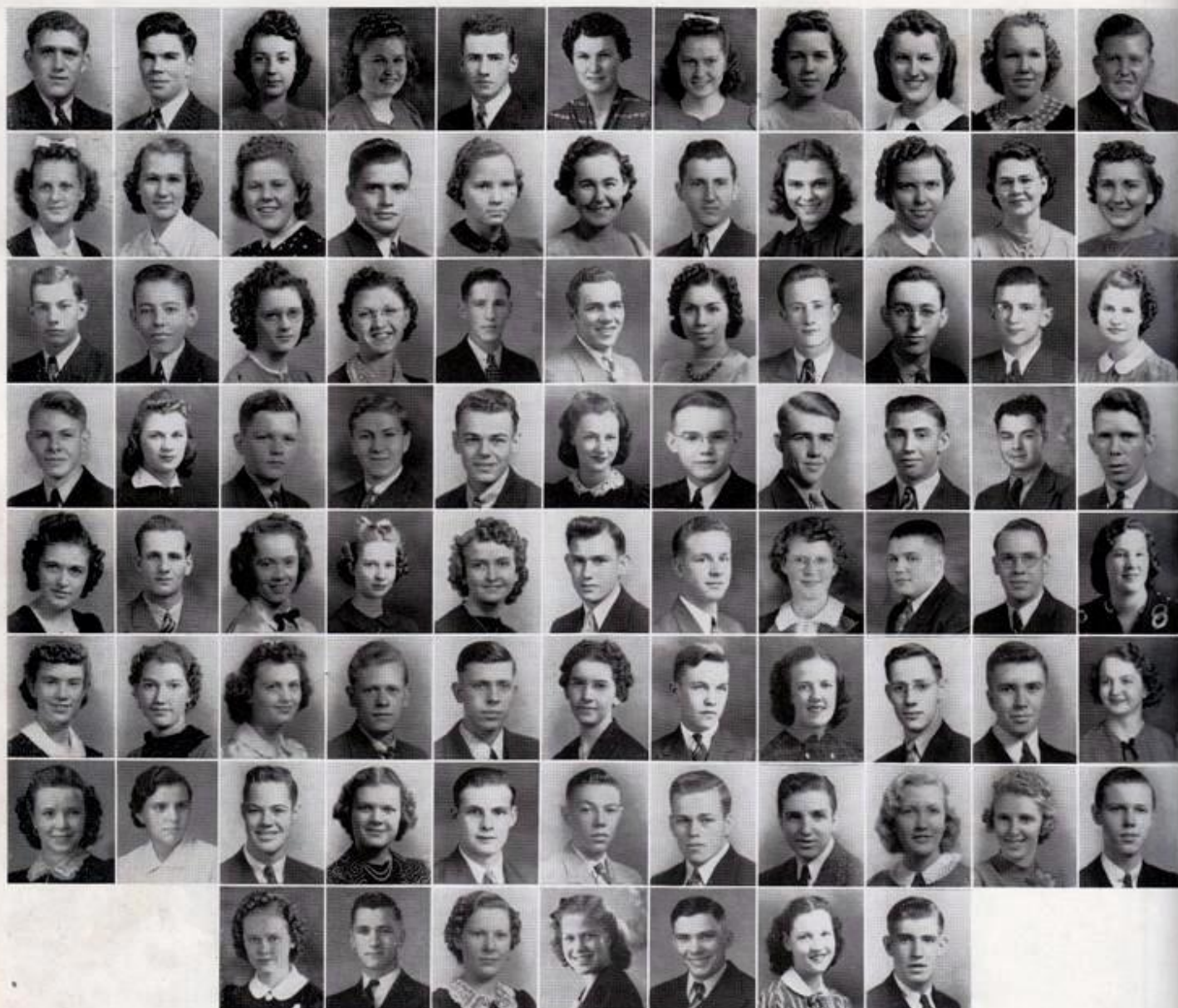


The teachers are as crazy as the students. Here you see the teachers at a Hardtimes Party. Miss Weber and Mr. Fields won prizes for the most appropriate costumes.

Ila Mae Johnson and Kathleen Johnson pose in the park.







**ADREON, ROBERT**  
Commercial

Football 1, 2, 3; Track 2.

**ALLENDER, ROBERT**  
Scientific

Football 1, 2, Co-Captain 3;  
Golf 1, 2, 3; Swimming 2; Chess  
and Checkers Club 3.

**ALSIN, NORMA JEAN**  
Social Science

Theatre Guild 1, 2; Bumble "B"  
2; Home Ec Club 2.

**ANDERSON, BETTY**  
Commercial

Student Council 1, 2; Mixed  
Chorus 2, 3; Glee Club 2, 3;  
Theatre Guild 2.

**ANDERSON, DEAN**  
Arts & Crafts

Football 1; Track 1, 2, 3; Intra-  
mural Basketball 2, 3; Agricul-  
ture Club 3; Social Science Club  
3; Gym Club 3.

**ANDERSON, EMILY**  
Commercial

Home Ec Club 3; Commercial  
Club 2.



**ANDERSON, MARY**  
Commercial

Gym Club 2, 3; Glee Club 3;  
Mixed Chorus 3; Pep Club 2.

**ANDERSON, VONIS**  
Social Science

Glee Club 1, 2, 3; Mixed Chorus  
1, 2, 3; How Do You Do It  
Club 3; "Campus Daze" 1.

**ARNOLD, CONSTANCE**  
Commercial

Glee Club 2, 3; Mixed Chorus  
2, President 3; Scrollette 3;  
Student Council 2; "Campus  
Daze"; Trio 3.

**ASPENGREEN, DOROTHY**  
Commercial

Glee Club 2, 3; How Do You  
Do It Club 3; Home Ec Club  
2; Commercial Club 3.

**BARRETT, HENRY**  
Commercial

Student Council 1; Football 1,  
2; Intra-mural Basketball 2;  
Swim Club 3; Agriculture Club  
3.

**BECKETT, ILENE**  
Commercial

Mixed Chorus 1; Glee Club 1,  
2; Pep Club 2; Gym Club 2, 3.

**BECKWITH, EVALINE**  
Commercial

Mixed Chorus 1; Glee Club 3;  
Gym Club 3; Art Club 3; Or-  
chestra 3.

**BENSON, MARGARET**  
Commercial

Glee Club 1, 3; Pep Club 1;  
Student Council 1; Gym Club  
2; Bumble "B" 2; Commercial  
Club 3; How Do You Do It  
Club 3; "Campus Daze."

**BERG, KENNETH**  
Social Science

Football 1, 2, 3; Basketball 1,  
2, 3; Glee Club 1; Mixed Chorus  
1, Track 1, 2, 3.

**BERGLING, EILA**  
Social Science

Glee Club 1.

**BERGLUND, WILMA**  
Commercial

Glee Club 2, 3; Mixed Chorus  
3; Orchestra 3; Life Guard 2;  
Student Council 3; "Campus  
Daze."

**BETTIS, CLAUDE**  
Social Science

Glee Club 1, 2.

**BETZENDERFER, SHIRLEY**  
Commercial

Pep Club 1; Student Council 2;  
Commercial Club 2, Presiden  
3; Bumble "B" 2, 3; How Do  
You Do It Club 3; Drivers  
License Club 3.

**BOAK, MILDRED**  
Commercial

Glee Club 1, 2, 3; Mixed Chorus  
1, 2, 3; Gym Club 2, 3; Studen  
Council executive board 2;  
"Campus Daze."



**BORG, ADELINE**  
Commercial

Arts & Crafts Club 2, 3; Glee Club 2; Commercial Club 3; Chess and Checkers Club 3.

**BREWER, JUANITA**  
Commercial

Glee Club 1, 2, 3; Mixed Chorus 3; Gym Club 2; Commercial Club 3; How Do You Do It Club 3.

**BRILEY, DEAN**  
Commercial

Football 1; Track 1, 2, 3; Gym Club 2; Intra-mural Basketball 1, 2, 3; Hi-Y Club 3; How Do You Do It Club 3; Scrolllette 3.

**BROWN, GEORGE**  
Social Science

Intra-mural Basketball 1, 2, 3; Cheer Leader 3; Glee Club 1; Pep Club 1; Bumble "B" 2, 3; Hi-Y Club 3; How Do You Do It Club 3; Vocational Interest Club 3; Theatre Guild 1, 2; "Campus Daze."

**BRYSON, LUCILLE**  
Scientific

Mixed Chorus 2, 3; Glee Club 2, 3; Orchestra 1, 2, 3; Class Secretary 1; Student Council 1, 2; Gym Club 2, 3; Pep Club 1; "Campus Daze."

**BUECHLER, MILDRED**  
Commercial

Camera Club 2; Commercial Club 3; Gym Club 3.

**BUSH, MERLE**  
Commercial

Gym Club 2, 3; Intra-mural Basketball 2; Hi-Y Club 3; How Do You Do It Club 3.

**BUTLER, WILLIAM**  
Commercial

**CARPENTER, IMOGENE**  
Scientific

Debate 1; Declam 3; Treasurer Student Council 3; Bumble "B" 1, 2, 3; Quill and Scroll; Art Club 3; How Do You Do It Club 3; Theatre Guild 2, 3; Gym Club 3; Pep Club 1, 3.

**CARVER, ARTHUR**  
Commercial

Theatre Guild 1, 2; Gym Club 1, 2; Intra-mural Basketball 1, 2; Intra-mural Hockey 3.

**CASEY, EVERETT**  
Scientific

Band 1, 2, Librarian 3; Orchestra 1, 2; Science Club 2; Debate 1; Camera Club 1, 3; Junior Vice President; Intra-mural Basketball 2; Scrolllette 2; Editor 3; Quill and Scroll.

**CASOTTI, FRED**  
Commercial

Football 1, 2, 3; Track 1, 2; Chess and Checker Club 2; Sophomore Vice President.

**CISCO, LOIS**  
Commercial

Orchestra 1, 2, 3; How Do You Do It Club 3; Commercial Club 3.

**CLARKE, ARTHUR**  
Scientific

Band 1, 2, 3; Orchestra 1, 2, Manager 3; Quartet 2; Glee Club 1, 2; Art 3; Arts and Crafts 3; Camera Club 1, 2, 3; Scrolllette 2; Declam 1; "Campus Daze."

**COLE, DOROTHY**  
Commercial

Pep Club 2; Swim Club 2; Theatre Guild 2.

**CONANT, ORVILLE**  
Scientific

Science Club 3; Chess and Checker Club 1; Stamp Club 2; Radio Club 3; Gym Club 3.

**CORNISH, DONALD**  
Social Science

Art Club 3.

**CRISP, HAROLD**  
Scientific

Glee Club 2; Gym Club 2.

**CUNNINGHAM, ALYCE**  
Commercial

Gym Club 2.

**DE FRANCE, DONALD**  
Scientific

Band 1, 2, 3; Orchestra 1, 2, 3; Glee Club 1, 2, 3; Mixed Chorus 2, 3; Camera Club 1; Science Club 3; Arts and Crafts Club 1; "Campus Daze"; Natural Science Club 3.

**DORAN, EDWARD**  
Scientific

Gym Club 2, 3; Agriculture Club 2, 3; Science Club 2; Football 3; Student Council 3.

**EASTLUND, JOHN**  
Social Science

Football Manager 2, 3; Basketball Manager 3.

**EDSON, FLOYD**  
Commercial

Football 1; Intra-mural Basketball 1, 2; Theatre Guild 2, 3; Arts & Crafts Club 2; Agriculture Club 2, 3; Gym Club 2, 3.

**EISERMAN, LEO**  
Social Science

Band 1, 2, 3; Orchestra 1, 2; Secretary 3; Student Council 1, 2, 3; Hi-Y 3; Intra-mural Basketball 2, 3; Gym Club 1, 2; Intra-mural Baseball 2.

**EMERSON, ROSE**  
Commercial

Gym Club 2; Stamp Club 2.

**ENICH, MITCHELL**  
Social Science

Football 2, 3; Track 2; Sophomore Class President.

**ERICKSON, DOROTHY**  
Commercial

Mixed Chorus 1, 2, 3; Glee Club 1, 2, 3; Theatre Guild 2, 3; "Campus Daze."

**ERICKSON, VIRGINIA**  
Scientific

Scrolllette 3; Bumble "B" 1, Copy Editor 2, Feature Editor 3; Life Guard 1, 2; Art Club 1, President 2, 3; Arts & Crafts 1; Declam 1; Student Council 1; Pep Club 2, 3; Cheer Leader 2, 3; Quill and Scroll 2, President 3.

**ERVIN, ALMA**  
Commercial

Art Club 2; Theatre Guild 2, 3; Camera Club 3.

**EYTCHESON, RAYMOND**  
Commercial

Basketball 1, 2, 3; Student Council 1, 2; Vice President 3; Glee Club 1, 2, 3; Mixed Chorus 1, 2, 3; Track 1; Chess and Checker Club 3.

**EYTCHESON, RUSSELL**  
Commercial

Basketball 1, 2, 3; Football Junior Manager 2; Glee Club 1; Student Council 1.

**FAIRCHILD, MAXINE**  
Commercial

Commercial Club 2, 3; Glee Club 2; "Campus Daze"; How Do You Do It Club 3.

**FERRY, CLYDE**  
Commercial

Chess and Checkers 1; Band 1.

**FIELDS, ROBERT**  
Scientific

Band 1, 2, Librarian 3; Orchestra 1, 2, 3; Glee Club 2, 3; Mixed Chorus 2, 3; Quartet 2.

**FINCH, HARRIET**  
Scientific

Gym Club 3; Swim Club 3.

**FINLEY, PHYLLIS**  
Scientific

Glee Club 1; Band 1, 2, 3; Orchestra 1, 2, 3; Arts & Crafts 1, President 2; How Do You Do It Club 3; Bumble "B" 1, 2, 3; Student Council 3; Art Club 1, 2; Quill and Scroll 3.

**FISHER, CATHERINE**  
Commercial

Declam 2.

**FITZSIMMONS, JEANNE**  
Commercial

Pep Club 1.

**GASTON, ELON**  
Scientific

Band 1, 2; Glee Club 1, 2; Mixed Chorus 1, 2; Track 2; Gym Club 3.

**GASTON, VIRGIL**  
Arts & Crafts

Stamp Club 2, 3; Chess and Checker Club 2; Arts & Crafts Club 2, 3; Camera Club 3.

**GATHMAN, LILLIAN**  
Arts & Crafts

Theatre Guild 2; Home Ec Club 2.

**GIVENS, WILLIAM**  
Social Science

Swim Club 2, 3; Social Science Club 3.

**GLASPY, NORMA**  
Commercial

Commercial Club 2; Gym Club 2.

**GOOD, MAURICE**  
Commercial

Glee Club 1, 2; Hi-Y Club 1, 2; Student Council 3; "Campus Daze"; Mixed Chorus 2.

**GRIFFIN, DONALD**  
Social Science

Chess and Checker Club 3.

**GROTH, ROSELLA**  
Language

Theatre Guild 2, 3; Home Ec Club 2, 3.

**GUTTERRIDGE, BETTY JEAN**  
Commercial

Glee Club 2; Life Guard 2; Commercial Club 3; How Do You Do It Club 3.

**HALL, HARRIETT**  
Commercial

Home Ec 1, 2; Glee Club 2.

**HAGELEEN, WALDO**  
Social Science

Football 1, 2, Co-Captain 3; Basketball 1, 2, 3; Track 1, 2, 3; Senior Class President.

**HALVERSON, MIRIAM**  
Language

Scrolllette 2, Business Manager 3; Orchestra 1, Librarian 2; Life Guard 2, 3; Bumble "B" 1; Student Council 1; Vocational Interest Club 3; Pep Club 1.

**HANLEY, JOHN**  
Scientific

**HARDEN, WESLEY**  
Scientific

Glee Club 1, 2; Football Student Manager 2; Track Student Manager 2; Science Club 3; Social Science Club 3; Art Club 1.

**HARVEY, GLEN**  
Scientific

Football 3.

**HEATON, CLIFFORD**  
Commercial

Basketball 1, 2, 3; Theatre Guild 1, 2; Track 2, 3.

**HEITKAMP, DARLENE**  
Commercial

Glee Club 2, 3; Commercial Club 2, Secretary 3.

**HEITKAMP, VIRGINIA**  
Commercial

Swim Club 1; Commercial Club 1, 3; Gym Club 2; Glee Club 1, 2, 3.

**HERRICK, HARLAN**  
Language

Glee Club 1, 2, 3; Debate 1, 2, 3; Chess and Checker Club 2; Bumble "B" 1, 3; Scrolllette 3.

**HILL, JANET**  
Scientific

Bumble "B" 1, 2, 3; Vice President Quill and Scroll 3; Declam 1, 2, 3; Theatre Guild 1, 2, 3, President 2; Glee Club 1; "Tin Hero" 2; Secretary of Senior Class; Gym Club 3; Debate 1.

**HOYT, ROBERT**  
Commercial

Basketball 1; Stamp Club 2; Glee Club 2; Mixed Chorus 2; Track 1; Intra-mural Basketball 1, 2; "Campus Daze"; Ex-temporaneous Speaking 1.

**HUBBY, RUTH**  
Commercial

Art 1, 2; Glee Club 2; Arts & Crafts Club 2; Gym Club 3; Commercial Club 3; Pep Club 1; Scrolllette 3.

**HULL, ELIZABETH**  
Commercial

Pep Club 1, 2; Student Council 1; Vocational Interest Club 2.

**HULL, WESLEY**  
Arts & Crafts

Arts & Crafts Club 2; Agriculture Club 2, 3; Gym Club 2; Intra-mural Basketball 2; Football 1; Basketball 1.

**JAY, LOUISE**  
Commercial

Gym Club 2; Swim Club 2; Commercial Club 2; Home Ec Club 3.

**JENKINS, HANLEY**  
Scientific

Intra-mural Basketball 2; Agriculture Club 2, 3; Swim Club 2; Gym Club 2, 3; Social Science Club 3; Science Club 2; Arts & Crafts Club 3; Tennis 3.

**JIPP, RICHARD**  
Social Science

**JOHNSON, ARLENE**  
Commercial

Home Ec Club 2; Glee Club 2, 3; How Do You Do It Club 3; Commercial Club 3.

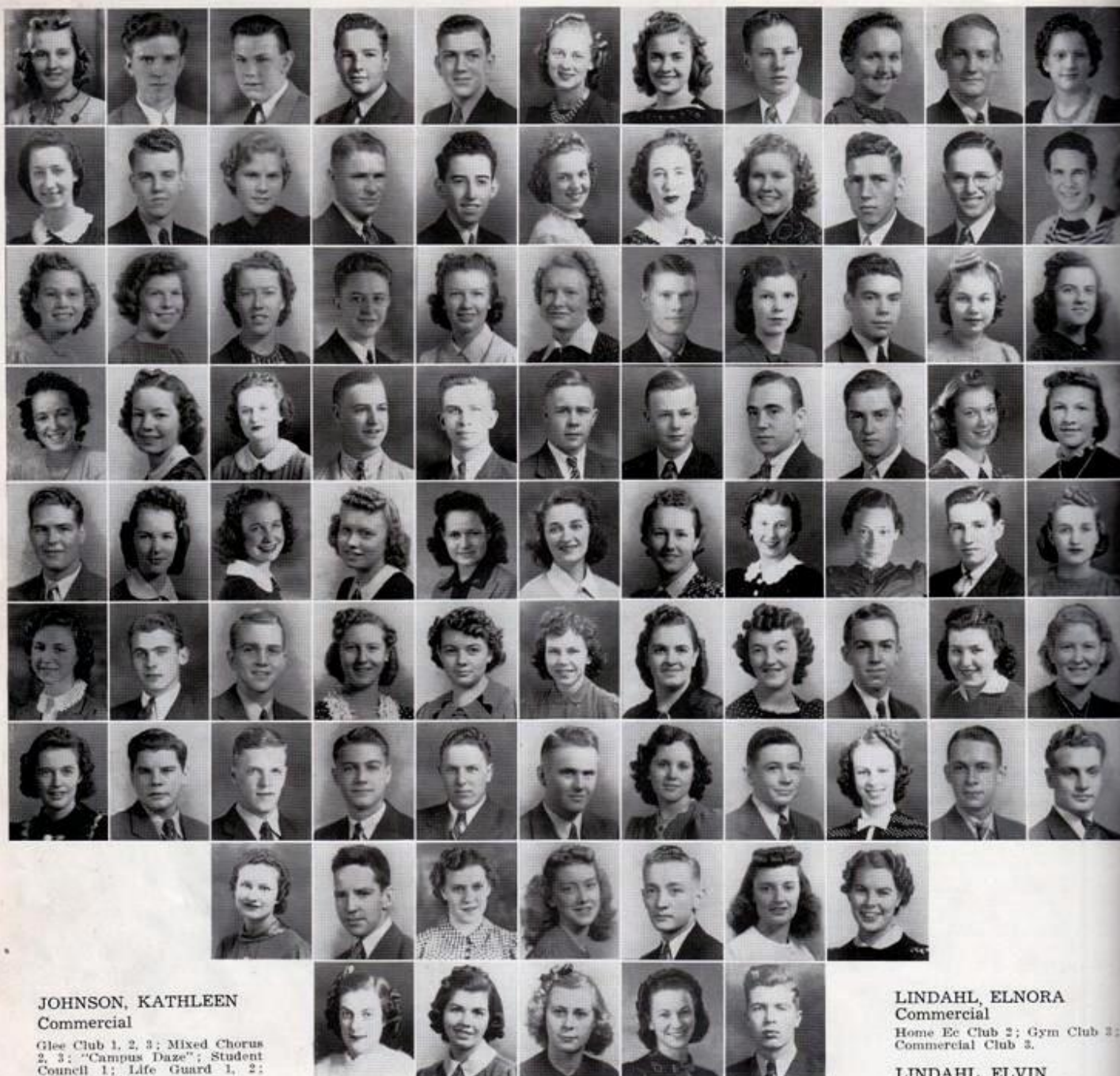
**JOHNSON, FRED**  
Commercial

Football 2; Basketball 2; Swim Club 2; Gym Club 3.

**JOHNSON, ILA MAE**  
Commercial

Gym Club 3; Glee Club 2, 3; Mixed Chorus 2, 3; Student Council 3; "Campus Daze."





**JOHNSON, KATHLEEN**  
Commercial

Glee Club 1, 2, 3; Mixed Chorus 2, 3; "Campus Daze"; Student Council 1; Life Guard 1, 2; Theatre Guild 2.

**KADING, BILL**  
Scientific

Theatre Guild 1; Debate 1; Swimming Team 2, 3; Glee Club 1, 2, 3; Mixed Chorus 1, 2, 3; Quartet 2; "Campus Daze"; Student Council.

**KARNS, JOHN**  
Scientific

Band 1, 2, 3; Arts & Crafts Club 2; Radio Club 3.

**KELLY, ROBERT**  
Scientific

Golf 2, 3; Debate 1, 2, 3; Bumble "B" 2; Theatre Guild 1, 2; Glee Club 1; Hi-Y 1.

**KREUTNER, NORMAN**  
Scientific

Glee Club 1, 2, 3; Mixed Chorus 2, 3; Science Club 3; Chess and Checker Club 3; "Campus Daze"; How Do You Do It Club 3.

**KRUG, LEONA**  
Scientific

Bumble "B" 1, 2, 3; Pep Club 1; Glee Club 1, 2, 3; Mixed Chorus 2, 3; Declam 1, 2; Art Club 1; Theatre Guild 3; "Campus Daze"; Student Council 2.

**KUECK, MARJORIE**  
Scientific

Orchestra 1, 2, 3; Band 2; Theatre Guild 1, 2; Declam 1, 2; Art Club 1; Bumble "B" 1; Pep Club 1; Student Council 2.

**LANG, FLOYD**  
Commercial

Swim Club 2, 3; Agriculture Club 2; Track 2, 3; Football 3; Gym Club 2.

**LARREW, MAXINE**  
Arts & Crafts

Glee Club 2; Home Ec Club 2.

**LAUB, WESLEY**  
Social Science

Football 1, 2; Swimming Team 1, 2; Track 2; Intra-mural Basketball 1, 2.

**LEBO, DOROTHY**  
Commercial

Commercial Club 3; Bumble "B" 1, 2; Glee Club 2.

**LEES, MARY ELIZABETH**  
Scientific

Bumble "B" 1, 2, Editor 3; Pep Club 1; Declam 1; Arts & Crafts Club 3; Home Ec Club 3; Theatre Guild 3; Orchestra 1; Quill and Scroll 2, Secretary 3.

**LEIDEN, CARL**  
Scientific

Glee Club 1; Chess and Checker Club 2; Science Club 2.

**LINDAHL, ELNORA**  
Commercial

Home Ec Club 2; Gym Club 2; Commercial Club 3.

**LINDAHL, ELVIN**  
Arts & Crafts

Arts & Crafts Club 1, 2, 3; Agriculture Club 2, 3.

**LINDMARK, ROBERT**  
Scientific

Science Club 1, 2, 3; Hi-Y Club 2.

**LIPPERT, VELOISE**  
Commercial

Glee Club 1, 2, 3; Mixed Chorus 2, 3; Pep Club 1; "Campus Daze"; Student Council 2.

**LUCAS, ALMA**  
Commercial

Arts & Crafts Club 2.

**McCASKEY, LORRAINE**  
Commercial

Pep Club 1; Gym Club 2, 3; Commercial Club 3.

**McDONALD, GOTHARD**  
Commercial

Agriculture Club 2, 3.



**McGAFFEY, FRANK**  
Scientific

Science Club Vice President 2; President 3; Glee Club 2; Mixed Chorus 2; Chess and Checker Club 2, 3; Swim Club 3; Student Council 3.

**MALLAS, PETE**  
Social Science

Basketball 2; Football 2.

**MARTIN, EDNA**  
Scientific

Student Council 1; Bumble "B" 1, 2, 3; Orchestra 1, 2, 3; Art Club 3; Gym Club 3; Quill and Scroll 2, 3; Pep Club 1.

**MEEHAN, DOROTHY**  
Scientific

Theatre Guild 3; Artiteers 2, 3; Arts & Crafts 3; How Do You Do It Club 3; Gym Club 3; Swim Club 2, President 3; Life Guard 2, 3.

**MOSS, VIRGINIA**  
Commercial

Band 1, 2, Secretary 3; Glee Club 1, 2, 3; Mixed Chorus 3; How Do You Do It Club 3; "Hollywood Bound."

**MOTE, KENNETH**  
Social Science

Basketball 2.

**MUNSON, BETTY**  
Commercial

Theatre Guild 2; Life Guard 2; Student Council 2; Swim Club 2; Commercial Club 1, 2; Bumble "B" 2, 3; How Do You Do It Club 3; Camera Club 1; Quill and Scroll 3.

**MYERS, HELEN**  
Commercial

Gym Club 2, 3.

**NELSON, ORVIL**  
Commercial

Gym Club 2; Agriculture Club 2; Intra-mural Basketball 2, 3; Hi-Y 3; How Do You Do It Club 3.

**NICKELL, BEULAH**  
Commercial

Glee Club 2; Commercial Club 3; Home Ec Club 2, 3; How Do You Do It Club 3.

**NORDSTROM, JACK**  
Commercial

Pep Club 2.

**NYGREN, MARY**  
Commercial

Glee Club 2, 3; Commercial Club 3; How Do You Do It Club 3.

**O'NEIL, KATHLEEN**  
Social Science

Home Ec Club 3; Pep Club 3.

**PARIS, GERALDINE**  
Commercial

Gym Club 2; Commercial Club 2, 3.

**PARRISH, MARJORIE**  
Commercial

Glee Club 2.

**PATTERSON, RUTH**  
Scientific

Pep Club 1; Student Council 1; Social Science Club 2; Theatre Guild 2, 3.

**PEEL, LEO**  
Arts & Crafts

Basketball 1, 2, 3; Intra-mural Basketball 2; Gym Club 3; Tennis 2.

**PETERS, ROY**  
Commercial

Football 1, 2; Basketball 1, 2; Track 1.

**PHIPPS, ASHLEY**  
Agricultural

Chess and Checker Club 2; Agriculture Club 2, 3; Arts & Crafts Club 2.

**PIPER, MYRON**  
Scientific

Intra-mural Basketball 1; Science Club 2, 3; Radio Club 2, 3; Arts & Crafts Club 2.

**POHL, DEWAYNE**  
Scientific

Football 2; Science Club 2, 3; Student Council.

**POHL, LEONARD**  
Commercial

Gym Club 1, 2, 3.

**PRUSHA, ELSIE**  
Arts & Crafts

Glee Club 1, 2; Theatre Guild 2.

**RECTOR, HELEN JEAN**  
Social Science

Social Science Club 3; Vocational Club 3; Declam 3; Student Council 3.

**REID, DARRELL**  
Commercial

Band 1, 2, 3; Orchestra 1, 2, 3; Glee Club 1, 2; Mixed Chorus 1, 2; Football 2, 3.

**REID, JEAN**  
Commercial

Gym Club 2; Commercial Club 2; How Do You Do It Club 3.

**ROBERTSON, SYLVIA**  
Language

Glee Club 1, 2, 3; Mixed Chorus Secretary 3; Student Council Secretary 3; Pep Club 3; "Campus Daze."

**ROSENGREEN, HELEN**  
Commercial

Student Council 1, 3; Gym Club 2; Glee Club 2; How Do You Do It Club 3.

**ROSS, MARJORIE**  
Commercial

Chess and Checker Club 3; Commercial Club 3.

**SCHULTZ, ANN**  
Language

Scrollette 3; Bumble "B" 3.

**SCHWIEN, CATHERINE**  
Commercial

Orchestra 1, 2, 3; How Do You Do It Club 3; Commercial Club 1, 2, 3; Home Ec Club 2.

**SHADLE, MARJORIE**  
Language

Glee Club 1, 2, 3; Mixed Chorus 2, 3; Bumble "B" 1, 2, 3; Life Guard 3; Pep Club 2, 3; Quill and Scroll 3; "Campus Daze."

**SHAEFFER, ARDYCE**  
Commercial

Home Ec Club 2.

**SHAEFFER, SAMUEL**  
Scientific

Basketball 1; Arts & Crafts 2; Golf 2.

**SILVEY, EVELYN**  
Commercial

**SMITH, NAOMI**  
Scientific

Orchestra 1, 2, 3; Glee Club 1, 2, 3; Mixed Chorus 2, 3; "Campus Daze."

**SMITH, RICHARD**  
Scientific

Hi-Y Treasurer 2; Student Council 1, 3; Science Club 2, 3; Radio Club 3; Swim Club 2; Intra-mural Basketball 2; Track Manager 3.

**STANDLEY, EUGENE**  
Scientific

Student Council 1, President 3; Band 1, 2, 3; Orchestra 1, 2, 3; Glee Club 1, President 2, 3; Mixed Chorus 1, President 2, 3; Science Club 2; Chess and Checker Club 2; Junior Class President; "Campus Daze."

**STARNER, WINONA**  
Arts & Crafts

Glee Club 1, 2, 3; Mixed Chorus 3; Art Club 1; Theatre Guild 3; How Do You Do It Club 3; "Campus Daze;" Trio 3.

**STATTON, ILA**  
Scientific

Pep Club 1; Arts & Crafts Club 2; Gym Club 3; Chess and Checker Club 3; How Do You Do It Club 3.

**STEUERWALD, VIRGINIA**  
Commercial

Orchestra 1, 2, 3; Band 3; Glee Club 1, 2, 3; Mixed Chorus 3; Pep Club 1; Gym Club 3; "Campus Daze."

**STUMBO, EARLENE**  
Commercial

Commercial Club 2; Declam 2; Gym Club 3.

**STUMBO, LA VONE**  
Commercial

Commercial Club 3; How Do You Do It Club 3.

**STURTZ, NORMAN**  
Commercial

Intra-mural Basketball 1, 2.

**SULLIVAN, KATHLEEN**  
Arts & Crafts

Theatre Guild, 1, 2, 3; Commercial Club 1, 2; Home Ec Club 3.

**SUNDQUIST, BERNADINE**  
Commercial

Pep Club 1; Gym Club 2; Theatre Guild 3; Commercial Club 3; Declam 2, 3.

**SWARD, WINNIFRED**  
Arts & Crafts

Pep Club 1; Commercial Club 2; Gym Club 3; Glee Club 3.

**SWIGERT, CLARENCE**  
Scientific

Swim Club 2.

**TABOR, MASON**  
Social Science

Football 1, 2, 3; Track 1, 2, 3; Student Council 1, 3; Chess and Checker Club 2; Gym Club 2.

**TAYLOR, EVAN**  
Social Science

Band 1, 2, 3; Mixed Chorus, 2, 3; Glee Club 2, 3; Intra-mural Basketball 1, 2, 3; Football 3; Gym Club 2; Track 2; Art Club 3; Chess and Checker Club 2; "Campus Daze."

**TEDROW, CHARLES**  
Social Science

Football 2, 3; Track 3; Intra-mural Basketball 2; Gym Club 1, 2; Hi-Y 1; Art Club 1; Camera Club 3.

**TESDAHL, THOMAS**  
Scientific

Glee Club 1, 2, 3; Mixed Chorus 1, 2; President 3; Student Council 1; Basketball 1; Football 1; Intra-mural Basketball 1; Art Club 3; Senior Class Vice President.

**THACKER, BETTY JEAN**  
Commercial

Glee Club 1, 2, 3; Mixed Chorus 2, 3; Dramatics 1; Commercial Club; How Do You Do It Club 3.

**THOMPSON, CLYDE**  
Arts & Crafts

Swim Club 2; Camera Club 3; Student Council 1.

**TODD, NORMA JEAN**  
Language

Theatre Guild 1, Vice President 2, President 3; Orchestra 1, 2.

**VERNON, PAUL**  
Commercial

Glee Club 2.

**VESEY, JACK**  
Social Science

Intra-mural Basketball 3.

**VOEGTLIN, JUNE**  
Commercial

Home Ec Club 2, 3; How Do You Do It Club 3; Glee Club 3; Commercial Club 3.

**WALKER, ROBERT**  
Social Science

Football 3.

**WESTBERG, ARLENE**  
Commercial

Gym Club 2, 3; Commercial Club 3; Glee Club 2.

**WHITEMAN, VIRGINIA**  
Commercial

Home Ec Club 3.

**WIGGINS, CLAIRE**  
Arts & Crafts

**WILLIAMS, DOROTHY**  
Commercial

Chess and Checker Club 2; Theatre Guild 2.

**WILLIAMSON, DOROTHY**  
Commercial

Home Ec Club 2; Commercial Club 2, 3; How Do You Do It Club 3.

**WILLIS, ARLENE**  
Commercial

Debate 1; Bumble "B" 1, 2, 3; Theatre Guild 1, 2, 3; Commercial Club 2, 3; Student Council 1; How Do You Do It Club 3; Pep Club 2, 3.

**WILSON, JOAN**  
Social Science

Theatre Guild 2, 3; Glee Club 2, 3; Mixed Chorus 2, 3; Student Council 2.

**WRIGHT, BETTY**  
Commercial

Commercial Club 2, 3; Gym Club 2; Pep Club 1.

**YOUNG, DOROTHY**  
Commercial

Commercial Club 2, 3; Gym Club 2.

**ZIMBECK, GLENN**  
Arts & Crafts

Radio Club 3.





The Junior College staff of librarians is shown here with Harlan Herrick, who is borrowing a book. They are: Anna Lou Pendarvis, Helen Barrows, Norma Jean Cline, Emma Holmes, and Wanda Fronsdaahl.



The Junior College play, coached by Miss Lamb, was entitled "Button, Button." The cast of characters was as follows: Seated: Josie—Marian Allen; Phoebe Weed—Elizabeth Handschin; Mrs. Woodhouse—Avis Dodge; Mrs. Rita Weed—Helen Barrows.

Standing: Emery—Jerry Wells; Maude—Helen Sublette; Ed—Leland Rector; Mr. Woodhouse—Kenyan Wissler; Button—Donn Steward; and Al—Bill Chance.



# JR. COLLEGE

Only a few of us realize and appreciate the fact that we have, in the very heart of our school, perhaps the most valuable cultural organization of our community—our own Junior college.

Established in 1927, this institution has stood the test of time—twelve, almost thirteen years—years which have proved to be a real test. Now, in 1940, it still remains, half again as large as the year of its birth, when fifty students registered for the opportunities it offered. The total enrollment in the thirteen years of its existence has been 743 students, seventy-four of whom are in the 1939-1940 registry. The enrollment reached its highest point last year, when eighty-five students registered in Boone Junior College.

It is gratifying to note that over fifty per cent of all students who have enrolled have continued their education by transferring their credits to some advanced college or university.

The success of this growing organization may be attributed

\* \* \*

Although they had a poor season, the J. C. Bears rallied and showed plenty of fighting spirit.



# J R . C O L L E G E

mainly to the efforts of J. R. Thorngren, Dean of the Junior College since it was first created. Other members of the faculty include Karl Longnecker, Grace Slosson, Ethel Whitney, Welker Bechtel, and H. L. Cunningham. Clarence Bain, coach; Catherine Jones, physical director; Sybil Lamb, dramatic coach; Kenneth Hakes, musical director; and Zoe Stevens, librarian, also serve the junior college.

Regularly offered to the students who desire to complete four years of college work is the Liberal Arts Course, requiring two years of junior college for completion, after which the graduates in this course may transfer their credits to almost any university of the middle west.

Our junior college is still in its youth, it is true. But in these years of higher civilization, when the preservation of our democracy is constantly becoming more dependent on the education of the people, who knows into what great institution it might develop, in twenty years, or even ten?

• • •

Accompanied by Dean Thorngren and their director, Mr. Hakes, the Boone Junior College Mixed Chorus journeyed to Eagle Grove to take part in the Junior College Music Festival. In the spring the chorus made a short tour singing at various Boone County High Schools.

Your life will not be in danger with boys like this patrolling the streets around our school. Donn Steward is pictured; other safety patrol boys are Kenneth Finch and Edgar Carlson.

• • •

Dean Thorngren is popular with the J. C. students as well as members of his high school classes.

• • •

In the act of dissecting jelly fish in the junior college lab are Bob Cranmer and Norma Jean Cline.





# FACULTY RHYMES

## MISS JONES

She teaches the girls the best thing in life—  
How to keep bodies fit and forget worldly strife.  
Miss Catherine Jones—"Cottie" for short—  
Is a favorite of many, full of jokes and retorts.

\* \* \*

## MR. THORNGREN

J. R. Thorngren is his name,  
Dean of Junior College.  
For many years he's played the game,  
Of giving students knowledge.

\* \* \*

## MISS SHALER

Short and plump and sort of tough,  
While in her class you can't act rough.  
When she's around you cannot shirk  
'Cause, boy oh boy, she makes you work!

\* \* \*

## MR. WATSON

Doctor Watson is his name  
His personality's brought him fame,  
He who does so nattily dress  
Teaches art at B. H. S.

\* \* \*

## MR. HARTLEY

Mr. Hartley's dark and tall,  
While in his class you hit the ball.  
When you try to get some rest,  
He slaps you with a nice hard test.

\* \* \*

## MR. QUINN

His pleasant face we shall see no more  
In the halls of old Boone Hi.  
As a teacher, my friends, he was never a bore—  
Mr. Quinn was an "all-right" guy.

\* \* \*

## MR. HILL

All the girls around him file,  
Falling for his sweet smile.  
Of most of the teachers they get their fill,  
But of Coach Hill they never will.

\* \* \*

## MR. BECHTEL

Don't have Bec., if you don't want to work,  
He'll slug you sure, if you're lazy and shirk.  
He's small in stature, but big in brains,  
It isn't our knowledge, it's the text, he blames.

## MR. FIELDS

He leads the band and the orchestra too.  
In Mechanical Drawing he makes the studes stew.  
His humor is sublime; it's seldom he's surly,  
He's short and stocky and his hair is curly.

\* \* \*

## DREAM OF THE CLASSICS (With apologies to Poe)

## MISS LINDERBLOOD

Once upon a P. M. dreary, a class pondered, weak and  
weary,  
Over Julius Caesar (the old, conceited bore!),  
While it nodded, gently napping, suddenly there came  
a tapping,  
'Twas the teacher's angry rapping—rapping on the  
classroom floor.  
"How many have the lesson?" cried she, angry to the  
very core.  
They raised their hands, all twenty-four,  
And Miss Linderblood quoth,  
"Well, forevermore!"

\* \* \*

## MR. EVANS

Like a ghost he flits about the halls,  
Down the stairs and along the walls.  
Now you see him; now you don't—  
You just can't be where Evans won't.

\* \* \*

## MR. FISHER

There's no need to fear his frown or his height;  
His bark, you'll find out, is worse than his bite.  
Meet him, and suffer the jokes that he's told,  
And you'll find Mr. Fisher a man of pure gold.

\* \* \*

## MR. CUNNINGHAM

"I'll dock ya on that!"—"Well, whadja sposed to  
learn?"  
"Speak up, there, Jones! Ya know it's your turn!"  
His words are stern, his humor mellow,  
But Mr. Cunningham's a regular fellow.

Student photographers who contributed pictures for  
this book are: Everett Casey, editor-in-chief; Arthur  
Clarke, Ila Mae Johnson, John Whitaker, and Eugene  
Crandall.



# A L U M N I

Boone High School graduates have found worthwhile positions in many fields, not only in Boone but in other cities throughout the United States. On this page you see a few of them whom our candid camera man happened to surprise at their work. It is always nice to keep in contact with former students.

\* \* \*

Harlan Weeks is a reporter for the Boone News-Republican. Janice Wegele and Genevieve Wilson also are employed at this office.



Hattie Hilts serves the "Drive In" customers with a smile.



Rudy Carlson keeps the automobiles running with Cities Service gas and oils.



The Western Union office employs Walter Flockhart.



Robert Erickson is a clerk at Peoples Clothing Store.



"Hap" Morris is also a clerk in Peoples Clothing Store.



Ray Malmberg, formerly manager of the "Drive In" grocery, is now working in Des Moines.



# ADVERTISERS

We wish to thank the following patrons of the school for having helped make this book possible. It is hoped that all who enjoy the Scrollette will show their appreciation by giving these business and professional men their support.

\* \* \*

Dr. R. B. Allender, Dentist  
 Anderson Plumbing  
 Boone Blank Book Company  
 Boone Dairy, Inc.  
 \*Boone State Bank and Trust Company  
 Boyd Bottling Company  
 Briant Baths  
 Carswell Motors  
 \*Citizens National Bank  
 Coan Grocery, Sparks & Paulson Meats  
 \*Coca-Cola Bottling Company  
 Crary Coffee Shop  
 Helen Dahlien Beauty Shop  
 D & M Shoe Store  
 Dolly's Shop  
 \*Donaldson's Grocery and Market  
 Doran & Doran, Attorneys  
 Drive In Grocery and Market  
 R. T. Duckworth, Insurance  
 Dyer, Jordan & Dyer, Attorneys  
 Farmers Creamery  
 Finley Beauty Shop  
 Fox Studio  
 Gift Mart  
 Dr. R. E. Gunn  
 Leonard E. Hanson, Plumbing and Heating  
 S. Hanson Lumber Company  
 Hawkeye Launderers, Dry Cleaners  
 Herrald Drug Company  
 Holcomb Printing Company  
 Dr. H. S. Hill, Dentist  
 Hook Jewelry and Optical Company  
 Dr. O. W. Julander  
 Dr. T. E. Kane

Kastner Abstract Company  
 Kemble-Smith Greenhouse  
 Jule Kueck, Jeweler  
 \*Lainson, Boone's Photographer  
 Dr. C. W. Likely  
 Lincoln Tavern, Waldman and McEntaffer  
 Lippert Bros., General Contractors  
 McCaskey's Cafe  
 McHose Electric Company  
 Miller Drug Company  
 Drs. Myers, Whitehill and Whitaker  
 P. T. Nelson Sons Lumber Company  
 Dr. J. E. Nutt  
 O'Connell Bros., Drugs  
 Otis Lumber Company  
 H. V. Patterson Insurance Agency  
 \*Peerless Dairy Products Company  
 J. C. Petersen Company  
 Red Arrow Stores  
 Redeker Furniture Company  
 Riekenberg's  
 \*Rialto and Princess  
 Rocho Bros., Inc.  
 Ruschmeyer Beauty Shop  
 Dr. R. E. Sadler, Dentist  
 Schmidt's Ready-to-Wear  
 Smith's Taxi Service  
 Soft Water Service  
 Dr. H. J. Spies, Dentist  
 Spurgeon's  
 \*Standard Printing Company  
 Dr. C. L. Updegraff  
 Wester Furniture Company  
 White's Dress Shop  
 Wilson Drug Company

\*Twice regulation amount for advertising.

\*Three or more times regulation amount for advertising.