

Scerollette

1936

Errol Olson
Joyce Olson

THE
SCROLLETTE
1936

PUBLISHED BY
The Senior Class
BOONE HIGH SCHOOL

Joyce Olson

FOREWORD

A YEAR at a school carries memories
That no one ever can sever;
Like a stone that is thrown in a quiet pool
And the ripples go on forever.

But the ripples grow faint with the passage of time
And there is a dimming of rapture.
The memories forgot form a part of our life
That sometimes we cannot recapture.

And so we've endeavored to salvage a few,
And, maybe, some several years later
You'll open this book and with reverent look
Remember your first alma mater.





DEDICATION

BECAUSE of his inspiration as an instructor;

BECAUSE of his enthusiastic support of every phase of
work or play in Boone High School;

BECAUSE of his ever-present patience, sympathy and
sense of humor,

We, the 1936 Scrollette Staff, dedicate this book to

NATHAN ALLEN FIELDS



Senior High Faculty



Dachler Fields



Harvey Lamb



C. Carlson



Moran Benson



Bechtel



D. Hansen



Crawford



Quinn



Drake



Hicks



Roberts



Van Ness

Wooten



McIntyre



Murray



Mau



Whitney



Johnson



Hartley



Evans



Lonsnecker

Cunningham



Lee



Shaler



S. Hansen



Weber



Gustafson



Thorngren

Schorman



Stevens

W. Bechtel
Chemistry

Grace Murray

Senior High School Faculty

GEORGE S. WOOTEN	Superintendent
HUBERT J. VAN NESS	Principal
LAURANCE EVANS	Assistant Principal—Social Studies
WELKER BECHTEL	Chemistry, Mathematics
CAROLYN CARLSON	School Nurse
EVELYN CARLSON	Physical Training
ANNA CRAWFORD	Commercial
HAROLD R. CUNNINGHAM	Physics, General Science
FERDINAND DAEHLER	Manual Training
WILBUR DRAKE	Agriculture, Mathematics
NATHAN FIELDS	Manual Training, Mechanical Drawing, Music
FRANCES GUSTAFSON	Mathematics
DAGMAR HANSEN	English, Journalism
STENA HANSEN	Social Science
WILLIAM HARTLEY	Commercial
ELOISE HARVEY	Civics, Social Science
NAOMI HICKS	Commercial
ANNA JOHNSON	Domestic Science
SYBIL LAMB	English
JENNIE LEE	Art
LOUISE LINDERBLOOD	English, Latin
KARL LONGNECKER	Biology
CECIL T. MAU	Athletics, Science
FAY McINTYRE	Science
GRACE MURRAY	Mathematics
LYLE QUINN	Vocations
CLEO ROBERTS	Athletics, Physical Training
ELEANOR SCHORMAN	German
DORIS SHALER	French, English
HELEN SIEVERS	Music
ZOE STEVENS	English, Library
JOHN R. THORNGREN	Government, Sociology
LOLA WEBER	Commercial
ETHEL WHITNEY	Social Science

SCHOOL BOARD

HENRY L. WALLACE, President

L. R. JOHNSON, Secretary

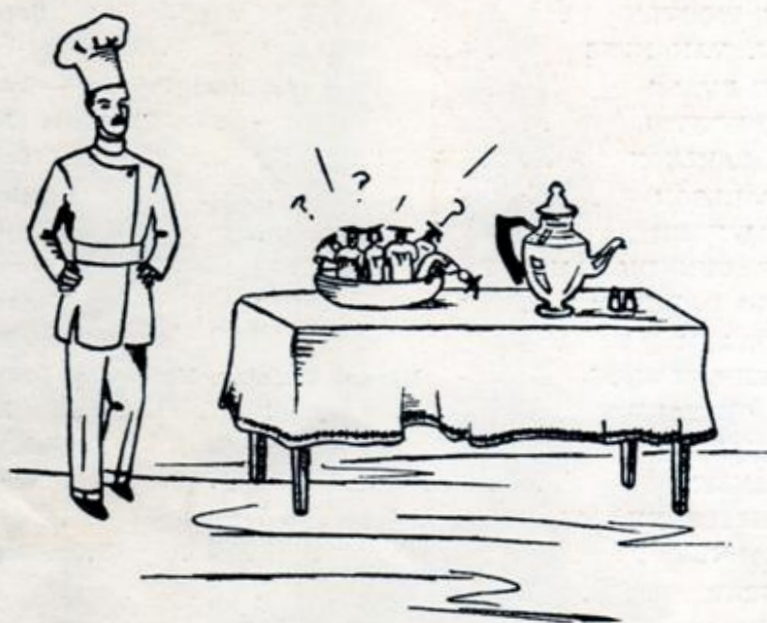
R. J. MEYERS, Treasurer

S. T. TESDAHL

HARLEY EDGERTON

F. W. NELSON

A. J. EDDY



THE biscuits were done and the chef slid them out
 To make room for another tray.
 They were glad to get out for the oven was hot;
 All in all, they were feeling quite gay.

Not stopping to wonder what next was in store,
 They watched while their fellows were beaten;
 And then they were seized, and brutally squeezed,
 And broken to bits, and were eaten.

The moral, my friends, to this little tale
 Is short and not hard to relate:
 If you think you are done when you're merely begun,
 You'll prob'ly end up being "ate".

SENIOR CLASS OFFICERS

President, John Allender

Vice President, Marvin Lindmark

Secretary, Ina Isakson

Colors: Green and white.

Flower: Four leaf clover.

Motto: "Not to the top, but still climbing".

Senior Prophecy

Somewhere within our sainted school
There is a hidden room.

Within it's dark and dank and cool
And silent as a tomb.

But once a year, I must confess,

Two spectres meet and rhyme;

The one is Old Man B. H. S.

The other, Father Time.

And student life and student love

And mystic rhyme they mix;

And thus forecast the future of

The class of "36".

Two members of the Scrollette Staff

Did stumble on this room,

And there they found an epitaph

Inscribed upon a tomb:

"Here doth lie the future of

The graduating class".

And 'neath our feet we found the sheet

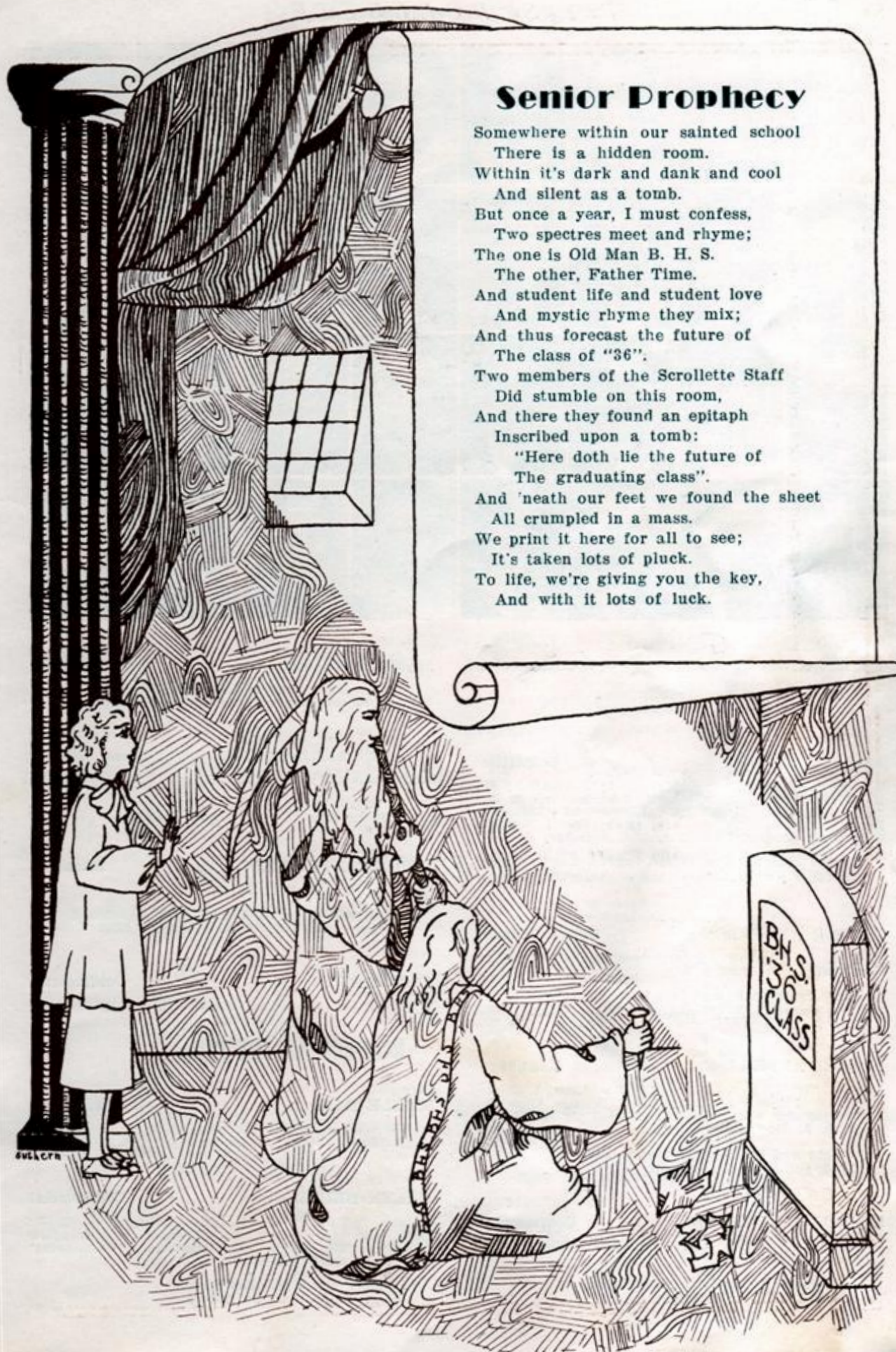
All crumpled in a mass.

We print it here for all to see;

It's taken lots of pluck.

To life, we're giving you the key,

And with it lots of luck.





HELEN ADES

Commercial

Quiet, reserved, yet awfully smart,
As a bookkeeper she'll do her part.

JOHN ALLENDER

Scientific

Senior Class President; Glee 1, 2, 3; Football 3; B. H. S. Players 1, 2, 3; Boys' Science Club 2, 3; "Luncheon for Six"; "A Glimpse of Treasure Island"; "The Bells of Christmas"; Social Science Club 2, 3; Student Council 1, 2, 3. Secretary 3.

You're smart, you're clever, you're wit never stops;
In other words, Johnny, you're really the tops.

BLAINE ANDERSON

Social Science

Hi-Y 1, 2; Football 2; Interclass Basketball 1, 2; Kittenball 2, 3; Hockey 3.

The crystal ball says he's quite lazy.
The thoughts he thinks are rather hazy.

LOUISE ANDERSON

Language

Bumble "B" 1, 2, 3. Editor 3; Glee Club, 1, 2, 3; B. H. S. Players 1, 2, 3; Girls' Science Club 2; "Luncheon for Six"; Student Council 2; Quill and Scroll 2, 3; Declamatory 1.

Bright and blonde and true as steel,
She's got Anglo-Sax appeal.

MAURINE ANDERSON

Commercial

Social Science Club 3; Commercial Club 2, 3; Student Council 1.

The age old question's present here:
Married bliss, or a bright career?

MAXINE ANDERSON

Commercial

This maiden craves domestic life,
And so the farmer takes a wife.

BURTON ARRINGDALE

Social Science

Basket-ball 2, 3; Glee Club 3.

In basket-ball he knows his game,
Will he add "Coach" to his name?

ROBERT ATHERTON

Scientific

Boys' Science Club 2, 3; Hi-Y 3.

With intelligence and good looks combined,
A responsible position he's sure to find.

JAMES ATTEY

Commercial

Wrestling 3; Interclass Basket-ball 1; Hi-Y 2, 3; Band 1.

His happiness is very deep
When he is left alone to sleep.

MERLE BASS

Agriculture

He will come into his own,
Explorer of the Arctic zone.

HELEN BEHLING

Commercial

Bumble "B" 1, 2, 3; B. H. S. Players 1, 2, 3; "Luncheon for Six"; "A Glimpse of Treasure Island"; "The Bells of Christmas"; Commercial Club 2, 3; Quill and Scroll 2, 3.

A quiet girl with quiet fun;
What she has to do gets done.

RICHARD BENSON

Social Science

Basket-ball 1, 2, 3; Glee Club 1, 2; Orchestra 1, 2;
Social Science Club 3; Band 1, 2, 3; Student Council 1.

Patient, ambitious, good, and kind;
You'll be a doctor, for you've the mind.

DONALD BERGLUND

Commercial

Wrestling 3; Tennis 3; Interclass Basket-ball 1, 2;
Glee Club 1, 2, 3; Masque and Buskin 2, 3; "A Glimpse of Stephen Foster"; "Thanksgiving in Early Boston"; "Let Who Will Be Clever"; "A Lesson in Greek History"; Social Science Club, 2, 3; Commercial Club 2, 3, Secretary 3; Band 1, 2; Student Council 1.

Don is behind the damsel's sigh,
Whatta voice and whatta guy!

ERMA BLAESS

Commercial

Life Guard 3; Glee Club 1.

Quiet type and yet don't blame her;
She may become a lion tamer.

RICHARD BLOOMFIELD

Commercial

Scrollette 3; Commercial Club 2, 3.

A second Burbank, judging from his name,
He'll write a book of horticultural fame.

DEANE BOOTH

Social Science

Basket-ball 2, 3; Commercial Club 3.

A pleasant girl with poise and grace;
She has her fortune in her face.

JAMES BOYD

Commercial

Kittenball 2, 3; Hi-Y 2; Commercial Club 2, 3.

Though kittenball's his favorite game;
In basket-ball, he'll make his name.

JOYCE BREEDLOVE

Language

Glee Club 1, 2, 3; Mixed Chorus 2; Orchestra 1, 2, 3;
B. H. S. Players 1, 2, 3; Girls' Science Club 3,
President 3; Social Science Club 3; Band 1, 2, 3;
Student Council 1; "And Let Who Will Be Clever".

A ready smile and sparkling eyes,
The cause of many manly sighs.

JEANNETTE BRIDGES

Commercial

Social Science Club 3.

Wedlock seems to be her fate;
A famous man will be her mate.

HAROLD BRILEY

Scientific

Glee Club 1; Boys' Science Club 1; Hi-Y 1, 2;
Interclass Basket-ball 1, 2; Football 1, 2; Kittenball 2; Basket-ball 1; Hockey.

The teacher's worry and concern;
But wait awhile—the worm will turn.

LOREN BUECHLER

Social Science

Glee Club 1, 2, 3; Hi-Y 2, 3; Social Science Club, 2, 3; Student Council 1.

One fine kid, and so polite,
He'll be his employer's great delight.

MARVIN BUECHLER

Scientific

Glee Club 1, 2; Boys' Science Club 2, 3; Hi-Y 2.

A farmer boy with city ways;
He'll give them up, one of these days.

FRANCIS BUSS

Commercial

Football 2, 3.

He's young and healthy—time will tell,
Whatever he does, he'll do it well.

ELIZABETH CARLSON

Commercial

To this pretty girl we have not the answer;
Maybe she'll become a dancer.

LEONARD CARLSON

Scientific

Carpentry will be his work;
Name the job and he'll not shirk.

MORRIS CASE

Scientific

Football 2, 3; Basket-ball 1, 2, 3; Glee Club 1, 2;
B. H. S. Players 1, 2, 3; Hi-Y 2; Boys' Science Club 2, 3; Social Science Club 3; Student Council 1, 2, 3.

Intelligent, dependable, a fine athlete,
A boy whom nothing will ever defeat.

GARY CHAMBERS

Scientific

B. H. S. Players 1, 2, 3; "And Let Who Will Be Clever"; "A Glimpse of Treasure Island"; Hi-Y 2, 3; Student Council 2; Bonita Club 1, 2, 3.

A radio fiend—a good one too,
Fame and fortune will come to you.

MARGUERITE CHRISTENSEN

Scientific

Basket-ball 1; Orchestra 1, 2; Debate 1; B. H. S. Players 2, 3; "Hot Copy"; Social Science Club 2, 3.

She'll end up in Hollywood,
And in the place where Garbo stood.

DOROTHY CHRISTIANSON

Commercial

Commercial Club 2, 3.

A clerk, a teacher, or a spouse;
No matter what—she'll rule the house.

VONIS CHRISTIANSON (EALY)

Commercial

Life Guard 1, 2; Glee Club 1; Masque and Buskin 2, 3; "A Glimpse of Stephen Foster"; "Thanksgiving in Early Boston"; Social Science Club 3; Commercial Club 2, 3.

Vonis is mistress of her own fate;
She quit school and hooked a mate.

CLIFTON CLARK

Social Science

Basket-ball 3.

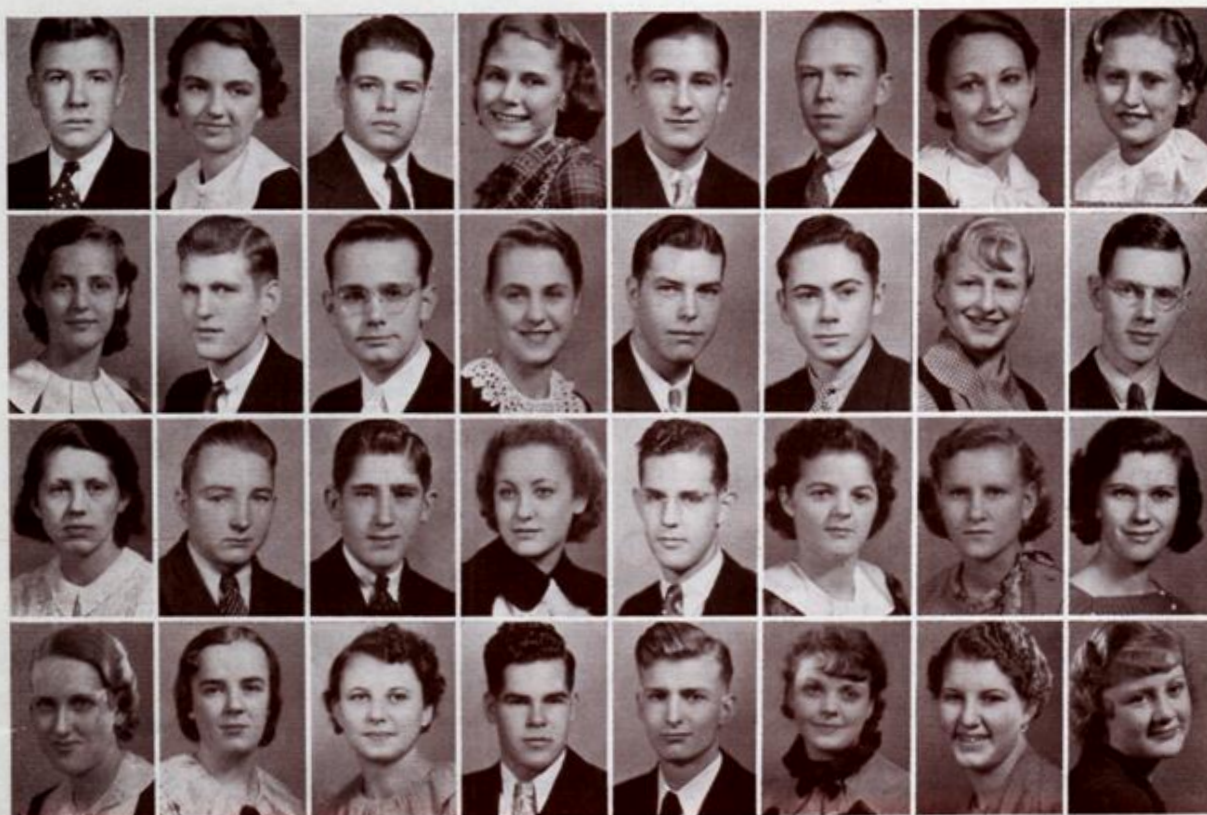
A cheerful boy with a heart that's true,
Keep that willingness and you'll come through.

ELEANOR COON

Language

Glee Club 1; Declamatory 2, 3; Social Science Club 3; Student Council 1.

A lively girl with lots of pep,
Whate'er she does, she'll be in step.

**MAX CORRICK**

Scientific

Glee Club 1, 2, 3; Orchestra 1, 2, 3; Band 1, 2, 3.

A tune in his head, a baton in his hand;
Here comes the leader—"strike up the band".

ISABELLE CROUSE

Language

She's modest, retiring, quiet, and sweet,
We may add in French parley, "Elle est tres petite".

RONALD CROUTHAMEL

Scientific

A mighty man from stem to stern,
There's plenty in life for him to learn.

EMILY CRUIKSHANK

Language

Glee Club 1, 2, 3; Masque and Buskin 1, 2, 3; Girls' Science Club 3; Social Science Club 1, 2, 3; "A Glimpse of Stephen Foster".

Dark, distinctive, lots of poise,
Likes to dance and, likes the boys.

JAMES CURTIS

Arts and Crafts

Football 1, 2, 3; Glee Club 1, 2, 3; Hi-Y 1, 2, 3;
Student Council 1, 3; Bonita Club 1, 2, 3.

In swimming or in drawing his strokes are always true;
And when it comes to singing, that guy knows what to do.

LOWELL CUTLER

Scientific

Band 2, 3.

He's given to tricks, and jokes, and such;
But he has fortune within his clutch.

GERALDINE DANILSON

Commercial

A laughing girl and lots of fun;
She's liked and admired by everyone.

BERNICE DAVIS

Language

Bumble "B" 1, 2, 3; Glee Club 2; Masque and Buskin 2, 3; Social Science Club 3; Student Council 2; Quill and Scroll 2, 3.

Pep and talent and lots of fun
Make this girl a friend to everyone.

EVELYN DEBNER

Commercial

Bumble "B" 1, 2, 3; Glee Club 1, 2, 3; Girls' Octette; B. H. S. Players 3; "A Glimpse of Stephen Foster"; "The Bells of Christmas"; Social Science Club 2, 3; Secretary 3; Student Council 2, 3; Commercial Club 2, 3; Quill and Scroll 3.

An athletic girl, we must confess;
A Phys. Ed. or we miss our guess.

BERT ELSBERRY

Commercial

Books and he are enemies,
But there's a gal he tries to please.

HAROLD FAIRCHILD

Scientific

Orchestra 2; Hi-Y 3; Social Science Club 3; Band 1, 2, 3.

His future will be super-fine;
Insurance seems to be his line.

54719
36

BETTE FICK

Commercial

Bumble "B" 1, 2, 3, Associate Editor 3; B. H. S. Players 1, 2, 3; "And Let Who Will Be Clever"; Commercial Club 2, 3; Student Council 2; Quill and Scroll 2, 3, Secretary 3, President 3; "A Glimpse of Stephen Foster"; "The Bells of Christmas".

She won laurels for what she wrote;
Sne'll be an authoress of note.

OREN FINCH

Commercial

His slogan will be "We clean 'em clean",
His work will be in gasoline.

Howard Findley
HOWARD FINDLEY

Scientific

Glee Club 1, 2, 3; Masque and Buskin 3; "A Lessor in Greek History".

Fate will lift him to the skies;
In airplanes his future lies.

VICTORIA FIRNHABER

Commercial

Glee Club 2.

A friendly girl with a heart of gold,
A stenographer's job she's sure to hold.

HAROLD FISHER

Scientific

Orchestra 1, 2, 3.

A pleasant boy with lots of friends,
Toward the business world his future tends.

MARGUERITE FITZSIMMONS

Language

Bumble "B" 2, 3; Glee Club 1, 2, 3; Social Science Club 3; Quill and Scroll 3.

A musical name and great blue eyes,
Toward the top we're sure she'll rise.

WALTER FLOCKHART

Commercial

Boys' Science Club 3.

This boy knows his radio
From Major Bowes to Hi De Ho.

WILLARD FLOCKHART

Commercial

Hi-Y 3.

His life replete with honest toil
He'll make a fortune from the soil.

JEAN FRY

Language

Scrollette Senior Editor 3; Life Guard 2, 3; Swimming Exhibition 1, 2; Volleyball 2; Glee Club 1, 2, 3; Masque and Buskin 1, 2, 3; Social Science 3; "Thanks-giving in Early Boston"; "A Lesson in Greek History".

Her talents are always being paged.
Will she wed the one to whom she's engaged?

JAMES GILBERT, Jr.

Commercial

Glee Club 1; Hi-Y 2, 3.

The silent man of age old fame,
In stenography he'll make his name.

MARIE GILSON

Commercial

Commercial Club 2, 3.

A modest girl with quiet ways,
Her fortune reads "happy days".

ELIZABETH GODWIN

Scientific

Girls' Science Club 3.

A quiet girl, and awfully shy,
Ambition still will send her high.

BETTY GOSS

Commercial

Volleyball 2, 3; Basket-ball 3.

An office worker she will be,
Successful? Well, we'll wait and see.

ELIZABETH GRABAU

Arts and Crafts

Glee Club 2, 3.

A stately girl with a cheery smile,
Who will do many things worth while.

FRANCES GRIGGS

Commercial

Despising rats and hating frogs,
She'll own a home for cats and dogs.

GLADYS GRILL

Commercial

Glee Club 1, 2; Orchestra 1; Student Council 1.

Her future behind the counter lies
Selling collars, gloves, and ties.

Willard Hall
WILLARD HALL

Scientific

Sophomore Class Secretary; Basket-ball 1, 2, 3; Football 1, 2, 3; Golf 1, 2, 3; Boys Science Club 1, 2, 3; Student Council 1, 2.

His golf is known both near and far;
He'll go through life in less than par.

MAX HALL

Scientific

Wrestling 1, 2; Interclass Basket-ball 1, 2.

A quiet manner, a desire to please,
And perseverance will grant you ease.

MILDRED I. HARKER

Social Science

Volleyball 1, 2, 3; Basket-ball 1, 2, 3; Glee Club 1, 2; Social Science Club 3.

Lives for fun—up to the minute,
Enjoys life for what there's in it.

ARMINTHA HARRIGAN

Commercial

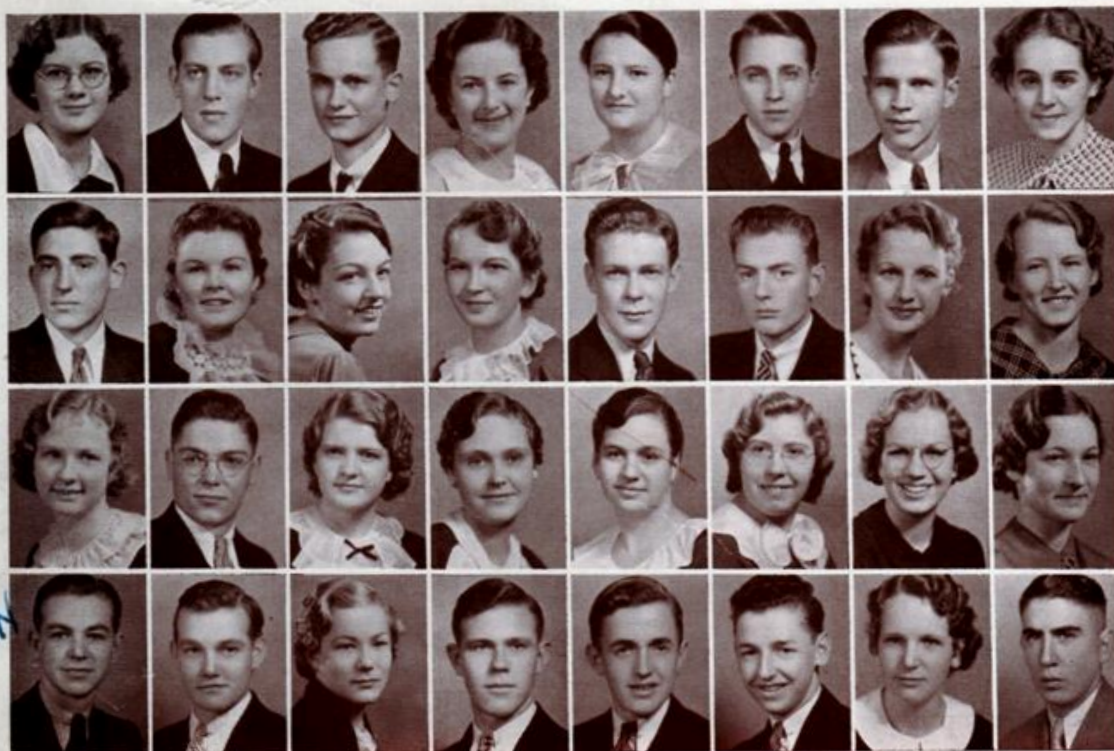
As a nurse she'll aid the hurt,
Or maybe she will marry Bert.

ARLENE HARRIS

Commercial

Glee Club 1.

Laughing, dancing, pretty too;
She loves the males—well wouldn't you?



DARLENE HARRIS
Life Guard 3; Glee Club 1.

The dark haired twin with lots of class,
A married life for this young lass.

KENNETH HARTMAN
Football 1, 2.

Such a bulld and "wotta man"!
When he says "I can"—he can.

RAYMOND HARVEY

He gets "ones" in Hartley's room;
Life in an office is his doom.

VIRGINIA HAY

Glee Club 1, 2; Orchestra 1; Declamatory 2.

Quiet and winning in her sweet way,
A charming wife she'll be some day.

MAURINE HEDLUND

Girls' Science Club 2, 3.

Name your sport—and she'll excel.
None so hard—but she does it well.

JOHN HENDERSON

Hockey 2, 3; Boys' Science Club 2, 3; Hi-Y 2, 3.

Worthy of respect is he;
He'll be a success, just wait and see.

Commercial

WESLEY HERRALD

Bumble "B" 1; Tennis 1; B. H. S. Players 2, 3;
Boys' Science Club 2, 3, President 3; Hi-Y 2, 3, Cab-
inet 2, 3, Treasurer 3; Social Science Club 1, 2, 3.

To judge by Wesley's family tree,
His future lies in pharmacy.

Scientific

BARBARA HINRICHS

Bumble "B" 3; Declamatory 3; B. H. S. Players 3;
Commercial Club 2, 3.

Her intellect and charming speech
Will warrant her a place to teach.

Commercial

GLENN HINSHELT

Football 1, 2; Basket-ball 2, 3; Class Track 2; Base-
ball 2.

A tall, dark lad—but not mysterious,
Who has brain power and can be serious.

Scientific

LILLIAN HOLLOMAN

Glee Club 1, 2, 3; Masque and Buskin 3; Social
Science Club 2, 3; "A Glimpse of Stephen Foster".

Quiet gal, or is she shy?
Seeing her, one wonders why.

Social Science

JENNIE HOLMES

Basket-ball 1; Debate 1; Declamatory 2, 3; Masque
and Buskin 3; Commercial Club 2, 3.

Her name suggests a lovely home,
And o'er the world she's sure to roam.

Commercial

JOLINE HOSTLER

Commercial

Glee Club 1, 2, 3; Social Science Club 3; Bonita Club 1, 2, 3; Life Guard 1, 2, 3.

Impish eyes, a lilting grin.
Despises school—is that a sin?

HOWARD HUBBY

Commercial

If by his name we prophesy,
He'll be a husband by and by.

WILBUR HUGHES

Commercial

Keep this in your mind, foremost and main:
"If at first you don't make it, try again."

CAROLYNE HULL

Commercial

For her we see a married life
Of happiness devoid of strife.

MARION HUNTER

Commercial

Volleyball 1; Student Council 1, 2.

The "swellest" gal in this whole town,
In business she will "mow 'em down".

INA ISAKSON Language, Scientific, Commercial

Senior Class Secretary; Bumble "B" 2, 3; Volleyball 1, 2; Basket-ball 2; Handball 2; Glee Club 1, 2, 3; Declamatory 2, 3; B. H. S. Players 1, 2, 3; "A Glimpse of Stephen Foster"; Social Science Club 2, 3; Vice President 3; Commercial Club 2, 3; Quill and Scroll 3; Student Librarian.

A dependable girl, and brilliant too,
Nothing will be too good for you.

KENNETH JENNINGS

Language, Scientific, Social Science

Junior Class Secretary; HI-Y 3.

The smartest guy for miles around,
And in the "lab" he will be found.

ELLEN JOHNSON

Scientific

'Tis true that she is much inclined
To stop and talk with all mankind.

CAROLYN KEMMERER

Social Science

Glee Club 1, 2, 3; Social Science Club 3.

Serene and calm through thick and thin,
But in the end we know she'll win.

MARY KENNEDY

Arts and Crafts

We commend her for ambition and work;
We're sure that her duty she'll never shirk.

LOTTIE KESTER

Commercial

Social Science Club 2, 3.

Easy-going—tries to please;
She'll float through life with the greatest ease.

HELEN KIRKWOOD

Language

Volleyball; Basket-ball; Orchestra 1, 2, 3; B. H. S. Players; "A Glimpse of Treasure Island"; Social Science Club 3; Student Council 3.

At first you think this girl is quiet.
But know her well and she'll belie it.

LENORE KRUSE

Commercial

Bumble "B" 3; Glee Club 1, 2, 3; Girls' Octette; Orchestra 3; B. H. S. Players 3; "A Glimpse of Stephen Foster"; "The Bells of Christmas"; Social Science Club 3; Commercial Club 3; Band 1, 2, 3; Student Council 3.

A business girl she's bound to be
With wit and personality.

CHARLES LAINSON

Scientific

Scrollette Kodakster 3; Hockey 2, 3; Tennis 2; Debate 2; HI-Y 2, 3.

A famous photographer in the making;
His ways are really very taking.

CHARLES LARSON

Scientific

Gather learning while you may;
You'll have use for it some day.

MIRIAM LAWSON

Language

Scrollette Senior Editor 3; Life Guard 1, 2, 3; Swimming Exhibition; Glee Club 2, 3; Volleyball 2; Basket-ball 1, 2; Handball 2; Masque and Buskin 1, 2, 3; Girls' Science Club 2, 3; "Tea Toper Tavern"; "A Glimpse of Stephen Foster"; "Let Who Will Be Clever"; Social Science Club 2, 3; Bonita Club 1.

Her wit is something to engage;
Her motto, "All the world's a stage".

EARL LINDEMAN

Arts and Crafts

Student Council 1; Interclass Basket-ball; Glee Club 1.

Gay, gregarious, gifted, gallant
'Tis said he has a hidden talent.

MARVIN LINDMARK

Commercial

Senior Class Vice President; Football Manager 2, 3; Tennis 2, 3; Glee Club 1, 2, 3; Orchestra 1; B. H. S. Players 1, 2, 3; HI-Y 2, 3; President 3; Social Science Club 3; Commercial Club 2, 3; Band 1; Student Council 2; Business Manager 3.

He likes to write—he likes to pun;
"Marv" believes you can't beat fun.

WILLIAM LINDMARK

Scientific

Sophomore Class President; B. H. S. Players 1, 2, 3; Science Club 2, 3; President 3; HI-Y 2, 3; President 2; Secretary 3; Social Science Club 2, 3; Student Council 1, 2, 3.

He likes to think—he likes to smile;
"Bill" has trouble beat a mile.

NAOMI LONG

Scientific

Bumble "B" 2, 3; Basket-ball 1, 2; Volleyball 1, 2; Debate 3; Declamatory 2; B. H. S. Players 2, 3; Girls' Science Club 2, 3.

As a seller of ads, she'll be a "wow",
And always come out on top, somehow.

WILLIAM LUCAS

Scientific

Inter-Mural Swimming 1, 2, 3.

Full of tricks and don't we know it!
Maybe someday he'll outgrow it.



PAUL LUCAS Social Science

Class Track 1; Glee Club 1, 2, 3; Orchestra 1, 2, 3; Hi-Y 2, 3.

A future Rubinoff he'll be.
"Maestro" fits him to a "T".

JUNE LUNDSTROM Commercial

Bumble "B" 3; Social Science Club 3.

If silence is golden then this girl is rich.
A wife or a worker? We cannot tell which.

MERLE MAXHEIM Scientific

Bumble "B" 2, 3; Business Manager 3; Declamatory 2; B. H. S. Players 2, 3; "And Let Who Will be Clever"; Girls' Science Club 2, 3; Social Science Club 2, 3; Glee and Scroll 2, 3; Vice President 3.

With endless wit and gracious ease,
She couldn't miss—she's bound to please.

NADINE McALLISTER Commercial

Bumble "B" 1, 2, 3; Basket-ball 1, 2; Volleyball 1, 2; B. H. S. Players 3; Commercial Club 1, 2, 3; President 3; Student Council 1, 2, 3; Vice President 3; Life Guard 1, 2, 3; Yell Leader 2, 3.

"Pep" seems to be her middle name:
In hunting (man) she'll win her fame.

MARGARET McALPINE Commercial

Basket-ball 1, 2; Volleyball 2.

With lots of "pep" and vigor and vim,
She'll make a wife so neat and trim.

THOMAS McCASKEY Scientific

Interclub Basketball 1, 2; Wrestling 2; Golf 1, 2; Boys' Science Club 2, 3; Vice President 3.

To hear him pun would make you mute;
But really—Tommy's awfully cute.

HELEN MENZIES Commercial

Glee Club 1; Orchestra 1; Commercial Club 2, 3.

Small and mighty—T. N. T.
Full of life and liberty.

HOWARD MEYERS Scientific

Football 2, 3; Life Guard 3; Hockey 1, 2; Boys' Science Club 3; Hi-Y 2, 3; Student Council 2.

The wonder boy—infrequent dater;
Women shy, or woman hater?

RAYMOND MEYERS Commercial

In his father's footsteps, a copper on the beat;
In apprehending criminals he'll never see defeat.

ROBERT MILES Commercial

Masque and Buskin 1, 2, 3; "A Glimpse of Stephen Foster"; Social Science Club 2, 3; Commercial Club 1, 2, 3; Treasurer 2; Vice President 3.

The object of the women's wiles,
He'll get the gals for Miles and Miles.

BERNADINE MILLER Commercial

Volleyball 1, 2, 3; Glee Club 1, 2, 3; Student Council 1, 2, 3.

Gum or a tune supply each pause of chat
With dancing, laughing, ogling, and all that.

MARY JAYNE NEELEY

Commercial

Stenography is down her way;
Or maybe "honor and obey".

RICHARD NELSON

Social Science

A new boy we don't know much about,
Who may some day raise a hue and shout.

MARY NORTH

Social Science

An artist's hand, an artist's mind,
We're sure she'll benefit mankind.

ERROL OLSON

Scientific

Swimming Exhibition; Boys' Science Club 3; Social Science Club 2, 3.

Serious—yet funny too;
Marriage is the life for you.

BETTY PARRISH

Social Science

Social Science Club 3; Student Council 2.

Her smile is something to alarm;
She has that which we call charm.

GERALD PARRISH

Social Science

Junior Class President; Wrestling; Interclass Basketball; Student Council 2.

A friendly manner and a brain supreme,
He'll originate a political scheme.

JEROME PEARSON

Scientific

Social Science Club 3.

You will drink from fortune's cup,
A famous chemist, coming up.

WILLIAM PETERS

Scientific

Bumble "B" 1; Interclass Basketball; B. H. S. Players 1, 2, 3; Hi-Y 1, 2.

Full of pranks and full of—well
One can't be perfect—strange to tell.

EVA PHIPPS

Scientific

Basket-ball 1, 2; Declamatory 3; B. H. S. Players 1, 2, 3; Girls' Science Club 2, 3; Social Science Club 3.

With many men—she is the star;
In married life she will go far.

VELMA PHIPPS

Arts and Crafts

Quiet, pleasant, a little shy,
Whatever she does, it's do or die.

WILLIAM POLLARD

Arts and Crafts

Sophomore Class Secretary; Orchestra 1, 2; Band 1, 2.

Abounding in wit and friendliness,
With these traits, he should progress.

MAYE PRICE

Commercial

Glee Club 1; Orchestra 1; Commercial Club 2.

Good-nature is her middle name,
She'll always think life is a game.

ALICE PRITCHARD

Social Science

B. H. S. Players 2, 3; Girls' Science Club 2, 3, Secretary and Treasurer 3.

Those lovely eyes, that pleasant smile!
To know this girl is worth your while.

KENNETH RASMUS

Scientific

Boys' Science Club 2, 3.

A quiet boy who is very sincere,
And holds his responsibilities dear.

WILLIAM REED

Scientific

Basket-ball Manager 2; Football Manager 3; Glee Club 1; Student Council 1, 2, 3.

The little man of iron cast,
He'll have fame that's bound to last.

VERA RICHARDS

Commercial

Social Science Club 2, 3.

She'll be famous in her day—
A female Einstein, one might say.

PAULA ROBERTS

Social Science

Glee Club 3; Social Science Club 3.

An artist's eye—a friendly heart;
Another girl involved with art.

ELLEN ROBERTSON

Commercial

Glee Club 1; Masque and Buskin 3; Commercial Club 3.

A dimpled chin, and soulful eyes;
Sophisticate, or otherwise?

MILDRED ROSENGREEN

Commercial

Student Council 3.

With a smile that pleases, and industry,
A private secretary she will be.

HAROLD ROSS

Social Science

Band 1, 2, 3.

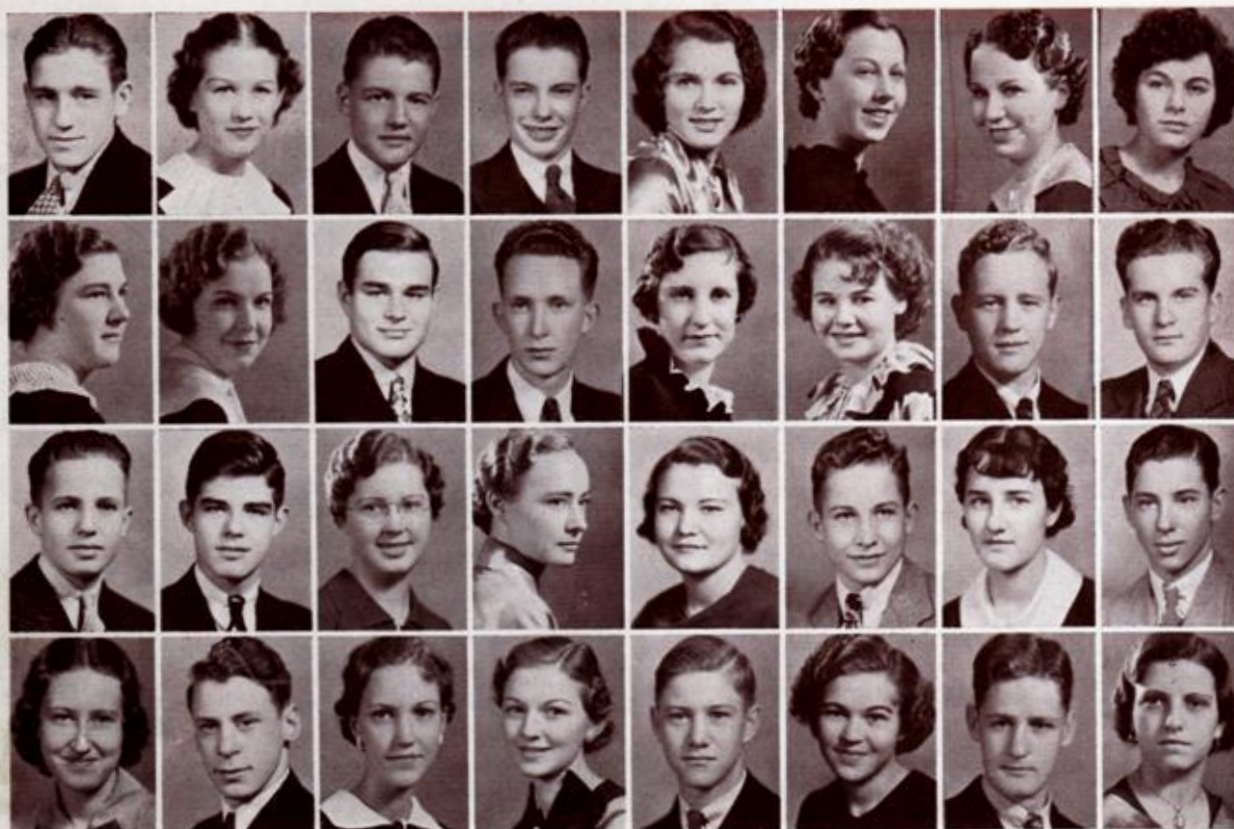
A mighty boxer, sure to win,
This guy can take it on the chin.

RUTH ROSS

Commercial

Glee Club 3; B. H. S. Players 2, 3; "The Bells of Christmas"; Social Science Club 3; Commercial Club 3.

Never taking—ever giving,
She'll model clothes and make a living.



WILLIAM ROSS Scientific
Wrestling 2; Interclass Basket-ball 1; Bonita Club 1.
His swimming is the best—and yet
You couldn't call this boy "all wet".

ALICE RUNYON Commercial
Bumble "B" 1, 2, 3; Volleyball; Glee Club 1, 2;
Declamatory 1; B. H. S. Players 1, 2, 3; "Tea Toper
Tavern"; "Luncheon for Six"; Social Science Club
3; Commercial Club 3; Student Council 1, 2, 3, Sec-
retary 1; Quill and Scroll 2, 3.
You have lots of talent; as an actress you'll be
grand.
You'll have loads of money and be known o'er
all the land.

JERRY RUSHMEYER Scientific
Glee Club 1, 2; Hi-Y 2, 3.
His future centers 'round a comb;
A beauty shop will be his home.

CLIFFORD RUSSELL Scientific
Glee Club 2; Mixed Chorus 2; Social Science Club 3.
Silent, smart, supposed shark;
Such studying seems simply stark.

VIRGINIA SCHROEDER Social Science
Volleyball 2; Basket-ball 2; Masque and Buskin 3;
Social Science Club 2, 3.
Sweet in looks and disposition,
Virginia will grace most any position.

CRYSTAL SHAW Commercial
Bumble "B" 2, 3; Glee Club 1, 2, 3; Masque and
Buskin 2, 3; "A Glimpse of Stephen Foster".
She snags the guys, and gets the gals
Whose men she steals to be her pals.

ELEANOR SHAW Commercial
Bumble "B" 1, 2, 3; Glee Club 1, 2, 3; Girls Octette
2; Mixed Chorus 2; Declamatory 1, 2, 3; Masque
and Buskin 1, 2, 3; "Keeping Kitty's Dates"; "A
Glimpse of Stephen Foster"; "Thanksgiving in Early
Boston"; "And Let Who Will be Clever"; "Millions
in Saved Sales"; Social Science Club 1, 2, 3; Com-
mercial Club 1, 2, 3; Student Council 1, 2; Quill
and Scroll 2, 3.
Eleanor Shaw

Pretty, witty, popular plus!
Among the males, she'll create a fuss.

BEVERLY SHRIVER Commercial
Glee Club 1, 2, 3; Girls' Octette 3; Commercial Club
2, 3.

A lovely voice, a pretty face,
On stage or screen, she'll find a place.

Gwen Simmons
GUINEVERE SIMMONS Scientific
Scrollette 3; Orchestra 2; Declamatory 1, 2;
Masque and Buskin 2, 3; Girls' Science Club 2;
"Hot Copy"; Band 1, 2, 3.

A queenly name—a queenly gal,
Will she have a prince to be her pal?

NAOMI SINN Commercial
Commercial Club 3.

She'll be a business girl or burst.
(If she doesn't marry first.)

Art Smith
ART SMITH Scientific
Wrestling 1; Football 1, 2, 3; Basket-ball 1; Glee Club
1; Masque and Buskin 1, 2, 3; Science Club 1, 2, 3;
"Hot Copy"; "Let Who Will be Clever"; "A Glimpse
of Stephen Foster"; "Lesson in Greek History";
Hi-Y 3; Social Science Club 2, 3; Student Council
1, 2; Bonita Club 1.

His future's uncertain (and so is his past).
He's a swell guy at present—we hope it will last.

JOHN SMITH

Social Science

Wit falleth from his lips like pearls
He loves to love the lovely girls.

VIRGINIA SMITH

Social Science

Now little Smith girl—don't you cry;
You'll have a new name by and by.

VOINE SMITH

Commercial

Glee Club 2, 3; "A Glimpse of Stephen Foster".

This Voine—a pretty girl is she
With plenty of originality.

CARL SPONG

Scientific

Football 1, 2, 3; Glee Club 1, 2, 3; Declamatory 2, 3; Masque and Buskin 2, 3; Science Club 2, 3; "A Glimpse of Stephen Foster"; Hi-Y 2, 3.

He's not in the rank and file;
He's "different"; and what a smile!

CLARENCE SNEDDEN

Commercial

Glee Club 1; Student Council 3.

A strong and silent man himself
You'll never find him on the shelf.

GUY SNYDER

Social Science

Interclass Basket-ball 1, 2; Kittenball 1, 2; Baseball 2.

That friendly smile will be an aid
To gain the place that for you is made.

DONALD STANDLEY

Scientific

Football 1, 3; Basket-ball 2; Glee Club 1, 2, 3; Boys' Science Club 2, 3; Hi-Y 2, 3; Student Council 1.

A football hero—rah! rah! rah!
Makes the gals go tra la la!

FRANCES STURTZ

Commercial

Masque and Buskin; Commercial Club; Student Council.

When you know her, you'll report,
"Lots of fun, and one good sport".

NAOMI SUTHERN

Language

Scrollette 2, 3; Editor 3; Glee Club 1, 2, 3; Declamatory 1; Masque and Buskin 3; "A Glimpse of Stephen Foster"; "The Bells of Christmas"; Quill and Scroll 2, 3.

Talent, brains, and clever, too;
There isn't much this girl can't do.

EDITH SUTTON

Scientific

Glee Club 1, 2, 3; Masque and Buskin 1, 2, 3; "A Glimpse of Stephen Foster"; "Thanksgiving in Early Boston"; "The Bells of Christmas"; Girls' Science Club 1, 2, 3; Social Science Club 2, 3.

She has jollity to lend;
Through thick and thin she'll be a friend.

JACK SWANDER

Scientific

Bumble "B" 1, 2; Debate 1, 2, 3; Declamatory 2; B. H. S. Players 3; Boys' Science Club 2, 3; Secretary 2, President 3; "The Bells of Christmas"; "A Glimpse of Treasure Island"; Hi-Y 2, 3; Social Science Club 2, 3; Life Guard 3.

Jacky has ambition beneath those golden curls,
He's gonna be a doctor—so watch your liver girls!

EVELYN THOMAS

Language

Orchestra 1, 2, 3; Social Science Club 3.

A quiet girl—and yet we know
She has a violin and beau.

LYLE THOMAS

Scientific

Orchestra 1; Social Science Club 3; Band 1, 2.

"A jolly good fellow", with a dash,
Sometimes he's cautious—sometimes, rash.

MARY ELLEN THOMPSON

Commercial

Social Science Club 3.

A dependable girl with a host of friends,
Seems serious at first, but soon makes amends.

RICHARD THOMPSON

Scientific

Bumble "B" 1, 2, 3; Debate 1, 2; Masque and Buskin 1, 2, 3; Boys' Science Club 2, 3; "Thus Glory Passes"; Hi-Y 2, 3; Social Science Club 3, President 3; Band 3; Student Council 3; Quill and Scroll 3; "Thanksgiving in Early Boston".

Though he's quite fresh, and his tricks are old,
He is very likeable, we're told.

JUNE TILLSON

Language

Bumble "B" 2, 3; B. H. S. Players 3; Girls' Science Club 3; "The Bells of Christmas"; "A Glimpse of Treasure Island"; Social Science Club 2, 3; Quill and Scroll 2, 3.

A budding journalist is she;
A brilliant future we foresee.

MARY TILLSON

Scientific

Junior Class Vice President; Glee Club 1, 2, 3; Masque and Buskin 1, 2, 3, President 3; "Weiners on Wednesday"; "Thanksgiving in Early Boston"; "A Glimpse of Stephen Foster"; "The Bells of Christmas"; "Millions in Saved Soles"; Science Club 1, 2, 3; Social Science Club 3; Student Council 2.

"A Miracle!" the seer quoth,
"Liked by kids and teachers both."

CARL THORNGREN

Scientific

Boys' Science Club 1, 2, 3; Hi-Y 3; Band 1.

A carpenter whom none can mock;
A chip from the paternal block.

BETTY TOEPFER

Commercial

A social worker, to be sure,
Feeding and clothing all the poor.

ROBERT UPDEGRAFF

Scientific

Scrollette 3; Golf; Orchestra 1, 2; Debate 2; Masque and Buskin 1, 2, 3; Boys' Science Club 2; "And Let Who Will be Clever"; "Thanksgiving in Early Boston"; "A Glimpse of Stephen Foster"; Hi-Y 2; Band 1, 2, 3; Student Council 2.

In medicine his future lies,
He's going to specialize in eyes.

MARGARET VEALE

Language

Glee Club 1, 2, 3; Girls' Octette 3; Mixed Chorus 2; Masque and Buskin 3; Orchestra 1, 2, 3; "A Glimpse of Stephen Foster"; "The Bells of Christmas"; Social Science Club 3; Student Council 3.

If you want brains or song or zeal,
Take our advice and page Miss Veale.



HOWARD WALDMAN

Commercial

Commercial Club 2, 3.

Howard Waldman
 If you wed your name is mud
 A hen-pecked husband 'n the bud.

LUCILLE WATKINS

Social Science

Basket-ball 1, 2; Kittenball 1, 2; Volleyball 1, 2;
 Debate 1; Girls' Science Club 2; Social Science Club
 3; Student Council 1, 2.

A gentle soul whose one desire
 Will be to replenish the old home fire.

WILLIS WATKINS

Scientific

Football 1, 2, 3; Basket-ball 1, 2, 3.

Willis Watkins
 A clown at heart and lots of fun,
 A football star—one reason we won.

MARGARET WEAVER

Commercial

Glee Club 1; Declamatory 3; Student Council 1.

Kindness is a worthy trait;
 With her it seems to be innate.

JOHN WEBER

Scientific

Football 3.

If we can judge from what you say,
 You'll be a racketeer some day.

DORIS WHEELER

Commercial

Social Science Club 3; Commercial Club 2, 3, Sec-
 retary 3; Student Council 2.

She and stenography agree;
 Polish to the 'nth degree.

CATHERINE WHITE

Commercial

Commercial Club 2, 3; Scrollette Typist 3.

Nirable fingers and office technique
 Should give her any job she'll seek.

RAYMOND WICKMAN

Commercial

Football 1, 2; Basket-ball 1; Glee Club 1.

His connections with school he'll gladly sever;
 At playing hookey he's quite clever.

KENNETH WIRTZ

Agriculture

Wrestling 2; Glee Club 1, 2, 3; Band 2, 3.

A willing lad—a spade he wields;
 He will surely till the fields.

DARREL YOUNG

Commercial

Hi-Y 1; Band 1.

Small and mighty and full of pranks;
 He's doing very nicely, thanks.

PAUL YOUNGGREN

That he'll have fun is no idle rumor;
 There's nothing like a sense of humor.

A thankful sigh, a tearful eye,
 Which e'er the case may be,
 Marks the ending of the year
 Pro tempus, we are free.

Within this year have been events
 Remembered and forgot;
 Within this book they have been writ
 And they are quite a lot.

And so, though faults are far from few,
 We've gathered sundry views.
 And errors, brevity and such
 We hope you will excuse.

CLASS WILL

KNOW all men by these presents that we, the senior class of Boone High School, do make and publish this, our last will and testament, hereby revoking all former wills by us at any time heretofore made.

And as to our worldly estate and all the property, real, personal, or mixed of which we shall graduate seized and possessed, or to which we shall be entitled at the time of our Commencement, we devise, bequeath, and dispose thereof in the manner following, to-wit:

First: To our beloved teachers we give, devise, and bequeath, in addition to the jangled nerves, white hairs, and shattered morales donated during our past lives, several relieved sighs.

Item. To Mr. Crouthamel the seniors gleefully unite to leave sundry worn-out text books, chemistry manuals, etc., to be utilized to keep the school fire burning. (Is that a dissenting voice from the school board?)

Second: We, in a spiritual and reverential mood of benevolence, do give, bequeath, and devise to our successors, the following heritage which they will sorely need in trials to come, viz:

Item. To Alexander George Washington himself is fondly bequeathed an eye for baskets, hitherto in the possession of Bud Watkins.

Item. Several jilted males are left to all junior claimants by Vonis Christian-son, as she can no longer use them.

Item. John Allender leaves his supreme ability to roll sevens to George Buechler.

Item. Art Smith, the great lover, gives his technique along that line to Mike Enich, who seems to be neglecting that phase of his education.

Item. Eleanor Shaw sheds her gab-ability upon Mary Martha Stump.

Item. Because Billy Peters feels he can no longer use his noisiness, wisecracks, and general disobedience he regretfully leaves them to J. Reynoldson.

Item. Paul Lucas, upon hearing that Tom Smith got as far as "Turkey in the Straw" on the violin, decided to leave him a particle of his own talent.

Item. Paula Roberts of the benevolent and philosophical nature, feeling that when a boy wants a nose badly enough to bite for it, he should have it, bequeaths hers to Norman Erbe.

Item. Feeling that a certain amount of modesty would be very beneficial to Rex Grayson, Jerome Pearson has been persuaded to donate some of his own brand to the cause.

In whereof, we the senior class have to this, our will, set our hand and seal, this fifteenth day of May, A. D., one thousand nine hundred and thirty-six.

Class of '36.

Signed, sealed, published, and declared in the presence of us who have hereunto subscribed our names as witnessess thereto, in the presence of the said testator, and of each other.

Witnesses:

I. D. Tectum

Pross E. Cute



FIRST SEMESTER STUDENT COUNCIL



SECOND SEMESTER STUDENT COUNCIL



Back row: Lawson, Lainson, Simmons, Updegraff, Richmond, Fry, Bloomfield, Southern.

Front row: White, Stephens, Cruikshank, Burke.

SCROLLETTE STAFF

Editor-in-chief	Naomi Southern
Assistant editor	Maxine Stephens
Business manager	Jean Burke
Junior business manager	Juanita Richmond
Senior editors	Jean Fry, Miriam Lawson
Organizations	Guinevere Simmons
Calendar	Emily Cruikshank
Humor	Richard Bloomfield
Athletics and Humor	Robert Updegraff
Kodakster	Charles Lainson
Typist	Catherine White
Advisers	Zoe Stevens, Doris Shaler, William Hartley



BUMBLE "B" STAFF

News Editor	Louise Anderson
Associate Editor	Bette Fick
Advertising Manager	Merle Maxheim
Copy Editors	Helen Behling, June Tillson
Feature Writers	Eleanor Shaw, Alyce Runyan, John Henderson, Annabel Pepper
Sports Writers	Dick Thompson, Kurt Heaton, Junior Savereid, Norman Erbe
Reporters	June Witt, Edith Gunn, Mary Ann Zeigler, Glee Barth, Virginia Vail, Ina Isakson, John Lindell, Dwight Morrison, Evelyn Debner, Marjory Carlson, Helen Palmer, Marcia Peterson, Pauline Mueller, Emma Holmes, Marybelle Mason, Angeline Poulos, Jayne Pestotnik, Naomi Wallace, Mary Stump
Advertising Contracts	Marguerite Fitzsimmons
Advertising Solicitors	Naomi Long, Paul Thorngren, William Updegraff, Joe Wells, Barbara Hinrichs, Betty Rittenhour, Eleanor Sparks, Frances O'Connell, Genevieve Wilson.
Collectors	Bobby Brown, Clarence Rice, Clark Nelson, Robert Whittlesey, Frank Linderblood.
Typists	Lois Wilson, Mildred Olander
Advisers	Miss Dagmar Hansen, Mr Karl P. Longnecker

Honor has come to our school through two members of the Bumble "B" staff, namely, Merle Maxheim and Annabel Pepper, who received national recognition for their entries in a Quill and Scroll contest.



QUILL AND SCROLL

First Semester	Officers	Second Semester
Dwight Morrison	President	Bette Fick
Eleanor Shaw	Vice President	Merle Maxheim
Bette Fick	Secretary	Junior Savereid
Miss D. Hansen	Adviser	Miss D. Hansen

THE Lorena Ericson chapter of the Quill and Scroll, a National Journalistic Society, has spent a pleasant year studying authors, playwrights, poets, actors, and book reviews.

Margaret Sangster's poem "The Soul of Lillie Sing," a story of a young Japanese girl, was read and enjoyed. The lives and works of two of our greatest playwrights, Noel Coward and Eugene O'Neill, were reviewed. Book reviews, especially those from the Des Moines Register, were read and discussed. The life and a few of the adventures of Richard Halliburton, the author and traveler, were interestingly presented; and a splendid talk was given on the youthful escapades of our most beloved actor and comedian, the late Will Rogers. Those who attended the Press Convention gave an interesting resume of the happenings.

At the end of the first semester the club held a scavenger hunt as a climax to the initiation of the following members from the Bumble "B" staff: Marguerite Fitzimmons, Frances O'Connell, Virginia Vail, Ina Isakson, Paul Thorngren, Edith Gunn, Junior Savereid, Richard Thompson, Evelyn Debner.

In May there is always a banquet or a party preceding the initiation of pledges from Bumble "B" and "The Scrollette" staffs. The members taken in this spring were: Jean Burke, Juanita Richmond, Maxine Stephens, Jean Fry, Miriam Lawson, Emily Cruikshank, Robert Updegraff, Richard Bloomfield, Guinevere Simmons from "The Scrollette".

Membership in this organization is an honor coveted by many high school students, but it is attained only by those who are in the upper third of their class scholastically, and who have done superior work in some phase of journalism.



BOONE HIGH BAND

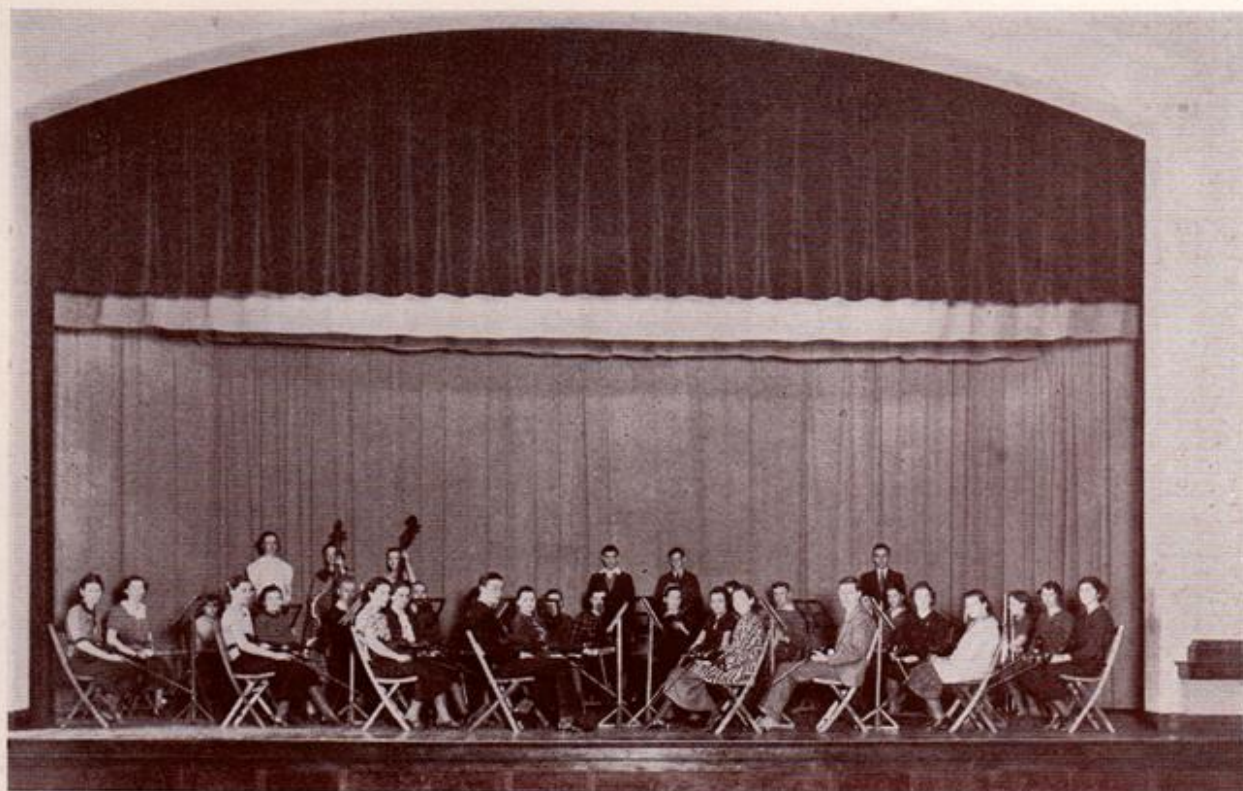
Max Corrick	Student Director
Eugene Lindbloom	Secretary
Paul Thorngren	Librarian
Lenore Kruse	Wardrobe Mistress

THE Senior High School Band, composed of fifty members under the direction of Mr. N. A. Fields, has had an active and successful year's work.

Realizing the importance of a snappy appearance, the band has learned many intricate marching drills and formations. Drum majors, Paul Younggren, Bruce Corl, and Harold Flannery, may be commended for having successfully mastered the difficult art of baton twirling. The band had a good opportunity to display its ability before the football fans, and was called upon, also, to provide music for the basket-ball games. Due to the lack of room in the gym, the following thirty-five are those chosen as the personnel of the band: Clayton Lander, Paul Thorngren, Don DeFrance, John Shadle, Byron Davis, Clarence Rice, Lenore Kruse, Harry Jorgensen, Joyce Breedlove, Douglas Sayre, Frank Hagen, Junior Munson, Kenneth Wirtz, Gwinevere Simmons, Harold Fairchild, Robert Paulson, Charles Gibson, John Karns, Harold Ross, Bill Chance, William Butler, William Updegraff, Thomas Dahlgren, Max Corrick, Gavin Holloman, Eugene Lindbloom, Leo Eiserman, Robert Dennert, Darrell Hansen, Edgar Updegraff, Marion Parks, Gertrude Nygren, Robert Updegraff, Jayne Pestotnik, Lowell Cutler.

The Boone High Band united with other high school bands throughout Boone County to play four selections at the annual County Musical Festival in the spring.

An unusual number of new members denoted a growing interest in this organization which deserves the enthusiastic support of the student body.



BOONE HIGH ORCHESTRA

First Semester	Officers	Second Semester
Ina Mae Zimbelman . . .	Student Director . . .	Max Corrick
Jayne Pestotnik . . .	Secretary . . .	Paul Lucas
Joyce Breedlove . . .	Librarian . . .	Joyce Breedlove

THE 1935-36 orchestra, under the direction of Mr. N. A. Fields, is undoubtedly the best in the history of the school. The members, totalling fifty, have taken an active interest in their work, and, for the first time, have attempted truly difficult selections. However, the orchestra is severely handicapped by lack of variety in instrumentation. The High School P. T. A. has done what it could to relieve this situation by sponsoring the "Rufus Rose Marionette Show", the proceeds from which were given to the music department to use in buying new instruments.

Besides playing for all the evening entertainments put on at the high school, the orchestra played a selection at the Spring Festival of the Boone Woman's Club, and also entered the state music contest.

In the sub-district contest at Jefferson, Betty Likely, piano soloist; Jane Mauck, contralto soloist; and Evelyn Thomas, violin soloist, were all rated superior. These contestants competed in the district contest at Mason City, April 16-18, where Evelyn Thomas was rated excellent. The string quartet, composed of Ina Mae Zimbelman, Evelyn Thomas, Paul Lucas, and Robert Whittlesey; the clarinet quartet, composed of Harry Jorgenson, Byron Davis, Clarence Rice, and Clayton Lander; and the entire orchestra playing its first symphonic arrangement, Beethoven's "First Symphony", were allowed to go to Mason City without competing in the sub-district contest. There, the string quartet rated excellent; girls' sextette, excellent; and the orchestra received first place among class A schools, thus proving that Ames is not always unconquerable. Since the state contest was not held until May 1-2, the final rating of the Boone High orchestra was undetermined when this book went to press.

All in all, the year has been one in which many fine things have been accomplished and we hope that Mr. Fields will conduct an equally successful orchestra during the coming year.



GLEE CLUBS

BOONE High School is fortunate in having three glee clubs, two for girls and one for boys.

The First Girls' Glee Club, under the direction of Miss Helen Sievers, is composed of upper class girls who have had previous glee club experience. This year the club has made several public appearances. On two occasions it sang before the High School P. T. A. and was enthusiastically received. It provided the musical background for two of the radio plays presented by the dramatic clubs, "A Glimpse of Stephen Foster" and "The Bells of Christmas". This club also has sung for a school assembly and for the Boone Woman's Club. A good attitude has been evinced this year and the talent has been of unusual quality. Gretchen Sparks has been the competent and faithful accompanist.

The Second Girls' Glee Club, composed mostly of sophomores, spends one year preparing to enter the First Glee Club. This club has sung in public once this year—before the Boone Woman's Club. The accompanist for this group is Jayne Pestotnik; the director is Miss Sievers.

The Boys' Glee Club, under the direction of Mr. N. A. Fields and accompanied by Mary Jo Bostwick and Betty Likely, has appeared in public only twice. Both appearances were in connection with the play "A Glimpse of Stephen Foster"; one was before the Boone Woman's Club and the other before a school assembly.

Various choruses, quartets and so forth are formed from both the girls' and boys' clubs. Members from both clubs participated in the annual County Music Festival held in April.

Jane Mauck won a superior rating for her contralto solo in the sub-district music contest at Jefferson and competed in the district contest at Mason City. A girls' sextette (Miss Sievers' pride and joy), composed of Margaret Veale, Naomi Suthern, Bernice McVicker, Evelyn Nordstrom, Kathryn Anderson, and Enid Breedlove, also competed at Mason City where they rated excellent.



Second row: Thorngren, Savereid, Swander, Linderblood.

Front row: Sayre, Long, Dodge, Douglas, Hodgson.

DEBATE

*M*R. Lyle Quinn, during the past year, has coached an excellent debate team. This year sixty-nine interscholastic debates were engaged in, thirty-four of which were nondecision. Of the remaining thirty-five, Boone debaters won twenty-three and lost twelve.

The first team was composed of Paul Thorngren, Frank Linderblood, Junior Savereid, and Jack Swander; only one of whom, Jack Swander, will be lost by graduation. On the second teams were: Loran Taylor, Dubois Johnson, Louise Sayre, Agnes Hodgson, Margaret Douglas, Avis Dodge, Naomi Long, Dorothy Meyers, and Frances Smith. In addition, there was a large group of students who mastered the principles of debate and engaged only in debates among themselves.

In the district debate contest, in which twelve class A schools competed, the Boone High Debate Team was one of the three winners chosen to attend the state finals at Iowa City, March 27-28. There, where fourteen class A schools debated, Boone won five and lost three debates, tying with Davenport for fourth place.

The Boone team entered the fourteenth Annual McCahill Debate Tournament at Drake University, Des Moines, on March 6-7. Before losing to the Abraham Lincoln team of Council Bluffs, the winners of the tournament, Boone debaters defeated the national champion debate team, from Sioux Falls, South Dakota.

This spring fifty-two debaters of Boone High held a school contest, in which thirteen schools, each with two debate teams, were supposed to be represented. This tournament greatly stimulated interest in debate among the other pupils of B. H. S.

Mr. Quinn, who says that prospects are very bright for next year, expects to have a fine group of new debaters as well as the experienced students.



FOOTBALL

COACH ROBERTS

AMES has lost and Boone has won! No, not an athletic game, but Coach Roberts. In Iowa, Coach Roberts has a reputation for always producing splendid teams in football, golf, and basket-ball. To back such a statement, accurate statistics show that in the nine out of ten years of coaching at Ames his teams averaged 800 per cent. He also coached three Ames football conference winners within six years. His abilities extend into the fields of track and wrestling, since he has trained several nationally known individuals in both of these sports.

The close score which prevailed in the Boone versus Ames game again testified as to Coach Roberts' prowess in football tactics.

Yes, decidedly, Ames has lost!

FOOTBALL SEASON

Coach Roberts, assisted by Coaches Mau and Lamb, marshalled the Boone team through a satisfactory season which brought to the records of Boone High four victories, four defeats, and one tie.

The football season was an exciting one containing several hard fought victories, chief among them being the Boone-Oskaloosa, Boone-Ames, and Boone-Fort Dodge games.

A great deal of credit must be given to Mike Enich, back, who was placed on the first all-state team by Jack North and on the second team by the I. D. P. A. Credit goes also to Kenneth Anderson, tackle, and to the miniature back, Watkins, for their outstanding performance during the football season.

The season ended (accompanied by wintry weather and snow) on November 11, 1935 with Boone going down to defeat in a closely fought game with her age-old foe, Ames High School.

September 13	Boone 18	Eldora	0
September 20	Boone 0	Mason City	14
September 27	Boone 12	Webster City	0
October 4	Boone 25	Indianola	0
October 11	Boone 13	Oskaloosa	13
October 19	Boone 6	Marshalltown	0
October 25	Boone 0	Ft. Dodge	6
November 1	Boone 12	Newton	19
November 11	Boone 0	Ames	6



BASKET-BALL

COACH MAU

ATENTION! Did you know that we have an All-American in our midst? Yes sir, he is none other than our new, good-natured basket-ball coach, Mr. Mau. While attending the University of Iowa in 1927, he was placed on the American Track Team Honor Roll.

It was at Iowa University that Mr. Mau prepared for his life work—that of coaching. And well prepared he became, as shown by his fine records at Wayne, Nebraska, and Douglas, Wyoming. At Douglas his track team held four state records, and his basket-ball and football teams fitted well into the upper brackets. And remember, please, his successful first season at Boone.

So let us say warmly, "Welcome, Coach Mau!"

1935-36 BASKET-BALL SEASON

The Toreadors, wearing the traditional red and green emblem of Boone High School, swept through the basket-ball season nearly reaching the goal of the 1936 Conference champions—only to be defeated by that age old rival, Ames.

We all know it was not because of lack of courage or stamina that we lost the conference and district tournaments to Ames. Our players fought each game equipped with the qualities which form a real basket-ball team, losing only two conference games other than those to Ames.

Captain Case, a valuable player, was lost early in the season due to his graduation, leaving Watkins, Enich, and Brogden, supported by Grayson, Anderson, Clark, Hohenshelt, and Schroeder, to carry on with the basket-ball season. Because of their ability and inspired playing the following players were awarded these important honorary positions by the Iowa Daily Press Association: Watkins, forward, on the first team; on the second team, Enich, guard, and Brogden, Center.

Grayson and Watkins, having the highest percentage of successful free throws, won the local free throw award sponsored by the Junior Chamber of Commerce.

Coach Mau and his basket-ball squad completed a successful season by defeating the County All-Stars—31 to 29.



B. H. S. PLAYERS

First Semester	Officers	Second Semester
Joyce Breedlove	President	George Buechler
Bruce Corl	Vice President	Lois Wilson
Louise Anderson	Secretary and Treasurer	Bruce Corl
Miss Lloyd	Adviser	Miss Lloyd

DURING the past year, the Boone High Players have pursued the study of dramatics in several forms—outstanding actors, plays, and radio productions.

In the course of the year, three radio plays were presented at radio station WOI, Ames, Iowa. The three plays were: "A Glimpse of Treasure Island", "The Bells of Christmas", and "The Star Spangled Banner".

The first, "A Glimpse of Treasure Island", was as exciting as the title implies. A few of the adventures of those thrilling characters, Jim Hawkins and John Silver, were enacted.

The second, "The Bells of Christmas", is an old favorite, the touching story of two small boys for whom the silver bells rang out on Christmas Eve.

At the time of this publication, the club members had not yet given "Star Spangled Banner" nor had they decided on the name of their assembly play.

"And Let Who Will Be Clever", the public play presented by the B. H. S. Players and the Masque and Buskin combined, was coached by Miss Lloyd and Miss Harvey. Arabella Sykes, a little country cousin, upset the whole Griffith family with whom she came to live after the death of her grandmother. She brought about a financial crisis for Mr. Griffith and almost a nervous break-down for Linda, his wife; and she married a wealthy bachelor whom Carolyn, daughter of the household, had set out to capture. A Japanese houseboy, Fugi; Fanny, a dumb maid; Aunt Sophie, an over indulgent person; "Erp", a champion swimmer and count; and Maud, a modern polo-playing grandmother, all provided amusing situations in this excellent comedy. The following parts were taken by members of the B. H. S. Players: Wilbur Griffith, Lehman Lippert; Arabella, Joyce Breedlove; T. Bookington Wells, Gary Chambers; Erasmus Rockwell Pennington, Norman Erbe; Josephine, Merle Maxheim; Fugi, Bruce Corl; Fanny, Kathryn Anderson; Betty, Bette Fick.

The members of B. H. S. Players are looking forward to an equally fine program next year.



MASQUE and BUSKIN

First Semester	Officers	Second Semester
Mary Tillson	President	Dorothy Robertson
James Wilson	Vice President	Arlene Hiatt
Virginia Vale	Secretary and Treasurer	Maxine Stephens
Miss Eloise Harvey	Adviser	Miss Eloise Harvey

THE forty-two members of the Masque and Buskin Dramatic Club have enjoyed an interesting year of studying dramatists, plays and radio technique.

An unusual program was carried out. Three radio plays—"A Glimpse of Stephen Foster", "Thanksgiving Day in Early Boston", and "Thus Glory Passes"—were presented during the year over radio station WOI at Ames, Iowa. The sound effects and musical background, as well as the speaking parts, were taken by the students.

The first of these plays, "A Glimpse of Stephen Foster", re-enacted the important events in the life of Stephen Foster, a well-beloved American composer of southern melodies. A musical background provided by the girls' glee club proved very successful. This was presented as the annual assembly play and also for the Music Department of the "Boone Woman's Club". In both presentations it was given as it was at the WOI studio, with microphone, glee club, theme music, sound effects, and announcer.

The second, "Thanksgiving Day in Early Boston", was a play depicting the hard life of the early settlers. "Thus Glory Passes" was an old Greek story of a miser and his riches.

In the latter part of November, the Masque and Buskin and the B. H. S. Players combined their efforts to produce their annual public play, "And Let Who Will Be Clever", which was a smashing success. Seven Masque and Buskin members were cast as follows: Linda Griffith, Miriam Lawson; Carolyn Griffith, Arlene Hiatt; Aunt Sophie, Eleanor Shaw; Maude, Dorothy Robertson; Bud, Curtis Heaton; Chuck, James Wilson; Johnny, Don Berglund.

In connection with the ticket sale for the public play, the two clubs had a contest. The Masque and Buskin club was the loser, so its members presented for the B. H. S. Players an old fashioned melodrama, "The Fatal Necklace," which was much enjoyed as shown by the hilarious laughter throughout the performance.

Dramatic interest will surely be kept alive in the future through the work done by these two splendid clubs.

This page was originally set aside for the National Honor Society. The Scroll-ette Staff regrets that the awards were made too late this year to be included in this book.

* * * * *

March 23, 1936.

Dearest Sis: The whole town of Buffalo Licks would be startled if it could see me now. Because, you see, I'm a feature writer person now. It all started when Miss Brissaud, the adviser of our school annual, called me to her desk and fixed me with her glittering eye. "Jenny", she said, "you're a feature writer". Well, I was dumbfounded, but, with my usual resourcefulness, I came right back with: "Oh, yeah?" Of course I shouldn't have said it, but she forgave me. So now I must write a feature.

Love,

Jenny.

March 27, 1936.

Dear Sis: Things get worser and worser. I will now mount my respected type-writer and dash off a few spirited remarks. I am thinking, have thought, and am about "thunked out". Order of thoughts thought while thinking:

First thought:

J OHNSON—In Latin and physics our Maurice excels,
But in reading "Vergil", mistakes t's for l's.

U

N ETTLES—LaVonne has curly brown-red hair
And is known for giving guys "the air".

I

O 'CONNELL—Two boys at Frances' front door stood,
And pulled the door-knob right out of the wood.

R OBERTSON—A lovely "Pocahontas Dot" to Johnny Smith, her boy friend;
It seems to almost everyone that this romance will never end.

S AVEREID—Junior's a debater who is very fine,
And who hands the girls a convincing "line".

T HORNGREN—A little big-shot is our lordly Paul;
He debates very well and seems to know all.

U

D ORAN—Vern gives many speeches in class for Miss Lamb;
But by using large words gets himself in a jam.

E NICH—"Frenchman" Mike is a football hero
Who destroys teams—not towns, like Nero.

S MITH—Tom is the swellest guy in creation
(Though he does go in for "Dissipation").

P. S. I'm waxing poetic, you see:

I've tried to write a verse using Junior students' names,
But luck just doesn't come my way—no I's or U's of fame.
I've Stumps and Erbes and Richmonds and Sturtzes,
There are Joneses, Olanders, Thomases, and Wirtzes.
But no I's or U's.

FEATURE Continued on Page 42

MATCH 'EM

- 1. The one person from the north side that the south side can't do without at a party.
- 2. That gal with the "Come hither" sparkle in her eyes.
- 3. A girl that gloats over all the admiring glances directed to her from her classmates during a music contest.
- 4. The forerunner of the modern trend in male hairdress. (It was a howling success).
- 5. That cute little blonde who causes all the fluttering of hearts among the J. C. males—or maybe it's just one.
- 6. "M" as in men, "a" as in active, "x" as in the unknown quantity, "i" as in inane, "n" as in necessary, "e" as in effective.
- 7. A physique like a Grecian god, football technique like Red Grange, as bashful as a child in kindergarten—but oh, the man has charm!
- 8. Her quiet nature draws the entire populace from the noise and hub-bub of everyday life. She has talent for writing Bumble "B" articles and is usually followed by a group of friends.
- 9. "Handsome is as handsome does"—and we think handsome has done O. K. He has a nice voice, dark curly hair—and Janet Thompson.
-10. She's tall, slim, and very beautiful; she likes to dance and, from what I gather, she likes to spend a good deal of her time at the bedside of a certain somebody who happens to be ill just now.
-11. His wisecracks are known all over high school and he's rising rapidly in football, but somehow we wonder if his next move won't be to spell his name Smythe instead of Smith.
-12. He's tall, dark, and handsome—let's just call him our own Don Juan from the junior class.
-13. She drives a dark sedan, has a particularly keen eye for fellows—especially when she sees the poor things walking to school. (But that doesn't advance much competition).
-14. On the motorcycle he's a speed-demon. Off the motorcycle he is a demon with the women—or at least that's his aim.
-15. She's a wee bit silly, but always fun. She dances divinely, has a good disposition, and is the proud possessor of impish eyes.
-16. Our long lank centre in basketball,
He's easily seen 'cause he's so tall,
Won honorable mention in his favorite sport
Thar's genius thar, Ya little wart.
-17. She's tall, attractive and has lots of poise. She likes to dance and is stubborn.

- | | | |
|----------------------|---------------------|---------------------|
| 1. Eddie Buckles | 7. Arlene Hiatt | 12. Blanche Carver |
| 2. Smoky Brogdon | 8. Lorraine Cranmer | 13. Marcia Peterson |
| 3. Virginia Vail | 9. Bruce Corl | 14. Helen Hedrick |
| 4. George Buechler | 10. Maxine Stephens | 15. Tom Smith |
| 5. Tom Hannum | 11. Mike Enich | 16. Darrel Hanson |
| 6. Dorothy Robertson | | 17. Annabel Pepper |

MORE ACTIVITIES

THE BOYS' SCIENCE CLUB, under the direction of Mr. H. L. Cunningham, gives an opportunity to those who are especially interested in science to do advanced experiments in physics and chemistry. The club meets every other Wednesday, and the programs consist mainly of experiments and demonstrations performed by club members. This year, several members of the club attended Science Day at Iowa State College. Jack Swander, Junior Savereid, and Dwight Morrison were elected to represent the club in the Science Day competitions in physics.

★ ★

THE COMMERCIAL CLUB, composed of fifty members and under the combined leadership of Miss Weber and Miss Crawford, has had a very interesting year's work. A contest has been conducted between the different departments of the club to see which group could put on the best program. Miss Gertrude Nygren and Miss Viola Pollard were the judges. A number of plays and marionette shows have been produced, which proved very interesting to the rest of the club. The aim of the Commercial Club is to promote the interest of its members in commercial work.

★ ★

THE SOCIAL SCIENCE CLUB, headed by Miss Stena Hansen, had as its aim for the year, "The Further Interest of Club Membership Along Economic and Civic Lines". Among the outstanding programs were: an Armistice Day talk by Rev. Woodward; a talk on Civil Service by Mr. Moffatt, assistant postmaster; and a talk on "The Spirit of Christmas and Christmas Giving" by Mrs. Saylor, head of the Social Service work in Boone County. Each year the club aims to render a service to the school and to the community by sponsoring a Christmas tree. The gifts are turned over to social workers.

★ ★

THE PRELIMINARY DECLAMATORY CONTEST attracted about thirty students this year. After being coached by Miss Lamb, these contestants gave their readings before assemblies and club meetings, and were judged by the different teachers of the school. Ten students were entered in the home contest and the winners were: oratorical, Eleanor Shaw, who read "A Way of Life"; dramatic, Dorothy Robertson, reading "Mary Stuart"; humorous, Barbara Hinrichs, who read "The Flea Gang's First Cigar". All three attended the preliminary state contest where Misses Shaw and Hinrichs won first honors again. Next, these two girls won the sub-district contest. Following this, Eleanor Shaw survived the pre-district and district contests and became eligible to enter the state contest, which had not been held when this book went to press. This is the first time in the history of the school that any student has reached the state contest.

★ ★

SPRING ATHLETICS in Boone High School include football, golf, tennis, track, and basket-ball. About forty-five boys were out for spring football, so the prospect is good for a strong team next fall. In golf, the boys are playing elimination games to select a team to send to the tournament to be held at Marshalltown. Tennis is just getting under way, with Mr. Lyle Quinn in charge. A large group of boys reported for play. Mr. May expects to select a track team which will enter competition with other conference teams. The expenses for track, however, will be borne by the members of the team rather than by the athletic department. About fifty freshmen and sophomore boys reported for spring cage practice, and several of these boys will be members of the team next fall.



Junior Broadcast

THIS is station "J", B. H. S., bringing you the news of the day and presenting Norman Winchel Erbe, our news commentator.

Tick, tick, tick; Flash! Paris, France—Three brain-trusters of great renown, Dwight Morrison, Junior Savereid, and Frank Linderblood, have just brought out their new Unabridged Dictionary. This mammoth work is causing a great stir among intellectuals.

Hollywood, California—It is rumored that the famous movie star, Jean Burke, and her twin sister Mary, are journeying to Hawaii for a rest. Incidentally, Mary won the national honors for being the best all around basketball player. Somebody said, "All around the floor".

New York City—Jean Patterson, well-known for her interpretations of Juliet in "Romeo and Juliet", has decided to do "Everybody She Can".

Dallas, Texas—Robert Modeland, the indescribable hero of the road, decided "Better Late than Never", when he walked home from a car ride after being stuck in the mud for two hours.

Chicago, Illinois—Nellie Morgan, Blanche Carver, and Byron Holst have signed a contract to sing at Mary Stump's cafe "Walk Inn and Stumble Out". It's already quite a place and with this trio as an added attraction business will be rushing—(out).

Des Moines, Iowa—Lorraine Cranmer and Frances O'Connell seem to have taken the place of the Cherry Sisters, famous many years ago. Dancing, singing, and dialogue acts are done behind steel screens. The first performance afforded the girls fruits and vegetables for a three days' feast.

Boone, Iowa—Ten years of practice have finally brought Eugene Lindbloom the chance he has been hoping for. He is now trumpet soloist for the "Blo-Noisy Symphony Orchestra".

Boston, Massachusetts—Alex Washington, star athlete, recently placed in ten of ten events at the Olympic Games. He won second place in four events, third place in three events, and fourth place in three events. More power to you, Alex!

New Orleans, Louisiana—Mayor Jack Leland, gong ringer on the new "Unoriginal Amateur Hour", failed to ring the gong on Mike Enich, tenor solist, and Mildred Fetszer, accompanist. Jack admitted later he must have been asleep or spellbound. The result is that Mike and Mildred are with unfit four torturing audiences up and down the west coast.

New York City—Kurt Heaton has realized his one ambition! He has been engaged as a member of "The Modern Gigolo" Club, to work for five thousand gals a year.



Portland, Maine—A newly organized cosmetic company has for its executives Evelyn Nordstrom, Lavonne Nettles and June McDevitt. They call their firm the "3B's C. Company". "Bigger, Better, Brighter Cosmetics".

Oshkosh, Wisconsin—Guy Brogden, inventor of "No Seams, No Rip Overalls" has invented a new and unique rubber bathing suit. It seems he is an admirer of "Grace" and beauty. Grace whom? Just ask Guy.

Omaha, Nebraska—The socially prominent Edith Gunn was hostess at a formal dinner last week. Some of the guests included: Winnifred Gerrard, President of the Manniken Model Co.; Mildred Olander, lecturer, who spoke on "What To Do When There is Naught To Do". Other famous folk present were Arlene Sanders, Irene Pohl, Dorothy Hall, and Marie Thede.

Atlanta, Georgia—Kenneth Anderson now owns one of the largest coffee companies in the United States. It is said that he drinks over fifteen cups of coffee each day. Trying to boost business, Kenny, or drink up all your profits?

Miami, Florida—Helen Hedrick, Bringling Brothers Circus' fat lady lost so many pounds lately that the owners billed her with the Human Skeleton Act.



Washington, D. C.—It is rumored in Washington that James Wallace is to take the place of his famous namesake, Henry Wallace, as Secretary of Agriculture.

Brooklyn Zoo, New York—Would you believe it Edward Buckles is now a hippopotamus tooth extractor. And such a big business!

Wild Woods, Maine—Richard Hardy is now a pugilist of the first class. He has been knocked down only once—the first, last, and only time he was in the ring.

Hollywood, California—Gretchen Gagger, who looks so much like Marlene Dietrich, is now playing as her stand-in. Maybe she will eventually take Marlene's place as number one box office attraction. I said "Maybe".

And now, friends, we have in the studio that unique bookkeeper, June Witt, who will give a few pointers to rising young bookkeepers—may I present Miss Witt?

June: "My deah, deah radio audience, the first thing a bookkeeper needs is a job. That is the most important. The second requisite is a slight knowledge of bookkeeping; that may prove valuable in keeping that job, if she is lucky enough to get the job. I believe that is all I can say on the subject. Goodnight".

This concludes the news-flash for today, and, in parting, may I add that if anything I've said doesn't hurt your feelings—then it isn't so.

HAVE YOU HEARD THAT....??

JOE CANTLIN practically financed his venture into Junior College with the surplus from sundry crap games

LORRAINE CRANMER is a firm believer in the possibilities of Leap Year. (How about it, Cliff?)

MIKE ENICH is not a woman hater? (Ask E. Shaw, Mimps, etc.)

CARL SPONG is the kind of person who would drop a mouse from the third floor to the first as a big joke?

BARBARA HINRICHS believes in going after what she wants with tooth and nail—be it man's ring or the man?

J. ALLENDER was stuck with all the bills for the little spree after the Marshalltown game. (Did we hear you scream, Nadine??)

MR. DAEHLER spent quite a while reading that library magazine he branded as illicit. (We suppose that was an "ad" he was smiling about.)

The girl at the switch-board gets a bit irked by the frequency of communication between 1480J and 1889J. (Rheumatic, or romantic fever ??)

As far as the Boone representatives at Lake Robbins were concerned, Herbie Kay played "The Music Goes Round and Round" all evening.

BUDGY CLAPP gets twice as much fun out of a date as anybody else: having the date,—and telling about it the next morning.

The SMITH-MAXHEIM duo specializes in practical jokes. (And why doesn't B. Carver like hospitals?)

E. LINDBLOOM has a sleuthing bent. It seems he trailed his "O.A.O." all the way to college so she wouldn't step out with any of the campus cowboys. (And was Betty burned up!)

R. UPDEGRAFF doesn't know his women. It seems he went stepping with a palsy-walsy of his beloved, and the gals got together and compared notes!

A PARTING WORD FROM THE STAFF

*W*E toiled throughout the senior year;

The labor has been manual.

And now we have, we greatly fear,

Little Orphan "Annual".

Go, little book, and may you bring

The shekels home to roost.

And may you give the senior class

Not a boot—a boost.

If there are words within our "ann"

That maybe get you down,

Rebel, my friends, do what you can—

But we are leaving town.

CALENDAR

September

Dear "Booky",

You're an ole meanie, Booky; after all that elegant vacation we've got our noses at the grindstone again;

Bruce and "Mick" began things with an assembly where we met the two new coaches. Incidentally, the fellows who are out for football training think they're tops; of course the girls haven't noticed them—much. After doing honors by the coaches, we voted on the three junior yell leaders. Jimmy Wilson, Francis O'Connell, and Kurt Heaton struck us as the peppiest (or the least awkward) so they got the job. The first game was with Eldora, and somehow everything was perfect. First, we won the game 18-0; we weren't disappointed with our new yell leaders, and everybody had a keen time at the dance afterwards—thanks to one masculine member of the high school. You see, Booky, the bosses didn't consent to our having the dances in our gym; so we have privately sponsored affairs in various halls downtown. By the by, I hear there's a profit in the business too!

The week after that, we played Mason City and won 14-0. The following week we came on the field with all the self-confidence in the world (plus Mike Enich) and beat Webster City 13-0.

Right in the midst of all this confusion, I see declaimers, debaters, glee-clubbers, etc., dusting off their faculties in preparation for forthcoming events.

And with slight weariness from a long day's work—I close with

Best wishes,

"HOOKY"

October

Dear "Mike"

Yowsah! We're really taking all the football honors this season—Indianola adds another to our list—score 25-0. The next week, just on account of a few friendly gestures here 'n' there, we came out of the Oskaloosa battle 13-13. Tie that!

But I always sez, "You can't always win", and Fort Dodge proved it by taking us for a little run around—to be exact, 6-0.

But we were glad to go to Fort Dodge, and we had lotsa fun.

Everybody enjoyed seeing the Masque and Buskin Dramatic Club present a play entitled "A Glimpse of Stephen Foster", at an assembly, October 9; and, believe it or not, they all listened in when it was presented over station WOI the very next day. The Girls' Glee Club made the play very effective by humming some melodies by Stephen Foster.

Now we're really being cultural. Geoffrey O'Hara, that grand old composer of "Katie", was heard in an assembly. I'll never forget his personality. Dr. Cloud Smith followed with portrayals of scenes from "Davy Crockett". Dr. Smith held us completely spellbound.

All this went to make a fitting prelude for the tests which took for some and didn't for others. Anyway, I am now waiting, with cold perspiration on my brow and a hard lump in my throat, for the fateful papers to be returned.

Love,

"IKE"

November

Dear "Bunk",

I'm really disillusioned! Newton beat us first, 18-12, and on top of that, our dear old friendly enemies from Ames caught us in an off moment and walked out with 6 points to our nothing. The last game too! Hi Ho! Life is like that!

November 13, Mr. F. L. Buckingham gave us a very interesting talk on European conditions. It seems Mr. Buckingham has spent a good deal of time in Austria, England, and Italy—so he really knows whereof he speaks.

On the 18th of the month, that big bad "G" man, W. H. Blaine, told all of us how not to become criminals. Very, very interesting!

The annual Masque and Buskin and B. H. S. Players' play was presented in the Auditorium on the night of November 22. The play, entitled "And Let Who Will Be Clever", was a startling success much to the satisfaction and, perhaps, surprise of the sponsors, as we were a little dubious about cues; but fate was with us and it came out all right. Tired—Nightie night,

Love,

"SUNK"

December

Dear "Jingle",

Having laid my stocking away in anticipation of another Christmas, and feeling very jovial and good natured, I will try to tell you of the more important things that happened this month.

It seems that Santa dropped around a little early this year to leave us victors of the first basket-ball game of the season. It was with Madrid, the score, 36-19.

Going on in much the same way, we're jarred into the realization of the Christmas spirit around us.

The Social Science Club erected the traditional Christmas tree in the hall and many of the pupils brought "goodies", which were distributed among the poor as a Christmas greeting from Boone High. As the First Girls' Glee Club, accompanied by violins, sang carols in the halls, we were granted our freedom on the nineteenth to enjoy two weeks vacation, only to return on the night of the 20th to see our team beat Oskaloosa, 35-18. We all agreed that it was worth it and decided never to decline another chance like it.

Each one spent his two weeks in his own fashion, meeting at occasional "get togethers" given by different members of high school, but everyone seemed to have had a wonderful time.

Having withstood cold gusts of wind on my back for the past half hour, you'll excuse me if I return to a more advantageous point near the fireplace.

Love,
"BELLS"

January

Dear "Gleezle",

From a slight distance, this new year promises to be a wow—what with all the resolutions going around about being state champions, getting higher grades, etc.

There were no hard feelings when we ditched old books, old test papers, and old teachers; but then we turned right around and got ourselves a whole bunch of new ones.

We played seven basket-ball games this month and won six! Not bad, boys, not bad! Incidentally our pal Jimmy Reynoldson made possible some dances after several of these games, and we all had an elegant time. Happy landings,

Love,
"GLUG"

February

Dear "Brrr",

I'm exhausted! These yar whistling winds are getting me down! Here I am with one hand on the last chunk o' coal, and praying that someone like Santa will drop us a half ton. (Two mines have been given up completely.)

But somehow the team seems to be on the up and up. After a few postponements on account of weather conditions, they played three games and won two of 'em. Down with Ames, I sez.

Professor Harry Barnes entertained us with humorous readings in an assembly February 26, and he was liked so well that we kept his train waiting for an hour (or maybe he was waiting for the train). Anyway, we're glad he stayed.

Needing very slight introduction, our famous little declamer, Eleanor Shaw, steps before us winning the Boone contest with high honors. Congratulations Eleanor!

Wow! That last gust of wind almost blew me off my chair. Pardon me, while I go fetch another coat and a pair of overshoes.

Love,
"GRRR"

March

Dear "Mix",

First come the Declamers, and of course our little Eleanor with high place in the preliminaries and sub-district both. Some gals have all the talent!

In the final basketball games of the season, we really showed spirit and beat Oskaloosa. Champs come and champs go, but good sports and good players are always sought for.

The music organizations from Simpson College entertained us at an assembly on March 9. The program consisted of a string quartet, several vocalists, and a punster. Everyone enjoyed the program, especially the punster.

Our Debaters have just returned from the State Convention in Iowa City carrying with them a reputation well worth their while, and we're proud of them.

This wouldn't be complete without mention of our musical department. The Girls' Sextet, the First Girls' Glee Club, and our soloist, Jane Mauck, presented a program for this month's meeting of the Woman's Club.

Let's see—I think that's just about everything. I'll see you in my dreams.

Love,

"NIX"

April

Dear "Bill",

Hi! Ho! Aren't these delightful days? It seems we started right, with Dr. King of Cornell College giving us a little talk on the psychology of drinking (somebody's psychic around here). Not long after that, the "Rufus Rose Marionettes" were presented to us. There was a slight admission for the pupils, and the profit was put in a fund for the music department.

By the by, word has just been received that Eleanor Shaw is eligible for the State Declamatory Contest being held at Jefferson in the very near future. Eleanor is the first person to represent Boone High at the State contest. We're sure she has every chance to win and wish her the best of luck.

Mama! Papa! We're all kids again! (Never mind, dear teachers, it's only one day. Tomorrow we'll be ladies and gentlemen again!) Chuckle! Chuckle!

The twenty-fourth and the Senior Assembly quickened the beat of each heart as the members of the Senior Class bade general farewells to Boone High School.

Toodledoo my palsy.

Love,

"COO"

May

Dear "Ruffles",

The Seniors are getting the finishing touches, and this month has been a busy one.

It all began with Hobo Day and the All High School Party last night. Thanks to the sponsors, it was a wow!

The next week saw the school exhibition, and the following week the Junior-Senior Reception. All dressed up in ruffles and tucks, the girls and their handsome escorts danced to the strains of Freddy Mauck's orchestra, an incident always to be remembered.

Soon afterwards the senior play was presented and was termed a success.

Reverend Bean presented a very interesting and encouraging talk to the Class of '36 at the Baccalaureate ceremony held the night of May twenty-fourth. Commencement, the twenty-eighth, brought the final distribution of diplomas.

With a long sigh from the seniors and cheering shrieks from the other students, Boone High was closed for the summer on May twenty-ninth.

And I think we all earned our rest.

Love,

"TUCKS"

BASKET-BALL

(Continued from Page 29)

RECORD OF THE BOONE HIGH SCHOOL BASKETBALL SEASON

Preliminaries

December	6	Boone	36	Madrid	14
December	10	Boone	36	Eagle Grove	19
December	14	Boone	43	East Des Moines	39

Conference

December	20	Boone	35	Oskaloosa	18
January	3	Boone	30	Grinnell	26
January	7	Boone	24	Ft. Dodge	21
January	10	Boone	21	Marshalltown	15
January	20	Boone	25	Newton	18
January	24	Boone	21	Ames	30
January	27	Boone	35	Ft. Dodge	26
January	31	Boone	30	Oskaloosa	23
February	7	Boone	18	Grinnell	20
February	21	Boone	21	Newton	16
February	28	Boone	12	Ames	23
March	6	Boone	26	Marshalltown	24

Won—9 Lost—3

District Tournament

March	12	Boone	32	Ogden	16
March	13	Boone	42	Story City	13
March	14	Boone	21	Ames	26

Won—2 Lost—1

FEATURE

(Continued from Page 32)

Second thought:

The month of October is a very noted one—

It has to its credit Hallowe'en and Edith Gunn;

She's a charming Scotch lassie with flashing brown eyes,

And to top it all off, she is very wise.

Bruce Corl was nearly a Christmas gift,

Born in December when snows often drift.

The pride of his life is his curly (?) black tresses;

Does he rate with the girls?—I'll give you three guesses!

I guess that's about enough of my foolishness for one time, Sis. Please write and tell me what you think of my inspirations—and DON'T say "Piffle, piffle" or "Tush, tush, tush". One unkind word might make me commit suicide, 'cause I'm feeling very, very low.

Love,

Jenny.