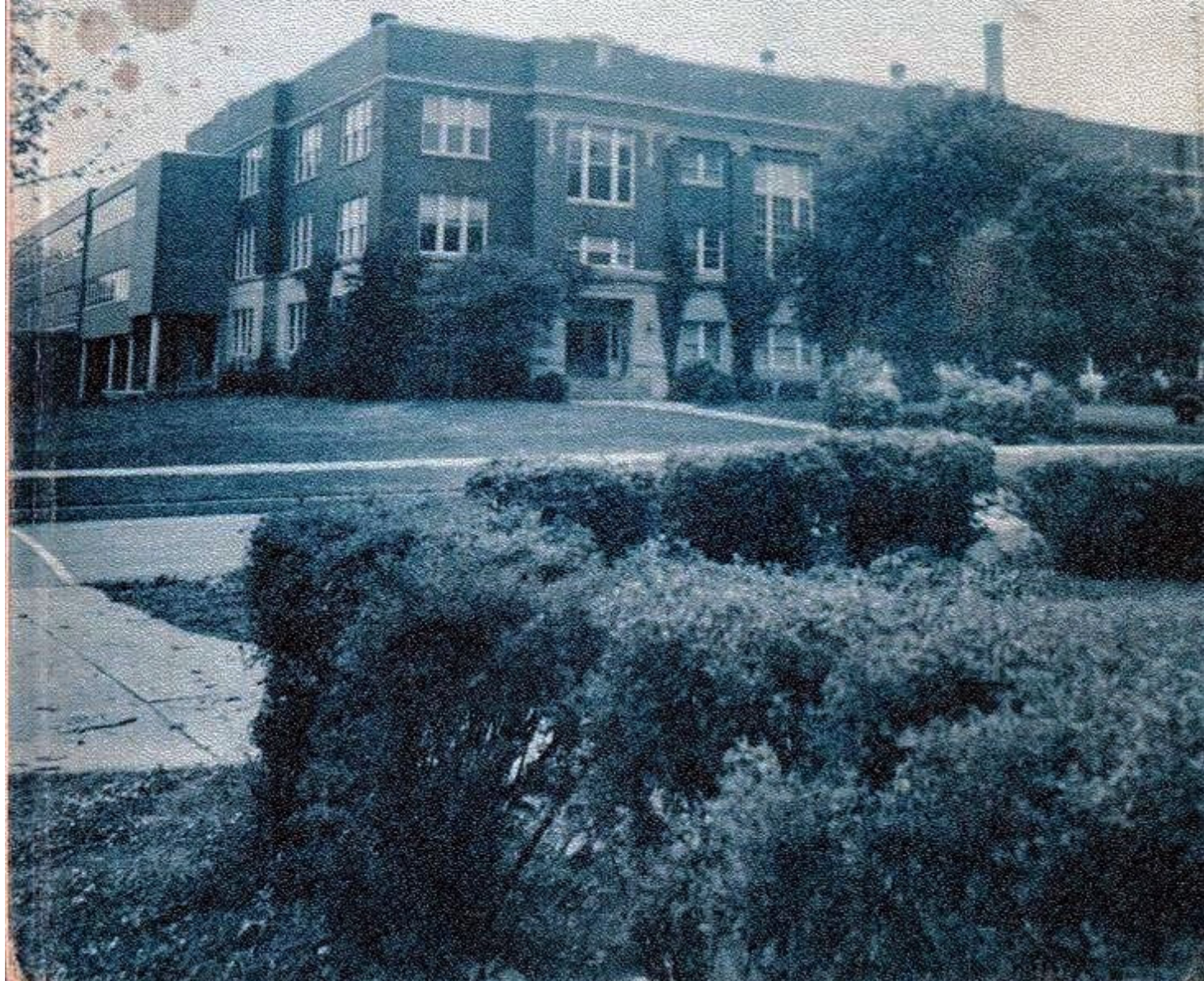


Scroll

1956



the 1956 Scroll

BOONE HIGH SCHOOL

Boone, Iowa

Co-Editors

DARRELL KRUSE
KAY NAREY

Editor

JOYCE LARSON

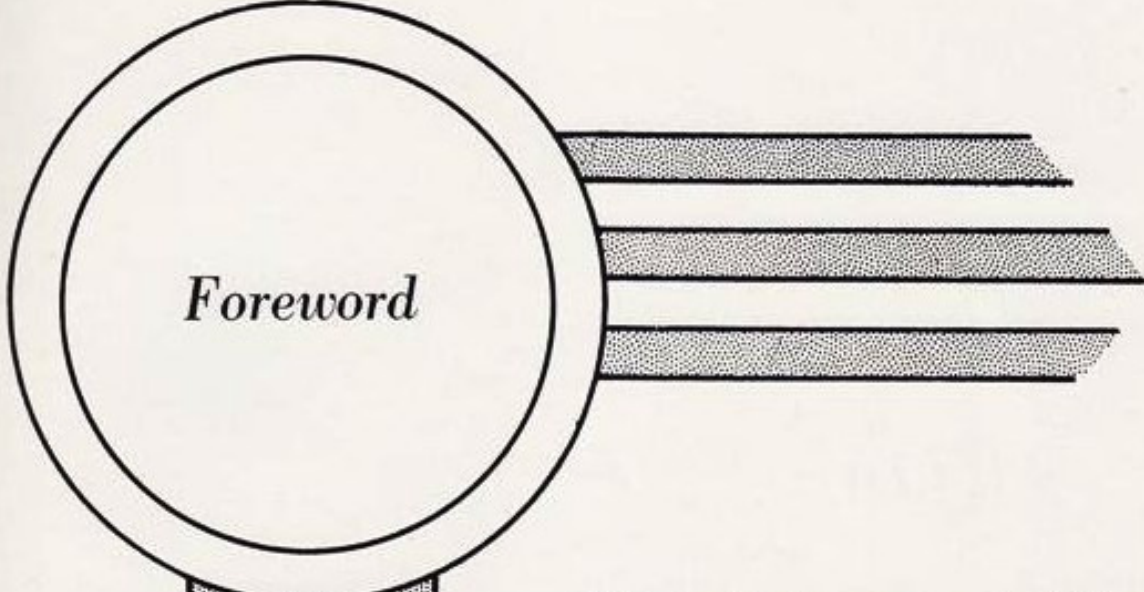
Advisors

MR. STOCK
MISS EALY

Dedication

As our elementary and high school years draw to a close, we realize how important these years have been. Not only have they been beneficial in the sense that they have given us much for our future years, but they have also provided memories on which to reminisce.

We hope to record a few of these memories in the pages of this book, and we dedicate this book to those memories.



Foreword

This year has been a year of additions for the students of Boone High School.

Not only have our educational opportunities and enjoyment been increased by the addition of a beautiful new building, but also we as individuals have gained many more important additions. With our previous knowledge, we have gained newer and more accurate knowledge. Many of our old prejudices and attitudes have been cast aside and replaced by a better outlook on life. To our older friendships, we have added more and new friendships and acquaintances.

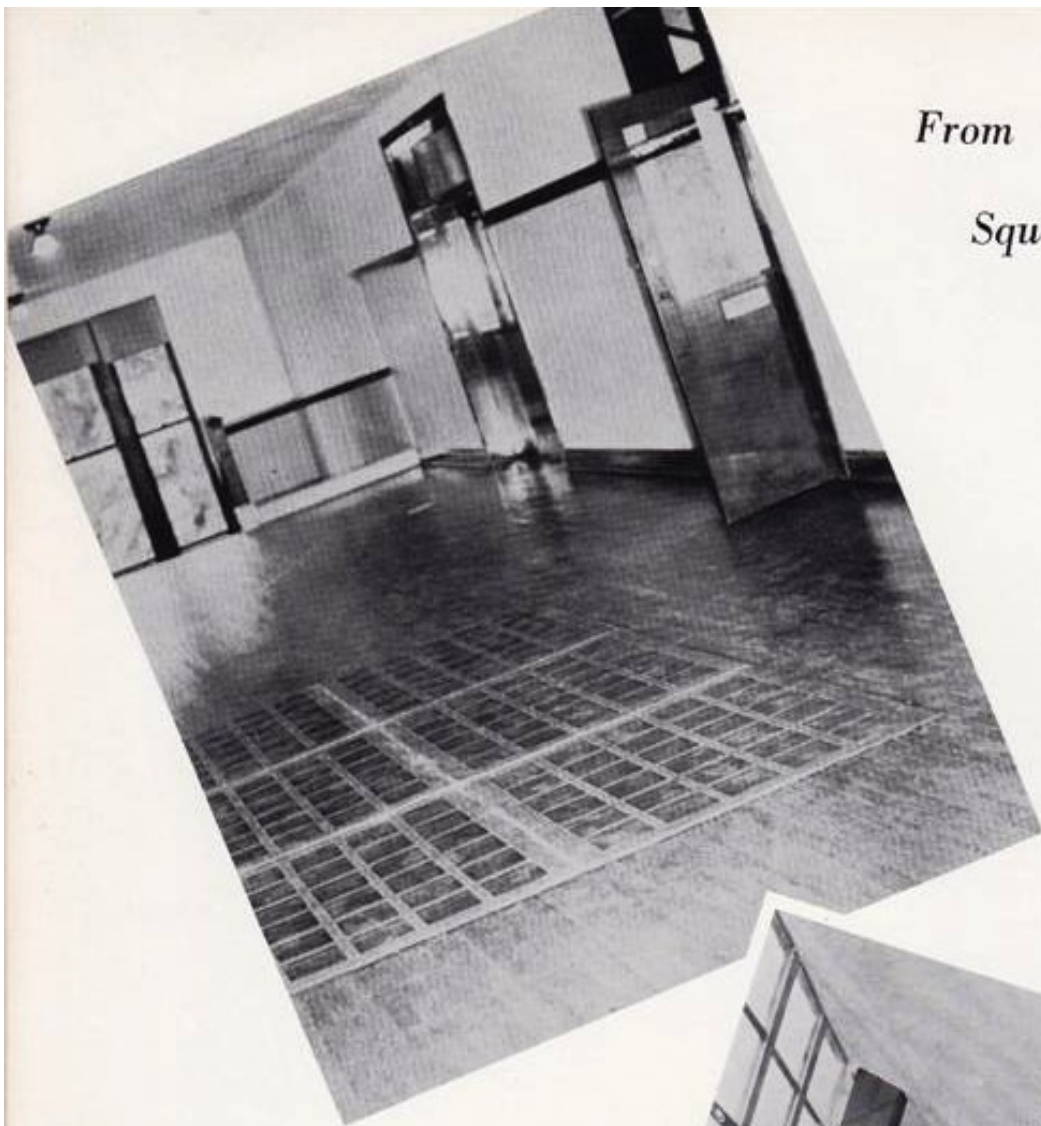
In these ways we believe the students of Boone High have advanced from the old to the new.

FROM

THE

OLD





From
Squeaky
Floors

to
Tiled
Silence

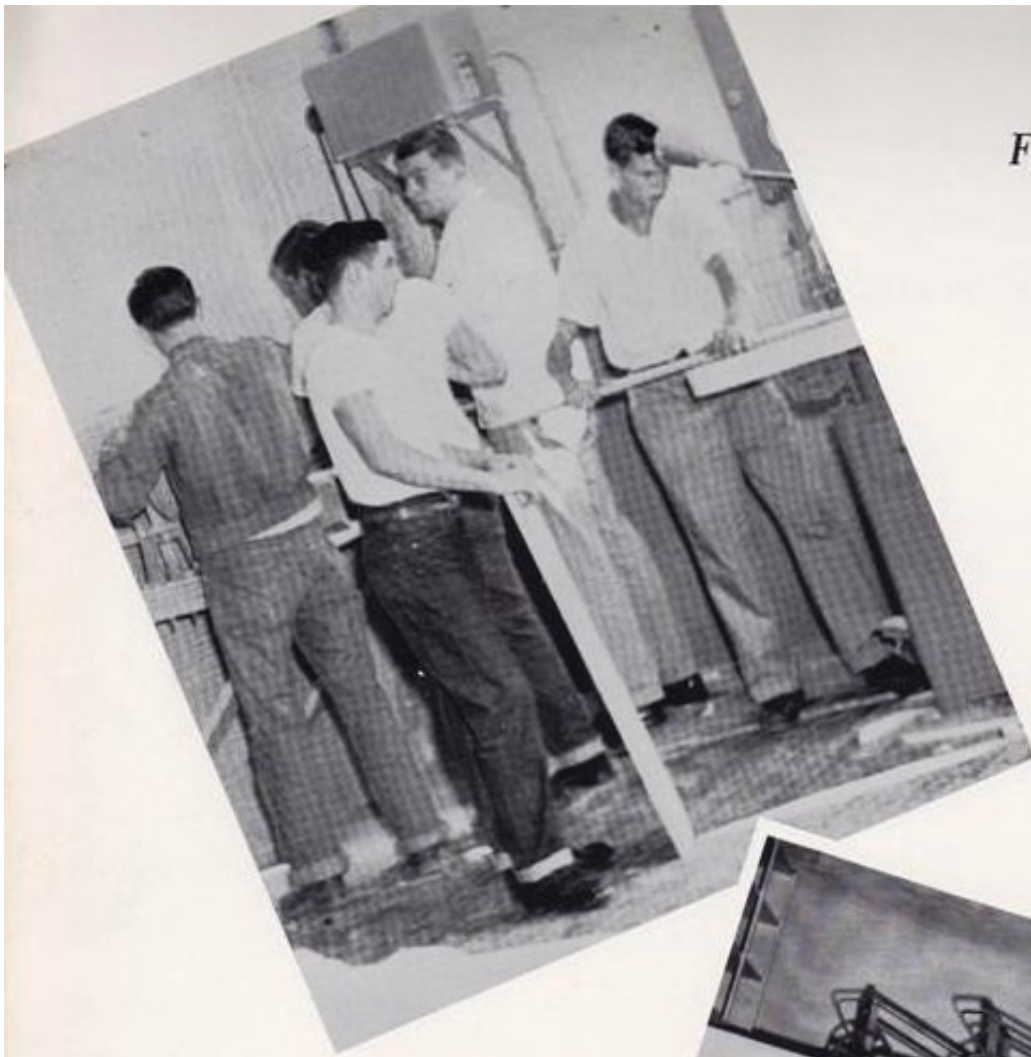


*Building
for*



Tomorrow

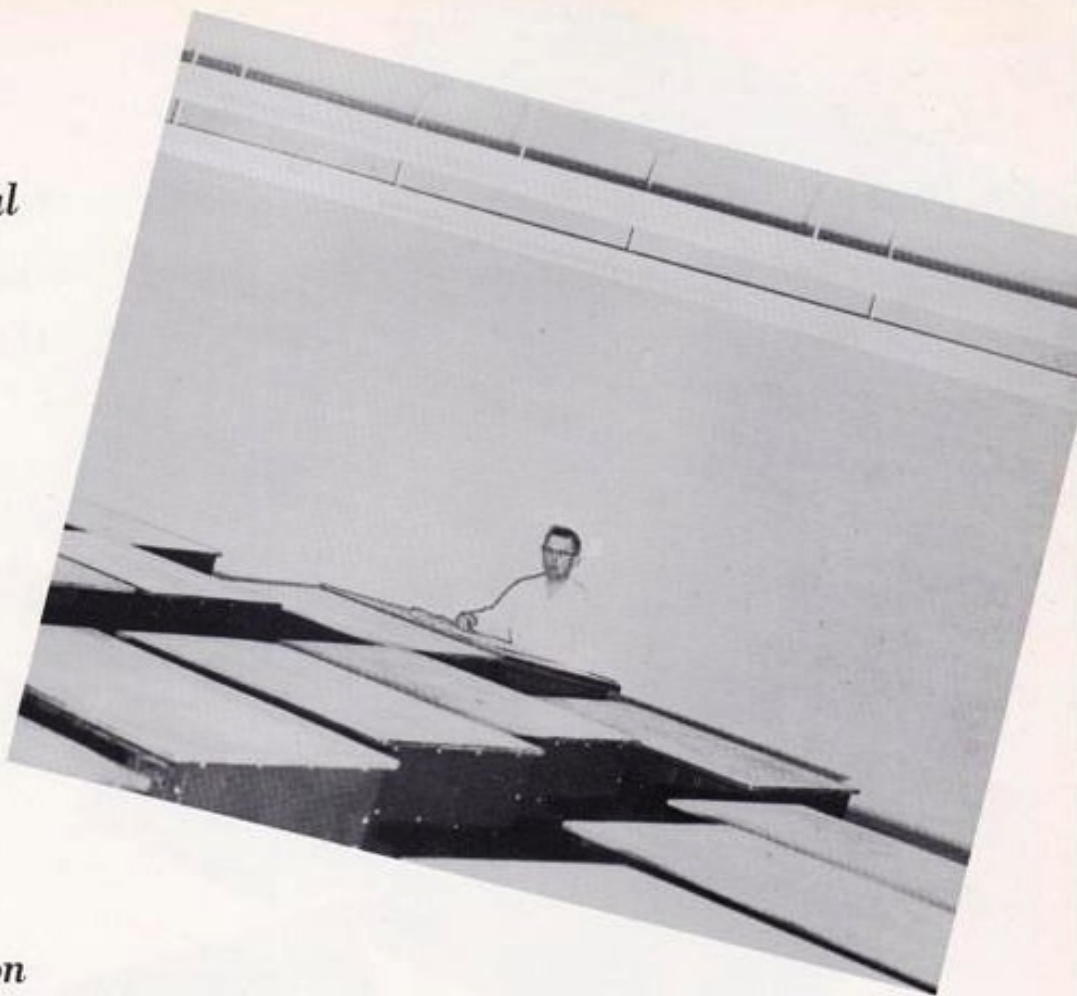
*From Crowded
Corners
to*



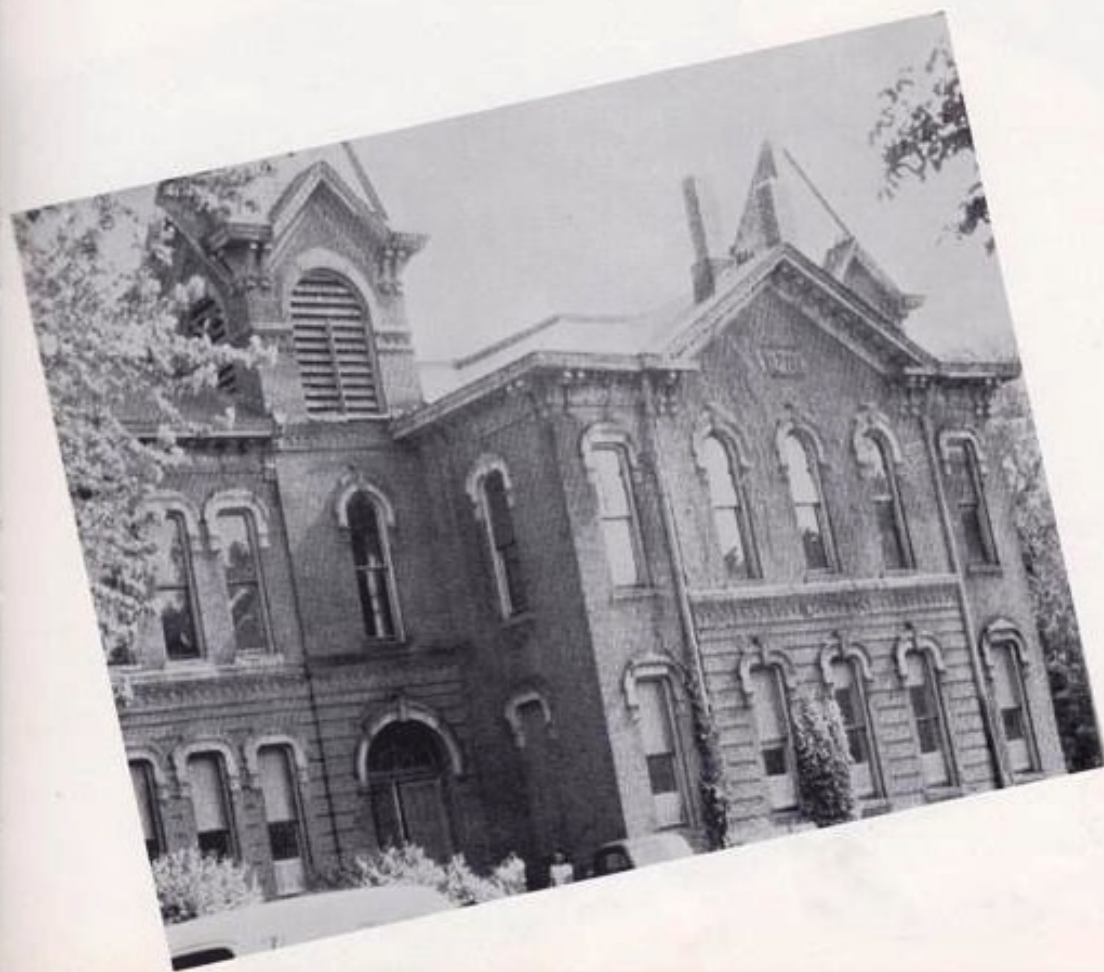
*Spacious
Rooms*



*Mechanical
Drawing
Gladly
Left*



*Old
Washington*





*Junior
Chorus
Moved*

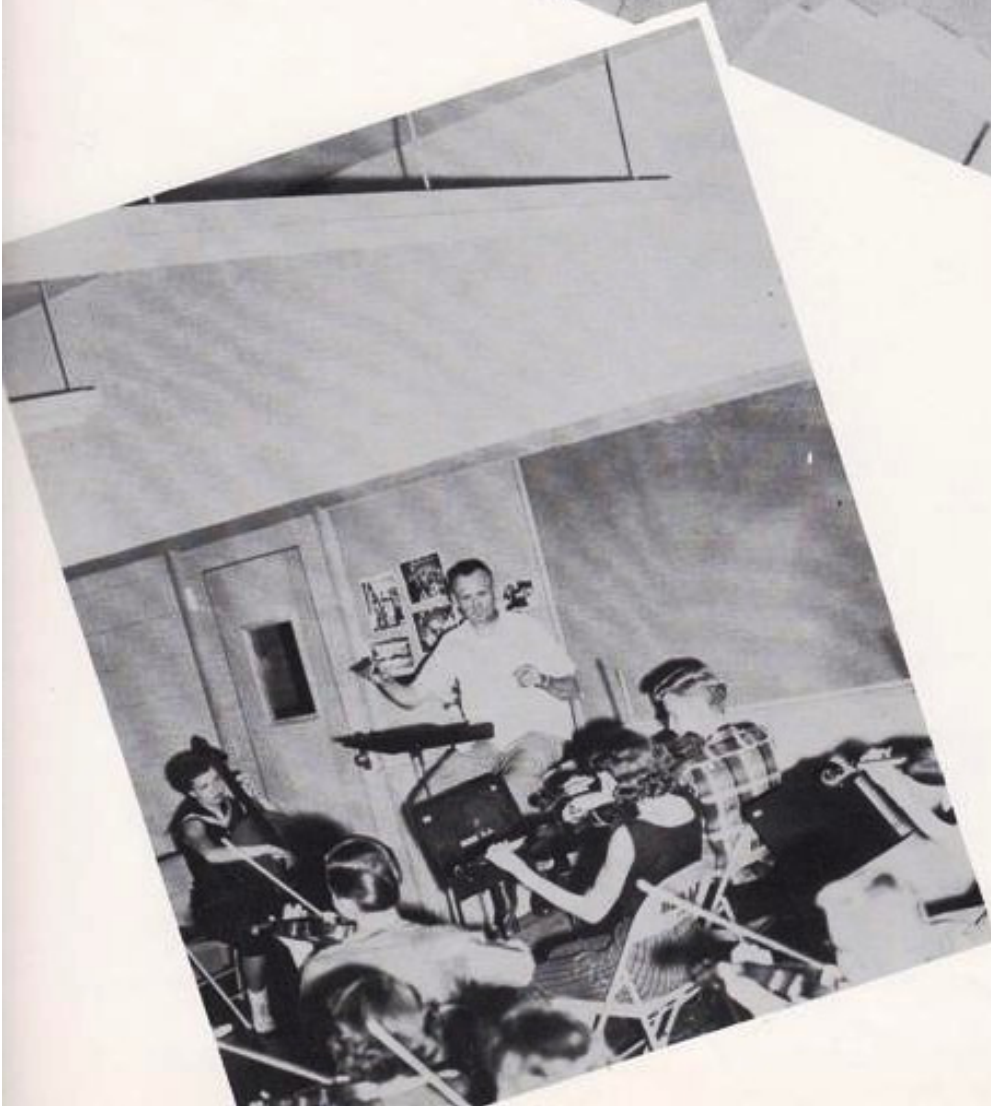
*to
New
Quarters*



*New
Building*



*New
Mood*



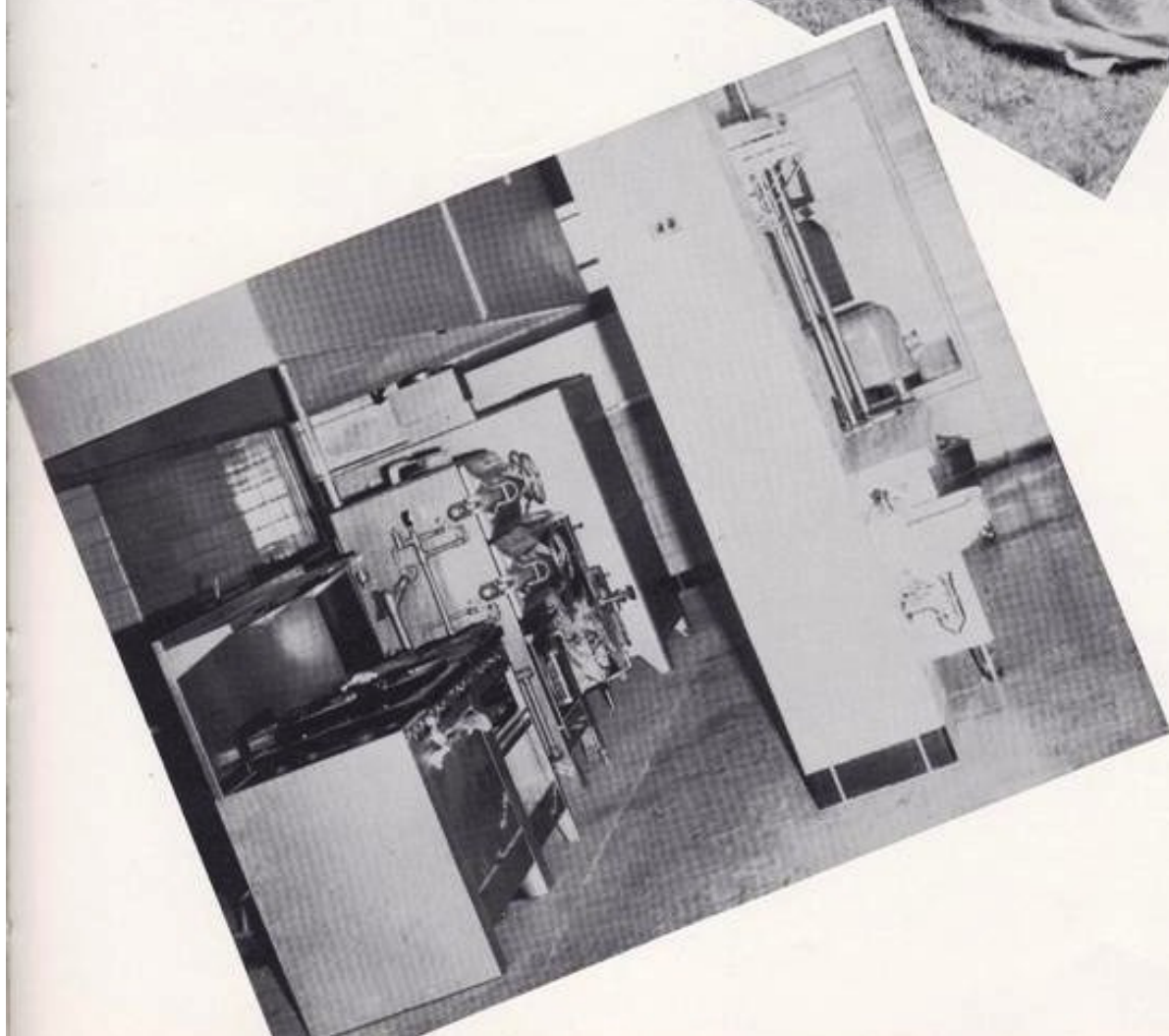
*A
Pleasing
New*



Environment



*From
Ground*

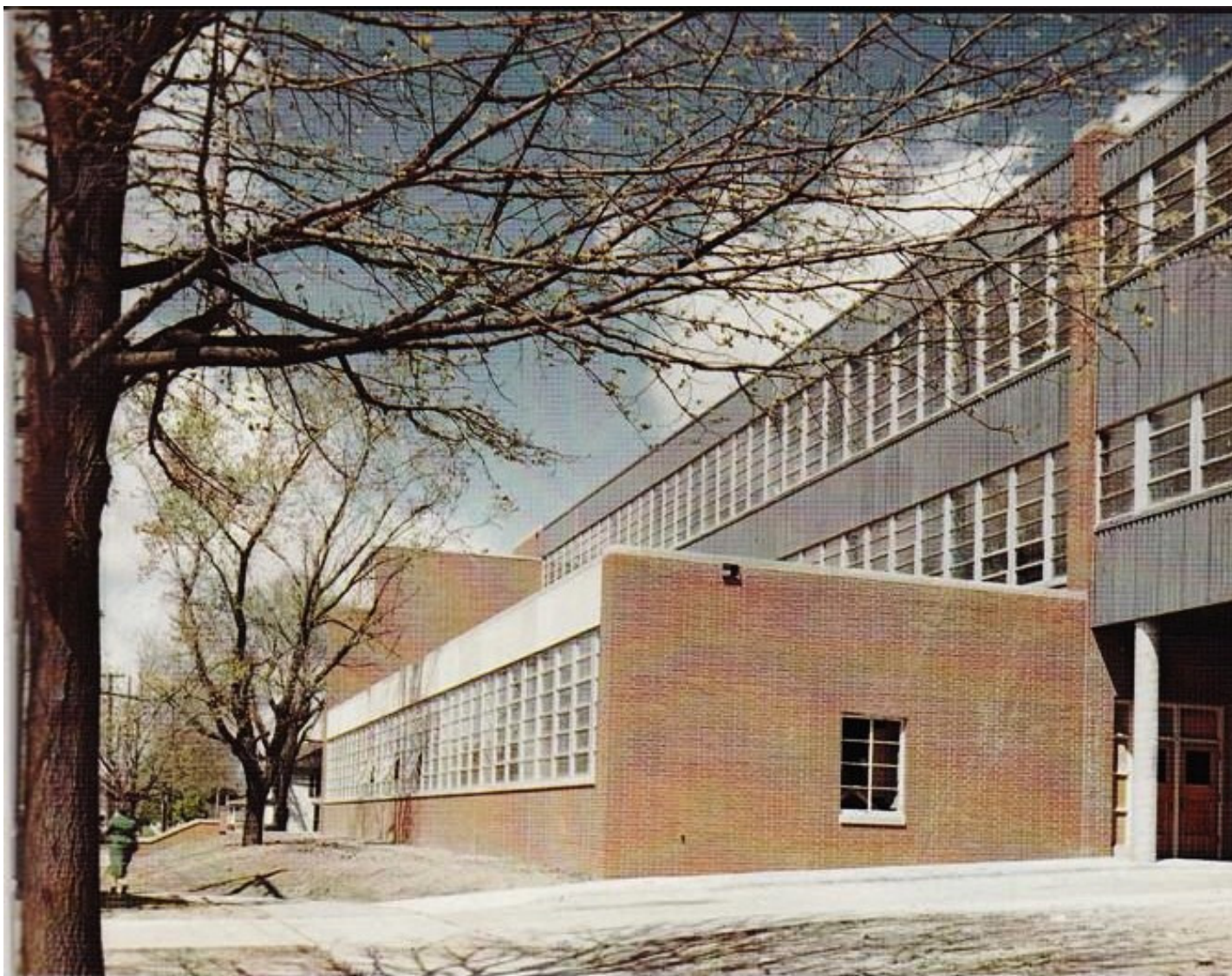


*to
Second
Floor*

TO

THE

NEW



“Something Added”

One of the pleasures of this last year has been our new addition. The facilities of this building have been enjoyed by every one of us who has had the privilege of using them. The building has been especially appreciated by the members of the music department who benefited from such additional facilities as sound-proof practice rooms and assembly rooms, individual instructor's offices, and fine lighting. The shop classes have also enjoyed the opportunities afforded them by the new addition. Most of all, the entire student body has really taken full advantage of the wonderful noon meals which have been served in the new cafeteria. As a whole, we have all greatly benefited from “something new.”

Administration



*Board
of*

Education



FACULTY AND ADMINISTRATION





Reading counter-clockwise, starting directly above:

Study Hall Supervisor: Mrs. Ick

Librarian: Mr. Tillson

Speech: Mr. McCartan, Miss Tillery

Girls' Advisor: Miss Thornburgh

Boys' Advisor: Mr. Abbott

School Nurse: Mrs. Carlson

*Mrs. VanNess and Miss Brunner, Secretaries,
Principal's Office.*

*Mrs. Saylor and Miss Benson, Secretaries,
Superintendent's Office*





Reading Clockwise, left to right:

Mathematics: Mr. Beck, Mr. Crozier

Commercial: Miss Ealy, Mr. Hartley, Miss Plumb

Physical Education: Mr. Roloff,
Miss Vanderbeck, Mr. Brookhart

Fine Arts: Mr. Scholl, Miss Osborne,
Mr. Bartholomew, Mr. Mische

Cafeteria—front row: Mrs. Clausen, Mrs. Stolte,
Mrs. Wells, Mrs. Ades. Back row: Mrs. Reed,
Mrs. Richards, Mrs. Lind, Mrs. Swanson, Mrs.
McAlpine.

Custodians—Front row: Mr. Kiddie, Mr. Wyler,
Mr. Brown. Back row: Mr. Patrick, Mr.
Tonsfeldt, Mr. Smiley, and Mr. Thompson.



Science: Mr. Shadle, Mr. Clifton, Mr. Stutzman, Mr. Devaney. Seated, Mr. Cunningham.



Social Studies: Mrs. Hartley, Mr. Abbott, Mr. McLeran, Mr. Lovin, Mr. Thorngren, Miss Pagel.

English: Miss Ulferts, Mrs. Taylor, Mr. Stock, Mrs. Stevens, Miss Linderblood.



Not Shown:

Arts and Crafts:

Mrs. Brunner, Mrs. Absher, Mr. Hove, Mr. Thompson, Mr. Jones, Mr. Lein.

SENIOR HIGH





ACHENBACH, CARYL: *College Prep.* "Y" 1, 2, 3; Future Nurses 2, 3, Sec. 2, Pres. 3; Chorus 2, 3; Small Groups 2, 3; Orchestra 1, 2, 3; Orchestra Small Groups 1, 2, 3; "Fog Island" 1; Camillo 2; Pep Club 1, 2, 3; Recorder 1; Dolphin Club 1, 2.

ALBER, RICHARD: *General.* Chorus 2, 3; Glee Club 2, 3; Orchestra 1, 2, 3; Orchestra Vice President 3; Music Contest 1, 2, 3; All-State Band 2, 3.

ANDERSON, BONNIE: *Stenographic.* Glee Club 1, 2; Chorus 3; Pep Club 1, 2, 3.

ANDERSON, CHARLENE: *Vocational.* Glee Club 1, 2; Speech Club 2; Contest Work 2; Stage Crew 2; Y.O.B. 1, 2.

ANDERSON, JIM: *College Prep.* "Y" 2, 3; Chaplain 3; Stage Crew 2; Student Council 3; President 3; Booster Club 2, 3; Football 1, 2, 3; H.R. Pres. 1; Basketball Manager 1; Projectionist 2, 3; Track 2.

ANDERSON, JOYCE: *College Prep.* "Y" 1, 2, 3; Future Nurses 2, 3; Vice Pres. 3; Orchestra 1, 2, 3; Scholastic Society 1; Librarian 1, 2, 3.



ANDERSON, LEROY: *General.* Y.F.C. 2, 3; Vice-Pres. 2; Pres. 3.

ARRINGDALE, WALLACE: *College Prep.* "Y" 1, 2, 3; Chorus 1, 2; Glee Club 1, 2; Small Groups 1, 2; Booster Club 2, 3; H.R. Pres. 2; Football 1, 2, 3; Swimming 1, 2, 3; Scholastic Society 1, 2; Projectionist 1, 2, 3; Track 1; Class Pres. 2.

ASPENGREN, ARTHUR L.: *College Prep.* Booster Club 3; Football 1, 2, 3; Basketball 1; Track 1, 2, 3.



BALLARD, KOREEN: *General.* "Y" 1, 2, 3; Scroll Advt. 2, 3; Manager 3; Glee Club 2; Small Groups; Pep Club 1, 2, 3; Quill & Scroll 2, 3; Dolphin Club 1, 2, 3; Cheerleader 1, 2, 3; H.R. Sec. 1; Librarian 1, 2, 3.

BARRY, ROBERT: *College Prep.* "Y" 2; "Best Foot Forward" 3; Student Council 1, 2; Sgt.-at-Arms 1; Treasurer 2; State Vice-Pres. 2; State Cabinet 2; Football 1, 2; Basketball 1; Scholastic Society 2, 3; Projectionist 2, 3; Track 1; Hawk-eye Boys' State 2.

BARSTAD, SHERRILL: *Vocational.* "Y" 1, 2, 3; Future Teachers Club 2, 3; Band 1; Make-Up Crew 3; Pep Club 1, 2, 3.



BEALS, LARRY: *General*

BECKETT, BARBARA: *Vocational* "Y" 1; Orchestra 1, 2, 3; Orchestra Small Groups 1, 2, 3; Pep Club 1, 2, 3.

BEHLING, LEROY: Basketball 1.



BERGLOFF, LARRY E.: *College Prep.* Booster Club 2, 3; Football 1, 2, 3; H.R. Vice Pres. 2; Basketball 1, 2, 3; Photography 2, 3; Track 1.

BEST, ROBERT: *Clerical*

BLAESS, ELAINE: *Stenographic.* "Y" 1, 2, 3; Pres. 1; Sec. 2; Bumble "B" 1, 2, 3; Advertising Manager 3; Future Teachers 1, 2, 3; Glee Club 1; Speech Work 1; Make-Up Crew 1; Pep Club 1, 2, 3; Quill & Scroll 2, 3; Dolphin Club 2, 3; H.R. Sec. 3.



BOLLENBAUGH, LARRY: *Vocational.* Chorus Small Group 1, 2, 3; Booster Club 3; H.R. Pres. 1; Track 1.

BOLT, BARBARA: *General*

BOWES, FRED: *College Prep.* "Y" 3; Booster Club 2, 3; Football 2, 3; H.R. Sec. 2; Basketball 1; Projectionist 2, 3; Track 2.

BRAKLOW PAT: *College Prep.* "Y" 1, 2, 3; Future Nurses 1, 2, 3; Chorus 2, 3; Orchestra 1, 2, 3; Orchestra Small Groups 1, 2, 3; Pep Club 1, 2, 3; H.R. Pres. 2; H.R. Vice Pres. 1.

BRIGGS, CAROL: *College Prep.* "Y" 1, 2, 3; Treas. 2; Bumble "B" 2, 3; Collection Manager 3; Future Nurses 2, 3; Historian 3; Pep Club 1, 2, 3; Homecoming Attendant 3.

BROWER, KERIN: *General.* "Y" 1, 2; Scroll 2, 3; Student Council 2, Pep Club 2, 3; Scholastic Society 2, 3.



BRYANT, JIM: *General.* FFA 1, 2.

BULLOCK, RONALD: *College Prep.* "Y" 2, 3; "Best Foot Forward" 3; Booster Club 2, 3; H.R. Pres. 3; Basketball 2; Projectionist 3; Track 2.

BYERLY, RICHARD: *College Prep.* "Y" 1, 2, 3; Booster Club 2, 3; Football 1, 2, 3; Basketball 1, 2, 3; Projectionist 1, 2, 3; Track 1, 2, 3.

CASSERLY MARY: *Stenographic.* "Y" 1, 2, 3; Vice-Pres. 2; Bumble "B" 1, 2, 3; Future Nurses 1, 2, 3; Pep Club 1.

CHANCE, ROSEMARIE: *General.* "Y" 1, 2, 3; Sec. 1; Program Chairman 2; Pres. 3; Bumble "B" 2, 3; Sports Editor 3; Quill & Scroll 2, 3; Future Teachers 2, 3; Pres. 3; Pep Club 1, 2, 3; Historian 2; Basketball 1, 2, 3; Captain 2; Scholastic Society 1, 2, 3; Student Gov't. 2.

CLARKE, HELEN: *College Prep.* "Y" 1, 2, 3; Bumble "B" 2; Future Nurses 2, 3; Historian 2; Glee Club 1; Band 1, 2; Speech Club 1, 2; "The Robe" "Fog Island" 2; "Curious Savage" 2; Quill & Scroll 2, 3; Student Council 1; Pep Club 1, 2, 3; H.R. Pres. 1; Scholastic Society 1, 2, 3.





CLARK, ROBERT: *Vocational*. Football 1, 2, 3; Track 1, 3; Wrestling 1, 2, 3.

CLAUSEN, ANN: *College Prep.* "Y" 1, 2, 3; Bumble "B" 2, 3; Future Nurses 2; Student Council 1; Pep Club 1, 2, 3; Sec. 3; Quill & Scroll 2, 3; H.R. Sec. 2; Class Vice-Pres. 3; Basketball 1, 2, 3; Scholastic Society 1, 2, 3.

COFFMAN, BEVERLY: *General*. "Y" 3.

COGHLAN, LARRY: *College Prep.* Hi Y 2, 3; Speech 2; "Robe" 1, "Best Foot Forward" 3; Stage Crew 2; Debate 2; Booster Club 2; Basketball 1; Track 1, 2, Manager 2.

CONARD, RICHARD: *College Prep.* Chorus 3; Small Group 2, 3; Orchestra 1, 2; Band 1, 2; Small Group 1, 2; Booster Club 2, 3; H.R. Pres. 1; Swimming 1, 2.

CONN, JACQUELYN: *Vocational*. "Y" 3; Future Nurses 2, 3; Glee Club 1, 2, 3; Pep Club 1, 2, 3; H.R. Sec. 3; Basketball 1, 2, 3; Captain 3; Scholastic Society 1, 2, 3.



CORNELIUS, JOAN, *College Prep.* "Y" 3; Bumble "B" 2, 3; Pep Club 1, 2, 3; H.R. Sec. 1; Future Nurses 2, 3; Scholastic Society 1, 2, 3; Quill and Scroll 3; Basketball 1, 2, 3; Capt. 3.

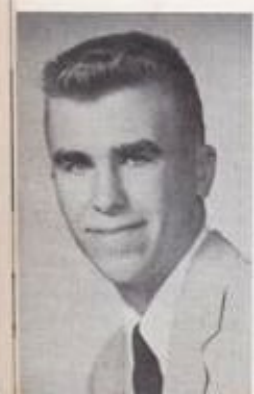
CROUSE, MARLENE: *Clerical*. Glee Club 1, 2, 3.

CURRIER, DIANNE: *Vocational*. Future Nurses 2, 3; Glee Club 1, 2, 3.

DAVIS, PATRICIA: *General*. "Y" 1, 2, 3; Pres. 1; Future Nurses 2, 3; Glee Club 1, 2, 3; Pep Club 1, 2, 3.

DEDE, DONALD: *Vocational*. Band 1, 2, 3; Small Group 3; Contest Work 3.

DUNCAN, FRANCES: *Vocational*. "Y" 2, 3; Glee Club 2, 3; Student Council.



ECCLES, DARREL: *College Prep.* Football 2; Basketball 1.

ECKHART, DUANE: *College Prep.* "Y" 2; Orchestra 1, 2, 3; Small Group 2, 3; Football 1, 2; Projectionist 2, 3; Track 1.

ELLIOTT, CHARLES: *Vocational*.

ELLSWORTH, MARIDITH: *Stenographic*

ELSBERRY, SHARON: *Stenographic*. "Y" 3; Chorus 3; Glee Club 1, 2; Pep Club 1, 2, 3; Magazine Staff.

ERICKSON, DELORES: *Vocational*. Photography 1.



EVANS, MARY: *College Prep*. "Y" 1, 2, 3; Sec. 1; Bumble "B" 2, 3; News Editor 2; Editor-in-Chief 3; Future Nurses 2; Future Teachers 2; Pep Club 2, 3; Recorder 3; Quill & Scroll 2, 3; H.R. Sec. 2; Scholastic Society 1, 2, 3.

FREDERICK, RUTH: *Clerical*. Chorus 2, 3; Glee Club 1.

GERMER, DELBERT: *Vocational*. Football 1, 2.

GIBBS, DAVID: *College Prep*. "Y" 2, 3; Sgt.-at-Arms 3; Orchestra 3; Band 1, 2, 3; Pres. 3; Small Group 1, 2, 3; Booster Club 2, 3; H.R. Pres. 3; Basketball 1, 2, 3; Track 1, 2, 3.

GLANTZ, CONLEY: *Vocational*.

GODFREY, DUANE: *Vocational*. Booster Club 2, 3; Football 1; Swimming 1; Track 1.



GORDON, JACK: *Vocational*.

GRANT, SUE: *College Prep*. "Y" 1, 2, 3; Pres. 2; Bumble "B" 1, 2; Sports Editor 2; Glee Club 2; Small Group 2; Pep Club 1, 2, 3; Pres. 3; Quill and Scroll 2; Dolphin Club 1, 2, 3; Cheerleader 1, 2, 3; H.R. Pres. 2; Homecoming Attendant 3; Scholastic Society 1, 2; Librarian 1, 2, 3; Class Sec. 2.

GRIFFITH, JULIE: *Stenographic*. "Y" 1; Orchestra 1, 3; Pep Club 1.

HAMILTON, JO ANN: *Stenographic*. "Y" 1; Orchestra 1, 2, 3; Band 1, 2, 3; Small Group 1; Pep Club 1, 2, 3; Scholastic Society 2.

HANDY, CARL: *College Prep*. Bumble "B" 1, 2, 3; Circulation Manager 2, 3; Chorus 2, 3; Glee Club 2, 3.

HANNUM, ANNE: *Stenographic*. Bumble "B" 1, 2; Pep Club 1.





HARDER, ROBERT: *College Prep.* "Y" 2, 3; Vice Pres. 3; Speech Club 1; Contest Work 2, 3; Booster Club 2, 3; Football 1, 2, 3; Basketball 1, 2, 3; Scholastic Society 1, 2, 3; Projectionist 1, 2, 3; Track 1; Golf 2, 3; Boys' State 2.

HARRINGTON, JOHN: *Clerical.* Bumble "B" and Scroll Photographer 1, 2; Chorus 1, 2, Glee Club 1; Small Group 1, 2; Student Council 1, 2, 3; Booster Club 2; Quill & Scroll 1, 2, 3; Basketball 1; Scholastic Society 1, 2; Photography 1, 2, 3.

HARVEY, MARGARET: *Vocational.* Glee Club 1, 2, 3.

HARVEY, RICHARD: *College Prep.* Orchestra 1, 2, 3; Band 1, 2, 3; Small Group 1, 2, 3.

HAUGE, MARY LYNN: *College Prep.* "Y" 1, 2, 3; Vice Pres. 1; Future Nurses 2, 3; Chorus 2, 3; Glee Club 1; Chorus Small Group 1, 2, 3; Orchestra 1, 2, 3; Small Group 1, 2, 3; Pep Club 1, 2, 3; H.R. Pres. 1.

HAWK, PHYLLIS: *General.* Future Nurses 3.



HAYES, RAYMOND: *General.*

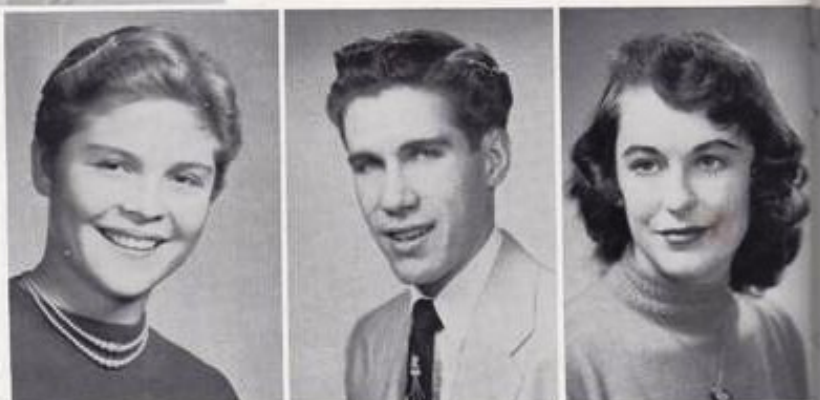
HEAPS, RUTH ANN: *Stenographic.* Glee Club 1, 2; Speech Club 1; Y.O.B. 1, 2, 3.

HERRON, MARY LEE: *College Prep.* "Y" 2; Future Nurses 3; Chorus 2, 3; Glee Club 1; Small Groups 2, 3; Band 1, 2; Pep Club 1, 2; H.R. Sec. 3.

HICK, SANDRA: *College Prep.* "Y" 1, 2, 3; Vice Pres. 3; Future Nurses 3; Vice Pres. 3; Orchestra 3; Band 1, 2, 3; Small Group 2; Band Sec. 3; H.R. Sec. 2; Basketball 2, 3.

HICKLE, DAVID: *Vocational.*

HICKS, BETTE: *General.* Glee Club 2, 3; "Curious Savage" 2; "Best Foot Forward" 3; Pep Club 2, 3; Dolphin Club 1, 2, 3; Basketball 1.



HOFFMAN, ARLISS: *General.* Bumble "B" 1; Scroll Advertising 2, 3; Future Nurses 1, 2, 3; Speech Club 1; Photography 3; Librarian 1, 2, 3.

HOWARD, KENNETH: *Clerical.* "Y" 1; Bumble "B" 1, 2; H.R. Pres. 1; Basketball 1, 2.

HULL, BILL: *Vocational.* Track 2, 3.

JOHNSTON, CHARLES: *Clerical*. Basketball 1; Projectionist 2, 3; Track 1.

JOHNSTONE, JERRY: *General*. "Y" 1, 2; Booster Club 2, 3; Pres. 3; Football 1, 2, 3; Basketball 1, 2; Golf 1, 2, 3.

JONES, LENNICE: *Stenographic*. "Y" 1; Future Teachers 2; Pep Club 1, 2, 3; H.R. Pres. 3.



KELLEY, RANDA LEE: *General*. Stage Crew 2.

KESTER, ROWENA: *General*.

KLINE, DELORES: *General*. "Y" 1; Make-Up Crew 1; Pep Club 1.

KLINKEFUS, ORLIN: *College Prep*. Chorus 1, 2, 3; Glee Club 1, 2, 3; Booster Club 2, 3.

KRUSE, DARRELL: *College Prep*. Scroll 2, 3; Co-Editor 3; Chorus 2, 3; Glee Club 2, 3; Small Group 3; Orchestra 1, 2, 3; Pres. 3; Small Group 3; Speech Club 2, 3; Pres. 2; Contest Work 2, 3; "The Robe" 1, "Curious Savage" 2; "Best Foot Forward" 3; Stage Crew 2; Student Council 2, 3; Treasurer 2; Booster Club 2, 3; Quill & Scroll 2, 3; Scholastic Society 2, 3; Class Pres. 3.

LARSON, JOYCE: *General*. "Y" 1, 2, 3; Scroll 1, 2, 3; Editor 3; Future Teachers 3; Chorus 1, 2, 3; Homecoming Attendant 3; "Curtain Going Up" Make-Up Crew 2; Speech Club 1; Choral Small Groups 1, 2; Dolphin Club 1, 2, 3; Girls' State 2.



LAWLESS, JAMES: *College Prep*. Band 1, 2; Booster Club 2; H.R. Pres. 3; Swimming 3; Basketball 1, 2; Tennis 2.

LONG, BARBARA: *College Prep*. Future Nurses 2, 3; Sec. 3; Chorus 1; Glee Club 2; Orchestra 2, 3; Band 1, 2, 3; H.R. Pres. 3.

LONG, BEVERLY: *General*. "Y" 1, 2, 3; Bumble "B" advertising 2; Future teachers 2; Pep Club 1, 2, 3; H.R. Secretary 1.

LONGHENRY, MARTIN: *General*. FFA 1, 2, 3.

LOVELESS, JUDY: *College Prep*. "Y" 1; Chorus 2, 3; Glee Club 1; Small Group 1, 2, 3; Orchestra 1, 2; Small Group 1; H.R. Vice Pres. 1; H.R. Sec. 2.

LOW, GARY: *General*. FFA 2, 3; Sentinel 2; Vice President 3.





MADDEN, LARRY: *General*. Booster Club 2, 3; H.R. President 1; Basketball 1; Track 2, 3.

MANRIQUEZ, JAMES: *General*. Student Council 1; Football 1, 2, 3; Basketball 1; Track 1, 2, 3.

MANRIQUEZ, JOHN: *General*. Football 1, 2; Basketball 2; Track 2, 3.

MARTIN, ALBERT: *General*.

MARTIN, DANIEL C.: *General*. Chorus 1, 2, 3; Glee Club 1, 2, 3; Ogden Band 1; Ogden Band Small Groups 1; "Our Town" 2; Booster Club 3; Ogden FFA 1, 2; Photography 1, 2; President 2; Ogden Basketball 1, 2.

MARTIN, HAZEL: *General*



MARTIN VIRGINIA: *Stenographic*. Glee Club 1, 2; Y.O.B. 1, 2, 3; Treas.

McCALL, BARBARA: *College Prep*. "Y" 1, 2, 3; Bumble "B" 1, 2; Future Nurses 3; Pep Club 1, 2, 3; Dolphin Club 1, 2, 3; H.R. Sec. 2.

McCAMBRIDGE, JAMES: *General*.

McCOY RICHARD: *College Prep*. "Y" 2, 3; Chorus 1, 2, 3; Small Group 1, 2, 3; Orchestra 1, 2, 3; Small Group 1, 2, 3; Band 1, 2, 3; Booster Club 2, 3; H.R. Pres. 2; Scholastic Society 1, 2.

MILLER, ALBERT: *Vocational*. Booster Club 3; Football 2, 3; Stage Crew 3.

MILLER, CARROLL: *General*



MILLER, JAMES: *Vocational*. Swimming 3; Track 3.

MILLER, MARY: *Stenographic*. Glee Club 2, 3.

MILLER, THOMAS: *College Prep*. "Y" 2, 3; Sec. 3; Booster Club 2, 3; Sec. 3; Basketball 1, 2, 3; Projectionist 2, 3; Tennis 2, 3.

MISHLER, MARY JANE: *Clerical*. H.R. Sec 2; Librarian 1.

MOELLER, MARY ANN: *Vocational*. Orchestra 2, 3; Band 1, 2, 3; Small Group 2, 3;

MURKEN, DARYL: *General*. "Y" 2, 3; Sergeant-at-Arms 2; Pres. 3; Chorus 2, 3; Glee Club 2, 3; Small Group 3; "The Robe" 1, "Curious Savage" 2; Make-Up Crew 2; Student Council 2; Vice President 2; Sgt.-at-Arms 2; Booster Club 2, 3; FFA 1, 2, 3; Reporter 1; Pres. 2, 3; District Sec. 3; Football 1, 2, 3; H.R. Pres. 1, 3; Class Treasurer 2.



MOWRER, RAWLEIGH: *College Prep*. "Y" 3; Booster Club 2, 3; Projectionist 2, 3.

NAREY, KATHERINE ANN: *Stenographic*. "Y" 2, 3; Scroll 2, 3; Glee Club 2; Student Council 2, 3; Pep Club 1, 2; H.R. Pres. 1; Class Sec. 3.

NEELY, JANICE: *Clerical*.

NELSON, KAE: *College Prep*. Glee Club 1, 2, 3; Orchestra 1, 2, 3.

NELSON, MERLE: *College Prep*. Chorus 2, 3; Glee Club 2, 3; Orchestra 1, 2; Band 1, 2; Small Groups 1, 2; "The Robe" 1; Booster Club 2, 3; Football 2, 3; Basketball Manager 1, 2, 3; Projectionist 2; Track 1, 2; Y.O.B. 1, 2, 3.

NEWLAND, RHODA: *Vocational*. "Y" 1, 2, 3; Future Nurses 2, 3; Chorus 1, 2, 3; Small Group 1; Pep Club 1, 2, 3.



NORDSTROM, KAREN: *College Prep*. H.R. Sec. 2; Librarian 2.

NYSTOM, DONALD: *General*. FFA 1, 2, 3; Reporter 2; Treasurer 3.

OHLMANN, JOYCE: *Clerical*. "Y" 2, 3; Chorus 1, 2, 3; Small Groups 1, 2, 3; Stage Crew 1; Librarian 3.

PEPPLES, THEODORE: *Vocational*. Booster Club 3; Track 3.

PESTOTNIK, BONNIE: *College Prep*. "Y" 1; Future Nurses 3; Chorus 3; Glee Club 1, 2; Small Group 1, 2; Orchestra 1, 2, 3; Band 1, 2, 3; Small Group 2, 3; Pep Club 1; H.R. Sec 1; Scholastic Society 1, 2, 3; Stage Crew 1, 2, 3; Librarian 2.

PETERSON, GORDON





PETERSON, JAY HERBERT: *College Prep.* Student Council 3; Vice Pres. 3; Football 1, 2, 3; H.R. Pres. 2; Basketball 1, 2, 3; Projectionist 2; Track 1, 2, 3.

PHAROAH, JERALD: *General.*

PIKE, WILLIAM: *Vocational.* Booster Club 2, 3; Stage Crew 2.

PRINE, BETTY: *Commercial.*

RAETTIG, JUDY: *Stenographic.* "Y" 1; Chorus 3; Glee Club 1, 2; Stage Crew 1, 2; Y.O.B. 1, 2.

REED, THOMAS: *College Prep.* Booster Club 2, 3; Swimming 1, 2, 3; Projectionist 3; Track 3.



REEDHOLM, ELNA: *Stenographic.* "Y" 1, 2, 3; Dolphin Club 1, 2, 3; Pres. 3; H.R. Pres. 1; Homecoming Queen 3; Scholastic Society 1, 2; Class Sec. 1.

REEDHOLM, SONJA: *General.* "Y" 1, 2, 3; Sec. 1; Treas. 2; Future Teachers 2, 3; Vice Pres. 3; Chorus 2, 3; Glee Club 1; Small Group 1, 2; Orchestra 1, 2, 3; Pep Club 1, 2, 3; Dolphin Club 1, 2, 3; Cheerleader 2, 3; H.R. Pres. 2; Homecoming Attendant 3.

REITZ, GLORIA: *Stenographic.* Chorus 3.

REYNOLDS, ALLAN: *General.*

REYNOLDSON, KAREN: *General.*

RINEHART, JOLEEN: *General.* "Y" 2, 3; Future Teachers 2; Make-Up Crew 2, 3; Student Council 1; Pep Club 1; H.R. Sec. 3.



ROBEY, MARION ARTHUR: *General.* Chorus 1, 2, 3; Glee Club 1, 2, 3; Small Groups 1, 2, 3; Contest Work 1, 2, 3; "Best Foot Forward" 3; Booster Club 2, 3; FFA 1, 2, 3; Reporter 3.

ROBY, MARIE: *Stenographic.* "Y" 1; Future Nurses 2; Chorus 2; Glee Club 1; Pep Club 1, 2, 3; Basketball 2, 3; Scholastic 1, 2, 3; Make-Up Crew 2, 3.

ROBY, RUSSELL: *College Prep.* Scholastic Society 1, 2, 3; Projectionist 2.

SAWYER, CHARLOTTE: *General*. "Y" 3; Future Nurses 2; Student Council 3; Pep Club 1, 2.

SAYLOR, PATRICIA ANN: *Stenographic*. "Y" 1, 2, 3; Scroll 3; Future Teachers 3; Vice Pres. 3; Chorus 2; Make-Up Crew 1; Pep Club 1, 2, 3; H.R. Sec. 1; Roosevelt; Girls Club 1, 2.

SCHROEDER, DONALD: *Vocational*. "Y" 1, 2, 3; Booster Club 2, 3; Football 1, 2, 3; Basketball 1, 2; Track 1, 2.



SCOTT, GARY: *Vocational*. Stage Crew.

SELLERS, ROBERT: *College Prep*. "Y" 2, 3; Booster Club 2, 3; Football 1, 2, 3; Projectionist 1, 2.

SESKER, MARLENE: *Stenographic*. "Y" 3; Future Nurses 3; Chorus 3; Glee Club 2; Small Groups 2, 3; H.R. Sec. 3.

SHUEY, KENNETH: *Clerical*. Chorus 3; Glee Club 2, 3; "The Robe" 1; "Best Foot Forward" 3; Booster Club 2, 3; Football 2, 3; Basketball 1; Swimming 3; Projectionist 2, 3; Track 1, 2, 3.

SHUEY, LOIS: *Clerical*. "Y" 1; Glee Club 1, 2, 3; Small Group 2; "Best Foot Forward" 3.

SHUEY, WALTER: *Vocational*. Booster Club 2, 3; Football 1, 2, 3; Basketball 1; Track 1, 2, 3.



SINCLAIR, ELIZABETH: *General*.

SINCLAIR, JANICE: *General*. "Y" 3; Bumble "B" 1; Speech Club 1; Stage Crew 2.

SMITH, GERALD: *College Prep*. "Y" 2, 3; Booster Club 2, 3; Basketball 1; Projectionist 2, 3; Golf 1, 2, 3.

SMITH, KEITH: *College Prep*. Scroll 2, 3; Quill & Scroll 2, 3; Scholastic Society 2, 3.

SMITH, RONALD: *General*.

SOWLE, SHARI: *General*. Bumble "B" 2, 3; Feature Editor 3; Speech Club 1; "Curtain Going Up" 1; "Fog Island" 2; "Best Foot Forward" 3; Photography 2.





STEFFY, HAROLD: *General*, Booster Club 3.

STRICKLER, JAMES: *Vocational*, Track 1.

SWAIN, WAYLAND: *College Prep.* "Y" 1, 2, 3; Scroll 1, 2, 3; Small Group 1, 2, 3; Chorus 1, 2, 3; Glee Club 1, 2, 3; Small Group 1, 2, 3; Contest Work 1, 2, 3; "Curtain Going Up" 1; "Best Foot Forward" 3; Quill & Scroll 1, 2, 3; Tennis 2.

THACKER, STANLEY: *Vocational*

THEDE, ROBERT: *General*.

WALTERS, GERALD: *General*



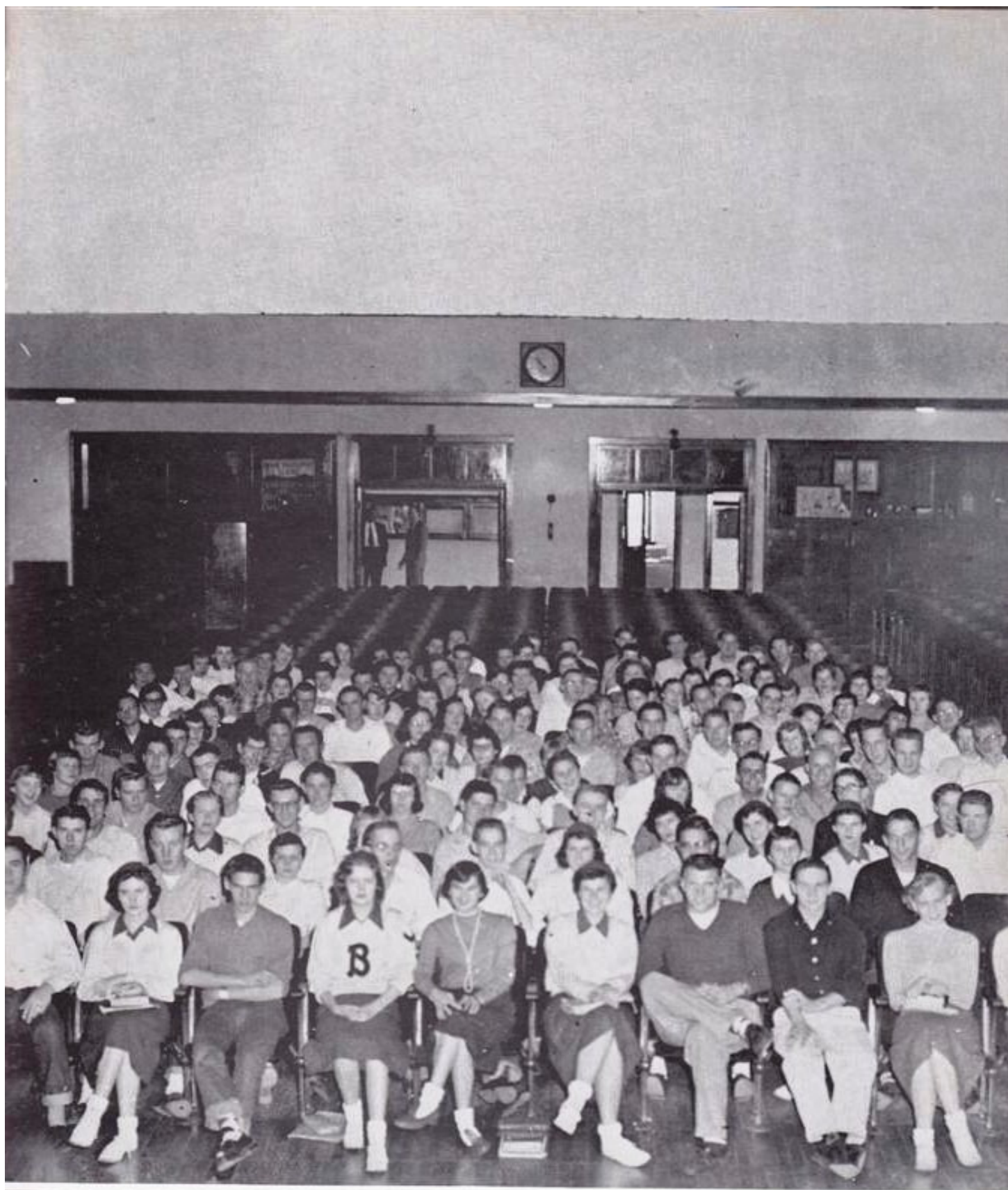
WEBER, LARRY: *Clerical*, Booster Club 2, 3.

CLASS COLORS:
Orchid and White

CLASS FLOWER:
Orchid-tinted Carnation



MISS LINDERBLOOD, *Class Sponsor*



Congratulations, Seniors
GOODYEAR SERVICE



We're trying our hand at this poem.
We don't know how it will come out.
There are many more we could mention
Of that there is no doubt.

Joyce L. edited this book
With the help of all of the rest.
We know you'll enjoy this Scroll
And agree that it's the best.

To edit the Bumble "B,"
Mary E. had lots to do.
Of course we can't forget
All the help from the rest of the crew.

At basketball J. Rich, and Berg
Were really great to see.
Romey, Marie, Jackie and Joan
Were as good as guards can be.



Congratulations, Seniors
TOWLE'S JEWELRY



Leading all the cheers
Were Sonja, Kork and Sue,
And with the help of the Pep Club
Our team usually came through.

At swimming Tom had speed.
At diving Wally was best.
And our team was really something
With the help of all the rest.

With Jim at the head of the council,
And Darrell at the head of the class,
And Kay and Ann to help them,
How smoothly the year did pass.

We hope that in these verses
Our point is driven home.
For these, you see, are the
Illustrious words of our class poem.





Abrahamson, Fern
Adreon, Frank
Anderson, Larry



Appenzeller, Robert
Atherton, Barbara
Bender, David

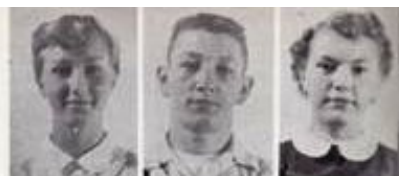


Bergloff, Teddie
Bloomquist, Dennis
Bohlen, Karen



Brannon, Jack
Brower, Nancy
Brown, Bob

Deal, Hazel
Dearing, David
Dennis, Karen



Disbrowe, Larry
Ellsbury, Darwin
Elsberry, Roswald



Elsberry, Roswel
Ellsworth, Cornelia
Ely, Gary



Ely, Loren
Ewing, Jon
Ferguson, Karen



Junior



Burke, Larry
Cannon, Judy
Carpenter, Margaret



Chance, Sandra
Clark, Neal
Clarke, Joyce



Cole, Betty
Comstock, Ronald
Cook, Lee



Craven, Donna
Dahlin, Leland
Davis, Marland

Ferry, Mike
Fisher, Jay
Flannery, Michael



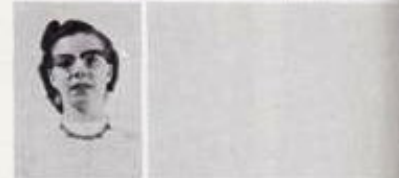
Flockhart, William
Forster, Carol
Free, Marlene



Gibson, Audrey Lou
Gibson, Sharon Lou
Godfrey, Derold



Gregory, Mildred



Not pictured: Atherton, Sandra; Boon, Veeny; Carter, Shirley;
Chadwick, Rex; Eastberg, Mervyn; Frazier, Paul; Germer, Elaine;
Green, Lavone.

This page is sponsored by
SCHOREDER'S FUNERAL HOME



Hamilton, Robert
Hasstedt, Joyce
Hasstedt, Mary Ann



Hicks, Richard
Hines, Shirley
Hora, Denny



Hull, Clyde
Houston, Judy
Howe, Marjorie



Jackson, Larry
Jackson, Sharon
Jacobi, Joanne

Land, Larry
Lainson, Tommy
Lindahl, James



McAlpine, Edward
McBirnie, Janice
McCambridge, Nancy



McElyea, Betty
McNaughton, Diana
McVicker, Larry



Menough, Jerry
Meyers, Larry
Mishlove, Joan



Class



Jennings, Evanne
Johnson, Patty
Jones, Susan



Josephson, Keith
Kendall, Ronald
Knezevich, Michael



Kirk, Carolyn
Koppenhaver, Barbara
Land, Janet

Moorman, Janice
Morgans, Harvey
Mudge, Patricia



Musser, Charles
Narey, Barbara
Nelson, David



Newbold, Mike
Newcomb, Jack
Ohge, Larry



Otto, Betsy
Parkinson, Keith



Not pictured: Guenther, Raymond; Henry, Daniel; Jacobson, Marvin; Jones, Barbara; Jones, Edna; Josephson, Ruth; Kiddie, Rose Marie; Moeller, Janet; Morris, Helen; Oppedahl, Lloyd.

Class Sponsor, MRS. WILLIAMS



Parrish, Sandra
Pesek, Marilyn
Peterson, Gloria



Peterson, Laverne
Petty, Barbara
Platter, Janet



Pritchard, Marjorie
Ray, Richard
Reed, Ronald Lee



Reedholm, Dorothy
Richmond, Gary
Richmond, Sandra

Smith, Donald
Snyder, LaVerne
Spurgeon, Stephen



Stephenson, Caroline
Sternquist, Donald
Stevens, Donald



Stevens, Janice
Stolte, Ronald
Stumbo, Mary Jane



Swain, Lyla
Taylor, Jim
Tompkins, Morgan



Juniors



Rinker, Richard
Roberts, William
Robertson, John



Robertson, Tom
Rogers, Wayne
Rose, Roxanne



Ross, Betty Lou
Ross, Carol Ann
Schmickley, Dennis



Schoff, Evelyn
Selim, Sherwood
Sellers, Larry

Tonsfeldt, Suellen
Trulin, Paula
Vitt, Fred



Weir, Marlene
Westberg, Charles
Weyer, Geraldine



Weyer, Larry
Wilcox, Donald
Wiley, Marilyn



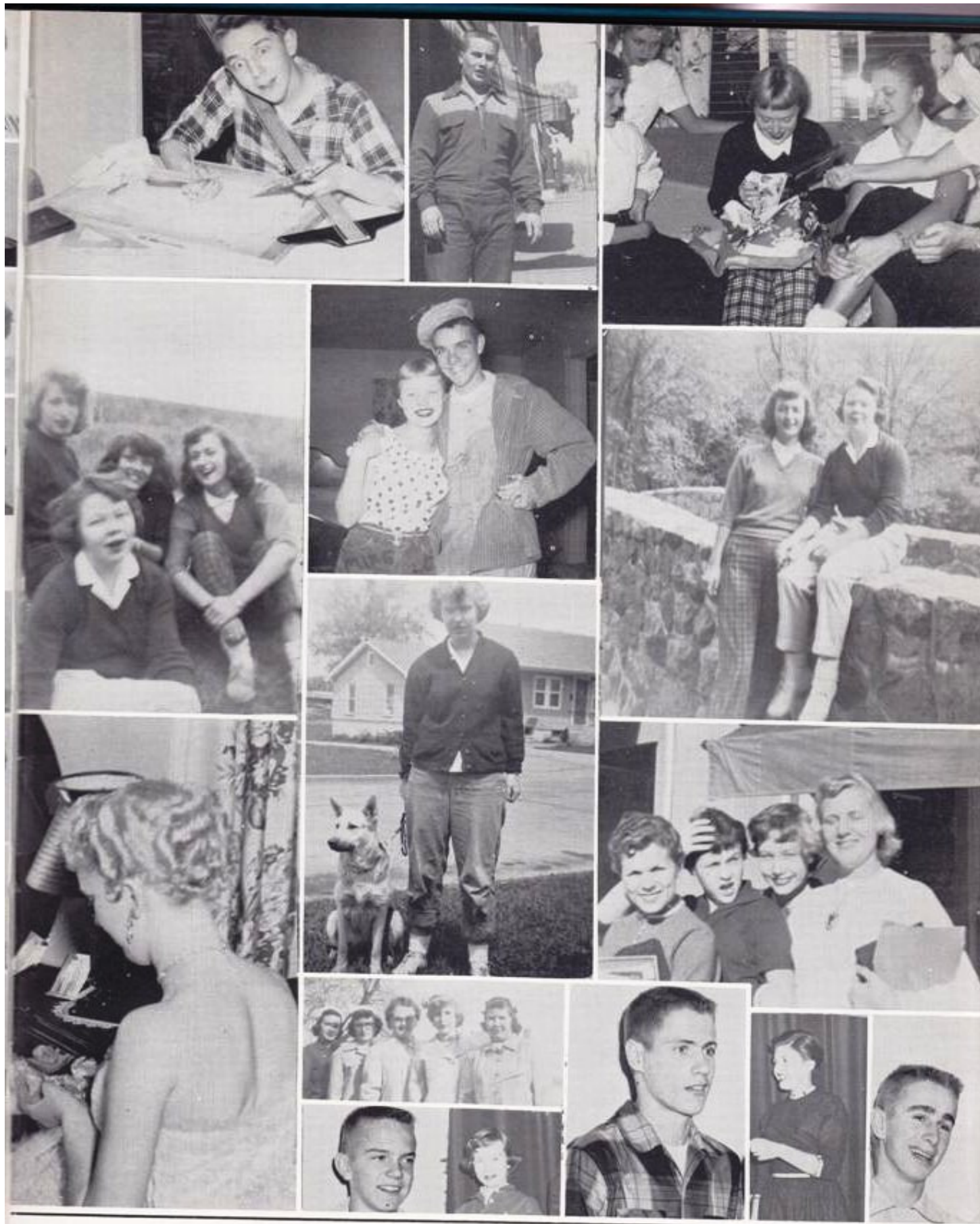
Williams, Bruce
Williams, Jon
Wood, LeRoy



Wright, Kay
Young, Dick



Not pictured: Roberts, James; Runyan, John; Sparks, Jo Ellen; White, Richard; Wilhite, Richard.



This page is sponsored by
BOONE DAIRY



Abrahamson, Jon
 Ades, Carolyn
 Anderson, Larry Paul
 Askland, Ruth
 Aspengren, Victoria
 Barger, Carol
 Bass, Karen
 Berglund, Jerry
 Bergloff, Pauline
 Blaskey, Harold
 Boersma, Larry
 Bray, Virginia

Brower, Keith
 Browning, Donna
 Bush, Barbara
 Capps, Carla Ann
 Chinstedt, Priscilla

Clark, Jayne
 Coffman, Jack
 Coleman, John
 Combs, Wesley Joe
 Cook, Gary

Sophomore



Cox, Larry Dean
 Cross, Donald
 Craven, Gene
 Crumbaugh, Sharon
 Cryder, Larry
 Culberson, Karen
 Curran, Patricia

Currier, Thomas Lee
 Davidson, Karen
 Davidson, Ronald
 Dearborn, Don
 Dodd, Douglas

Duffy, Diane
 Dutton, Karen
 Eastberg, Judy
 Eccles, Richard
 Eckstein, George

Eklund, Wanda
 Eldien, Daniel
 Elliott, Dennis
 Elsberry, Dale

Not pictured: Bass, Judith; Blum-
 berg, Gary; Caywood, Diana; De-
 Voogd, Fred; Flockhart, Donald.

Frazier, Loren
 Garner, Beverly
 Germer, Barbara
 Gibbons, Janice
 Gilliam, Nancy
 Gilliam, Richard
 Goeppinger, Hans
 Grady, Etta Mae
 Gragg, Ray
 Guenther, Janet
 Gumtau, Janice
 Hamilton, Richard

Hansen, Beverly
 Hanson, Judy
 Harris, William
 Herman, William
 Hicks, Gerald



Hinz, Mary E.
 Hoffman, Janice
 Hopkins, Linda
 Houseman, Donald L.
 Howell, Larry

Class

Hughes, Marilyn
 Hunter, Richard
 Hutson, Richard
 Hyatt, Mike
 Kelly, Jack
 Keys, Barbara
 King, Mildred

Knight, Dean
 Knight, Roger
 Knudson, David
 Dost, John
 Kristianson, Lois

Lee, Glen
 Langmade, Jack
 Loveless, Karen
 Lincoln, Betty
 Lind, Jerry



Not pictured: Harris, Gary; Howard, Rita; Johnson, Gary; Johnson, Jim; King, Paul.

Lindemann, Vera
 Long, Richard
 Longhenry, Anna
 Lorentzen, Betsy



Louk, James
Malcolm, Judith
Martin, Susan
Martin, Kenenth
Masters, Richard
Maynard, Glen
McGee, John

McLeod, Douglas
McGee, Larry
Miller, David
Miller, Gerald
Miller, Marilyn

Mondt, Eddie
Moran, Richard
Morello, Irent
Morgan, Doris Jean

Morris, Lois
Muench, La Moile
Musser, Robert
Mustapha, Karen Rae
Neely, Daniel

Sophomore



Nelson, Barbara
Nelson, Myra Ann
Nelson, Rosalie
Newland, Jerry
Norton, Alan
Olander, Larry
Overbeck, Judith

Paris, Phyllis
Parisho, Judith
Parks, Jacqueline
Pestotnik, Moreen
Pestotnik, Thomas

Peterson, Donald
Peterson, Joyce
Phipps, Douglas

Pollard, Joy
Price, Gale
Pritchard, Thomas
Rans, Laurel
Reinhardt, Chester

Not pictured: Lyon,
Sharon; Michels,
Joyce; Miller, Shirley;
Nygren, Laura; Oppen-
dahl, Iver; Raettig,
Gail.

Rinehart, Joanne
 Roeder, Alan
 Russell, Mary
 Schell, Billy
 Schroeder, Larry
 Sebring, David
 Sharp, Robert
 Siegler, Daniel
 Siders, Larry
 Sinn, Gary
 Smiley, Jerry
 Sparks, Charles



Springer, Janice
 Springer, Joyce
 Standley, Phillip



Starnes, Marlowe
 Stehn, James
 Stiles, Charlotte
 Stotts, Harold
 Stotts, Larry



Class

Stotts, Joan
 Strandberg, Gene
 Sturtz, Jolene
 Swain, Howard
 Tilley, Sharon
 Tohill, Bruce
 Toot, Karen



Trulin, Karen
 Van Fleet, Shirley
 Von Krog, Rodney
 Vogler, Loren
 Werner, Susan



White, Richard
 Wiemer, Mary
 Williams, David



Not pictured: Richards,
 Charles; Wilhelm, Mar-
 garet.

Williams, Howard
 William, Karen
 Wills, Barry
 Winters, Donald
 Wright, Jerry



COCA COLA BOTTLING COMPANY

is responsible for this page.



Sponsoring this page is
WILSON'S TRANSFER AND STORAGE COMPANY



Class



Officers



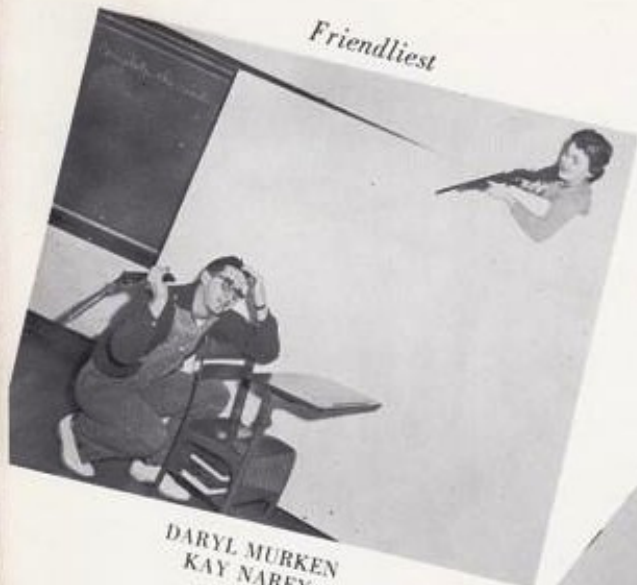
This year the senior class of Boone High elected as their president, Darrell Kruse; Ann Clausen was elected vice president; and Kay Narey, secretary.

Class officers for the junior class were Daryl Trulin, president; Richard Rinker, vice president; JoEllen Sparks, secretary; and Dave Nelson, Treasurer.

The sophomore class officers were as follows: Paul King, president; with Dennis Elliott serving under him as vice president; and as secretary, Karen Toot.

Under the capable leadership of these people we are sure to get a better insight into the problems of tomorrow.

Friendliest



DARYL MURKEN
KAY NAREY

Wittiest



WAYLAND SWAIN
HELEN CLARKE

Best



All
JOYCE LARSON
JIM ANDERSON

Around

Biggest



DON SCHROEDER

Shyest

CHARLENE ANDERSON
JIM MILLER



Best Looking
RICHARD BYERLY
ELNA REEDHOLM

CONGRATULATIONS . . .

Best Personality



SUE GRANT
KENNEY HOWARD

Most Athletic



ROMEY CHANCE
J. PETERSON

Flirts



SONJA REEDHOLM

Most



BOB BARRY
BONNIE PESTOTNIK

Intelligent



Most Talented
CARYL ACHENBACH
RICHARD ALBER

Most Likely To Succeed
DARRELL KRUSE
MARY EVANS

Senior Class Will

We the Boone High Senior Class of 1956 being of sound mind do bequeath to the class of 1957 the success and happiness we have had while we were seniors. Our individual wills are as follows:

Joyce Larson leaves her success as an editor to her successor in the class of 1957.

Wally Arringdale and Rawleigh Mowerer leave their technical ability to all future radio students.

Sue Grant and Korky Ballard leave their cheerleaders' uniforms to Jo Sparks and Betty McElyea with high hopes they have as successful a year in '57.

Bob Harder and J. Peterson leave their football ability to Larry Meyers and Jack Brannon.

Elna Reedholm leaves her Homecoming Queen's crown to the Queen of the class of '57.

Romey Chance and Joan Cornelius leave their basketball ability to Etta Mae Grady and Judy Malcom.

Ann Clausen leaves her chemistry notes to anyone who can use them.

Larry Coghlan and Ronnie Bullock leave by the nearest exit.

Jerry Johnstone leaves his pink slacks to Fred Vitt to play golf in.

Daryl Murken leaves his Hi-Y gavel to his successor.

Jim Anderson leaves to Dick Rinker his book entitled "How to Get Along With Women."

Caryl Achenbach leaves Carolyn Kirk her musical ability.

Dick Conard wills to Dick Hicks his can with hopes he can keep it on the road.

Bob Barry and Darrell Kruse will their intellectual genius to Keith Josephson and Carolyn Kirk.

Helen Clarke wills her *Green Gander's* to anyone who likes high-class literature.

Richard McCoy leaves his bass viol to Gloria Peterson along with his position in all-state orchestra.

The Senior Class of '56 says so-long to the faculty and thanks for the memories.

