

Scroll

48

The
1948 Scroll

Published by
The Senior Class
of
Boone High School

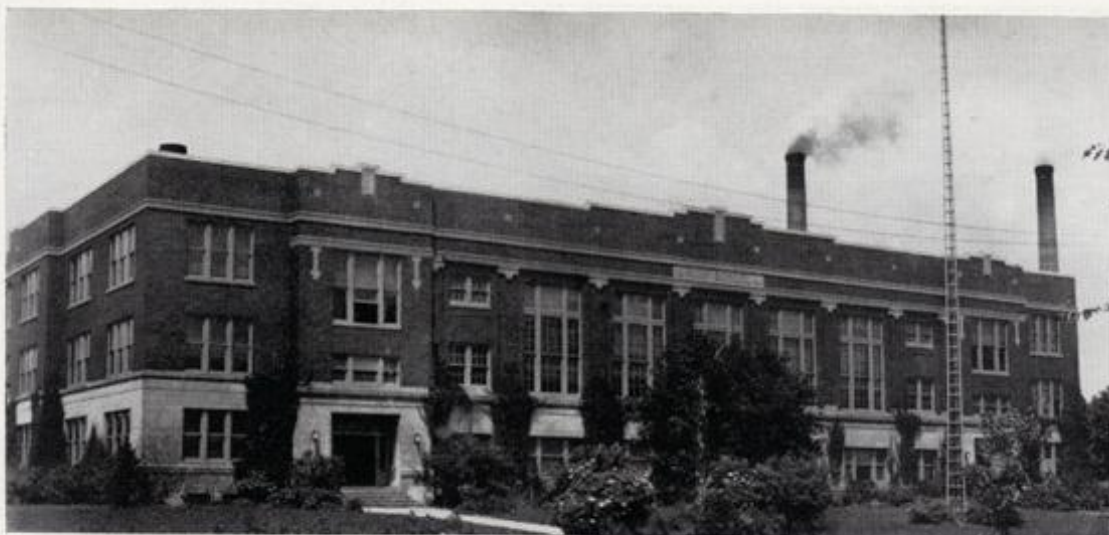
Dedication

*" 'Tis education forms the common mind:
Just as the twig is bent the tree's inclined. "*

—Pope

FOR centuries it has been recognized that the ideas and knowledge acquired during youth determine one's later life.

Today, more than ever, education is considered the most important factor in our lives. It is in our schools that we learn to co-operate, to respect the opinions of others, to become good citizens, and to acquire information and skills which will be useful to us always. And because we are grateful for the happy, worthwhile hours spent within these walls, we dedicate this 1948 Scroll to Boone High School.



*We, the Students of Boone High,
have tried to...*

BACK OUR SCHOOL and all its activities,
and interests.

HOLD HIGH its standards as individ-
uals, groups, teams and classes.

SEPARATE the worthwhile from the
worthless in order that we may be-
come valuable citizens in our
community, state and nation.

Boone High

TOP ROW: Miss Adeline Nelson, secretary; Mr. A. B. Grimes, superintendent; Miss Louise Benson, secretary; Mr. D. F. Seaton, principal; Mrs. Jean Van Ness, secretary.
SECOND ROW: Mr. Frank O'Connor

and Miss Vaughn Thornburgh, advisers; Mr. Jack Tillson, librarian; Mrs. Marie Ick, library supervisor; Mrs. Carolyn Carlson, nurse.
BOTTOM ROW: Fine Arts: Miss Josephine Hultquist, Mr. Konrad Scholl,

Mr. John Green, Miss Alberta Simon, Physical Education; Mrs. Betsy McCosh, Mr. Vernon Eislager, Mr. Howard Stutzman, Mr. Lawrence Baldus, Mr. Frank O'Connor, Miss Helen Emons.



School Faculty

TOP ROW: Social Studies: Mr. L. A. Gluekin, Mr. J. R. Thorngren, Miss Frieda Pagel, Miss Marguerite Skilling, Miss Ethel Whitney, Commercial: Mr. Morgan Thomas, Miss Jane Ealy, Mrs. Margaret Gluekin, Mr. William Hartley.

SECOND ROW: Arts and Crafts: Mr. Noel Jones, Mrs. Helen Absber, Mr. A. H. Lein, Mr. Edgar Lancaster, Mrs. Helen Brunner. Language: (standing) Mrs. Isabel Taylor, Mrs. Marjorie Thomas, Miss Adabelle Hilgenberg, Mrs. Zoe Stevens; (seated)

Miss Louise Linderblood, Miss Grace Slosson. BOTTOM ROW: Science: Mr. Joseph Klinsky, Mr. Howard Stutzman, Miss Rena Liddell, Mr. H. L. Cunningham. Mathematics: Miss Naomi Hicks, Miss Grace Rowleson.



SENIORS

MOTTO—We finish to begin.

COLORS—Red and white.

FLOWER—Red rose.

OFFICERS

President, Charles Moss

Vice-President, Marshall King

Secretary, Marie Swank



Moss, Swank, King

Graduates 1948



ABBOTT, KATHRYN, Stenographic: Drum Majorette 3 . . . AITCHISON, JOYCE, General: Mixed Chorus 1; Girls' Glee Club 1; Dramatics 3 . . . ANDERSON, DEBORAH, General: Girls' Glee Club 1; Declamatory 2, 3; D.D.T. Club 2; Dramatics 1, 3; Home Room Secretary 3; B-Y-Ettes 1, 2; Hi-Tri 2, 3; Art 1, 2; Scroll 3 . . . ANDERSON, GERALD, Scientific: D.D.T. Club 2; Hi-Y 3 . . . ANDERSON, ROGER, Arts and Crafts.

ARRINGDALE, JERRY, General: Football 1, 2, 3; Basketball 1, 2, 3; Track 2; Baseball 1; Mixed Chorus 1, 2, 3; Madrigal Group 1; Boys' Glee Club 2, 3; Quartet 3 . . . ASPENGREN, VELMA, General: Girls' Glee Club 1, 2; Jordan Girl Reserves 1 . . . ATKINSON, DONALD, Scientific: Basketball 1; Track 2 . . . BAKER, J. UVERN, Scientific: Football 1, 2; Track 1; Student Council 1; National Honor Society 3 . . . BARQUIST, JOYCE, Stenographic: Basketball 1, 2, 3; Bumble "B" 2, 3; Scroll 3; Mixed Chorus 1; Pep Club 2, 3; B-Y-Ettes 1, 2; Hi-Tri 2, 3; "Penrod."

BARROW, DOROTHY, General: Dramatics 1; Pep Club 3; Student Council 1; B-Y-Ettes 1, 2; Hi-Tri 3 . . . BARROW, ROBERT, General: Football 2, Manager 1 . . . BECKER, JAMES, Scientific: Mixed Chorus 1, 2, 3; Boys' Quartet 2, 3; Boys' Glee Club 3; Dramatics 2, 3; Hi-Y 3; P. A. System 2, 3; Movie Operator 2, 3; "Penrod" . . . BERGENDAHL, GENE, Vocational . . . BERGLUND, PATRICIA, General: Bumble "B" 1, 2, 3; Scroll 2, 3; Quill and Scroll 2, 3; Mixed Chorus 1, 2, 3; Girls' Glee Club 1, 2; Girls' Sextette 1, 2, 3; Trio 3; Mixed Quartet 2; Madrigal Group 1; All-State Chorus 3; Dramatics 1, 2, 3; Pep Club 1, Historian 2, President 3; National Honor Society 2, 3; B-Y-Ettes 1, 2; Hi-Tri 2, Secretary 3.

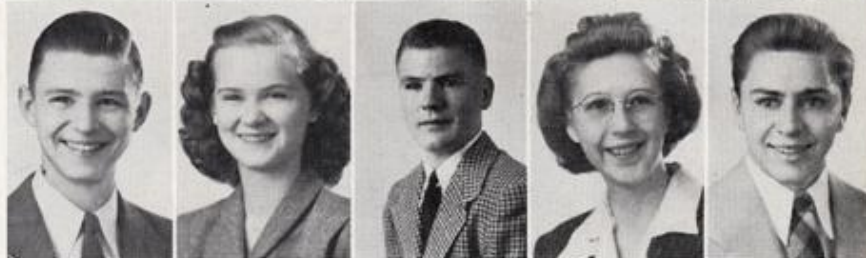
BICE, MARY LOU, Stenographic: Bumble "B" 2, Feature Editor 3; Scroll 2, Editor-in-chief 3; Quill and Scroll 2, 3; Declamatory 1, 2, 3; "Snafu"; "Sparkin'"; "The Vallant"; Pep Club 2, 3; National Honor Society 3; Home Room Secretary 3; B-Y-Ettes 1, 2; Hi-Tri 2, 3 . . . BLANCHARD, DONNA, Stenographic: Bumble "B" 1, 2, 3; Scroll 2, 3; Quill and Scroll 2, President 3; Girls' Glee Club 1; D.D.T. Club 2; Pep Club 3; Student Council 2; National Honor Society 2, 3; B-Y-Ettes 1; Hi-Tri 2, 3; Stage Crew; "Balcony Scene" . . . BRAINARD, BARBARA, Stenographic: Scroll 2, 3; Quill and Scroll 2, 3; Girls' Glee Club 1, 2, 3; B-Y-Ettes 1, 2; Hi-Tri 2, 3; "Balcony Scene" . . . BROWN, GENE, Scientific: Football 1, 2, 3; Track 1, 2, 3; Hi-Y 2, 3; Student Council 3 . . . BURKHART, GLENNA, Stenographic: Girls' Glee Club 1.

BUTLER, BENJAMIN, General: Student Council 1, 2 . . . BUTLER, WANDA, General: Mixed Chorus 1; Girls' Glee Club 1; Dramatics 1, 2; Pep Club 1, 2; Home Room Secretary 1, 2; B-Y-Ettes 1 . . . CAFFEY, LEE, Scientific: Swimming Team 3; Golf 1, 2, 3; Hi-Y 3; "Penrod" . . . CASE, ROBERT, General: Football 1, 2, 3; Basketball 1, 2, 3; Track 1, 2, 3; Baseball 1; Home Room Secretary 1; Hi-Y 2, Secretary 3 . . . CLARK, BETTYJOY, General: Home Room Secretary 3.

CLARK, MARILYN JO, General: "Date with Judy"; "Snafu"; Pep Club 2, 3; B-Y-Ettes 2, 3; Hi-Tri 2, 3; Declamatory 3; "Penrod".
 CLARKE, DOROTHY, Stenographic: Bumble "B" 1, 2, Editor-in-Chief 3; Scroll 2, 3; Quill and Scroll 2, 3; Mixed Chorus 1, 2; Girls' Sextette 1, 2; Madrigal Group 1; D.D.T. Club Vice-President 2; Pep Club 1, 2, 3; National Honor Society 2, 3; Junior Class Secretary; B-Y-Ettes President 1, Program Chairman 2; Hi-Tri 2, President 3; Homecoming Queen, 1947.
 CLARK, JOYCE, General: Mixed Chorus 1; Girls' Glee Club 1.
 CLEMENS, JACK, Vocational.
 CLIFTON, ROBERT, General: Football 3; Basketball 1, 2, 3; Track 2, 3; Hi-Y 2, 3; "Penrod"; "Balcony Scene."



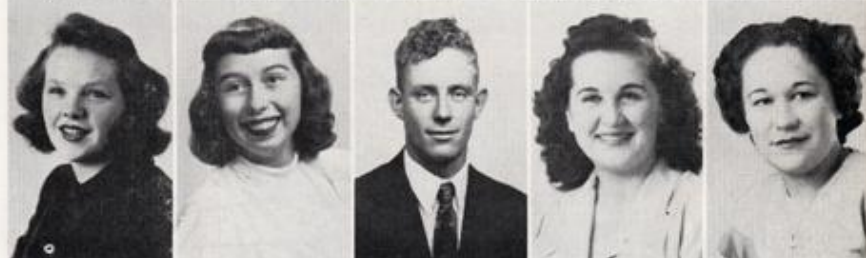
COAN, RALPH, Scientific: Hi-Y 2, 3; Movie Operator 2, 3.
 COOPER, SHIRLEY, General: D.D.T. Club 2; B-Y-Ettes 1, 2; Hi-Tri 2, 3.
 CORRICK, RICHARD, General: Basketball 1; National Honor Society 3.
 CROMWELL, ILENE, General.
 CROUTHAMEL, KENNETH, Vocational.



CROUTHAMEL, WILLIAM, General: Student Council President 3.
 DAHL, ELDON, Scientific: Football 1, 2, 3; Swimming Team 1, 2, 3; Hi-Y 3; "Penrod"; "Balcony Scene".
 DENNING, CHARLES, General: Football 1, 2, 3; Basketball 2, 3; Track 2; Baseball 1; Hi-Y 2, 3.
 DIXON, WILDA, Clerical.
 DORAN, BEVERLY, Scientific: Beaver Mixed Chorus 1, Boone 2, 3; Beaver Girls' Glee Club 1, Boone 2, 3; Beaver Sextette 1, Boone 3; Beaver Sophomore President; Home Room Secretary 3; B-Y-Ettes 2; Hi-Tri 2; Treasurer 3.



DOWD, PATRICIA, General: Dramatics 3; Pep Club 3; Hi-Tri 3.
 DRISCOLL, LEONORE, Language: Girls' Basketball Manager 2; Orchestra 1; "Snafu"; Pep Club 1, Vice-President 2, 3; B-Y-Ettes 1; Hi-Tri 2, 3.
 DUNCAN, EDWIN, General.
 EHLMANN, DELORES, Clerical: Bumble "B" 1; Girls' Glee Club 1.
 FRITCH, CHARLENE, General: Jordan Girls' Glee Club 1.



GOEPPINGER, FREDERICK, Scientific: Swimming Team 2; Hi-Y 2, 3.
 HAASE, JOHN, General.
 HANSON, MELVIN, Scientific: Movie Operator 3; P. A. System 3; Stage Crew 2, 3.
 HARRIS, CAROL, Stenographic: Bumble "B" 1.
 HAYS, JOHN WILLIAM, Scientific: Football 2, 3; Track 2; Swimming Team 2; Band 1; Hi-Y 3.



HELDT, EDMUND, General: Band 1, 2; Hi-Y 2, 3.
 HERMAN, JOHN, Scientific: Football 2, 3; Swimming Team 1, 2, 3; Student Council 1, Secretary 3; National Honor Society 3; Hi-Y 2, 3; "Penrod".
 HERRON, SHEILA, Stenographic: Hi-Tri 2.
 HESSEL, GLORIA, General: Bumble "B" 1, 2, 3; Quill and Scroll 2, 3; Band 1, 2, 3; Pep Band 3; Band Librarian 3; B-Y-Ettes 2, 3; Hi-Tri 2, 3; "Balcony Scene".
 HITSMAN, EUGENE, General: Hi-Y 2, 3.



HOEFLE, BONNIE, Stenographic: Bumble "B" 1, 2, News Editor 3; Scroll 2, 3; Quill and Scroll 2, 3; Orchestra 1, 2, 3; Mixed Chorus 1, 2; Girls' Glee Club 1; Violin Quartet 2; String Ensemble 2, 3; Home Room Secretary 2; All-State Orchestra 3; Speech Contest.
 HOFFMAN, DEAN, Scientific: Football 1, 2, 3; Dramatics 3; Hi-Y 2, 3.
 HOLBROOK, MARY, General: Girls' Glee Club 1, 2, 3; B-Y-Ettes 1, 2; Hi-Tri 2, 3.
 HOLTE, SHIRLEY DUGAN, General.
 HONOHAN, JAY, General: Football Manager 3; Basketball 1, Manager 2, 3; Baseball 1; Bumble "B" 2, 3; Declamatory 2, 3; D.D.T. Club 2; "Date with Judy"; "Snafu"; "The Vallant"; National Honor Society 2, 3; Hi-Y 2, 3; Quill and Scroll 3; "Penrod."





HUFFMAN, ARVID, Clerical; HULL, OPAL, Stenographic; Mixed Chorus 3; Girls' Glee Club 1, 2; HUTSON, JOYANNE, General; Band 2; Orchestra 2; Girls' Glee Club 1, 2; B-Y-Ettes 1, 2; Hi-Tri 2, 3; Tumbling Team 1, 3; JACKSON, WILMA, General; JENKINS, ROSEMARY, Scientific; Mixed Chorus 3.



JOHNSON, DEAN, Scientific; Football 1, 3; Baseball 1; Student Council 3; Hi-Y 3; JOHNSON, WAYNE, Scientific; JOHNSTONE, JAMES, General; Football 1, 2, 3; Basketball 1, 2, 3; Track 2; Baseball 1; Mixed Chorus 2, 3; Boys' Glee Club 3; Dramatics 1; Student Council 1, Vice-President 2; Junior Class Vice-President; Hi-Y Treasurer 2, 3; JOHNSTONE, JANE LEE, Language; Basketball 1, 2, Captain 3; Pep Club 2, Secretary 3; B-Y-Ettes 1; Hi-Tri 2, 3; JONES, VIRGINIA, Language; Bumble "B" 1, 2, 3; Quill and Scroll 2, 3; National Honor Society 2, 3; B-Y-Ettes 1, 2; Hi-Tri 2, 3; Orchestra 1, 2; Mixed Chorus 1, 2, 3; Girls' Glee Club 1, 2; accompanist for Girls' Sextette 2, Boys' Quartet 2, String Ensemble 1, 2, Violin Quartet 2, String Trio 1, 2.



KIMBALL, DONALD, General; Football 2; Track 1, 2; KING, MARSHALL, General; Football 2, Manager 3; Track 2, 3; Bumble "B" 2, 3; Quill and Scroll 2, 3; Student Council Executive Board 3; National Honor Society 2, 3; Senior Class Vice-President 3; Hi-Y 2, 3; "Penrod"; KIRKMAN, WILMA JEAN, Stenographic; Bumble "B" 2; Hi-Tri 3; "Penrod"; KRENZ, JOSEPH, Language; Football 1, 2, 3; Basketball 1, 2; Baseball 1; Bumble "B" 2, 3; Scroll 3; "What a Life"; "Thank You, Doctor"; "Antic Spring"; "Sparkin"; "The Valiant"; Home Room Secretary 3; Hi-Y 2, 3; Quill and Scroll 3; "Penrod"; LAGOPOULOS, EFFIE, Scientific; Basketball 1, 2; Girls' Glee Club 1; D.D.T. Club 2; B-Y-Ettes 1, 2; Hi-Tri 2, 3; Art 1, 2, 3; Stage Crew.



LAIDLEY, DELORIS, Clerical; Menlo Basketball 1; Menlo Girls' Glee Club 1; D.D.T. Club 2; B-Y-Ettes 1, 2; Hi-Tri 2, 3; LAIDLEY, DORIS, Clerical; Menlo Basketball 1; Menlo Girls' Glee Club 1; D.D.T. Club 2; B-Y-Ettes 1, 2; Hi-Tri 2, 3; Menlo Sophomore Class President; LARSON, LOIS, Stenographic; LEAVERTON, ROBERT, General; Track 2, 3; Swimming Team 2, 3; LITTELL, JAMES, General; Football 1, 2, Captain 3; Basketball 2, 3; Student Council 3; National Honor Society 3; Junior Class President; Hi-Y 2, 3.



LITTELL, RICHARD, Vocational; Football 1, 2, 3; Basketball 1, 2; Track 1, 2; Hi-Y 2, 3; LOVEJOY, SAM, General; Band 1, 2, 3; Mixed Chorus 1; Pep Band 2, 3; Swing Band 2, 3; LUCAS, GRETCHEN, Clerical; D.D.T. Club 2; B-Y-Ettes 1, 2; Hi-Tri 2, 3; Tumbling Team 3; LYCKE, GENEVA, Stenographic; MALLAS, JAY, Scientific; Football 1, 2, 3; Basketball 1, 2; Track 1, 2, 3; Mixed Chorus 2; Hi-Y 2; Drake Relay Discus Record.



McCALL, DELORIS, Scientific; Girls' Glee Club 1; Declamatory 2, 3; D.D.T. Club 2; Dramatics 1; Tumbling Team 3; McCALI, GENEVIEVE, Clerical; Mixed Chorus 1; Girls' Glee Club 1, 2; B-Y-Ettes 1; McCASKEY, DONALD, General; Football 1, 2, 3; McDONALD, ADDISON, Scientific; Dramatics 1, 2, 3; Hi-Y 3; Movie Operator 3; P. A. System 3; "Penrod"; McNACE, WILLIAM, General; Football 1, 2; Basketball 1.



MEADOWS, DONALD, General; Basketball 1, 2, 3; MEYER, GRANT, Scientific; Basketball 1; Swimming Team 3; Golf 1, 2, 3; Hi-Y 2, 3; "Penrod"; MILLARD, WILLIAM, Scientific; Hi-Y 3.

MILLER, MARJORIE, General: Tumbling Team 3; MOELLER, LOREN, Vocational; Band 2; MOORE, MARCIA LEE, Scientific: Bumble "B" 2, 3; Scroll 3; Mixed Chorus 3; Girls' Glee Club 1, 2, 3; Pep Club 2, 3; Hi-Tri 2, 3; Quill and Scroll 3; "Penrod" MORRIS, LORAMAE, Scientific: Basketball 1, 2; D.D.T. Club 2; B-Y-Ettes 1, 2; Hi-Tri 2, 3; Dramatics 3; MORRISSEY, CAMILLA, Stenographic: Bumble "B" 1, 2; Pep Club 3; B-Y-Ettes 1, Vice-President 2; Hi-Tri 2, 3.

MOSS, CHARLES, Scientific: Basketball 1, 2; Track 2; Baseball 1; Declamatory 2, 3; D.D.T. Club President 2; "Snafu"; "Date with Judy"; Student Council 1, Vice-President 2, President 3; "Penrod"; "Balcony Scene" NELSON, BEULAH, Scientific: Band 1; Home Room Secretary 3; NYSTROM, BETTY, C'er'al: B-Y-Ettes 2; Hi-Tri 3; NYSTROM, DEAN, Vocational: Hi-Y 2, 3; OLSON, DARLENE, Stenographic: Girls' Glee Club 3.

PETER, BETTY MAY, Stenographic; PETERSON, LOIS, Clerical; Hi-Tri 3; PHIPPS, RICHARD, Scientific; PLATTER, JOYCE, Stenographic; PRICE, ZOE ANN, Stenographic.

PRITCHARD, LOIS RUTH, Clerical; Council Bluffs Glee Club 1; RICHARDS, LEROY, General: Basketball 1, 2, 3; Hi-Y 3; RIGGS, HELEN, General: Scholastic State and National Art Awards; ROBINSON, ALICE, Stenographic; ROBINSON, RICHARD, General: Napier Basketball 1, 2; Napier Baseball 1, 2; Napier Mixed Chorus 1; Napier Boys' Glee Club 1, 2; Napier Class Secretary 2.

ROGERS, DONNA, Scientific: Bumble "B" 1, 2; Scroll 2, 3; D.D.T. Club 2; Dramatics 2; Pep Club 2, 3; Home Room Secretary 1; B-Y-Ettes 1, Secretary 2; Hi-Tri 2, 3; ROGERS, MORRIS, Scientific: Napier Basketball 1, 2; Boone 3; Napier Baseball 1, 2; Napier Mixed Chorus 1, 2; Napier Quartet 1; Napier Boys' Glee Club 1, 2; Napier Dramatics 2; Napier Student Council 1; Napier Class President 2; ROSE, DELORIS JEAN, Clerical: Band 1, 2, 3; Orchestra 1, 2, 3; Mixed Chorus 1, 2; Girls' Glee Club 1, 2; Pep Band 1, 2, 3; Cornet Trio 1, 2, 3; Cornet Quartet 1, 2, 3; Brass Quartet 1, 2; Brass Sextette 1, 2, 3; All-State Band 3; ROSE, JAMES, Scientific: D.D.T. Club 2; ROSS, DONNA, Clerical: Mixed Chorus 1; Girls' Glee Club 1; Hi-Tri 3; Student Librarian 2.

RUSCHMEYER, DOROTHY, Scientific: Bumble "B" 1, 2, 3; Scroll 2, Business Manager 3; Quill and Scroll 2, 3; Mixed Chorus 1, 2, 3; Girls' Glee Club 2; D.D.T. Club Secretary 2; Pep Club 1, 2, Vice-President 3; B-Y-Ettes Vice-President 1, 2; Hi-Tri 2, 3; Stage Crew; SAS, ROBERT, Arts and Crafts; SCHOLZ, SONIA, General: Orchestra 1, 2, 3; Mixed Chorus 1, 2, 3; Girls' Glee Club 1, 2; Madrigal Group 1; Girls' Sextette 1, 2, 3; Double Mixed Quartet 1, 3; String Quartet 1, 2, 3; String Ensemble 1, 2, 3; All-State Orchestra 2; Pep Club 2, 3; B-Y-Ettes 1, 2; Hi-Tri 2, 3; "Penrod" SCHULTZ, ARLO, Scientific: Boys' Glee Club 2; Hi-Y 2, 3; SEATON, DONALD, General: Football 3; Luther Basketball 1, 2; Boone 3; Luther Baseball 1, 2; Luther Mixed Chorus 1, 2; Boone 3; Luther Small Music Groups 1, 2; Boone 3; Luther Dramatics 2; Luther Class President 2; Hi-Y 3; "Penrod."

SHAFFER, PATRICIA, Stenographic: Bumble "B" 2, 3; Scroll 3; Quill and Scroll 2, 3; Pep Club 3; National Honor Society 3; B-Y-Ettes 2; Hi-Tri 3; Stage Crew; SHELL, MARY LOU, Clerical: Mixed Chorus 1; Girls' Glee Club 1, B-Y-Ettes 2; Hi-Tri 3; SMILEY, ALAN, Scientific: Track 1, 2, 3; Swimming Team 1, 2, 3; Pep Club Cheerleader 1, 2, 3; Hi-Y 2, 3; "Balcony Scene"; "Penrod."



We are Seniors... Last September we were startled by the realization that this would be our last year here in high school. No more report cards, book reports, or semester tests, no more proms, school parties, or club meetings—no more of high school.

When we passed from grade school to this large building, Boone High School, our idols were the seniors, those who knew the building that we didn't know, knew the teachers, and laughed and talked when walking through the halls between classes while we ran for fear of being late.

We grew up. We took the place of those idolized seniors, and now we are being graduated—leaving behind this building that holds memories no amount of money could replace.

Now that the time has come, we almost hesitate, almost **hate** to take that step. We hate not only to think of leaving the building, but of losing contact with our many friends and teachers.

Yet we can't help being proud, proud of that certificate that says that we are graduates of Boone High School. Our thanks and gratitude to the teachers who helped us grow up.



SMITH, VIRGIL, General: . . . SOVEREIGN, RICHARD, Arts and Crafts: Swimming Team 2, 3; Hi-Y 2, 3 . . . SPARGER, EVELYN, General: Roosevelt Mixed Chorus 1, Boone 3; Roosevelt Girls' Glee Club 1, 2, Boone 3; Roosevelt Home Room Secretary 1; B-Y-Ettes 1; Hi-Tri 2, 3 . . . STALEY, EUGENE, General . . . STATTON, EDWARD, Scientific: Football 1, 2, 3; Basketball 1; Dramatics 2, 3; "The Cornhusk Doll"; "The Valiant"; National Honor Society 3; Hi-Y 2, 3.

STEMMERMAN, WILLIAM, General: Mixed Chorus 1; D.D.T. Club 2; "What a Life"; "Snafu"; "A Date with Judy"; Student Council 3; National Honor Society 3; Hi-Y 2, 3; Forensics 1, 2 . . . STONEBURNER, RONALD, General . . . STURTZ, MABEL, Arts and Crafts: Band 1, 2, 3; All-State Band 3; Girls' Sextette 2; Girls' Glee Club 1, 2; Pep Band 2, 3; Clarinet Quartet 1, 2, 3; First in National Music Contest 2 . . . STURTZ, MAURICE, Bookkeeping . . . SWANK, MARIE, General: Bumble "B" 1, 2; Scroll 3; Quill and Scroll 2, 3; Band 1, Majorette 3; Mixed Chorus 1, 2; Girls' Glee Club 2; Pep Club 2, 3; Senior Class Secretary.

TEAGARDEN, DONNA, General: Mixed Chorus 1, 2; Girls' Glee Club 1 . . . THEDE, EILEEN (Mrs. Gustafson), General . . . THIES, GERALD, General . . . THOMAS, ALTA RUTH, General: Bumble "B" 2, 3; Quill and Scroll 2, 3; Band 1; Orchestra 1; Pep Club 1, 2; Historian 3; National Honor Society 2, 3; B-Y-Ettes Secretary 1; Hi-Tri 2, 3; Stage Crew . . . TILLEY, ALICE BERYL, Stenographic: Bumble "B" 2.

TILLEY, DALE, General: Football 2; Basketball 2, 3 . . . TINGWALD, LOIS, Stenographic: Bumble "B" 1, 2, Advertising Manager 3; Scroll 3; Quill and Scroll 2, 3; Pep Club 2, 3; National Honor Society 2, 3; B-Y-Ettes 2; Hi-Tri 2, 3; Stage Crew . . . TUTTLE, ARNOLD, Scientific: Student Council 1; Hi-Y 2, 3 . . . VEALE, JOANNE, Stenographic: Mixed Chorus 1, 2, 3; Girls' Glee Club 1, 3; Girls' Sextette 1, 2, 3; Double Quartet 3; Home Room Secretary 2; B-Y-Ettes 1, President 2; Hi-Tri 2, 3 . . . WEBER, BETTY, General: Bumble "B" 2, 3; Mixed Chorus 2, 3; Girls' Glee Club 1, 2; Mixed Double Quartet: B-Y-Ettes 1, 2; Hi-Tri 3; Quill and Scroll 3; Pep Club 3.

WIENBERG, BYRON, General: Football 2, 3; Track 2, 3; Hi-Y 3 . . . WIGHT, BETTY, Stenographic . . . WILEY, LARRY, Language: Student Council 1, 2; Declamatory 3; American Legion Forensic Contest 3 . . . WITCRAFT, EDGAR, General . . . WRIGHT, BILL, General.



Junior Broadcast



Chance, Nickell, Diehl

This is the junior class bringing you a day of good listening over station B.H.S., the Voice of Boone High. The "On-The-Air" signal lights up at 7:30 when Don Headley starts the ball rolling with his musical jamboree, followed by Rita McBirnie, the world famous newscaster, with her up-to-date report on the "Social Trends" (??) of Boone High.

On the Famous Funny Farmers program at 8:15 we bring you our two noted farm specialists, Jim Baumgardner and Ray Kennedy, discussing "Why Sheep Should Adopt 'The New Look'."

9:00 o'clock brings George Westerman and his "Simple Slimming Exercises for the Chubby Chicks."

Shirley Core presents **Advice to the Lovelorn** at 9:30. As is often said, "Experience is the best teacher," and so Shirley is giving her talents to help others with their problems.

David Hutson stars in **Young Dr. Malone** at 9:45, followed by Loyd Settle and the glee club and orchestra in a half-hour program. Loyd has taken over this spot while Fred Waring is on vacation.

At 10:30 **When a Girl Marries** comes into your home with Emma Belle Douglass in the title role.

Hear the sophomores as **Today's Children** at 10:45.

Jake's University presents a square-table discussion on "Appreciating Poetry" at 11:00 with Jim Youll, Bob Sinclair, Donnabelle York and Ray Ferrari participating.

Don Needham portrays David Harem in the serial of the same name from 11:30 to 11:45.

Sweet and melodious harmony is presented by

Kenny Bloomquist on **Rhythm Roundup**. At this time you will hear the Thirteen Flop Tunes of the Week. In our sneak preview we found that this week's thirteen flop tunes and their performers are:

1. "Personality"—Beverly Canady.
2. "Easter Parade"—Virge Parker.
3. "Hard-Hearted Hannah, the Vamp of Savannah"—Marilyn Doran.
4. "Too Fat Polka"—Marilyn Otis.
5. "Gentleman Jack, the Ladies' Man"—Jack Blanshan.
6. "Rum and Coca Cola"—John Linderblood.
7. "She Is My Rosie"—Rose Ann Franklin.
8. "A New Kind of Man"—Red Houser.
9. "Gonna Get a Girl"—Virg Byerly.
10. "That's What I Like About the South"—Eileen Nickerson.
11. "You Are My Sunshine"—Jackie Johnson.
12. "Two Loves Have I"—Bebe Fisher.
13. "Take Your Girlie to the Movies"—Jim Fangman.

Your good listening continues at 12:00 noon with John McEntaffer delivering Shakespeare's immortal "A Horse, A Horse, My Kingdom for a Horse" on the **Farm Hour**, followed by John Burke and his quartet in a fifteen-minute interlude. At 12:30 Richard Koppenhaver edits his views on the latest news. At 1:00 over B.H.S. is the touching and moving story of two girls, **Dody and Elaine**, brought together in the course of time. This is a quarter-hour program followed by **Life Can Be Beautiful** starring Dick Dugger and Joan Cunningham in a portrayal true to life.

At 1:30 Bonnie Lou Brown plucks at your heartstrings during **A Woman in White**, the tender story of a nurse.

We take you to the Ick Library at 1:45 for an on-the-spot broadcast of library news by Margaret Carlson, who will review a new book of poetry by the immortal bard, Manges. This broadcast is made possible through the courtesy of Robert Ick, who now heads the library.

2:30 is time for Cass Canady, the popular comedienne. She will enact a nightmare in which she and some girls play on a football team.

Just Plain Bill (McVicker) is on at 3:30 with all his trials and tribulations.

Bebe Fisher, an experienced peacemaker, will talk on "How to Soothe Rival Factions." Miss Fisher gained valuable experience during the football season of 1947. Her speech will be carried at 3:45.

4:00 o'clock bring us to the children's programs. First is **Fred Hartman Armstrong**. Monte Nash, starring as **Captain Midnight**, will be preceded by Kenny "Superman" Lindmark at 4:15. The comic strip figure, **Ned Brant**, comes to life at 4:45 in the person of Virgil Byerly—Champion.

5:00 is time for **A Date with a Junior** starring none other than the toast of Broadway, Jo Ellen Lane! Hailed as 1948's most promising young actress, Miss Lane will prove that bigamy doesn't pay, even when it's the figment of her imagination.

Your digestion is aided by Shirley Heitkamp's soothing melodies as brought to you over **Supertime Serenade** with Joyce McIlvain's orchestra at 5:30.

The President, David Diehl, delivers a fireside chat on his foreign policy tonight at 6:00.

At 6:30 the "On the Air" signal flicks off as we say "Goodbye Until Forty-nine."

Sophomores



Smile of Beauty
Cheesecake

Personality
Going My Way?
Hungry?

Ready to Go

Tom
Relaxin'
Bashful?

Wow!
You're Kiddin'
Water's Fine!

Wow!
You're Kiddin'
Camera Conscious

Watch the Birdie
Posin' Purty

The Sophomore Key

Our sophomore class of old Boone High
Is enough to make our seniors sigh.
Such grace and charm are the rule
They're surely an asset to our school.

Who's in this sophomore class so great?
A few of their names we shall relate;
But because of lack of space and time
And our ability to rhyme,
Just names of a few sophs you shall see
In this short poem, "The Sophomore Key."

As I gaze into my crystal ball
And see the faces of them all,
There appears the face of one dear lass
The prettiest blond in the sophomore class,
Marilyn Curell, belle of the ball,
Admired for her brain by one and all.
And if it's intellect you want to see,
There's Duffy and Martin and Mary Lou P.
D. Zagel and Klute do very good work,
And still there are others who never shirk.

I look again into my glass sphere,
My goodness! What is it that I see here?
An athlete of this sophomore class,

Butch McCartney, the boy with the pass,
Who'll help to beat Ames High next year.

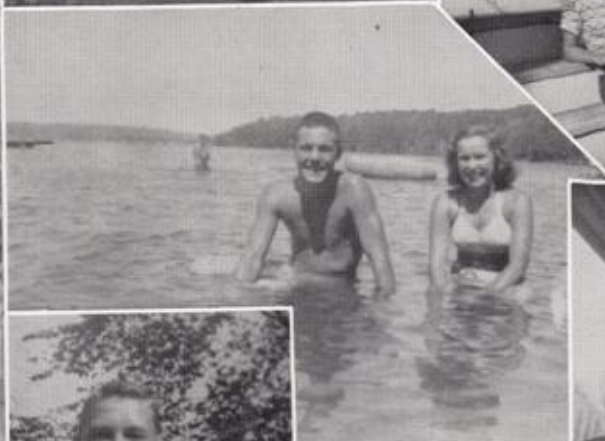
Also they have one darling lad
Who is sometimes good and sometimes bad.
Young Jerry Smith is our "book-cover boy,"
To the sophomore class he is a joy.

Each year there is a boy so tall
That naturally he plays basketball.
Bob Powers a famous coach will be;
If you don't believe me, just wait and see.

Tom Fangman is a sophomore lad
Whom you see very rarely mad.
In orchestra or band you'll see
Tom play the drums and tympani.

Ushering people at the show,
Is a sophomore boy we all should know.
He will show you to your seat;
Bob Jensen is the boy to meet.

These are only a few of the sophomore class
With its many a winning lad and lass.
We're sorry we couldn't mention them all,
This class of Junior III's next fall.





FRONT ROW: Fisher, Crouthamel, Herman.
 SECOND ROW: Clarke, Olson, Preston, Donald Diehl, Jensen, Miller.
 THIRD ROW: Shadle, Stemmerman, David Diehl, Harvey, Kading, Dugger.
 BACK ROW: Houser, King, Johnson, Littell, Moss, Duffy.

Student Council

The student council of Boone High School, under the able guidance of Mr. Donald Seaton, principal, took an active part in running school affairs for the past year. Headed by Bill Crouthamel, president; Alice Fisher, vice-president, and Jack Herman, secretary, the governing body opened the year with a clean-up-the-halls campaign. Through the use of posters and home room talks, an effort was made to keep our halls free of paper and rubbish.

Revision of the constitution took a good deal of the council's time, the first change being an amendment to provide for strong leadership. Under the new provisions, five members are to be added to the council each year. They will include three upper-class presidents and two members-at-large, to be elected by the student council. This first year Charles Moss, David Diehl, Dorothy Clarke, James Littell, and William Stemmerman were taken into the group. A committee was chosen to investigate further constitutional amendments.

The Boone council this year became one of the first schools to belong to the newly-formed State Student Council Association. The first state meeting was held in Ames with four of the local council attending. Our representatives were Charles Moss, Alice Fisher, Marshall King, Kenyon Hoffman, and Miss Thornburgh, adviser. A prominent part was taken by our members. Charles Moss was elected chairman of the Central Iowa District, and in the election of state officers, Alice Fisher won over candidates from LeMars and Clinton to become state secretary.

The annual good-will program of the council came in the form of a C.A.R.E. package drive. An assembly featuring talks by the council officers and a movie depicting the tragic European conditions opened the drive. A successful collection through home room competition brought in \$125.54 which was used to send twelve packages to a designated school in France.

Stressing knowledge of city government, the council revived the plan of hav-

The Scroll Staff



TOP PICTURE: Editorial Staff: Sharon Bowes, Joe Krenz, Irene Rountree, Joan Cunningham, Mrs. Stevens (adviser), Donna Blanchard, Marilyn Otis, Joanne Veale, Alice Fisher, Robert Ick, Joyce Barquist, Mary Lou Bice, Patricia Berglund, Bonnie Hoefle, Dorothy Clarke, Jo Ellen Lane.



LOWER PICTURE: Advertising Staff: Marcia Moore, Virginia Parker, Marcella Eckberg, Beverly Canady, Mrs. Gluenkin (adviser), Dorothy Ruschmeyer, Barbara Brainard, Donna Rogers, Lois Tingwald, Patricia Shafer.

EDITOR-IN-CHIEF Mary Lou Bice

ADVERTISING MANAGER Dorothy Ruschmeyer

EDITORIAL STAFF—Mary Lou Bice, Joanne Veale, Joyce Barquist, Dorothy Clarke, Donna Blanchard, Joe Krenz, Jo Ellen Lane, Robert Ick, Alice Fisher, Bonnie Hoefle, Sharon Bowes, Patricia Berglund, Irene Rountree, Deborah Anderson, Joan Cunningham, Marilyn Otis.

ADVERTISING STAFF—Dorothy Ruschmeyer, Patricia Shafer, Lois Tingwald, Marcella Eckberg, Barbara Brainard, Beverly Canady, Marcia Moore, Donna Rogers, Virginia Parker.

ADVISERS Mrs. Zoe Stevens and Mrs. Margaret Gluenkin

Bumble "B" Staff



TOP PICTURE: Editorial Staff.

LOWER PICTURE: Advertising Staff: Alta R. Thomas, Patricia Shafer, Shirley Core, Miss Ealy (adviser), Dorothy Ruschmeyer, Lois Tingwald, David Diehl, Marcia Moore, Beverly Canady, Virginia Parker.

EDITOR-IN-CHIEF	Dorothy Clarke
NEWS EDITOR	Bonnie Hoefle
FEATURE EDITOR	Mary Lou Bice
EXCHANGE EDITOR	Jo Ellen Lane

NEWS STAFF—Bonnie Hoefle, Margaret Carlson, Donna Blanchard, Irene Rountree, Joan Olson, Gloria Hessel, Virginia Jones, Marcella Eckberg.

FEATURE STAFF—Mary Lou Bice, Delores Schulz, Joyce Barquist, Ardyce Kading, Patricia Berglund, Barbara Bennett, Mary Lou Price, Betty Weber, Ardyth Pritchard, Shirley Westberg, Joan Cunningham, Shirley Heitkamp, Elaine Shafer, Gretchen Hall, Barbara Barnard, Dorothy Clarke.

SPORTS STAFF—Joe Krenz, Jay Honohan, Marshall King, Alice Fisher, Sharon Bowes, Joanne Smith.

ADVERTISING MANAGER	Lois Tingwald
-------------------------------	---------------

COLLECTORS	Marcia Moore and Dorothy Ruschmeyer
----------------------	-------------------------------------

ADVERTISING STAFF—Virginia Parker, Patricia Shafer, Shirley Core, David Diehl, Beverly Canady, Alta Ruth Thomas.

ADVISER	Miss Jane Ealy
-------------------	----------------

The Band and Orchestra



BAND...

The Boone High Band organizations followed their new director, Mr. John Green, through three seasons of lively activity. In the familiar red, white, and blue uniforms, the marching band played at all of our home games in the fall and accompanied our football team to two out-of-town games. Their most popular stunts were those in which the members, wearing colored lights on their hats, made various formations on the darkened field while playing appropriate tunes.

The "Pep Band" is well named, for it added zest to pep meetings and basketball games, boosting the spirit of both team and spectators. In addition to being present at the regular games, it followed the Treadors to the district tournament at Webster City and to the state tournament at Iowa City.

During the latter part of the year attention was turned to the Concert Band. It participated in the Christmas Vesper program and on February 25 gave its annual concert, preceded by an assembly. Among the heavier and more difficult numbers played were Von Weber's "Oberon Overture," and "Second Symphony in B. Minor" by Borodin. Several marches and lighter selections included "Bells Across the Meadows" by Ketelby. Featured at this concert was Kenneth Bloomquist, cornet soloist, in a remarkable performance of "Bride of the Waves" by Clarke. The

entire concert band entered Brodin's "Symphony" in the State Music Contest at Creston on May 1.

ORCHESTRA...

The Boone High Symphony Orchestra, under the direction of Mr. Konrad Scholl, enjoyed another eventful year. Its first concert, held on January 21, was attended by the largest and most enthusiastic crowd in its history. Specially featured on the program was Eugene Hillgoss, solo cellist, playing "Hungarian Rhapsody," with orchestral accompaniment. The entire group presented Haydn's "Symphony in D Major," Beethoven's "Finale," "Concerto No. 2" by Rachmaninoff, and "March Slave," by Tchaikowsky, as well as several popular and novelty tunes. The new costumes, long black skirts and white blouses, were very attractive.

An innovation was the All-State Orchestra Concert at Des Moines January 2 and 3. The twenty-five members from our Boone orchestra were chosen here October 25 by audition.

As is the custom, all three departments collaborated in presenting a Christmas Vesper Service on December 14, with the orchestra contributing music for singing of carols. Their featured numbers were "Finlandia" by Sibelius, and a spiritual by the string section.

In addition to providing an assembly program, the orchestra entered Haydn's "Symphony" and "March Slave" in the State Music Contest at Creston, May 1.

Vocal Department



MIXED CHORUS

FRONT ROW: Barnes, Sparger, Weber, Myers, McIlvain, Curell, Veale, Oxenford, Burlingame, Kokinakakis, Harnam.
 SECOND ROW: Fossgren, J. Johnson, Hall, Richards, Barrow, Hudson, Standley, Morgan, M. Doran, Moore, Crouse, Core, Cunningham.
 THIRD ROW: Moffatt, Lindmark, Reed, Fangman, Heitkamp, Ruschmeyer, Scholl, B. Doran, Marshall, Settle, Hessel, Kaness.
 BACK ROW: Duncan, Becker, Goldsworth, Johnstone, McCartney, Weisgerber, W. Johnson, Dugger, Seaton, Arringdale, Bloomquist, Stark.

GIRLS' GLEE CLUB

FRONT ROW: Myers, Cooper, Jacobson, Cole, Curell, Zagel, Oxenford, Martin, Wisecup, Reynolds, Tilley, Walker, Reed.
 SECOND ROW: Johnstone, B. Joyce Anderson, Craven, Fairchild, Herman, Vitt, Lyon, Johnson, Cowhick, Woodworth, Davis, King, Olson, Cray.
 THIRD ROW: Cline, Nelson, Shadle, Brainard, Miller, Briley, Atherton, Peterson, Munsell, Ingalls, Garland, McAlpine, B. Jean Anderson, Smith, Snyder, Anderson.

VOCAL...

The Boone High School vocal department, under the direction of Miss Josephine Hultquist, presented its first concert of the year during the Christmas season. The program consisted of special numbers and the traditional Yuletide carols.

On January 3, a concert festival was held in Des Moines with representatives for the vocal chorus being chosen from all over the district. Eight members from the Boone High Chorus selected for the chorus were as follows: James Becker, Richard Weisgerber, Paul Stark, John Burke, Shirley Heitkamp, Beverly Doran, Joanne Standley, and Patricia Berglund.

During the year several small groups were organized: Girls' Sextette: Patricia Berglund, Beth

Hudson, Marilyn Crouse, Joanne Veale, Sonia Scholl, and Beverly Doran. Boys' Quartet: Richard Weisgerber, James Becker, Kenneth Bloomquist, and John Burke; and a Mixed Quartet: Sonia Scholl, Beth Hudson, Jerry Arringdale, and Richard Weisgerber. These groups put on many performances throughout the year and competed with similar groups from other towns at the State Contest held in Creston on April 30 and May 1. Dorothy Ruschmeyer entered the contest in the piano solo division. The Mixed Chorus and winners in the preliminary state music contest held at Roland on April 3, also went to the state contest. This contest is one of the outstanding events for the vocal groups and much time is spent preparing for this appearance.

A beautiful spring concert was presented to the public on April 23.



GROUPS

These instrumental groups have appeared on the programs of various social organizations in Boone. Many individuals in the groups also appeared as soloists at various times.



Instrumental Groups

"By harmony our souls are swayed;
By harmony the world was made."

Pictured on the opposite page are a few of the small instrumental groups organized by Mr. Konrad Scholl, head of the Music Department, and Mr. John Green, band director. The frequent appearance of these groups in various programs for parties, clubs, church functions, and teachers' organizations attests their musical ability and skill. These small music groups rated twenty-five one's and five two's in the District Music Contest held at Roland, April 2 and 3. Winners in the State Music Contest, May 1, competed in the State Final Contest for Solos and Ensembles which was held at Boone on May 15.

Flute Trio

Elaine Hohanshelt, Dora Munsell and Jean Lyon compose the Flute Trio which entered the state contest at Creston and performed for various local groups such as the Rotary Club and the Boone Woman's Club.

String Quartette

At a string conference in Indianola the String Quartette, consisting of Joyce McIlvain, Lorna Hunter, Sonia Scholl and Shirley Preston, received a "1" rating. Their main number was "Quartet No. 35" by Haydn.

Woodwind Quintette

This group made its outstanding appearance at the Des Moines Woodwind Clinic playing selections by Mozart. The quintette is made up of Marcella Eckberg, Lorraine Murken, Marilyn Miller, Elaine Hohanshelt, and Nancy Grimes.

String Ensemble

Eight girls under the supervision of Mr. Konrad Scholl, furnished entertainment at the Rotary Club dinner and P.T.A. Founders' Day celebra-

tion. Sonia Scholl, Joyce McIlvain, Bonnie Hoefle, Mary Lee Vickery, Alice Herman, Shirley Preston, Pat Sandell, Margaret Atherton and Lorna Hunter presented a well-balanced program including Cole Porter's "Begin the Beguine," "Air," by Bach, and lighter numbers like "Play Gypsies, Dance Gypsies."

Clarinet Quartette

Entering contests at both Creston and Roland were Marylene Shadle, Joan Standley, Ann Marie Dennert, and Marcella Eckberg in the Clarinet Quartette. Specially featured was "Prelude and Schurzo," by Miller.

Cornet Trio

In keeping with their number "Three Trumpeteers" are Joan Burlingame, Delores Rose, and Kenneth Bloomquist as the Cornet Trio. They entered the State Music Contest at Creston and appeared at many local functions, including the basketball banquet.





A DATE WITH JUDY

CAST—STANDING: Irene Rountree, Charles Moss, Marilyn Olson, William Stemmerman, Marilyn Clark, Jo Ellen Lane, Jay Honohan. SEATED: Kenyon Hoffman, David Olson, Beverly Orr. STAGE CREW: Melvin Hanson, Addison McDonald, James Becker, Dean Hoffman.

Speech Department

The department of dramatics and public speaking was under the supervision of Mrs. Morgan Thomas, head of our high school speech department, and Mrs. Isabel Taylor, who assisted with forensic work.

Our first play, "A Date with Judy," was presented on November 14, 1947, with the following cast:

Judy Foster	Jo Ellen Lane
Melvin Foster	William Stemmerman
Dora Foster	Marilyn Clark
Randolph Foster	Kenyon Hoffman
Hannah	Irene Rountree
Barbara Winsocket	Marilyn Olson
Oogie Pringle	Jay Honohan
Mitzi Hoffman	Mary Ellen Dowd
Mr. Martindale	Tom Fangman
Mrs. Hotchkiss	Joanne Standley
Eloise Hotchkiss	Gretchen Hall
Mrs. Schultzhammer	Nancy Grimes
Rexford O'Connor	Charles Moss
Susie	Beverly Orr

With the coming of the new year, 1948, contest

here. Those participating in the home elimination were: Normagene Cole, Bill Johnson, and Marylene Shadle in the Oratorical Division; Jo Ellen Lane and Mary Jo Olson in Humorous; and Bonnie Hoefle, Deloris McCall, Irene Rountree, and Larry Wiley in the Original Oratory.

Those receiving a "1" rating in home elimination, Marylene Shadle, Jo Ellen Lane, and Bonnie Hoefle, also were in the preliminary speech contest held here on February 18, 1948. Mary Lou Bice and Charles Moss entered in radio speaking; Marilyn Clark, Mary Jo Olson, and Deloris McCall in interpretive reading; Gretchen Hall in dramatic; and Deborah Anderson and Kenneth Bloomquist in extemporaneous speaking. The schools participating in this contest besides Boone were Jewell and Ogden.

Since Boone was host to the State Speech Contest, they were automatically allowed to hold back two contestants and a play for that contest. Bonnie Hoefle and Jo Ellen Lane were chosen. At the preliminary contest, they gave their selection started with an elimination contest held

tions for criticism only. The play that was held back was entitled "The Balcony Scene," and had the following cast:

A Man	Eldon Dahl
His Friend	Charles Moss
A Mother	Barbara Brainard
Her Daughter	Gretchen Hall
A Wife	Donna Blanchard
Her Husband	Robert Clifton
A Gangster	Alan Smiley
A Girl	Gloria Hessel

Those receiving a "1" rating in the preliminary contest, and thereby being able to compete in the pre-district contest held at Humboldt, March 3, 1948, were: Charles Moss, Deloris McCall, and Deborah Anderson. At the Humboldt Pre-District Contest, Charles Moss and Deloris McCall were given "1" ratings. These two were also given "1" ratings at the district contest held at Ida Grove and were promoted to the state contest held here April 16 and 17.

On April 9, the Senior Class of Boone High School presented their senior class play, "Penrod," with the following cast:

Tim	Eldon Dahl
Della, the Schofield cook	Marcia Moore
Mary Schofield, Penrod's mother	Marilyn Clark
Mr. Jones, Marjorie's father	Robert Clifton
Jarge	Lee Caffrey

Robert Williams	Jay Honohan
Mrs. Bassett	Sonia Scholl
Henry P. Schofield	Donald Seaton
Margaret Schofield, Penrod's sister	Joyce Barquist
Herbert Hamilton Dade	Joe Krenz
Penrod Schofield	Marshall King
Sam Williams	Jack Herman
Marjorie Jones	Jean Kirkman
Georgie Bassett	Grant Meyer
Rev. Lester Kenobline	James Becker
Herman	Charles Moss
Verman	Alan Smiley
Mr. Coombes, chief of police	Addison McDonald

"Sparkin'," a one-act comedy, was presented early in the year to both the junior high and senior high with the following cast:

Orrie	Joe Krenz
Lessie	Gretchen Hall
Grandma	Jo Ellen Lane
Susie	Mary Lou Bice

At their Spring Festival, the Boone Woman's Club enjoyed a one-act play entitled "The Valiant," portrayed by the following cast:

Dyke	George Westerman
The Warden	Joe Krenz
Father Daly	William Stemmerman
Josephine	Mary Lou Bice

CAST OF SENIOR CLASS PLAY "PENROD"



FIRST ROW, left to right: Jack Herman, Marshall King, Grant Meyer, James Becker

Honor Societies



QUILL AND SCROLL

FIRST ROW: Mary Lou Bice, Donna Blanchard, Dorothy Clarke, Virginia Parker, Patricia Berglund. SECOND ROW: Alta Ruth Thomas, Bonnie Hoefle, Patricia Shafer, Lois Tingwald, Marshall King, Barbara Brainard. BACK ROW: Miss Ealy, Mrs. Gluekin, Mrs. Stevens, Dorothy Ruschmeyer, Gloria Hessel, Virginia Jones.

QUILL AND SCROLL

The Quill and Scroll is a national honorary society for high school journalists. Twice each year, a group of students is initiated on the merit of their work on the Bumble "B" and Scroll. Officers for this year were Donna Blanchard, president, and Patricia Shafer, secretary-treasurer. Advisers were Miss Jane Ealy and Mrs. Zoe Stevens. New members in February were Joe Krenz, Betty Weber, Jay Honohan, Irene Rountree, Marcia Lee Moore, Marcella Eckberg, Alice Fisher and David Diehl. Another group was to be initiated after publication of the Scroll.

NATIONAL HONOR SOCIETY

On January 15, in a traditional candlelight service held in the high school auditorium, thirteen new members were initiated into the Boone chapter of the National Honor Society.

Privileged to march in the processional were those who ranked highest scholastically among the

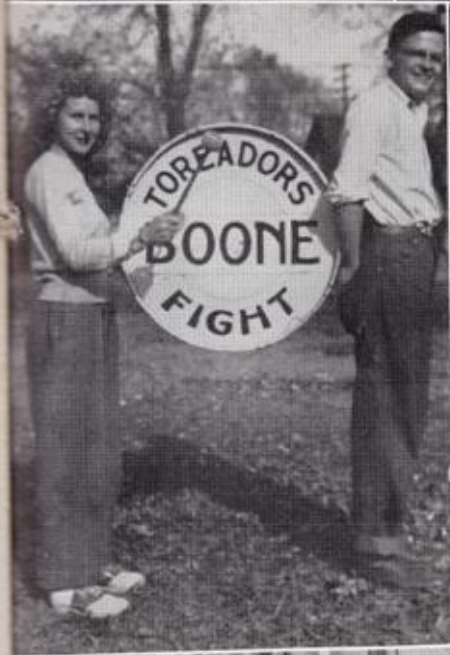
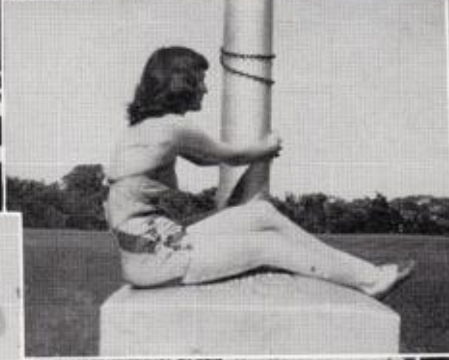
junior IV's and seniors. Musical background for the occasion was provided by the high school orchestra. As the pages escorted the inductees to the stage, a sextette of sophomore girls sang "The Night Has a Thousand Eyes."

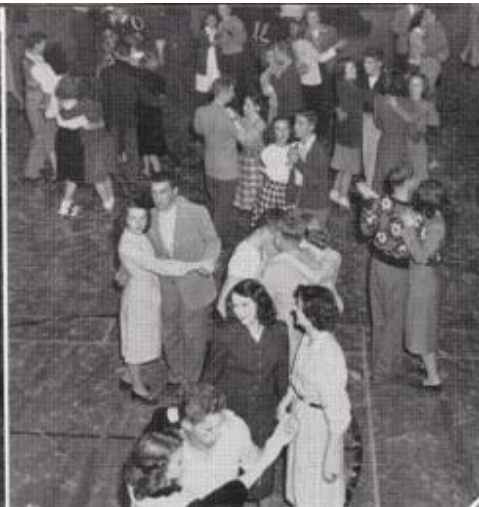
Members of the National Honor Society participating in the initiation ceremony were Don Maffat, Jane Snedeker, William Curell, and Tom Grimes, now enrolled in Boone Junior College; and Marshall King, Charles Moss, Dorothy Clarke, Bonnie Hoefle, Jay Honohan, Patricia Berglund, Donna Blanchard, and Virginia Jones, all seniors. Miss Vaughn Thornburgh directed the initiation.

New members chosen on the basis of scholarship, leadership, character and service were Luvern Baker, Richard Corrick, James Littell, Ed Statton, William Stemmerman, Mary Lou Bice, Beverly Doran, John Herman, Patricia Shafer and Lois Tingwald from the senior class; and Alice Fisher, Joan Cunningham, and Jo Ellen Lane from the junior IV class. Another group was to be initiated on May 20.



NATIONAL HONOR SOCIETY





Homecoming

Originality and artistic ability were evident during the Homecoming festivities of 1947. The outstanding events were the crowning of the queen, Dorothy Clarke, at the pep assembly, the colorful parade following, and the Scroll dance in the evening after our victory on the football field.



Virginia Lee Parker



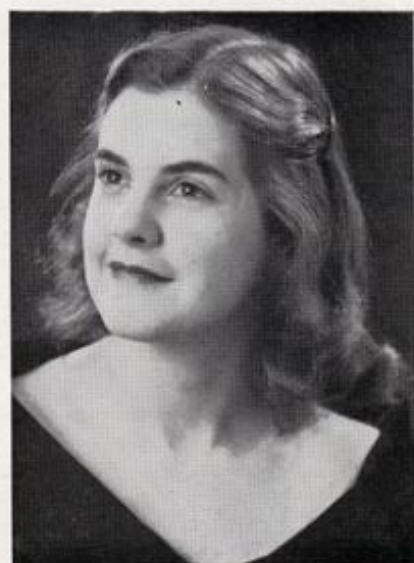
Patricia Berglund



Dorothy Clarke



Dorothy Ruschmeyer



Marie Swank

Our Football Team



FRONT ROW: Johnstone, Denning, Case, Brown. SECOND ROW: Linderblood, Mallas, D. Littell, Krenz, Long, J. Littell, Dahl, Leiden, Clifton. THIRD ROW: Manges, Arringdale, Yegge, Herman, Krug, Blanshan, Westernman, Bridges, Byerly, Manager Lindmark. FOURTH ROW: Manager Honohan, Coach Baldus, Chance, Nickell, Houser, Seaton, Powers, Grimm, Hayes, Larson, Knowles, Statton, Manager King. BACK ROW: Odell, Dugger, G. Youll, J. Youll, McCaskey, York, McEntaffer, Hayes, Pepples, Manager Curell.

Ten seniors and a junior, coached by Larry Baldus and his assistants, Howard Stutzman and Vernon Elslager, composed the fighting Toreador's football team of 1947, which undertook a rough nine-game schedule including many top-ranking teams. The Red and Green opened their season with the Roosevelt Roughriders of Des Moines who displayed superior breakaway running and high-percentage passing to romp to a 25-0 victory over the locals.

Conference opponent, Oskaloosa, provided the next game for Boone, and with the Toreadors' offense sparkling, the victory went to Boone by a 13-0 count. Both touchdowns were made by Quarterback Chuck Denning, while Johnstone kicked the extra point.

Another Friday night, and the Toreadors faced the Blue Jays of Perry. Playing a spasmodic game, the Boone aggregation pushed across two touchdowns, to win 14-0.

Marshalltown presented the next hazard as the Red and Green traveled to meet their undefeated conference foe. The Toreadors were up for this game and played the entire first half in enemy territory. Four times they smashed their way within the Bobcats' 10-yard line, only to be repulsed by the strong Marshalltown defense. In the final half, amid a downpour of rain, the potent Bobcats showed their championship form and pushed over two markers to save their record by a 13-0 score. Boone was justly proud of its team following this encounter, as it held this undefeated eleven to the lowest score of any team during the Bobcats' season.

Homecoming brought the Toreadors back to

Boone to face the Grinnell Tigers, another Central Iowa Conference foe. The excitement and return of old grads seemed to stimulate the players as they rose to the occasion and tramped back the Tigers 21-0.

A rough, undefeated Carroll team provided the next hurdle for the Boone lads. After 48 grueling minutes of play, neither team had crossed the other's goal line and the final gun brought a scoreless tie.

The Toreadors jumped back into conference play against a strong team from Newton. A quick touchdown by the Cardinals got them off to a good start. Boone tied the score at 7-all at the end of the half, but Newton carried off a final 13-7 victory.

The encounter with the Ames Little Cyclones was the next in line, and excitement and tension rode high and wide preceding this annual game which is considered one of the strongest rivalries in state football. Just as in 13 previous years, the Red and Green succumbed to the Orange and Black. Ames carried home a 13-0 win but only after a rugged fight by the locals.

Ringin' down the curtain on the 1947 season, Boone engaged a cross-state rival, Loras Academy of Dubuque, and in freezing weather fell 14-6.

Thus, Boone completed the season with three wins, five losses, and one tie. Some of the toughest competition in the state was played which included two undefeated teams. In every game the Toreadors carried their school colors high with their perseverance and good sportsmanship.

Senior Lettermen

JIM LITTELL—Captain of this year's team, "Tiger" was a bulwark in the line both on the defense and offense. His sparkling action in conference play brought him a first-team berth on the All-Conference team. His all-around play gave him a third team rating on the I.D.P.A. team and honorable mention on Jack North's all-state team.

"CHUCK" DENNING—The offensive spark in this year's backfield, Chuck led the team from his quarterback position and ranked third in the conference scoring. He piled up an enviable record by being placed on the first All-Conference team, on Jack North's fourth all-state team, and on I.D.P.A. honorable mention list. Denning was considered one of the state's outstanding backs.

JOE KRENZ—Operating from his right guard position, "Dynamite" turned in a creditable performance in all the season's games. His spirit and aggressiveness proved to be a determining factor in many contests. He received honorable mention on the all-conference team.

BOB CLIFTON—Six feet three inches of rugged end could well describe "Pinky" whose body-shaking blocks set up many touchdowns. An "iron man," he could be depended on in every game for stopping end-a-rounds. His play garnered him honorable mention on the all-conference team.

BOB CASE—The locals' plunging fullback, Bob piled up enough yardage during the year to give him a position on the third all-conference team and a good round of cheers from the B.H.S. supporters.

Playing an outstanding game against Perry, Bob broke away for several long gains.

JIM JOHNSTONE—Although hampered by injuries, Jim was a valuable asset in our backfield. During the season he converted seven extra points out of ten attempted, and accounted for a great deal of the yardage gained on the ground.

ELDON DAHL—Even though a latecomer to the squad, "Bud" proved he was first-team material and was a mainstay of the line. A separated shoulder suffered in the Ames game kept him out of the last tilt, but up to that time he was in every game.

DICK LITTELL—Dick was one of the hold-overs from last year who proved himself a capable player time and again. The Littell brother combination was one of the sore-spots in our opponents' offensive with "Tackle by Littell" ringing out many times over the public address system.

BOB LEIDEN—Strong on defense and on the receiving end of many passes from Denning, Bob was a stand-out at his end position. In the Grinnell game he captured a 45-yard pass and a 30-yard pass which set up touchdowns. In the other games Bob was credited with a good deal of yardage from passes.

GENE BROWN—In almost every backfield there is a star, but there also is a player who does the blocking that makes this starring possible. Boone's blocking back was "Swede" whose coach rated him as one of the best. This talent gave him honorable mention on the all-conference team.

