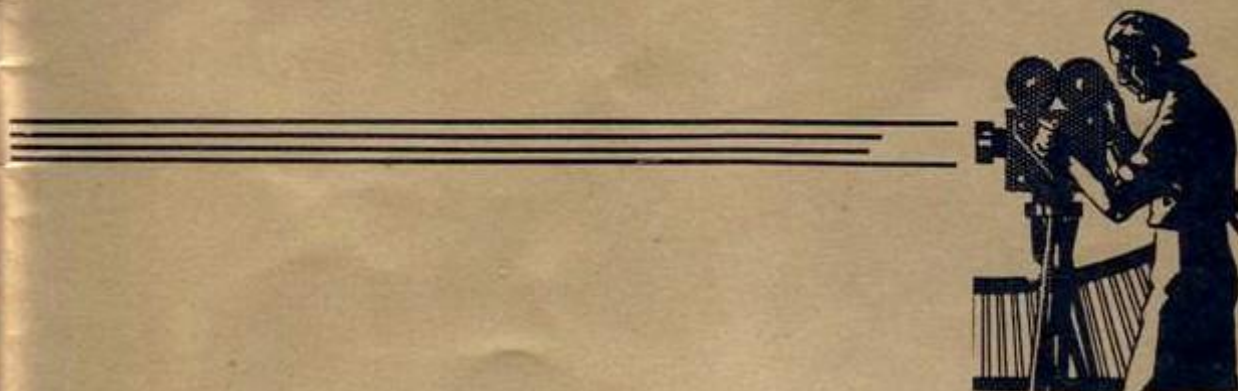


THE 1939
SCROLLETTE

50th



**THE
SCROLLETTE**

Marjorie
Broaden

1939

Published by
SENIOR CLASS
Boone High School



FOREWORD

In our endeavor to carry out the "movie" theme in this year's book, we have been challenged by a problem that confronts all producers. When able financial backing is available the picture is termed a "spectacle;" when money is scarce, the result is a "one bell picture." We have grappled with the problem of trying to produce a spectacle with only one bell backing. Frankly, we don't think it can be done.



*The Scrolllette
of 1939*



Teachers —

Michael Connolly

Hon. Economics - '38-'39

C. T. Mau "38-39"

Aris Shaler - French.

DEDICATION

To the Theatre Guild in which there is evident a little of Hollywood; which strives to make its members efficient in some phase of the theatre, whether it be acting or producing; and which tries to make the public a bit more appreciative of the drama — we, the 1939 Scrolllette Staff, dedicate this book.



SENIOR CINEMA



300 Adams
THEODORE F. ADAMS

Scientific

Student Council 2, 3; Theatre Guild 2, 3; Football 2, 3; Track 2, 3; Swimming 2.

A clown by nature, a clown by trade,
With fools like him the farces are made.

GERALDINE ADES

Commercial

Commercial Club 4, Gym Club 2.

In drama, in comedy, she's at the top.
She need never fear a far-mall drop.

MARIAN ALLEN

Commercial

Bumble "B" 1, 2, 3; Quill & Scroll 3; Theatre Guild 1, 2, 3; Girls' Glee Club 1, 2; Mixed Chorus 2; Commercial Club 3; Arts & Craft Club 3; Pep Club 1; Swimming Club 3; Cheer Leader 2; "New Fires"; "Pigs"; "Hollywood Bound".

Marian Allen, the charming coquette,
She's the best for the part we've ever had yet.

DARLENE ALLIE

Commercial

Girls' Glee Club 2; Commercial Club 2, 3.

A brown-eyed beauty of secretarial fame
Has crashed the movies just the same.

Nadine Amandus
NADINE AMANDUS

Commercial

Bumble "B" 1, 2, 3; Circulation Manager 2, 3; Quill & Scroll 2, 3; Secretary 3; Debate 1; Theatre Guild 1, 2, 3; Commercial Club 2, 3; Camera Club 2, 3; Declamatory 1; Pep Club 2.

Miss Amandus, on the screen,
Is now our finest movie queen.

AGNES ANDERSON

Commercial

Dramatic Club 3; Commercial Club 1, 2, 3; Declamatory 1, 2; Pep Club 1.

A ready smile, a helping hand,
She's one in a million in movie land.

ARTHUR ANDERSON

Commercial

Student Council 1; Football 1, 2, 3; Track 1, 2, 3; Intramural Basketball 1, 2, 3.

In high school days he played football,
But now he answers the director's call.

IRENE ANDERSON

Language

Bumble "B" 1, 2, 3, News Editor 2, 3; Quill & Scroll 2, 3; Theatre Guild 1, 2; Girls' Glee Club 1, 2, 3; Mixed Chorus 1, 2, 3; Orchestra 1, 2, 3; "Hollywood Bound".

A star reporter she longed to be,
So she joined the publicity staff with glee.

VERNAL E. ANDERSON

Scientific

Class President 3; Student Council 1, 3; Basketball 1, 2, 3; Football 3; Hi-Y 3.

Vernal has starred in many "grid" shots,
And his basketball skill has helped many plots.

DONALD ATHERTON

Scientific

Student Council 1; Boys' Glee Club 1, 3; Mixed Chorus 1, 3; Band 1, 2, 3; Orchestra 1, 2, 3; Hi-Y 2, 3.

Our man Atherton is a valuable technician;
He has skill and lots of ambition.

SENIOR CINEMA

Betty Lou Baird
BETTY LOU BAIRD

Commercial

Betty Lou Baird, a film newcomer,
Will be a star before next summer.

HELEN BAKER

Commercial

Commercial Club 3; Gym Club 3.

She's been on the stage and now on the screen.
She easily is a movie queen.

KATHERINE BARNETT

Commercial

Commercial Club 3.

To be a stenographer was her aim,
Until she got her movie fame.

GLEE BARTH

Language & Scientific

Student Council Executive Board 3; Scrollette 3; Pep Club 2;
Bumble "B" 1, 2, 3; Theatre Guild 1, 2, 3; Girls' Glee
Club 1, 2, 3; Mixed Chorus 2, 3; Orchestra 1, 2, 3; "Holly-
wood Bound"; "Campus Daze".

With her intelligence to aid,
The production staff she made.

ROY L. BECKETT

Social Science

Boys' Glee Club 3; Social Science Club 3; Agriculture Club
3; Gym Club 3.

In the extra lines he's stood to date,
All he needs is that certain "break".

OLIVE MAE BENSHOOF

Commercial

Commercial Club 3.

The costumes for the cast will grow,
As she draws her needle to and fro.

LEONE BERGGREN

Commercial

Girls' Glee Club; Commercial Club 2, 3; Pep Club 2, 3.

From Stanhope, Iowa, hails this star
Who now is known both wide and far.

MAE ARLENE BLAESS

Commercial

Chess & Checker Club 3.

Mae Arlene Blaess
Her very efficiency makes her rare;
When one's in need she's always there.

MARY JO BOSTWICK

Language

Student Council 2; Scrollette 1, 2, 3; Quill & Scroll 2, 3;
Theatre Guild 1, 2, 3, Vice President 3; Girls' Glee Club 1,
2, 3; Boys' Glee Club Accompanist 1, 2, 3; Pep Club 3;
Mixed Chorus 2, 3; Orchestra 2, 3; Gym Club 3; "Hollywood
Bound".

Musical shorts are Mary Jo's line,
And her beauty makes many a male heart pine.

CLEO BOWMAN

Commercial

Cleo is a short but hefty prop man;
He does more work than the others can.

MARJORIE BOYLES

Commercial

Student Council 1, 2; Commercial Club 2, 3; Secretary 3;
Camera Club 2, 3; Secretary 2; Gym Club 3; Pep Club 2;
Chess & Checker Club 3.

Deft with a pencil, she sketches the ad
To tell us of movies, hilarious or sad.

WILLIAM BRIERTY

Scientific

Junior Class President; Student Council 1, 2, 3; Bumble
"B" 1, 2, 3; Sports Editor 2, 3; Quill & Scroll 2, 3; Debate
3; Theatre Guild 1, 2; Boys' Glee Club 1, 2; Mixed Chorus
1, 2; Football 1, 2, 3; Intra-mural Basketball 1, 2, 3;
Swimming 2; Track 2, 3; "Hollywood Bound"; "Pigs".

He'd make a fine doctor, a lawyer too;
But without him, what would Hollywood do?

MARJORIE BROGDEN

Scientific

Student Council 1, 2; Theatre Guild 1, 2, 3; Girls' Glee
Club 1, 2, 3; Mixed Chorus 1, 2, 3; Pep Club 1, 2, 3; Cheer
Leader 2, 3; "Hollywood Bound"; "Campus Daze".

Famous for poise, famous for beauty,
She's lots of fun, this filmland "cutie".

ESTELLA MAE BRUNTON

Commercial

Bumble "B" 3; Commercial Club 2, 3; Camera Club 3.

This little miss is a star's protege,
She studies her lines and waits for "the day".

LU VERNE BUECHLER

Scientific

Boys' Glee Club 1, 2, 3; Mixed Chorus 3; Boys' Science
Club President 3; Track 3; Intra-mural Basketball 3;
Agriculture Club President 3; Chess & Checker Club 3.

This tiller of soil from "Ioway"
Is now in pictures making hay.

MARY JANE BUSS

Commercial

She owns the swankiest movie cafe,
Serving her food in a tasty way.

Ellsworth Busby
ELLSWORTH BUSBY

Scientific

Student Council 1, 3; Debate 1; Boys' Glee Club 1, 2, 3;
Mixed Chorus 1; Social Science Club 2, 3; Boys' Science
Club 2; Tennis 1, 2, 3; Intra-mural Basketball 1, 2; Pep
Club 1; Hi-Y President 2.

The greatest director of them all
Is our Busby "fair and tall".

LUCY CANAKES

Commercial

Student Council 2; Bumble "B" 1, 2, 3; Quill & Scroll 3;
Theatre Club 1, 2, 3; Girls' Glee Club 1, 2, 3; Mixed
Chorus 3; Orchestra 1, 2; Camera Club 2; Artiteers 2;
Declamatory 1; Pep Club 1, 2, 3; Sextette 3; Social Science
Club 3; Commercial Club 3.

This brown eyed lassie with raven hair
Is an actress sweet and debonaire.

SENIOR CINEMA



EDGAR CARLSON

Scientific

Student Council 3; Football 1, 2, 3; Basketball 1, 2, 3; Track 1, 2, 3; Camera Club 3.

From the football field to the football screen,
Comes our leading man who is starred with Jean.

ELAINE CARSON

Language

Student Council 1; Scrollette 1, 2, 3; Quill & Scroll 3; Girls' Glee Club 1, 2; Social Science Club Secretary 3; "Hollywood Bound".

Elaine, dancing her ballet,
To Hollywood was rushed away.

EILEEN CARTWRIGHT

Commercial

Bumble "B" 2, 3; Quill & Scroll 3; Theatre Guild 1, 2; Girls' Glee Club 1, 2, 3; Mixed Chorus 1, 2, 3; Band 1; Commercial Club 1, 2; Pep Club 2, 3; Girls' Sextette 1, 2.

Little Eileen has laughing eyes;
When she plays a part, the merriment flies.

JEAN CASE

Social Science

Student Council 3; Bumble "B" 2, 3; Quill & Scroll 3; Theatre Guild 1; Social Science Club 3; Arts & Craft Club 2; Declamatory 2; Pep Club 1, 2, 3; Home Economics Club President 3.

No joke would be quite out of place
According to our comedienne, Case.

KENNETH CHRISTOPHERSON

Commercial

With his twinkling eyes and merry grin,
He's the best "Romeo" that ever has been.

Margaret Conant

MARGARET CONANT

Commercial

Bumble "B" 2, 3; Commercial Club 3; Social Science Club 2, 3; Pep Club 1, 2, 3.

Many times you have seen her "stunt act,"
She's a peppy gal, and that's a fact.

ERNEST CONDON

Social Science

Track 2; Football 1, 2; Intra-mural Basketball 3; Hi-Y 2.

Long ago he was nicknamed "Jug,"
And now in the "stooge" shorts he plays the "mug."

JAMES COOK

Social Science

Student Council 3; Theatre Guild 2, 3; Social Science Club President 3; Football 1, 2, 3; Basketball 1; Intra-mural Basketball 2, 3; Swimming 1; Gym Club 3.

His body perfection, his looks just right,
Jimmy's the stooge who's not quite bright.

DONALD CORRICK

Social Science

Boys' Glee Club 2; Gym Club 3; Chess & Checker Club 3.

Don refused a contract from a movie scout
Because he'd have to quit his paper route.

ROBERT CRANMER

Scientific

Student Council 2; Boys' Glee Club 1, 2; Mixed Chorus 1, 2; Arts & Craft Club 2; Football 1, 2; Swimming 2, 3; Tennis 1, 2, 3; Swimming Club 3; Hi-Y 2, 3; "Hollywood Bound."

In a big green auto he always rides,
And poses for Plymouth ads besides.

SENIOR CINEMA

FLORENCE CRAVEN

Commercial

Home Economics Club 3.

A star was born and it was she.
At Boone High this we did foresee.

WAYNE CROUCH

Social Science

Theatre Guild 1; Intra-mural Basketball 2, 3; Hi-Y 1, 2.

As a faithful extra he is known
Waiting for a call on the telephone.

BYRON DAVIS

Scientific

Band 1, 2, 3; Camera Club 1; Orchestra 1, 2, 3; Hi-Y 1.

On the screen, you have often met
Byron and his clarinet.

ROBERT DENNERT

Scientific

Student Council 3; Boys' Glee Club 1, 3; Mixed Chorus 3;
Band 1, 2, 3; Orchestra 1, 2, 3; Social Science Club 3, Boys'
Science Club Vice-President 3; Agriculture Club 3.

Although on his cornet Bob can hit "high C"
I'm afraid we'll never see Stokowski be.

AVIS DODGE

Scientific & Language

Class Secretary 1; Bumble "B" 1, 2, 3; Quill and Scroll
1, 2, 3; Theatre Guild 1, 2, 3; Girls' Glee Club 1, 2, 3;
Mixed Chorus 3; Girls' Science Club 2; Camera Club 2;
Artiteers 2, 3; President 2; Declamatory 1, 2, 3; "Holly-
wood Bound"; "Campus Daze"; "Deferential Kindness".

In her studio she sits all day.
Designing for the cast so gay.

LOIS DONALDSON

Scientific

Bumble "B" 3; Band 1, 2, 3; Band Secretary 2; Orchestra
1, 2, 3; Secretary 3; Girls' Science Club 2, 3.

Band and orchestra were her delight;
So, now she composes new lyrics so bright.

JACQUELINE DORAN

Scientific & Language

Bumble "B" 1, 2, 3; Quill and Scroll 3; Theatre Guild 1,
2, 3; Orchestra 1, 2, 3; Arts and Craft Club Treasurer 3;
Artiteers 1, 2, 3; Pep Club 1, 2; Swim Club 3.

Jac is an actress, a cellist too;
There aren't many things this gal can't do.

MARIE EATON

Arts & Crafts

Theatre Guild 3; Camera Club 3; Arts & Crafts Club 3;
Art 3; Declamatory 1; Pep Club 1, 2.

Drawing is her special gift.
It gives the movies really a lift.

WALTER EHMAN

Agriculture

Social Science Club 3; Football 1, 2, 3; Agriculture Club 3.

A property man is in constant need.
In this field Walter will succeed.

ERNEST EISERMAN

Social Science

Intra-mural Basketball 3.

He sorts the files and answers the phone;
All the stars' addresses to him are known.

LUCILLE ELSBERRY

Commercial

Commercial Club 3; Gym Club 3.

Tho on every side pandemonium reigns,
Our script girl, Lucille, calm and collected remains.

NORMA ERICKSON

Commercial

Commercial Club 3; Gym Club 3.

Blond, pretty and very petite
She treads the set with graceful feet.

DOROTHY EVERTS

Scientific

Camera Club 2; Gym Club 3.

Rings in her ears, bells on her toes,
She will make movies wherever she goes.

LOUISE FEITH

Commercial

Commercial Club 3; Gym Club 3.

In comedy shorts you've seen her a lot
For she is the one who involves the plot.

KENNETH FINCH

Scientific

Bumble "B" 2, 3; Theatre Guild 2, 3; Band 1, 2, 3;
Swimming 3.

A chemical man we need in this trade,
Developing film the photographers made.

WANDA FRONSDAHL

Scientific

Bumble "B" 3; Girls' Glee Club 1, 2, 3; Girls' Science Club
2; Gym Club 3; Pep Club 2; "Hollywood Bound"; "Campus
Daze".

A designer's assistant is she,
But someday a chief she will be.

DOROTHY GROTH

Commercial

Commercial Club 3; Girls' Gym Club 3; Chess & Checker
Club 3.

Blonds are to Hollywood as the sun to the day;
She earns her keep in this very way.

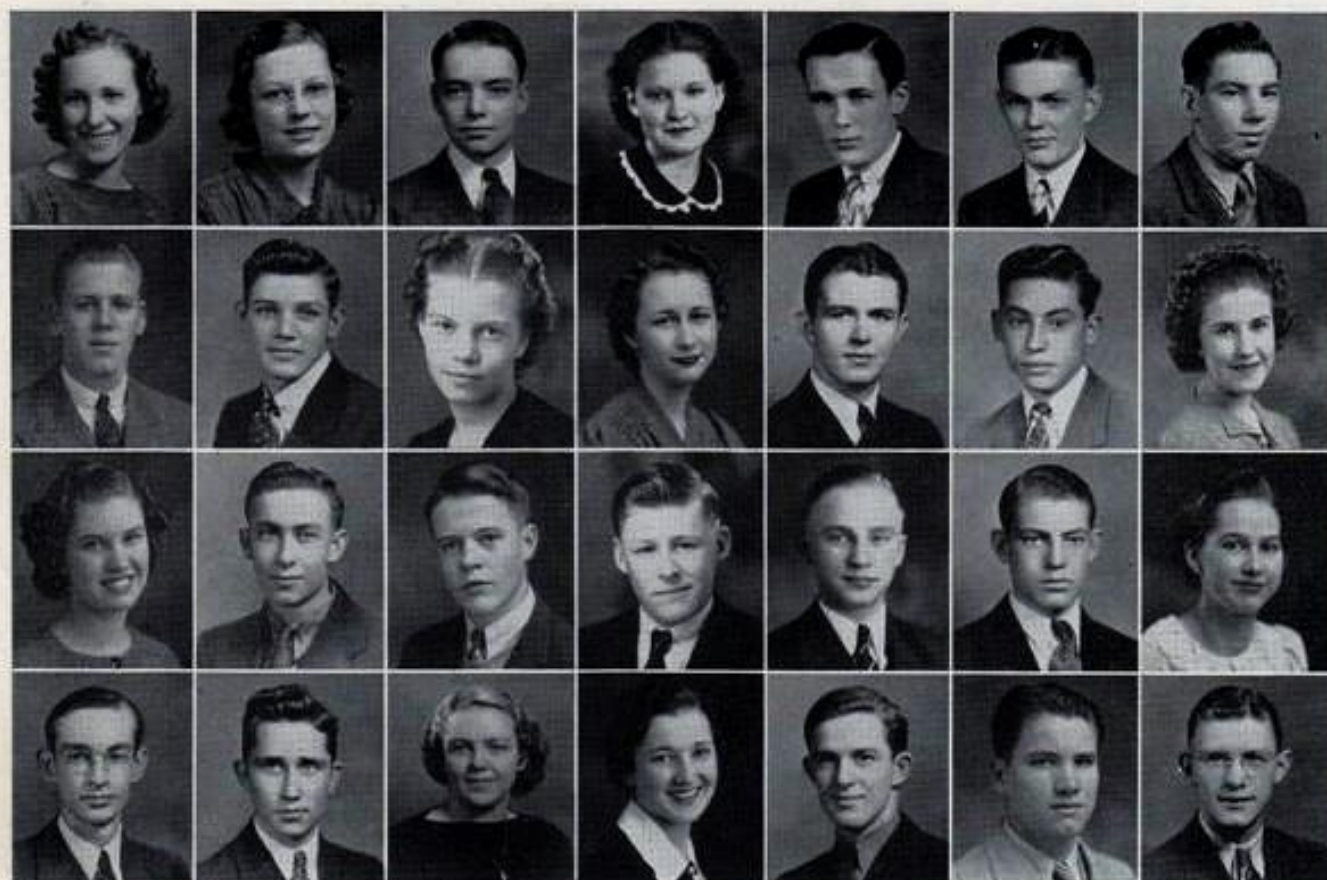
MARJORIE HAMMOND

Language

Debate 3; Dramatic Club 1, 2, 3; Girls' Glee Club 1, 2;
Social Science Club Vice-President 3; Declamatory 1, 2, 3;
Original Oratory 2; Cheerleader 3; "Hollywood Bound".

"Marjy" a voice of beauty possesses;
Her box-office returns the producer blesses.

SENIOR CINEMA



Elizabeth Handrich
ELIZABETH HANDRICH

Commercial

Student Council 2; Scrollette 2, 3; Bumble "B" 1; Quill & Scroll Theatre Guild 2, 3; Girls' Glee Club 1, 2; Commercial Club 2, 3, Vice-President 3; Pep Club 2, 3; "Hollywood Bound".

Nursing was her chosen profession,
Now she is starred in "Magnificent Obsession."

RACHEL JEAN HANSON

Language

Bumble "B" 1, 2, 3; Quill & Scroll 2, 3; Debate 1; Girls' Glee Club 1, 2, 3; Boys' Glee Club Accompanist 3; Mixed Chorus 2; Orchestra 1, 2, 3; Camera Club President 3; Declamatory 1, 2; "Hollywood Bound", "Campus Daze".

She tickled the ivories at old Boone High,
And now her luck on the screen she'll try.

DON HARKER

Commercial

Theatre Guild 1, 2, 3; Bumble "B" 3; Band 1, 2, Drum Major; Arts & Craft Club 1, 2; Football Manager 1.

He drives a car for a big film man,
And flirts with the stars whenever he can.

June Hickie
JUNE HICKLE

Commercial

Commercial Club 3.

Her stately way has brought her here;
Her box-office draw will keep her near.

DARREL HICKMAN

Social Science

A quiet way conceals his zest
That makes his pictures always the best.

CLAYTON HENDRICKS

Social Science

Student Council 2; Theatre Guild 2, 3; Football 1, 2, 3; Track 3; Intra-mural Basketball 1, 2, 3; Swimming 1; Gym Club 3.

His actions are graceful; all girls he does please
As he woos his lady on bended knees.

JOE HILDRETH

Scientific

Swimming Club 3.

A silent man has uses here, too;
He lends advice as wise men do.

Allen Hilliard
ALLEN HILLIARD

Scientific

Camera Club 2, President 3; Football 1; Swimming 2; Golf 2; Chess & Checker Club Treasurer 3.

Blond and romantic, he's a box-office draw.
He goes through his lines with narry a flaw.

RONALD HINRICH

Social Science

Student Council 3; Bumble "B" 1, 2, 3; Quill & Scroll 2, 3, President 3; Theatre Guild 2, 3; Declamatory 1, 2, 3; Football 1, 2, 3; Hi-Y 2, 3, President 3.

Experience in acting, and very good looks,
These are his credits in our movie books.

MARJORIE HITSMAN

Commercial

Commercial Club 3; Gym Club 3.

This young miss is sure to be seen
In the city on the screen.

SENIOR CINEMA

DE NOLA HOFFMAN

Commercial

Commercial Club 3; Gym Club 3.

He ace as the typewriter, deft in shorthand
She takes notes at the producer's right hand.

EVERETT HOFFMAN

Social Science

Because he is so very loquacious
The public to him is very gracious.

JACK HOHANSHELT

Scientific

Football Manager 1, 3; Basketball 1; 2, 3; Track 1, 2, 3.

A football coach he meant to be;
But Hollywood called and he came, you see.

IONE HOLSTRUM

Commercial

Student Council 2, 3; Theatre Guild 1, 2, 3; Girls' Glee Club 3; Debate 1; Commercial Club 1, 2, 3; Declamatory 1, 2, 3.

A voice superb, an actress skilled,
You can see crowds wherever she's billed.

BETTY JEAN HORA

Commercial

Bumble "B" 2, 3; Commercial Club 1, 2, 3; Camera Club 3; Pep Club 2, 3.

A stenographer we thought she'd be,
But a perfect script-girl now is she.

MERLE HUBBY

Scientific

Gym Club 3; Chess & Checker Club 3; Intra-mural Basketball 3.

He's the mayor of Hollywood, a quiet man;
And he is our most ardent fan.

LAURENCE HULL

Commercial

Chess & Checker Club 3; Stamp Club 3.
Small, but mighty, a Napoleon today,
He runs his studio in an efficient way.

JOHN HUSS

Scientific

He shoots the scenes with as cool a head
As if he were driving his car instead.

WARREN ISAACSON

Commercial

Track 2; Agriculture Club 3; Gym Club 3.

Another farmer from "loway"
Will go far in films, the columnists say.

WALTER C. JENKINS

Agriculture

Swimming Club 3; Agriculture Club Secretary 3.

His high school 'chem' class was not in vain
For, on location, he makes it rain.

ANNA L. JOHNSON

Language

Bumble "B" 1, 2, 3; Quill & Scroll 3; Commercial Club 2, 3; Stamp Club 3.

One of the sweetest in our mad movie town,
In all this time I have never seen her frown.

DUBOIS JOHNSON

Language

Scrollette 3; Bumble "B" 1, 2, 3; Quill & Scroll 3; Debate 1, 2; Theatre Guild 2, 3; Social Science Club 3; Hi-Y 1, 2.

DeBois is our clever sound effects man;
He works out the noises that we plan.

JOHN JOHNSON

Scientific

Student Council 1, 2; Boys' Glee Club 2, 3; Mixed Chorus 3; Intra-mural Basketball 2; Hi-Y 3.

With profile divine and voice unique,
All he lacks is that certain technique.

MARTHA ANN JORDAN

Language

Student Council President 3; Theatre Guild 1, 2, 3, President 3; Declamatory 1, 2, 3; Pep Club 2; Swimming Club 3; "Pigs".

In school we were enraptured once she did speak;
Now on the screen she enraptures the shiek.

MILDRED KNEZEVICH

Commercial

Gym Club 3.

This miss is our roller skating star;
She does intricate turns and figures bizarre.

WARREN KRUCK

Social Science

Declamatory 3; Football 3; Intra-mural Basketball 3; Track 3; Swimming 3.

As a publicity man he ought to be fine,
Helping the stars put over their line.

EARL LANG

Scientific

Social Science 3; Football 1, 2; Track 1, 3; Gym Club 3; Chess & Checker Club 3.

He looks at screen tests and helps decide
Which of the players to success will ride.

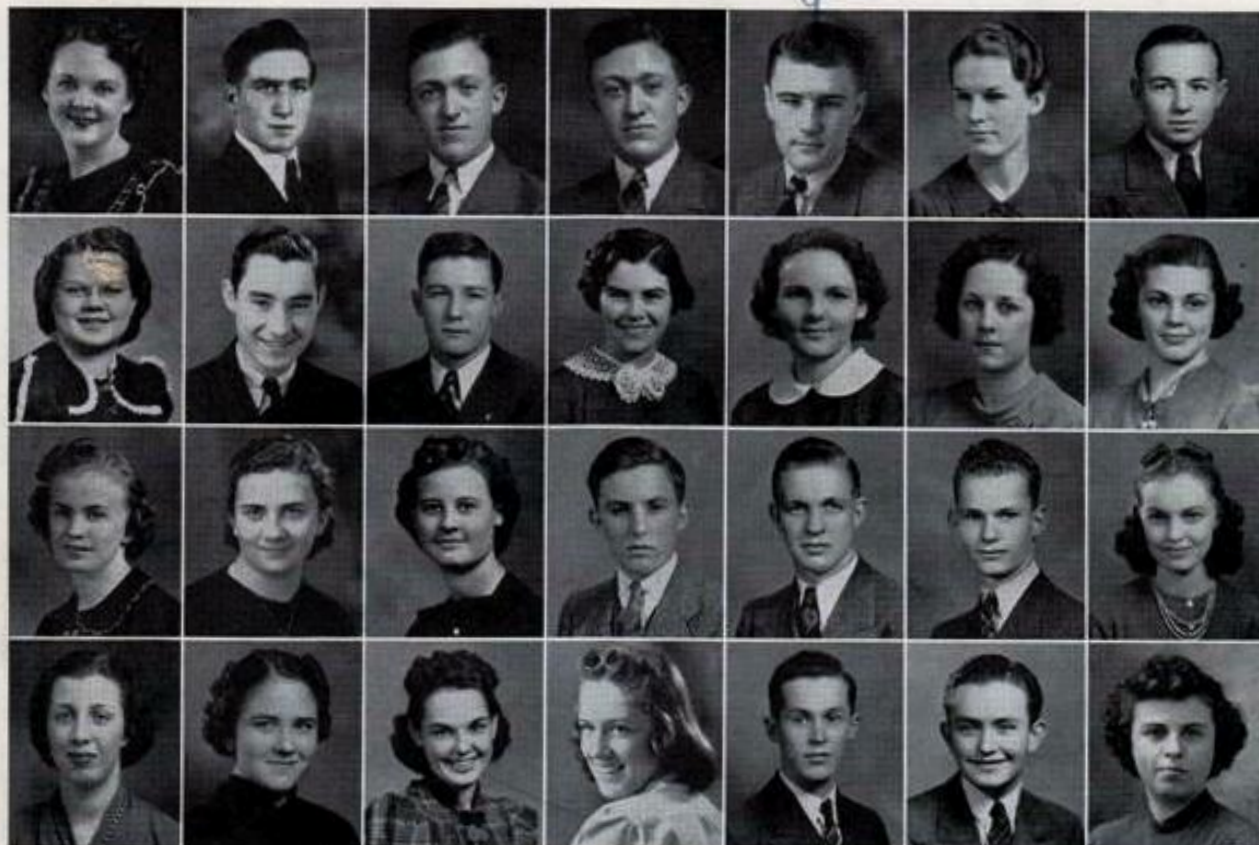
ARTHUR LANTZ

Scientific

Student Council 3; Boys' Science Club President 3; Football 1, 2; Tennis 2, 3; Radio Club President 3; Swimming Club 3.

He takes the money and plans the cost;
Without this man, many films would be lost.

SENIOR CINEMA



NORMA JEAN LEAVENS

Commercial

Theatre Guild 1, 2, 3; Girls' Glee Club 1, 2, 3; Mixed Chorus 2, 3; Commercial Club 2; Social Science Club Vice-President 3; Pep Club 1, 2, 3.

She outshines all as a cosmetician;
Her folks at home thought her a musician.

ARTHUR LEBO

Scientific

Swimming Club 3; Football 2, 3; Intra-mural basketball 2, 3.

Day after day with death he does flirt,
But never yet has he been hurt.

RAY M. LEBO

Scientific

Student Council 3; Boys' Glee Club 2, 3; Mixed Chorus 3; Boys' Science Club 3; Intra-mural Basketball 3; Pep Club 2; Agriculture Club 3.

Here we have a Lebo starring this day,
Will someone please tell us if it is Ray?

ROY A. LEBO

Scientific

Boys' Glee Club 2, 3; Mixed Chorus 3; Boys' Science Club 3; Intra-mural Basketball 3; Pep Club 2; Agriculture Club 3.

Here is another Lebo in our employ,
But how can we tell if it is Roy?

JUNIOR LITTELL

Social Science

Intra-mural Basketball 3; Football 1, 2, 3; Basketball 1, 2; Tennis 2, 3; Hi-Y 2; Chess & Checker Club 3.

Tall, dark, and handsome without a doubt,
Yet he is now a movie scout.

MARY E. McALPINE

Commercial

Commercial Club 1, 2, 3; Secretary 3; Gym Club 3; Chess & Checker Club 3.

She was a tomboy, but not any more;
As a film fine lady, her career does soar.

JOHN McCAMBRIDGE

Scientific

Sophomore President; Student Council 1, 2, 3; Theatre Guild 1, 2; Boys' Glee Club 1, 2; Band 1; Orchestra 1; Boys' Science Club 2; Football 1, 2, 3; Swimming 2; Tennis 1, 2, 3; Basketball Manager 3; "Hollywood Bound."

Because Jackie is always in trouble
He's going to be Charlie McCarthy's double.

NANNA JEAN McCASKEY

Social Science

Student Council 2; Girls' Glee Club 1, 2; Social Science Club 3; Pep Club 3; Life Guard 3.

A Hollywood restaurant she will run,
And there the stars will have their fun.

RAY McCOY

Commercial

Social Science Club 3; Extemporaneous Speaking 2; Football 1.

This eloquent actor has surely made
His place at the top, stable and staid.

RAYMOND McINTOSH

Scientific

Student Council 1, 2, 3; Theatre Guild 2; Boys' Glee Club 2; Social Science Club 2, 3; President 3; Football 2, 3; Basketball 2, 3; Track 2, 3; Gym Club 3; Intra-mural Basketball 1.

In football he was very fine;
Now for his autograph we pine.

SENIOR CINEMA

FRANCES McINTYRE

Commercial

Theatre Guild 3; Girls' Glee Club 1, 2, 3; Mixed Chorus 1, 2, 3; Commercial Club 1, 2; Camera Club 2; Pep Club 2; Girls' Sextette 1, 2; "Hollywood Bound"; "Campus Daze".

While we were in high school, we heard her sing;
Now with the movies, she's taking her fling.

LILLIAN McMAHON

Commercial

Camera Club 2; Swim Club

Small and wiry, and very dark,
As a child "quedny" she made her mark.

VIVIAN McVICKER

Commercial

Sooty and sweet, her big guitar rings,
Blending so well when Vivian sings.

EVELYN MARTIN

Commercial

Bumble "B" 2; Scrollette 3; Theatre Guild 1, 2, 3; Commercial Club 1, 2, 3; Student Council 1, 2.

Miss Martin is a talented authoress,
Her plays are always a big success.

FRANCES MATHSON

Social Science

This little girl now you'll see
Playing the roles of dignity.

JANE MAUCK

Language

Student Council 3; Theatre Guild 1, 2, 3; Girls' Glee Club 1, 2, 3; President and Student Director 3; Mixed Chorus 1, 2, 3; Orchestra 1, 2, 3; "Hollywood Bound."

In the American opera, she made her debut;
In the movies, she sings for me and you.

DOROTHY MILES

Commercial

Theatre Guild 3; Girls' Glee Club 1, 2, 3; Mixed Chorus 3; Commercial Club 3; Social Science Club 3; Pep Club 2; Life Guard 3.

A voice supreme; she is a dream;
In lights her name will always gleam.

JOHN MILES

Social Science

Social Science Club 3; Intra-mural Basketball 3; Basketball Junior Manager 2.

Sure and quiet, a carpenter skilled,
Fine are the sets that he does build.

MILO MILLER

Social Science

Senior Class Vice-President; Student Council 3; Football 1, 2, 3; Captain 3; Track 1, 2, 3; Intra-mural Basketball 1, 2, 3.

That tall blond hero of ability,
A football captain used to be.

WARREN MONDT

Scientific

Band 1, 2, 3; Boys' Science Club 3.

With his drums he crashed our city,
If he ever leaves, it would be a pity.

DOROTHY MOORE

Commercial

Senior Class Secretary; Student Council 2; Bumble "B" 1, 2, 3; Girls' Glee Club 1, 2; Commercial Club 1, 2, 3; Camera Club 3; Pep Club 2; "Hollywood Bound."

Dorothy's talents are most alarming;
And, besides, she's very charming.

MAXINE MUNN

Commercial

Girls' Glee Club 3; Commercial Club 2, 3.

The piano she plays for a dancing queen,
So on the screen she's seldom seen.

DOROTHY ANN O'CONNELL

Commercial

Student Council 1; Bumble "B" 3; Commercial Club 3; Camera Club 2; Pep Club 1.

She's tapped her way to cinema fame,
High honors in dancing she may claim.

AUDREE OLSON

Language & Scientific

Scrollette 2, 3; Editor 3; Bumble "B" 1, 2; Quill & Scroll 2, 3; Theatre Guild 1, 2, 3; Girls' Glee Club 1, 2, 3; Librarian 3; Mixed Chorus 2, 3; Artiteers 2; Pep Club 1, 2; "Deferential Kindness", "Hollywood Bound", "Campus Daze".

Tall and dark, an eye for clothes;
Our Scrollette Editor everyone knows.

DELORES OLSON

Commercial

Theatre Guild 2, 3; Girls' Glee Club 2, 3; Mixed Chorus 3; Commercial Club 1, 2.

Delores dresses hair on the stage,
Her charming colffeurs are all the rage.

RICHARD OSBORNE

Social Science

Many a fair maid he does entice;
Without care or worry he goes through life.

ROBERT PALMER

Commercial

Social Science Club 3; Pep Club 3.

Of the city slicker, he takes the part
Slyly stealing his lady's heart.

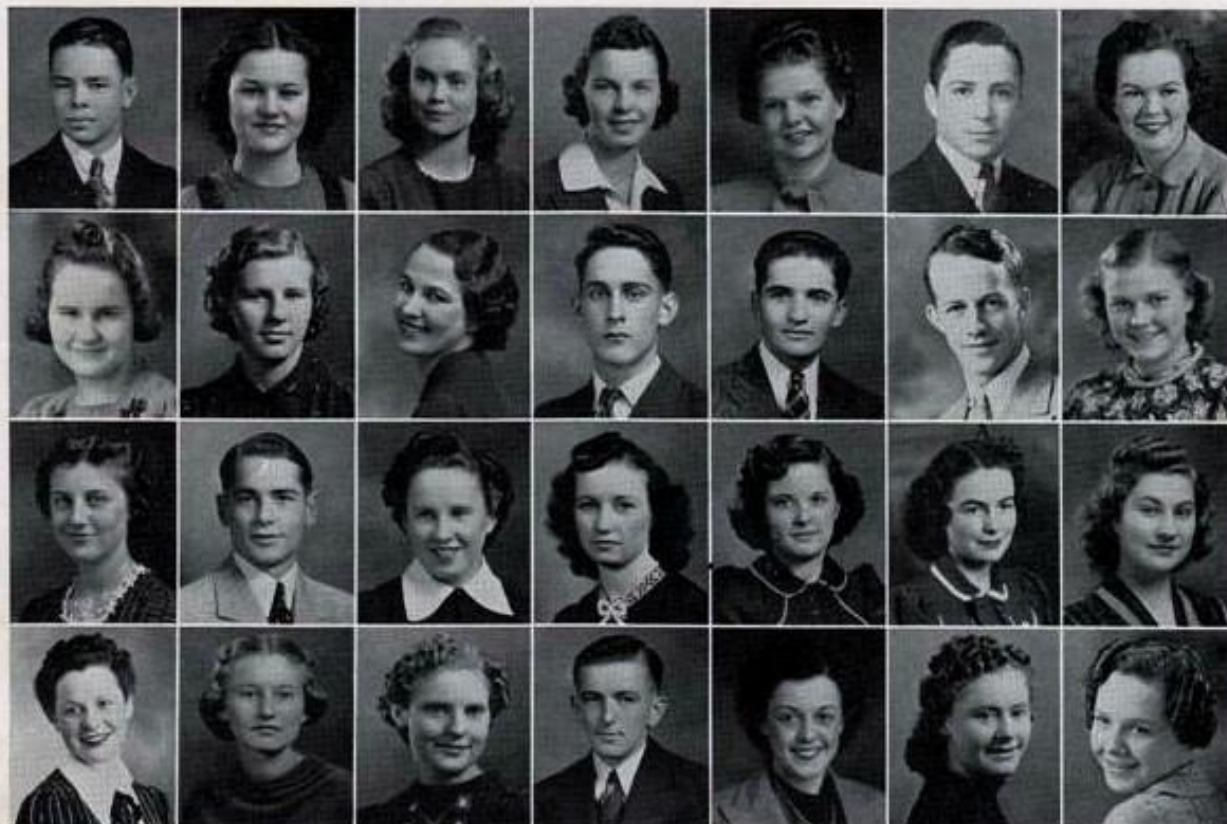
THELMA PAPPADOLOS

Commercial

Commercial Club 2, 3; Pep Club 2, 3.

A shorthand expert she could be,
But to Hollywood she soon will flee.

SENIOR CINEMA



CLIFFORD PARRISH

Scientific

Social Science Club 3; Boys' Science Club 3; Arts & Craft Club 3; Gym Club 3.

His uncle dealt in sand, but that's not for "Speck,"
As a stunt man in the movies he will risk his neck.

Evelyn Parrish
EVELYN PARRISH

Commercial

She dresses the stars and dreams of the day
When she will star in a Hollywood play.

MARY PAULSON

Commercial

Student Council 2, 3; Commercial Club 3; Pep Club 2; Gym Club 3.

Her beautiful hair we'll all admire;
Of her face on the screen, we'll never tire.

MURIEL PEARSON

Scientific

Bonnie "B" 1, 2, 3; Quill & Scroll 3; Debate 1; Theatre Guild 1, 2; Girls' Glee Club 1, 2; Artisans 2, 3; Pep Club 2; "Hollywood Bound;" Mixed Chorus 1, 2.

Tall, tan, and terrific without a doubt,
"Mimi's" the prize of any talent scout.

Anna Lou Pendarvis
ANNA LOU PENDARVIS

Language

Camera Club 2; Pep Club 2; Home Economics Club 3.

Her fingers know the fabric's feel;
Her knack in designing has surely proved real.

CHARLES PESTOTNIK

Social Science

Football 1, 2, 3; Track 2; Chess & Checker Club 3; Stamp Club 3.

In Boone High School he was a football star,
Here, as a prep man, he has gone far.

MARGARET ANN PETERS

Commercial

Student Council 2, 3; Scrollette 2, 3; Bumble "B" 1; Quill & Scroll 3; Theatre Guild 1, 2, 3; Girls' Glee Club 2; Commercial Club 2, 3; Social Science Club 3; Pep Club 2, 3; "Hollywood Bound."

Margaret appreciated beauty so fine
That now she makes up the actors divine.

Mary Frances Petersen
MARY FRANCES PETERSEN

Social Science
& Scientific

Scrollette 3; Commercial Club 1; Artisans 3; Pep Club 2.

A Chevrolet heiress she may be,
Now on the screen, she's welcomed with glee.

Vida Mae Petersen
VIDA MAE PETERSEN

Social Science

Band 1, 2, 3; Orchestra 2, 3; Declamatory 3; Gym Club 3; Swimming Club 3.

As a bass viol slapper she's quite a slayer
Making eyes at the French horn player.

VIOLA ELIZABETH PETERSON

Social Science

Theatre Guild 3.

A wardrobe mistress, clean and neat,
She clothes the stars from head to feet.

SENIOR CINEMA

JOE PHIPPS

Commercial

Social Science Club 3; Boys' Science Club 1; Gym Club 3; Track 2.

He's the very best prop man we've ever had.
He came from Iowa when only a lad.

HUGH POWERS

Scientific

Basketball 2, 3; Golf 2, 3; Swimming Club 3; Hi-Y 2, 3.

Huchy can all the "booful" gals win.
With his wavy black hair and mischievous grin.

ERNEST PRITCHARD

Commercial

Ernest does the office work; he's the director's
right hand,
To him the very law is his boss's command.

HELEN RANARD

Social Science

Theatre Guild 3; Commercial Club 1.

Helen was always a movie fan,
And now on the screen she "gets her man."

RUTH RASMUS

Commercial

Girls' Glee Club 1, 2, 3; Orchestra 1, 2, 3; Commercial Club 1,
2, 3; Camera Club 3; "Hollywood Bound."

Her flawless complexion all the girls adore,
And on the screen we admire her more.

ROBERT RAY

Commercial

Band 3; Arts & Craft Club 3; Hi-Y 3.

He fights the Indians in the Wild West Show.
He learned how at Tama many years ago.

DORIS REDFIELD

Commercial

Bumble "B" 3; Commercial Club 2, 3; Pep Club 3; Theatre
Guild 3.

A truly great dancer, she's bound to succeed,
On dancers like this musical comedies feed.

JUANITA REED

Commercial

Gym Club 3; Commercial Club 2.

The maid to a star has a tremendous task.
But in success at this, Juanita does bask.

WANDA RICHMOND

Scientific

Scrollette 2, 3; Quill & Scroll 2, 3; Secretary 3; Theatre
Guild 1, 2; Girls' Glee Club 1; Orchestra 1, 2, 3; Girls'
Science Club 2; Gym Club 3; Pep Club 2; "Hollywood
Bound."

Wanda Richmond, a famous musician
In our film band has a position.

ALBERTA ROBERTSON

Social Science

Student Council 3; Theatre Guild 3; Band, Drum Major 2, 3.
Here is the drum major of our band,
Proclaimed the best in all the land.

MARY LEE ROSENGREEN

Scientific

Bumble "B" 1, 2, 3; Quill & Scroll 2, 3; Debate 1; Theatre
Guild 1, 2; Girls' Glee Club 1, 2, 3; Mixed Chorus 3; Girls'
Science Club 2; Declamatory 1, 2; Pep Club 2; "Hollywood
Bound," "College Daze."

With a cool head and steady hand,
She's an assistant director, always in demand.

LOUISE SAYRE

Commercial

Debut 1; Gym Club 3; Girls' Glee Club 3; Orchestra 1;
Commercial Club 2; "College Daze."

Miss Sayre is our beautician supreme;
She dresses the hair of our movie queen.

JEAN SCHROEDER

Commercial

Bumble "B" 3; Commercial Club 2, 3; Camera Club 3; Gym
Club 3; Pep Club 3.

Jean was so sweet, we all would vow,
So the M. G. M. has found her now.

LEAH SCHULTZ

Commercial

Scrollette 2, 3; Theatre Guild 3; Commercial Club 2, 3;
Social Science Club 3; Pep Club 2.

Our charming lady, so petite,
Now on the screen we often greet.

RICHARD SHAEFFER

Scientific

Boys' Science Club 2; Football 2, 3; Track 2; Chess &
Checker Club 3; Boys' Gym Club 3.

This chemistry shark of high school days
Now with make-up in Hollywood plays.

ONEDA SHELLHART

Commercial

Commercial Club 3.

She loved to play her old guitar;
Now of the westerns she's a star.

HELEN SHORT

Commercial

Commercial Club 3; Girls' Science Club 3.

You'll find Helen in the chorus;
There, I trow, she'll never bore us.

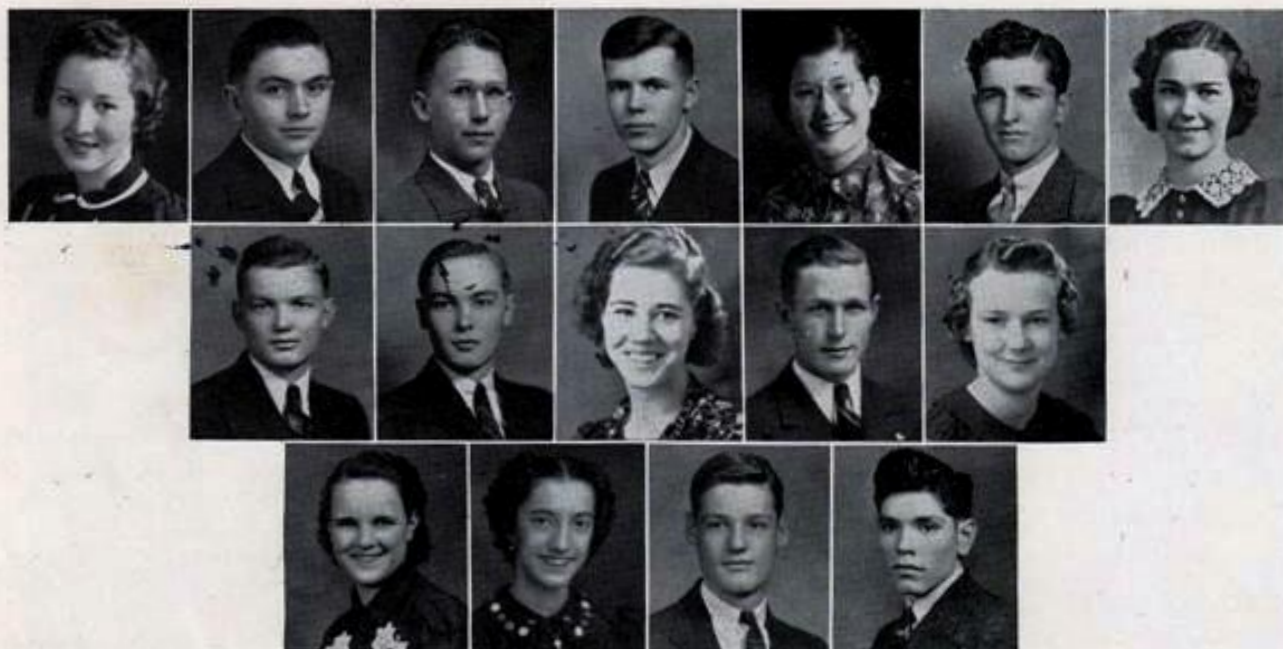
PAULINE SMITH

Commercial

Girls' Glee Club 3; Commercial Club 3.

Commerce was her special line—
For the movies, she'll resign.

SENIOR CINEMA



FERNE STANDLEY

Commercial

Commercial Club 2, 3; Treasurer 3; Artiteers 2, 3.

From the farm, she's come a long way.
The best of her pictures was released today.

ROGER SULLIVAN

Commercial

Student Council 1, 2, 3; Theatre Guild 2, 3; Boys' Glee Club 3; Football 2, 3; Basketball 1, 2, 3; Track 1, 2, 3.

Rog is an Irishman, straight and dark.
He gives the movies a lively spark.

FRANCIS STATTON

Scientific

Student Council 1, 3; Boys' Science Club 2; Football 1, 2, 3; Swimming Manager 2, 3.

He's got the brains; he's got the knack—
All that it takes to bring in the "jack."

DORIS SUNDEEN

Commercial

Commercial Club 3; Gym Club 3.

A pencil is magic in her hand;
Her art work for films is in demand.

FLOYD R. STEBBEDS

Social Science

Agriculture Club 3.

He learned about farming and it helps him now;
The farm scene he arranged was really a wow.

CHARLES SWANSON

Social Science

Student Council 3; Swimming 3.

In school he made the girls' hearts flutter,
Now through his love scenes he does stutter.

DONN H. STEWARD

Scientific

Theatre Guild 1, 2, 3; Treasurer 3; Arts & Craft Club 3; Artiteers 2, 3; Hi-Y 2, 3, Vice-President 3; "New Fires."

Teamed with Walt Disney, he draws Mickey Mouse,
And Clara Belle Cow scratching a louse.

LAUREN TAYLOR

Scientific

Student Council 1; Debate 1, 2, 3; Boys' Science Club 2; Pep Club 1; Hi-Y 1, 2.

Carrots is a stunt man; he drives a wicked car.
His recklessness and courage are known both
wide and far.

HELEN SUBLETT

Scientific

Gym Club 3; Camera Club 3.

A fine athletic type is she;
In many a collegian role she'll be.

ANNABELLE THEDE

Commercial

Commercial Club 3; Gym Club 3.

Though fame to an extra seems far away,
Some day lady luck will come her way.

SENIOR CINEMA

EARL THOMPSON

Commercial

To injured artists he gives first-aid,
And for this work he's very well paid.

RUTH TIGERSTROM

Commercial

Dep Club 1, 2.

Sonja Henle of the ice rink is queen,
But on the roller rink, Ruth is seen.

VILA TITMAN

Commercial

Commercial Club 3.

As a make-up artist, she knows her trade,
Under her care actors never fade.

JUANITA TOLLIVER

Commercial

Commercial Club 3; Home Economics Club 3.

The tiniest girl in all film land,
As the movie's "child darling" she goes over grand.

EDGAR UPDEGRAFF

Scientific

Science Club 1; Boys' Glee Club 1; Mixed Chorus 1; Band
1, 2, 3; Orchestra 1; Golf 1, 2, 3; Swimming 2, 3; Chess &
Clubs Club; Scholastic Club; "The Chess Round."

Edgar Updegraff is movie's golf king;
He strikes the ball with a hefty swing.

JOE UBALLE

Scientific

Football 3.

With wit so droll and speech so slow;
They say he'll star, and it must be so.



SENIOR CLASS WILL

We, the senior class of 1939, of the first party, being sound in mind and light in feet at the time of drawing up this last and final will and testament, do hereby bequeath to the future seniors of Boone High of the second party the sum and total of our mental, physical, and tangible possessions contained in the following:

- Item: Our rousing school spirit, our leadership, our ability to be merry, and our social position we leave to the graduating class of '40.
- Item: The senior class bequeaths Jack Nordstrom to the junior class in the hope that he may make better progress with them.
- Item: "Bud" Kruck leaves his many debts accumulated during the past year to the whole junior class in the hope that by pooling their resources they will be able to pay them.
- Item: DuBois Johnson and Ellsworth Buzby will their capacity for the enjoyment of a full evening to Eugene Standley and Raymond Eytcheson.
- Item: To Joan Wilson, Jacqueline Doran leaves Frank Linderblood's address, Zahm Hall, Notre Dame University. (Or perhaps Martha Ann Jordan thinks she should leave it.)
- Item: Ted Adams leaves his ability to break furniture in other peoples' homes to Everett Casey.
- Item: Glee Barth rather begrudgingly leaves a part of her "interest" in Eagle Grove to anyone who has the ability to get that interest.
- Item: To Harlan Herrick and his bicycle, Bob Palmer leaves his ability to "clip" cars.

(Continued on page 17)

SENIOR CINEMA



MARY KATHRYN VEALE

Commercial

Theatre Guild 1, 2, 3; Girls' Glee Club 1, 2, 3; Mixed Chorus 1, 2, 3; Girls' Sextette 1, 2; Commercial Club 1, 2; Pep Club 2.

Beautiful is her melody,
As all the movie men agree.

MARIGENE WALKER

Commercial

Commercial Club 1, 2, 3, President 3; Gym Club 3.

Marigene Walker has glamorous hair;
You see it in films most everywhere.

BEULAH WARMAN

Scientific

Camera Club 3; Swim Club 3.

Beulah's name has a poetical lilt,
But by hard work and skill her career is built.

LOUIS WEBER

Scientific

Student Council 2, 3; Basketball 1, 2, 3; Football 3; Track 1, 2; Intra-mural basketball 3.

He once had an act in a medicine show,
Until into Hollywood he one day did blow.

JANICE WEGELE

Commercial

Student Council 1; Double "B" 1, 2, 3; Quill & Scroll 2, 3; Theatre Guild 1; Girls' Glee Club 1, 2, 3; Mixed Chorus 2, 3; Commercial Club 2; Declamatory 1; Pep Club 1; "Hollywood Bound."

Janice, many of our plays does write;
Over her stories the studios fight.

MARYLYN WHEELER

Commercial

Student Council 3; Girls' Glee Club 1, 2; Commercial Club 2, 3; Gym Club 3; Swimming Club 3.

For her a promising future is seen
As she writes the script for "Here Comes the Queen."

GERALDINE WICKMAN

Commercial

In aeronautics she avoids a wreck;
Nothing is quite too dangerous for "Check".

KENYON WISSLER

Scientific

Boys' Glee Club 3; Track 2; Intra-mural Basketball 3; Hi-Y 2.

New names, new faces are his game;
For as a talent scout he's won his fame.

DUDLEY WOLFE

Social Science

Football 1, 3; Intra-mural Basketball 3.

Day after day he shouts, "Lend me a hand",
This husky prop man of our film land.

JAELENE WOODRUFF

Commercial

Theatre Guild 1, 2, 3; Girls' Glee Club 1; Commercial Club 3; Declamatory 1; Swim Club 3; Life Guard 2, 3.

She coaches the stars in her dramatic school,
Having learned each trick and every rule.

*Mavis
A night*

MAVIS WRIGHT

Commercial

Commercial Club 2, 3.

Mavis, Mavis, quite contrary.
In Hollywood, surely, your hatchet you'll bury.

VELMA YEAGER

Commercial

Working in the office, she learns the business well.
She knows more about the movies than you can ever tell.

RALPH YOULL

Social Science

Student Council 3; Football 2, 3; Basketball 1, 3; Track 3;
Wrestling 2.

A newcomer to films, as he was to our school,
This dependable prop man is a valuable tool.

SENIOR CINEMA

MARY ANN ZIEGLER

Language

Student Council 1; Bumble "B" 1, 2, 3; Theatre Guild 3;
Girls' Glee Club 2; Artiteers 3; Swim Club 3; Pep Club 2.

Mary Ann Ziegler designs the gown
That the actress wears when she "goes to town."

MARCIA ZIMBECK

Commercial

Girls' Glee Club 1; Commercial Club 3; Camera Club 3;
Swim Club 3.

Marcia is modest and pretty, too.
We knew she'd star when we saw her pre-view.



SENIOR CLASS WILL

(Continued from page 15)

- Item: Jimmy Cook leaves the good times he's had as a senior for the last ten (?) years to Arthur Clarke, who undoubtedly will not have the opportunity to be ten years a senior.
- Item: To Bob Allender, Ronald Hinrichs leaves his unsuspicious nature and trust in everyone.
- Item: Five certain senior girls leave their ability to "skip" school and be caught in the act to any juniors who feel in the same mood.
- Item: Avis Dodge bequeaths her ability to "cram" for tests to Dorothy Erickson.
- Item: To Evaline ("Becky") Beckwith, who seems to be in need of it, Annalou Pendarvis leaves her demureness and quiet nature.
- Item: Irene Anderson leaves her ability to track down the truth to Mr. Evans (who really doesn't need any more than he has.)
- Item: Mary Lee Rosengreen leaves her friendliness to everyone and her ever-smiling countenance to Veloise Lippert.
- Item: Francis Statton wills his ability to assist Mr. Fisher in teaching chemistry to some poor junior who is foolish and industrious enough to tackle that subject next year.
- Item: To Kathleen Johnson and Don DeFrance, who seem to be progressing nicely without any help, Muriel Pearson and Marion Parks leave their devotion to each other.
- Item: Marian Allen gladly bequeaths her fear of talking in her sleep to Mary Elizabeth Lees.

CLASS OF '39

Witnesses:

U. R. EXPOSED
R. U. HUFFY

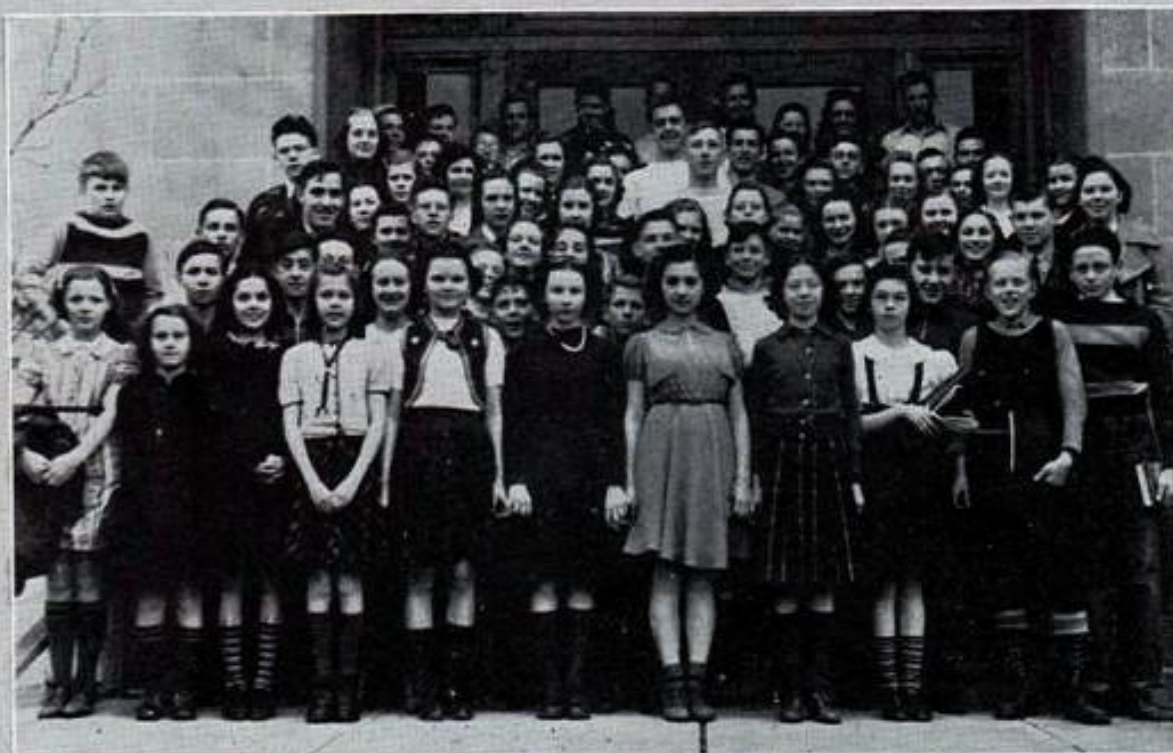
Lawyers:

I. M. SANE
I. M. EDUCATED

MANAGEMENT



FIRST SEMESTER STUDENT COUNCIL



SECOND SEMESTER STUDENT COUNCIL



Scrollette



Bumble "B"

BROADCASTING

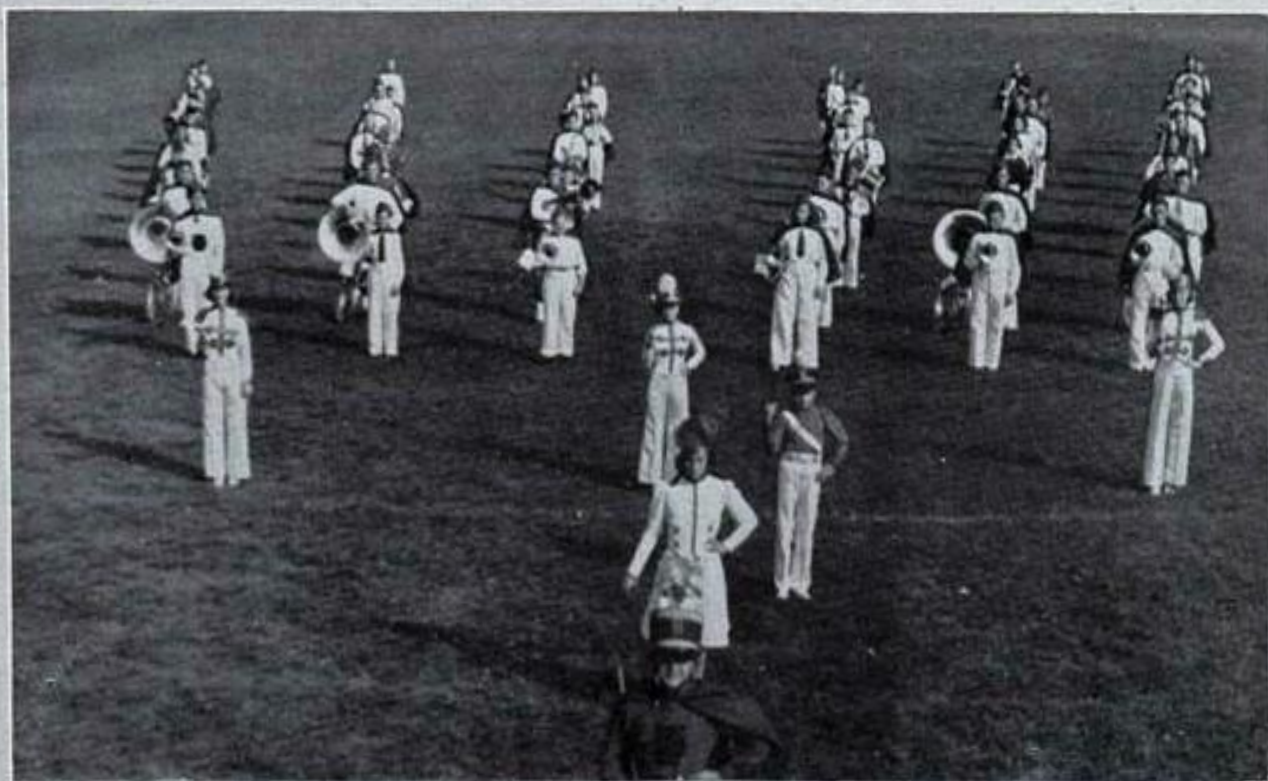


Declamatory



Debate

MUSICAL SHORTS



Band



Mixed Chorus

SOUND EFFECTS



Girls' Glee Club



Boys' Glee Club



The Tin Hero

Janet Hill



Orchestra

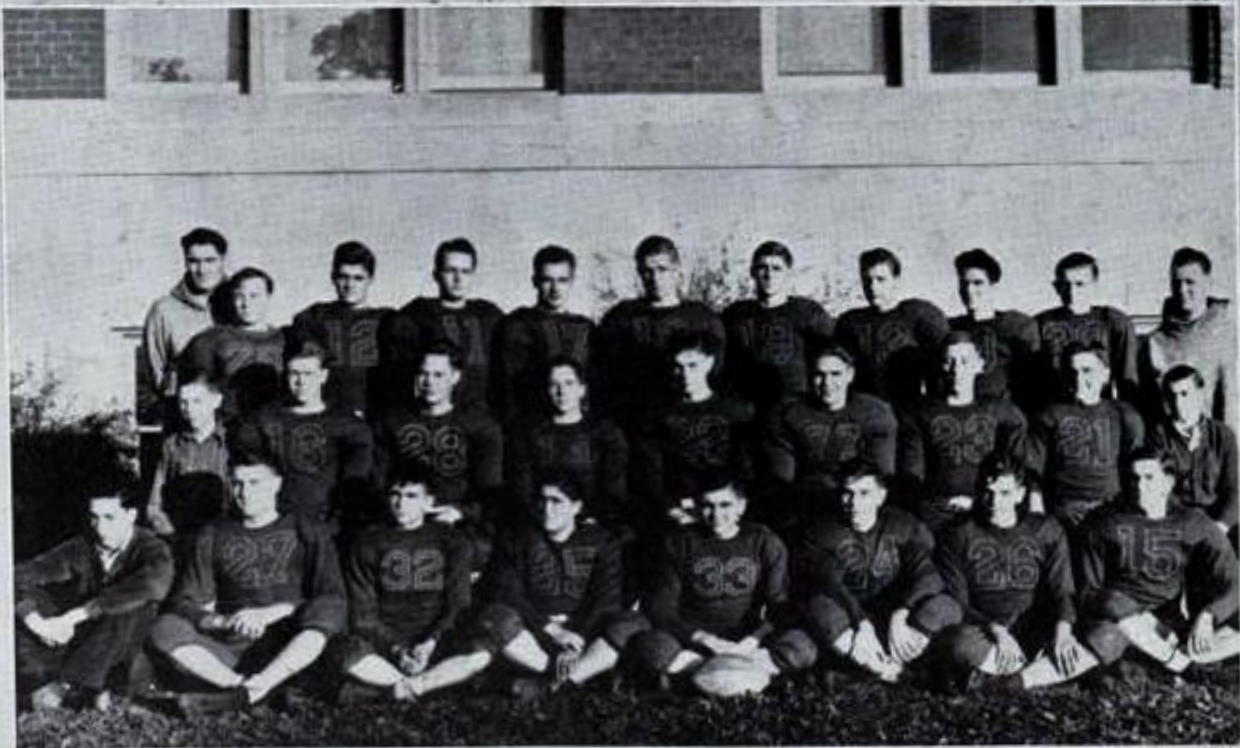
ACADEMY AWARDS



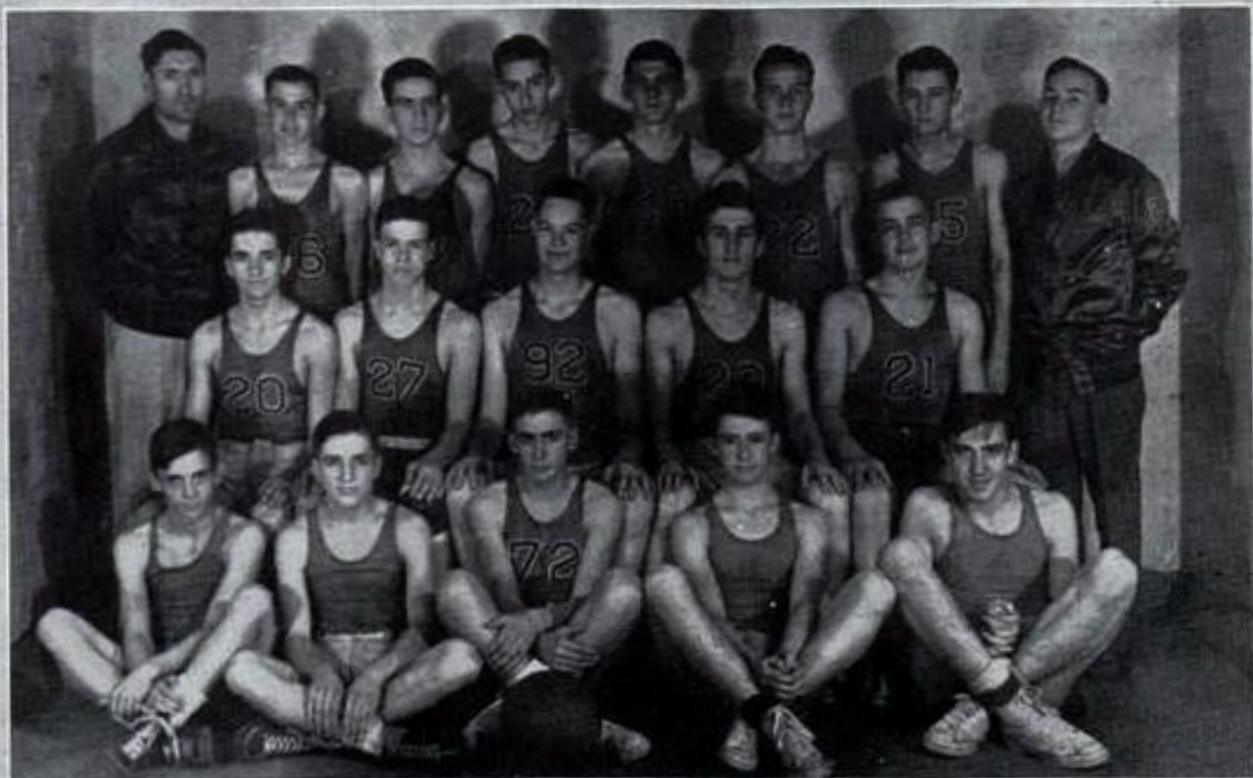
National Honor Society



Quill and Scroll



FOOTBALL



BASKET-BALL

BEHIND SCENES IN SENIOR HIGH

*Beverly Jean
& Betsy*



THE CLASS OF '39

I know that there will never be,
A class like "thirty-nine."
Their very motto seems to be,
"Boone High is mine, all mine."

The football games were free-for-alls,
Their basketball was, too.
But let me tell the story now,
Of what the class did do.

A member of the class was I,
And how could I forget,
How many pupils "just got by"?
And some are still there yet.

Our spirit did run high you know,
We were the wildest bunch
We had our fun in class and hall,
In spite of Evans' punch.

Class pictures were a headache sore,
They still don't look like us.
Our features were too large or small,
And did we raise a fuss!

Reception was a thing to see.
We were the "jitterbugs."
We'd "truck on down" and "shag on through."
Did we tear up the rugs!

The hottest thing in town right then
Was Boone High's old gym floor.
There's no reception 'fore or since,
With so much fun galore.

The sandbag fights did test our grit.
The crippled juniors flew
To right and left and up and down.
They knew not what to do.

Then came the speeches and the fuss,
The formal things to do.
That spring we knew the time had come.
Our fling was almost through.

Our caps and gowns we wore that day.
I hope I won't forget
The face of any classmate there.
I wish I was there yet.

So if you wish that you were through,
Just please recall to mind,
The best days of the life you live
Are of the high school kind.

The sad end of this tale I'll tell,
The tragic end we met.
The class of '39 is gone.
They were the best class yet.



. . . D. Johnson

JUNIOR COLLEGE 'PRE-VUES'



JUNIOR HIGH 'CANDID CAMERA'



Andy Ch. Shaffer
"40"

Dean Reid
"40"

Miriam Hansen
"40"

AUTOGRAPHS

Mildred Buechler
"40"

Mary Nappert
"40"

Helene Pasengreen
"40"

Daryl Anderson

Kathryn Fisher
"40"

Don Griffin
"40"

Willie L. Nappert
"40"

Frances Ann Paul
"40"

Wickell Enich

Barbara J. Stiles
"40"

Frank M. Goff
"40"

Buster L. Buechler
"41"

Thelma Richards
"41"

Dolores Smith
"42"

Robert L. Goff
"40"

Jonis Anderson
"40"

Waldo Paszeleen
"40"

Betty Anderson
"41"

Mae Johnson
40

Phyllis Darling
40

^{Broo}
AUTOGRAPHS

June Peterson

Betty Jean Lundquist
40

Helen Myers
40

P
e
e

Rose Shaffer
41

Marietta Carlstrand
41

Betty Lee Winfield
41

Kurt Krose

Ruth Krose
41

Clayton Kropf
41

Dorothy Meehan
40

Helen Jeanne
41

Sylvia Robertson

Louise Engstrom

Joe Eiserman
40

Zoe Wilson
40

Wilma Shadle
41

Mildred Boal
40

Richard MacDonald
40

Bill McArthur

Fred (Barrett) Verm Dripps

William Macchiter
41

William Kirk Butler