



---

1938 SCROLLETTE

---



---

# 1938 Scrollette

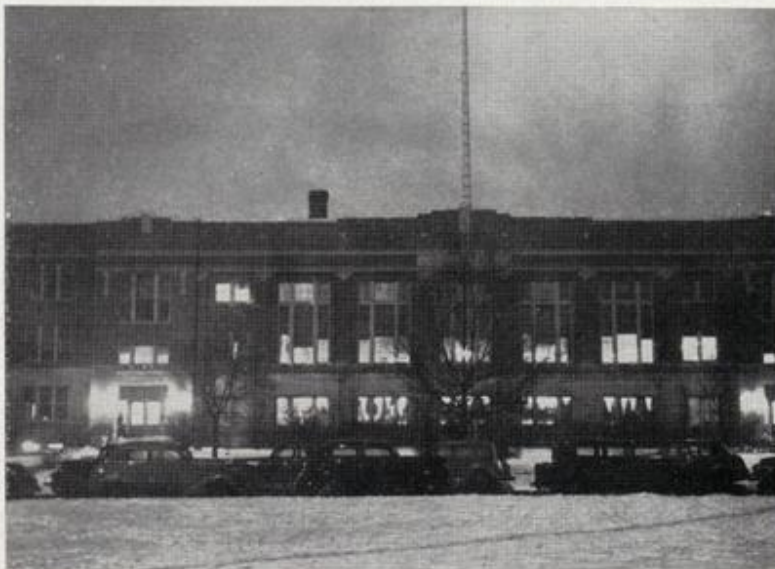
---

Published by  
**THE SENIOR CLASS**  
of the  
Boone High School  
Boone, Iowa



# F O R E W O R D

*I*n this 1938 SCROLLETTE, we have compared our school life to a four-ring circus. The high school building is the **BIG TOP** under which you students, as performers, are trained by your teachers, the **RINGMASTERS**. We have tried to give a complete picture of the activities in our circus so that in later years you may remember your many happy hours in the "main tent" of learning.







H. J. VAN NESS, Superintendent



LAURANCE EVANS, Principal

## DEDICATION

*To* these new officials who head our well disciplined troupers; who operate our circus efficiently; who with wisdom and friendly interest inspire every member of this big organization to do his best . . . we the 1938 Scrollette Staff affectionately dedicate this book.







# SENIOR HIGH FACULTY

HUBERT J. VAN NESS	Superintendent
LAURANCE EVANS	Principal
JOHN FISHER	Mathematics, Assistant Principal
EDITH ANDREW	Commercial, Social Science
WELKER BECHTEL	Mathematics, Chemistry
CAROLYN CARLSON	School Nurse
EVELYN CARLSON	Physical Training
HAROLD R. CUNNINGHAM	Physics, General Science
WILBUR DRAKE	Agriculture, Mathematics
N. A. FIELDS	Mechanical Drawing, Music
FRANCES GUSTAFSON	Mathematics
DAGMAR HANSEN	English, Journalism
STENA HANSEN	Social Science
WILLIAM HARTLEY	Commercial
ELOISE HARVEY	Girls Adviser, Social Science
EDNA HOWE	Commercial
ANNA JOHNSON	Domestic Science
SYBIL LAMB	English
JENNIE LEE	Art
LOUISE LINDERBLOOD	Latin
KARL P. LONGNECKER	Biology, Zoology
FAY McINTYRE	Science
C. T. MAU	Science, Athletics
GRACE MURRAY	Mathematics
VADA PODENDORF	Algebra, Commercial
LYLE QUINN	Social Science, Vocations
CLEO ROBERTS	Athletics, Physical Training
FLOYD ROBINSON	Manual Training
F. ANNETTE SCHULDT	German, English
DORIS SHALER	French, English
HELEN SIEVERS	Music
ZOE STEVENS	English, Library
J. R. THORNGREN	Social Science, J. C. Dean
LOLA WEBER	Commercial
ETHEL WHITNEY	Social Science

## SCHOOL BOARD

HENRY L. WALLACE, President	L. R. JOHNSON, Secretary
RUSSELL TESDAHL	FRED NELSON
HARLEY EDGERTON	ARTHUR EDDY

PHILLIPS

[illegible]

Flower: Rosebud

Motto: "In ourselves our future lies".

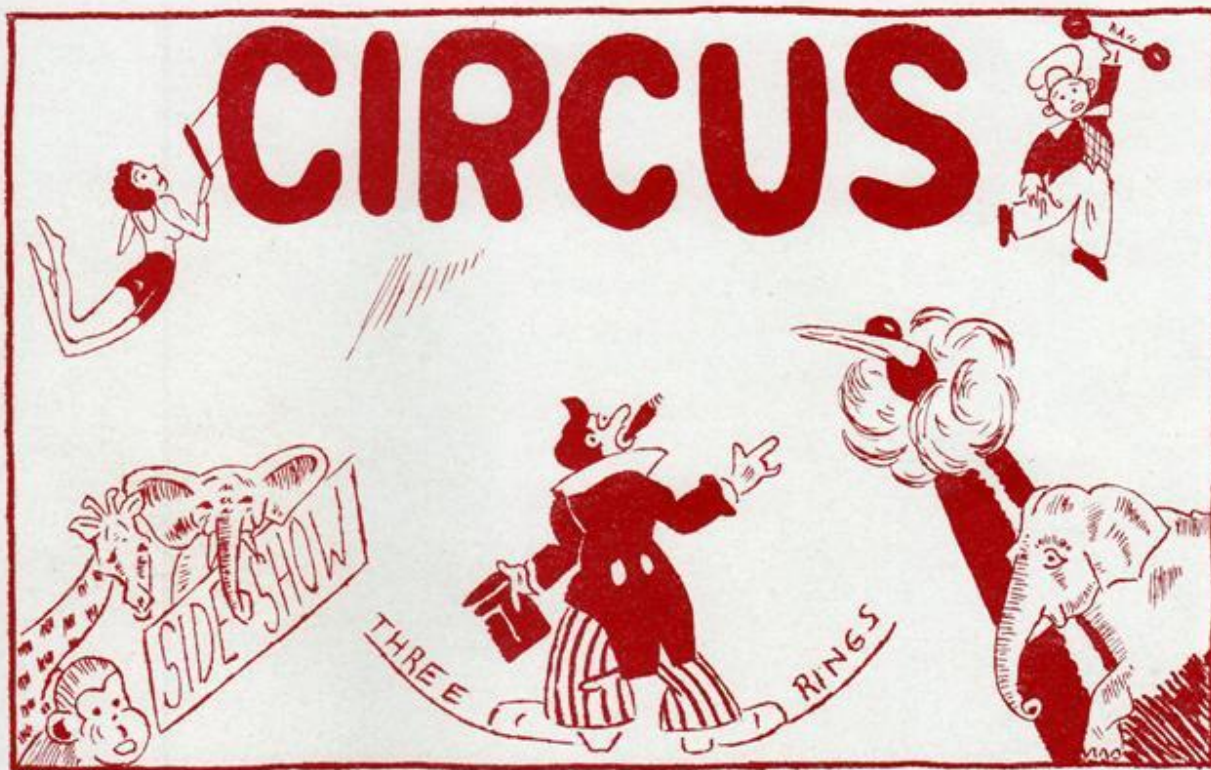
Farewell dear school called B. H. S.  
We leave you now for untried fields.  
The wisdom you have given to us  
We'll wear as strong, protecting, shields.

We've tried right hard to do our work  
That when we left, you would be proud  
To know that we could be within  
The center of a learned crowd.

We've had great fun as well as toil  
With entertainments of all kinds:  
Shows, parties, picnics, kid-day too—  
For recreation broadens minds.

But now our days with you are past,  
And leave we must with deep regret.  
You've brought us through with loving care,  
And made us friends we'll ne'er forget.

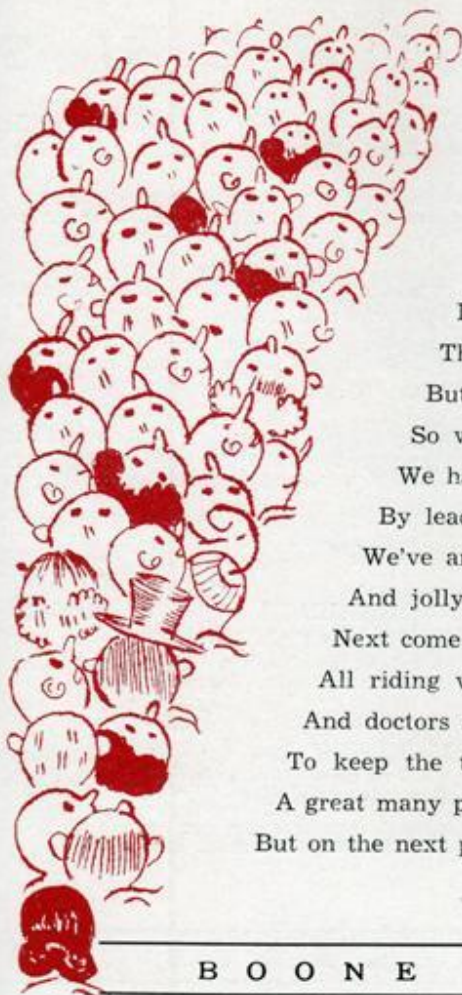




LEAVERTON

## Senior Circus

A parade that should last you for many a day  
 Is this one we are bringing directly your way.  
 It is made up of circus stars, seniors to you,  
 And the things they have done or the things they will do.  
 It is meant to bring memories in forthcoming years  
 That might cause a deep chuckle, or hot stinging tears.  
 But more of the circus—we've plenty to tell  
 So why on sad thoughts must one constantly dwell?  
 We have a brass band that starts things in style  
 By leading our circus troupe mile upon mile.  
 We've animal trainers, from elephants to fleas,  
 And jolly young clowns, with big, baggy knees.  
 Next come the young ladies all dressed in their best,  
 All riding white horses that make no protest.  
 And doctors and nurses are always along  
 To keep the troupe members both healthy and strong.  
 A great many players are not mentioned now  
 But on the next pages you'll see them, I vow.



B O O N E   H I G H   S C H O O L





## S E N I O R C I R C U S

### MAXINE AHRENS

#### Commercial

Debate 1; Girls' Glee Club 1, 2, 3; Life Guard 1, 2, 3; "Hollywood Bound".

Friendly, good natured, and jolly, in truth,  
Is this dark-haired girl in the ticket booth.

### TOM BENSON

#### Scientific

Scrollette 3; Boys' Glee Club 3; Mixed Chorus 3; Hi-Y 2, 3.

Although he may be many miles from his act,  
His airplane will bring him in time and intact.

### DOROTHY ANDERSON

#### Commercial

Debate 1; Commercial Club 2, 3; Pep Club 3.

Winning friends, her major aim;  
Charming snakes, her way to fame.

### DARREL BERG

#### Social Science

Boys' Glee Club 1; Social Science Club 3.

To play a trick on a fellow actor  
In Darrel's life is an important factor.

### DWIGHT ANDERSON

#### Social Science

Theatre Guild 3; Social Science Club 3; Football 3.

Afraid of the pearly gates? Oh no!  
He says to his tiger, "On with the show!"

### JOHN BERG

#### Scientific

Student Council 3; Scrollette 3; Theatre Guild 3; Boys' Glee Club 1, 3; Football Manager 1; Golf 2, 3; Hi-Y 2, 3.

Step over here, folks, and see our Tom Thumb,  
He may be small, but he isn't dumb.

### EUDORA ARNOLD

#### Scientific

Student Council 1, 2; Theatre Guild 1, 2, 3; Social Science Club 3; Phi Chi A 3; Pep Club 2, 3.

Unless she trains lions, she says she'll lament,  
But we think as a nurse she'd best be content.

### WARREN BERGENDAHL

#### Agriculture

Hi-Y 1.

For special lighting effects we will call  
On our circus electrician, Bergendahl.

### FRANCIS BARRETT

#### Commercial

Student Council 1, 3; Social Science Club 3.

He thinks he's the best of the good little boys,  
But we know he's a clown who makes plenty of noise.

### FLORENCE BIRNEY

#### Language

Bumble "E" 3; Girls' Science Club 3; Arts & Craft Club 3; F 22 3; Pep Club 2.

As granting favors is quite our way,  
The circus will stop in Detroit some day.



**ROWENA BOYD**

Commercial

Many scrapbooks she will fill  
With clippings about our Circusville.

**VELMA BOYD**

Commercial

Student Council 1; Commercial Club 3.

She'll set your fancies all a'whirl  
With her accordion and her pretty curl.

**MARCENE BRAKLOW**

Commercial

Girls' Glee Club 1; Commercial Club 3.

A helpful hobby our Marcene chose,  
On costumes for the cast she sews.

**ENID BREEDLOVE**

Commercial

Student Council 2, 3, Secretary 3; Girls' Glee Club  
1, 2, 3; Mixed Chorus 1, 2, 3; Orchestra 1, 2, 3;  
Pep Club 3; "Hollywood Bound".

Ne'er a fairer lady in all the land  
Than this charming queen of the circus band.

**PAUL BROGDEN**

Commercial

Commercial Club 2; Pep Club 2; Hi-Y 2; Basketball  
2, 3; Tennis 1; Swimming 1.

Unsung in circusland? Not he!  
For trained fleas are a rarity.

**FRANK BROWN**

Commercial

"Hotdogs for a nickel" is the cry sent through  
the air,  
As Junior from the nearby stand calls out with-  
out care.

**MAURICE BROWN**

Language

He'll balance the budget and make it agree;  
At juggling figures, a wizard is he.

**RUTH BRUNTON**

Commercial

Commercial Club 3.

On the business staff of this traveling band,  
Our bright-eyed stenographer lends a hand.

**LAVAUN BRUNS** Social Science, Scientific

Girls' Glee Club 3; Social Science Club 3; Phi  
Chi A 3.

She's now a jolly member of our traveling show,  
But soon to scientific work her thoughts will go.

**JANE BUECHLER**

Commercial

Debate 1; Girls' Glee Club 1, 2, 3; Commercial Club  
2, 3, Treasurer 3; Declamatory 1, 2, 3; Pep Club 2, 3;  
"Hollywood Bound".

She abhorred keeping house, and so she became  
A rider atop an elephant tame.

**MARJORIE BUECHLER**

Commercial

Commercial Club 3; Pep Club 3.

In this enterprise are great business demands,  
A good stenographical job she commands.

**CHARLOTTE BURGESS**

Commercial

Student Council 3; Scrollette 3; Theatre Guild 2, 3,  
Historian 3; Girls' Glee Club 1, 2; Mixed Chorus 3;  
Orchestra 1, 2, 3; Commercial Club 2, 3, Secretary 3;  
Life Guard 2, 3; Pep Club 1, 2, 3; Swimming Exhi-  
bition 2; "Hollywood Bound".

An ice-skating rink she needs for her act,  
And her exhibition with thrills is packed.

**MARIE BURTON**

Commercial

The "boss" on her thoughtful work does rely,  
She's his competent "stenog"—that is why.

**MARJORY CARLSON**

Commercial

Student Council 2; Scrollette 3; Bumble "B" 1, 2, 3,  
Editor 3; Quill & Scroll 3; Girls' Glee Club 1, 2, 3;  
Commercial Club 2, 3, Vice-President 3; Debate, 1;  
Pep Club 1, 2, 3; Librarian 2; Life Guard 2, 3;  
Swimming Exhibition 2; "Hollywood Bound".

A shy little girl in the "Big Top Town"  
Typing script for the merry clown.

**LYLE CARPENTER**

Commercial

He displays kindness as well as tact,  
As he brings his dogs for the final act.

**DELIA CASE**

Commercial

Pep Club 3.

Before the circus the ladies did stop,  
At Delia Case's beauty shop.

**BILL CHANCE**

Scientific

Theatre Guild 3; Band 1, 2, 3; Social Science Club 3,  
Treasurer 3; Football 2, 3; Swimming 3.

To the circus he came on a fine spring day  
Bringing his girl in his Model "A".

**JACK CLABAUGH**

Commercial

In school the love of argument was one of Joy's  
main factors,  
And now he quite exasperates both manager and  
actors.





## S E N I O R C I R C U S

**BERNIECE CONDON**

Commercial

Artiteers 3; Pep Club 2, 3.

By the doctor's side she works with persistence,  
A quiet little nurse lending faithful assistance.

**ARTHUR CROUTHAMEL**

Commercial

Band 1, 2, 3; Basketball 1, 2, 3.

His whistle blows, the crowd obeys,  
He's patrolman on this day of days.

**EUGENE CRANDELL**

Scientific

Scrollette 2, 3; Boys' Science Club 3; F 22 3; Football Manager 2, 3.

Posed as an ardent circus fan,  
Is Crandell, candid camera man.

**LESLIE CROUTHAMEL**

Commercial

F 22 3; Hi-Y 2, 3.

Merry and ready at your call,  
Is this dark-eyed human cannon ball.

**MARIE CRISP**

Scientific

Social Science Club 3; Phi Chi A 3.

Her hobby of reading she gladly employs,  
In proof-reading scripts for the girls and the boys.

**FRANCIS CUNNINGHAM**

Commercial

Hi-Y 1.

On clever signs he has pictured well  
A glimpse of the side shows' personnel.

**GROVER CROUSE**

Scientific

Social Science Club 3.

With our talented protege coming along,  
Astaire has a rival, unless we are wrong.

**ROBERT CURTIS**

Scientific

Theatre Guild 2, 3; Boys' Science Club 3; Camera Club 3; Pep Club 2.

After conducting the big side show,  
To his chemistry "lab" he is sure to go.

**HELEN CROUSE**

Scientific

Girls' Glee Club 1, 2; Orchestra 1, 2, 3; Social Science Club 3; Phi Chi A 3; Pep Club 2, 3; "Hollywood Bound".

To keep the troupe in good condition,  
She studied to be a dietitian.

**VIRGINIA DALE**

Social Science

Theatre Guild 2, 3; Social Science Club 2, 3; Life Guard 1, 2, 3; Pep Club 2, 3.

She has liking for sports and a way sure to please  
Plus her charming accomplishments on the trapeze.



**DEWAYNE DAVIS****Scientific**

Breathlessly watching, his art we admire,  
For this handsome fellow's an eater of fire.

**ANGIE DICKESON****Social Science**

Theatre Guild 3; Social Science Club 3, Treasurer 3;  
Arts & Craft Club 3; Declamatory 2; "Gas".

When the principal part of the circus is o'er,  
This stunt-flying aviatrix thrills you still more.

**VIOLA DORAN****Scientific**

Theatre Guild 2, 3; Girls' Glee Club 1, 2, 3; Phi  
Chi A 3; "Hollywood Bound".

Lest circus memories fade in coming years,  
Visit her booth and buy some souvenirs.

**FRANCES DOUROMES****Commercial**

Student Council 3; Girls' Glee Club 1, 2, 3; Com-  
mercial Club 2, 3; F 22 3; Arts & Craft Club 3;  
Artiteers 3; Pep Club 2, 3; "Hollywood Bound".

From under her artist's fingers flows  
The design for circus performers' clothes.

**GEORGE DUTTON****Commercial**

Student Council 2; Basketball 1, 2, 3; Football 3.

Little boys' hearts a pattering go  
When they see this cowboy in the Wild West Show.

**ARLENE EATON****Commercial**

Debate 1; Theatre Guild 2, 3; Commercial Club 2, 3;  
Pep Club 2, 3.

On a mirror of shining ice she whirls  
Before a chorus of skating girls.

**SARAH EMERSON****Commercial**

F 22 3.

A dark-haired girl with serious mien,  
She helps prepare the circus scene.

**DORIS FERGUSON****Commercial**

Student Council 1, 2; Commercial Club 2, 3.

Around the ring is this young lady's course—  
Doris and her performing horse.

**JEAN GEBERT****Social Science**

Bumble "B" 3; Arts & Craft Club 3; Pep Club 2.

Here many curious plants are seen,  
Exhibited by our botanist, Jean.

**JEANETTE GILLIAM****Scientific**

A little miss walking a rope so tight,  
Her dimples deep the throng delight.

**ROBERT GIVENS****Arts and Crafts**

Depenable in every way,  
Before him rolls of tickets lay.

**ELAINE GRILL****Commercial**

Girls' Glee Club 1, 2; Mixed Chorus 1, 2, 3; Orches-  
tra 1, 2, 3; Pep Club 3; "Hollywood Bound".

Seeing the circus while life is a song,  
Having a gay time all the day long.

**LOIS HAGELEEN****Scientific**

Girls' Glee Club 1, 2;; Orchestra 3; Social Science  
Club 3; Phi Chi A 3, President 3; Declamatory 2, 3;  
Life Guard 3.

With this leader in work and fun—and her smile,  
Our travels grow pleasanter mile by mile.

**MARJORIE HALL****Commercial**

Girls' Glee Club 1, 2, 3; Band 1, 2, 3; Orchestra 3;  
Commercial Club 2; F 22 3; "Hollywood Bound".

Not an acrobat's daughter was she,  
But an acrobat we'll all agree.

**MAX HALL****Scientific**

Class President 1; Student Council 1, 2; Golf 1, 2, 3;  
Swimming 2; Football 3; Hi-Y 2.

This brilliant member of our circus band,  
Is off playing golf, we understand.

**DARLENE HANSON****Commercial**

Girls' Glee Club 2, 3; Commercial Club 3; "Holly-  
wood Bound".

One who labors hard and long,  
Just to sing our circus song.

**DARRELL HANSON****Scientific**

Boys' Glee Club 1, 2; Band 1, 2.

What could that sweep of applause be for  
But Darrell's dance and his grace galore?

**PAUL HARVEY****Scientific**

Student Council 1; Social Science Club 3; Swimming  
3; Life Guard 2, 3.

A master sportsman demonstrates  
Accomplishments on his skills and skates.





## S E N I O R C I R C U S

**ARLENE HIATT**                      Commercial  
Student Council 1, 2; Theatre Guild 1, 2, 3; Girls' Glee Club 1; Commercial Club 1, 2; Life Guard 1, 2; Swimming Squad 1, 2, 3; "Let Who Will Be Clever"; "Gas".

For special engagement, from Hollywood came  
This brown-eyed actress of movieland fame.

**MYRON HILLMER**                      Social Science  
Social Science Club 2, 3; President 3; Class Basketball 1, 2, 3; Pep Club 3; Hi-Y 1, 2.

Always prepared to refute your word  
Is our circus' swallower of the sword.

**AGNES HODGSON**                      Language  
Student Council 2; Debate 1; Theatre Guild 2, 3; Commercial Club 2, 3; Social Science Club 3; Phi Chi A 3; Life Guard 1, 2, 3; Pep Club 2, 3; "Thomas Cook Ltd".

We find amidst the noise and whirl  
These flashing eyes—this jolly girl.

**EMMA HOLMES**                      Language  
Bumble "B" 1, 2, 3; Editor 3; Quill & Scroll 2, 3; Girls' Glee Club 1, 2, 3; Social Science Club 3; Pep Club 2; "Hollywood Bound".

This star reporter fulfills her commission  
Reviewing our show in the first edition.

**VERYL JENNINGS**                      Scientific  
Theatre Guild 2, 3; Social Science Club 3; Hi-Y 2, 3.

A studious mind and helping hand  
Make him producer of this band.

**DOROTHEA JIPP**                      Scientific  
Student Council 1, 3; Theatre Guild 1, 2, 3; Girls' Glee Club 1, 2, 3; Mixed Chorus 1, 2, 3; Phi Chi A 3; Declamatory 2, 3; "Treasure Island"; "Hollywood Bound".

"The leading lady" her occupation,  
And "lots of fun" her recreation.

**ELLEN JEAN JOHNSON**                      Commercial  
Debate 1; Girls' Glee Club 1; Life Guard 2, 3; Pep Club 2, 3.

The dancing chorus brings fun and pep,  
And Ellen is leading with graceful step.

**KENNETH JONES**                      Social Science  
Boys' Glee Club 2, 3; Mixed Chorus 2, 3; Social Science 3; Hi-Y 1, 2; Basketball Manager 1, 2, 3; Tennis 1; "Hollywood Bound".

A manager with ability and tact  
Is just as essential as an act.

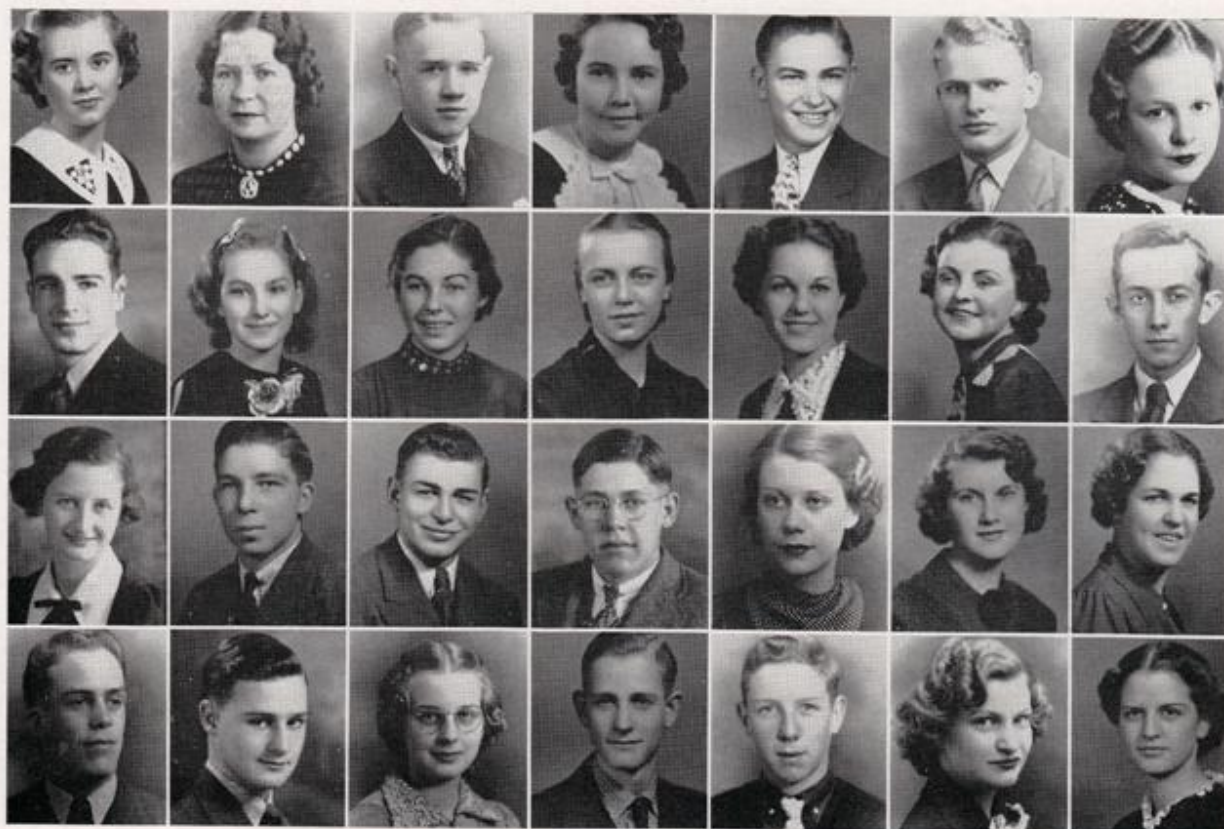
**HARRY JORGENSEN**                      Scientific  
Student Council 1, 2; Bumble "B" 2, 3; Theatre Guild 1, 2, 3; Vice-President 2; President 3; Boys' Glee Club 1, 2, 3; Librarian 3; Mixed Chorus 1, 2, 3; Band 1, 2; Orchestra 1, 2; Social Science Club 3; Boys' Science Club 3; F 22 3; Football 1, 2, 3; Basketball 1, 2; Track 1, 2, 3; Swimming Squad 2, 3; Swimming Exhibition 2; "Pigs"; "Gas"; "Hollywood Bound"; "Thomas Cook Ltd".

Jorgenson is the "ladies man"  
With a trapeze thriller for every fan.



- JAMES KADING** Scientific  
Social Science Club 3; Football 2, 3; Track 1, 2, 3;  
Beasts and birds of queer description  
He brought from his latest expedition.
- WENDELL KALEN** Scientific  
He's seen strange worlds and oceans deep,  
And trains the seals to earn his keep.
- BETTY KNUDSON** Scientific  
Girls' Glee Club 1; Orchestra 1, 2, 3; Girls' Science Club 3, Secretary 3.  
Happy and jolly, a musician too,  
And never will you find a pal so true.
- JANE LAMPHERE** Commercial  
Pep Club 2, 3.  
A friendly girl with dimpled cheeks,  
Our circus stars' autographs she seeks.
- CLAYTON LANDER** Scientific  
Student Council 1, 2, 3; Boys' Glee Club 1, 2, 3; Mixed Chorus 2, 3; Band 1, 2, 3; Orchestra 1, 2, 3; Boys' Science Club 1, 3; F 22 3; Hi-Y 1, 2, 3; "Hollywood Bound".  
With uniform stunning and low bow grand,  
He steps up to lead the big brass band.
- MAE IONE LANTZ** Commercial  
Debate 2; Girls' Glee Club 2; Pep Club 3.  
Patiently doing her daily chore,  
She takes our tickets at the door.
- LEO LARREW** Agriculture  
A quiet man, you'll all agree,  
He is our man of mystery.
- VERA LAVER** Commercial  
To a ringside seat she's sure to go  
This ardent spectator of our show.
- EILEEN LEAVERTON** Language  
Theatre Guild 1, 2, 3; Social Science Club, 2, 3; Librarian 1, 2, 3; Pep Club 2; Swimming Squad 1, 2, 3; Life Guard 1, 2.  
The public with our circus she wishes to acquaint  
So, big posters of our acts she'll sketch and paint.
- WILLIAM LEES** Commercial  
Intramural Basketball 3; Hi-Y 2, 3.  
Tall and quiet, he likes to read;  
He's the thin man who will in work succeed.
- BETTY LIKELY** Scientific, Social Science  
Student Council 1, 3; Scrollette 3; Bumble "B" 1; Accompanist for Boys' Glee Club 1, 2; Phi Chi A 3, Vice-president 3; "Hollywood Bound".  
A piano playing genius with such a friendly way,  
That all the circus members her slightest wish obey.
- JOHN LINDELL** Scientific  
Bumble "B" 1; Social Science Club 3, Vice-president 3; Boys' Science Club 3; F 22 3; Hi-Y 2, 3.  
A photographer on the publicity staff,  
His "shots" cause many a cheer and laugh.
- FRANK LINDERBLOOD** Scientific  
Student Council 1, 3; Bumble "B" 2, 3; Debate 1, 2, 3; Social Science Club 3; Golf 2, 3; Class Basketball 1, 2, 3; Pep Club 2; Hi-Y 2, 3, Treasurer 3.  
Hear him calling along the aisle,  
"Coca Cola for your honey chile".
- MELVERNA E. LIPPERT** Commercial  
Debate 1; Theatre Guild 2, 3; Girls' Glee Club 1, 2, 3; "Hollywood Bound".  
A girl from our make-up department is she,  
Who makes the performers attractive to see.
- GENEVIEVE LONG** Commercial  
Pep Club 1.  
Her skating acts bring quite a thrill,  
Especially when she has a spill.
- BERNICE McVICKER** Commercial  
Student Council 3; Debate 1; Girls' Glee Club 1, 2, 3; Mixed Chorus 1, 2, 3; Commercial Club 3; Pep Club 2; "Hollywood Bound".  
So lightly, daintily, on her toes,  
This graceful little dancer goes.
- GERTRUDE MAY** Commercial  
A bright young lady who spends her time  
In selling a ticket to you for a dime.
- LEONARD MEIS** Scientific  
Boys' Glee Club 1, 2; Mixed Chorus 2; Band 1; Social Science Club 3; Football Manager 2; Swimming 3; "Hollywood Bound".  
A lion tamer with a lot of good sense,  
He keeps his audience silent and tense.
- BERDENA MENTZER** Commercial  
Girls' Glee Club 1; Commercial Club 3; Pep Club 3.  
Laughing eyes and brown hair curled,  
All around her knives are hurled.





## S E N I O R C I R C U S

### JEAN MEYERS

#### Social Science

Bumble "B" 1, 2, 3; Theatre Guild 2, 3; Social Science Club 2, 3; Treasurer 3; Life Guard 1, 2; Pep Club 2, 3.

As nurse her duties are quite clear,  
And she is one to persevere.

### EVA MICKLE

#### Commercial

Girls' Glee Club 3.

She writes advertisements as a bait,  
To make you come and celebrate.

### MORRIS C. MONTGOMERY

#### Social Science

He puts up the tents, and pounds in the stakes,  
An important part in our circus he takes.

### FLORENCE MOORE

#### Commercial

Student Council 2, 3; Girls' Glee Club 3; Commercial Club 2, 3; Pep Club 2, 3.

A tiny stenographer, smart as a whip,  
O'er the keys race her fingers at a fast clip.

### JOHN MUNSON

#### Scientific

Student Council 1, 2; Theatre Guild 3; Band 1, 2, 3; Social Science Club 3; Pep Club 1; Hi-Y 2, 3.

Fond of girls and exceedingly merry,  
He joined the circus as a veterinary.

### DONALD MYERS

#### Agriculture

Boys' Glee Club 1; Wrestling 1, 2; Football 1; Intramural Basketball 1, 2, 3; Kittenball 1, 2.

To pilot an airplane upside down  
Brings to this aviator great renown.

### RUTH MYERS

#### Scientific

Bumble "B" 2, 3; Theatre Guild 3; Girls' Glee Club 1, 2, 3; Phi Chi A 3; Pep Club 2, 3; "Hollywood Bound".

A likable girl with a future in sight,  
Her parachute jumps create great delight.

### CLARK NELSON

#### Scientific

Student Council 3, President 3; Bumble "B" 1, 2; Theatre Guild 2; Boys' Glee Club 1, 2; Mixed Chorus 1, 2; Hi-Y 1, 2, 3; "Differential Kindness"; "Hollywood Bound".

Join the circus for your wealth,  
See Dr. Nelson for your health.

### LORENA NORTH

#### Commercial

Debate 1, 2; Theatre Guild 2, 3; Girls' Glee Club 1, 2, 3; Mixed Chorus 2, 3; Commercial Club 1, 2, 3; Pep Club 2; "New Fires".

A dazzling blonde with a winning smile,  
She sits on the elephant's trunk awhile.



**RUTH NYGREN**

Language

Student Council 2; Girls' Glee Club 1, 2, 3; Band 1, 2, 3; Phi Chi A 3; "Hollywood Bound".

A happy little nurse with an eye for fun,  
She's on the job when there's work to be done.

**LAVONNE NYSTROM**

Commercial

Girls' Glee Club 1, 2; Commercial Club 2; Life Guard 1, 2; "Hollywood Bound".

Endowed with plenty of the gift called guile,  
She pirouettes her way toward fame the while.

**JOYCE OLSON**

Scientific

Student Council 1, 2; Theatre Guild 2, 3; Life Guard 1, 2, 3; Pep Club 2, 3.

A fun-loving girl with a crown of dark-hair,  
She teaches some tricks to a little brown bear.

**HELYNN PALMER**

Commercial

Scrollette 3; Bumble "B" 1, 2; Quill & Scroll 2, 3; Girls' Glee Club 2, 3; Commercial Club 3; Social Science Club 2, 3; Secretary 3; Pep Club 2, 3; "Hollywood Bound".

It is easy for her from books to learn,  
Yet singing is her chief concern.

**ROBERT PAULSON**

Scientific

Student Council 3; Band 1, 2, 3; Orchestra 1, 2, 3; Social Science Club 3; Football Manager 1, 2; Hi-Y 3.

Filled with life and a desire for fun,  
He sends his airplane toward the sun.

**JANE PESTOTNIK**

Scientific

Class Officer 2; Student Council 1; Bumble "B" 1, 2; Girls' Glee Club 1, 2; Band 1, 2, 3; Orchestra 1, 2, 3; Girls' Science Club 3; F 22 3.

All you music makers heed;  
Here is a trombonist indeed!

**GERALD PETERS**

Commercial

Student Council 1; Theatre Guild 3; Football 2, 3; Basketball 1, 2, 3.

He keeps law and order in the big top,  
This broad-shouldered, fearless circus cop.

**MARSHALL PHILLIPS**

Social Science

Class Officer 3; Student Council 3; Scrollette 3; Theatre Guild 3; Social Science Club 3; Boys' Science Club 3; F 22 3; Football 1, 2, 3, Captain 3; Track 1, 2, 3; Basketball 1.

Our football captain, brave and strong,  
Is boss of Boone High's circus throng.

**DEWAYNE PHIPPS**

Agriculture

Speed and endurance from a car he can lure,  
And so he was made the big boss's chauffeur.

**WILMA POTTS**

Commercial

Tall and slender, she helps with the show,  
As in intricate circles her roller-skates go.

**JEANNE PRATT**

Commercial

Student Council 2; Debate 1; Theatre Guild 2, 3; Commercial Club 2, 3; Social Science Club 2, 3; Pep Club 2, 3; Cheer Leader 2, 3.

Always eager to do her best  
Is Jean, our darling aerialist.

**FRANCES REID**

Commercial

We find this young lady on the ice-skating rink,  
With performance so thrilling it makes your eyes blink.

**JIMMIE REYNOLDSON**

Commercial

Class President 3; Student Council 1, 2, 3; Theatre Guild 2, 3; Social Science Club 1, 2, 3; Football 1, 2; Pep Club 2, 3.

Impervious to fire and fame  
He thinks that life is just a game.

**CLARENCE RICE**

Scientific

Student Council 1, 2, Secretary 2; Scrollette 2, 3, Editor 3; Bumble "B" 1; Quill & Scroll 3; Theatre Guild 1, 2; Boys' Glee Club 1; Mixed Chorus 1; Band 1, 2; Orchestra 1, 2; Social Science Club 3; Boys' Science Club 3, President 3; Swimming 2; Hi-Y 2, 3, Secretary 2, President 3; Clarinet Quartet 1; "New Fires".

Industrious to the 'nth degree,  
He earns a big, fat lawyer's fee.

**LETHA RICHARDS**

Commercial

Scrollette 3; Girls' Glee Club 1, 2, 3; Commercial Club 2, 3; Arts & Craft Club 3; Pep Club 2; "Hollywood Bound".

For first aid our members and patrons go  
To this nurse who's on duty at every show.

**JAMES RIDDLE**

Social Science

Intramural Basketball

He skims o'er the ice with exceeding grace,  
This slender boy with a handsome face.

**LAWRENCE RIDGWAY**

Scientific

Social Science Club 3; Hi-Y 1, 2, 3.

"Peanuts, popcorn, lemonade!"  
Soon his fortune will be made.

**CAROL ROBERTS**

Commercial

Debate 1; Commercial Club 3.

She watches our show but continues to chatter,  
Amid roaring of lions and horses hooves' clatter.

**MARJORIE ROBERTSON**

Arts and Crafts

Theatre Guild 3; Social Science Club 2, 3; Arts & Craft Club 3; Pep Club 2, 3; Life Guard 1, 2, 3.

Pretty, stylish, slender, tall,  
She's a girl who knows them all.





## S E N I O R      C I R C U S

### LILLIAN ROSE

Commercial

Debate 1; Girls' Glee Club 1; Commercial Club 3; Pep Club 2, 3.

Souvenirs are what she sells,  
"Come buy balloons and canes!" she yells.

### WALTER SELLERS

Social Science

Boys' Glee Club 1; Football Manager 2; Intramural Sport Manager 3; Intramural Sports 1, 2, 3; Kittenball 1, 2.

It's Walter's first circus; he grins and grins,  
And wonders when the show begins.

### PHIL RUSCHMEYER

Scientific

Student Council 1, 2, 3; Boys' Glee Club 3; Social Science Club 3; Intramural Basketball; Swimming; Pep Club 2; Hi-Y 2, 3.

The hand is quicker than the eye,  
Watch this magician catch a fly.

### MARIE SEYMOUR

Scientific

Scrollette 3; Social Science Club 3; Phi Chi A 3; Extemporaneous Speaking 2.

Of unkind words she speaks not one,  
This nurse whose work can ne'er be done.

### DOROTHY SCHROEDER

Scientific

Girls' Glee Club 1, 2; Social Science Club 3; Phi Chi A 3; Life Guard 1, 2; Pep Club 2, 3.

With steady hand and eyesight keen,  
She hurls her knives in trim routine.

### JOHN SHADLE

Scientific

Class President 2; Student Council 1; Theatre Guild 1, 2, 3; Band 1, 2, 3; Orchestra 1, 2, 3; Social Science Club 3; Cheer Leader 2, 3; Pep Club 2, 3; Hi-Y 2, 3, Secretary 2; "Pigs".

A tamer of lions and girls is he,  
With loads of personality.

### MARCUS SCHROEDER

Commercial

Student Council 1, 3; Basketball 1, 2, 3; Football 1, 2, 3.

Mark, our trainer strong of limb,  
Keeps our acrobats in trim.

### ROBERT SHAW

Commercial

He knows your future, present, and past,  
Where does he gain knowledge quite so vast?

### JEANNETTE SELLERS

Commercial

Pep Club 3.

Writer of letters, reader of books,  
She also changes our circus stars' looks.

### FRANCES SMITH

Commercial

Orchestra 1, 2, 3; Commercial Club 2, 3; Pep Club 2, 3.

A quiet girl with gentle ways,  
She comes to circus matinees.



**PAULINE SMITH****Social Science**

Social Science Club 3; Girls' Glee Club 3.

She joined the circus just this year,  
And looks forward to a big career.

**ROBERT SMITH****Scientific**

Boys' Glee Club 2, 3; Mixed Chorus 2, 3; Band 1,  
2, 3; Orchestra, 2, 3; F 22 3; "Hollywood Bound".

For the "umpiest" music in the land  
Hear Bob Smith and his German band.

**CLYDE SPARKS****Scientific**

Bumble "B" 1; Theatre Guild 2, 3; Boys' Glee Club  
1, 2, 3; Band 1; Orchestra 1, 2; Social Science Club 3.

He is our playboy, debonaire,  
Who brings to watch us, ladies fair.

**ELEANOR SPARKS****Language**

Bumble "B" 1, 2, 3, Assistant Business Manager 3;  
Quill & Scroll 2, 3; Girls' Glee Club 1, 2, 3; Mixed  
Chorus 2, 3; Orchestra 1, 2, 3; Social Science Club  
3; Extemporaneous Speaking 2; String Quartet 2, 3;  
"Hollywood Bound".

Of our circus she is the queen,  
The nicest one you've ever seen.

**GRETCHEN SPARKS****Language**

Scrollette 3; Theatre Guild 1, 2; Girls' Glee Club 1,  
2; Orchestra 1; Life Guard 1, 2.

She's dainty and graceful and looks only ten.  
She's our circus's talented equestrienne.

**FLORENCE STUMBO****Scientific**

Social Science Club 3; Phi Chi A 3.

A thoughtful young lady, and very demure,  
As an aerialist she is no amateur.

**ARLENE STURTZ****Commercial**

Commercial Club 2, 3.

She handles her bicycle with extreme care,  
As she rides on a platform way up in the air.



# SENIOR CIRCUS SWEETS

**BIT O' HONEY . . .**

Enid Breedlove  
Jane Pestotnik  
Leatrice Sturtz  
Lorena North

**OLD NICK . . .**

Harry Jorgenson  
Jerry Wells  
Bill Chance  
Paul Brogden

**BABY RUTH . . .**

Ruth Nygren  
Ruth Myers  
Ruth Brunton

**CHUMMIES . . .**

Arline Eaton  
Jane Buechler  
Dorothy Anderson

**MR. GOODBAR . . .**

Robert Whittlesey  
Clarence Rice

**CLARK . . .**

Clark Nelson

**DAIRY MAID . . .**

Velma and Rowena Boyd

**CLUSTER . . .**

George Sturtz  
Frank "Spike" Barrett  
Junior Brown

**TANGO . . .**

Gretchen and Clyde  
Sparks

**PIE FACE . . .**

William Grotheer  
Mark Schroeder

**SNICKERS . . .**

Darlene Hanson  
Eudora Arnold

**PEPPERMINTS . . .**

Max Hall  
George Dutton  
Marshall Phillips

**CRACKERJACKS . . .**

Bob Shaw  
John Lindell  
John Berg

**LEMON DROPS . . .**

James Kading  
Marjory Robertson  
Frances Smith

**GUM . . .**

Darrell Berg  
Marcella Webb

**SUCKERS . . .**

Dwight Anderson  
Kenneth Jones

**TAFFY . . .**

Darrell Hanson  
Clayton Lander

**RED HOTS . . .**

Gerald Peters  
Charlotte Burgess

**BUTTERSCOTCH . . .**

Ellen Thompson  
Naomi Wallace

**CORN CANDY . . .**

Junior Munson  
Arlene Sturtz

**HONEY ALMOND . . .**

Jeanne Pratt  
Bernice McVicker  
Dorothea Jipp

**PEANUTS . . .**

Joe Wells  
Phillip Ruschmeyer

**POWER HOUSE . . .**

Jimmy Reynoldson  
Frank Linderblood  
Bob Paulson

**KISSES . . .**

Jean Meyers  
Mark Younggren  
Joyce Olson

**SMOOTH SAILING . . .**

Marjory Carlson  
Betty Likely  
Emma Holmes

**SUGAR CANDY . . .**

Frances Douroumes  
Idris Vernon  
Arlene Hiatt  
Marjory Buechler





## S E N I O R C I R C U S

### GEORGE STURTZ

Commercial

Football 1, 2; Basketball 1, 2.

At his desk he sits and ponders all day,  
Answering fan mail from far away.

### LEATRICE STURTZ

Commercial

Girls' Glee Club 1, 2, 3; Commercial Club 2, 3;  
Pep Club 2, 3; "Hollywood Bound".

A spectator fair, with escort so tall,  
Without her 'twould not be a circus at all.

### VIRGINIA STURTZ

Commercial

Commercial Club 2, 3.

Virginia's a bicycle rider, too,  
And so we've a sister act for you.

### VIOLET SUDDERBERG

Commercial

In and out her needle goes,  
As she sews performers' clothes.

### MADELEINE THOMAS

Commercial

Pep Club 3.

A friend of ours, she's always there  
To listen to the trumpets' blare.

### ELLEN THOMPSON Scientific, Social Science

Student Council 2; Bumble "B" 1, 2, 3; Theatre  
Guild 2, 3; Girls' Glee Club 1, 2, 3; Commercial Club  
2, 3; Social Science Club 2, 3, Vice-president 3; Phi  
Chi A 3; Declamatory 2; Life Guard 2; Pep Club  
2, 3; "Pigs".

Active in other things outside of class,  
Is this girl whose riding thrills the mass.

### JANET THOMPSON

Language

Class Officer 3; Student Council 3; Theatre Guild 2,  
3; Social Science Club 3; Pep Club 3; Life Guard  
1, 2, 3; Swimming Squad 1, 2, 3; "Thomas Cook  
Ltd".

With auburn hair flying, she dances by,  
The law of gravity to defy.

### IDRIS VERNON

Commercial

F 22 3; Pep Club 3.

In circus tasks that she must do  
Her enthusiasm brings her through.

### NAOMI WALLACE

Scientific

Bumble "B" 1, 2, 3, Editor 3; Girls' Glee Club 1, 2, 3;  
Social Science Club 3; Phi Chi A 3; Pep Club 2, 3;  
Librarian 2, 3; "Hollywood Bound".

So trim and neat—and to her we'll go  
For advice, for we're sure that she will know.

### MARCELLA WEBB

Commercial

A pleasant girl, who tells the truth,  
She stands inside a ticket booth.

### JERRY WELLS

Scientific

Student Council 2; Bumble "B" 2; Theatre Guild 3;  
Social Science Club 3; Football 2, 3; Track 2, 3;  
Basketball 2, 3.

As a clown he delights in telling a pun,  
As a student his work is never done.



**JOE WELLS****Scientific**

Bumble "B" 1, 2; Debate 1; Social Science Club 2,  
2. President 3; Class Basketball 1, 2, 3; Hi-Y 1.

"This way, folks, come right along."

Yells Joe B., our barker, with a voice so strong.

**ROBERT WHITTLESEY****Scientific**

Bumble "B" 2; Theatre Guild 1, 2, 3; Boys' Glee  
Club 1, 2, 3; Mixed Chorus 1, 2, 3; Orchestra 1, 2, 3,  
Secretary 2; Social Science Club 3; Arts & Craft  
Club 3; Hi-Y 2, 3; String Quartet 1, 2; "Pigs";  
"Gas"; "Hollywood Bound"; "Adventures of Stephen  
Foster".

A person whose talents we must not neglect  
Is Bob, an aspiring young architect.

**LOWELL WIRTZ****Agriculture**

His airplane starts with a sneeze and a cough;  
One moment now, and he'll be off.

**LOWELL YOUNG****Commercial**

Basketball 1, 2, 3.

He never misses his flying trapeze,  
Nor does he miss a chance to tease.

**MARK YOUNGGREN****Scientific**

Band 1, 2, 3; Social Science Club 3; Intramural  
Basketball and Swimming; Pep Club 2, 3; Drum  
Major.

Ice skating is this fellow's work,  
One duty he will never shirk.



# SENIOR CLASS WILL

*We*, the Senior Class of 1938 of the first  
party, being sound (?) of mind at the time of drawing up this testament do here-  
by bequeath to the future seniors of Boone High of the second party, the sum  
total of our mental, physical, and tangible possessions contained in the following:

Item: Our laudable spirit of cooperation, our intellectual achievements, our  
leadership and our ability to accomplish arduous undertakings are hereby  
bequeathed to the graduating class of '39. Tsk!

Item: Paul Brogden bequeaths his option on Dorotohy Erickson to Bill Kading.

Item: Junior Munson leaves his dancing ability to that dashing Romeo, Hugh  
Powers.

Item: Arlene Hiatt bequeaths her faithfulness to her absent boy friends to  
Jacqueline Doran who will need it next year.

Item: Robert Whittlesey leaves his ability to "slap that Bass" to Arthur Clarke.

Item: Clayton Lander graciously consents to allow "Monk" Davis to carry on  
in the swing band.

Item: Gretchen Sparks leaves her sophisticated airs to Mary Jo Bostwick.

Continued on page 20



---

## S E N I O R C L A S S W I L L

Continued from page 19

- Item: Lowell Young relinquishes his scoring ability to Ray Peters.
- Item: By urgent request from Paul Brogden, Jerry Wells, and Bill Chance, the warning "Hands Off!" is left to any admirers of their better halves.
- Item: Phil Ruschmeyer passes his Napoleonic stature to Jack Nordstrom.
- Item: Bernice McVicker and Gretchen Sparks bequeath to Irene Anderson and Rachel Jean Hansen a large portion of their dancing ability.
- Item: To Jean Case, Alberta Robertson, and Norma Hurst is left Helen Crouse's, Jeanne Pratt's, and Joyce Olson's dislike (?) for the stronger sex.
- Item: To Viola Peterson is willed a surplus of sweet modesty and graciousness by Enid Breedlove, Frances Douroumes, and Jane Pestotnik.
- Item: Junior Brown, "Spike" Barrett, and George Sturtz bequeath their personal recipe for having a "hot time in the old town tonight," to Harlan Herrick and Robert Dennert.
- Item: To Lauren Taylor, Ray McIntosh, and Don Harker is willed (if they need it), Harry Jorgenson's, Clark Nelson's and Junior Munson's way with women!
- Item: Lorena North and Helen Palmer bequeath their never ending friendship to Leona Krug and Marjorie Kueck.
- Item: Marjory Carlson bequeaths her secretarial ability to Evelyn Martin.
- Item: Jimmy Reynoldson and Joe Wells will their clay pipes to Bob Palmer and Charles (Chuck) Swanson.
- Item: Agnes Hodgson passes to Eileen Cartwright her technique (?) at transferring her affections from one male to another as fast as they come.
- Item: To Mitchell Enich goes Mark Schroeder's nerve and abdominal fortitude.
- Item: Idris Vernon graciously bequeaths her typing speed and accuracy to good-natured Roger Sullivan.
- Item: The politeness of Clark Nelson, Harry Jorgenson, and Bill Chance is gladly willed to Bob Cranmer and George Brown.
- Item: To Boone High we leave our love and our wishes for a successful future; but we reserve the right to retain, if only in our minds, those dear familiar places which gave to us so many friends and pleasant times.

Messrs. Frank & Stein.



# • ACTIVITIES •



LEAVERTON





FIRST SEMESTER STUDENT COUNCIL

## STUDENT COUNCIL

President	Clark Nelson
Vice-President	Bernice McVicker
Secretary	Enid Breedlove
Executive Board	Clayton Lander, Robert Allender, Charlotte Burgess, Enid Breedlove, Clark Nelson, Bernice McVicker, Ethel Likely, Robert Lamb.

The executive branch of our circus has endeavored to promote co-operation among home rooms through discussions, and thus make for greater efficiency in the operation of this complicated organization. An executive board was installed to work on problems before presenting them to the council as a whole and in this way save time and promote better organized council discussions.

During the first semester two main problems called for solution, namely, the drafting of a constitution and clearing the halls of waste paper. With the opening of the second semester the constitution went into effect and the appearance of the halls was much better.

Continued on page 23





SECOND SEMESTER STUDENT COUNCIL

## S T U D E N T C O U N C I L

Continued from page 22

Then the council tackled the problem of transferring the management of the master keys from teachers to students and placing upon the school as a whole the responsibility for orderly hall conduct. In connection with this project the auditorium was opened to students for a visiting room before school in the mornings and afternoons. There are still many difficulties to be worked out before the system will operate at its best, but the council has taken steps in the direction of more student government.

Another project of the council during the second semester was the sponsorship of several amateur contests which were presented by the students in assemblies and which proved to be very entertaining.

In order to succeed in these endeavors, the council is dependent upon the co-operation of every student and home room.







Back Row: Wanda Richmond, Margaret Ann Peters, Helen Palmer, Eugene Crandell, Marjory Carlson, Charlotte Burgess, John Berg, and Marie Seymour.  
Front Row: Elizabeth Handschin, Leah Schultz, Audree Olson, Clarence Rice, Elaine Carson, Letha Richards, Betty Likely, and Tom Benson.

## SCROLLETTE STAFF

EDITOR	Clarence Rice
ASSISTANT EDITOR	Audrey Olson
BUSINESS MANAGERS	Wanda Richmond, Mary Jo Bostwick
ADVERTISING SOLICITORS	Elizabeth Handschin, Elaine Carson Leah Schultz, and Margaret Ann Peters
SENIOR EDITORS	Letha Richards, Betty Likely
ATHLETICS	John Berg
ACTIVITIES	Betty Likely, Gretchen Sparks
FEATURE EDITOR	Helen Palmer
ARTIST	Eileen Leaverton
HUMOR	Thomas Benson
CALENDAR	Marie Seymour
PHOTOGRAPHERS	Eugene Crandell, Dean Wilson, Marshall Phillips
TYPISTS	Marjory Carlson, Charlotte Burgess
ADVISERS	Mrs. Stevens, Miss Shaler, Mr. Hartley





## B U M B L E " B " S T A F F

- NEWS EDITORS . . . Marjory Carlson, Naomi Wallace, Irene Anderson, Emma Holmes, Avis Dodge, Rachel Jean Hanson
- ADVERTISING MANAGER . . . . . Eleanor Sparks
- ASSISTANT ADVERTISING MANAGER . . . . . Mary Lee Rosengreen
- CIRCULATION MANAGER . . . . . Nadine Amandus
- SPORTS EDITOR . . . . . Bill Brierty
- COPY EDITORS . . . Marjory Carlson, Naomi Wallace, Irene Anderson, Emma Holmes, Avis Dodge, Rachel Jean Hanson
- FEATURE WRITERS . . . Janice Wegele, Mary Ann Zeigler, Du Bois Johnson, Glee Barth, Marion Allen, Jacqueline Doran
- REPORTERS . . . Ronald Hinricks, Anna Johnson, Lucy Canakes, Janet Hill, Arlene Willis, Mary Elizabeth Lees, Sylvia Robertson, Merlyn Williams, Leona Krug, Marjorie Shadle, Marjorie Kueck, Jean Gebert, Imogene Carpenter, Florence Walker, Edna Martin, Virginia Erickson, Robert Birney, Doris Mae Dornan, Harlan Herrick, Lois Peterson, Dorothy Scharnweber, Marjorie Schwien,
- ADVERTISING SOLICITORS . . . Nadine Amandus, Elizabeth Handschin, Ellen Thompson, Margaret Ann Peters, Jean Meyers, Florence Birney, Kenneth Finch, Muriel Pearson, Jean Case, Ruth Myers.
- COLLECTORS . . . . . Harry Jorgenson, Frank Linderblood, Phyllis Finley
- EXCHANGE . . . . . Dorothy Moore, Betty Hora
- JUNIOR HIGH STAFF . . . Patricia O'Connell, editor; Thelma Richards, David Sullivan, Virginia Grotheer, Robert Erickson, Martha Huddleston, Darwin Brooks, Loren Downey, Richard Tillson, James Soper, Marie Clarke, Martha Jean Lebo, Doris Weirnsberger, Calista Olander.
- ADVISERS . . . . . Miss D. Hansen, Miss Nowack, K. P. Longnecker





Back Row: Nadine Amandus, Marjory Carlson, Clarence Rice, Betty Jean Nelson, Bill Brierty, Avis Dodge, Ronald Hinricks, Eleanor Sparks, and Janice Wegele.  
Front Row: Ellen Thompson, Mary Lee Rosengreen, Helen Palmer, Emma Holmes, Rachel Jean Hanson, Irene Anderson, and Naomi Wallace.

## QUILL AND SCROLL

President . . . . .	Naomi Wallace
Vice-President . . . . .	Emma Holmes
Secretary . . . . .	Mary Lee Rosengreen
Adviser . . . . .	Miss Dagmar Hansen

Quill and Scroll is an international, honorary, journalistic organization for high school students. To be eligible for membership a student must rank in the upper one-third of his class in scholarship, must have done outstanding work in some field of journalism, must be recommended by the adviser, and approved by the national secretary. The following students were initiated into the Lorena Ericson Chapter this year: Avis Dodge, Rachel Jean Hanson, Irene Anderson, Naomi Wallace, Marjory Carlson, Bill Brierty, Ronald Hinricks, Janice Wegele, Mary Lee Rosengreen, Nadine Amandus, and Ellen Thompson, all from the Bumble "B" staff, and Clarence Rice, Audrey Olson, Betty Likely, Letha Richards, Eileen Leaverton, Wanda Richmond, Mary Jo Bostwick, Elizabeth Handschin, Elaine Carson, Leah Schultz, Margaret Ann Peters, John Berg, and Marie Seymour, from the Scrollette staff.





## NATIONAL HONOR SOCIETY

*H*ere we find members of our circus who are outstanding for their scholarship, character, leadership, and service. Boone's chapter in this society was organized in 1933. Members of the senior class chosen for entry pledge eternal loyalty to the National Honor Society and to the standards which it represents. They are permitted to wear the honor pin on which the flaming torch and keystone are symbols of purpose and high ideals. This year's honor society students are: Enid Breedlove, Charlotte Burgess, Marjory Carlson, Helen Crouse, Angie Dickeson, Frances Douroumes, William Grotheer, Lois Hageleen, Max Hall, Betty Likely, Frank Linderblood, Ruth Myers, Jane Pestotnik, Dewayne Phipps, Clarence Rice, Letha Richards, Marie Seymour, Eleanor Sparks, Gretchen Sparks, Ellen Thompson, Idris Vernon, Naomi Wallace, and Robert Whittlesey.







## THE THEATRE GUILD

### FIRST SEMESTER

Harry Jorgenson . . .  
 Betty Jean Nelson . . .  
 Arlene Hiatt . . .  
 Edgar Updegraff . . .  
 Charlotte Burgess . . .  
 Miss Jeannette Lloyd . . .

### OFFICERS

President . . .  
 Vice-President . . .  
 Secretary . . .  
 Treasurer . . .  
 Historian . . .  
 Adviser . . .

### SECOND SEMESTER

Harry Jorgenson  
 Junior Munson  
 Evelyn Martin  
 Edgar Updegraff  
 Charlotte Burgess  
 Miss Jeannette Lloyd

*I*n the center ring of the main tent, we find the members of the Theater Guild. By combining the two former dramatic clubs, Masque and Buskin and Boone High Players, the Theater Guild was organized under the advisership of Miss Lloyd, assisted by Misses Shaler, Schuldt, Wernli, and Whitney.

The club has been divided into four sections: acting, directing, technical, and magazine. This gives each member an opportunity to study the phase of play production in which he is most interested.

For special programs, the Theater Guild presented the plays "Seeing Double", directed by Evelyn Martin and Mary Katherine Veal, and "The Ring and the Look," directed by Elizabeth Handschin, Margaret Ann Peters, and Nadine Amandus. During the Christmas season Mrs. Harley Walker read for the club "The Last Word", by Van Dyke.

Boone High's dramatic stars have not confined their talents to the limits of the Big Top. They presented the one-act play "Gas" before the Order of White Shrine and The Boone Womans' Club. The cast for this play included

Continued on Page 32





## PUBLIC PLAY "PIGS"

The public play "Pigs", given by members of the Theatre Guild was one of the most successful performances staged under the Big Top this year. Acknowledgement is due to the excellent cast, the efficient production staff, and to Miss Lloyd for her very capable direction of the play.

### CAST

Thomas H. Atkins Sr.	Robert Whittlesey	Spencer Atkins	Harry Jorgenson
Thomas Atkins Jr.	Bill Brierty	Mildred Cushing	Marian Allen
Hector Spencer	John Shadle	Lenora Hastings	Florence Walker
Grandma Spencer	Ellen Thompson	Mrs. Smith Hastings	Martha Ann Jordan
Ellen Atkins	Betty Jean Nelson	Dr. Springer	Charles Gibson

### PRODUCTION STAFF

Assistant to Director	Ione Holstrom
Stage Manager	Veryl Jennings
House Manager	Edgar Updegraff
Business Management	Bill Chance, Jack McCambridge, Lucy Canakes, Jean Case, Arthur Carver, Marjorie Brogden, Evelyn Martin.
Light Crew	Bob Kelly, Clayton Hendricks
Stage Crew	Bill Kading, Marshall Phillips
Make-up	Miss Lamb, Evelyn Martin, Ruth Patterson, Ruth Myers, Eudora Arnold.
Costume Crew:	Delores Olson, Norma Jean Alsin, Glee Barth.
Faculty Advisers:	Violet Wernli, Annetta Schuldt, Doris Shaler, Ethel Whitney, Jeannette Lloyd.
Property	Wanda Richmond, Mary Lee Rosengren, Charlotte Burgess.







GIRLS' FIRST GLEE CLUB



GIRLS' SECOND GLEE CLUB





BOYS' GLEE CLUB



MIXED CHORUS





## BOONE HIGH BAND

Student Director	Clayton Lander
Secretary	Lois Donaldson
Librarian	Robert Paulson
Director	Mr. Fields

What is a circus without a band? Our band has furnished most of the acts of our circus with enjoyable and entertaining music. At the head of the parade, Alberta Robertson, the head drum major, with the aid of the following twirlers: Ethel Likely, Annabelle Hodgson, Ruth Anne Herrald, Mark Younggren, Donald DeFrance, and Donald Harker aroused the spirit and enthusiasm of the circus crowd.

The band has displayed its talent at all football and basketball games. At the end of the basketball season, it concentrated entirely on the number to be played in the contest at Webster City, April 9.

In addition to playing for many performances of the circus, the band appeared at the Boone Woman's Club Spring Festival, the County Basketball Tournament, and the Rural Drama Contest.



## THE THEATRE GUILD

Continued from page 28

Robert Whittlesey, Betty Jean Nelson, Harry Jorgenson, DuBois Johnson, Arlene Hiatt, and Angie Dickeson. As a return courtesy, the Womans' Club presented a program at a Theater Guild meeting in March. One of the biggest projects of this club was the presentation of the public play, "Pigs".

We look to the troupers in the Theater Guild to continue the fine quality of work done during the past season.





## BOONE HIGH ORCHESTRA

Student Director	Clayton Lander
Secretary	Betty Knudsen
Librarian and Concert Mistress	Enid Breedlove
Director	Mr. Fields

*U*nder the big top, the orchestra has been one of the main attractions. Capably directed by Mr. Fields, it has responded admirably to the many demands for musical entertainment this year.

Besides playing for all the evening programs in the big tent, the orchestra played at the Boone Woman's Club Spring Festival.

In the sub-district contest held at Jefferson Jane Pestotnik, trombone soloist; Eleanor Sparks, violin soloist; Betty Knudsen, viola soloist; Lois Donaldson, flute soloist; Betty Likely, piano soloist, and Jane Mauck, contralto soloist, all won superior.

Leo Eiserman, cornetist; Bob Fields, tenor, and the girls' sextette won an excellent rating. Vonice Anderson, soprano, won a good rating.

The orchestra and those winning superior in the sub-district contest entered the district contest at Webster City, April 9. This contest was not held until after the Scrolllette went to press.







ARTITEERS



ARTS AND CRAFTS





HERRALD

JIPP

WALKER

## D E C L A M A T O R Y

ADVISER

Miss Lamb

*O*ur circus actresses and actors have been exceptionally busy this year, having participated in several distinct projects.

Between fifty and sixty students entered the declamatory work in the fall, but the group was gradually reduced to include three students in each division: oratorical, dramatic, and humorous. These students, who participated in the home contest with Dr. Harry Barnes of the University of Iowa as judge, were: Jane Buechler, Ronald Hinricks, and Dorothea Jipp in the oratorical division; Ethel Likely, Florence Walker, and Janice Wegele in the dramatic division; and Lois Hageleen, Ruthanne Herald, and Mary Lee Rosengren in the humorous division. The winners, Dorothea, Florence, and Ruthanne, were presented cash awards by the Boone Business and Professional Women's Club, and were eligible to enter state competition. Ruthanne placed first in the preliminary contest, but was eliminated in the sub-district contest.

The extempore speaking contest began with about seventy students. Through a series of contests, this group was reduced to the following students who competed before a senior high assembly March 10 with Miss Slosson, Mr. Thorngren, and Mr. Quinn as judges: Virginia Heitcamp, Shirley Betzenderfer, Robert Hoyt, Ray McCoy, and Wesley Laub. The winner, Ray McCoy, spoke at the district contest at Council Bluffs on April second, where he was eliminated.

There Boone also participated in several other events: original oratory, interpretative reading, and a special microphone presentation of a one-act play. Original oratory was a project of the public speaking class, each member writing and presenting his own oration. The final contestants were Marjorie Hammond,

Continued on page 44





Back Row: Lois Peterson, and Ethel Likely.  
Front Row: Harlan Herrick, Lauren Taylor, DuBois Johnson, and Robert Kelly.

## BOONE HIGH DEBATE

*I*n one of the side shows of our circus, a series of important debates has ensued. Our team includes DuBois Johnson, Ethel Likely, and Lois Peterson on the affirmative side, and Bob Kelly, Harlan Herrick, and Lauren Taylor on the negative side. The subject this year is: Resolved that the several states should adopt a unicameral system of legislature.

The first trip was to Council Bluffs, November 20, to attend the debate clinic which included, for the most part, Omaha schools. No decisions were made. At Fort Dodge, December 11, the team won four out of eight debates. Later in the season dual non-decision debates were held with Perry, at Boone and Perry. The debate with Eldora Training School was also non-decision. At the tournament January 22, at Winterset, the team won four out of eight debates. February 18 and 19 our team competed in the Southwest Iowa District Tournament at Creston, winning eight out of sixteen debates. This was a round robin tournament. At the McCahille tournament held at Drake University in Des Moines, March 11 and 12, Boone won two out of four. At Perry, March 19, we won two out of eight debates.

The team and their adviser, Mr. Quinn, deserve much credit for the splendid work they have done this year.





SOCIAL SCIENCE CLUB



COMMERCIAL CLUB





## S C I E N C E C L U B S

### PHI-CHI-A...Girls' Science Club

This is the group which studied and analyzed your make-up, that very important contributor to your success as circus members. It was organized just this year by girls in the physics and chemistry classes who wish to gain scientific information in addition to the regular classroom work.

During the past year the club has been concerned with your face creams, powders, dentifrices, nail preparations, and other cosmetics. The meetings have been held semi-monthly and spent alternately in studying products and analyzing them in the chemical laboratory. The study meetings consisted of talks given by members. During the laboratory meetings each girl tested her favorite brand and results were tabulated so as to make the study as complete as possible.

After this survey of cosmetics, the girls chose to study foods. For future work they look to other scientific subjects, chemical and non-chemical, as broad and profitable fields of study.

Phi-Chi-A extends its sincere appreciation to Mr. Bechtel for the time and effort he has given to make its first year a successful one.

### BOYS' SCIENCE CLUB

This year the members of the Boys' Science Club have made our circus life more entertaining and educational than it has been in the past. Their objective has been, learning to operate our moving picture machine and they were responsible for the presentation of many types of pictures in various classrooms. The boys have met with Mr. Cunningham at regular intervals to gain practice in the operation of the machine.

The students of Boone High School are indebted to this group for a new and practical system of learning by actual picturization of difficult phases of studies.





BOYS' SCIENCE CLUB



PEP CLUB





Back Row: Betty Munson, Sylvia Robertson, Donald DeFrance, Everett Casey, Donald Fronsdaht, John Lindell, Frances Douroumes, Bob Smith.  
Front Row: Arlene Willis, Nadine Amandus, Lillian McMahon, Frances McIntyre, Marjorie Boyles, Florence Birney, Avis Dodge, Lucy Canakes, Sarah Emerson.

## "F-22" THE CAMERA CLUB

President	Dean Wilson
Vice-President	Eugene Crandell
Secretary-Treasurer	Marjory Boyles
Adviser	Mr. Bechtel

In order to promote interest in the various phases of photography, the camera club, "F-22", was organized this year under the direction of Mr. Bechtel. Membership is not limited to students in senior high but includes junior college students as well.

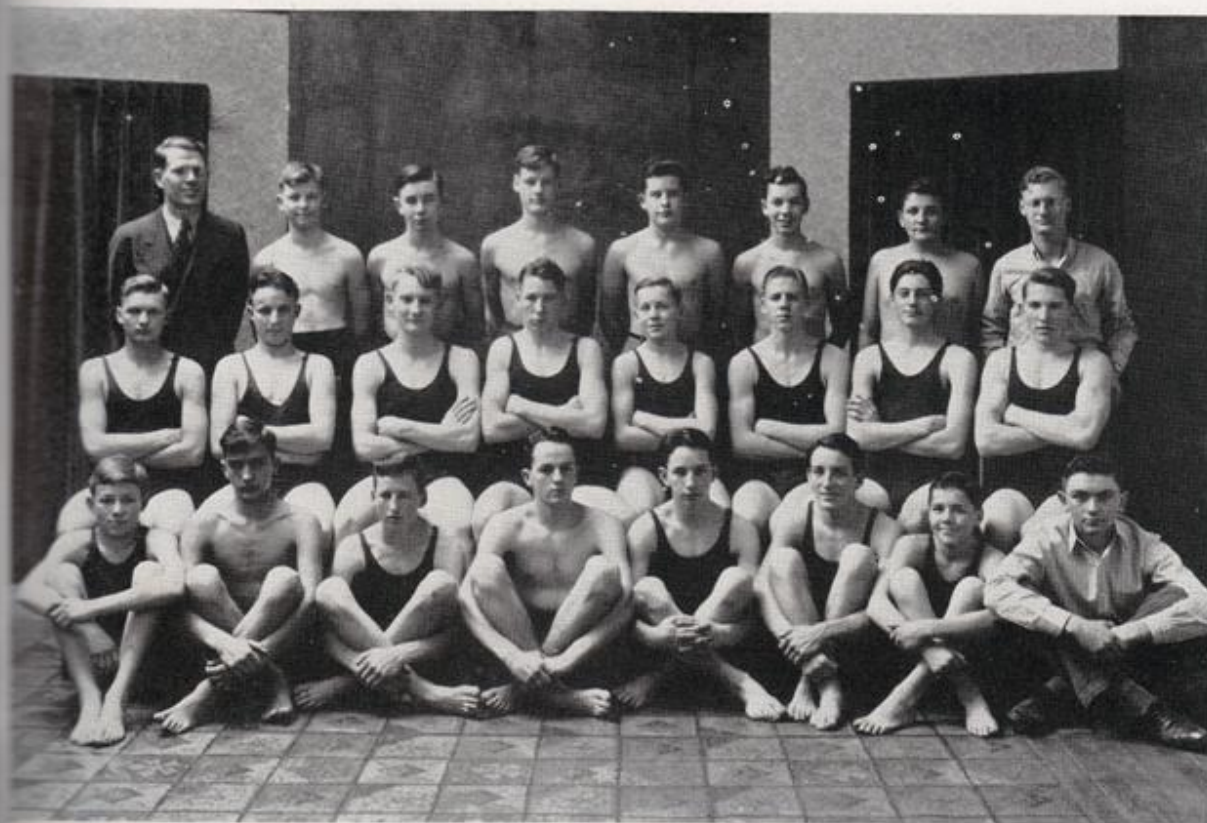
The work includes picture-taking, developing, enlarging, and also a knowledge of various types of cameras and the operation of each.

Among the interesting speakers who have come before this group is Professor William E. Hunter of Iowa State College, who talked on the various phases of photography.

The club activities have included hikes on which the members had an opportunity for picture studies, and participation in the Spring Festival sponsored by the Boone Woman's Club, where the students contributed a fine display of photographic art. A committee composed of Eugene Crandell, Betty Hora, and Florence Birney has edited a publication called "Flash" which prints items of interest to club members.

Although the present membership of twenty-eight students is comparatively small, the club has been one of the most active, worthwhile organizations in the Boone High Circus, and interest in it is increasing.





## S W I M M I N G T E A M

*B*oone High Toreadors took to the water this year, after swimming was made a major sport, and as a result the Toreador Swimming team coached by C. S. Roberts went through a number of scheduled meets, doing very well for their first year in actual competition.

The Boone Tankers opened their season by losing to Lincoln swimmers of Des Moines, but fans were impressed by the good showing of the Toreadors. Updegraff won honors for Boone when he placed first in the one hundred yard breaststroke and second in diving. Boone high fans got a glimpse of their first swimming meet when Boone lost to Fort Dodge. Bill Chance won a first in diving. This was the only event in which Boone placed first.

In the following meets the Toreadors encountered Roosevelt of Des Moines, Fort Dodge, Lincoln, and Ames high schools. The Toreadors were completely shut out by Roosevelt, but in the return matches with Lincoln and Fort Dodge much improvement was shown even though they lost both meets. Boone's first victory came when the Ames splashers were defeated in an exciting meet.

Winding up the swimming season for 1938, the Boone swimmers lost a match to the powerful Omaha Tech swimming team, which is one of the best teams in Nebraska. Following the meet, Omaha Tech gave an exhibition, showing the evolution of swimming.

As the swimming season ended, plans were already being made for the forthcoming year. Robert Cramner, who showed his ability by winning several firsts in the 40 yard dash, was elected to captain the 1939 swimming team. Bill Chance, who served his last year by winning four firsts in diving throughout the year, was elected honorary captain for the past swimming season.

Continued on page 44





## P I G S K I N P A R A D E

*I*nauguration of the '37 football season at Boone High School cost the Toreadors their first defeat, the loss of a heart-breaking battle with Centerville, 7 to 6. The week after saw the Toreadors in action against Oskaloosa. They could not stop the Indians and lost a decisive battle, 26 to 6.

The following week Boone lost to Jefferson, 7 to 0. In the next game, Fort Dodge earned the right to retain the rusty horseshoe another year by downing the Toreadors in a pouring rain, 13 to 0. Interceptions of passes aided the Marshalltown Bobcats in taking the Boone High Toreadors in a close game, 14 to 0.

Plenty of action was provided in the homecoming game of the Toreadors with the Grinnell Little Pioneers, as the game ended in a 13 to 13 draw.

In the next game, a fourth quarter rally brought a touchdown and victory over the Toreadors to the Logan Panthers by a slim margin, 8 to 7. By their spectacular runs, the Newton Cardinals managed to avenge the defeat of a year ago by trimming the Toreadors, 13 to 0.

In the annual armistice day battle, the Boone team was trounced by the Ames Cyclones, 52 to 0. The Toreadors could not hold the powerful Ames Cyclones and were taken by storm.

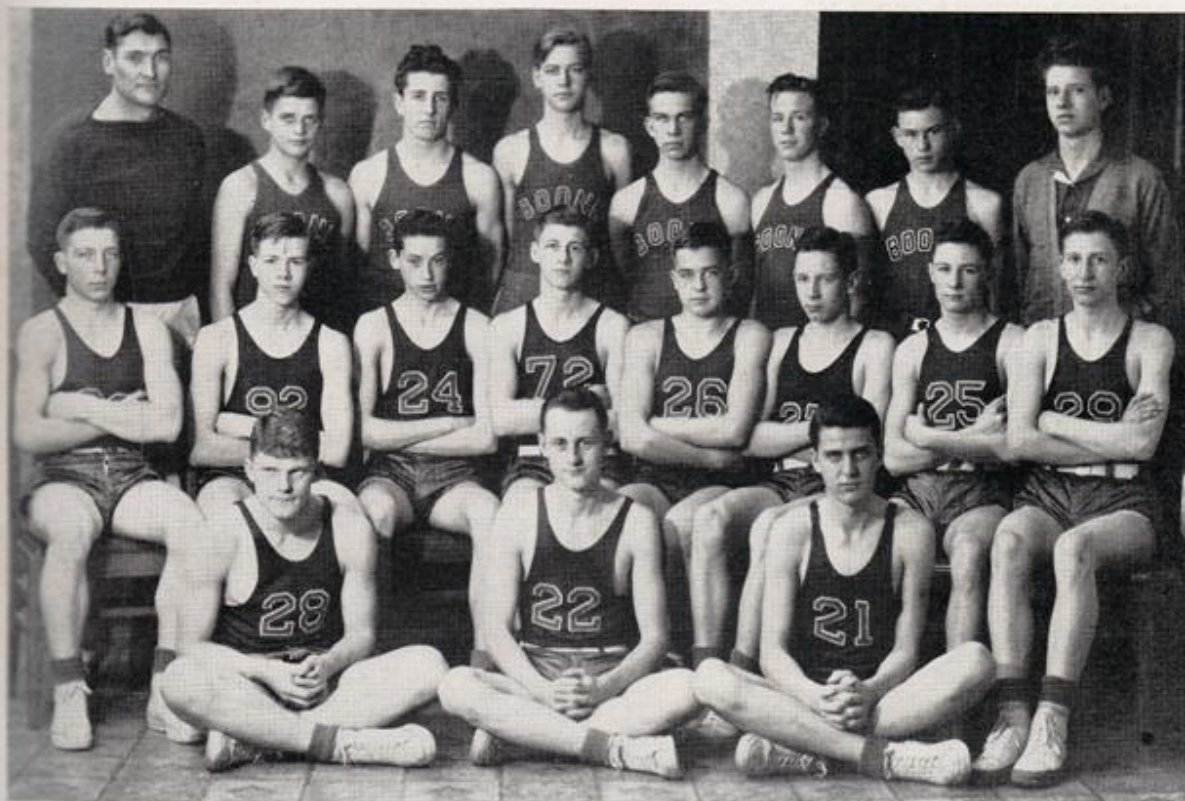
Although the Toreadors did not chalk up a good football record, they learned to take defeat with a smile and are determined next year to ride on high again in the football league and to live up to the past records of Boone High Toreadors.

### HONORS TO BOONE GRID PLAYERS

Mark Schroeder heads the list of honor gridders by rating honorable mention on North's All State team, and on the Iowa Daily Press Association team. He also gained a berth on the second all-conference team. Captain Marshall Phillips was picked as second all-conference team tackle, and gained honorable mention on the Iowa Daily Press Association team.

Continued on page 55





## BASKETBALL SEASON

Mid-semester graduation, better known every year to Coach C. T. Mau and Boone High fans as The Black Menace, again attacked the Boone High basketball team and left behind, after claiming George Dutton, Lowell Young, Arthur Crouthamel, and Paul Brogden as its victims, a new, inexperienced team. In spite of this fact Boone won the first game of the second semester, but from then on the strong opposition proved too much for the Toreadors. Every game played was a close, hard fought game with every boy battling to the finish.

The Toreadors opened their season by losing the first two games. The first one, lost to Albia, was decided by a free-throw; the second was lost to East High of Des Moines. From then on the Toreadors hit a fast pace, winning six consecutive games. Starting out by defeating Roosevelt High of Des Moines, the boys without much trouble downed Oskaloosa, Centerville, Grinnell, Newton, and Fort Dodge. In the next two games the Toreadors were defeated in thrilling encounters by the Ames Cyclones and the Marshalltown Bobcats, two very good basketball teams.

The second semester team led by Schroeder and Anderson started out successfully when the revamped Toreadors eked out a victory over Fort Dodge High. The next games were five straight defeats with Boone losing to Ames in the final game of the season. Following the Fort Dodge game, Boone lost consecutively to Oskaloosa, Grinnell, Marshalltown, Newton, and Ames. The Oskaloosa game was an over-time game, but the Toreadors fell short of the Oskaloosa Indians by two points in the extra period.

The Toreadors were quickly subdued in the sectional tournament when they met the Ames Little Cyclones and were downed in the first round of the tournament play after a valiant last quarter rally which fell short only a few points.

Continued on page 55