

The  
Scrolllette



1937



Melvin's Lippens  
"Mel", 38' or less

{ Rowena Boyd } owners  
+  
{ Elma Boyd }

Arvid Nelson

Marie Seymour  
"38"

Margaret Bayles Jones

Mac Jones Link  
" 38"

Louisa, North  
"31"

Mac 38  
Earl Thompson 38  
Helen 39

THE SCROLLETTE

1937

Margene  
Halken  
"39"

Hilma Potts  
Sept 38  
May 38

Slovenca Stumbo  
"38"

Flaine Linn  
"38"  
with Phi  
"39"

Vila  
Pitman  
"39"

738  
Majorie Carlson  
"38"

Carlson  
Robert H. Carlson  
L. B. Carlson

*Chas. M. Adams*  
*Adeline Stutz*  
*James G. Adams*  
*Regina Adams*  
*38"*  
*39"*

Pitman "39"  
 Margie Pitman  
 "39"  
 Sally Bent  
 "39"

July 31<sup>st</sup>

39" 2

Margaret Anne Peters

Bill Chan  
1138

Reginald  
me "39"

Virginia's death  
"38" J. F. L.  
"38"

Price: 39¢

Margaret Peters

Florence

Maare

Enid "33"  
Marry Paulson "35"  
Lawrence Birney "34"  
Ed

Margaret Buckler  
"38"

Violet Suddenberg.  
"38"

Published by  
**The Senior Class**  
Boone High School

Elaine 39

Arthur "38" Crouthamel "SE."

W. F. Schuch  
Meyer Bill

Bill G.



## FOREWORD

In this 1937 Scrollette, we of the staff have endeavored  
to present a picture of happy school life, that  
you in later years may look back with  
joy on youthful days spent at  
Boone High.

---





## DEDICATION

To the memory of carefree childish days when life was  
all gaiety and play; to beautiful child-dreams of  
fairies and Mother Goose characters; in  
fact, to all that is *Youth*, we, the  
1937 Scrolllette Staff,  
dedicate this  
book.

---



E. Carlson



Whitney



Weber



Schorman



Hartley



D. Hansen



C. Carlson

*Black & White*



Bechtel



Drake



Shaler



Max



Morgan

Benson



Van Ness



Woolen



Daehler

Fieles



Thengren



Hicks



Quinn



S. Hansch



Harvey

Lamb



Johnson



Crawford



Stevens



McIntyre



Longnecker

Cunningham



Murray



Gustafson



Lindorblood



Lee



Robens



## SENIOR HIGH FACULTY

GEORGE S. WOOTEN	Superintendent
HUBERT J. VAN NESS	Principal
FAY McINTYRE	Science, Assistant Principal
WELKER BECHTEL	Chemistry, Mathematics
CAROLYN CARLSON	School Nurse
EVELYN CARLSON	Physical Training
ANNA CRAWFORD	Commercial
HAROLD R. CUNNINGHAM	Physics, General Science
FERDINAND DAEHLER	Manual Training
WILBUR DRAKE	Agriculture, Mathematics
NATHAN FIELDS	Manual Training, Mechanical Drawing, Music
FRANCES GUSTAFSON	Mathematics
DAGMAR HANSEN	English, Journalism
STENA HANSEN	Social Science
WILLIAM HARTLEY	Commercial
ELOISE HARVEY	Language, Civics, Social Science
NAOMI HICKS	Commercial
ANNA JOHNSON	Domestic Science
SYBIL LAMB	English
JENNIE LEE	Art
LOUISE LINDERBLOOD	English, Latin
KARL LONGNECKER	Biology
C. T. MAU	Athletics, Science
GRACE MURRAY	Mathematics
LYLE QUINN	Vocations
CLEO ROBERTS	Athletics, Physical Training
ELEANOR SCHORMAN	German
DORIS SHALER	French, English
HELEN SIEVERS	Music
ZOE STEVENS	English, Library
JOHN R. THORNGREN	Government, Sociology
LOLA WEBER	Commercial
ETHEL WHITNEY	Social Science

---

### SCHOOL BOARD

HENRY L. WALLACE, President	L. R. JOHNSON, Secretary
RUSSELL TESDAHL	FRED NELSON
HARLEY EDGERTON	ARTHUR EDDY

---

#### SENIOR CLASS OFFICERS

President . . . . .	Edward Buckels
Vice-President . . . . .	Mary Stump
Secretary . . . . .	Tom Hannum

Colors: Crimson and gray  
Flower: Red Carnation  
Motto: "A life, not a living"

★ ★ ★ ★ ★

## A Modern Parable

THERE was a mint on Crawford Street—a mint like and yet unlike most mints. And to this mint there came each fall rough ores, gold and silver—and much copper.

Now in the first year these ores were melted down by the mint workers. And in the second year, under the supervision of the workers, the metals began to take shape. And in the fall of the third year there began a busy period during which time the coins were polished; and upon some, values were engraved, this being left in other cases for mints farther along the way.

And so in the spring of the third year there issued forth from this mint many coins ready for circulation—all necessary for carrying on the world's business, but of various sizes and values.

There were many copper pennies and almost as many nickels. There were fewer silver dollars, and even fewer were the gold coins.

Yet together all rolled hopefully, though reluctantly, from the mint on Crawford Street to what they hoped to be a happy, useful life ahead.

—A. Pepper.







As this old woman is away on her goose,  
We're sending our seniors away on the loose;  
God knows where they'll go, and whom they will meet,  
But we know Mother Goose will guide their feet.  
She'll lead them all through thick and thin,  
And give them every chance to win.  
Her ideals are noble, her wants are few;  
We hope, dear seniors, they'll appeal to you.  
With thoughts for the future and eyes straight ahead,  
Keeping in mind the things aforesaid,  
Let's sally forth, classmates, to meet our fates,  
And pray that we'll enter the pearly gates.







## SENIOR NURSERY RHYMES

*Cleo Anderson*

CLEO ANDERSON

Commercial

He tramps around through ice and snow,  
When Cleo of Fraser a-hunting does go.

TOM ATHERTON

Scientific

Boy's Science Club 2.

Tommy was an intelligent man,  
Yes, an intelligent man was he.

KATHRYN ANDERSON

Language

Bumble "B" 3; Glee Club 1, 2, 3; Girls Sextette 2;  
Mixed Chorus 2, 3; Declamatory 2, 3; B. H. S. Players  
2, 3; Social Science Club 2, 3; "Let Who Will Be Clev-  
er."

Pretty, blonde, companionable Katy,  
Will some day be the "Singing Lady."

JOSELYN BAILEY

Commercial

I love to frolic, I love to dance,  
When school is over I'll have a chance.

HAROLD BEAN

Commercial

A gun, a mug, and a Ford V-8,  
Harold's a problem for Mother Fate.

KENNETH ANDERSON

Commercial

Football 1, 2, 3, Captain 3; Basket-ball 1, 2, 3; Student  
Council 1.

Captain of the pigskin 'leven,  
He'll surely go to football heaven.

*Lois Bennett*  
LOIS BENNETT

Commercial

Bumble "B" 2; Debate 2; Glee Club 1; Band 3.

Black eyes so very much admired,  
Men search for such 'till they are tired.

*Virginia Anderson*  
VIRGINIA ANDERSON

Commercial

Commercial Club 3.

A little girl who's quite vivacious,  
And, also, a tiny bit flirtatious.

AGNES BENSON

Social Science

Glee Club 1, 2; Social Science Club 3; Student Coun-  
cil 1.

A kind and gentle heart has she,  
To comfort friends and foes.



**DICK BETZENDERFER**

Scientific

B. H. S. Players 2, 3; Hi-Y 2, 3; Class Basket-ball 3.

Oh, he is as merry, as merry, heigh ho!  
As the light-hearted fairy, heigh ho! heigh ho!

**CHARLES BOYLES**

Scientific

Some most intently devour the news,  
But others through windows enjoy the views.

**HOMER BRIDGES**

Commercial

B. H. S. Players 3; Hi-Y 3.

I'll be a bachelor and live by myself  
With dogs, and pipes, and guns on a shelf.

**GUY BROGDEN**

Social Science

Basket-ball 1, 2, 3, 4.

Of Smoky, who is six feet, four and a half,  
There has been written many a paragraph.

**ROBERT BROWN**

Scientific

Bumble "B" 2, 3; Glee Club 2; Boys' Science Club 2; Hi-Y 3; Student Council 3; Class Basket-ball 1, 2, 3.

Twinkle, twinkle tennis star,  
How we wonder what you are.

**EDWARD BUCKELS**

Scientific

Class President 2; Basket-ball 1, 2; Football 1, 2, 3;  
Class Basket-ball 2; Glee Club 1, 2, 3; Masque & Buskin 1, 2, 3; Boys' Science Club 2; Social Science Club 3; Student Council 1, 2, 3; "Last Days of Pompeii"; "Life of Stephen Foster"; "New Fires."

The sharpest, keenest, bravest man,  
To plan, or execute a plan.

**GEORGE BUECHLER**

Scientific

Football 1, 2, 3; Wrestling 1, 2; B. H. S. Players 1, 2, 3; Boys' Science Club 2; Social Science Club 2, 3; Hi-Y 2, 3.

He neither carries a cane, nor wears a mustache,  
But even at that he cuts quite a dash.

**JEAN BURKE**

Commercial

Scrollette Business Manager 2, 3; Quill &amp; Scroll 2, 3; Commercial Club 2, 3; Social Science Club 2, 3; Student Council 1.

When this pretty nurse you do employ,  
Take care, she loves a soldier boy!

**MARY BURKE**

Language

Bumble "B" 2, 3; Basket-ball 1, 2; Social Science Club 2, 3; Treasurer 3; Student Council 1; Judge for Ex-temporaneous Speaking Contest; Pop Club.

What makes everyone love Mary so?  
O, Mary loves me, you know.

**ALICE BURNETT**

Commercial

A quiet girl with eyes of gray,  
Her many smiles make us feel gay.

**HELEN BUTTON**

Commercial

A little blonde with many joys,  
She likes the girls and loves the boys.

**MARY JANE BUTTON**

Commercial

She lies in bed till eight or nine,  
And then she rises feeling fine.

**CLEON CARSON**

Scientific

Glee Club 1, 2, 3; Science Club 2, 3; Social Science Club 3.

In time to come, it is plain to see  
Another Fred Astaire there is bound to be.

**BLANCHE CARVER**

Scientific

Glee Club 1, 2, 3; Mixed Chorus; Masque &amp; Buskin 2, 3; Science Club 1; Social Science Club 3; Scrollette Staff 3; "Wieners on Wednesday"; "Hot Copy"; "Hiawatha"; "Hollywood Bound."

"What is your fortune, my pretty maid?"  
"My hair is my fortune, sir," she said.

**ORVILLE CASEBOLT**

Commercial

Glee Club 2, 3; Declamatory 2, 3; Commercial Club 2, 3; Vice-President 3; Yell Leader 3; "Hollywood Bound."

A man of words but not of deeds  
Is something every classroom needs.

**MARILYN CLARKE**

Social Science

Glee Club 1, 2, 3; Social Science Club 2, 3.

This girl who goes by the name of Clarke  
Thinks that school is not a lark.

**BRUCE CORL**

Scientific

B. H. S. Players 1, 2, 3; Boys' Science Club 2; Social Science Club 2, 3; Student Council 1; Orchestra 1, 2, 3; Band 1, 2, 3; Hi-Y 3; Yell Leader 2, 3; "Let Who Will Be Clever"; "Treasure Island"; "Shepherds' Star"; "New Fires"; "Hollywood Bound."

Hey, Diddle, Diddle, not the cat and the fiddle,  
Just Bruce and his big bass drum.

**MILDRED CORL**

Commercial

Light brown hair and pale blue eyes,  
She's very friendly, we surmise.

**LORRAINE CRANMER**

Language

Glee Club 1, 2, 3; Masque &amp; Buskin 3; Social Science Club 3.

'Twas once upon a time when she was very young,  
That daintily she danced and prettily she sung.





## SENIOR NURSERY RHYMES

**VERNE DORAN**

Glee Club 2.

Agriculture

Needles and pins, needles and pins,  
When I get married, my trouble begins.

**PHILLIP ECKBERG**

Bumble "B" 1; Glee Club 1; B. H. S. Players 3; Hi-Y 2.

Arts and Crafts

Although the kids all call him "Flop,"  
He really is the very "top."

**MIKE ENICH**

Class President 1; Social Science Club 2, 3; Student Council 1, 2, 3; Basketball 1, 2, 3; Football 1, 2, 3.

Social Science

Male fans remember his athletic success,  
Female fans remember his "girl-shyness."

**MILDRED ENICH**

B. H. S. Players 2, 3; Student Council 2.

Language

O, listen to me, both ladies and gents!  
This young lass has lots of good sense.

**NORMAN ERBE**

Bumble "B" 1, 2, 3; B. H. S. Players 1, 2, 3; Boys' Science Club 1, 2; Social Science Club 2, 3; Glee Club 1, 2, 3; Hi-Y 1, 2, 3; Student Council 1, 2; Quill & Scroll 2, 3; Football 1, 2, 3; Class Basketball 1, 2; Class Swimming 1; "Treasure Island"; "Let Who Will Be Clever"; "Shepherds' Star"; "New Fires."

Scientific

Norman was a preacher's son,  
And he fell in love when he was young.

**MILDRED ERICKSON**

Commercial Club 1, 2; Glee Club 1, 2.

Commercial

This little girl is in school in the west,  
But we're sure she still likes Boone High the best.

**ROBERT ERICKSON**

Commercial

This young man, I've heard tell,  
Never seems to hear the bell.

**INEZ EWENS**

B. H. S. Players 3; "Shepherds' Star."

Social Science

This young lass so fair and pretty  
Is queen of the maids and belle of the city.

**HOWARD EYCHESON**

Basketball 2; Orchestra 1; Band 1; Glee Club 1.

Social Science

His interest lies in girls and fun,  
The sight of a book makes him want to run.

**LEE FELLINGHAM**

Swimming 1.

Social Science

'Tis said when he is really mad,  
There's plenty of trouble to be had.

**MILDRED FETZER**

Glee Club 1, 2, 3; Scrollette Staff 3; Social Science Club 3; Commercial Club 2, 3.

Commercial

Pretty and peppy and capable too,  
Mildred finishes what she starts to do.

**RALPH FINCH**

Commercial

His brightness rivals not the sun,  
But I have heard he's lots of fun.

**MYRTLE FOES**

Commercial

Commercial Club 2, 3.

Timid Miss Foes  
Is frightened by beaus.

**DONALD FRONSDAHL**

Scientific

Masque & Buskin 2, 3; Football 2, 3; Scrollette 3;  
"Happy Ending"; "Thomas Cook, Ltd."; "Broadcast."

When he gets the ball there's no way of knowing  
Just how far this boy is going.

**ROGER GARDNER**

Social Science

If this fellow had just one wish,  
"Twould be that he could catch a fish.

*Roger Gardner*

**WINNIFRED GERRARD**

Scientific

Bumble "B" 3; Glee Club 3; Pep Club 3; Social Science Club 3; Science Club 2; B. H. S. Players 3; Volley Ball 1, 2.

She comes when she's called; she does what she's told;

A friend like this should never grow old.

**WILMER GRABAU**

Social Science

He saw three ships go sailing by,  
To be in the Navy, he'd give his right eye.

**REX GRAYSON**

Scientific

Basket-ball 1, 2. \*

As yet I "ain't," nor you "ain't seen"  
His picture in a magazine.

**LILLIAN GRIFFIN**

Social Science

Guess what subject she liked well;  
I know 'twas math for which she fell.

**GRETCHEN GUGGER**

Scientific

B. H. S. Players 2, 3; Social Science Club 2, 3; Glee Club 2.

This charming girl doesn't live in a shoe,  
But she has so many beaus she doesn't know what to do.

**EDITH GUNN**

Scientific

Bumble "B" 1, 2; Girls' Glee Club 1, 3; Girls' Sextette 3; Orchestra 1, 2, 3; Masque & Buskin 2, 3; Social Science Club 3; Quill & Scroll 2, 3; Scrollette Staff 3; Pep Club 3; "One Word Alone."

This maiden with her flashing eyes  
Is just as jolly as she is wise.

**FRANK HAGEN**

Scientific

Science Club 2; Hi-Y 2, 3; Band 1, 2; Student Council 3.

It's hard to start an argument and keep it going long

With people who will only say, "You're absolutely wrong."

**DOROTHY HALL**

Commercial

Glee Club 1, 2, 3; Social Science Club 3; Commercial Club 3; Band 2, 3.

Quiet and blond and unassuming,

Yet if she gets started she'll go a-zooming.

**THOMAS HANNUM**

Scientific

Class Secretary 3; Scrollette Staff 3; Glee Club 1, 3; Masque & Buskin 1, 2, 3; Secretary 3; Boys' Science Club 1, 2; Social Science Club 3; Student Council 3; Hi-Y 1, 2; Football 2, 3; "Happy Ending."

Here's a handsome lad who dresses so trim,  
That every eye admires him.

**LEROY HANSEN**

Commercial

Football 2.

Little Bo-Peep has lost her sheep;  
LeRoy, the black one, was asleep.

**RICHARD HARDIE**

Commercial

Swimming 3; Commercial Club 2, 3; Treasurer 2.

Stan and Laurel don't have him beat,  
For this young man is very "neat."

**CAROLYN HARMER**

Language

Masque &amp; Buskin 3.

One she loves, two she loves,  
And more she'll love they say.

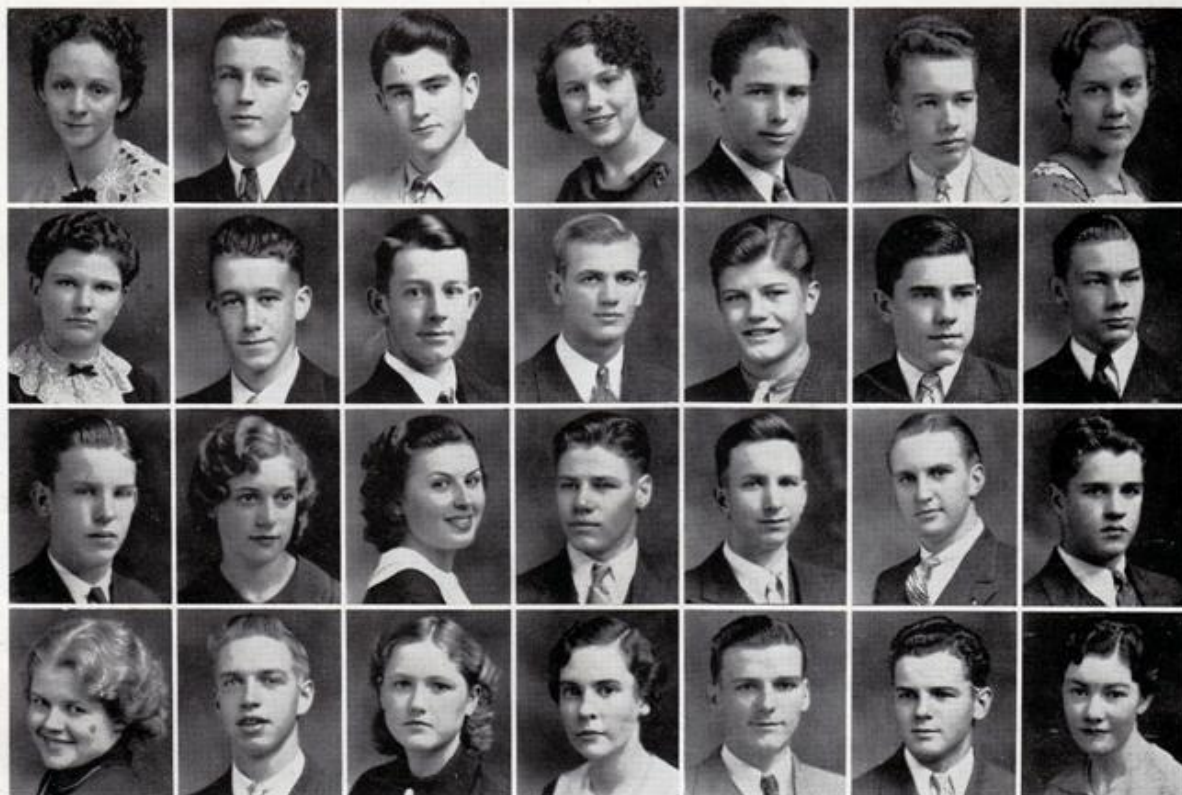
**CURTIS HEATON**

Commercial

Bumble "B" 2, 3; Basket-ball 1, 2, 3; Football 2; Glee Club 2, 3; Masque & Buskin 2, 3; Social Science Club 2, 3; Student Council 2; Bonita Club 1; Yell Leader 2, 3; Mixed Chorus 2, 3; "Let Who Will Be Clever"; "Thanksgiving in Early Boston"; "Thus Glory Passes"; "Broadcast"; Class Basket-ball 1, 2, 3; Class Swimming 1, 2, 3; "Hollywood Bound."

If you 'air a gentleman, and I suppose you 'air,  
You wouldn't go out without curling your hair.





## SENIOR NURSERY RHYMES

**HELEN HEDRICK** *Helen Hedrick* Commercial  
B. H. S. Players 2, 3; Commercial Club 3.

She has sparkling eyes and a winning smile,  
For every boy within a mile.

**CHARLES HENDRICKS** Social Science  
Football 3; Basket-ball 3; Social Science Club 3.

Charley, Charley, puddin' and pie,  
Kissed the girls and made them cry.

**GAVIN HOLLOMAN** Scientific  
Glee Club 3; Orchestra 1, 2, 3; Band 1, 2, 3; Hi-Y 3;  
Social Science Club 3; Class Basket-ball 3; Class  
Hockey 2; "Hollywood Bound."

"Pray, Mr. Holloman, will you play us a song?  
But let it be something that's not very long."

**LARLENE HOLMBERG** Social Science  
Glee Club 1, 2; Band 2.

Larlene's a shy lass, knees a-quaking,  
But she's a chemist in the making.

**WAYNE HOLMBERG** Social Science  
Vice-President 2; Glee Club 1, 2, 3; Orchestra 1, 2;  
Declamatory 2.

His chemistry's not so good, I fear,  
But his singing's known both far and near.

**BYRON HOLST** *Byron Holst* Scientific  
Debate 3.

The cock crows in the morning to tell us when to  
rise;  
But Byron crows from morn till night to tell us he  
is wise.

**GEORGINE HULL** Social Science  
In art she is sure to be a success,  
So let's wish her luck and happiness.

**FRANCES HURST** *Frances Hurst* Commercial  
Band 3.

If she sees a pin she'll pick it up,  
For she is sure 'twill bring good luck.

**HAROLD JOHNSON** *Harold Johnson* Arts and Crafts  
Football 2.

Slightly smug and dark and tall,  
He has no enemies at all.

**MAURICE JOHNSON** Scientific  
Science Club 2; Social Science Club 3.

"Book larnin' doesn't take much brains,  
But it isn't really worth the pains."

**MELVIN JOHNSON**

Social Science

There was a young blond, so very tall,  
Who looked so neat, and liked baseball.

**RICHARD JOHNSON**

Scientific

Glee Club 1.

Slow down, my boy, never drive fast,  
Ride very slowly and daylight will last.

**DONALD JONES**

Commercial

The cause of many a hair to turn gray,  
This is no secret, repeat it you may.

**MARVIN KENDALL**

Scientific

Football 2, 3.

'Twas the old, old story oft repeated,  
His aspirations ne'er defeated.

**HARRY KILGORE**

Scientific

To bed, to bed,  
My sleepy head!

**LUELLA KIRKENDALL**

Commercial

A smiling nod, a cheery hello,  
Is the way she'll greet you, wherever you go.

**REBECCA KNEZEVICH**

Commercial

Of all the lassies that e'er I did see,  
She's the most beautiful by far to me.

**CLARENCE LANG**

Scientific

Football 1, 2.

A tall fair boy with hair that's wavy,  
Why should he want to join the navy?

**ROBERT LARREW**

Arts and Crafts

Robert, Robert, the silent man!  
Get a word out of him if you can!

**JACK LELAND**

Commercial

Hi-Y 2, 3; Student Council 1; Pep Club.

Now that the lessons are put away,  
My heart is very light and gay.

**EUGENE LINDBLOM**

Scientific

Orchestra 1, 2, 3; Boys' Science Club 2; Band 1, 2, 3;  
Glee Club 3; "Hollywood Bound."

Eugene with his horn makes such a noise,  
That it pleases both the girls and boys.

**MARY LINDBLOM**

Scientific

Declamatory 2, 3; B. H. S. Players 3; Social Science  
Club 3; Assistant in Library 1, 2, 3.

Mary, Mary not contrary,  
You're often found in the library.

**LEHMAN LIPPERT**

Scientific

Football 2, 3; Boys' Glee Club 1; Orchestra 1; De-  
clamatory 2; Boys' Science Club 2; Social Science Club  
2, 3; B. H. S. Players 1, 2, 3, President 3; Hi-Y 3;  
"Treasure Island"; "Shepherds' Star"; "Let Who Will  
Be Clever"; "Bells of Christmas."

Simple Lehman met a blond  
Of whom they say he's very fond.

**JANET LONGNECKER**

Commercial

Commercial Club 3.

Now Janet is a little girl,  
Whose mind is always in a whirl.

**CAROL LOVE**

Commercial

Glee Club 1, 2, 3.

O, this sweet lass fulfills all our needs,  
She spends most of her time doing good deeds.

**ROBERT LUNDGREN**

Commercial

That "there's many a slip" this boy well knows,  
For he'll still be with us when this class goes.

**HOMER LYON**

Scientific

Football 2, 3; Boys' Science Club 2.

When he was a little boy he took commands from  
others,  
Now he is a senior and bosses all his brothers.

**DOLORES MAY**

Commercial

Scrollette Staff 3; Glee Club 1, 2, 3.

Many endless hours she spends  
Typing Scrollette odds and ends.





## SENIOR NURSERY RHYMES

DOROTHY McBIRNIE

Commercial

Basket-ball 2.

She sings, she sings from morn till night,  
From cares she's free; so her heart is light.

HELEN MIKESELL

Commercial

Commercial Club 3; Student Council 2.

This fair-haired girl with eyes so blue,  
Has named her fate and her fortune, too.

MARY McDERMOTT

Commercial

Commercial Club 3.

A better lass you'll never find;  
She'll always linger in one's mind.

MARGARET MILLER

Language

Student Council 1.

A friend of yours and a friend of mine,  
She seems to be happy all of the time.

JUNE McDEVITT

Commercial

Student Council 1, 3.

On Saturday night it shall be my care,  
To powder my nose and curl my hair.

ROBERT MODELAND

Commercial

Golf 2, 3; Glee Club 2.

A senior pest and a senior pal,  
You seldom see him without his gal.

BETTY McELROY

Scientific

Basket-ball 1, 2; Commercial Club 2.

A baseball fan so keen and fair,  
A Scotch lassie with fine dark hair.

GENEVIEVE MONTGOMERY

Commercial

Commercial Club 3.

Like a quiet, deep, beautiful stream,  
Dependable "Gen" is so serene.

CLIFFORD McILVAIN

Scientific

Little Cliff was a problem child;  
He hated school, and just ran wild.

NELLIE MORGAN

Commercial

Commercial Club 2, 3.

Nellie, Nellie, blithe and gay,  
A good stenographer you'll be some day.

**THOMAS MORGAN**

Commercial

Tom is always full of fun;  
For him, life's joys have just begun.

**DWIGHT MORRISON**

Scientific

Bumble "B" 1, 2, 3; Boys Glee Club 1, 2, 3; Mixed Chorus 1, 2, 3; B. H. S. Players 1, 2, 3, Vice-President 3; Boys' Science Club 2; Hi-Y 2, 3, Secretary 2; Student Council 1; Quill & Scroll 2, 3, President 2; "The Shepherds' Star"; "Treasure Island"; "The Bells of Christmas"; "Hollywood Bound."

There was a man in our town;  
And he was wondrous wise.

**PAULINE MUELLER**

Commercial

Bumble "B" 2, 3; Girls' Glee Club 1, 2, 3; B. H. S. Players 3; Social Science Club 3; Commercial Club 1, 2, 3, Vice-President 3; Quill & Scroll 3; Pep Club 3; Student Council 3.

A finer maid we'll never see,  
Nor one so busy with the Bumble "B."

**DOROTHY MYERS**

Scientific

The senior who moved to the sunny west,  
And our wishes for her are none but the best.

**DONALD NELSON**

Arts and Crafts

Couldn't think of praise of sufficient amount  
For a gentleman of such good account.

**HAROLD NICHOLSON**

Scientific

Hi-Y 2.

Ride away, ride away, Harold shall ride;  
But he'll have a maid tied right by his side.

**EVELYN NORDSTROM**

Commercial

Glee Club 1, 2, 3; Social Science Club 2, 3; Commercial Club 2, 3; Student Council 3.

A very saucy little lass  
Is this little maid of the senior class.

**FRANCES O'CONNELL**

Commercial

Bumble "B" 1, 2, 3; Glee Club 1, 2, 3; B. H. S. Players 1, 2, 3, Secretary 3; Social Science Club 2, 3; Commercial Club 1, 2, 3; Student Council 3, Vice-President 3; Quill & Scroll 2, 3; Yell Leader 2, 3; "Life of Stephen Foster"; "Shepherds' Star."

With steps most majestic this lass did advance,  
And she promised the gazers a ballet to dance.

**MILDRED OLANDER**

Commercial

Bumble "B" 2, 3; Glee Club 2, 3; Social Science Club 2, 3; Commercial Club 2, 3.

Mildred Olander, the beautiful blond,  
Has a pet dog of which she is fond.

**JEANNE PATTERSON**

Commercial

Orchestra 1, 2; Declamatory 3; Commercial Club.

A gay little senior, always on the run,  
She's usually at the bottom of all of the fun.

**JOAN PEARSON**

Commercial

This bright young lady travels many a mile  
To greet her teachers with a sunny smile.

**ADA PETERS**

Commercial

Glee Club 1, 2, 3.

Quiet, reserved and not too gay,  
But she has been known men's hearts to slay.

**MARCIA PETERSON**

Scientific

Bumble "B" 2, 3; Glee Club 1, 2, 3; Masque & Buskin 1, 2, 3, President 3; "Hiawatha"; "New Fires"; Quill & Scroll 2, 3; Social Science Club 3.

Marcia, Marcia, quite contrary,  
How does your wardrobe grow?

**ANNABEL PEPPER**

Language

Bumble "B" 2, 3; Social Science Club 3; Student Council 3; Quill & Scroll 3.

Although she has many duties to do,  
She really enjoys them until she is through.

**GROVER PHIPPS**

Agriculture

Declamatory 2, 3.

A witty, wise, provoking lad,  
He's never real good and never real bad.

**MILDRED PHIPPS**

Commercial

Declamatory 2, 3; B. H. S. Players 3; Commercial Club 2, 3.

Mildred, of Fraser, and Joselyn, too,  
Were always together their school year through.

**EDGAR PIERCE**

Commercial

A little man is Edgar Pierce,  
But with the girls he's pretty fierce.

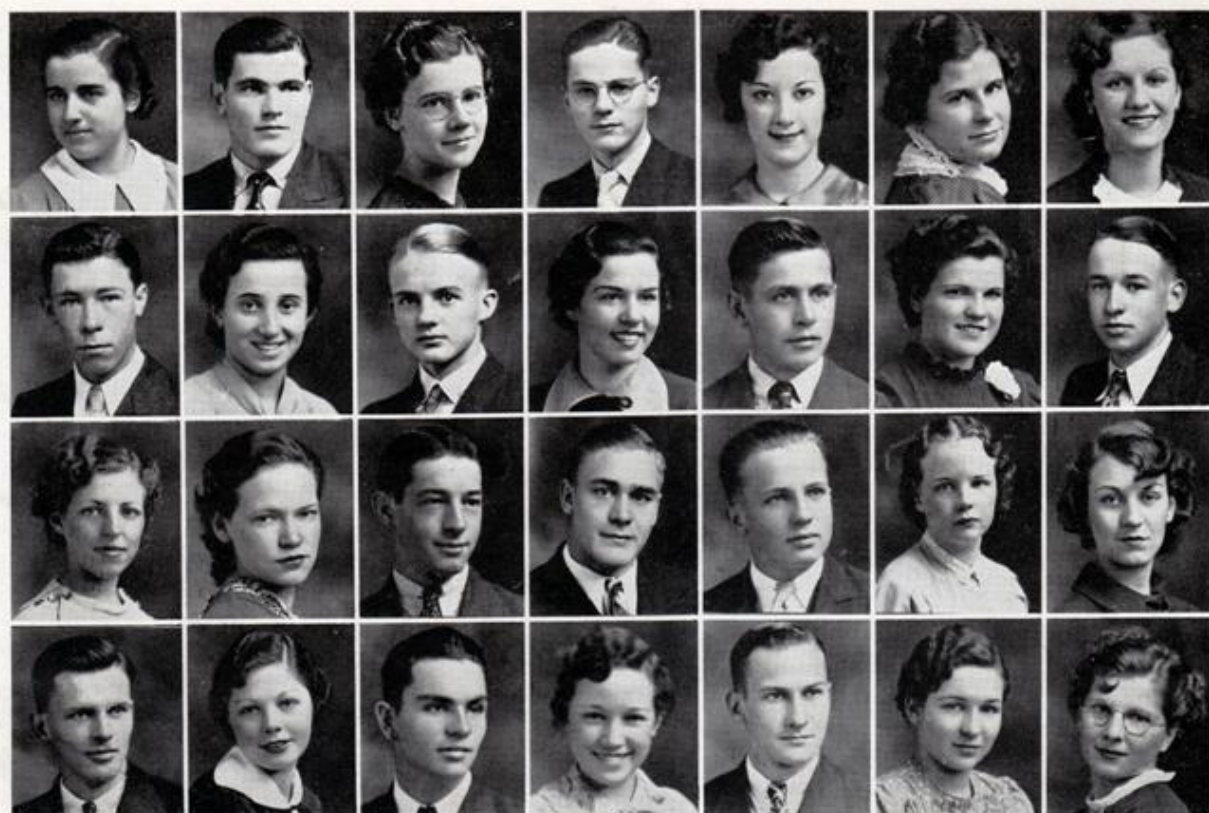
**IRENE POHL**

Commercial

Social Science Club 3; Commercial Club 3; Student Council 2.

There is no logic equal to mine  
That "It's better to study than to whine."





## SENIOR NURSERY RHYMES

### ANGELINE POULOS

Commercial

Quill & Scroll 3; Commercial Club 3, Secretary 3; Bumble "B" 1, 2, 3; Student Council 2.

Character, brains, and personality, too—  
Among her fine traits these are but a few.

### ROBERT PRITCHARD

Commercial

Football 1, 2, 3; Class Basket-ball 1; Class Swimming 1; Track 2; Glee Club 3; Social Science Club 3; Student Council 2, 3.

Although he can't fiddle as did Nero,  
You'll have to admit he's a football hero.

### BETTY RASMUS

Commercial

Glee Club 1, 2, 3; Social Science 3; Commercial Club 2, 3; Student Council 2.

Yankee doodle, doodle doo, yankee doodle dandy,  
Here, my laddles, is a lass, sweet as sugar candy.

### EDGAR REED

Scientific

Student Council 2.

Is there no lassie who is so smart  
As to rid this laddie of a lonely heart?

### JUANITA RICHMOND Language, Commercial

Scrollette 2, 3; Basket-ball 1, 2; Declamatory 2, 3; Masque & Buskin 3; Social Science Club 3; Commercial Club 2, 3; Student Council 2, 3; Quill & Scroll 2, 3; Pep Club; "New Fires."

The queen of hearts,  
She makes her marks.

### BETTY RITTENHOUR

Social Science

Bumble "B" 2, 3; Declamatory 1, 2, 3; Masque & Buskin 1, 2, 3; Social Science Club 3; Quill & Scroll 3.

In journalism, she doth shine;  
I'll let you add this other line.

### DOROTHY ROBERTSON

Language

Glee Club 1, 2, 3; Orchestra 1, 2, 3; Declamatory 1, 2, 3; Masque & Buskin 1, 2, 3; Commercial Club 1, 2, 3; Student Council 1, 2; Accompanist, Mixed Chorus 3; Accompanist, Boys' Glee Club 1, 2; Pep Club; Scrollette Staff 3; "Wiensers on Wednesday"; "Hot Copy"; "Hollywood Bound."

For Dorothy life is just a "drammer,"  
We hope she'll never start to stammer.

### HAROLD SAMUELSON

Scientific

I had two girls the other day,  
But now they've gone and run away.

### ARLENE SANDERS

Commercial

She'll flit through life gaily without a doubt,  
Though she doesn't know what it's all about.

### JUNIOR SAVEREID

Scientific

Bumble "B" 1, 2, 3; Tennis 2; Debate 1, 2, 3; Declamatory 1; B. H. S. Players 1, 2, 3; Boys' Science Club 2; Hi-Y 2, 3; President 2, Vice-President 3; Student Council 2, 3; Quill & Scroll 2, 3; "Shepherds' Star."

This boy called "Cephus" by his friends;  
Debates, debates, and never ends.

**ELIZABETH SAYRE** Commercial

Glee Club 1, 2, 3; Social Science Club 3; Commercial Club 2, 3.

We like little "Lizzy," her heart is so warm,  
She has lots of "it" and plenty of charm.

**LA VERNE SCHAFFNER** Commercial

Swimming Squad 1, 2, 3, Captain 1; Bonita Club 1.

Chasin' round with Harold talkin', gener'ly,  
Jolly, lively, orn'ry as anyone you'll see.

**BETTY SCHROEDER** Social Science

Basket-ball 1, 2; Volley Ball 1, 2; Glee Club 1, 3;  
Social Science Club 2, 3; Bonita Club 3.

Betty is so blithe and gay  
That she will laugh her life away.

**WALTER SCHROEDER** Scientific

Boys' Science Club 2; HI-Y 2, 3.

Whither, oh whither, oh whither so high,  
Do Walter's airplanes sail in the sky?

**IONE SCHULTZ** Commercial

Commercial Club 3, Treasurer 3; Scrollette 3; Pep Club.

There's need for self improvement in most every-  
one 'tis true,  
But I believe she needs it less than other people do.

**GRACE SELLERS** Commercial

In a cottage all her life  
We'll see this lass as someone's wife.

**HARLAN SHAEFFER** Arts and Crafts

See, see, what do I see?  
A grown up man where a lad used to be.

**TOM SMITH** Scientific

Class President 2; Football 1, 2, 3; Golf 1, 2, 3; Bas-  
ket-ball 1; Wrestling 1, 2; B. H. S. Players 1, 2, 3;  
Boys' Science Club 2; Social Science Club 2, 3; Student  
Council 1, 2.

Tom, Tom, the florist's son,  
Grabs the ball and away he runs.

**GUY SNYDER** Social Science

HI-Y 3.

I have heard the teachers say  
That he is very fond of play.

**WANDA SORENSEN** Commercial

Social Science Club 3; Commercial Club 3.

The littlest girl you ever did see,  
Who goes through life on joy and glee.

**MAXINE STEPHENS** Language

Class Officer 2; Bumble "B" 1; Masque & Buskin 1, 2,  
3, Secretary 2; Student Council 1; Quill & Scroll 2, 3,  
President 3; Scrollette Staff 2, 3; Pep Club; "Hia-  
watha"; "Life of Stephen Foster"; "New Fires"; So-  
cial Science Club 3.

Pretty and wise and very sweet,  
The "Scrollette" editor you should meet.

**JACK STEWARD** Scientific

Football 1, 2, 3; HI-Y 2.

Long legs and pretty ties,  
He's very friendly and also wise.

**GRACE STOTTS** Arts and Crafts

Here is a lady, a lady so gay,  
That with all her friends she has a way.

**REIMANN STROBLE** Scientific

Football 2, 3.

This handsome lad with the coal black hair,  
Goes through life without a care.

**MARY STUMP** Commercial

Class Officer 3; Bumble "B" 2, 3; Glee Club 1, 2, 3;  
B. H. S. Players 1, 2, 3; Social Science Club 3; Com-  
mercial Club 2, 3, President 3; Student Council 1, 2;  
Quill & Scroll 3; Pep Club; "New Fires"; "Mushrooms  
Coming Up."

Her tongue never ceasing,  
She's pretty and pleasing.

**JOHN STURTZ** Commercial

A farmer born, a handsome man,  
The girls admire his cheeks of tan.

**MARY STURTZ** Commercial

B. H. S. Players 1, 2, 3; Social Science Club 3; Com-  
mercial Club 2, 3.

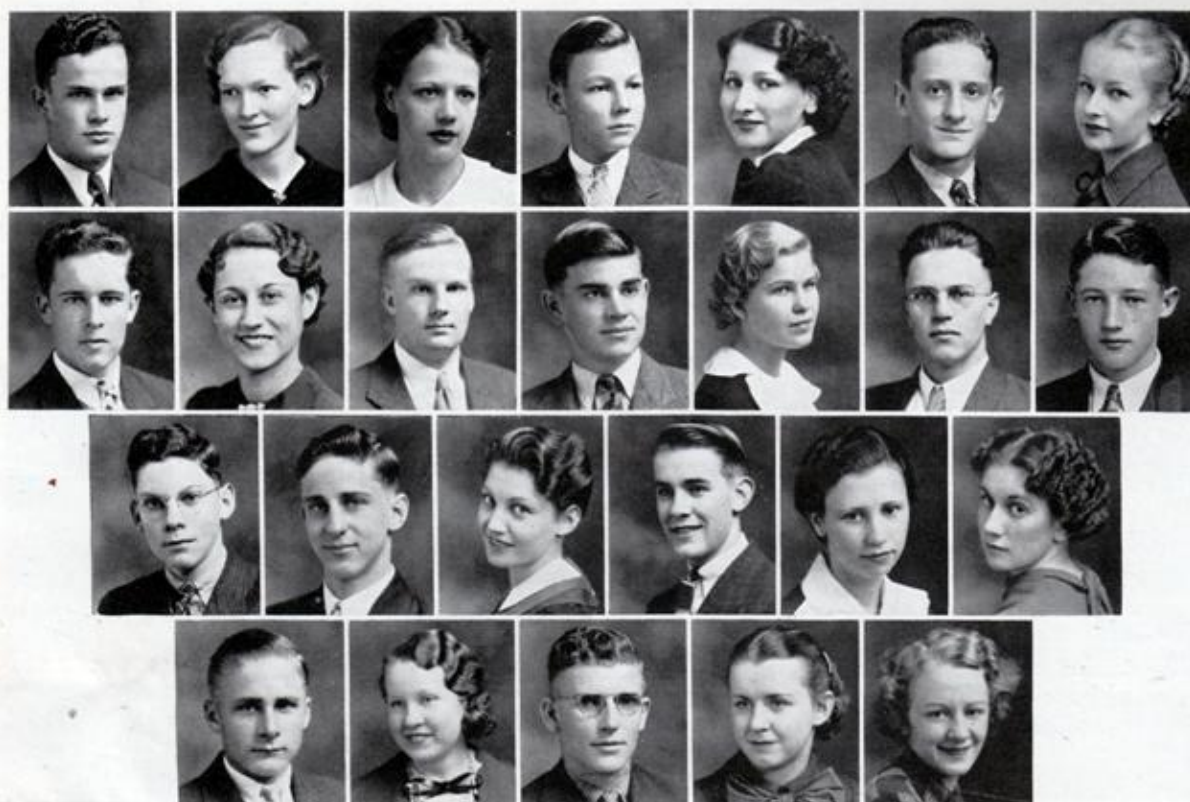
Little girl with eyes of blue,  
You are good, and kind, and true.

**MILDRED STURTZ** Commercial

Social Science Club 3; Commercial Club 2, 3.

Her many smiles we all admire,  
To do great things is her desire.





## SENIOR NURSERY RHYMES

### TERENCE SUMMERS

#### Scientific

Class Officer 2; Football 1, 2, 3; Track 2, 3; Wrestling 1, 2; Orchestra 1; Boys' Science Club 2; Social Science Club 3; Student Council 1, 2.

There was a little boy, who had a little curl,  
Right in the middle of his forehead.

### JEAN TEMPLE

#### Language

Class Officer 1; Scrollette Staff 3; Social Science Club 3.

Serene and brilliant, brilliant and serene,  
I think you'll agree that this describes Jean.

### MARIE THEDE

#### Commercial

Commercial Club 3; Student Council 3.

This serious girl can type like a flash,  
Before her nimble fingers all records go smash.

### PAUL THORNGREN

#### Scientific

Bumble "B" 2, 3; Boys Glee Club 1, 2, 3; Mixed Chorus 1, 2, 3; Orchestra 2; Debate 1, 2, 3; Declamatory 2; B. H. S. Players 1, 2, 3; Boys' Science Club 2; Hi-Y 2, 3; Social Science Club 3; Band 1, 2, 3; Student Council 2; Quill & Scroll 2, 3; "Shepherds' Star"; "Hollywood Bound."

Paul, Paul the teacher's son,  
Many debates this boy has won.

### COLLEEN TRITES

#### Commercial

Social Science Club 3; Commercial Club 3.

There is a little maiden who never has the blues,  
As long as she can gad about and carry all the news.

### WILLIAM UPDEGRAFF

#### Scientific

Class Officer 1, 2; Orchestra 2, 3; Debate 1, 3; Band 1, 2, 3; Bumble "B" 1.

A golfer, debater, and drummer, too,  
There's nothing much this lad can't do.

### VIRGINIA VAIL

#### Commercial

Bumble "B" 1, 2, 3; Glee Club 1, 2, 3; Masque & Buskin 1, 2, 3; Secretary 2; Social Science Club 2, 3; Commercial Club 2, 3; Quill & Scroll 2, 3; Student Council 1, 2; "New Fires"; "Hiawatha"; "Three Radio Plays"; "Hollywood Bound."

I'll dress you like a goldfinch or any peacock gay,  
So, dearest Gin, if you'll be mine, let us pick out the day.

### CLIFFORD VAN METER

#### Arts and Crafts

Class Officer 2; Football 1, 2, 3; Student Council 2; Hi-Y 2; Class Basket-ball 1, 2, 3; Wrestling 1.

Clifford is an Eagle Scout,  
Who's always helping people out.

**GERALDINE VOGLER**

Commercial

Glee Club 1, 2.

Where she is going she couldn't say,  
All she knows is she's on her way.

**JAMES WALLACE**

Scientific

Scrollette 3; Football 2, 3; Boys' Science Club 2.

Where would one go in order to find,  
A gentleman with such a good mind?

**ALEXANDER WASHINGTON**

Scientific

Basket-ball 1, 2, 3; B. H. S. Players 1, 2; Student Council 2.

He's so very thin and tall,  
And awfully keen at basket-ball.

**ZEREDA WEBER**

Social Science

Glee Club 1; Social Science Club 2, 3; Commercial Club 2, 3.

Seldom is there found a trace  
Of sadness on this pretty face.

**JAMES WHITE**

Arts and Crafts

Football 1, 2.

He has a little wife, the nicest he has seen,  
She washes all the pans and keeps his small house clean.

**CLEO WILLIAMS**

Scientific

Class Basket-ball 1, 2, 3; Wrestling 1.

A very bashful beau,  
He'd like the girls to know.

**HAROLD WILLIS**

Scientific

A talkative, mischievous boy;  
It seems to please him to annoy.

**DEAN WILSON**

Scientific

Glee Club 2, 3; B. H. S. Players 2, 3; Boys' Science Club 2; Hi-Y 2, 3; "Life of Stephen Foster"; "Deferential Kindness."

Tall, blue-eyed, lanky and lean,  
A wonderful chemistry shark is Dean.

**GENEVIEVE WILSON**

Commercial

Bumble "B" 2, 3; Masque &amp; Buskin 3; Social Science Club 3; Commercial Club 2, 3; Student Council 3; Quill &amp; Scroll 2, 3.

There was a little lady who lived on a farm,  
She was noted most for her beauty and charm.

**JAMES WILSON**

Scientific

Golf 2, 3; Glee Club 1, 2, 3; Debate 1; Masque &amp; Buskin 1, 2, 3, Vice-President 2; Boys Science Club 1, 2; Social Science Club 2, 3, President 2; Student Council 3; "Wieners on Wednesday"; "Let Who Will Be Clever"; "Life of Stephen Foster"; "Thanksgiving in Early Boston"; "Shepherds' Star"; "Thus Glory Passes"; "Drums of Death"; "New Fires"; Yell Leader 1, 2; Class Basket-ball 2, 3; Mixed Chorus 2, 3; "Hollywood Bound."

A boy he would a wooing go,  
Whether his mother would let him or no.

**LOIS WILSON**

Commercial

Bumble "B" 2, 3; Glee Club 1, 2, 3; B. H. S. Players 2, 3, Vice-President 2; Social Science Club 2, 3; Commercial Club 2, 3, President 3; "New Fires"; "Mushrooms Coming Up."

This girl, with her pretty, big brown eyes,  
Besides being cute is very wise.

**JUNE WITT**

Commercial

Bumble "B" 1, 2, 3; Glee Club 1, 2, 3; Social Science Club 2, 3, Treasurer 3; Commercial Club 1, 2, 3.

She always thinks of something new,  
So we hardly know what next she'll do.

**DAHRL WRIGHT**

Arts and Crafts

Class Officer 1, 2; Football 2, 3; Basket-ball Manager; Glee Club 1; Hi-Y 2, 3; Student Council 2; Class Basket-ball 1, 2, 3; Track Manager 2; Swimming 1, 2.

Dahrl Wright, he is so small,  
A rat could eat him, hat and all.

**LA VONNE YOUNG**

Commercial

This country lass with dark brown hair,  
Is joyous and without a care.

**BERTRAM ZANDERHOLM**

Commercial

Student Council 2.

He must work and he must read;  
Then he will be a man indeed.

**INA MAE ZIMBELMAN**

Language

Scrollette 3; Girls' Glee Club 1, 2, 3; Orchestra 1, 2, 3; Student Director 2, 3; Masque &amp; Buskin 2, 3, Vice-President 3.

No rings on her fingers, no bells on her toes,  
Yet she shall have music wherever she goes.

**BETTY ZUMWALT**

Commercial

Girls' Glee Club 1, 2, 3; Social Science Club 3; Commercial Club 2, 3.

Polly tattles, Dolly wriggles,  
But this dear maid always giggles.



## Class Will

WE, the Class of '37, being of sound mind and memory and without doubt the most illustrious class ever to graduate from dear old B. H. S., do hereby will and bequeath all our earthly goods, both real and personal as follows:

Item: To our teachers and the entire faculty who have helped us through the years we leave our undying gratitude and our courage and fighting spirit that they may deal wisely with the turbulent class of '38.

Item: To the afore-mentioned class we leave our cleverness and intelligence, as they seem sadly lacking in these requisites.

Item: Rex Grayson wishes to leave his—shall we say, self-assurance, to George Dutton, who is so becomingly modest.

Item: Mary M. Stump wishes it known that she thinks she can afford to leave at least part of her talkativeness to Jane Pestotnik, who by the way, is no clam herself.

Item: Bobby Brown has professed his willingness to give his serious-mindedness to John Shadle, who we really believe should utilize this appropriate contribution.

Item: Ina Mae Zimbelman gladly wills her musical ability to Betty Knudson, and also wishes her success in the years to come.

Item: Wilmer Grabau sadly relinquishes his secretly enjoyed worries to Junior Munson who, up until now, has been so light-hearted.

Item: Jeanne Patterson wills to the junior girls the privilege of dealing as they think best with Bob Shaw.

Item: Homer Lyon has expressed his complete willingness to leave his ability to wreck cars to Marshall Phillips, who hasn't exactly neglected that part of his education.

Item: Tom Hannum gives to Clayton "Brush" Lander his well trained hair.

Item: Pauline Mueller and Winnifred Gerrard leave their merry dispositions and a few of their surplus smiles to Gretchen Sparks.

Item: Gavin Holloman, commonly known as Brisbane, hands his literary ambitions over to Robert Whittlesey, who we think should exert a little effort along this line.

Item: Eddie Buckels hands over to Darrel "Romeo" Hansen, his quiet and gentlemanly air. (Who knows? It may do some good.)

Item: To Audree Olson, Maxine Stephens has relinquished all prior claims on Harry Jorgenson.

Item: Mike Enich leaves his brawn and muscle to Lowell Young, the Ovaltine boy.

Item: Smoky Brogden, feeling that he can spare a little of his height, has kindly agreed to will Phil Ruschmeyer about six inches.

Item: June Witt decided to leave all her ex-boy-friends, who are practically as good as new, to Jean Case.

Item: Virginia Vail, Marcia Peterson, and Blanche Carver leave to Marian Allen, "Jack" Doran, and Jo Bostwick, their exclusiveness.

Item: Dorothy Robertson, after careful consideration, has consented to leave Bernice McVicker a little of her irresponsibility.

Item: Last, and not least, Junior Saveried, Frank Hagen, and Dean Wilson will their ear-splitting yells to the future yell leaders. (We think there will be plenty for each.)

This will, having been duly witnessed and sealed, we do hereby sign it this fifteenth day of May, Anno Domini, one thousand nine hundred and thirty-seven.

Class of '37

Witnesses:

I. C. You  
U. C. Me

Lawyers:

I. Ketchum  
W. E. Foolem







## Scrolllette Staff

Editor . . . . .	Maxine Stephens
Assistant Editor . . . . .	Clarence Rice
Senior Editors . . . . .	Ina Mae Zimbelman, Blanche Carver
Business Managers . . . . .	Jean Burke, Juanita Richmond
Advertising Solicitors . . . . .	Mary Jo Bostwick, Elaine Carson
Features . . . . .	Edith Gunn
Activities . . . . .	Mildred Fetzer, Jean Temple
Athletics . . . . .	James Wallace
Calendar . . . . .	Dorothy Robertson
Humor . . . . .	Tom Hannum
Kodakster . . . . .	Don Fronsdaahl
Typists . . . . .	Ione Schultz, Dolores May
Advisers . . . . .	Zoe Stevens, Doris Shaler, William Hartley



## Bumble "B" Staff

News Editors . . . Pauline Mueller, Virginia Vail, Angeline Poulos, Marcia Peterson  
 Feature Editor . . . . . Annabel Pepper  
 Feature Writers . . . Junior Savereid, Mary Stump, Helen Palmer, Dwight Morrison  
 Advertising Manager . . . . . Genevieve Wilson  
 Assistant Advertising Manager . . . . . Betty Rittenhour  
 Advertising Solicitors . . . Paul Thorngren, Eleanor Sparks, Betty Jean Nelson,  
 Kathryn Anderson, Mildred Olander, Mary Burke, Elizabeth Handschin, Nadine  
 Amandus, Ellen Thompson, Margaret Ann Peters, Mary Lee Rosengreen, Jean  
 Meyers, Joe Wells.  
 Circulation Manager . . . . . Frances O'Connell  
 Collectors . . . Clark Nelson, Robert Whittlesey, Frank Linderblood, Harry Jorgenson  
 Sports Editor . . . . . Norman Erbe  
 Copy Editors . . . Angeline Poulos, Marcia Peterson, Virginia Vail, Pauline  
 Mueller, Betty Likely  
 Reporters . . . June Witt, Marjory Carlson, Emma Holmes, Mary Ann Zeigler,  
 Glee Barth, Jane Pestotnik, Naomi Wallace, Winifred Gerrard, Ruth Meyers,  
 Avis Dodge, Irene Anderson, Rachel Jean Hanson, Lois Wilson, Joe Wells,  
 Marion Allen, Curt Heaton, Norris Vail, Lucy Canakes, Jacqueline Doran, Anna  
 Johnson, DuBois Johnson, Dorothy Moore, Jerry Wells, Janice Wegele, Audree  
 Olson, Bill Brierty, Ronald Hinrichs.  
 Junior High Staff . . . Florence Walker, editor; Thelma Richards, Janet Hill,  
 Arlene Willis, Edna Martin, Ethel Likely, John Doran, Robert Erickson, David  
 Sullivan.  
 Advisers . . . . . Miss D. Hansen, Miss Schorman, K. P. Longnecker





Back Row (from left to right): Jean Burke, Annabel Pepper, Junior Savereid, Norman Erbe, Dwight Morrison, Paul Thorngren, Juanita Richmond, Betty Rittenhour.  
 Front Row (from left to right): Pauline Mueller, Mary Stump, Genevieve Wilson, Virginia Vail, Angeline Poulos, Marcia Peterson, Frances O'Connell, Edith Gunn, Maxine Stephens.

## Quill and Scroll

First Semester	Officers	Second Semester
Angeline Poulos . . . . .	President . . . . .	Maxine Stephens
Paul Thorngren . . . . .	Vice-President . . . . .	Virginia Vail
Norman Erbe . . . . .	Secretary . . . . .	Genevieve Wilson

THE Lorena Erickson Chapter of the Quill and Scroll Society has spent a profitable year learning improved methods of writing for print and also reading educational articles as well as prize-winning short stories.

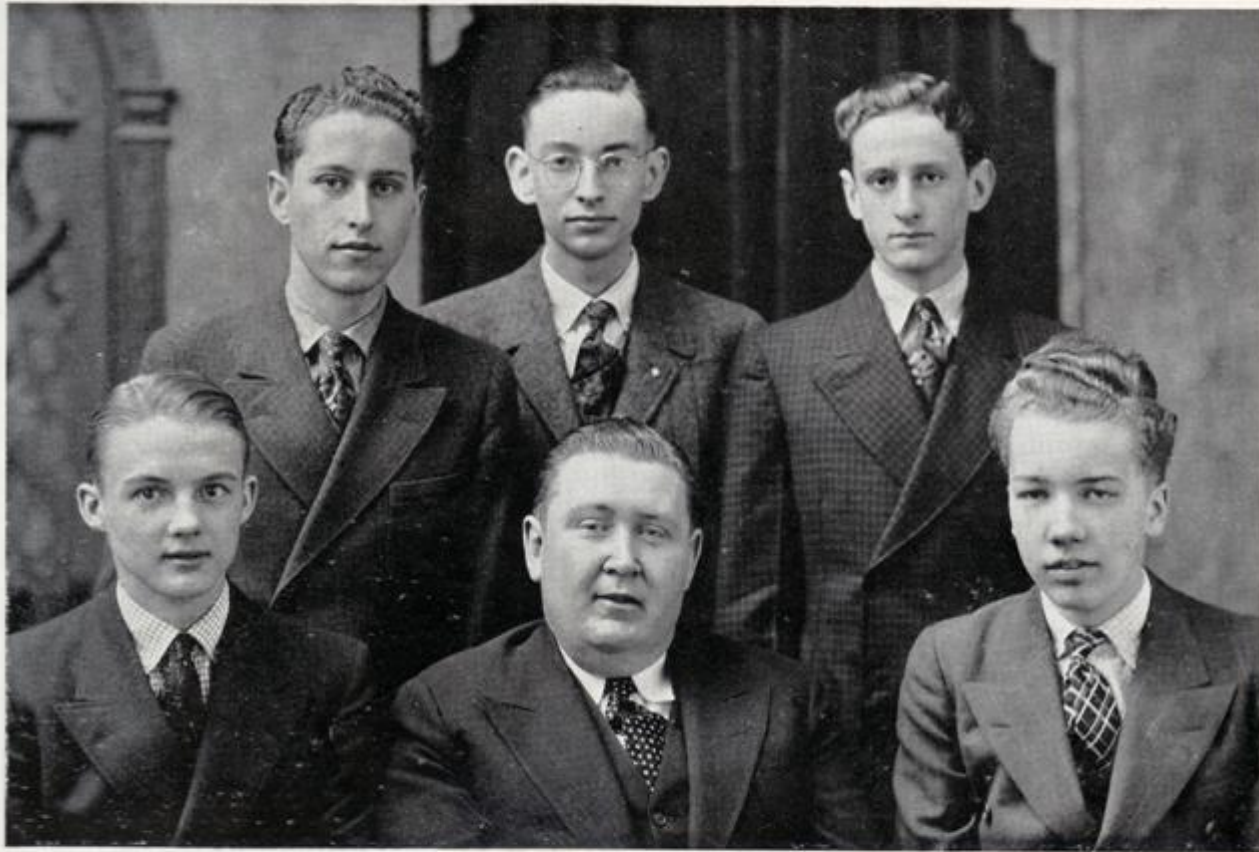
During the past year the members have enjoyed discussions with several local people who exhibit ability in some phase of newspaper work—writing features and news, selling and making-up advertisements, and printing pictures and cartoons.

The group enjoyed a trip through the local newspaper office where they saw the actual publishing of a paper, from the first copy to the finished product ready for distribution.

Membership in the Quill and Scroll, an international honorary society for high school journalists, is obtained only by students ranking scholastically in the upper third of their class and having done superior work in some phase of journalism—writing, drawing, or advertising work on either annual or school paper.

This spring the members initiated into the society at the annual banquet were: Dorothy Robertson, Mildred Fetzer, Jean Temple, Mildred Olander, June Witt, James Wallace, Emma Holmes, Helen Palmer, Eleanor Sparks, Betty Jean Nelson, Kathryn Anderson and Winnifred Gerrard.





Back Row: Frank Linderblood, Dubois Johnson, Bill Updegraff  
Front Row: Junior Savereid, Mr. Quinn, adviser, Byron Holst.

## Debate

**T**HIS year's debate team, consisting of Junior Savereid, Frank Linderblood, William Updegraff, Byron Holst, and Dubois Johnson, was extraordinarily good. Losing few debates, the boys have even defeated an Iowa State college team.

In the Connoll Debate Tourney every debate was won by Boone. Eighteen debates won, and but two lost was the excellent record made in the Southwest Tournament which was held in Boone, February 12 and 13. The negative team, Byron Holst and Junior Savereid, went through this tournament undefeated. Winning first place in the aforementioned tourney, the school debaters became eligible to enter the state contest which was held in Iowa City, April 2, 3, and 4. Although Boone won five debates and defeated the State Champions twice, they lost three debates which prevented their winning the tournament. Boone, represented by Frank Linderblood and Junior Savereid, also participated in the David I. McCahill Tournament at Drake University. Among the teams defeated by them were the Nebraska State Champions, Iowa State Champions, and Northwest Iowa Champions. Our team was finally eliminated in the semi-finals of the tourney by Omaha Tech and an Illinois team.

In addition to the debaters themselves, their competent coach, Lyle Quinn, deserves a vote of thanks for leading the team on to so many victories.





# MASQUE AND BUSKIN

## MASQUE AND BUSKIN DRAMATIC CLUB

First Semester	Officers	Second Semester
Marcia Peterson . . . . .	President . . . . .	Juanita Richmond
Ina Mae Zimbelman . . . . .	Vice-President . . . . .	Harry Jorgenson
Tom Hannum . . . . .	Secretary . . . . .	Gretchen Sparks
Miss Kathleen King . . . . .	Adviser . . . . .	Miss Kathleen King

## BOONE HIGH PLAYERS

First Semester	Officers	Second Semester
Lehman Lippert . . . . .	President . . . . .	Norman Erbe
Dwight Morrison . . . . .	Vice-President . . . . .	Junior Savereid
Frances O'Connell . . . . .	Secretary . . . . .	Tom Smith
Miss Jeanette Lloyd . . . . .	Adviser . . . . .	Miss Jeanette Lloyd

# BHSPS PLAYERS





"NEW FIRES"

## Dramatic Clubs

**A**CTUAL play production was the aim of the Masque and Buskin Dramatic Club and more time was devoted to this phase of work than any other. This "play" program began early in the year with the presentation of a one-act play, "Park Lights," and a sketch, "One Word Alone," before the high school Parent Teachers' Association. In January, the play, "Thomas Cook, Ltd." was presented at the Boone Woman's Club, and later at a joint meeting of the dramatic clubs in the auditorium. The program for the last semester included an assembly play and several "walking rehearsals," for the benefit of the club. Nearly every member of the club has participated in some phase of the work—acting, directing, or program work.

During the school year 1936-37, the sixty members of the Boone High Players Dramatic Club gave interesting and educational reports on scenery, actors, make-up, and lighting. A one-act play, "Deferential Kindness," was presented at a joint meeting of the dramatic clubs, at an evening benefit performance, and at the Spring Festival of the Woman's Club. At Christmas time the Boone High Players, assisted by the glee clubs, presented a nativity play, "Shepherds' Star," for the Parent Teachers' Association. The costume and lighting effects, including several beautiful tableaux, and also excellent solos sung by different members, made this a presentation worth remembering.

The combined dramatic clubs presented, on February 5, their annual public

[ Continued on page 34 ]





GIRLS' FIRST GLEE CLUB



GIRLS' SECOND GLEE CLUB





BOYS' GLEE CLUB

## Glee Clubs

THE Glee Clubs, under the direction of Miss Sievers and Mr. Fields, have been doing very good work this year. During the first semester the sextette appeared before many clubs and took part in various outside entertainments. The combined group presented the operetta, "Hollywood Bound," a typical modern play, on March 18.

### Cast of Characters

Windy Bryan	Clark Nelson
Mr. Norton	Robert Whittlesey
Countess de Norka	Irene Anderson
Agatha Wigglesworth	Dorothy Robertson
Eric von Whoopanholler	Orville Casebolt
Wun Hop	Bruce Corl
Hi de Ho	Edgar Updegraff
Alys Adore	Muriel Pearson
Marcia Norton	Dorothea Jipp
Tim Molloy	Robert Fields
Willie	Paul Thorngren
Bob Kent	James Wilson
Clyde Chalmers	Harry Jorgenson
Annette	Jane Mauck
Mr. Fietlebaum	Curtis Heaton
Mr. Warren	Gavin Holloman
Isaac J. Relic	Dwight Morrison
Three Mannikins	Blanche Carver, Leatrice Sturtz, Virginia Vail
Phineas Tompkins	Eugene Lindbloom
Mr. Sneezeasy	Clayton Lander
Chorus of Extra Girls, Chorus of Extra Boys, Movie Stars, Chinese Girls, Dancing Girls.	





Vonnis Anderson, Robert Allender, Lois Bennett, Wayne Browning, Eileen Cartwright, Everett Casey, Bill Chance, Arthur Clarke, Bruce Corl, Tom Dahlgren, Byron Davis, Donald DeFrance, Robert Dennert, Lois Donaldson, John Doran, Leo Elserman, Clyde Ferry, Robert Fields, Kenneth Finch, Phylliss Finley, Elon Gaston, Virgil Gaston, Charles Gibson, Maurice Good, Dorothy Hall, Marjorie Hall, Don Harker, Gavin Holloman, Mary Holmes, Harry Jorgenson, John Karns, Clayton Lander, Eugene Lindbloom, Jack McCambridge, Theaora Moss, Virginia Moss, Junior Munson, Ruth Nygren, Marion Parks, Kenneth Patterson, Robert Paulson, Jane Pestotnik, Darrell Reed, Clarence Rice, John Shadle, Bob Smith, Junior Taylor, Dolores Tigerstrom, Richard Tillson, Edgar Updegraff, Bill Updegraff, Art Crouthamel, Warren Mondt, Mark Younggren.

## Band

Mr. Fields	Director
Bruce Corl	Student Director
Marion Parks	Secretary
Clarence Rice	Librarian
Clayton Lander	Wardrobe Master

THIS year there were sixty-five students in the high school band. Forty-eight of the members constituted the marching band which, due to tireless practice at noons, was able to perform many difficult maneuvers before the football fans of last season. Bruce Corl, the head drum major, with the aid of the junior drum majors, Donald DeFrance and Donald Harker, spiritedly led this marching band at football games and also at the sub-district contest in the spring.

At the close of the football season, the group was divided into an activities band—which furnished the music for the basket-ball games—and a concert band, which worked on a more serious type of music.

The entire band participated in the County Music Festival. At the sub-district contest the band, a trombone solo by Jane Pestotnik, and the brass sextette, composed of Gavin Holloman and Marion Parks, cornets; Robert Dennert, French horn; Robert Smith and Jane Pestotnik, trombones; and Edgar Updegraff, euphonium, were rated "superior," which enabled them to enter the district contest at Nevada on April 2 and 3 where all but the band were eliminated. Because of bad weather, the marching bands did not get to compete, but it was expected that they would be permitted to enter the state contest at Iowa City, anyway. This contest was not held until after the Scrolllette went to press.



Bill Updegraff, Bruce Corl, Clayton Lander, Harry Jorgenson, Florence Walker, Edan Martin, Mr. Fields, director, Eugene Lindbloom, Robert Smith, Jane Pestotnik, Rachel Jean Hanson, Dorothy Robertson, Eleanor Sparks, Edith Gunn, Jane Mauck, Glee Barth, Donald DeFrance, Lois Donaldson, Enid Breedlove, Merlyn Williams, Robert Whittlesey, Jacqueline Doran, Betty Knudson; Virginia Steurwald, Helen Crouse, Ina Mae Zimbelman, Robert Dennert, Naomi Smith, Ruth Rasmus, Irene Anderson, Lucy Canakes, Gavin Holloman, Charlotte Burgess, Elaine Grill.

## Orchestra

Director . . . . . Mr. Fields  
 Librarian and Concert Mistress . . . . . Enid Breedlove

UNDER the direction of Mr. Fields, the 1936-37 orchestra has improved greatly. Because of constant practice, the orchestra has been able to give us some very fine music at our various entertainments and also to make a good showing at the County Music Festival.

At the district contest at Nevada, the orchestra playing "Der Freischutz" by Carl Von Weber, and Jane Mauck, contralto soloist singing "Die Mainacht" by Brahms and "The Fisher's Widow" by Edwards, won superior ratings. Enid Breedlove, violin soloist; Betty Knudson, viola soloist; and the string quartet, composed of Eleanor Sparks and Enid Breedlove, violins; Betty Knudson, viola; and Robert Whittlesey, cello, were rated "excellent." Since the state music contest was not held until May 6, 7, and 8, the final rating of Jane Mauck and the Boone High Orchestra was not determined when the annual went to press.





## Commercial Club

First Semester	Officers	Second Semester
Lois Wilson . . . . .	President . . . . .	Mary Stump
Orville Casebolt . . . . .	Vice-President . . . . .	Pauline Mueller
Angeline Poulos . . . . .	Secretary . . . . .	Jeanne Patterson
Richard Hardie . . . . .	Treasurer . . . . .	Ione Schultz
Miss Weber . . . . .	Advisers . . . . .	Miss Crawford

TO prepare the student to take his place in the business world of today was the aim of the Commercial Club this year. Much of the time during the first semester was spent in interviewing the business and professional men of the city as to what they considered most important in the training of a stenographer. Reports of these interviews were given to the club at its regular meetings.

The programs were planned and presented by the members themselves, as the club tried to eliminate as much outside help as possible in order that more students would take part.

During the second semester the students won many awards in typing contests sponsored by "Gregg Writers," a magazine purchased by the Commercial Club.

Honor was brought to the commercial department by various students who entered a nation-wide contest in letter writing. Frances O'Connell won five dollars and first place; Evelyn Nordstrom won one dollar and fifth place; while Lois Wilson, Genevieve Montgomery, Mildred Olander, Betty Rasmus, Angeline Poulos, Marie Thede, and Richard Hardie received honorable mention.