



*The*  
**SCROLLETTE**

1934

Mary Bagden  
"34"

---

MARGARET CORDTS

*Editor-in-Chief*

GERALDINE ZAHN

*Senior Editor*

KENNETH BURNS

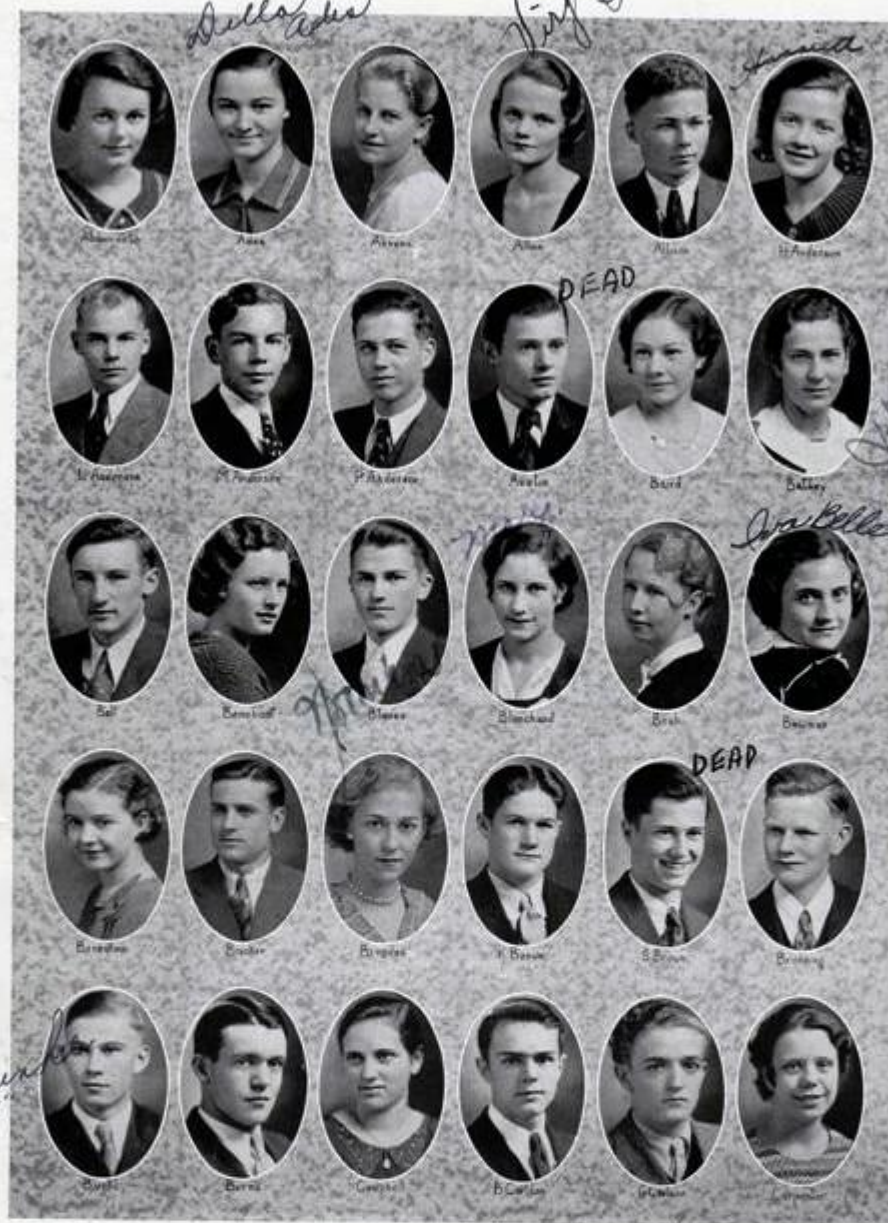
MAXYNE PESTOTNIK

*Business Managers*

---

Davis Shaler

The Senior  
Class  
1934



EMMA ABBENSETH *Commercial*  
Social Science Club 2, 3; Commercial Club 2, 3;  
THE SCROLLETTE 3.  
*A good temper is like a spring day,  
It sheds its brightness along the way.*

DELLA ADES *Commercial*  
*We can always count on Della;  
She's that kind of a girl.*

DELILA AHRENS *Commercial*  
*True friends are like diamonds—precious but  
rare.*

VIRGINIA ALLEN *Commercial*  
Class Secretary 1, 2; Glee Club 1, 2, 3; Declamatory  
1; Masque and Buskin 1; Phi Chi A 3; Commercial  
Club 1, 2, 3; Student Council 1, 2; Social Science  
Club 2, 3.  
*A charming girl, a charming voice.*

**The  
Scrollette  
1934**

**CHARLES ALLISON** *Scientific*  
Glee Club 1; Science Club 3.  
*He makes his own way by doing tasks well.*

**HARRIET ANDERSON** *Commercial*  
*Reddish hair, and a carefree air.*

**LEROY ANDERSON** *Commercial*  
Band 1, 2, 3.  
*When he speaks the lassies stop to listen.*

**MARTIN ANDERSON** *Commercial*  
Hi-Y 3; Commercial Club 3.  
*I like being with myself,  
For then I know I'm in good company.*

**PAUL ANDERSON** *Scientific*  
Glee Club 2; Science Club 2; Hi-Y 3; Student Council 3.  
*Jaunty impertinence.*

**WILLIAM AUSTIN** *Social Science*  
Football 1, 2, 3; Basket-ball 2; Swimming 1; Science Club 1.  
*"Variety is the spice of life."*

**MAXINE BAIRD** *Arts and Crafts*  
Declamatory 2; Masque and Buskin 2, 3; Social Science Club 2, 3.  
*Diamonds in her eyes, star dust 'neath her feet.*

**JEAN BATTEY** *Language*  
Glee Club 1, 2, 3; Declamatory 2, 3; B. H. S. Players 1, 2, 3; Phi Chi A, President 3; Bonita Club 1, 2, 3; "Elmer."  
*A smile that is worth a million dollars.*

**ARNOLD BELL** *Scientific*  
Glee Club 1; Orchestra 1, 2, 3; Masque and Buskin 3; Hi-Y 2, 3; Band 1, 2, 3; Student Council 1, 2.  
*A promising lad of fine purpose and ability.*

**VIOLET BENSHOOF** *Commercial*  
Volley-ball 2.  
*Whatever she does she does well.*

**NORMAN BLAESS** *Commercial*  
Class Basket-ball 3; Glee Club 1, 2, 3; B. H. S. Players 2, 3; "As You Take It"; Hi-Y Secretary 3; Social Science Club 2, 3; Commercial Club 3; Student Council 1, 2.  
*He has a head to contrive, a tone to persuade,  
and a hand to execute any mischief.*

**MARGARET BLANCHARD** *Arts and Crafts*  
Volley-ball 3; Swimming 1, 2, 3; Glee Club 1, 2, 3; Sacred Concert 2, 3; Mixed Chorus 1, 2, 3; B. H. S. Players 2, 3, President 3; Social Science Club 3; Student Council 1, 2, 3; Bonita Club 2, 3; Yell Leader 3.  
*A charming little maiden;  
With talent she is laden.*

**DOROTHY BOAK** *Commercial*  
Glee Club 2, 3; Social Science Club 3.  
*A girl with quaint and quiet ways.*

**IVA BELLE BOWMAN** *Commercial*  
Glee Club 1, 2; Social Science Club 3.  
*She accepts tasks given her, and never shirks.*

**EILA LEE BREEDLOVE** *Language*  
Bumble "B" 1, 2, 3; Glee Club 2, 3; Phi Chi A 3; Social Science Club 3.  
*Short in stature, but long in charm.*

**KENNETH BRICKER** *Commercial*  
Swimming 1; Track 1; Football 1, 2, 3; Glee Club 1; Masque and Buskin 1, 2, 3; Hi-Y 3; Commercial Club 2; Student Council 1, 2; Bonita Club 1.  
*He is never serious very long.*

**MARY BROGDEN** *Commercial*  
Volley-ball 2; Declamatory 3; Masque and Buskin 3; Commercial Club 2, 3.  
*A manner plain, unaffected, and sincere.*

**KENNETH BROWN** *Scientific*  
Class Basket-ball 1, 2; Swimming 2; Glee Club 1, 2; Hi-Y 2, 3.  
*Wit is the salt of his conversation.*

**SHERRILL BROWN** *Scientific*  
Bumble "B" 1, 2, 3; Basket-ball 1, 2; B. H. S. Players 2, 3; Science Club 2, 3; Hi-Y 2, 3; Social Science Club 3; Quill and Scroll 2, 3; "The New Co-Ed"; "Tea Toper Tavern"; Student Council 3.  
*A master mind in the making,  
An intellect of the fourth estate.*

**PAUL BRUNNING** *Scientific*  
Boys' Science Club 2, 3; Hi-Y 3.  
*A jester he, a jolly jester, too.*

**WILLIAM BURKE** *Scientific*  
Football 1; Swimming 1; Science Club 1.  
*Scamp! Better to be a scapegrace than a fade-out.*

**KENNETH BURNS** *Scientific*  
Class President 2; Football 1, 2, 3; Class Basket-ball 1; Glee Club 1, 2; Masque and Buskin 2, 3; Science Club 2, 3; "An Amateur Hamlet"; "Tea Toper Tavern"; Hi-Y 2, 3; Social Science Club 3; Student Council 1, 2; THE SCROLLETTE 2, 3.  
*Reserved and sincere, he has all the qualities of a gentleman.*

**LUCILLE CAMPBELL** *Social Science*  
*A ready helper with a winning smile.*

**BYRON CARLSON** *Scientific*  
Class Basket-ball 1, 2; Glee Club 1, 2, 3; Orchestra 1, 2, 3, Student Director 3; Science Club 1, 2; Band 1, 2, 3, Student Director 2; Student Council 1, 3.  
*He has music in his fingers.*

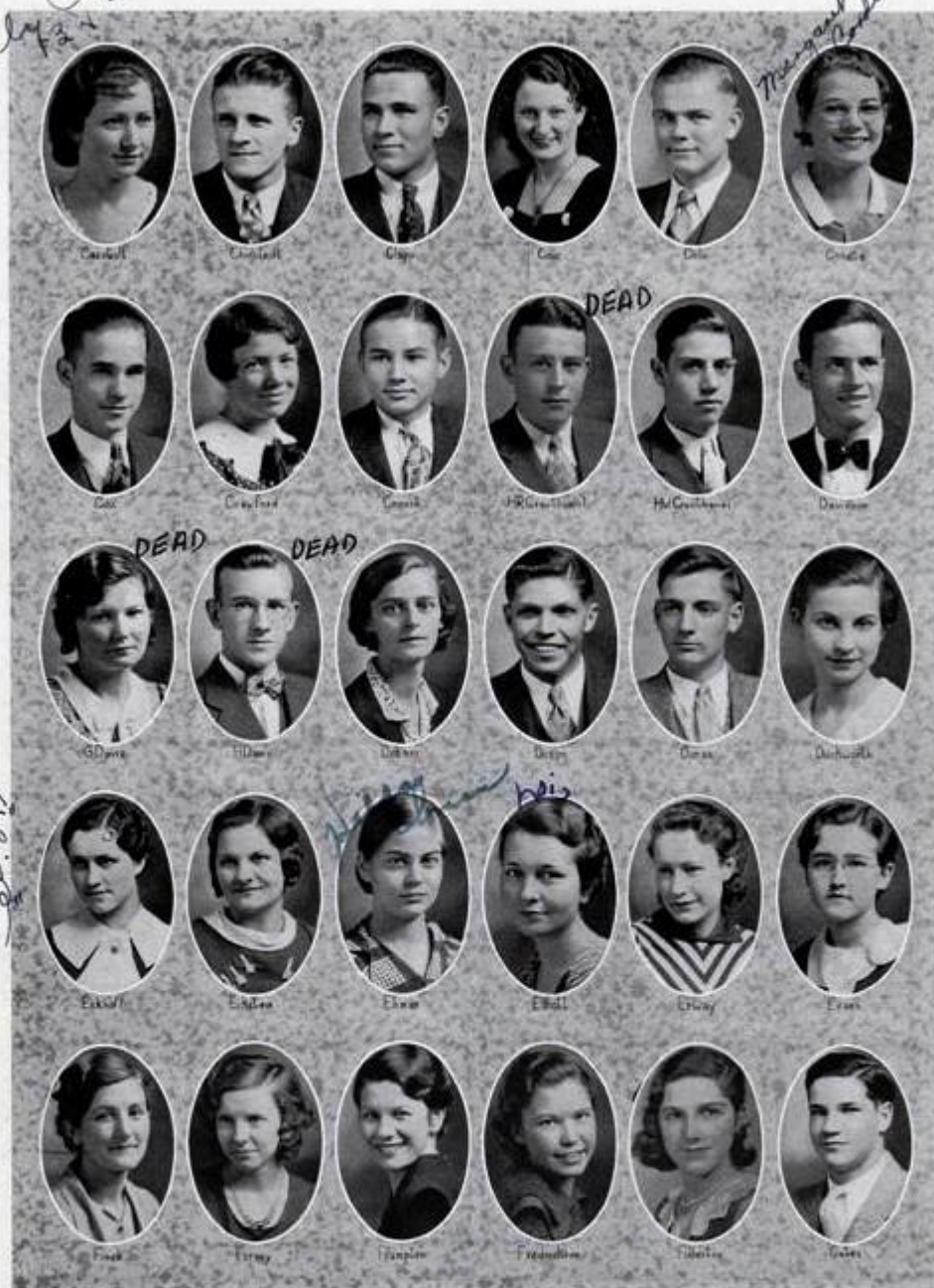
**GUSTAF CARLSON ('35)** *Social Science*  
*A quiet boy with a penchant for drawing.*

**LEONA MAY CARPENTER** *Commercial*  
Glee Club 1.  
*Quiet, until you know her.*

The Senior  
Class  
1934

*Casebolt*  
*Casebolt*

*Margaret Smith*



FREDA CASEBOLT

*Commercial*

Social Science Club 3; Student Council 1.  
*Ever fair and never proud.*

BYRON CLAPP

*Language*

*The Bumble "B"*; Football 1, 2, 3; Class Basket-ball 1, 2, 3; Class Wrestling 3; Glee Club 1; Debate 3; Masque and Buskin 2, 3; Science Club 2, 3; "Tea Toper Tavern"; Hi-Y 2, 3; Student Council 2.  
*Eat, drink, and be merry,  
For tomorrow we may diet.*

HAROLD CHINSTEDT

*Commercial*

Class Vice-President 3; Football 1, 2, 3; Basket-ball 1, 2, 3, Captain 3; Glee Club 1; Commercial Club 3; Student Council 1, 2, 3.  
*Hail to the chief of athletes!*

MADONNA COLE

*Commercial*

Volley-ball 2; Glee Club 1, 2, 3; Sacred Concert 1, 2; Masque and Buskin 1, 2, 3; "Cyclone Sally"; Social Science Club 1, 2, 3; Commercial Club 2, 3; Student Council 2.  
*Beware of her, for with her beautiful locks  
many a young man's heart she may snare.*

## YALE COLLE

*Manual training is his forte.*

Scientific

## MARGARET CORDTS

Language

THE SCROLLETTE 2, 3; Editor 3; Glee Club 1, 2, 3; Mixed Chorus 1, 2; Orchestra 1, 2, 3; String Ensemble 2, 3; Phi Chi A 3; Social Science Club 2, 3; Student Council 1; Quill and Scroll.

*If you want anything done, tell Mickey and forget about it.*

## KENTON COX

Scientific

Glee Club 1; Science Club 1, 2, 3; Hi-Y 1, 2, 3; Student Council 2.

*He should have been born to royalty; his mien is such.*

## AUDREY CRAWFORD

Commercial

Volley-ball 2; Glee Club 1, 2, 3; Declamatory 2, 3; B. H. S. Players 2, 3.

*Morning, noon, and night,  
Whatever she does, she does right.*

## WILLIAM CROUCH

Scientific

Class Basket-ball 1, 2; Class Wrestling 3; Class Swimming 1, 2; Class Baseball 1, 2; Glee Club 1; Hi-Y 2; Student Council 1; Bonita Club 1, 2, 3.

*Like a volcano, he is apt to break out in an awful riot when you least expect it.*

## HAROLD CROUTHAMEL

Commercial

Hi-Y 1; Class Basket-ball 1, 2, 3.

*Harold would rather farm than come to school.*

## HENRY CROUTHAMEL

Scientific

Basket-ball 1, 2, 3; Glee Club 1; Orchestra 1, 2; Hi-Y 1; Band 1, 2, 3; Student Council 1; Class Basket-ball 1, 2.

*You can't keep a good man down.*

## JOHN DAVIDSON

Scientific

Class Secretary 1; THE SCROLLETTE 3; Class Football 1, 2, 3; Class Basket-ball 1, 2, 3; Tennis 3; Glee Club 1; B. H. S. Players 3; Hi-Y 2, 3; Social Science Club 2, 3; Student Council 3.

*The world needs strong, silent men.*

## GLADYS DAVIS

Commercial

Basket-ball 1, 2, 3; Volley-ball 1, 2, 3.

*She has a mind of her own for her own special use.*

## HAROLD DAVIS

Scientific

Glee Club 1, 2; Orchestra 1, 2, 3; Brass Club 2, 3; Brass Quartet 3; Band 2, 3.

*I have my own opinions, but I do not care to express them.*

## WINIFRED DEBNER

Language

THE SCROLLETTE 3; Glee Club 2, 3; Phi Chi A 3; Social Science Club 3; Student Council 3.

*A willing heart and an artist's hand.*

## EVERETT DIXON

Scientific

Orchestra 2, 3; Brass Quartet 3; Class Basket-ball 3; Band 2, 3; Student Council 3.

*A boy who does his own thinking, and needs little advice.*

## LESLIE DORAN

Scientific

Glee Club 1; Science Club 1, 2, 3; Hi-Y 3.

*A good student, a better friend,  
He's always ready some aid to lend.*

## NINA DUCKWORTH

Language

THE BUMBLE "B" 1, 2, 3; Glee Club 1, 2, 3; Declamatory 2, 3; B. H. S. Players 2, 3; Phi Chi A 3; Social Science Club 3.

*She is a friend to everybody, and everybody is a friend to her.*

## MARTHA ECKHOFF

Commercial

Glee Club 2, 3; THE SCROLLETTE 3.

*Her shy, sweet way is like her nature.*

## MARGARET ECKSTEIN

Commercial

Volley-ball 2; Commercial Club 2, 3.

*A willing worker, neither weak nor weary.*

## HILDA EHMAN

Language

Glee Club 2, 3; Phi Chi A 3.

*She's too nice, too intelligent to forget.*

## LOIS ELLIOTT

Commercial

Basket-ball 1, 2; Volley-ball 1, 2; Social Science Club 2, 3.

*She is possessed of complete sincerity.*

## EVELYN ERWAY

Commercial

Swimming 1; Volley-ball 2; Social Science Club 2, 3; Commercial Club 1, 2, 3.

*A friendly heart; considerate of everyone.*

## MIRIAM EVANS

Language

THE BUMBLE "B" 2, 3; Phi Chi A 3; Social Science Club 3.

*It is well to think well, divine to act well.*

## EDNA FINCH

Commercial

Social Science Club 2, 3; Commercial Club 2, 3.

*It's nice to be natural, when you are naturally nice.*

## MARIAN FORNEY

Social Science

Declamatory 3.

*Dainty and shy as a wood-violet.*

## MARY LOUISE FRAMPTON

Social Science

THE BUMBLE "B" 3; Volley-ball 1, 2; Basket-ball 1, 2; Glee Club 1, 2, 3; Mixed Chorus 1, 2, 3; Sacred Concert 2, 3; Orchestra 1; Debate 3; B. H. S. Players 1, 2, 3; Phi Chi A 3; "As You Take It"; Social Science Club 2, 3; Student Council 1.

*Shining hair and winning smile;  
To be her friend is worth while.*

## DOROTHY FREDRICKSON

Arts and Crafts

Class Secretary 3; THE SCROLLETTE 3; Volley-ball 1, 2; Swimming 1, 2; Glee Club 2, 3; Mixed Chorus 2, 3; Declamatory 3; B. H. S. Players 2, 3; Social Science Club 2, 3; Student Council 1, 2.

*Her sunshine chases the shadows away.*

## LUCILLE FULLERTON

Scientific

Glee Club 1, 2, 3; Masque and Buskin 2, 3; Social Science Club 2.

*If she makes up her mind to finish a task, time is no barrier.*

## EARL GATES

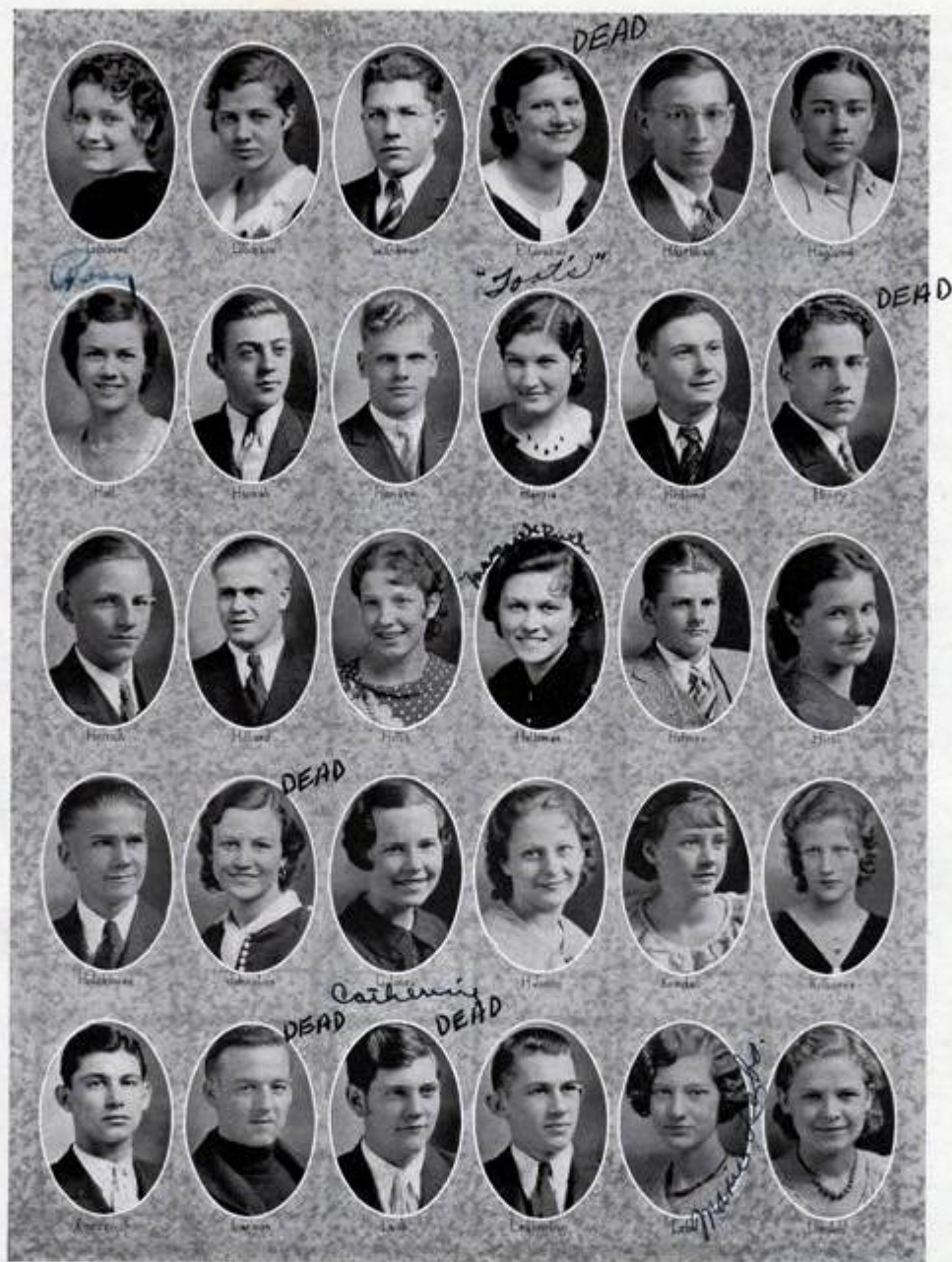
Scientific

Glee Club 1, 2, 3; Masque and Buskin 3; Boys' Science Club 2, 3; Hi-Y 3.

*As good natured as anyone could be.*

# The Scrollette 1934

The Senior  
Class  
1934



ELEANOR GIBBONS

Social Science Club 3.

*A saucy girl with sparkling eyes.*

Commercial

CARRIE GIBSON

Basket-ball 1, 2, 3; Phi Chi A 3.

*Your modesty is a candle to your merit.*

Social Science

WALLIS GIBSON

Football 1, 2, 3; Glee Club 1; Debate 3; Declamatory 2, 3; Hi-Y 2; Masque and Buskin 3; Student Council 2.

*All the world's a stage, and he's a real actor.*

Social Science

ELSIE GRABAU

*To know her is to like her.*

Commercial

HAROLD GRABAU

Band 1.

*Quiet and earnest.*

Agriculture

**The  
Scrollette  
1934**

**RUSSELL HAGLUND** *Scientific*  
Science Club 2, 3; President 3; Student Council 2.  
*Brains plus diligence will bring reward.*

**ROSALENA HALL** *Commercial*  
Glee Club 1, 2, 3; Orchestra 1, 2, 3.  
*She has two delights in her life—her fiddle  
and her friends.*

**WILLIAM HANNAH ('35)** *Social Science*  
Class Basket-ball 1; Class Football 1; Basket-ball 1.  
*A boy with an infectious grin.*

**JOE HANSEN** *Scientific*  
Glee Club 1, 2, 3; Orchestra 2, 3; Debate 3; De-  
clamatory 2, 3; Masque and Buskin 2, 3; Science  
Club 2, 3; Hi-Y 2, 3; Social Science Club 2, 3;  
Band 1, 2, 3; Student Council 1.  
*He's got a band, and the music's grand.*

**NANCY HARRIS** *Commercial*  
*Those eyes, so dark and deep!*

**JOHN HEDLUND** *Commercial*  
Class Football 1; Glee Club 1, 2, 3; Hi-Y 3.  
*There's time for work, but more for play;  
Happiness will e'er chase sadness away.*

**WILLIAM HENRY** *Scientific*  
Glee Club 1, 2, 3; Debate 3; Masque and Buskin 2,  
3; Science Club 2; President 3; "An Amateur Ham-  
let"; Hi-Y 2, 3; Social Science Club 2; Student  
Council 1, 2.  
*Among our numbers here is one,  
Always studying but ready for fun.*

**EARL HERRICK** *Scientific*  
Hi-Y 2, 3.  
*A good friend.*

**CHARLES HILLIARD** *Scientific*  
Class President 3; Masque and Buskin 2, 3; Hi-Y 2;  
Student Council 1; Bonita Club 1, 2.  
*Idol of the freshmen, friend of the sophomores,  
model of the juniors, and leader of the seniors.*

**DOROTHY HILTS** *Commercial*  
Volley-ball 1, 2; Basket-ball 1; Masque and Buskin  
1, 2, 3; "An Amateur Hamlet"; Social Science Club  
2, 3; Commercial Club 1, 2, 3; Student Council 1, 3.  
*Dancing is to me a joy.*

**MARGARET RUTH HOLLOMAN** *Commercial*  
Swimming 1; Basket-ball 1, 3; Glee Club 1, 2, 3;  
B. H. S. Players 2, 3; Social Science Club 2, 3; Com-  
mercial Club 1, 2, 3; Debate 3.  
*She laughs and dances and talks and sings.*

**DONALD HOLMES** *Agriculture*  
Class Basket-ball 1; Hi-Y 2, 3.  
*'Though his text books look new, he does like  
to read.*

**BILLIDEE HUNT** *Scientific*  
Glee Club 1, 2, 3; B. H. S. Players 3; Social Science  
Club 2, 3; Student Council 3.  
*Her eyes are deeper than the depth of water  
stilled at eventide.*

**FRANCIS HUTCHINSON** *Commercial*  
Basket-ball Manager 2; Class Basket-ball 1, 2, 3;  
Glee Club 1; Hi-Y 3.  
*We'll warrant him a good fellow.*

**ELLEN JOHNSTON** *Commercial*  
Volley-ball 1, 2; Basket-ball 1, 2; Glee Club 1.  
*Her ways are calm and quiet;  
Her voice is soft and low.*

**CATHERINE JONES** *Commercial*  
Glee Club 1, 2, 3; Orchestra 1, 2; Commercial Club  
2, 3; Student Council 3.  
*She will show the world great things can be  
accomplished.*

**HELEN JONES** *Language*  
Glee Club 1; Orchestra 1.  
*Temperament! A strong dose in a small quan-  
tity.*

**FERNE KENDALL** *Commercial*  
Glee Club 1, 2, 3; Commercial Club 3.  
*She's a most delicate creature.*

**BETTY ANN KILBORNE** *Commercial*  
Volley-ball 1, 2; Basket-ball 2; Swimming 1, 2; Glee  
Club 1, 2, 3; Commercial Club 1, 2, 3.  
*A light and happy heart lives long.*

**BRONE KNEZEVICH** *Scientific*  
Class President 1; Basket-ball 1, 2, 3; Football 1, 2,  
3; Captain 3; Glee Club 1; Masque and Buskin 3;  
Hi-Y 1, 2; Student Council 1.  
*In an athletic feat, he just can't be beat.*

**OSCAR LARSON** *Arts and Crafts*  
Swimming 1; Football 1; Social Science Club 3.  
*Sure, I'll study when nothing else moves up.*

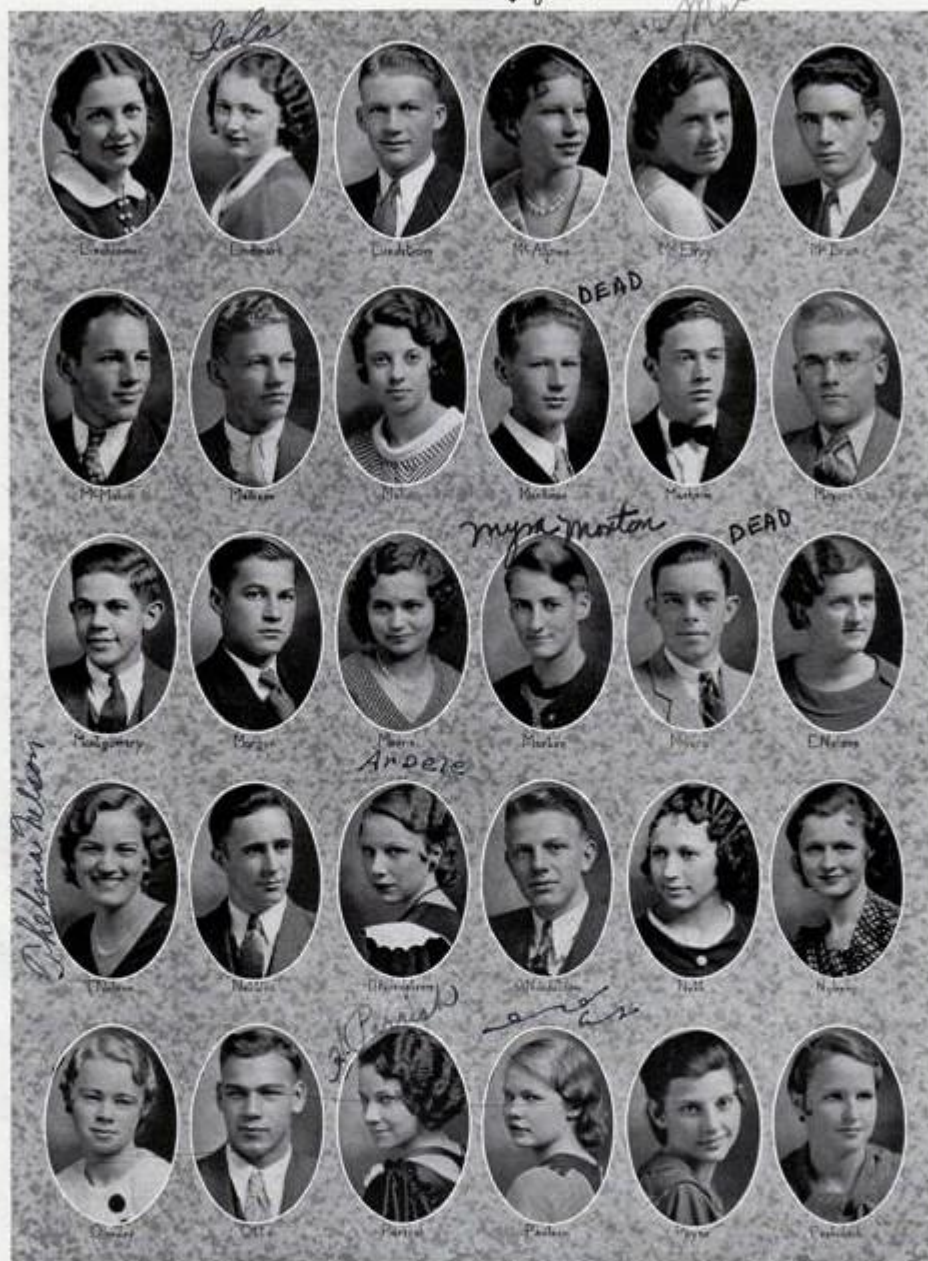
**ROBERT LAUB** *Scientific*  
Football 1, 3; Track 2; Swimming 1, 2, 3; Wrestling  
3; Bonita Club 1, 2; Glee Club 1.  
*'Though a landlubber, he smacks o' the sea.*

**GEORGE LEAVERTON** *Scientific*  
Class Basket-ball 1, 2; Swimming 1, 2; Wrestling 3;  
Masque and Buskin 3; Science Club 1, 2, 3; Hi-Y 1;  
Student Council 1; Bonita Club 1, 2, 3.  
*Of all those arts in which the wise excel,  
One of Nature's chief masterpieces is drawing  
well.*

**MARIE LERO** *Commercial*  
The Bumble "B" 2, 3; Glee Club 1, 2, 3; Commercial  
Club 2, 3; Quill and Scroll 3.  
*Whatever she does, she does thoroughly.*

**VERA LINDAHL** *Commercial*  
*Fair in complexion and nature.*

The Senior  
Class  
1934



IRENE LINDBLOM

Commercial

Glee Club 1, 2, 3; Debate 3; B. H. S. Players 2, 3, President 3; Social Science Club 2, 3; Commercial Club 1, 2, 3; Student Council 1, 3; Mixed Chorus 1, 3; Sacred Concert 2, 3.

*She has an eloquence of beauty.*

IOLA LINDMARK

Commercial

Commercial Club 3; THE SCROLLETTE 3.

*Ne'er summer morn was half so sweet.*

CHARLES LUNDSTROM

Commercial

Commercial Club 1, 2, 3; Masque and Buskin 1, 2, 3.  
*Sometimes funny, sometimes serious.*

ALICE McALPINE

Arts and Crafts

Basket-ball 1, 2, 3; Volley-ball 1, 2; Social Science Club 3.

*Blessed with charm—the certainty to please.*

DOROTHY McELROY

Commercial

Volley-ball 1, 2; Commercial Club 3.

*One in a million—just one "Mac"!*

# RAYMOND McILVAIN

Glee Club 3; Science Club 3.

*A boy of cheerful yesterdays and confident to-morrows.*

# GUY McMAHON

Class Basket-ball 2, 3; Football 1, 2; Track 1, 2; Student Council 2.

*Be gone dull care! You and I shall never agree.*

# JAMES MADISON

Swimming 1, 2; Football 2; Science Club 2, 3; Bonita Club 1, 2.

*James, your affections are as the wind; they blow this way and that.*

# IRENE MALLO

Social Science Club 3.

*Foeless but not beaules.*

# ROBERT MARKMAN

*The Bumble "B"* 2, 3; Football 2, 3, Manager 3; Masque and Buskin 3; Science Club 2, 3; Hi-Y 2, 3, President 3; Social Science Club 2, 3.

*A friend of all, and a friend to all.*

# WILBUR MAXHEIM

Class Basket-ball 2; Glee Club 1; Masque and Buskin 3; Science Club 1, 2, 3; Hi-Y 1, 2; Social Science Club 3.

*Might be a palm tree from the evidence of his dates.*

# EDWARD MEYERS

Hi-Y 1.

*School, in Edward's opinion, is chiefly a place to get one's rest.*

# GEORGE MONTGOMERY

*The Bumble "B"* 2; Swimming 1, 2; Glee Club 1; Masque and Buskin 3; Science Club 2, 3; Hi-Y 2; Student Council 3; Bonita Club 1, 2, 3.

*A clever person, who turns great troubles into little ones, and little ones into none at all.*

# ROSS MORGAN

Class Basket-ball 1, 2, 3; Class Baseball 1, 2, 3; Football 1; Science Club 2, 3; Glee Club 1; Hi-Y 2, 3.

*Spontaneous combustion.*

# ARDELE MORRIS

Glee Club 1, 2, 3; Phi Chi A 3; Social Science Club 3; Normal Training Club 2.

*A lovely maiden, free of all pretense.*

# MYRA JANE MORTON

*The Bumble "B"* 2, 3; Volley-ball 1, 2, 3; Basket-ball 1, 2, 3; B. H. S. Players 2, 3; Phi Chi A 3.

*Like the pond, still but deep.*

# JOHN MYERS

Swimming 1; Class Basket-ball 1, 2; Glee Club 1; Masque and Buskin 2, 3; Science Club 2, 3; Hi-Y 2, 3; Social Science Club 3; Band 2; Student Council 3; Golf 1, 2.

*Surely he will rise in the world, Saying little and performing much.*

# EILA NELSON

Basket-ball 1, 2; Volley-ball 1, 2, 3; Swimming 1; Social Science Club 2, 3; Commercial Club 2, 3.

*Her life is full of kind deeds.*

# THELMA NELSON

Commercial Club 3; Student Council 3.

*Good nature and good sense are always good companions.*

# HARRY NETTLES

Class Vice-President 1; *The Bumble "B"* 2, 3; Glee Club 2, 3; Orchestra 1, 2; Masque and Buskin 2, 3; Science Club 2, 3; Social Science Club 2, 3.

*Born for success he seems.*

# DORIS NORDSTROM

Glee Club 1, 2, 3; Masque and Buskin 2, 3; "The New Co-Ed"; Commercial Club 2.

*A bright young maiden with golden hair, Laughing eyes and face so fair.*

# ORLAND NORDSTROM

Glee Club 1; Orchestra 2, 3; Band 1, 2, 3; Student Council.

*Man through and through—and man must have a maid.*

# MELCENA NUTT

Orchestra 1, 2.

*A charming personality.*

# JEANETTE NYBERG

Glee Club 1; Commercial Club 1, 2, 3.

*An enthusiastic girl with a cheerful disposition.*

# ELEANOR OLANDER

Commercial Club 3; Student Council 2.

*Be good sweet maid— Most certainly you are clever.*

# GEORGE OTTO

Football 1, 2, 3; Class Basket-ball 1, 2, Captain 2; Track 1, 2, Captain 2.

*One of the athletic aces of B. H. S.*

# HATTIE PARRISH

Basket-ball 1, 2; Volley-ball 1, 2; Swimming 1, 2, Captain 2; Masque and Buskin 1, 2, 3; Bonita Club 1, 2; Student Council 1, 3; Commercial Club 2, 3.

*Our own Eleanor Holm.*

# MARGUERITE PAULSEN

*The Bumble "B"* 1, 2, 3; Glee Club 1; Social Science Club 3; Commercial Club 3, President 3; Quill and Scroll 2, 3.

*She is all perfections.*

# MARY ELIZABETH PAYNE

Social Science Club 3.

*You're so completely adorable.*

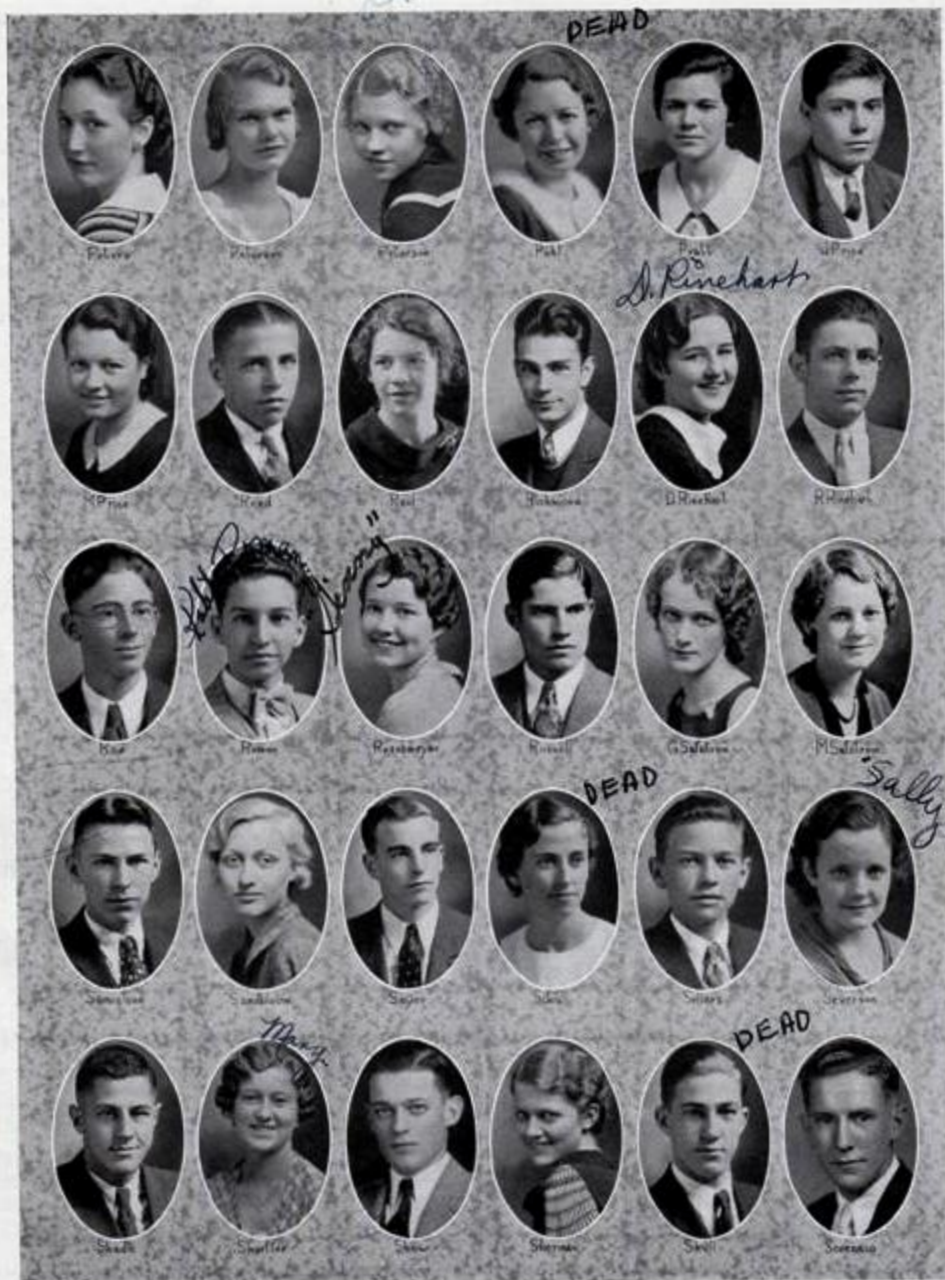
# MAXYNE PESTOTNIK

*The Bumble "B"* 1; THE SCROLLETTE 2, 3; Glee Club 1; Phi Chi A 3; Student Council 3; Quill and Scroll 2, 3.

*Liked here, liked there, liked everywhere.*

# The Scrollette 1934

The Senior  
Class  
1934



MARJORIE PETERS

Commercial

Volley-ball 1, 2; Basket-ball 1, 2; Swimming 1, 2;  
Glee Club 1; Masque and Buskin 2, 3; Social Science  
Club 2, 3.

*Damsel, take care where your fancy leads!*

IRENE PETERSON

Commercial

Glee Club 1; Sacred Concert 1; Masque and Buskin  
2, 3; Social Science Club 3; Commercial Club 3.

*Chic to the nth degree—she hides behind a  
flippant tongue.*

VIVIAN PETERSEN

Language

Phi Chi A 3.

*Every inch of her portrays a happy personality.*

ELOISE POHL

Social Science

Social Science Club 3.

*She holds herself above the herd.*

LEORA PRATT

Commercial

Volley-ball 1, 2; Basket-ball 1, 2; Glee Club 1; So-  
cial Science Club 3; Commercial Club 3.

*A manner plain, unaffected, and sincere.*

**The  
Scrollette  
1934**

**JOHN PRICE** *Commercial*  
Class Basket-ball 1, 2, 3.

*John was a dependable, efficient assistant in the office.*

**MARGARET PRICE** *Commercial*  
Social Science Club 3; Commercial Club 3.

*She's cute; she's witty;  
She's in love; what a pity!*

**KAY REED** *Scientific*  
Glee Club 2, 3; Orchestra 1, 2, 3; Band 1, 2, 3; Hi-Y 2, 3.

*I would rather have music than eat.*

**NAN REID** *Social Science*  
Glee Club 1, 2, 3; Masque and Buskin 2, 3; Social Science Club 2, 3.

*Scientists say that red hair is a sign of inflexible will.*

**LENNARD RICHMOND** *Commercial*  
Glee Club 1; Hi-Y 2.

*Seldom is found a handsome lad with so little ego.*

**DOROTHY RINEHART** *Commercial*  
Volley-ball 1, 2; Basket-ball 1, 2, 3; Glee Club 1, 2; Social Science Club 2, 3; Commercial Club 2.

*A dandy girl, we like her well;  
We never could her virtues tell.*

**ROBERT RINEHART** *Commercial*  
Class Basket-ball 1, 2, 3; B. H. S. Players 2, 3; Social Science Club 2, 3; Commercial Club 2.

*Reserved and dependable.*

**LORAN ROE** *Social Science*  
Class Basket-ball 1, 2; Glee Club 1, 2.

*A very likable person is he,  
This red-haired chap, as you can see.*

**ROBERT ROMAN** *Commercial*  
Commercial Club 3.

*Oh well, I can't do everything;  
I'll give the other fellows a chance.*

**VIRGINIA RUSCHMEYER** *Commercial*  
Glee Club 2, 3; Declamatory 2, 3; Masque and Buskin 3.

*Beauty is as beauty does—and look what it did.*

**ORVILLE RUSSELL** *Commercial*  
Glee Club 1; Commercial Club 3.

*A quiet chap, but when he says something it is worth saying.*

**GLADYS SAFSTROM** *Commercial*  
Volley-ball 1; Basket-ball 1; Glee Club 1, 2, 3; Mixed Chorus 2; Social Science Club 3; Commercial Club 2, 3.

*Blond and sweet as a peach.*

**MARGARET SAFSTROM** *Commercial*  
Basket-ball 1, 2, 3; Volley-ball 2; Glee Club 1, 2, 3; Social Science Club 2; Commercial Club 2, 3; Student Council 3.

*A jewel of a girl; far better than a jeweled girl.*

**BOYCELL SAMUELSON** *Commercial*  
Commercial Club 2, 3.

*Reticent 'mid wagging tongues—  
Conservative 'mid radicals.*

**JANE SANDBLOOM** *Commercial*

Basket-ball 1, 2; Volley-ball 3; Swimming 1, 2; Glee Club 1, 2, 3; Declamatory 3; B. H. S. Players 1, 2, 3; "As You Take It"; Social Science Club 2, 3; Commercial Club 2, 3; THE SCROLLETTE 3.

*Again the theatre claims its own.*

**MARVIN SAYRE** *Social Science*  
Student Council 3; Class Basket-ball 1, 2; Track 1, 2; Football 3.

*Men of few words are the best men.*

**HELEN SCHALL** *Commercial*  
Volley-ball 1, 2; Basket-ball 1, 2; Glee Club 1; Social Science Club 2, 3.

*Happy go lucky and full of pep,  
Here's a girl with a very fine "rep."*

**JAMES SELLARS** *Commercial*  
Class Basket-ball 1, 2, 3; Class Baseball 1, 2, 3; Glee Club 1, 2.

*He lacks only originality to blossom into a "wise guy."*

**ESTHER SEVERSON** *Commercial*  
Masque and Buskin 1, 2, 3; Social Science Club 3.

*She is so sweetly subtly sweet.*

**BONNARD SHADLE** *Social Science*  
Class Basket-ball 1, 2, 3; Class Baseball 1; Masque and Buskin 3; Track 1, 2, 3; Football 1, 2, 3; Basket-ball 1, 2; Swimming 1; Glee Club 1, 2; Science Club 2, 3; Social Science Club 3; Student Council 1, 2, 3.

*As prone to mischief as able to perform it.*

**MARY SHAEFFER** *Commercial*  
Droll humor sparkles under her slow smile.

**ROBERT SHAW** *Social Science*  
Track 2; Swimming Activities 1, 2, 3; Class Basket-ball 2; Masque and Buskin 2, 3; Science Club 3; Hi-Y 3; Student Council 3.

*A pleasant boy with plenty of initiative.*

**LILLIAN SHERMAN** *Commercial*  
Volley-ball 1; Basket-ball 1; Glee Club 1, 2, 3; Mixed Chorus 2; B. H. S. Players 2, 3.

*Her life has always been busy and earnest.*

**CURTIS SHULL** *Scientific*  
Class Basket-ball 1; Masque and Buskin 2, 3; Hi-Y 2.

*A mischievous boy with a sense of humor.*

**KENNETH SORENSON** *Social Science*  
Orchestra 1, 2; Band 1, 2.

*He looks keen—for clothes do make the man in the eyes of the ladies.*



**The  
Scrollette  
1934**

**GAYLE TABOR** *Scientific*  
Orchestra 2, 3; Science Club 2, 3; Social Science Club 3; Band 1, 2, 3.  
*A merry smile that does good like medicine.*

**ROBERT TAYLOR** *Commercial*  
Masque and Buskin 2, 3; Stage Manager, "The New Co-Ed."  
*A handy fellow with hammer and saw.*

**ROBERT THOMPSON** *Scientific*  
Swimming 1; Glee Club 1; Orchestra 1; Band 1; Student Council 1.  
*Robert will never die of overwork.*

**THELMA THOMPSON** *Social Science*  
Volley-ball 1, 2, 3; Basket-ball 1, 2, 3; Glee Club 2, 3; Orchestra 3; Masque and Buskin 3; Normal Training Club 3; Band 3.  
*She has no faults; her eyes no faults can see.*

**RUTH THORNGREN** *Scientific*  
Class Vice-President 2; *The Bumble "B"* 1, 2, 3; Masque and Buskin 1, 2, 3; Phi Chi A 3; "An Amateur Hamlet"; Social Science Club 3; Student Council 3; Quill and Scroll 3; Basket-ball 1, 2.  
*Sweet and neat, as pretty a girl as you chance to meet.*

**GRACE JANE WARNER** *Commercial*  
Glee Club 1, 2, 3; Declamatory 3; Social Science Club 2, 3; Commercial Club 1, 2, 3, President 3; Student Council 2; B. H. S. Players 2, 3.  
*She takes delight in domestic science;  
She's learning to cook for two.*

**DOROTHY WATKINS** *Arts and Crafts*  
Student Council 1.  
*Be loving, and you will never want for love.*

**MAXINE WEBB** *Commercial*  
*Is anyone to blame for loving her?*

**HARRY WELLS** *Scientific*  
Debate 3; Declamatory 2, 3; Masque and Buskin 3; Hi-Y 3; Social Science Club 3; Band 1; Woodwind Club 1.  
*Responsibilities sit lightly on Harry's shoulders.*

**WILLIAM WESTFALL** *Scientific*  
Class Basket-ball 1; Glee Club 1; Science Club 3; Hi-Y 2, 3; Band 2, 3; Student Council 1.  
*What heart of woman is proof against thy manly charms?*

**DARREL WILSON** *Scientific*  
Science Club 2, 3; Hi-Y 3.  
*The power of a man increases steadily by continuance in one direction.*

**IRENE WILSON** *Commercial*  
Social Science Club 3; Commercial Club 3; Student Council 2.  
*Cute as a bug's ear—and more fun.*

**JOHN WILSON** *Scientific*  
Glee Club 1, 2, 3; Debate 3; Declamatory 2; Masque and Buskin 2, President 3; Science Club 2, 3; "An Amateur Hamlet"; Hi-Y 2, President 3; Social Science Club 3; Student Council 2, 3.  
*He has the gift of persuasion.*

**NORMA JANE WILSON** *Language*  
Glee Club 1; Declamatory 2, 3; Masque and Buskin 2, 3; Social Science Club 3; Student Council 1.  
*The best asset in life is a host of friends.*

**FREDERICK WIRTH** *Social Science*  
Class Basket-ball 1, 2; Hi-Y 1.  
*They are only truly great, who are truly good.*

**THRESA ANN WOODRUFF** *Commercial*  
Commercial Club 3.  
*Heart whole and fancy free.*

**FERRYL YEAGER** *Commercial*  
Basket-ball 3; Commercial Club 3.  
*The mildest manner, the gentlest heart!*

**FRANCIS YEGGE** *Scientific*  
Science Club 2, 3; Hi-Y 3.  
*A true friend wherever a friend is needed.*

**JAMES YOUNGGREN** *Scientific*  
Glee Club 1, 2; Orchestra 1, 2, 3; Masque and Buskin 2, 3; Hi-Y 1, 2, 3; Band 1, 2, 3; Student Council 1, 2.  
*A roguish sort of fellow.*

**GERALDINE ZAHN** *Commercial*  
Class Secretary 2; *The Bumble "B"* 1, 2; *The Scrollette* 3; B. H. S. Players 1, 2, 3; "Elmer"; Social Science Club 2, 3; Commercial Club 2, 3; Quill and Scroll 2, 3.  
*She's careful with those great big eyes;  
'Cause she's oh, so faithful.*

**WALTER ZIMBECK** *Scientific*  
Class Basket-ball 1, 2, 3; Science Club 2; Hi-Y 2, 3; Commercial Club 2.  
*A noisy boy, but one with a big heart and a desire to please.*

## Class History

“T IS a history that will not bore,  
This of the Class of '34.  
If sometime you were to dwell  
'Pon that of other classes, well!  
You would find that ours is the best;  
More captivating than the rest.  
The president in our first year  
Was “Brownie” Knezevich, we're  
Proud to say. Then the office turns,  
The second year, to Kenneth Burns.  
Leading this year's activities,  
Charles Hilliard shows abilities,  
As president of the class.  
And a duty undone will surely pass  
To Chinstedt, Charles's right hand man,  
The vice-president of our clan.  
Geraldine Zahn, to our great pleasure,  
Was elected secretary-treasurer.  
In football and basket-ball have we:  
Otto, Chinstedt, and good “Brownie”;  
Laub, Burns, and Crouthamel are some who  
Comprise our Senior athletes. 'Tis true  
There is much brilliance in our ranks,  
For mentally there have been no blanks.  
Our vivid intelligence displays  
That we'll lead the world in future days.  
Margaret Eckstein, an example has set,  
When she won a 120-Word Certificate.  
She is the first Boone High annals record  
As commercially honored; the class can afford  
To boast. Slight time had we for festivities  
And other social activities.  
Ever an interest in school life we took,  
As you may see pictured in this book.  
A popular enterprise is debate;

And always interest it does create.  
Among the Seniors who debate,  
Hansen, Henry, Wells, and Gibson rate.  
In “declam” we're represented by a lad of size,  
Wallis Gibson, who won the prize.  
“Tea Toper Tavern” is the play,  
The dramatic clubs chose to portray.  
Concerning our membership in all the clubs,  
You'll find we certainly are no dubs.  
Of Glee Club members we've quite a few,  
Singers, warblers, and crooners, too.  
Billy Hannah with Bing Crosby competes.  
Singers in our class whom one often meets  
Are: Nordstrom, Allen, and Frampton.  
Listening to their songs is lots of fun.  
We have pianists, also, who lead:  
Suthern, Cox, Duckworth, and Reid.  
And then we have other musicians at hand,  
Participating in orchestra and band.  
Without their melodies that delight,  
We surely would be in a very sad plight.  
As dancers, lots of praise has been won,  
By the “Margs,” Blanchard and Holloman.  
That Jane Sandbloom can write is a fact;  
Her plays and programs always attract.  
Among workers earnest and true, you'll see  
Those who write *The Bumble “B.”*  
Beautiful girls and handsome young men,  
Very popular we have been.  
Many of us have won great fame;  
We could not mention all by name;  
A thing too difficult to be done,  
But we're proud of each and every one.  
And lest you forget—it took  
Our staff to write this book!

—E. A.



Band



Basket-ball



Debate Squad



Football



Orchestra

## ABC's for '34

**G**OD-SPEED, Seniors, the best of luck to you!  
Since childhood days you've followed through,  
You've learned a bit of Q's and P's,  
And mastered all your A B C's.

Those lettered blocks of wood have been  
The stepping stones from boy to man;  
And so in order that you may see,  
We present the class, from A to Z!

**A**USTIN

Strife and toil and glory won  
Are entirely foreign to Billy Don.

**B**LAESS

Norman's the darling of old Boone High.  
The naive cause of each feminine sigh.

**C**HINSTEDT

Blessed with manly scorn—yet so shy,  
"Chinny's" our hero—he's one great "guy."

**D**UCKWORTH

We nominate to our hall of fame,  
The *petite* Nina, "Ducky's" the name.

**E**HMAN

The *intelligensia*, the brain "1 plus";  
If you don't know, then Hilda must.

**F**REDRICKSON

This bonnie lass called Dorothy,  
Is amply blessed with femininity.

**G**IBSON

A great voice plays a great part in nations.  
More power to you, "Hoot," in your orations.

**H**UNT

"Different" is the keynote to Billy Dee.  
"Nuff" said, as far as we can see.

**I**RENE PETERSON

In this platinum head we're told  
Live many thoughts of purest gold.

**J**ONES

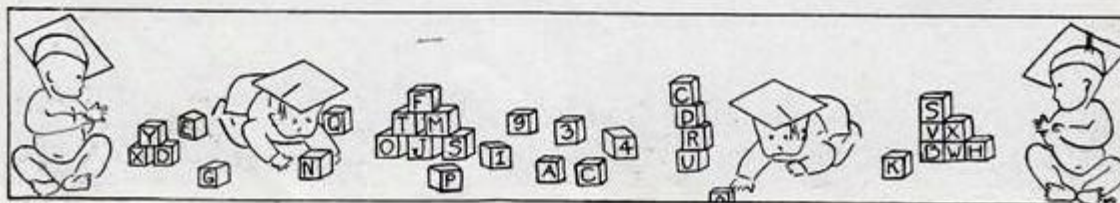
Wiles and smiles tell the tale,  
Why Helen's so popular with the "males."

**K**NEZEVICH

Blessings on thee, "Brownie" K,  
How'd you ever get that way?

**L**ARSON

In our ranks, Oscar fills an important place:  
No less than the class's joyous scapegrace.



## ABC's for '34—(Continued)

**M**ONTGOMERY

With the lilt of a grin, imp of Satan within,  
Sure, an' "Sunny" describes the likes o' him.

**N**ORDSTROM

If the strong and the silent is the true man,  
As Exhibit "A" we offer Orland.

**O**TTTO

A bold, strong "he-man" of muscular arm,  
But he's weak in the face of feminine charm.

**P**RATT

A "darlin'" brown-eyed "gal,"  
The very best kind of a pal.

**Q**UEER

Queer it is—and yet 't is true,  
There's "nary" a name that boasts a "Q."

**R**OMAN

There's something lacking and we'll bet,  
It's that Romeo needs a Juliet.

**S**HADLE

Bonnard is a bit of a wit,  
And we might precede it with "nit."

**T**HORNGREN

Of gentle virtues, and, forsooth,  
Like the girl in the Bible is this Ruth.

**U**

If Ulysses were the name of somebody's pet,  
We'd been able to complete our class alphabet.

**V**IRGINIA R.

Given to "readings," cute as a bug's ear,  
Famous for a perfect coiffure.

**W**ESTFALL

Billy submits to analysis,  
Just as he submits to a pretty young miss.

**X**

Let the X mark the spot,  
Of anyone that we forgot.

**Y**EGGE

And he seems such a nice boy, too.  
Shh—but if we only knew . . .

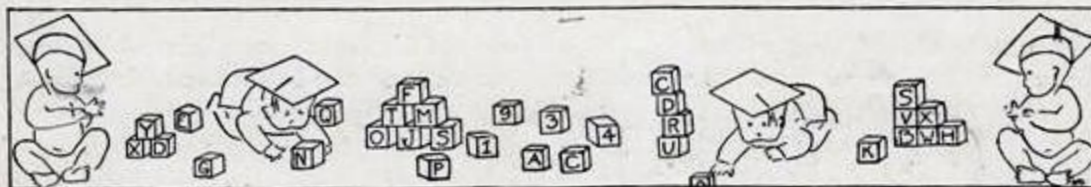
**Z**AHN

Personality and zest,  
Characterize our Jerry best.

*As the hands of time go 'round the clock,  
They mark both an end and beginning in  
The graduation of our flock.*

*So ring down the curtain on twelve years of school,  
Put away our blocks and let life's duties rule.*

—M. P.



## Class Will

WE, THE Class of 1934, by this our last will and testament, hereby revoke and make void all previous wills or promises made by us anytime heretofore.

Being of sound mind and body we do give and bequeath to the following named persons such attributes and virtues which we know will benefit them in the future:

- Item I.* We, the Seniors, do grant to Mr. Wooten and Mr. Van Ness strength, patience, and what have you to carry out their occupation of leadership successfully.
- Item II.* To the titian-haired miss in the office we bequeath a set of books on "Clues to Forged Signatures" and also our very efficient lie-detector.
- Item III.* "Brownie's" gift of gab goes to the very garrulous Joe Cantlin.
- Item IV.* Jimmy Madison's curiosity to Charles (Winchell) Zimbelman.
- Item V.* Marge Blanchard's "certain something" to Mary Jane Gustafson.
- Item VI.* Virginia Ruschmeyer's domesticity to Mary Lyon.
- Item VII.* Jack and "Sonny's" brilliance and desire to get "squiffed" go to Hall and Ole.
- Item VIII.* Ken Burns's ability as lady-killer is willed to Robert Enlow.
- Item IX.* Mary Lu Frampton's inferiority complex goes to Joy Edmondson—special delivery.
- Item X.* Billie Hunt's and Nan Reid's crowning glories to any would-be red-headed Juniors.
- Item XI.* Joe, Bill, and Johnny's "three-in-oneness" to Bob Cooper, "Junior" Harvey, and Tom Updegraff.
- Item XII.* Myra Morton's athletic ability is bequeathed to Rovenia Conn.
- Item XIII.* Miriam Evans's and Marguerite Paulsen's intellect is willingly willed to Charlotte Stark and Leila Johnson.
- Item XIV.* Bill Westfall's chauffeur badge, license, etc., to Harold Vogler.
- Item XV.* Eila Lee Breedlove's dash, noise-making capacity, etc., to "Toots" Goeppinger.
- Item XVI.* Marge Holloman, Grace Jane Warner, and Jerry Zahn's attractiveness to any and all Junior girls with seemingly hopeless futures.
- Item XVII.* All the Senior musicians will their ability to aspiring Junior musicians.
- Item XVIII.* To the Class of '35 we dedicate "Everything I Have Is Yours"; we give the distinguished title of *Seniors*, our dignity, common sense, and charm.

In witness whereof we, the Class of 1934, the testators, have set our hands and seal to this

our will this fifteenth day of May, *Anno Domini*, one thousand nine hundred and thirty-four.

SEAL

Witnesses: { Z. S.  
                  { D. S.

Lawyer: N. D.

## *Silly Senior Songs*

**L**ITTLE Paul Brunning sat on a corner  
Eating an Eskimo pie;  
He ate three or four, and still asked for more  
And said, "What a cold boy am I."

★ ★ ★

Handy, "spandy," "By" Clapp, dandy;  
Loved orange pop and chocolate candy;  
He bought all they had in the five and ten;  
Oh, what a sweet boy he has been!

★ ★ ★

Margaret, Margaret, sweet and dainty,  
How does your hope chest grow?  
Busy as bees with talks and teas,  
And pretty parties all in a row.

★ ★ ★

Lillian Sherman went to her locker,  
To get her sweet self a book;  
But when she got there, the locker was bare,  
Beware, if you are the crook!

★ ★ ★

Fe, fi, fo fum,  
Teacher smelled John Davidson's gum,  
She ordered him to park the same,  
And put a red mark by his name.

★ ★ ★

Billy Hannah, puddin'-'n-pie,  
Teased the girls and made them cry,  
When the girls came out to play,  
I heard, that Billy ran away.

Actors find no place in heaven,  
So I'm often told;  
But Kenny Bricker, in "Kitty's Dates,"  
Is being honor-rolled.

★ ★ ★

There was a young man named Joe,  
Who fed on the lowly banana,  
His last name was Hansen,  
He liked fancy dancin',  
And always was shouting "Hosanna."

★ ★ ★

There was a young lady named Ruschmeyer,  
Of ultra-blonde tresses, forsooth.  
In matters dramatic,  
She was not all static  
As heroine, villain 'n sleuth.

★ ★ ★

Big Bill Larson runs through the school,  
Upstairs and down stairs, breaking every rule;  
Knocking at the windows, kicking at the doors,  
Sliding down railings, and landing on the floors.

★ ★ ★

The big word slinger,  
Who on "Webster" did dine,  
Was a lad bright and sane  
Called Raymond McIlvain.

—J. S.



## The Bumble "B" Staff

### EXECUTIVE STAFF

<i>News Editor</i>	JAMES FOX
<i>Feature Editor</i>	MARGUERITE PAULSEN
<i>Copy Editors</i>	CATHERINE CANAKES, MARY LYON, CHARLOTTE STARK
<i>Sports Editor</i>	SHERRILL BROWN
<i>Business Manager</i>	MARY JANE GUSTAFSON
<i>Advertising Manager</i>	ROVENA CONN
<i>Faculty Adviser</i>	MISS DAGMAR HANSEN

### BUSINESS STAFF

*Exchange:* Ruth Thorngren, Eleanor Walker.  
*Feature Writers:* Charles Zimbelman, James Nelson, Herbert Erbe, Alyce Rice, Joy Edmondson, Hilda Huddleson, Byron Clapp.  
*Reporters:* Delma Witt, Bernice Davis, Miriam Evans, Nina Duckworth, Alice Runyon, Eleanor Shaw, Eila Lee Breedlove, Lucille Shaw,

Dwight Morrison, Dick Thompson, Dorothy Stark, Jayce Stark, Nadine McAllister, Crystal Shaw, Louise Anderson, Frances O'Connell, June Witt, Marie Lebo.

*Junior High Editor:* Junior Savereid.

*Reporters:* Clyde Sparks, Francis Lindell, Ellen Thompson.

### EDITORIAL STAFF

*Bookkeeper:* Robert Weeks.  
*Solicitors:* Patty Anne Fowler, Louise Fick, William Updegraff, Wesley Herrald, William Lindmark, Myra Jane Morton, Faye Fitzsimmons, Jack Swander.

*Collector:* Richard Brumhall.

*Typists:* Frances Londrigan, Ruth Thompson, Shirley Fey, Delores Stark, Ferryl Yeager.

*Business Adviser:* Mr. Karl Longnecker.



*The  
Scrollette  
1934*

•

## Quill and Scroll

ORGANIZED April 10, 1926, the Quill and Scroll, international honorary society for high school journalists, has grown and improved yearly.

This society has, from the start, sponsored contests in different fields of creative work. Our own chapter takes part in these contests each year. The society undertakes other tasks: it makes criticisms of high school publications and publishes a magazine containing practical information concerning every phase of publication work.

To become a member of Quill and Scroll, a student must be in the Junior or Senior class; must rank in the upper third of his class scholastically; must have done superior work in some phase of journalism; must be approved by the national secretary.

Marguerite Paulsen is president of the Boone chapter, which meets every two weeks and presents a program. These programs tend to give the members a broader knowledge of journalism and work in allied fields.

Last fall the Boone chapter of Quill and Scroll gave a dinner at the Hotel Crary, when the following students from *The Bumble "B"* staff were initiated: James Fox, Mary Lyon, Charlotte Stark, Rovenia Conn, Herbert Erbe, Alyce Rice, Joy Edmondson, Marie Lebo, Catherine Canakes, Hilda Huddleson, Ruth Thorngren, and Dorothy Stark. At the end of this school year the students who have done outstanding work on THE SCROLLETTE staff will be initiated into Quill and Scroll.



## *The National Honor Society*

THE National Honor Society is, perhaps, the organization most looked-up to in Boone High School. The student elected to membership stands out as being superior in his class. He must not only excel in scholarship, leadership, character, and service, his grades ranking in the upper one-third of his class; but in order to wear the honor pin, he must pledge loyalty to the society and live his life as would befit one having gained such an honor.

Twenty-five students met the requirements and have gained membership this year. They are: Sherrill Brown, Margaret Blanchard, Arnold Bell, John Davidson, Hilda Ehman, Myra Morton, George Montgomery, Margaret Safstrom, John Wilson,

Jane Sandbloom, John Myers, Geraldine Zahn, Nina Duckworth, Russell Haglund, Miriam Evans, Eleanor Olander, Kenneth Burns, Byron Carlson, William Henry, Margaret Eckstein, Catherine Jones, Marguerite Paulsen, Leora Pratt, Ruth Thorngren, and Darrel Wilson.

★ ★ ★

The charter members of the society number eighteen. They are: Louise Dorrance, Jeannette Moore, Cordelia Canakes, Boyd Pestotnik, John Dyer, Catherine Cooper, Owen Weeks, Weldon Brown, Gerald Shadle, Gretchen Merrick, LaVerne Heaps, Donald Lebo, Ruth Wooten, Mary Lou Means, Dan Enich, Paulina Mills, Eloise Anderson, and Kenneth Mann.



*The  
Scrolllette  
1934*

## THE SCROLLETTE Staff

MARGARET CORDTS

EMMA ABBENSETH

ALICE AUSTIN

LEILA JOHNSON

JANE SANDBLOOM

CHARLES SCHARNWEBER

GERALDINE ZAHN

DOROTHY FREDRICKSON

JOHN DAVIDSON

KENNETH BURNS

WINIFRED DEBNER

IOLA LINDMARK

MAXYNE PESTOTNIK

MARTHA ECKHOFF

*Advisers: MRS. STEVENS, MISS SHALER, MR. HARTLEY*

## Old Man "Depression" Again

ONE more offense, the non-appearance of the '34 *Scroll*, can be laid at the door of old man "Depression." But rather than leave the Senior class without a memory book of any sort, *The Scroll* staff decided to publish THE SCROLLETTE, a magazine supplement

to *The Bumble "B."* Whether or not the old *Scroll* will reappear next year depends on financial conditions and the sentiment of the student body. In the meantime, we hope you like our substitute, THE SCROLLETTE.

**Help Those Who Help Us • Patronize Our Advertisers**

## Kastner Abstract Company

ABSTRACTS OF TITLE  
AND  
REAL ESTATE LOANS

BOONE

Telephone: 228

IOWA

## J. C. PENNEY COMPANY, Inc.

*Congratulations, Best Wishes, and Happiness  
to Every Student ~*

## *For Those Who Demand Quality!*

Brunner's Best  
Brand Butter

Peerless Brand  
Ice Cream

MADE BY

**The Peerless Dairy Products Company, Inc.**

TELEPHONE: 524

BOONE, IOWA

1001 EIGHTH STREET

**QUALITY CLOTHES**  
STYLED FOR YOUNG MEN



**J.C. PETERSEN CO.**

**CLOTHIERS**

811 STORY STREET

# ROCHO BROTHERS, Inc.

COAL... We cannot sell all the coal so we sell only the best—high in heat  
—low in ash.

ICE... The best known refrigerant.

REFRIGERATORS... that keep the cold in and the heat out.

*Crystal Clear Ice Cubes . . . . . Crushed Ice for Frozen Dessert.*

ASK US ABOUT THE COOLERATOR . . . . SOLD ON THE INSTALLMENT PLAN!

*The  
Scrollette  
1934*

## OUR GLASSES Are Made in Boone and Worn Everywhere!

*Are your eyes failing?*

**HOOK JEWELRY  
& OPTICAL COMPANY**

707 STORY STREET

## Peanuts!

Freshly Roasted Daily!

**The NUT HOUSE**

724 Eighth Street

ACROSS FROM THE HOLST HOTEL

### *Cook Wanted*

Bill Westfall: "Is this vegetable all we are going to have for dinner tonight?"

Nina D.: "Yes, dear. You see, when the chops caught fire and fell into the pudding, I had to use the soup to put it out."

\* \* \*

Mr. Peters: "I don't like to see our daughter lighting cigarettes."

Mrs. P.: "Oh, don't be old-fashioned, 'Pete'."

Mr. P.: "It isn't that. She's too young to be playing with matches."

Brownie: "Is it good taste to eat pie with a knife?"

Chinny: "That all depends on the pie."

\* \* \*

Sherrill Brown's father was away. That night late, his mother heard a sound downstairs.

Sherrill: "I'll go down and if it's a burglar I'll scare him away. This will be a battle of brains."

Mrs. Brown: "No, son. You mustn't go down unarmed."

\* \* \*

Esther Severson: "Can you stand on your head?"

Mary Brogden: "No, it's too high."

# MILLER DRUG COMPANY

Parker and Sheaffer Pens and Pencils

Kodaks, Stationery, Fine Candies, Sodas

*The **Rexall** Store*

ERNEST W. THORSON

H. A. HOUGHTON

## HOUGHTON & THORSON AGENCY, INC.

— *of* INSURANCE IN ALL ITS BRANCHES *of* —

Rooms  
4 & 5

CITY TRUST & SAVINGS BANK BUILDING

Phone:  
48

CHARLES E. ANDERSON  
Life, Accident, and Health Department

ISABEL HORA  
Stenographer and Bookkeeper

Curtis Shull: "'Sonny' Montgomery's certainly sore today."

George Leaverton: "What happened?"

C. S.: "He took his girl to dinner last night and while they were eating soup she found a fly. 'Waiter,' she said, 'remove this insect'."

G. L.: "And—?"

C. S.: "They threw 'Sonny' out the back door."

★ ★ ★

Chivalry isn't dead. The boy who honks for his girl usually leans over to open the door for her.

Eila Lee Breedlove: "What sort of a grade does Miriam Evans expect to get on her Latin final? Is she worried?"

Hilda Ehman: "Worried is right. Why, she's got so many wrinkles on her forehead she has to screw her hat on."

★ ★ ★

Dorothy Fredrickson: "This is a very large skating pond we have here."

Ed Meyers: "Oh, yes. It has a seating capacity of 1,000."

## *The* 1934 SCROLLETTE

is an example of  
the work of the



## Standard Printing Company

307 KEELER STREET

BOONE, IOWA

TELEPHONE 16

This Brings Congratulations and Best Wishes Just for You,  
For a Happy Graduation and Success in All You Do.

E. S. LAINSON  
*Boone's Photographer*

*The  
Scrollette*  
1934  
•

If It's NEW, It's Here  
If It's Here, It's NEW.



SCHMIDT'S *Ready-to-wear*  
BOONE, IOWA

GROWN IN BOONE

Phone: 280

*Kemble's  
Flowers*

*We Deliver*

WE TELEGRAPH FLOWERS

Ned Jones: "What's the most you ever got out of  
your car?"

Bud Starks: "About five times in a mile."

★ ★ ★

Paul Brunning: "I can see I'm only a little pebble  
in your life."

Dorothy Davidson: "That's all, but I wish you were  
a little boulder."

★ ★ ★

Irene L.: "That young doctor is quite conceited,  
isn't he?"

Mary Louise: "Yes, he's an *I* specialist."

Notice clipped from a small weekly newspaper:

"The ladies of the Helping Hand Society enjoyed  
a swap social on Friday evening. Everybody brought  
something she didn't need. Many of the ladies were  
accompanied by their husbands."

★ ★ ★

*No Territorial Limitations*

John W.: "Do you know, Dad, that in some parts  
of Africa a man doesn't know his wife until he  
marries her?"

Mr. W.: "Why single out Africa?"

MYERS, WHITEHILL  
& WHITAKER, M. D.'s

Physicians' Building

REAS

• New suits have the fabrics that will wear, al-  
so the fabrics that have lots of snap and style.

POPULAR PRICES

*Graduation Gifts for Him:* Pajamas; Shirts; Ties;  
Handkerchief and Tie Sets; Hose, regular lengths  
and Anklets; Shirts and Shorts; Blend Suits.

Rea Clothing Company

—♦ Value First ♦—

QUALITY and STYLE at Moderate Prices  
is our motto

THE RIEKENBERG COMPANY

*Dry Goods, Ready-to-wear, Millinery, Rugs, Linoleum, Shades*

Mr. Yegge: "How was the archery practice the other day, son?"

Francis: "Couldn't hit a thing."

Mr. Yegge: "Hope you hit something today."

Francis: "Whoa, Dad. Today I'm going motoring."

★ ★ ★

Margaret Holloman: "Do you know love has always been the same?"

Irene Peterson: "How's that?"

Margaret H.: "Well, I just read an ancient Greek story about a girl who sat up all night listening to a lyre."

"Orville, what would you suggest to bring back prosperity?"

Orville R.: "The horse, sir. Bring back the horse and the country will be stabilized."

★ ★ ★

Miss Carlson: "Always remember that whatever you attempt there is only one way to learn. That is by beginning at the bottom. There are no exceptions to this rule."

Margaret Blanchard: "None at all?"

Miss Carlson: "No."

M. B.: "Then how about swimming?"

Elliott-Wilson Drug  
Company

PRESCRIPTION DRUGGISTS



TWO STORES:

814 Eighth Street  
Telephone: 34

715 Story Street  
Telephone: 38

DYER, JORDAN & DYER

SECURITY SAVINGS BANK  
BUILDING

TELEPHONE: 129      BOONE, IOWA

OTTO BRAKLOW

HARNESS & LUGGAGE  
REPAIR WORK

TELEPHONE: 397W

722 Eighth Street

Boone, Iowa

*Where satisfaction is not expensive*

CLOTHING . SHOES  
AND FURNISHINGS

People's Clothing Store

803 Eighth Street

# Plate Lunch and Sandwich Shop

JACK McCASKEY, *Proprietor*

— *Where Good Things to Eat Are Found* —

Under Boone State Bank & Trust Company



## Henry M. Welin

Res. Phones: 1048-R2 and 907 Office Phone: 1048-R1

**FUNERAL DIRECTOR**



**AMBULANCE SERVICE**

714 ARDEN STREET

BOONE, IOWA

## The Silver Bow

*has* **TWO STORES**

Each nicely located for  
your convenience. Either  
north side or south side.

— *Quality Meats Also* —

Mr. Longnecker: "Name the organs of the senses and their functions."

Harry Wells: "Well, you see with the eye organ, smell with the nose organ, hear with the ear organ, feel with the hand organ, and eat with the mouth organ."

★ ★ ★

Kenny Bricker: "I was much moved by a speech I heard yesterday."

Jane Sandbloom: "What was it?"

K. B.: "I parked opposite a hydrant and a cop told me to get the 'blazes' out of there."

Bank Cashier: "Good morning, what can I do for you?"

Yale Colle: "I want a check book for a lady that folds in the middle."

★ ★ ★

Jean Battey: "Tough about you having your car taken. Did you notify the sheriff?"

Clarence Starks: "He knows. He took it."

★ ★ ★

James Madison: "Did you see that nasty look that girl gave me?"

Marjorie Peters: "Ah, so that's where you got it!"

## THE TEMPLE OF ECONOMY

C. A. JOHNSON, *Proprietor*

**FANCY CHINA AND GLASSWARE**

813-815 Eighth Street

Boone, Iowa

## The Merchants' Messenger

*"The Little Paper with  
the Big Circulation!"*

Telephone: 336W

706 Eighth Street

ALBERT B. DEERING, M. D.

W. H. LONGWORTH, M. D.

FIRST NATIONAL  
BANK BUILDING

TELEPHONE: 51

HAWKEYE

LAUNDERERS & DRY CLEANERS

MEMBERS

National Association of Dyers and Cleaners  
OF THE UNITED STATES & CANADA

AND

NATIONAL LAUNDRY OWNERS' ASSOCIATION

Nadine: "Has horseback riding helped Mr. Clapp to reduce?"

D. Brumhall: "Oh, yes. He began falling off right away."

★ ★ ★

I. Wilson: "Hello, is this the Society for the Prevention of Cruelty to Animals?"

S. P. C. A.: "Yes."

I. W.: "Well, there's a book agent sitting in a tree in our front yard and he's got Touser so excited he can't eat."

Mr. Thorngren: "Say, do you happen to know how Thanksgiving originated?"

Bob Laub: "'Nope,' but I can 'dope' it out. It probably was started by parents whose sons had survived the football season."

★ ★ ★

Billidee: "I saw the doctor today about my loss of memory."

Jack: "What did he do?"

B.: "Made me pay in advance."

## FOX STUDIO PORTRAITS

*Are always high in quality  
and very moderate in price*

Have your photos made at

## FOX STUDIO

# HOLCOMB PRINTING COMPANY

— QUALITY PRINTING —

813 Keeler Street

Telephone No. 4

## PESTOTNIK BROTHERS OIL COMPANY

628 Marshall Street      West Third Street

BOONE, IOWA

OGDEN, IOWA

*Three good places to buy Gasoline and Oil*

— NO THIRD-GRADE GASOLINE —

## DR. C. L. UPDEGRAFF

*Specialist*

Eye, Ear, Nose & Throat

GLASSES FITTED

First National Bank Building

Bob Cooper: "Really, I don't know a thing about golf."

Joy Edmondson: "Neither do I. Why I don't even know how to hold a caddy. But I'd like to learn."

★ ★ ★

Miss Johnson: "What is your idea of a perfectly balanced meal?"

Student: "Peas on a knife."

★ ★ ★

Virginia R.: "How can I drive a nail without hitting my fingers?"

Robert Roman: "Hold the hammer in both hands."

Miss Norton: "Four plus one equals five, two plus three equals five."

Paul Anderson: "Just like all women, always changing their minds."

★ ★ ★

Gretchen G.: "Hear about 'Hod' Lyon? He swallowed a camera film."

Irene L.: "Gosh, I hope nothing serious develops."

★ ★ ★

Mr. Bechtel: "Name three articles containing starch."

Jimmy Younggren: "Two cuffs and a collar."

## Des Moines Valley Produce Company



817 Tenth Street

MELVIN JOSEPHSON

*President*

BENJAMIN JOSEPHSON

*Secretary-Treasurer*

## BOONE COUNTY ABSTRACT & LOAN COMPANY

Abstracts, Loans, Real  
Estate, and Insurance

New Mason Building

Boone, Iowa

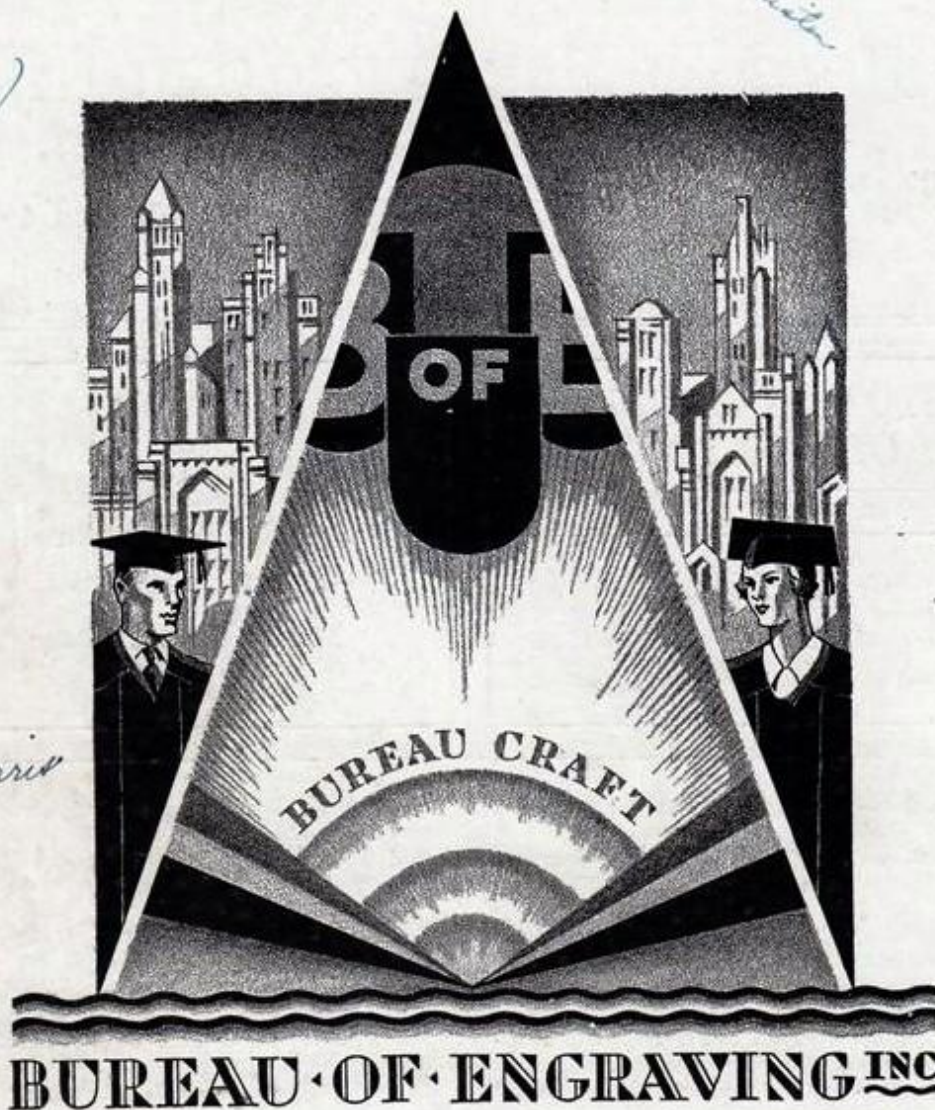
The  
Scrollette  
1934

*Norm "34"*

*Alfred Jensen "34"*

*Mary Jane Gustafson*

*Ardele Morris  
34*



*Mavis Lebo  
"34"*

SPARKLING INDIVIDUALITY—You find it in Bureau  
built Annuals. . . . Beauty of Design—Quality of  
Engraving—Distinction of Theme. . . . Don't merely  
dream of such an Annual. Let BUREAU  
CRAFT help you make it a Reality.  
We invite your correspondence. Let  
us tell you what BUREAU  
CRAFT is.

**Minneapolis**  
**MINN**

*Myra "34"*

*John "34"*

Bill Burke  
"34"

Jimmy Nelson

Jack Myers

Carroll  
Wilson

Lincoln  
"34"

Joe Elliott  
"34"

Jimmy  
Giles  
"34"

Norman  
Blair

Lida Ehlman  
"34"

Margaret Blanchard  
"34"

Harold Veale  
"35"

Ruth Roman  
"34"

Catherine Jones  
"34"

Della Adee  
"34"

Frances Lundigan  
"35"

Dorothy Rinehart  
"34"

Sala Lindmark  
"34"

Beryl Yeager  
"34"

Edna Mae  
1922  
"1" 1934

Myra Montan  
"34"

Helen Davis  
"34"

Georgia Rose Starr  
"Beaches" "34"

Laura N. Larson  
"35"

Irma Corbett  
"34"

Shirley  
"34"

Doris Anderson  
"Becky Davis" "35"

Bernice  
"35"

W. M. J. Jr.  
"35"

Margaret Pratt  
"35"

Virginia Ruchmeyer  
"34"

Delma Kitt  
"35"

Virginia Allen

Irene Peterson

Delma Nelson  
"34"

Lou Little  
"35"

Jenny Anderson  
"34"

Martha Corbett  
"Marty" "34"

Dorothy McElroy  
"Mae" "34"

"Margaret Pratt"  
Pratt "35"

Bettie Parrish  
"34"

Christine  
"34"

Lora Belle Bowman  
"34"

Isabelle Sanderson  
"35"

Margaret Christensen  
"36"

Margaret Corbett  
"34"

Other on  
"34"

Pauline Brown  
"35"

Margaret  
"34"

Margaret  
"35"

Dorothy Watkins  
"34"

Other on  
"34"