



Student Council

First Semester

Mary Lou Means.....

George Morris.....

OFFICERS

President

Secretary

Second Semester

Dan Enich

Harold Chinsted





Scroll Staff

Editor-in-Chief.....	Louise Dorrance
Assistant Editor.....	Margaret Cordts
Business Manager.....	Frances Anderson
Assistant Business Managers.....	Kenneth Burns, Maxine Pestotnik
Senior Editor.....	Gretchen Merrick
Activities.....	Ruth Wooten, Robert Collins
Athletic Editor.....	John Dyer
Artist.....	Dan Enich
Assistant Artist.....	Lee Weston
College Editor.....	Lois Stemple
Calendar and Jokes.....	Rose Davidson
Typists.....	Lorene Fellingham, Maxyne Wilson
Kodakster.....	Howard Lyon
Advisers.....	Mrs. Stevens, Mr. Hartley
Assistant Adviser.....	Miss Shaler

[APPRECIATION]

The Scroll Staff wishes to thank the following people who have shown a spirit of co-operation during the construction of this book: Virginia Kelley, Mary Jane Gustafson, Brownie Knezevich, Mr. Daehler, Delores Stark, Helen Jackson, Jack Tillson.



Bumble "B" Staff

Faculty Adviser.....Miss Dagmar Hansen
 Business Adviser.....Mr. Longnecker
 Managing Editor.....Jeanette Moore
 Assistant Editor.....Catherine Cooper
 Business Manager.....Mary Jane Gustafson
 News Editor.....James Fox
 Make-up Editor.....Cordelia Canakes
 Sports Editor.....Gerald Shadle
 Humor: Owen Weeks; Exchange: Eloise Anderson; Feature Writers: Dorothy Turpin,
 Marguerite Paulson, Sherrill Brown, Alice Rice, Joy Edmonson, Herbert Erbe.
 Advertising Manager—Rovena Conn.
 Copy Manager—Geraldine Zahn; Bookkeeper—Robert Weeks.
 Solicitors—Louise Flick, Myrle Jane Stowe, Wesley Herrald, Alice Austin, Kathryn
 Canakes, Marion Wilson, Robert Herman, Richard Brumhall, Edward Cordts,
 Faye Fitzsimmons.
 Typists—Jean Bennett, Delores Starke.
 Reporters—Enid Nelson, Paulina Mills, Mable Bolitho, Ruth Thorngren, Delma Witt,
 Marie Lebo, Nina Duckworth, Junior Harvey, Miriam Evans, Eila L. Breedlove,
 Hilda Huddleson, Lucille Shaw, Charlotte Stark, Dorothy Starke, Mary Lyon,
 Eleanor Shaw.
 Junior College Reporters—Dorothea Moerke, Laverne Adix.

Junior High Staff

Adviser—Miss Emelia Severeid.
 Editor—Junior Savereid.
 Reporters—June Witt, Jayce Starke, Alice Runyan, Bernice Davis, Dwight Mor-
 rison, Frances O'Connell, Clyde Sparks, Francis Lindell.



Back Row: Moore, Merrick, Cooper, Kirk.
First Row: Anderson, Weeks, Tillson, Lebo, Alexander.

Quill and Scroll

Quill and Scroll, the national honorary society for high school journalists, has chapters in nearly every state in the Union, and represents most of the high schools in the country which are outstanding in the quality of their journalistic work.

Among the important achievements of this society are: sponsoring national contests in twenty-five fields of creative work; conducting surveys in the field of high school journalism with the purpose of improving the quality of work; organizing state press associations; criticizing publications; and publishing a magazine containing practical information concerning every phase of publication work. Famous educators contribute to the columns of this magazine, and America's most outstanding journalists endorse the program of this society.

To become members of Quill and Scroll, students must be of at least junior standing; they must have done superior work in some phase of journalism; they must be in the upper third of their class in scholastic standing; and they must be approved by the national secretary-treasurer.

Those who have been taken into the Boone chapter of Quill and Scroll during the year 1932-1933 are: Joyce Lees, Genevieve Cole, Mildred Nelson, Dorothea Fitzgerald, Lillian Bowman, Harlan Weeks, Owen Weeks, Elinor Doner, Jeanette Moore, Catherine Cooper, Gretchen Merrick, Kathryn Lindbloom, Donald Lebo, Eloise Anderson, Gerald Shadle, Marguerite Paulsen, Cordelia Canakes, Sherrill Brown, Mary Jane Gustafson.

At the end of this school year a Quill and Scroll banquet will be held for the purpose of initiating the students who have done outstanding work on this year's Scroll staff.



Hi-Y Club

First Semester	OFFICERS	Second Semester
Boyd Pestotnik.....	President	Schuyler Wheeler
Owen Weeks.....	Vice President	Sherrill Brown
Verne Harrigan.....	Treasurer	Kenneth Nyman
John McLeod.....	Secretary	Clifford Nygren
Jack Ruschmeyer.....	Program Chairman	Robert Markman
Laverne Heaps.....	Membership Chairman	Kenton Cox
Weldon Brown.....	Social Chairman	Arley Edgerton
Mr. Longnecker.....	Sponsor	Mr. Longnecker

The Boone Hi-Y Club was very successful in carrying out its true objective to help create, maintain, and extend throughout the school better standards of Christian character.

Throughout the year the usual weekly meetings were held at the Y. M. C. A., and the programs which were arranged by the boys were very educational as well as entertaining.

Five boys from the Boone Club attended the State Older Boys' Conference held at Ames, November twenty-fifth to November twenty-seventh. Special feeds were held throughout the year, and an assembly featuring Mr. Cunningham, Y Director at Ames, was sponsored.

Music in Boone High

■

Reaching a higher standard than ever before, the music department of Boone High gave the students and alumni excellent cause to be proud of it. The department is divided into three main divisions: the band, the orchestra, and the glee clubs.

THE BAND

Boone High was indeed lucky to possess three bands this year, a girls' band of eighteen members, a special basketball band of thirty picked players, and the main band.

The girls' band was a new project in Boone High, which proved very successful, as well as very beneficial to all of its members.

Due to lack of seating space, Mr. Fields found it necessary to reduce the personnel of the band playing at the basketball games. Thirty of the most skilled members were eligible.

On the birth anniversary of John Phillip Sousa, the main band presented an unusually fine program consisting of numbers composed by Sousa. This band was good this year, and everyone should be very proud of this fine organization.

THE ORCHESTRA

Not only did Mr. Fields turn out an excellent band, but the orchestra proved equally as successful. The orchestra was the best which has ever represented the Red and Green. They played at the various activities of the school, such as plays, assemblies, and other outside activities. The orchestra is very essential as it gives those who are musically inclined an opportunity to study advanced music. Not only was the orchestra as a whole very good, but it contained many members capable of fine individual performance.

THE GLEE CLUBS

This year the glee clubs were unusually large. A membership of thirty-six for each club was selected from the many who tried out.

A combination of the boys' and girls' glee clubs gave an assembly program for Junior and Senior High. The main feature of the program was the singing of songs a capella. The recital was very well given and enjoyed by everyone. In the spring, another assembly was much enjoyed. During the program the girls' double quartette offered several selections.

The Glee Clubs presented a program over radio station WOI, on March 6. Nearly sixty students participated. Several instrumental solos and selections were given. These groups were directed by Nate Fields and Miss Helen Sievers. Responses were received concerning the program and everyone complimented the work done.

These groups also appear annually at the Baccalaureate and Commencement programs.

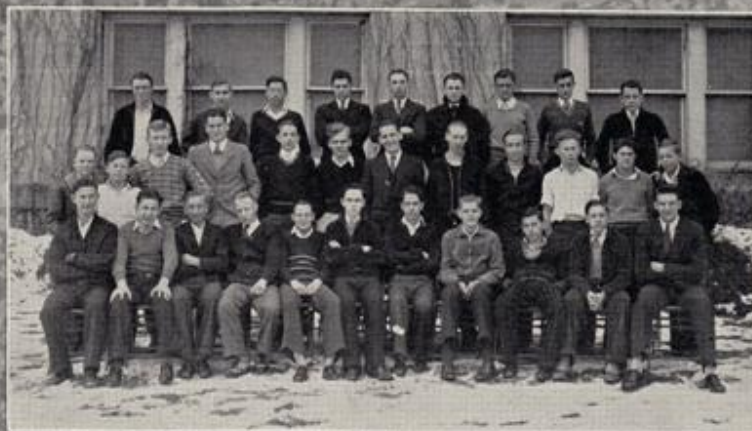


ORCHESTRA



BAND

ACTIVITIES



Boys' Glee Club



Second Glee Club



First Glee Club



EDMONDSON

JACKSON

SCHARNWEBER

Declamatory

This year the try-outs for the declamatory contest were held before senior high assemblies. Judges for these preliminary contests were Miss E. Harvey, Miss Harris, and Miss Handy.

The students who won in these try-outs gave their selections in the S. L. Moore contest on Tuesday evening, February 14.

In the oratorical group, John Wilson, Margaret Cole, and Charles Scharnweber presented selections. The winner, Charles Scharnweber, gave "The Great Crucifixion".

Helen Jackson's winning selection in the humorous division was "The Mysterious Baby". Other contestants in this section were Audrey Crawford, and Wallis Gibson.

In the dramatic class, Joy Edmondson won first place. Her selection was "The Truly Mother". Other students competing in this group were Jeanette Moore, Mary Lou Means, and Nina Duckworth.

The three winners in the S. L. Moore contest competed with pupils from several other schools in the preliminary to the State Series at Webster City, March 1. Our contestants were very successful, winning two second places and one first.

Joy Edmondson, because she won first in the dramatic section at Webster City, again competed at Madrid, March 17, in the Sub-District contest in the State Series. She won second place in her section in this contest.

There was much enthusiasm and interest shown in the Declamatory work this year. Much of this was due to the influence and industry of Miss Sybil Lamb who had charge of this work.



Masque and Buskin

First Semester	OFFICERS	Second Semester
Mary Lou Means.....	President	Clifford Nygren
Gerald Shadle.....	Vice President	George Morris
Nan Reid.....	Secretary and Treasurer.....	John McLeod
Miss Eloise Harvey.....	Sponsor	Miss Eloise Harvey

The Masque and Buskin Dramatic Club had, this year, an interested and active membership of sixty students. At an early meeting in the fall, a number of new members were initiated.

Varied and instructive programs were given at the bi-weekly meetings of the club. At one time, a collection of three short plays was given. Another interesting meeting included a paper on "The Three Barrymores". The Christmas play, "Trials of Christmas Shopping", was very successful and much enjoyed by the membership. The programs throughout the first semester were made more entertaining by numerous readings and musical selections.

The second semester calendar of the club was unusually full. During this semester, Masque and Buskin joined with the Boone High Players in producing a public play, "The New Co-Ed", which was very successful. Two outstanding meetings of the spring semester were those at which outside speakers were secured. At one meeting Joe Irwin, a former member of Masque and Buskin, read a Russian play. Mrs. Douglas Bragdon spoke on "The Little Theatre Movement" at another meeting.

Each year the dramatic clubs present assembly plays. The one chosen by Masque and Buskin was a one-act comedy, "An Amateur Hamlet". This play was an exceptionally successful presentation. Each member of the cast did very good work, and much credit is due the cast and the coach, Miss Eloise Harvey.

THE CAST

Sue Ann Carter.....	Dorothy Hilts	Jack Trent.....	Bill Henry
Mrs. Carter.....	Ruth Thorngren	Dr. Wellington.....	Kenneth Burns
Mr. Carter.....	Loren Shaeffer	Mrs. Trent.....	Mable Bolitho
William Carter.....	John Wilson	Hilda.....	Doris Edson



B. H. S. Players

First Semester	OFFICERS	Second Semester
Myrle Stowe.....	President	Ruth Elaine Shadle
Grace Jane Warner.....	Vice President	Norman Blaess
Owen Weeks.....	Secretary and Treasurer.....	Francis McKay
Miss Beulah Harris.....	Sponsor	Miss Beulah Harris

The initiation ceremony of the B. H. S. Players Dramatic Club this year was very clever and showed the dramatic talent of new members. Mary Jane Gustafson's imitation of Frankenstein was excellent. Francis McKay's impersonation of Paderewski was also outstanding.

Mr. LaVerne Adix gave a very thorough and interesting speech on "The History of Drama" at the October meeting. An informal talk on puppets, which she illustrated by executing various maneuvers with her marionette, was given by Ruth Elaine Shadle at one November meeting. Because music is so closely connected with drama, another meeting was devoted to music alone. Two talented trios appeared: Dorothy and Delores Stark and Jean Ward, who gave vocal selections; and Robert Updegraff, Gerald Meyermann, and Robert Berglund with their saxophones. As a finishing touch, Francis McKay favored the group with a number of piano solos.

Members of the club presented several different plays, supervising them themselves. At Christmas time, a few scenes from "Bird's Christmas Carol" were presented. In another meeting, Joy Edmonson, Viola Peters, and Morris Case presented a one-act comedy entitled "Farewell, Cruel World".

Still another program that deserves mention was a variety program presented in March. Lucille Blanchard gave a tap dance, Isabel Sandeen read some clever comic sketches, and Paulina Mills played selections on her violin. To conclude the program, Justin Postle at the piano gave his interpretation of various popular songs.

Miss Beulah Harris, sponsor, chose "Elmer" for the B. H. S. Players' annual assembly play. The play was based on the ways in which Elmer succeeded in making the family recognize how Susan was being abused.

[Continued on page 48]



"The New Co-ed"

Annually, the B. H. S. Players and Masque and Buskin Dramatic Clubs unite in presenting a public play, which is coached by the sponsors, Miss Beulah Harris and Miss Eloise Harvey.

This year the play, which was given February 4, 1933, was "The New Co-ed". The setting is Mrs. Rice's boarding house, where a few of the students are assembled when Miss Letty Willis, the new student from the country, arrives, surprising everyone by her chic appearance.

Letty Willis becomes very popular with all her classmates except one, Estelle Doolittle. Estelle, jealous of the newcomer's charm, plans to ruin Letty's reputation. Her chance comes when the group is gathered for a Hallowe'en party. Estelle steals a ring, making matters appear as though Letty is the guilty one.

The plot is finally discovered, and the ring returned to its rightful owner by Punch Doolittle, who calls himself the "detective". Thus, Punch proves to Madge his sweetheart, that he is useful and also turns everything "sunny side up" for Letty and the hero, Dick Bradley.

This play was very successful, and was well received by the audience. Each character was excellently portrayed, but Ruth Elaine Shadle and Francis McKay deserve special mention.

THE CAST

Madge Stephens, Letty's friend.....	Ruth Elaine Shadle
Estelle Doolittle, a spoiled beauty.....	Ednamae Schmidt
Miss Rice, the landlady.....	Louise Dorrance
May } college chums {	Ruth Anne Baker
Rose }	Dorothy Stark
Grace }	Grayce Nelson
Dick Bradley, athletic star.....	Kenneth Mann
Punch Doolittle, mischievous, idle brother of Estelle.....	Francis McKay
Jim Young, a neutral, and coach of the dramatic club.....	Sherrill Brown
George Washington Watts, porter.....	Wallis Gibson



Social Science Club

First Semester	OFFICERS	Second Semester
Frank Miller.....	President	Gretchen Merrick
Ila Morgan.....	Secretary	Nick Knezevich
Al Gerken.....	Treasurer	Schuyler Wheeler
Miss S. Hansen.....	Sponsor	Miss S. Hansen

Members of the Social Science Club this year were more than delighted with the programs given at the bi-monthly meetings.

At the first meeting, old members gave brief talks on the purposes and past accomplishments of the club.

In November, two timely programs were enjoyed by those in attendance. Reports on the first election were given at one meeting, and music and papers in keeping with Thanksgiving were offered at the second meeting. In addition, the club was invited to attend a political meeting sponsored by the Junior Chamber of Commerce.

The December meetings maintained the usual high standard. Mr. Dan Goodykoontz, local lawyer, gave an accurate and interesting summary of the general election; and at the second gathering, members gave humorous impromptu speeches.

February was an eventful month that will not be forgotten by the Social Science Club. In a patriotic program, the birth anniversaries of Washington and Lincoln were observed; and in a second meeting, William H. Bennett, the county auditor, gave an illustrated lecture.

Although the remainder of the meetings deserve mention, suffice it to say that they were just as successful and interesting as the first ones, because of the untiring efforts of the adviser, Miss Stena Hansen.

ACTIVITIES



Normal Training Club

First Semester	OFFICERS	Second Semester
Marjorie Wilson.....	President	Lucy House
Ardelle Morris.....	Vice President	Irene Peterson
Emma Moerke.....	Secretary	Thelma Thompson
June Wade.....	Reporter	Evelyn Murken
Miss McEwen.....	Sponsor	Miss McEwen

The Normal Training Club is organized for the purpose of furthering social and educational interests among that group of students who are planning to enter the teaching profession. Questions and problems of interest pertaining to the teaching profession, which for lack of time can not receive attention in the regular class recitation, are studied and discussed. A few of the special meetings for this year have been: A talk by the County Superintendent, Miss Boyd, on Rural School Problems; the Christmas dinner and party held at the Y. W. C. A.; and the annual dinner and program for the mothers given in the spring.

B. H. S. PLAYERS — [Continued from page 45]

THE CAST

Elmer Collier.....	Junior Harvey
Susan Collier.....	Lucille Shaw
Jeanne Collier.....	Elnora Lucas
Janie Collier.....	Geraldine Zahn
Miss Pinney.....	Jean Battey
Mrs. Collier.....	Ruth Rice
Fannie Biele.....	June Wade
Hubert Brown.....	Russell Rosengreen
Russell Jameson.....	Tommy Gardiner
Pansy.....	A dog



Science Club

First Semester	OFFICERS	Second Semester
LaVerne Heaps.....	President	Jack Ruschmeyer
Arley Edgerton.....	Vice President	George Montgomery
Owen Weeks.....	Secretary	John Wilson
Kenneth Nyman.....	Treasurer	Sherrill Brown
H. L. Cunningham.....	Sponsor	H. L. Cunningham

Boys interested in science have the honor of belonging to the Science Club which devotes its time to the study of the newer scientific inventions and developments.

New members were initiated in an impressive ceremony in charge of Sherrill Brown, Arley Edgerton, and John Gustafson. Throughout the year various members of the club demonstrated certain scientific facts, among which the most important were: An explanation of the electrolysis of water, the use of an arc light, the use of a short wave broadcasting unit, a demonstration of liquid air, electricity and magnetism, transformers, and the enlargement of a photograph.

The meetings, which were entertaining as well as educational, were thoroughly enjoyed by the members.



Commercial Club

First Semester	OFFICERS	Second Semester
John McLeod.....	President	Clifford Nygren
Al Gerken.....	Vice President	Al Gerken
Madonna Cole.....	Secretary	Fern Lindmark
Clifford Nygren.....	Treasurer	Geraldine Zahn
Miss Nunamaker.....	Sponsor	Miss Crawford

The Commercial Club has endeavored this year to include the three phases of commercial work in its program: Clerical, secretarial, and bookkeeping. With these three types of work in mind the program committee has planned programs of unusual benefit to the members. The members themselves conducted many of the programs, and a number of interesting talks were given by outside speakers.

Mrs. Kenneth Goodrich spoke on secretarial work at one meeting. At another time, Mr. Dan Goodykoontz, a Boone attorney, talked to the club about the various positions in the stenographic field. An interesting and helpful talk was given by Miss Vava Giltner, chief operator for the Bell Telephone Co. in Boone. Her subject was "How to Hold a Position".

Everyone in the Commercial Club this year enjoyed it a great deal, and each endeavored to make the club interesting as well as instructive.

Miss Anna Crawford and Miss Beulah Nunamaker are the sponsors of this very successful club.