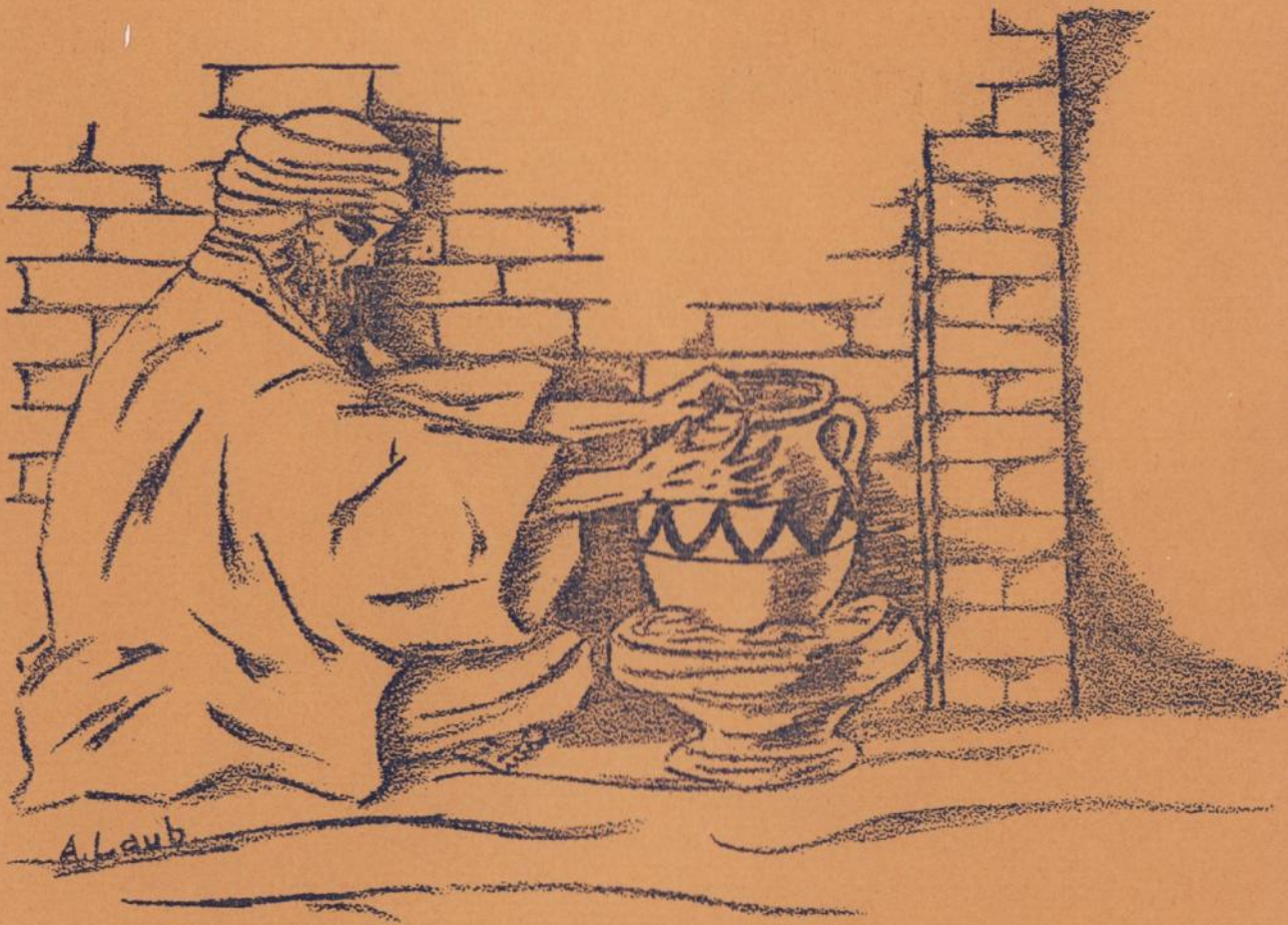


JUNIOR COLLEGE



JUNIOR COLLEGE

RUBY ALLEN

Liberal Arts

Orchestra 2; Y's Co-Eds 1-2; French Club 2.

Ruby is so very nice,
Conscientiousness is her only vice.

JOHN BARGER

Liberal Arts

Associated Men Students 1-2; French Club 1.

His little lassie said he was shy,
But I've not found him so—not I!

DONALD BASS

Liberal Arts

Male Chorus 2; "Lady Windemere's Fan".

The chief complaint of this rustic lad
Is "The farmer's condition is very sad"!

PHYLLIS DAVIDSON

Liberal Arts

French Club 1-2, Vice President 1; Scroll 1;
Science Club 2; Y's Co-Eds 1-2, President 2.

She's happy and pretty, she's clever and gay;
She works when she should, then is ready for play.

JOHN DYER

Liberal Arts

Male Chorus 2; Associated Men Students 1;
"The Swan".

Silent, modest, and reticent,
And never other than innocent.

DARIUS FALLSTROM

Liberal Arts

Basketball 1-2; Male Chorus 2; Associated Men Students 1.

This pleasant fellow puts his all
In the great sport called basketball.

DOROTHEA FITZGERALD

Liberal Arts

Scroll 2; Orchestra 2; French Club 1; Science Club 2; "Flyin'"; Y's Co-Eds 1-2.

She's busy, morning, noon, and night,
Happy, cheerful, always bright.

MAURICE HEALY

Liberal Arts

French Club 1-2; Associated Men Students 1;
"The Swan".

In complicated explanations does this lad
abound;
A way out of verbosity, it surely could be found.

GEORGE HIGGINS

Liberal Arts

Debate 1-2; French Club 1; Associated Men Students 1; "Flyin'"; "The Swan".

Tirelessly I speak; let the world keep me in sight,
For in my own opinion I am always right.

LOREN LAIR

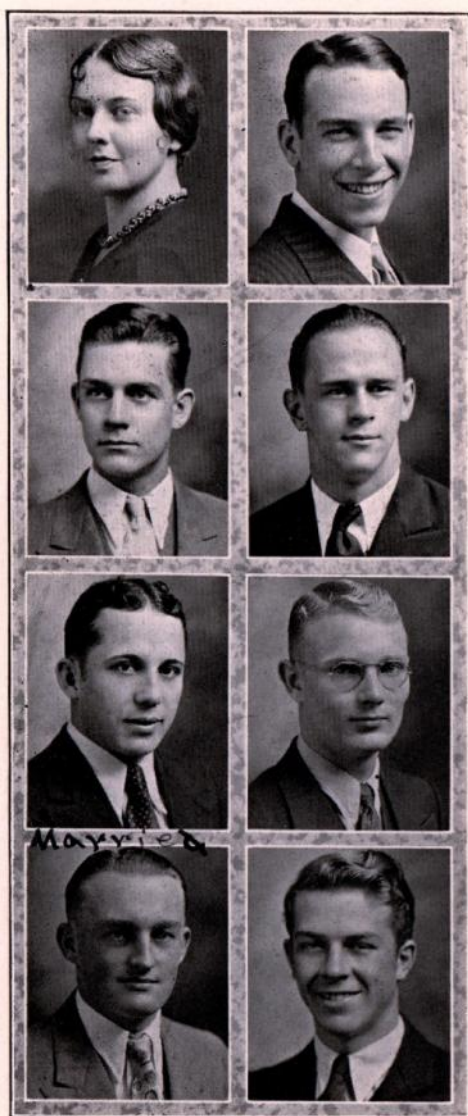
Liberal Arts

Debate 1-2; Basketball Manager 2; French Club 2; Associated Men Students 1; "Pals First"; "The Swan".

Master of polemics—that great art—
In all disputations he has a part.



JUNIOR COLLEGE



IRMA NELSON

Liberal Arts

French Club 1-2; Science Club 2; Y's Co-Eds 1-2; Program Chairman 2.

Her heart is reached by the smoothest path,
And it takes a lot to incur her wrath.

RAY PETERSON

Liberal Arts

"Pals First"; Associated Men Students 1.

He thinks he has a brilliant wit,
Maybe he has—a little bit.

CRAWFORD RUSSELL

Liberal Arts

Basketball 1-2; Science Club 2; Associated Men Students 1.

He's always level-headed, courteous and kind,
He speaks with rare acumen the thought
within his mind.

FRANCIS SMITH

Liberal Arts

French Club 1; Treasurer 1; Associated Men Students 1.

Milton is old, and Danny was bored,
And that is the reason he sonorously snored.

DEAN STANDLEY

Liberal Arts

College Vice President 1; Basketball 1-2; French Club 1; Science Club 2; Associated Men Students 1; Male Chorus 2.

He's a studious chap with a dignified air,
And if duty calls he's always right there.

FRANK SUNSTROM

Liberal Arts

Basketball 1-2; French Club 1; Associated Men Students 1; Male Chorus 2.

Of all our brilliant collegiate boys,
"Sankie" is known to create the most noise.

JAMES WESTER

Liberal Arts

Basketball 1-2; Associated Men Students 1; Vice President 1; "Pals First".

Jimmy is a very jovial sort,
Always ready with a quick retort.

RICHARD WILLIAMS

Liberal Arts

College President 2; Debate 1-2; Orchestra 2; Basketball 1-2; French Club 1; Associated Men Students 1; "Pals First"; "Flyin'"; "The Swan".

The great mind to one objective itself does
not confine,
But lays hold on all about it, and conquering
says, "It's mine".

College Officers and Clubs

The collegians met at the beginning of the school year and elected the following officers:

President	Richard Williams
Vice President	La Vern Adix
Secretary and Treasurer	Jean Wissler

Committees were later appointed to take charge of the financial and social affairs of the junior college. A Science Club was organized at the first of the year,

(Continued on page 78)



Virginia
Ashley
Nov. 1935.

JUNIOR COLLEGE



Science Club



French Club





ADIX

HIGGINS

DODGE

Debate

The question used in junior college debate circles this year was one that was especially interesting and debatable, considering the present economic condition of the United States. It read as follows: "Resolved: that the several states should enact legislation providing for compulsory unemployment insurance". Because of the difficulty of obtaining critic judges and because there is a good deal of criticism of local judges, most of the scheduled debates were non-decision ones. These proved to be very successful, but were the cause of Boone's ineligibility to enter the state debate tournament at Iowa City. Each junior college, to be eligible for the state tournament, must have competed in a specified number of decision debates, and Boone could not meet the requirements. Dual decision debates were held during the season with Fort Dodge, Mason City, and Webster City.

The Boone squad, composed of Richard Williams, Loren Lair, George Higgins, LaVern Adix, and Kenneth Dodge, was coached by Dean Thorngren. All of the men were experienced debaters and, consequently they were able to do some splendid work this year.

JUNIOR COLLEGE OFFICERS AND CLUBS—(Continued from page 76)

but disbanded at the close of the first semester. The French Club and "Y's Co-Eds" were also re-organized and provided additional social life for the students. One party was held each month during the school year. As a whole, these parties were well attended, and the diversified forms of entertainment succeeded in maintaining the interest of the students in social affairs.

One unique meeting of the French Club was held in February at the Y. W. C. A. in the form of a French banquet. "Bien entendu", everything was in French.

(Continued on page 81)





"The Swan"

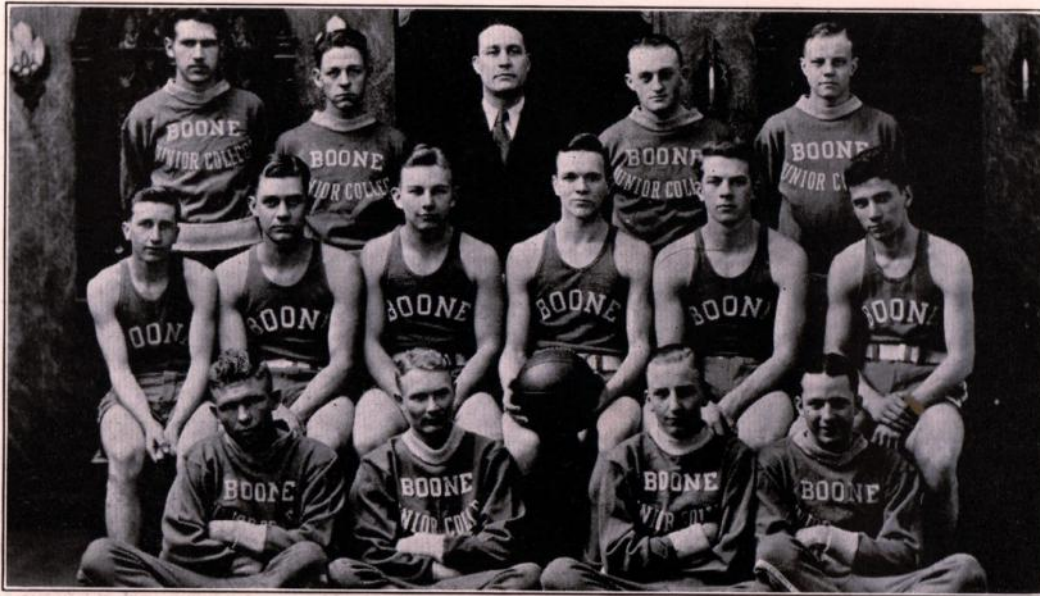
Far from ordinary in lines and setting was "The Swan", a romantic comedy, presented by the junior college. The plot of the play is based on the frantic attempts of European royalty to regain their thrones at the expense of all happiness. Sacrificing her love for Agi, Alexandra, "The Swan", as she has always been called because of her proud beauty, accepts Prince Albert, an heir-apparent.

The experienced members of the cast maintained their traditional standards. Those who made their first appearance in this play showed the results of original interpretation plus excellent coaching.

THE CAST.

Dr. Nicholas Agi	-----	Walter Dyer
George	-----	George Higgins
Arsene	-----	Forest Reed
Princess Beatrice	-----	Ruth Williams
Alexandra	-----	Greta Peterson
Father Hyacinth	-----	La Verne Adix
Symphorosa	-----	Lois Stemple
Prince Albert	-----	Richard Williams
Colonel Wunderlich	-----	Kenneth Dodge
Count Lutzen	-----	Maurice Healy
Caesar	-----	Loren Lair
Maid	-----	Jean Wissler
Princess Dominica	-----	Catherine Birmingham
Countess Erdely	-----	Henrietta Roberts
Ladies-in-waiting	-----	{ Henrietta Roberts
		{ Jean Sandell
Lackeys	-----	{ Adrian Clark
		{ Austin Miller
Hussars	-----	{ Frederick Schroeder
		{ John Dyer
Coach	-----	Miss Lamb





Back row: Wooten, Martinson, Coach Evans, Wester, Hartquist. Center: Reid, Russell, Fallstrom, Dyer, Williams, Canakes. Front row: Nordholm, Sunstrom, Beiter, Stanley.

J. C. Basketball



Coach Larry Evans was very well pleased with the junior college basketball season. Larry's personality was a strong factor in determining the success of his splendidly coached team. He is a coach that has the ability to make much of little, although his material this year was far more promising than that of any previous year.

The junior college Bears enjoyed the most successful basketball season in the history of Boone Junior College. Playing a schedule of eleven games, they were defeated only twice—at the hands of Ft. Dodge and Ellsworth Junior Colleges, respectively. The Bears were not allowed to enter the state tournament because of the fact that only two teams could represent the Hawkeye conference. Boone finished high in the conference but was not allowed to enter the tournament because it had not played as many conference games as had Mason City and Ft. Dodge. However, it is hoped that by next year the conference may be split, and thereby allow a more equal representation.

(Continued on page 100)





Girls' Basketball

The junior college girls' basketball team was later than usual in getting organized this year. Nevertheless, it had a very successful, if short, season. As has been the custom here, only inter-class games were played. Practice was held each Wednesday after school, and games were played with the high school class teams. The girls also participated in the girls' basketball tournament which was held during the last week of April. The squad, selected by Miss Parks, consisted of the following: Madeline Anderson, jumping center; Violet Smiley and Margaret Potter, running centers; Ruby Allen, Ida Mae Mosher, and Lois Stemple, guards; and Romona Swan and Henrietta Roberts, forwards.

The Co-Eds were represented, also, in the annual high school swimming demonstration and the May Fete.

JUNIOR COLLEGE OFFICERS AND CLUBS—(Continued from page 78)

The following excellent menu was provided:

Escalope des pommes de terres

Les petits pois

Le gateau

Viande de pain

Salada aux fruits

Les petits pains

Les bonbons

Le Cafe

After the banquet the members enjoyed a very instructive program. The numbers were as follows:

- | | |
|---|---------------|
| Le maitre de ceremonies..... | Jack Tillson |
| 1. Pourquoi je parle allemande et Latin dans la classe de
français | M. Healy |
| 2. Pourquoi je desire epouser un duc..... | L. Stemple |
| 3. L'etudiante francaise | C. Birmingham |
| 4. Les chansons francaises | J. Sandell |
| 5. Vive le francais | A. Clark |



Junior College Society

JUNIOR COLLEGE PICNIC

The initial social function of the junior college was a picnic held on September twenty-fourth at the Des Moines Y. M. C. A. Camp. Classes were dismissed at three o'clock in the afternoon, and the students left by auto for the "Y" camp. A baseball game was the main event of the afternoon, although a few tennis fans made use of the splendid courts. After the sports, the social committee served a picnic supper. Phyllis Davidson was in charge of the arrangements for this affair.

DANCING PARTY

The high school gymnasium was the setting for a junior college dance on October sixteenth. Each student was allowed to invite a guest, and in this way a larger group was possible. Many "mixers" were attempted but weren't so successful, as most of the gentlemen preferred to remain with one partner during the evening. Fred Mauck's orchestra provided music for the dancing.

HARD TIMES PARTY

The depression was very much in evidence on the evening of November eleventh, when the collegians met for a "hard times party". Jack Tillson, dressed as a "sweet, young thing", quite captivated the hearts of all the young men present. He and Dorothea Fitzgerald received prizes for the most original costumes. Bunco cards, and dancing were the forms of entertainment for the evening. The social committee was on hand with appropriate refreshments at the close of the evening. This party was pronounced a great success by everyone that attended it.

ALUMNAE DANCE

During the Christmas vacation, many junior college alumnae returned to their homes here. The collegians thought it much in order to hold a dance in honor of these former students. After a charity game at the high school on December twenty-second, the gym was cleared and a dance held, which was enjoyed by a large number of alumnae.

LEAP YEAR PARTY

The Co-Eds were hostesses at a covered dish supper on February twenty-sixth. The meal was served cafeteria style in the domestic science room. Most of the students then attended the Boone-Oskaloosa basketball game in the gymnasium, while the poor, over-worked committee washed the dishes and prepared the room for dancing. For the remainder of the evening card-playing and dancing were the chief diversions, although the students condescended to spend about a half-hour in playing old fashioned games. The chaperones for this affair were Dean Thorngren, Mr. and Mrs. Welker Bechtel, and Miss Johnson.

ACTIVITIES OF THE Y's CO-EDS.

"A "get acquainted" party was the first activity of the Co-Eds this year. At this function the freshmen were guests of the sophomores. This stimulated an interest in the club, and made possible a hundred per cent membership. Luncheons were held alternately with the evening meetings, although the former proved to be more popular with the girls. At these noon luncheons, several interesting talks were given, but often the entire time was devoted to round table discussions. The officers of the club for the year are:

President	Phyllis Davidson
Vice President	Jean Sandell
Secretary	Greta Peterson
Treasurer	Lois Stemple
Social Chairman	Irma Nelson



JUNIOR COLLEGE



Glee Club



Y's Co-eds



?



Science Club



Co-eds

and



"Eds"



Trio



Yell Leaders



JOHN S. CROOKS
REAL ESTATE & INSURANCE
301 First Nat'l Bank Bldg.

PAUL BARTH
DENTIST
405 First Nat'l Bank Bldg.

C. C. OLSON INSURANCE
AGENCY

FOR ANY KIND OF INSURANCE
Anything Worth Having is Worth Protecting
Reliable Companies—Dependable Service
Prompt Payment of Losses
Free Consultation
Office Room 6 Phone 63W
City Trust & Savings Bank Building
Boone, Iowa

C. A. KING

DENTIST
Over Denecke's Store
Office Phone 121

JUNIOR COLLEGE BASKETBALL—(Continued from page 80)

Captain Dyer's consistency in controlling the tip-off, and also his fine leadership made him one of the most valued players on the squad. Reid and Canakes, stellar forwards, accounted for the majority of the three hundred two points that the Bears piled up during the entire season. This alone pleased Coach Evans as much as the number of games won.

The season's record is as follows:

Boone 26.....	Alumni 16
Boone 31.....	D. M. Catholics 16
Boone 24.....	Marshalltown 9
Boone 27.....	Ft. Dodge 41
Boone 35.....	Ellsworth 11
Boone 31.....	Webster City 16
Boone 30.....	D. M. Catholics 4
Boone 15.....	Ellsworth 23
Boone 21.....	Marshalltown 10
Boone 27.....	Ft. Dodge 14
Boone 26.....	Webster City 18

Travel by Motor Coach



Four daily transcontinental schedules to solve your vacation travel problems. Swift, dependable, inexpensive and comfortable service to America's many Beauty Spots and Recreation Centers.

"Buses Everywhere"