

Scroll

"Topsy"
"CORAL"



FRANKIE

"SALLIE" "CHUCK"
EX LIBRIS

Miss Paula Stolte

Miss Paula Stolte

Jimmy

"MARGE"

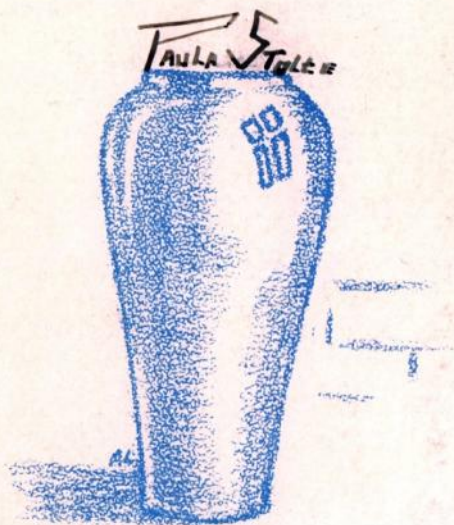
"LUCY"
"JOHNIE"

"MARIANN"

"CONNIE"
"JOHNIE"

THE SCROLL

• 1932 •



"Mariani" and "Jerry"

Published by
THE SENIOR CLASS

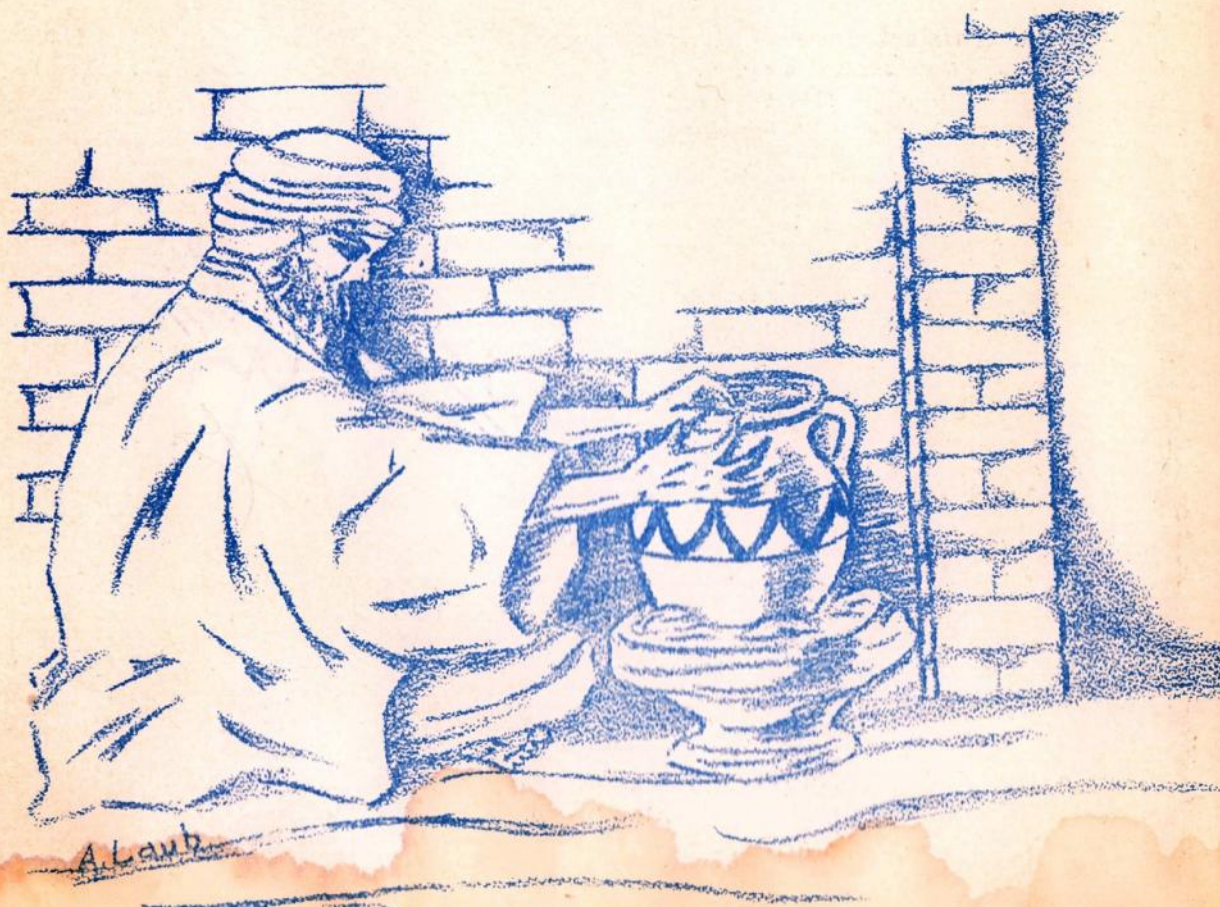
Boone High School

"1932"

F O R E W O R D

We, the 1932 Scroll Staff, have attempted to record in these pages the events which have moulded our school lives, fashioning the Scroll with as great care as a potter might his multi-colored urn.

WE HAVE SINCERELY STRIVEN
TO CREATE A WORK WHICH
WILL ENDURE AS THE VASES
AND URNS, MOULDED BY ANCI-
ENT POTTERS, HAVE WITHSTOOD
THE RAVISHES OF TIME, GIVING
PLEASURE TO THE BEHOLDER.



DEDICATION

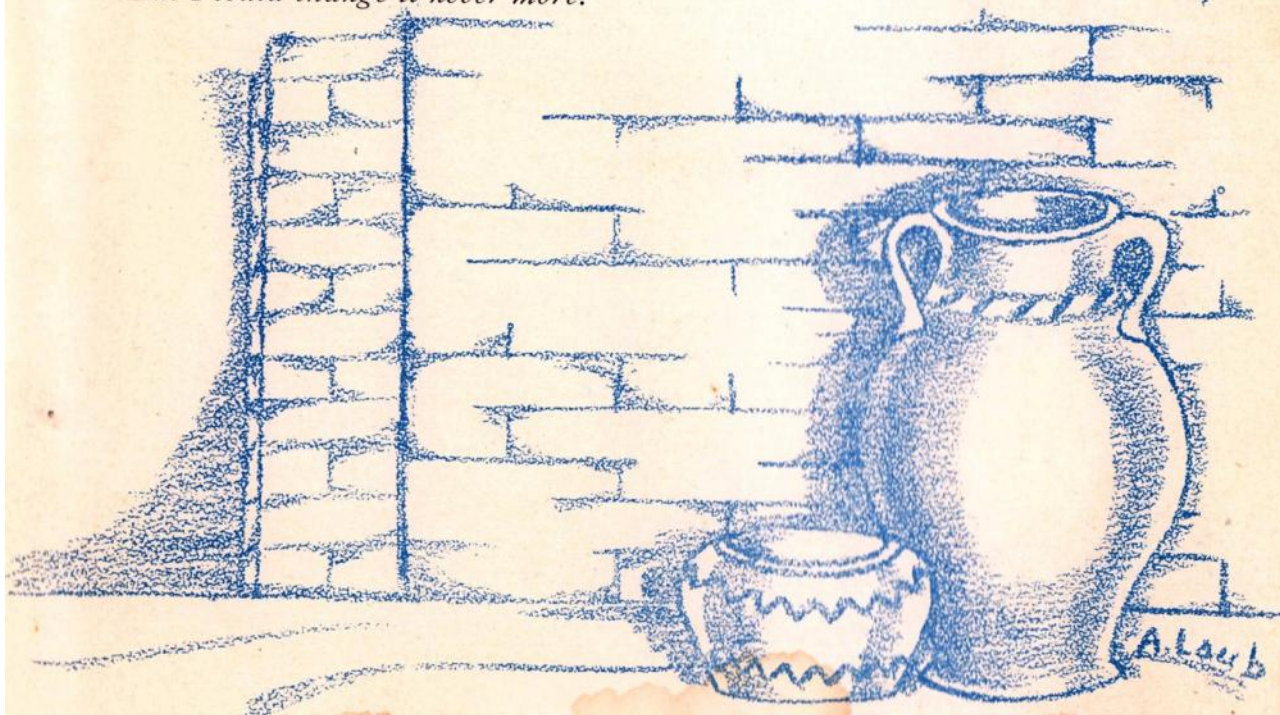
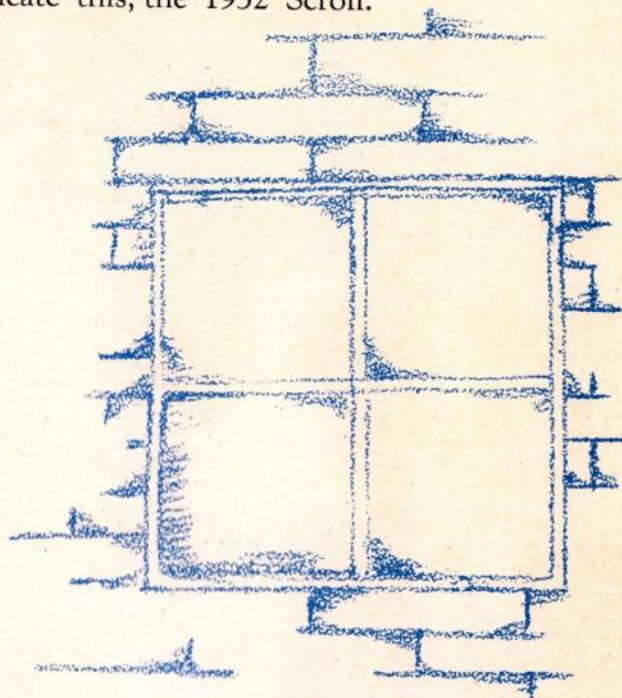
To the teachers of B. H. S., who mould the plastic material of the minds and spirits of the students into the final form of worthwhile, beautiful adulthood, we sincerely dedicate this, the 1932 Scroll.

*I took a piece of plastic clay
And idly fashioned it one day,
And, as my fingers pressed it, still
It moved and yielded to my will.*

*I came again when days were past;
The bit of clay was hard at last.
The form I gave it still it bore,
But I could change that form no
more.*

*I took a piece of living clay,
And deftly formed it day by day,
And moulded with my power and art,
A young child's soft and yielding
heart.*

*I came again when years were gone;
It was a man I looked upon.
He still that early impress bore,
But I could change it never more.*



CONTENTS

ADMINISTRATION

CLASSES

ACTIVITIES

ATHLETICS

JUNIOR HIGH

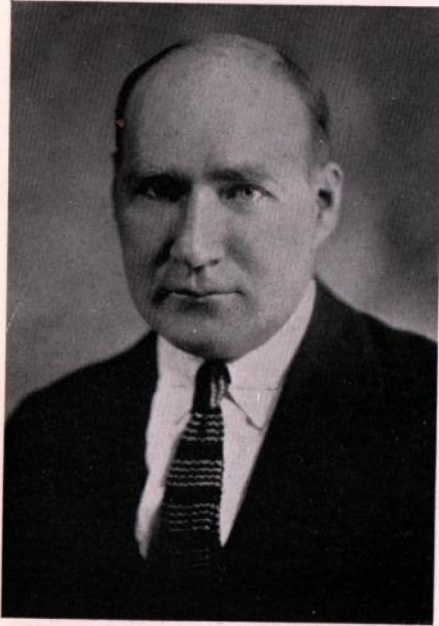
JUNIOR COLLEGE

CALENDAR AND JOKES

ADMINISTRATION



ADMINISTRATION



G. S. WOOTEN, Superintendent



H. J. VAN NESS, Principal

o o

School Board

W. R. DYER, President

MRS. R. L. COOPER

THOMAS J. HEAPS

R. T. DUCKWORTH, Secretary

N. J. SCHROEDER

CLAUDE HAYWOOD

JOHN GOEPPINGER, Treasurer



ADMINISTRATION



[6]



ADMINISTRATION



ADMINISTRATION



[8]



ADMINISTRATION



FACULTY MEMBERS WHO DO NOT APPEAR IN PICTURES:

Anna Belden
Larry Evans
N. A. Fields
Harold Fisher

Beulah Harris
Nellie Harvey
Jennie Lee
Phyllis McAdams
Florence Whannel

Jeannette McEwen
Beulah Nunamaker
Ruth Parks
Helen Sievers

o
o o



Faculty Foibles

Name	Pet Expressions
MISS LUDEKING	"Avoid the trite"
MR. CUNNINGHAM	"Now that's just where you are all wrong" and "That's the way they do it over at Iowa State"
MISS McEWEN	"This means what?"
MR. THORNGREN	"Don't study; just get the gist of the thing"
MISS WHITNEY	"That Means You!"
MR. EVANS	"Just because you're a bunch of farmers doesn't give you any license to be dumb." (Basketball Squad)
MISS WESTON	"I don't think that necessary at all!" "Are you girls communicating?"
MISS NUNAMAKER	"Put your gum in the basket!"
MISS DYER	"Don't use by-words"
MISS E. HARVEY	"I don't mean maybe, perhaps, nor probably!"
MISS LAMB	"You don't know what you can do until you've tried"
MISS SHALER	"Let's have it quiet!"
MISS LINDERBLOOD	"You people settle down!"
MR. LONGNECKER	"Close your books, please, folks"
MISS GUSTAFSON	"You may go to the office!"
MISS PARKS	"Plunge!"
MISS STARR	"Don't hesitate"



CLASSES



Senior Class Prophecy

THE CASTLE OF ACCOMPLISHMENT

One afternoon I was wishing I had something to do when suddenly there appeared before me a tiny man, a grotesque elf-like little creature, who invited me to visit the "Castle of Accomplishment". Following the line of least resistance, I allowed myself to accompany him.

We boarded a tiny boat and, in a veil of mist, floated down a silver stream shrouded in fog. Suddenly, through a break in the mist, I saw a fantastic structure rising thousands of feet in the air and covering many miles. My companion informed me that it was our destination, "The Castle of Accomplishment".

We entered the great structure and found ourselves in a gigantic room. Airplanes were soaring overhead, and people were hurrying to and fro. I was almost ready to cry out in amazement at the queer things about me, when I recognized a number of my old schoolmates in different parts of the huge room.

Mary Elizabeth Whitehill passed me in great haste, carrying a number of test tubes and bottles of chemicals. My companion informed me that she and her partner, Mary Haywood, had become distinguished as scientists in the World of Accomplishment. The errand boy just approaching them, I was told, was Mr. Bechtel, who had been employed in that position after the completion of his contract at Boone High School.

My attention was drawn to a figure which darted past me. It was Miss Gustafson going to take roll at the library, as she had been doing ever since her promotion to the "Castle". She was calling to Mary Morrow and Irene Cress, who were dancing for a crowd of people in the corner, to sit down and be quiet. Among the spectators I recognized Earl Brown, Roswell Chambers, Carlyle Bean, Leonard Vogler, and Chester Stromert, who, I learned, had distinguished themselves by solving the unemployment problem forever, their recommendation being that each individual shirk as much work as possible.

I stopped to read a huge plaque on the wall, and found it to be a golden emblem bearing the inscription, "World's Champion Football Team", and below it the names: William Ackerman, Clarence Dettman, Harold McClelland, Floyd McFarland, Willard Primrose, Emil Schroeder, Joe Knezevich, Laverne Stromert, and others I did not know.

Near a window I found Miss Linderblood reading "Fables in Slang" to Virgil and Cicero, who smiled occasionally at some witticism.

I walked on and found Jean Ward singing for the amusement of Beethoven and Strauss, who applauded with great gusto at the completion of each number.

I had now come upon some booths built in the wall, and as I walked along I found Charlene Battey, Joyce Lees, Lester Henry, James Alexander, Mildred Nelson, and Frank Sanders engaged in the commercial production of a tonic guaranteed to make stronger, bigger, better and more brilliant minds.

In the next booth, I found the Metropolitan Opera Company producing an opera written by the Summers Brothers, Stanley and Lawrence. Among those in the cast I saw Dorothy Thompson, Maurice Weir, Ruth Toepfer, Harlan Weeks, Edna Mae McAlpine, Russell Kilgore, and Everett Buss.

In the next booth was the fastest talking human, Morris Bell, dictating shorthand at the rate of five hundred words a minute to Helen Warner, Elinor Wise, Ione Zunkel, Elsie Markman and Arlene Winter.

I walked along alone (my guide having disappeared among the crowd) and at last came to a door over which was the inscription "O'Brien Home For Orphans". It seems that this part of the castle was the idea of none other than Gerald O'Brien. I went inside to examine the building and made the acquaintance of the matron, Betty Austin. I met four of the nurses in the home whom I had formerly known: Marguerite Grabau, Mildred Patten, Maxine Winter, and Marie Grabau. I also met an old friend, Charles Hilts, serving as chef in this institution.



Back in the large room, I came upon a gathering of women conducting a meeting of a socialistic nature. The name of the society was "The Order of Feminine Supremacy". The leader, Irma Swigert, was talking in loud, admonishing tones for the special benefit of the more prominent members who were: Opal Smiley, Marge Rinehart, Evelyn Ohge, Geneva Meehan, Helen Mecham, Alice McCambridge, Evelyn Hitsman, Violet Jones, and Jayne Havens.

The next thing that attracted my attention was a debate being held before a large group of people. The leading debaters were Gaylord Cook, affirmative, and Miss Eloise Harvey, negative. The question was: "Resolved that bright remarks by students are an asset in Civics class discussions".

I heard a woman near me say that she must hurry back to the studio, and I recognized Virginia Craven, now become a famous movie star. She invited me to visit the studio where she was employed. There I met one of the world's best directors, Loran Horns. Loran was busy producing a very famous play, "Troubles of a Troubadour", written by a noted playwright, Don Johnson. Some of the members of the cast for this picture were: Arabelle Davis, Eileen Coon, Madeline Crispin, Howard Boak, Herman Hull (the villain) and John Marshall. Just then the producers of the show arrived, and I found them to be: Dean Tillson, Robert Taylor, Roeszelle Warden and Max Trainer.

After leaving the "World Famous Studio", I returned to the main room where I heard some very fine music being played by a large orchestra, conducted by Emil Ahrens. I recognized a few individuals in the group. Among those I knew were Geneva Cole, Lester Buechler, Joseph Davis, Albert Crouse, Erhart Forster, Robert Casteel, Veryl Fitzgerald, Rose Ehman, Jesi Finestead and Mary Granson.

The composition being played was so weird and fantastic that I asked the conductor its name and composer. The conductor pointed to the piano. There sat a long haired individual, who was oblivious to all about him as he madly pounded the keys. "Professor Mauck is the composer and the name of the composition 'A Night at Home'," said the conductor.

After congratulating Professor Mauck, I walked on and came to what was, apparently, a newspaper office. There I met the editor-in-chief of the "World of Accomplishment". She was my former friend, Lillian Bowman, and with her was her secretary, Miss Lois Baldwin. Miss Bowman told me that each day's issue carried news of people not yet awarded a place in the "Castle", but who were being considered for prominent places there. A copy of the paper was just off the press, and I scanned its pages eagerly. Some of its items read thus:

FAMOUS FINANCIERS START FOR PARIS

Ashford Bantley and Frank Griggs today started for Paris, France, to confer with the French Premier on the financial problems of the world.

DESIGNERS HOLD CONFERENCE IN PARIS

Paris today was hostess to one of the most distinguished groups of designers history has ever seen assembled. Among these celebrities of design were: Lois Feigley, Sidney Fox, Madame Beauchamp (formerly Miss Jean Shaffer), John Lee, Alice Laub, and Ruth Trulin.

GREAT MINDS OF THE CENTURY ESTABLISH NEW COLLEGE

Margaret Sullivan, Jean Sammin, Rex Noland, Elizabeth Morgan, Vernon Lawson, and Charles Kilborn are to establish college. (This was the lead to the item, but I hurried on to the next bit of news which was even more startling.)

SOCIETY OF CONTENTED OLD MAIDS PUBLISHES MEMBERSHIP LIST

Jean Cruikshank, Wanda Gorham, Helen Jennings, Amine Kelley, Helen Lindmark, Jayne Schroeder, Eleanor Ross, and Nadine Samuelson.

PRESIDENT SELECTS TWO NEW SECRETARIES

President Jack Papineau selects two new private secretaries, former schoolmates

(Continued on page 43)



“32” Will

Blessings on thee, old Boone High!
Now Commencement's drawing nigh,
We bequeath and will to thee
Eternal love and loyalty.
When we attain success and fame
Remember, 'twas from thy halls we came.

Blessings on thee, Junior class!
We leave you this as now we pass;—
To “Fey” we leave V. L.'s address;
(Seven years or more from now, we guess,
Us you will rise right up and bless,
Unless on our officiousnesss
You lay the blame for your marital mess.)
Mable Bolitho we shan't neglect,
She gets Stan's eyes, he won't object;
(For hours the blue into gray have gazed,
Entranced, up to heaven, the two have been raised.)
But to go on; have you ever noted
The number of jokes Jean Ward has quoted?
These jokes and their source, dear ladies and gents,
We leave to Sandy, with our compliments.
And all of Donny Johnson's rights
As the Seniors' handsome and shieky man,
We hereby leave to “Eddy”, and then
May Grayce try to hold him, if she can.
The active jaws of Lois and Veryl,
With their large supply of Wrigley,
Is left for Donald Lebo's use;
(May he always chew as merrily,
And think as quickly and fast,
As they have done this year just past.)
John Dyer is such a darling lad
(A tiny bit shy, but really not bad)
We have decided that we shall be his friend,
And leave to him the conversational bend
Possessed by Lester and Harold.
Our supply of sense, and our happy days,
Together with all of our charming ways,
Our handsome looks and our dignity,
We hereby, Junior Class, bequeath to thee.
And now for the rest of you, nothing remains,
Unless, 'twould be “Ducky's” lack of brains.
We, the carefree class of 'thirty-two,
Make these bequests for the good of you.
And now, as we go, we drop behind
A wish that is big and true and kind—
May the classes that soon will follow us
Into the wide, cold world,
Take with them memories just as gay
As those that we carry off this day.



Silly Senior Songs

THE DOWNFALL OF STORY CITY

There was a team from Story City,
And there was one from Boone.
The first team thought that they were good,
But they were vanquished soon.

On the night of September twenty-fifth,
These teams met under the lights.
When Boone and O'Brien got through with
them
Story City was put to flight.

The field was damp from recent rains,
And before a quarter was done,
Both teams were wet and a very sad sight,
But Boone had almost won.

And after the timer had fired his gun,
And the wreckage was cleared away,
The score sheet showed that Boone had
won,
By twenty points they say.

This story has no moral strong,
But this last statement is true:
"Do not mix with a team from Boone,
Or this will happen to you."

C. M.

THE PAINTED BUS

Oh, Sanky had a rare old bus
And it did run just so.
He decked it out in paint one day,
(They say 'twas just for show.)
The wheels were black, the sides were red,
The top a lemon cream,
The engine was a rare old hue
The whole a smashing scream.

He worked all day, till nearly night
(The fenders just would curl)
At last he sighed and straightened up,
And went to call his girl.

"My dear, you should just see my bus,"
He told the maiden fair.
But when she came and looked thereon,
She gave that guy the air. A. L.

MY PAL

My greatest pal is my wad of gum;
We're never parted, let anything come.
Incessant action we both demand.
And, in spite of the teacher's reprimand
We're always about, and no matter what
comes
We'll always remain the most perfect of
chums. J. L.

STAN

He's tall and he's cute, and he's quite the man,
He's bright as can be, and the kids call him "Stan",
He likes the girls, and the girls like him,
(Though he drives them home on the car wheel's rim.)
He's a Rudy Vallee and John Gilbert, too,
And he's oodles of fun, whatever you do.
He has the merriest grin and an impish air;
Wherever there's mischief "Stan" Summers is there.

J. L.

BALLAD OF THE MERMAIDS

Some girls there were who once did make
A dainty picnic lunch.
And Rip, she took potato chips,
She liked their pleasant crunch.

Charlene must have her chocolate,
So cookies they did take.
And many things I cannot name;
I know that they had cake.

They ate and ate till they were full,
Then these six foolish girls
Into the swimming pool they went,
In spite of paint and curls.

A cramp seized Betty by surprise.
Ne'er was she seen again!
Virginia sank so suddenly,
I could not count to ten.

And Jo into the water dove;
And breathed no more the air.
Then Dorothy so lonesome was,
Said she, "I'm going where

My other friends have gone before;
I know I'll happier be."
Into the water then she jumped
And drowned most willingly.

M. E. W.



Seventeen 1933 Graduates Married so far. Sept. 12, 1933

SENIORS

WILLIAM ACKERMAN

Scientific

Football 1-2-3; Class Basketball; Track 3.

Lift your wings and bravely fly.
A fighting spirit will reach the sky.

EMIL AHRENS

Scientific

Football 3; Class Basketball; Track 3.

Ready to sail the uncharted sea,
Only the future knows what it is to be.

JAMES ALEXANDER

Commercial

Soph. Sec. and Treas.; Swimming 1-2, Capt. 3; Glee Club 1-2; Orchestra 1; Masque and Buskin, Pres. 2, V.Pres. 3; "Orange Colored Necktie"; Hi-Y 1-2-3; Social Science Club, Pres. 2-3; Commercial Club 1-2-3; Student Council 1; Bonita Club 1-2-3; Class Swimming Meet 1-2-3; Music Contest 1; Swimming Exhibition 1-2-3.

"Hobby" means many things to Jim,
Every object interests him.

VIRGINIA ANDERSON

Commercial

Swimming 2; Volleyball 1-2-3; Basketball 1-2-3; Social Science Club 3.

Her arch, rosy lips, and her eager blue eyes,
Give her a look of impertinent surprise.

HELEN ASPENGREN

Commercial

With her curly locks and quiet way,
We like her better every day.

BETTY AUSTIN

Language

Bumble "B" 1-2-3; Swimming 1-2-3; Basketball 1-2-3; Volleyball 1-2-3; Glee Club 2-3; Masque & Buskin 1-2-3, Treas. 2; Social Science Club 2-3; Student Council 3; Bonita Club 1-2-3; Sacred Concert.

Some call it auburn, some plain red,
No matter which, it's a beautiful head.

LOIS BALDWIN

Commercial

Commercial Club 3.

A good student, a better friend,
She's always ready some aid to lend.

CHARLENE BATTEY

Language

Scroll 2, Editor-in-chief 3; Class Swimming Meets 1-2-3; Basketball Capt. 1-2-3; Swimming Exhibition 1-2-3; Sacred Concert; Glee Club 1-2-3; Music Contest 1-2; Declamatory 1-2-3; Masque & Buskin 1-2-3, Sec. 2; Student Council 2; Bonita Club 1-2-3; Quill and Scroll 2-3; Social Science Club 2-3; Sr. Red Cross life saver.

Serene, and resolute, and wise,
And calm, and self possessed.



Dead
Killed
W.W.II

Married
REUNION

1967

M

Married
Dead



Feb. 14 '35

SENIORS

Married.

Married



CARLYLE BEAN Arts and Crafts

Review 1967
I've heard it said he's very cute,
With curly hair and eyes to suit.

Baby

MORRIS BELL Scientific

Orchestra 1-2; B. H. S. Players; "Cyclone Sally";
Band 1-2; Student Council 2.

Review 1936
"My honor is my life, both grow in one;
Take honor from me and my life is done."

Baby

ASHFORD B. BENTLEY Scientific

Hi-Y.

The women simply adore him; his lips are
like Cupid's bow,
Though he never ventures to use them, they
vote him far from slow.

HOWARD E. BOAK Commercial

Class Basketball 1-2-3; Glee Club 1-2-3; B. H. S.
Players 1-2-3; Social Science Club 3; Commercial
Club 3.

Review 1967
I waste no minutes in weak regret,
For what I remember and what I forget.

Divorced
Baby

LILLIAN BOWMAN Normal Training

Bumble "B" Editor 2-3; Basketball 1; Glee Club
1-2-3; Declamatory 1; Masque & Buskin 2, V-Pres.
3; Social Science Club 3; Normal Training Club,
V-Pres. 3.

Gentle and willing other's burdens to bear,
She is ready to do much more than her share.

GLENN BOYD Agriculture

Hi-Y 3; Social Science Club 3.

He's a quiet and cute little freckle-faced lad,
With a great big smile, when he forgets to
be sad.

EARL BROWN Scientific

Track 3; Basketball 1-2-3; Hi-Y 1-2-3; Student
Council 3.

How sweetly he slumbers in yonder chair,
Lost to the world of sorrow and care.

LESTER BUECHLER Social Science

Band 1-2-3; Agriculture Club 1-2-3.

Peace to the just man's memory—may it grow,
That of his greatness all the world may know.

Review 1967

Dead



SENIORS

REUNION 1967
Apr. 35-1936

EVERETT BUSS - *Helen Warner* Arts & Crafts

Football 1.

Baby Gretchen
His manly soul so brave and true,
Makes him strive, always, his best to do.

DWAYNE CAMPBELL Social Science

Basketball 1-2; Track 2; Glee Club 2.

A humorous lad, with plenty to say;
He likes to talk, and he does all day.

ALYCE CARLSON Commercial

Glee Club 1; Commercial Club 3.

No matter where you meet her she always
gives a smile,
And don't you think it's such folks that make
life seem worth-while?

ROSWELL CHAMBERS - Commercial

Social Science Club; Student Council

He may be short and he may be fat,
But he's all right for all of that.

GENEVIA COLE Language

Scroll; Declamatory 1; Social Science Club 3.

Hard-working, patient, eager for praise,
She somehow brightens your darkest days.

GAYLORD COOK Scientific

Science Club 1-2-3; Band, 1-2-3.

With weary steps I loiter on,
My prospect and horizon gone.

EILEEN COON Commercial

Basketball 1; Glee Club 1-2-3; Debate 2-3; B.
H. S. Players 1-2-3; Social Science Club 3; Com-
mercial Club 2-3.

"Conny" is quite a popular lass,
Whether busy at play or in a class.

VIRGINIA CRAVEN Commercial

Bumble "B" 2-3; Volleyball 1-2-3; Basketball
1-2-3; Social Science Club 2-3; Commercial Club
2-3.

Too true to flatter, too kind to sneer,
And always just, though not severe.



MARRIED

Dead

Dead
1938.

Dead

REUNION

Married Jan. 1935.



SENIORS

1936



HAROLD CRAWFORD

Social Science

Social Science Club.

Nothing ever bothers me,
So I can live at ease you see.

IRENE CRESS - King Social Science

Volleyball 3; Basketball 1-2-3; Swimming 1;
Swimming Exhibition; Glee Club 1-2-3; Music Con-
test; Sacred Concert; Masque & Buskin 1-2-3;
Social Science Club 2-3.

There is a little looking glass upon the cloak-
room shelf,
If you'll step in one moment, dear, you shall
behold yourself.

MADELINE CRISPIN

Commercial

She may awe the world with her haughty
frown,
But her friends know at heart she's a regular
clown.

ALBERT CRUSE

Agriculture

Agriculture Club 1.

What would I do without the farm?
It holds for me a sort of charm.

KATHRYN CROXEN - Stuart Social Science

Basketball 1; Social Science Club 3.

Shining hair of chestnut brown,
There's no better friend in all the town.

JEAN CRUIKSHANK

Language

Bumble "B" 1-2; Basketball 3; Glee Club 1-2-3;
Masque & Buskin 2-3; "Am I Intruding"; Music
Contest 1-2; Social Science Club 3; Girls' Sex-
tette 2-3; Yell Leader 2; Sacred Concert 1-2-3.

You can't help but like her—we all do;
She's a pretty brunette with laughing lips,
too.

LOWELL CRUSE

Scientific

Agriculture Club 1-2.

"Learning by study must be won;
'Twas never entailed from sire to son."

LILLIAN CUTLER - Ross

Language

Scroll; Glee Club 1-2-3; Sacred Concert; Social
Science Club 3.

A captive void of noble rage;
A linnet born within a cage.



SENIOR

REUNION 1967
Married Baby

ARABELLE DAVIS - *Pestotnick* Normal Training

Glee Club 2-3; Debate 3; Sacred Concert 2-3;
Social Science Club 3; Normal Training Club 3.

My loved, my honoured, much respected
friend,
With honest pride you scorn each selfish end.

CLIFFORD DAVIS Commercial

Class Basketball 1-2-3; Commercial Club 1-2;
Hi-Y 1-2.

You hear the boy laughing—you think he's all
fun;
But he's good as gold, and bright as the sun.

JOE DAVIS Commercial

Commercial Club 2.

Clear of eye, clean of mind,
The best in life he's sure to find.

CLARENCE DETTMAN Commercial

Strong for the red rage of battle, plenty of
grit and fight;
No matter how high the hurdle, he'll take it
with all his might.

MARJORIE DOLL Social Science

Swimming 1; Glee Club 1-2-3; Music Contest;
Sacred Concert; Masque & Buskin 2-3; Social
Science Club 2-3.

Blue eyed and pretty, she is also very bright;
But in spite of her brains she studies each
night.

JOSEPHINE ECKLEY - *Beckett* Commercial

Bumble "B" 3; Social Science Club 3; Commer-
cial Club 3.

The wisest head and warmest heart,
Is often prey for Cupid's dart.

ROSE EHMAN Normal Training

Social Science Club 3; Normal Training Club 3.

Rose is a very industrious soul,
To do her best has been her goal.

ELLEN ERBE Language

Bumble "B" 1-2-3; Volleyball 1; Basketball 1-2-3;
Glee Club 1-2-3; Sextette 1-2-3; Music Contest
1-2; Sacred Concert 1-2-3; Declamatory 2; Masque
& Buskin 1-2-3; "Orange Colored Necktie"; Social
Science Club 2-3; Quill and Scroll 2-3.

Energetic and lively, she's busy all day,
Trying always to make things work the right
way.



M

REUNION 1967

Married

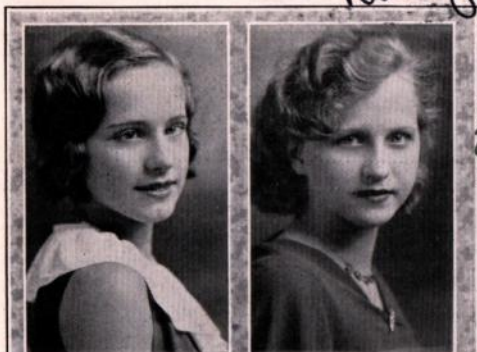
Dead

REUNION 1967



SENIORS

Baby



LOIS FEIGLEY

Language

Swimming 1-2-3; Glee Club 2-3; Masque & Buskin 1-2-3; Bonita 1-2-3.

She fears no weather, dark or fair,
For she carries sunshine everywhere.

JESIMARIE FINESTEAD - *Mather*

Normal Training

Masque & Buskin 1-2; Social Science Club 2; Normal Training Club 2.

With eyes of blue and hair of gold
And lips that much of laughter hold.



VERYL FITZGERALD - *Tonsfeldt*

Social Science

Swimming 1-2-3; Masque & Buskin 2-3; Social Science Club 3; Bonita Club 2-3.

My truant steps from school would stray,
If I'd but let them go their way.

ERHART FORSTER

Scientific

Class Basketball 1-2-3; Science Club 2-3.

There isn't much that one can do,
When one is feeling sad and blue.



SARA FOX

Scientific

Bumble "B"; Mascue & Buskin 1-2-3; "Help Yourself"; Social Science Club 3; Quill and Scroll 3.

Always ready to lend a hand,
To help some other to take his stand.

SYDNEY FOX - *Baby*

Scientific

Scroll; Bumble "B"; B. H. S. Players; Student Council 2.

Maidens, maidens everywhere, and no safe place for me;
Maidens, maidens everywhere, oh where, where shall I flee?



PAULYNE FULLERTON

Commercial

Social Science Club 3; Commercial Club 1-2.

Eager for work and eager for play,
She scatters sunshine along the way.

GLADYS GIBBONS

Commercial

Masque & Buskin 3; Social Science Club 3; Student Council 3.

Gladys is upright, true, and square,
Happy, and without a single care.



SENIORS

WANDA GORHAM - *Van Dusen* Language

Glee Club 1; B. H. S. Players; "Am I Intruding";
Social Science Club 3; Student Council 2.

Brilliant and studious, able to finish each
task—
All this, and some beauty; what more could
one ask?

MARGUERITE GRABAU Commercial

Social Science Club 3; Commercial Club 2-3.

She's blond, and she's fair, and very sweet,
With a ready smile whenever you meet.

MARIE GRABAU Commercial

Social Science Club 3; Commercial Club 2-3.

A beaming gladness lights her face,
And merry smiles o'er it swiftly race.

JOHN GRANSON Scientific

Class Basketball 1-2-3; Science Club 2-3; Hi-Y 2-3.

His honest heart is light and free,
As the heart of all young men should be.

MARY GRANSON Social Science

Social Science Club 3.

All that other folks can do,
With patient effort, I can too.

FRANK GRIGGS Scientific

Class Pres. 2; Class Basketball 1-2-3; Orchestra
1-2-3; Music Contest 1-2-3; B. H. S. Players 3;
Science Club 2; Hi-Y 2-3; Social Science Club
2-3; Band 1-2-3; Student Council 1-2.

A sheik in manner and in dress,
I like the girls I must confess.

JANE HAVENS - *Earl Elliott* Arts & Crafts

Bumble "B" 3; Social Science Club 3.

I think two girls are better than one,
And two nice boys can double the fun.

MARY HAYWOOD - *BAXTER* Scientific

Swimming; Glee Club 1; Social Science Club 2;
Student Council 1-2.

Life is perfect and youth is sweet,
When admiring lads fall at your feet.



*REUNION
1967*

*REUNION
1967*

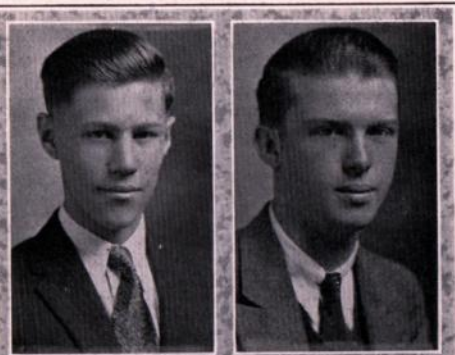
*M
1937*



X [21]

SENIORS

Reunion
1967

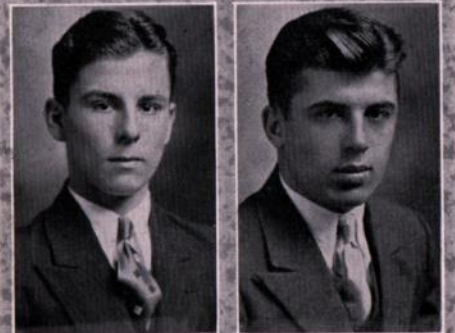


CHARLES KILBORN Scientific
Football 2-3.

He labors hard each and every day,
To do his work in the very best way.

RUSSELL KILGORE Scientific
Glee Club 1-2-3; Orchestra 1-2-3; Science Club 3;
"Bells of Capistrano"; Band 1-2-3; Music Contest
1-2-3; Sacred Concert 1-2-3.

A very likeable person is he,
This red-haired chap, as you can see.



RICHARD KILLION Social Science
Track 1; Class Basketball 2-3; Science Club 1-2-3;
Hi-Y 2-3; Social Science Club 2-3; Student Council 3.

He's full of fun, and laughter gay
Is heard from him from day to day.

JOE KNEZEVICH Scientific
Football 1-2-3; Basketball 2; Hi-Y 2-3; Social
Science Club 3; Student Council 3.

His jolly, honest, handsome face
Will find him friends in every place.

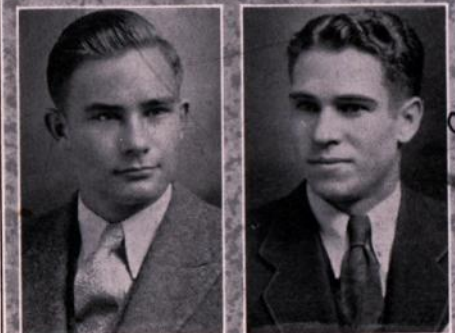


BERNICE LANG Commercial
Social Science Club, 3.

With blooming cheek and open brow,
As young and gay as youth knows how.

ALICE LAUB - ? *Swigert* Arts & Crafts
Scroll 3; Glee Club 3; Orchestra 3; B. H. S.
Players 3; Hi-Y Ettes 1-2-3; Band 1-2-3.

Witty, winsome, and a very artistic soul
As is proved by the art-work in this Scroll.



VERNON LAWSON Scientific
Bumble "B" 2-3; Football 1-2-3; Class Basketball
1-2-3; Science Club 3; Hi-Y 3; Social Science
Club 3.

He's sort of cute and we love his grin;
He doesn't like school, but that's not a sin.

JOHN LEE - *Mildred Groom* Commercial

'Twere hardly worth my while to choose,
Of things that mortal man can use.

Reunion
1967

*Married
Dad?
Baby*

Married

1936



SENIORS

JOYCE LEES

Scientific

Bumble "B" 1-2; Scroll 3; Volleyball 1-2-3; Basketball 1-2-3; Glee Club 1-2-3; Debate 3; Declamatory 3; B. H. S. Players 2-3; Sacred Concert 1-2-3; Social Science Club 2-3.

Friendliness, steadiness, grace and beauty,
Plus wisdom, the Muse, and a full sense of
duty.—Anonymous.

KATHERINE LINDBLOM

Language

Bumble "B" 3; Basketball 3; Glee Club 1; Masque & Buskin 2-3; Social Science Club 3; Student Council 1-3.

Nimble fingers skim the keys,
Sending music on the breeze.

HELEN LINDMARK

Eldien.

Commercial

Orchestra 1; Social Science Club 3; Commercial Club 3; Student Council 2-3.

Quiet, demure, never forward nor bold,
She is liked by the gentlemen, whether youthful
or old.

EDNA MAE McALPINE

Wm Kemp

Commercial

Volleyball 1-2-3; Basketball 1-2-3; Glee Club 2-3; Declamatory 1; Masque & Buskin 3; "Cyclone Sally"; Social Science Club 3; Commercial Club 3.

Smart as they make them and with ready
wit
There's no one can beat her, no, not a bit.

ALYCE McCAMBRIDGE

Ross

Scientific

Basketball 1.

Things just won't go as I want them to,
But that never makes me sad or blue.

HAROLD McCLELLAND

Scientific

Science Club.

Harold has a good mind we hear,
But not as good as he thinks, we fear.

FLOYD McFARLAND

Social Science

Football 1-2-3; Track 1-2; Science Club 2; *RE-DIVISION*

He's a jolly good fellow, the best to be found,
And everyone loves to have him around.

ELSIE MARKMAN

Commercial

Social Science Club 3.

With flaxen hair and eyes of blue,
Quiet, shy, but a friend right true.



M Dead 1937.

Dead

Dead



SENIORS

Reunion 1957 1967

Reunion 1967
1935
Baby



JOHN MARSHALL

Swimming 1-2-3; Bonita 1-2-3; Band.

His bark is big but his bite won't hurt,
And furthermore—he likes to flirt.

HELEN MECHAM - CRAWFORD Social Science

Bumble "B" 3; Basketball 3; Glee Club 3; De-
clamatory 3; Masque & Buskin 3; Social Science
Club 3.

As brimful of mischief, and wit, and glee,
As ever the human child can be

GENEVA MEEHAN - Erickson Commercial

Volleyball 3; Social Science Club 3.

Mischievous grin and eyes alight,
A piquant face with laughter bright.

LILLIE MIKESELL - ? Commercial

She works while she works, and plays while
she plays,
In what better way could one pass her days?

WILLIAM MILES Social Science
Football 3.

My mind lets go a thousand things,
Like dates of wars and deaths of kings.

CLIFFORD MILLER Social Science

Football 2-3; Basketball 1-2; Class Basketball 3;
Track 3; Hi-Y 3.

Vigor, vitality, vim, and punch,
Make him ready to act on the slightest hunch.

ELIZABETH MORGAN Scientific

Volleyball; Glee Club; Social Science Club.

With a merry laugh and a merrier tongue,
The praises of all men has she sung.

MARY MORROW - Social Science

Bumble "B" 1-2-3; Basketball 1; Masque & Buskin
1-2-3; Social Science Club 2-3.

The Bumble "B" claims the most of her time,
So if she misses her lessons it isn't a crime.



SENIORS

MILDRED NELSON

Scientific

Class Sec.-Treas. 3; Scroll 3; Basketball Capt. 1-2;
Social Science Club 3; Student Council 3.

Conscientious and eager her share to do,
Wise, and with a sense of humor, too.

REX NOLAN

Agriculture

Agriculture Club; Social Science; Masque &
Buskin.

A youth to fortune and fame unknown.
For pleasure marked him for her own.

GERALD O'BRIEN

Commercial

Football 1-2-3; Glee Club 1; Normal Training
Club 1; Commercial 1-2; Student Council 3.

Sure, and he's an Irishman straight from Erin,
With his curly hair an' Irish bearin'.

EVELYN OHGE - REEDHOLM

Commercial

The dimples play and the laughter lies,
Like sunbeams hid in her dancing eyes.

JACK PAPINEAU

Social Science

Football 3; Social Science Club 3; Student Coun-
cil 3.

'Though we've only known him one short year,
We're very glad Fate brought him here.

MILDRED PATTEN - SELLERS

Commercial

Social Science Club 3.

She is gentle, gracious, wise, and good,
With all the beauty of womanhood.

ARCHIE PATTERSON

Scientific

Basketball Manager 3; Science Club, Pres. 3, 2;
Student Council 1-3.

He's Mr. Fisher's right-hand man,
And he does the work as no other can.

ROSEMARY PAYNE - Johnston

Social Science

Swimming 1-2; Glee Club 1-2-3; Masque & Buskin;
Social Science Club 3; Student Council 3; Bonita
Club 2-3.

A lovely gypsy maid with bright and elfish
face;
She bubbles o'er with laughter in spite of
time or place.



Dead
REUNION
1957

M

Married
REUNION
1967

Married

Married
1938.

[27]



SENI,

2
FERNE PETERSON

Commercial

Social Science Club 3.

Modest as a violet, or a rosebud sweet,
She's the kind of little girl people like to meet.

RANDALL PETERSON

Scientific

Class V.-Pres. 3; Football 2-3; Basketball 1-2-3;
Science Club 3; Hi-Y 3; Student Council 2-3.

Handsome and strong and manly and tall;
He's always ready for Nora's call.

WALTER PHIPPS

Commercial

Athletics 1-2-3; Commercial Club 2.

A cheerful, sleepy, good-looking chap,
Whose usual pastime is taking a nap.

MARIAN POTTS

Commercial

Bumble "B" 2-3; Class Basketball 1-2-3; Volleyball 1-2; Mosquito & Buskin 2-3; "Orange Colored Necktie" Social Science 1-2-3.

Smiling, chatty, always gracious and sweet,
The nicest maiden man ever could meet.

WILLARD PRIMROSE

Scientific

Athletics 2-3; Agriculture Club 1-2-3; Student Council 1-2-3.

A modern farmer he will be,
By the newest methods, you shall see.

MILDRED RASMUS

Commercial

Will she always be youthful, and laughing,
and gay,
With never a thought for some future day?

LARGE RINEHART

Commercial

Basketball 1; Glee Club 1-2-3; Debate 3; Masque
& Buskin 3; Social Science Club 3, Commercial
Club 2-3.

Many the hearts that faster beat,
When Marge flies past on airy feet.

FERN ROSE

Normal Training

Social Science Club 3; Normal Training Club 3.

With a heart that never forgets it's song,
In spite of the darkness, or a road that is
long.



SENIORS

LORRAINE ROSE

Arts & Crafts

Basketball 1-2; Social Science Club 2.

Happy am I, absolutely carefree;
Why isn't everyone contented like me?

ELEANOR ROSS

Commercial

Social Science Club 3; Commercial Club 3.

An existence untroubled by envy or strife
I claim as my own; 'tis the perfect life.

LILLIAN ROYSTER

Commercial

Social Science Club 3.

So healthy, sound and sometimes droll,
With a youthful lightness of the soul.

2 children

MARIE ROYSTER

Commercial

Social Science Club 3; Commercial Club 3.

I live for those who love me,
For the best that I can be.

MARY SAFSTROM

Commercial

Commercial Club 2-3; Student Council 1.

A perfect woman nobly planned
To warn, to comfort, and command.

JEAN SAMMIN

Arts & Crafts

Bumble "B" 2-3; Basketball 1-2-3; Volleyball 1-2-3; Social Science Club 2-3.

I cheer, I help, I strengthen, and aid,
I gladden the heart of man and maid.

NADYNE SAMUELSON

Commercial

Basketball 1-2; Glee Club 2-3; Masque & Buskin 2-3; Sacred Concert 2; Social Science Club 3.

A good disposition, a comely face,
Talented, pleasant, and full of grace.

FRANK SANDERS

Social Science

Bumble "B" 1; Golf 1-2-3; Class Basketball 1-2-3; Glee Club 1-2-3; Debate 3; Yell Leader 2-3; Masque & Buskin 3; Social Science Club 3; Student Council 1.

Of stature short, but genius bright?
If aught is wrong, he'll make it right.



SENIORS

1937

1937



EMIL SCHROEDER *Edna Finch* Commercial
Class Basketball 1-2-3; Track Capt. 2-3; Football 1-2-3; Commercial Club.

Steady, and good, and true is he,
And ready for every emergency.



JAYNE SCHROEDER *Porter* Normal Training
Bumble "B" 1-2-3; Basketball; Swimming 1-2-3; Glee Club 1-2; Normal Training Club 1-2; Commercial Club 1.

Lively and happy, always cheerful and gay,
A girl you are glad to meet any day.



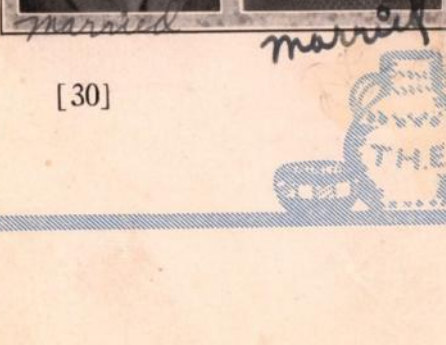
NORA SELLERS *PETER RON* Commercial
Volleyball 1-2-3; Basketball 1-2-3; Glee Club 1-2-3; Music Contest; Student Council 3; Masque & Buskin 2, Pres. 3; Social Science Club 3; Commercial Club 2-3.

She is winsome and bonny and gay as can be,
And "Pete" really likes her, of course, can't you see?



JEAN SHAFFER *Edna Mauch* Social Science
Bumble "B" 1-2; Basketball 1; Glee Club 1-2, Pres. 3; Girls' Sextette 1-2, Sec. 3; B. H. S. Players 1-2, Pres. 3; Music Contest 1-2-3; Social Science Club 2-3; Sacred Concert 2-3; Student Council 3.

A dancing shape, an image gay,
To haunt, to startle, and waylay.



VERNON SHAEFFER Commercial
Masque & Buskin 3; Commercial Club 2-3.

He's as ready for work as he is for play,
And he'll do his share wherever he may.



OPAL SMILEY *SUNSTRON* Commercial
Glee Club 1-2; B. H. S. Players 2; Social Science Club 1; Yen Leader 2; Commercial 1.

Clever and peppy and full of fun,
She's liked and admired by everyone.

JOHN SPURGEON *Constance Jackson* Social Science
Swimming 1-2-3; H.S. 2-3; Bonita Club 1-2-3.

Broad and brawny, and big and strong,
As our best swimmer, he'll be remembered long.

PAULINE STOLTE *NELSON* Commercial
Social Science Club 3; Commercial Club 1-2; Student Council 1.

I have a tender heart to keep, and hope to
keep it long,
For love is not the joyous thing that men
imply in song.



SENIORS

CHESTER STROMERT

Social Science

Class Basketball; Glee Club 1-2-3; Science Club 2; Social Science Club.

I'd rather play hookey most any day
Than listen to what the teachers say.

LA VERNE STROMERT

Social Science

Football 2-3; Glee Club 1-2-3; Social Science Club 3.

Senior, tarry here no longer;
Brains so strong can grow no stronger.

ROSEMOND STUMBO

Normal Training

Glee Club 2-3; Class Basketball 2; Normal Training Club.

Her mind at peace with all below,
Lights her face with a friendly glow.

MARGARET SULLIVAN

Social Science

Debate 3; Social Science Club 3.

Life is just a jolly song,
If you'll but smile as you go along.

LAWRENCE SUMMERS

Scientific

Orchestra 1-2-3; Debate 3; B. H. S. Players 1-2-3; Hi-Y 1-2-3; Social Science Club 3; Band 1-2-3.

Quiet, and sarcastic at times is he,
But as bright and clever as a boy can be.

STANLEY SUMMERS

Scientific

Class Basketball 1-2-3; Football 2; Track 1-2-3; Declamatory 3; Masque & Buskin; Science Club 1-2-3; Hi-Y; Social Science Club 2-3; Band 1; Student Council 1-3.

Disguise our bondage as we will,
'Tis woman, woman rules us still.

DUDLEY SWANSON

Commercial

Class Basketball 1-2-3; Orchestra 1; Band 1-2-3.

With the nerve to tackle the hardest tasks,
He's ready to do whatever one asks.

ERMA SWANSON

Normal Training

Glee Club 1-2; Music Contest; Sacred Concert; Normal Training Club 3; Student Council 3.

Her modest answer and graceful air,
Show her as wise as she is fair.



1937

Dead

M. D.

married

mine own
"Pal"

Popey

REUNION

M



SENIORS

Reunion
1957-1962

1937

Reunion
1957

Senior

Baby
Dad
Mrs. Williams

married



ROBERT TAYLOR -

Wissler Scientific

Class V-Pres. 2; Scroll 3; Class Basketball 1-2-3; Track 2-3; Masque & Buskin 3; Science Club 2-3; Hi-Y 2-3; Social Science Club 3; Student Council 2.

I am very quiet and modest and shy -??
But the girls would all weep if I should die.

DEAN TILLSON

Scientific

Class Pres. 2; Class Basketball, Capt. 1; Football 1-2-3; Basketball 2-3; Glee Club 1-2-3; Orchestra 1-2-3; B. H. S. Players 1-2-3, Pres. 3; "Second Childhood"; "Memory Rose"; Hi-Y 2, Pres. 3; Band 1-2-3; Student Council 1-2-3; Music Contest.

Not to every man is given,
The right to lead and not be driven.

DOROTHY MAE THOMPSON

Commercial

Social Science Club 3.

A gay, fun-loving, happy girl,
With eyes a-dancing, hair a-curl.

MARION TODD

Scientific

Glee Club 3.

His youth was innocent, and now his riper
age,
May lay before the world a clean and un-
stained page.

RUTH TOEPFER -

Destina

Commercial

Her love of truth, so warm, so strong,
Is only matched by her hatred of wrong.

MAX TRAINER

Scientific

Glee Club 1-2-3; B. H. S. Players 2; Science Club 1; Music Contest; Hi-Y 2-3; Social Science Club 2-3; Student Council 1-2-3.

Max is a happy business lad,
Following in the footsteps of his dad.

RUTH TRULIN -

Williams

Commercial

Volleyball 3; Social Science Club 3; Commercial Club 3.

She has a voice of gladness, and a smile,
And both will banish sorrow for awhile.

LEONARD VOGLER

Agriculture

Masque & Buskin; Social Science Club 3.

He has laughed with the girls; he has sported
with boys;
Ever blithe, ever bold, all things he enjoys.



SENIORS

JEANNE WARD

Language

Basketball 3; Volleyball 1; Glee Club 1-2-3; B. H. S. Players 2-3; "What's the Matter With Mother"; Music Contest 1-2-3; Social Science Club 3; Girls' Sextette 2, Pres. 3; Sacred Concert 1-2-3; Piano Accompanist.

My teachers can beg, can coax, and command,
But I'll do what I want to, without reprimand.

ROESZELL WARDEN

Social Science

Football 1; Class Basketball 1-2-3; Science Club 3; Hi-Y 3; Social Science Club 2-3.

A man convinced against his will
Is of the same opinion still.

HELEN WARNER - Buss

Commercial

Bumble "B" 3; Glee Club 1-2; Sacred Concert 1; Social Science Club Sec. 3; Commercial Club 2-3.

She has charm absolutely her own,
Which she refuses to sell, or even to loan.

ROBERT WATSON

Arts & Crafts

Class Basketball 1; Social Science Club 3.

The title "Cheerful Chauffeur" to him could
be applied,
For many are the students that he has given
a ride.

HARLAN WEEKS

Commercial

Bumble "B" 1-2-3; Orchestra 1-2-3; Social Science Club 3; Commercial Club 3; Band 2-3.

How sweet are looks that ladies send,
For them I strive until the end.

MAURICE WEIR

Scientific

Heroll 2-3; Hi-Y Club 2-3, Pres. 3; Class Basketball 1-2-3; Science Club 2-3; Social Science Club 2; B. H. S. Players 1-2-3; Class V.-Pres. 1; Student Council 1-2; Quill and Scroll 2-3; "He".

Whenever there is work to do,
We know we can depend on you.

RALPH WHITE

Scientific

Science Club 2-3; Social Science Club 3; Band 1-2-3.

There's a very imp of mischief in his eye,
And yet, he is most awfully, awfully shy.

MARY ELIZABETH WHITEHILL

Language

Heroll 3; Swimming; Basketball 1-2-3; Volleyball; Glee Club 2-3; Orchestra 2-3; Masque & Buskin 1-2-3; Social Science Club 2-3; Bonita Club 1-2-3; Music Contest.

A merry laugh and a wicked grin,
Opens our hearts, and she walks in.



Dead
RENNION

M

RENNION

Married

Died.
Jan. 26-1935.



SENIORS

Divorced married



Married

Reunion 1957-1967

ELEANOR WISE - MILLER Commercial
Basketball 1-2-3; Social Science Club 3; Commercial Club 3.

Let your name, your fame, and your courage
declare
What a woman can do, and a woman can
dare.

MAXINE WINTER - Barnes Commercial
Glee Club 1-2-3; Commercial Club 3; Music Contest 1.

Bonny and blithe, with plenty to do,
She yet has time to laugh with you.

July 1934

ARLENE WINTER - Crawford Commercial
Social Science Club 3; Commercial Club 3; Student Council.

A gentle, joyous child of nature, fearless,
frank, and free;
Her dearest wish—to do something, whatever
may be.

Baby

IRENE FUNKEL - Reid Commercial
Swimming 1-2-3; Glee Club 2-3; Declamation 3; Masque & Buskin; "Am I Intruding"; Social Science Club 3; Commercial Club 2-3; Student Council 2; Bonita 1-2-3; Sacred Concert 2.

Reunion 1957-1967

Her air has a meaning, her movement a
grace,
You turn from the fairest to gaze on her
face.

JUNIOR-SENIOR BANQUET

Amid an icy setting was held the annual junior-senior banquet, in the spring of nineteen thirty-one. Our first glimpse of the ice-palace brought into view the shifting colors of the famous Aurora Borealis. To the right of us was seen the lone igloo of some Eskimo family, with a great white bear swinging up to it with cautious step. The deep snow lay before us in a blanket of shimmering light; all about were drifts of snow, and trees laden with icy crystals. The dim lights added to the glimmer and glow of the scene before us.

The seniors and the juniors, the school board, and the teachers were all seated at nine long tables which were decorated with small igloos and candles, carrying out the color scheme of green and white, the senior class colors. A delicious three course dinner was served by waitresses dressed as dainty snow fairies. During the dinner we were entertained with music by Russell Kilgore and Mr. Kenneth Goodrich.

Immediately after the dinner the following program was given, with Mr. H. L. Fisher acting as toastmaster.

Welcome.....	Frank Griggs, Junior Pres.
Response.....	Oscar Dettman, Senior Pres.
Elfin Pictures.....	Mildred Nelson
Byrd Land.....	James Alexander
Aurora Borealis.....	Greta Peterson

We were then invited to the auditorium where we were entertained as follows:

Piano solo.....	Jean Ward
Reading.....	Miss Eloise Harvey
Tap dance.....	Virginia Ruschmeyer

At the conclusion of this program we returned to the gym for the usual dancing which ended a very happy evening.



Juniors vs. Depression

Alleviation of the economic depression has been the most important topic of the day. Therefore we, the esteemed class of 1933, have determined to show what we have done to accomplish this much discussed project. Nearly every Junior has contributed in some small way, but we will mention only those whose services were the most outstanding.

Eddy and Grayce boosted the paper business; they must have used reams of paper writing all those notes.

Dorothy Fisher consumed enough candy bars to keep at least one drug store in business.

The teachers were kept burning the midnight oil trying to find more "ones" to give Donald Lebo and Catherine Cooper.

The amount of gas bought by Johnny Dyer (with Mary's help) did a great deal toward accomplishing our object. Monnie Means also contributed in this way.

The gum business has been greatly aided by the patronage of Jean Fey, who is seldom seen without an ample supply.

"Sandy" has made red ink so much more necessary to the teachers that we can count his services among the most beneficial.

Merle Stowe's services may have covered a short time, but they are too important to be overlooked. That white sweater she wore as yell leader must have helped the cleaning business immensely.

Kenny Mann has begun to keep the school authorities busy supplying him with "B's".

Jeanette Moore and Boyd Pestotnik have given the student body, as a whole, a perfect example of compatability. This state of perfect understanding should serve as a fine pattern for committees who are attempting to "depress depression".

"Swede" Munden, with that physique, has caused many a maiden to resort to buying magazines and newspapers to soothe her broken heart. Vivian Young has aided in the same way by using her charms on the male portion of the school.

The services of the following have not yet been completed: Owen Weeks, gossip editor, and Elinor Doner, who edited a similar column in the Bumble "B", both took great risks. We have heard of many contemplated law suits. If any should materialize it might mean bread and butter for some lawyers.

Ruth Ann Baker has kept the gossips on the job watching to see just whom she will go with next. It has caused many to lose so much sleep that doctor bills have been increased.

Putt Briley has used great amounts of shoe leather walking his girl to and fro.

Ednamae Schimdt can be relied upon to keep clothing stores from going bankrupt. We believe she could open a dress shop with her present supply.

The photographers have been greatly aided by the services of Howard Lyons, whose hobby, collecting photographs, has been so extensively carried out that he has had hundreds developed.

Jerry Shadle, Bob Collins, Paulina Mills, Alice Collins, Ruth Elaine Shadle, and Viola Peters have made Miss Linderblood lie awake nights wondering how to keep them from completely raising the roof fourth period. We think Miss Linderblood will soon need to consult a nerve specialist.

We trust that, due to the efforts of our beloved classmates, we shall soon make an end of depression, and we assure you that their efforts will undoubtedly continue.



SOPHOMORES

Sophomore Birds

Mocking Bird (One who mimicks).....	Dorothy Hilts
Humming Bird (Very small, moves rapidly with much noise).....	John Wilson
Cat Bird (An American song bird, something like mocking-bird).....	Virginia Allen
House Wren (Small singing bird).....	Catherine Jones
Carolina Cuckoo (Bird known for its shrill note).....	Brownie Knezevich
Cedar Bird (A North American bird, showy and beautiful).....	Evelyn Heaps
Oriole (Song bird of perching habits).....	Mary Louise Frampton
Chicken Hawk (One who preys on his fellows).....	Frank Schuster
Blue Warbler (A small bird who warbles or rather plays on a musical instrument).....	Arnold Bell
Horned Owl (One with large head and eyes and nocturnal habits).....	Harry Nettles
Cardinal (A brightly colored song bird).....	Nan Reid
Wild Turkey (A large American bird).....	Wallace Gibson
Peal's Egret Heron (A wading bird found near water; has long neck and legs).....	Bob Laub
Woodpecker (One who climbs trees and is always knocking at something).....	Loran Roe
Wild Canary (A flittering song-bird).....	Dorothy Starks
Parrott (A bird who imitates).....	Harry Wells
Robin (A small European bird).....	Dorothy Frederickson
Blackbird (An English songbird).....	Nina Duckworth
Meadow Lark (An American bird found in the meadows).....	Thelma Nelson
Quail (A game bird, the Bob White).....	Joe Hansen

M. L.

Sophomore Movies

1. A Woman of Experience.....	Arlene Southern
2. Delicious.....	Eila Lee Breedlove
3. Gold Dust Gertie.....	Leona Mae Carpenter
4. Blonde Crazy.....	Billy Hannah
5. Connecticut Yankee.....	Leslia Doran
6. Cock 'o the Air.....	Jimmy Youngren
7. Broad Minded.....	Bill Henry
8. Skippy.....	Ross Morgan
9. Daddy Long Legs.....	Lenard Richman
10. The Public Enemy.....	Billy Westfall
11. A Free Soul.....	Hattie Parrish
12. Platinum Blonde.....	Grace Jane Warner
13. The Champ.....	Kenneth Hartman
14. The Millionaire.....	George Montgomery
15. Nice Women.....	} Emma Abbenseth } Marie Lebo
16. Reducing.....	Ivadel Long
17. Men in her Life.....	Helen Jones
18. Local Boy Makes Good.....	Byron Carlson
19. The Big Shot.....	Jack Myers
20. Dance Team.....	} Margaret Holloman } Lucille Blanchard

E. H.

