

The
SCROLL

1929



EX LIBRIS

George Higgins
1830

George Higgins

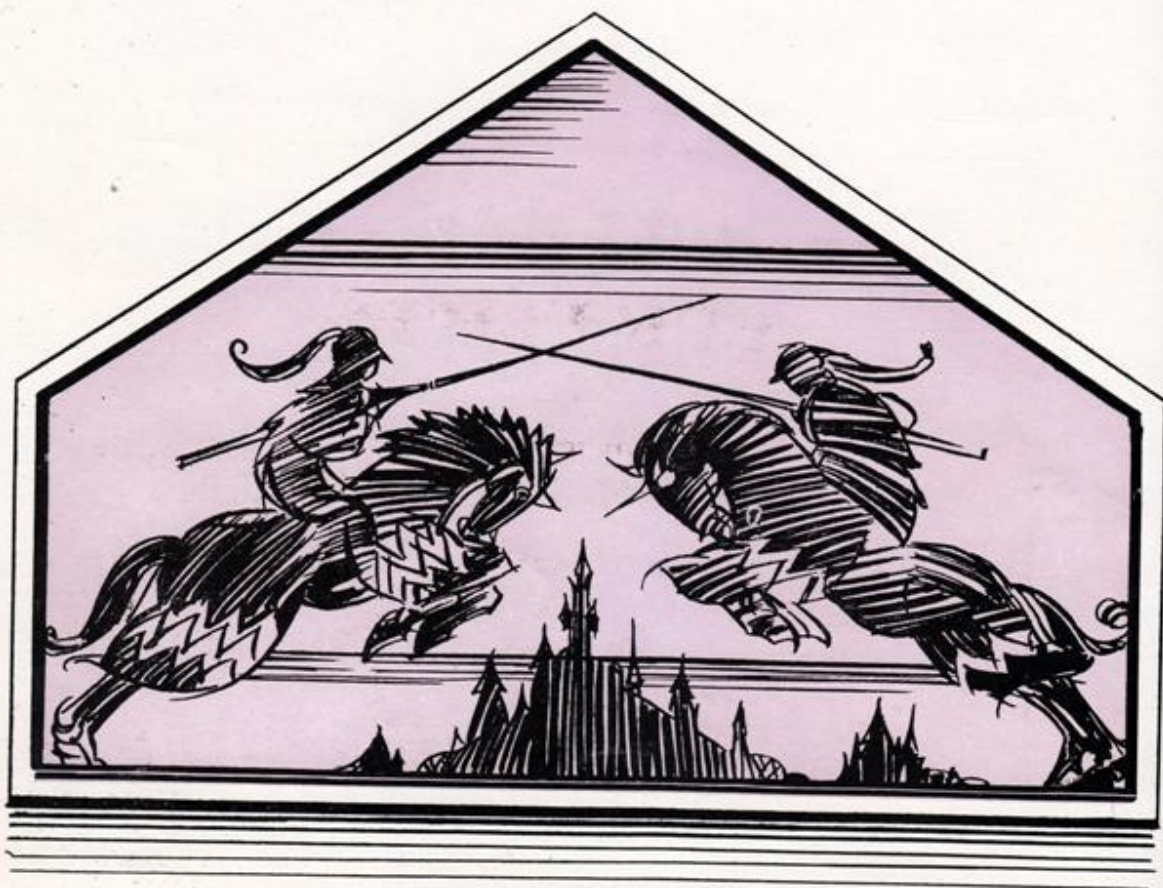
George Higgins

by
George Higgins

The · 1929 · Scroll



Published by the Senior Class of Boone High School



F O R E W O R D

I N the days of Chivalry books were written with much labor in monasteries or, perchance, by some learned doctor and his students at a university. We the class of 1929, have prepared for you our Scroll. Herein are tales of our adventures within the walls set aside for our instruction and learning. It is our hope that the perusal may please you, that you may scan with interest the chronicles of our days in B. H. S. If ever, as you study our Scroll, our theme of knighthood may lead you to more noble endeavor or to greater achievements, our labors have been fruitful.

CONTENTS

ADMINISTRATION

CLASSES

ACTIVITIES

ATHLETICS

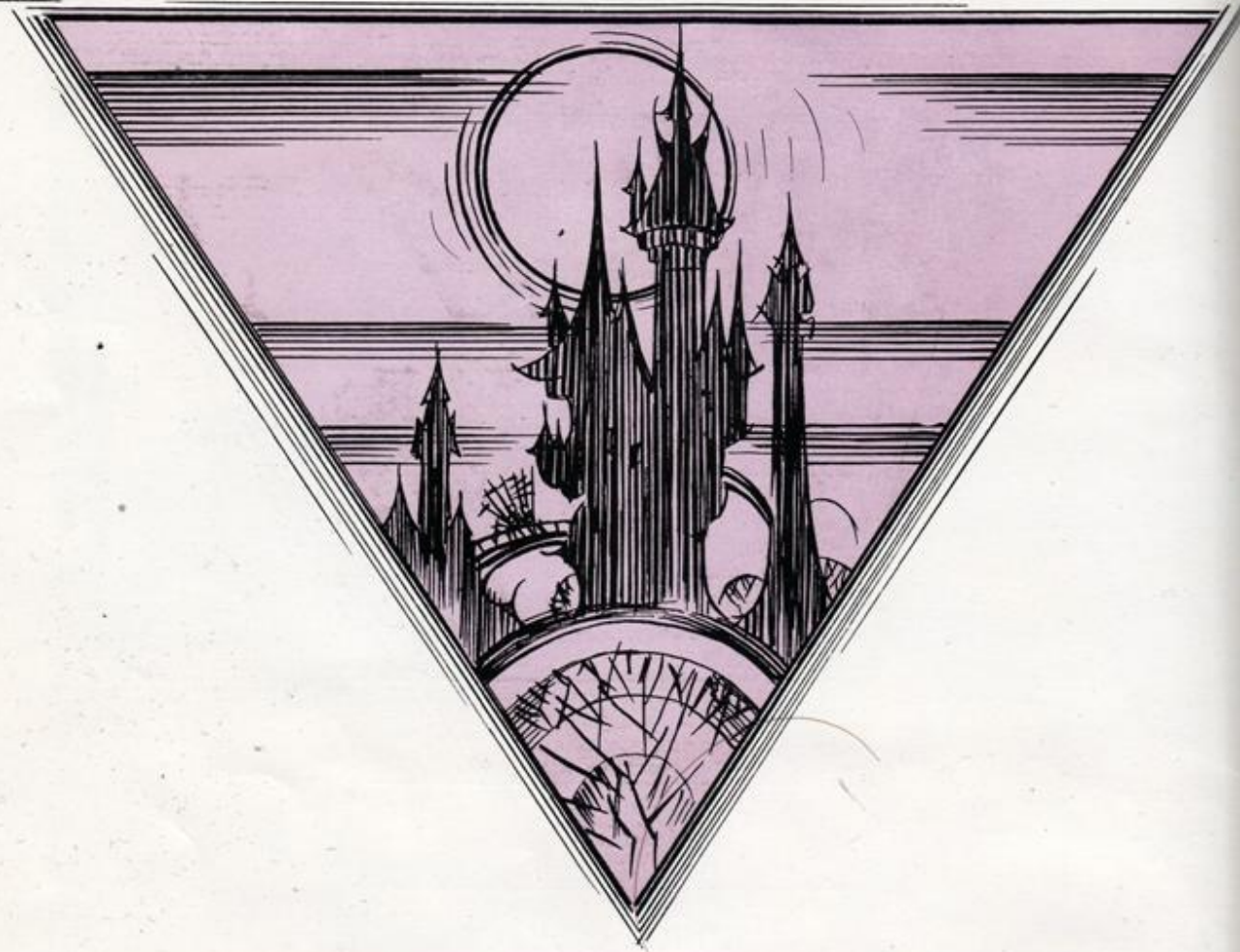
JUNIOR HIGH





SOCIETY

JUNIOR COLLEGE

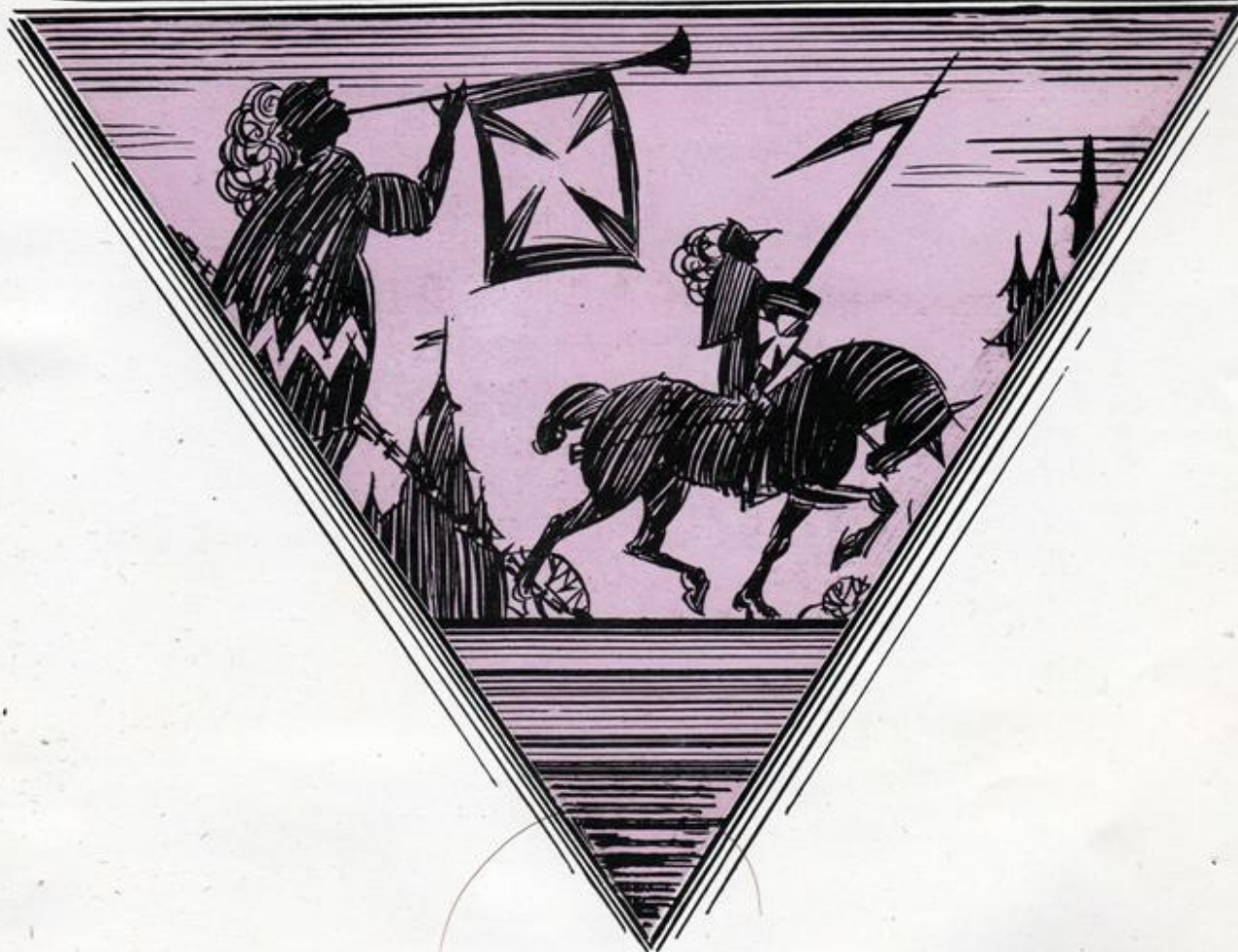
CALENDAR AND JOKES

DEDICATION



THE knights of old went forth to slay the beast, to battle for the right in lands close at home and under eastern skies. The call of the spirit of achievement is heard today. Men and women do brave deeds in their quests of service. With unwearied hands and hearts they labor; at last the baffling problem is solved; the worth-while accomplishment is made. To this Spirit of Conquest,   we, the Class of 1929, dedicate our Scroll.  

ADMINISTRATION





G. S. WOOTEN, Superintendent



H. J. VAN NESS, Principal.

School Board

W. R. Dyer, President

Mrs. R. L. Cooper

Thos. J. Heaps

R. T. Duckworth, Secretary

Elmer Erickson

Claude Haywood

Charles Piper, Treasurer



Anna Crawford



Louise Handy



Grace Slosson



Eula McCreary



Ethel Whitney



Florence Whannel



Ferdinand Daehler



Mona Lovell



Nathan Fields



Josephine Weston



Sara Rhodes



Lydia Rolston





Leola Witter



Karl Longnecker



C.L. Cunningham



Zoe Stevens



Harold Fisher



J.R. Thorngren



Anna Mary Noble



Doris Shaler



J.E. Irwin



Louise Linderblood



Winifred Hall



Sylvia Ferguson

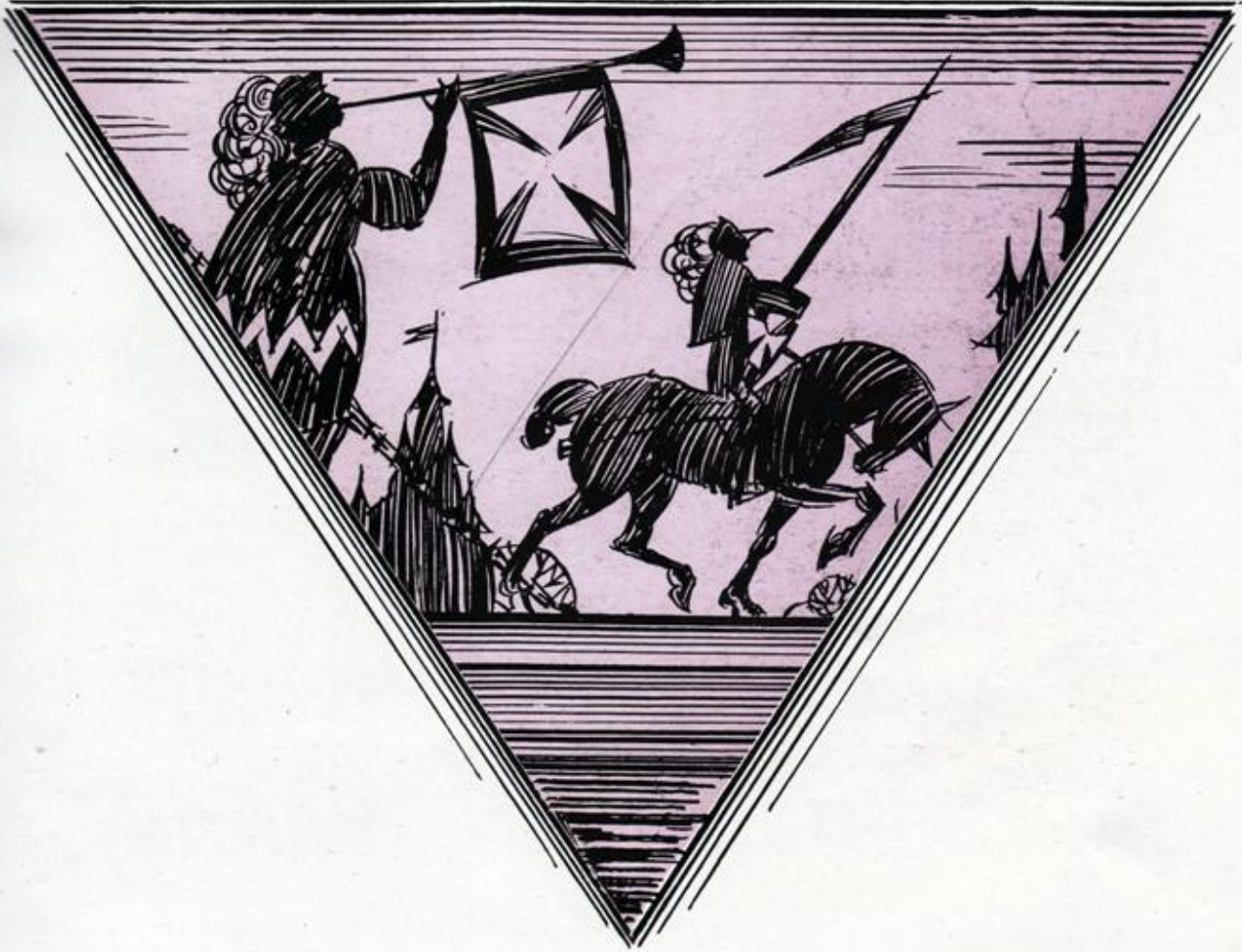


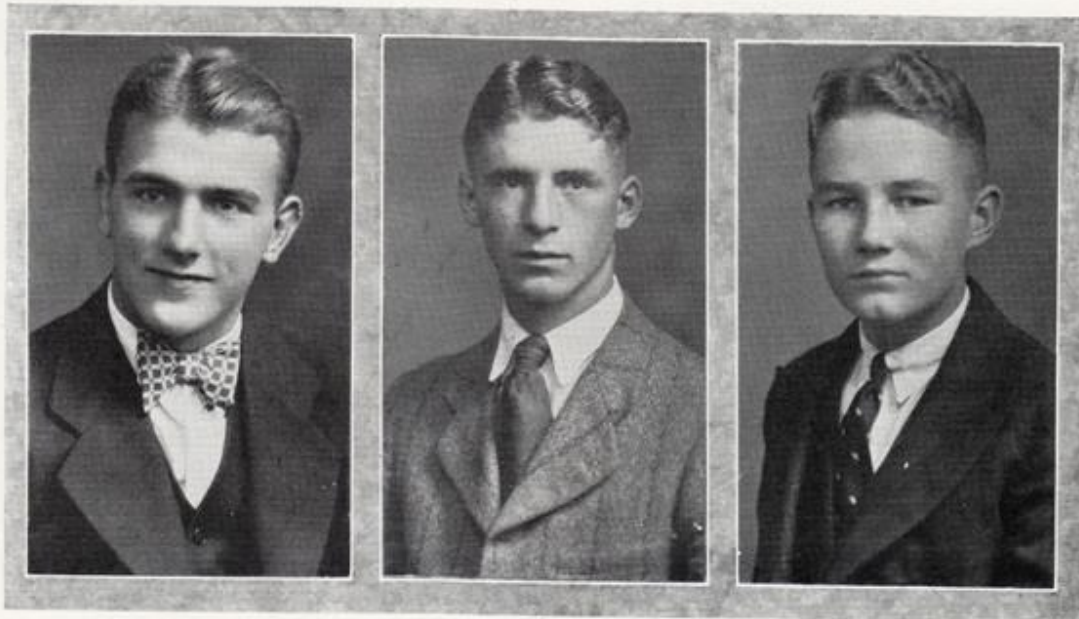
NAMES OF FACULTY NOT APPEARING IN PICTURES:

- | | |
|---------------------|------------------------|
| Miss Nellie Harvey | Miss Stena Hansen |
| Miss Minnie Vannest | Miss Clara Jordan |
| Miss Beulah Harris | Miss Laurel Pascoe |
| Miss Maude Lasher | Mr. Lee Stebbings |
| Mr. Lawrence Evans | Miss Marjorie Flanders |



C L A S S E S





Orville Curry

Willard McCartney

Gene Thorngren

Class Officers

The class of '29 chose for its officers three well-known boys, who are extremely popular and dependable.

Orville Curry, known throughout the state for athletic prowess, and without a doubt one of the best-liked boys in high school, was elected class president. The fact that Orville was not on the list of candidates for the office, but was elected by "scratching ballots," shows how tremendously popular he is.

Willard McCartney, another well-known athlete, served the class as vice-president. "Mac" has been a prominent figure in Boone High athletics for several years, and is admired not only for this, but because of his genial nature.

Gene Thorngren, class secretary and treasurer, is a quiet, good-natured boy who was chosen because of his dependability. Modest and unassuming, Gene works willingly and efficiently for the class in his office.



ZELDA ADES Commercial

Hi-Y-Ettes 1, 2, 3; Social Science Club 3; Commercial club 3; Pepstirs 1, 2, 3; Swimming Meet 2; Swimming Exhibit 2.

Pretty, capable, cheerful—these words alone describe her.

RUTH ALLEN Commercial

Masque & Buskin 2, 3; Hi-Y-Ettes 1, 2, 3; Social Science Club 3; Commercial Club 2, 3; Pepstirs 1, 2, 3.

A smiling, cheerful girl, friendly and well-liked.

ELLSWORTH ALLEN Commercial

Bumble "B" 2; Orchestra 1; Commercial Club Pres. 2; Band 1; Pepstirs.

If confidence in self were gold, he'd roll in wealth.

ELSIE ANDERSON Commercial

Commercial Club 2, 3; Social Science Club 1; Pepstirs 1, 2, 3; Basketball 1, 2, 3; Hi-Y-Ettes 1, 2, 3.

Optimistic, good-looking; a friend worth having.

Loretta Anderson

LORETTA ANDERSON Latin

Glee Club 2, 3; Declamatory 3; Masque & Buskin 2, 3; "Bells of Capistrano"; Hi-Y-Ettes 1; Social Science Club 2, 3.

Quiet, happy, and above all, dependable.

NELLIE ARRASMITH Commercial

Scroll Staff 2, 3; Volley Ball 3; Basketball 3; Hi-Y-Ettes 1, 2; Social Science Club 3; Commercial Club 3; Pepstirs.

If there is work to be done, there's none like her to do it.

MARLOND BALCER Scientific

Class Pres. 2; Football 2, 3; Basketball 3; Track 3; Baseball 1, 2; Class Basketball 1, 2, 3; Glee Club 2.

An endless store of humor is his, and all who meet him feel refreshed.

DONALD BASS Scientific

Basketball 3; Glee Club 2, 3; Masque & Buskin 2, 3; "Tulp Time"; Agri. Club 3.

A serious-minded chap, beloved by all his friends.





1 9 2 9 S c r o l l



LAWRENCE BECKETT Scientific
 Masque and Buskin 2, 3; Social Science Club 3;
 Band 3 (Drum Major); Track 2; Pepstirs 2, 3.
 Friendly and cheery; 'tis joy to be around him.

FLORENCE BOWMAN Commercial
 Masque and Buskin 1, 2, 3; Hi-Y-Ettes 1, 2; Social
 Science Club 2; Commercial Club 1, 2, 3; Pepstirs.
 Her cheerful smile has won a host of friends.

THEODORA BERGLUND Commercial
 Hi-Y-Ettes 1, 2, 3; Commercial Club 2, 3.
 Quiet and unassuming, but a faithful friend.

HOWARD BRAKLOW Scientific
 Scroll 3; Glee Club 2, 3; Masque and Buskin 1, 2,
 3; "Tulip Time"; "Bells of Capistrano"; Hi-Y 1, 2,
 3; Social Science Club 3; Quill and Scroll 3; Pep-
 stirs.
 Genial and dependable, and one whose knowledge of
 financial things is great.

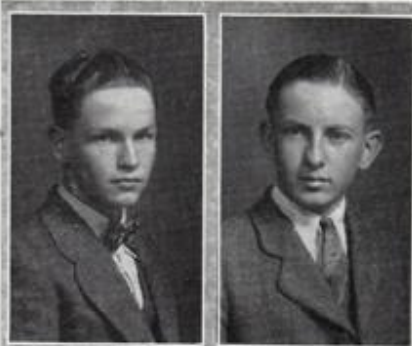
ELDON BRICKER Scientific
 A pleasant-mannered lad; a favorite with all who
 know him.

AGNES BRILEY Scientific
 Glee Club 3; Hi-Y-Ettes 1; Social Science Club 3.
 A willing worker, always eager to do her bit.

LESTER BUTLER Social Science
 Mild in appearance, but a witty chap when friends
 are all about him.

DOROTHY CLAASEN Scientific
 Glee Club 1, 2; Hi-Y-Ettes 1, 2, 3; Social Science
 Club 1, 2.
 Attractive personality and sound qualities make her
 a favorite among acquaintances.





DONALD CLARKE Social Science
 Class Basketball 3; Track 3; HI-Y 3; Aero Club 3;
 Social Science Club 3.
 Happy and friendly, and one who can be relied on.

FRANKLIN CLARK Scientific
 Class Basketball 3; Track 3; HI-Y 3; Social Science
 Club 3.
 He loves his fun but when 'tis time to work he
 puts his whole heart in it.



CHESTER CLARK Scientific
 Football 2, 3; Aero Club 3; Pepstirs.
 The type that loves to work and fashion things
 from wood.

MABLE CLATT Language
 Glee Club 3; Masque and Buskin 2, 3; "Bells of
 Capistrano"; HI-Y-Ettes 1, 2, 3; Pepstirs.
 Her winning ways and good humor are known to all.



DEAN CODDINGTON Scientific
 Football 1, 2, 3; Basketball 1, 2, 3; Social Science
 Club 3; Pepstirs 1, 2, 3; "B" Men's Club; Swim-
 ming 3.
 Newly found in the athletic world, but known for
 capability long ago by friends.

RICHARD CONWAY Scientific
 Agricultural Club 2, 3.
 Eager and willing; a happy soul.



LORAN COLE Scientific
 Agri. Club; Basketball 3; Glee Club 1, 2, 3; Orchestra
 3; Aero Club 3; Operetta 1, 2, 3; Social Science
 Club 3; Band 1, 2, 3; Pep Club 2, 3; Agri. Club 3.
 Humorous and genial, a boon companion to his
 friends.

HAROLD COOPER Commercial
 Swimming 1, 2, 3; Aero Club 3; Commercial Club
 1, 2, 3; "B" Club 1, 2; Radio Club 2, 3.
 A confident, assured young man, whose love of fun
 and gayety is deep.



LUCILLE CORL Normal Training

Hi-Y-Ettes 1; Social Science Club 2, 3; Normal Training Club.
A good student and a better friend.

BURNEIL COUGHENOWER Commercial

Volley Ball 3; Basketball 1, 2, 3; Commercial Club 3; Pepstirs.
As happy as a lark, and full of joy and humor.

WINIFRED CRARY Latin

Swimming 1, 2, 3; Class Basketball 1, 2, 3; Volley Ball 3; Glee Club 2, 3; Masque and Buskin 1, 2, 3; Hi-Y-Ettes 1, 2, 3; Bonita Club 1, 2, 3; Pepstirs 1, 2, 3.
A good sport and a good student, respected by all.

FLORENCE CRESS Commercial

Hi-Y-Ettes 3; Social Science Club 3; Commercial Club 3.

MARGARET CROOKS Language

Bumble "B" 3; Volley Ball 3; Swimming 1, 2; Capt. 3; Basketball 1, 2, 3; Orchestra 1; Declamatory 2; Masque and Buskin 1, 2, 3; Yell Leader 2; "Mother Carey's Chickens"; "Honor Bright"; "Tweedles"; Hi-Y-Ettes 1, 2, 3; Social Science Club 3; Bonita Club 2, Capt. 3; Pepstirs 1, 2, 3; Quill and Scroll 3; French Club 2, 3.
Full of wit and love of humor, she works hard, plays hard, and has countless friends.

WILLA DEAN CURTIS Commercial

Swimming 2, 3; Hi-Y-Ettes 1; Social Science Club 3; Commercial Club 2, 3; Pepstirs.
Small and cute, and a trifle mischievous.

ORVILLE CURRY Scientific

Class Pres. 3; Football 1, 2, 3; Basketball 1, 2, 3; Track 2; Glee Club 3.
Small of stature, but mighty are his deeds; a genial companion, admired by his fellows.

OLIVER CUTLER Commercial

Class Basketball 3; Orchestra 1, 2, 3; Masque & Buskin; Aero Club 3; "Why the Chimes Rang"; Hi-Y 3; Band 1, 2, 3; Pepstirs.
A lover of humor, and a willing worker.





ONA DAWSON Commercial
 Hi-Y-Ettes 1, 2, 3; Social Science Club 2, 3; Commercial Club 2, 3; Pepstirs 1, 2, 3.

Of her, indeed, it might be said that she has qualities sought by all.



JACK DOLL Scientific
 Track 3; Orchestra 2; Aero Club; Hi-Y; Social Science Club; Band 1, 2, 3; Pepstirs; Radio Club; French Club.

Full of droll humor and sly wit; noted for his grotesque cartoons.



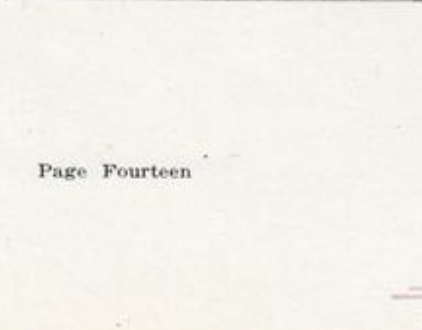
BEATRICE DONALDSON Scientific
 Bumble "B" 3; Hi-Y-Ettes 1, 2, 3; Pepstirs 1, 2, 3.

Quiet, dependable, and studious.



MARGARET DUTTON Normal Training
 Glee Club 1; Hi-Y-Ettes 1; Social Science Club 2; Normal Training Club.

Friends, personality, good qualities, what more could any girl request?



MARION EASTON Scientific
 Bumble "B" Business Manager 3; Basketball 1, 2, 3; Track 2; Glee Club 1; Orchestra 1, 2; Band 1, 2; Masque & Buskin 2; Aero Club 2; Hi-Y 2; Social Science Club 2; Quill and Scroll 1, 2; "B" Men's Club 2.

A joker and comedian, yet still no shirker at his studies.



GRACE EPPERT Commercial
 Hi-Y-Ettes 1, 2, 3.

Somewhat shy, and unobtrusive, but a more faithful friend could not be asked for.

JOSEPHINE ERICKSON Normal Training
 Scroll 3; Glee Club 1; Hi-Y-Ettes 1, 2, 3; Social Science Club 3; Normal Training Club.

Friendly and ambitious, an industrious worker and fast friend.

VIOLET FEY Scientific
 Basketball 1, 2; Capt. 3; Volley Ball 3; Swimming 1, 2; Orchestra 2, 3; Hi-Y-Ettes 2, 3; Social Science Club 3; Pepstirs.

Hers is a merry disposition; and seldom is she aught but smiling.



JANET FLOCKHART

Industrial

Basketball 1; Hi-Y-Ettes 1; Social Science Club 2; Pepstirs.

Not of the bold and blatant type, though always ready for a frolic.

WILBUR FLOCKHART

Scientific

Football 1, 3; Masque & Buskin; Hi-Y 3.

Famed for a dry, contagious humor; a favorite among his fellow-students.

GENEVA FLYNN

Normal Training

Soph. Pres. 1; Hi-Y-Ettes 1; Cab. 2, 3; Social Science Club 3; Normal Training Club 3; Pepstirs.

An excellent student, esteemed by teachers and students.

MILO GARRETT

Scientific

Track 2; Football 2; Orchestra 1, 2; B. H. S. Players 1, 2, 3; Aero Club 3; Band 1, 2.

A cheery, friendly chap, well known for musical ability.

DORIS GATES

Normal Training

Glee Club 1, 2; "Princess Chrysanthemum"; Hi-Y-Ettes 1, 2; Social Science Club 1, 2; Normal Training Club.

Unpretentious, but beloved by those who know her well.

CHARLES GOOD

Scientific

Another one of those who are not loud and noisy, but full of quiet humor and friendliness.

JEANETTE HEDLUND

Normal Training

Social Science Club 3; Normal Training Club 3.

A willing worker, who is admired for her friendliness.

RICHARD HOLCOMB

Scientific

Bumble "B" 2, 3; Track 2, 3; B. H. S. Players 3; Aero Club 3; "Three Wise Fools"; Hi-Y 2, 3; Social Science Club 2, 3; Pepstirs; Radio Club 1; French Club 2.

A humorous chap, and one who enters all things with determination.





MARY JANE HEWITT

Commercial

Class Basketball 1, 2; Scroll 3; Bumble "B" 2; B. H. S. Players 1, 2, 3; "The Finger of God"; Hi-Y-Ettes 1, 2, 3; Social Science Club 2, 3; Commercial Club 1, 2, 3; Pepstirs 2, 3; French Club 2.

She's pretty, capable, friendly, and willing to lend a hand where it is needed.

DOROTHY HONNOLD

Language

Bumble "B" 3; Basketball 1, 2, 3; Glee Club, 1, 2, 3; B. H. S. Players 2, 3; "Tulip Time"; "Adam and Eva"; "H. M. S. Pinafore"; "Bells of Capistrano"; Hi-Y-Ettes 1, 2, 3; Social Science Club 3; Quill & Scroll 3; Pepstirs 2, 3.

Cheery and friendly, as well as extremely studious.



RICHARD HOWE

Scientific

Bumble "B" 3; Class Basketball 1, 2, 3; Track 3; Aero Club 3; Hi-Y 2, 3; Social Science Club 2, 3; Pepstirs; French Club 3; Radio Club 1, 2.

Serious about his studies and all other work, but ready for hilarity when work is done.

CAROL HULTEEN

Commercial

Hi-Y-Ettes 1, 2, 3; Commercial Club 1, 2, 3; Pepstirs 1, 2, 3.

A good student, and a cheerful helper.



DOROTHY HURD

Commercial

Bumble "B"; Class Basketball 1, 2, 3; Glee Club 1, 2, 3; Debate 2; Masque & Buskin 1, 2, 3; "H. M. S. Pinafore"; Hi-Y-Ettes 1, 2, 3; Social Science Club 2; Commercial Club 2, 3; Pepstirs.

Dorothy is a genial person with a talent for commercial work.

DORIS INGLESBY

Commercial

Hi-Y-Ettes 2, 3; Social Science Club 3; Commercial Club 3.

Unpretentious, still her many friends are proud to be her comrades.



WILLIAM JOHNSON

Social Science

His time is spent in study; an earnest worker in all he undertakes.

EUGENE JONTZ

Social Science

Track 2; Glee Club 1, 2, 3; Orchestra 1, 2, 3; Band 1, 2, 3.

Dependable when work is to be done, and happy and cheery when with friends.





ERWIN KEMBLE Scientific

Track 1; Glee Club 1; "Pickles"; Social Science Club 3.

Ready for fun and frolic, but he can, if need be, work with a will.

LORAN KEMMERER Scientific

Football 2, 3; Masque & Buskin 3; Social Science Club 3; "B" Men's Club.

Full of bluff good humor; an athlete of no mean ability.

EUGENE KLINE Scientific

Social Science Club 3.

An earnest, hardworking student who has a warm and friendly nature.

WANDA KLINKER Commercial

Hi-Y-Ettes 3; Social Science Club 3; Commercial Club 3.

Reliable and steady, and of a pleasing disposition.

HARLEY KIRK Scientific

Vice-Pres. 1, 2; Scroll 3; Class Basketball 3; Masque & Buskin 2, 3; Aero Club 3; Radio Club 1, 2; Hi-Y 2, 3; Pepstirs 1, 2, 3.

His good-nature has won him countless friends.

CHESTER KNUDSEN Scientific

Football 3; Swimming 1, 2, 3; Pepstirs.

Friendly, happy, and quite athletically inclined.

JEANETTE LARSON Commercial

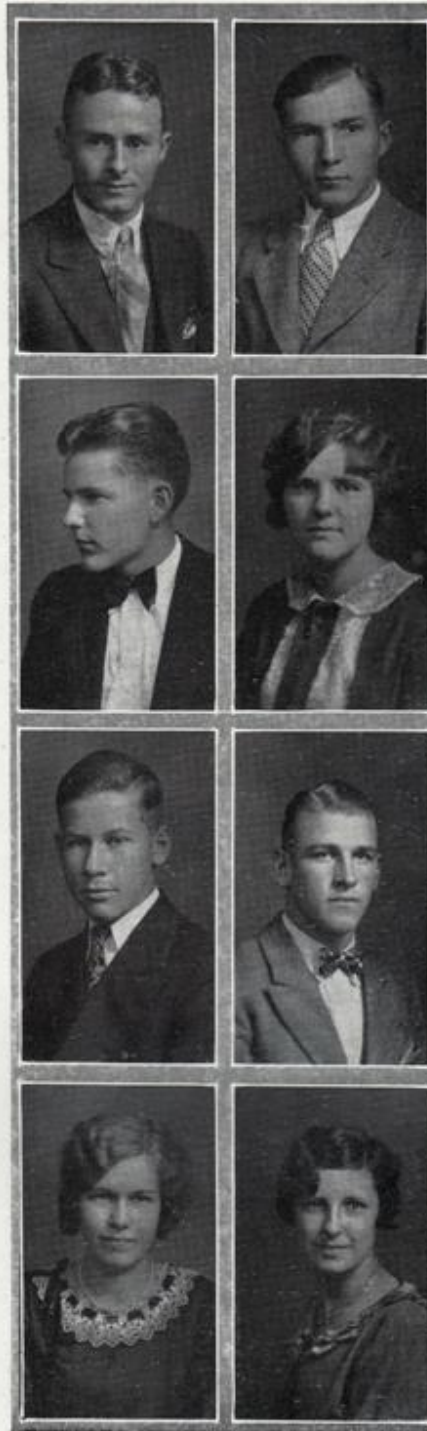
Glee Club 1, 2, 3; "Bells of Capistrano"; Hi-Y-Ettes 1, 2, 3; Social Science Club 2, 3; Commercial Club 1, 2, 3.

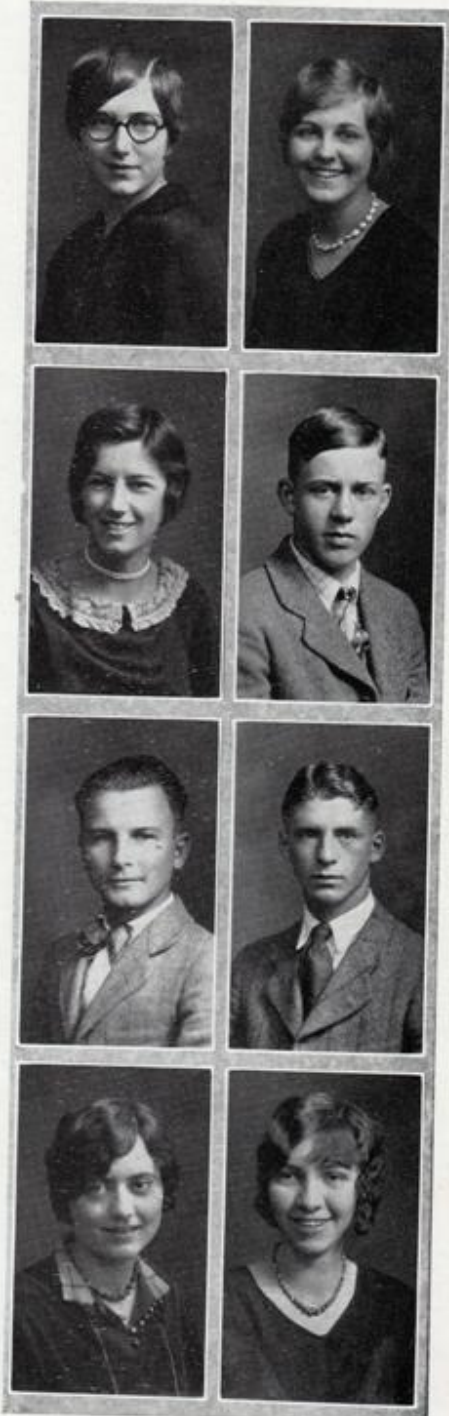
She is a girl who is not boastful of qualities of which many might be over-proud.

HELEN LA SHELLE Latin

Social Science Club 3; Masque & Buskin 1, 2, 3; Pepstirs 1, 2, 3; Glee Club 2, 3; Quill and Scroll 3; Bumble "B" 3; Declamatory 3; "Mother Carey's Chickens"; "Knave of Hearts"; "Bells of Capistrano."

A gay, talkative young maid who completely masters all of her studies.





FLORENCE LEBO Latin
 Scroll 3; Orchestra 1, 2, 3; HI-Y-Ettes 1, 2, 3;
 Social Science Club 3.
 Her work is always conscientiously done, and shows
 the worth of the one who does it.

MABLE LIDELL Commercial
 Masque & Buskin, HI-Y-Ettes 2, 3; Social Science
 Club 3; Commercial Club 2, 3.
 Attractive, blonde, and friendly; the type ('tis said)
 that gentlemen prefer.

MILDRED LILYARD Commercial
 Basketball 1, 2, 3; Commercial Club 3; Pepstirs.
 Her capability is her chief asset.

WILLIAM McALPINE Scientific
 Pepstirs 1, 2, 3; Class Basketball 3.
 Steady, and reliable; he has a store of quiet humor
 which his friends delight in.

AUSTIN McCALL Scientific
 Football 1, 2; Glee Club 1, 2, 3; "Tulip Time";
 "Bells of Capistrano"; HI-Y 2; Treas. 3; Social
 Science Club 2, 3; Commercial Club 2, 3.
 A steady, quiet, courteous boy who impresses all
 with his dependability.

WILLARD McARTNEY Scientific
 Vice-Pres. Sr. Class; Track 2; Class Track 2;
 Basketball 1, 2, 3; Football 1, 2, 3; Tennis 1, 2, 3;
 Trainer 2; B. H. S. Players.
 Athletically inclined, but comrades like him for his
 winning personality.

MARGUERITE McCOY Social Science
 Social Science Club 2; Girls' Basketball 3.
 Her lack of boldness is just one of many things
 for which she is admired.

EULA McFARLAND Commercial
 Glee Club 1, 3; Social Science 3; Commercial Club 3.
 A cheery, serene nature such as hers is much to
 be desired.



AGNES McGEHEE Social Science

Hi-Y-Ettes 1, 2, 3; Pepstirs.

A carefree, laughing, happy girl, beloved because she will not be downhearted.

MARY MAGNUSON Commercial

Social Science Club 3; Commercial Club 2, 3.

Happy and pleasant-mannered, the type of girl that all respect.

BRADFORD MEANS Scientific

Football 2, 3; Glee Club 1, 2, 3; Orchestra 1, 2, 3; Masque & Buskin 1, 2, 3; Aero Club 2, 3; "H. M. S. Pinafore"; "Tulip Time"; "Bells of Capistrano"; "Mother Carey's Chickens"; Hi-Y 2; Social Science Club 3; Band 1, 2, 3; Pepstirs 3; French Club 2, 3; "Honor Bright"; "Tweedles"; "Why the Chimes Rang".

He has the ability to make his fellows laugh and forget what cares they have.

ALICE MENZIES Commercial

Commercial Club 2, 3; Pepstirs 1, 2, 3.

A small, petite, and dainty miss, who works with care and has unnumbered friends.

LEOLA MILES Commercial

Commercial Club 2, 3.

Her nimble fingers seem to be most at ease when flying over a typewriter's keys.

DONALD MILLER Scientific

Class Basketball 1, 2, 3; Track 3; Masque & Buskin; Aero Club 3; Hi-Y 2; Social Science Club 3.

Dry wit is his to use at will, and associates delight in his sly jokes.

GEORGE MILLER 1930

MARIA MINDEMAN Normal Training

Social Science Club 3; Normal Training Club.

A quiet girl and a worthwhile companion.





LORAN MONDT

Commercial

Student Manager; Class Basketball 1, 2, 3; Glee Club 2, 3; B. H. S. Players; "Tulip Time"; "Adam and Eva"; "Spreading the News"; "Bells of Capistrano"; Social Science Club 3; Commercial Club 2, 3; Pepstirs; B. H. S. Quartette.

Good-looking and talented, he is well-known and liked by all.

LOWELL MORRIS

Normal Training

Sec.-Treas. 2; Football 1, 3; Basketball 1; Track 2, 3; Glee Club 1, 2, 3; Orchestra 1, 2, 3; B. H. S. Players 1, 2, 3; "Tulip Time"; "In Walked Jimmy"; "H. M. S. Pinafore"; "Adam and Eva"; "Three Wise Fools"; "Bells of Capistrano"; Social Science Club 3; Band 1, 2, 3; Normal Training Club.

A good-humored, well-liked fellow who's at ease with friends, or on the stage.

IOLA MOSHER

Commercial

Commercial Club 1, 2.

Her perseverance and quiet determination win the admiration of those who know her.

EDYTHE MUDGE

Social Science

Glee Club 3.

Here is a gay and happy spirit; dull care does not oppress her.

JOHN MOSMAN

Scientific

Glee Club 3.

A dependable fellow, quietly humorous.

GEORGE MOSMAN

Scientific

A calm, serene, good-natured chap.

WILLIAM MUELLER

Commercial

Track 2, 3; Class Basketball 3; Commercial Club 3.

A quiet, happy, hard-working boy, content to do his work the way it should be done.

JUNIOR MUMMEY

Scientific

Swimming 1, 2, 3; Hi-Y 2; Bonita Club 2.

His smile is known and loved by all his friends; in him all can find a faithful comrade.



CLARA MURPHY

Social Science

Glee Club ; Social Science Club 3; Pepstirs.

Warm-hearted and amiable, she has a host of friends.

JACK MUSTAPHA

Scientific

Basketball 1, 2, 3; Football 1, 2, 3; Track 2; Class Basketball 1, 2, 3; "B" Men's Club.

A hardy battler, whose determination and clear thinking have made him an athlete to be admired.

ELEANOR MYERS

Commercial

Bumble "B" 2; Social Science Club 3; Commercial Club 1, 2, 3; Pepstir.

She has the confidence in self and in her capability to perform her tasks correctly.

VIOLET MYERS

Commercial

Social Science Club 2.

As modest and shy as her name implies.

JACK NELSON

Scientific

Social Science Club 3; B. H. S. Players 1, 2, 3; Aero Club 3; Radio Club 1, 2; Hi-Y- 3; Pepstir; Stage Electrician 1, 2, 3.

His is the power of leadership, the ability to plan and execute his plans with skill.

ELSIE NYSTROM

Commercial

Social Science Club 3; Commercial Club 3.

To work, and do that work right well is satisfaction to her type.

LEAH NEWCOMB

Commercial

Hi-Y-Ettes 1, 2, 3; Commercial Club 1, 2, 3.

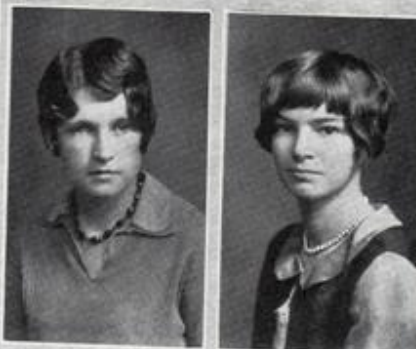
Small and quiet; a friend to be esteemed.

LYLIA NEWCOMB

Commercial

Hi-Y-Ettes 1, 2, 3; Commercial Club 1, 2, 3.

A steady worker, and one who's always cheerful and content.





MARY LOUISE O'CONNELL Commercial
Basketball 1, 2, 3; Commercial Club 2, 3.

A friendly, unassuming girl, who works efficiently and willingly.

JEANETTE ORR Commercial
Glee Club 3; Hi-Y-Ettes 1, 2; Commercial Club 2, 3-Pres.

She has a winning personality, and consequently many friends.

ERNEST OWENS Commercial
Basketball 2, 3; Track 2, 3; Glee Club; "Tulip Time"; Commercial Club; Band; Pepstir.

He is a happy, well-liked boy, skilled in sports which demand clear-thinking.

MARY ANN PARKER Commercial
Social Science Club 3; Commercial Club 3; Pepstir.

Her sunny smile has won her countless friends, for few indeed are they with such a cheery disposition.

RECTOR PARKS Industrial
Class Basketball 1, 2; Track 2; Basketball 2; Football 2; Hi-Y 3; Social Science Club 3; "B" Men's Club.

Carefree and heedless of misfortune.

ROBERT PAYNE Social Science
Aero Club 3; Hi-Y 3; Social Science Club 3; Agr. 3.

A red-head, who belies tradition and is a friendly chap instead of loving strife.

FERN PETERSON Latin
Glee Club 1, 2, 3; Masque & Buskin; "Tulip Time"; "Bells of Capistrano"; "Why the Chimes Rang"; Hi-Y-Ettes 3; Social Science Club 2, 3.

Comeliness, brains, and a beautiful voice combine to make her one to be admired.

HELEN PETERSON Commercial
Typist Bumble "B" 1, 2, 3; Scroll Staff 3; Hi-Y-Ettes 1, 2, 3; Commercial Club 2, 3.

A cheerful disposition and willingness to help have gained for her an enviable reputation.





MARJORIE PETERSON

Scientific

Editor Bumble "B" 3; Class Basketball 2, 3; Glee Club 2; Masque & Buskin 1, 2; "Bells of Capistrano"; "Honor Bright"; Hi-Y-Ettes 1; Social Science Club 3; Quill and Scroll 2, 3; Pepstirs; Yell Leader 2, 3.

Here's a girl who is known to all alike for capability and pleasant disposition.

MILDRED PESTOTNIK

Latin

Bumble "B" 3; Hi-Y-Ettes 2, 3; Social Science Club 2; Quill and Scroll 3.

Her studies do not take up all her time, for she is a faithful worker on the Bumble "B".

VERNA PHIPPS

Normal Training

Normal Training Club 3.

Quiet, but much admired by those who know her well.

MILDRED POTTS

Normal Training

Basketball 1, 2, 3; Swimming 1, 2, 3; Volley Ball 1, 2; Hi-Y-Ettes 1, 2, 3; Social Science Club 2; Bonita Club 1, 2, 3; Normal Training Club.

A gay, fun-loving, happy girl, whose loyalty to school and friends is steadfast.

JOHN POWERS

Scientific

Swimming 1, 2; Glee Club 1; Aero Club 3; Social Science Club 3; French Club 2; Radio Club 2; Pepstirs.

A somewhat quiet, unassuming fellow who is loved by friends for wit and cheeriness.

BERNICE PRICE

Commercial

Hi-Y-Ettes 2, 3; Commercial Club 1, 2, 3.

A dependable worker, and a happy, amiable companion.

MANTFORD PRICE

Scientific

Swimming 1.

Likeable in every way; he is a determined worker, respected, and admired.

RAYMOND ROSE

1930





JANETTE ROSS

Her willingness to perform her every task with all her ability has earned her many friends.

LLOYD ROSS

Social Science

Aero Club 3; Hi-Y 3; Social Science 3; Band 3.

He, too, is the quiet type, that performs his work and glories in its doing.

ETHEL RUBINSON

Language

Bumble "B" 1; Scroll Staff 3; Swimming 1, 2, 3; Volley Ball 3; Glee Club 1, 2, 3; Declamatory 3; Masque & Buskin 1, 2, 3; "Bells of Capistrano"; Hi-Y-Ettes 1, 2, 3; Social Science Club 2, 3; Pepstirs.

An agile brain and genial spirit are attributes of which she may be proud.

HENRY RUBINSON

Commercial

Track; Aero Club 3.

His is the determined dauntless spirit, which, heedless of all obstacles, fights on to its objective.

RUTH SCHOLLMMEYER

Normal Training

Basketball 1, 2; Glee Club 3; Orchestra 1, 2, 3; Declamatory 3; Hi-Y-Ettes 3; Social Science Club 3; Normal Training Club.

A cheerful girl, who works right well, and is happy when the work is well done.

CLINTON SANDEEN

Social Science

Football 2; Track Trainer 2; Hi-Y 2; Social Science Club 1, 2, 3; Yell Leader 3; Pepstirs 1, 2, 3; "B" Men's Club 2, 3.

His wit is boundless, and his tongue is ever ready with some quaint remark.

DOROTHY SCHMIDT

Latin

Bumble "B" 3; Basketball 1, 2; Glee Club 2, 3; Masque & Buskin 1, 2, 3; "Bells of Capistrano"; Hi-Y-Ettes 1, 2; Social Science Club 3; Quill and Scroll 3; Pepstirs 1, 2, 3.

A girl who has a wealth of qualities that serve to make her charming and petite.

ALYCE SCHROEDER

Social Science

Basketball 1, 2, 3; Glee Club 2, 3; Masque & Buskin 1, 2, 3; "Bells of Capistrano"; "Honor Bright"; Hi-Y-Ettes 3; Social Science Club 2, 3; Pepstirs 1, 2, 3.

Her eyes are always smiling, and, for her, life seems a merry lark.





MAURICE SHADLE

Social Science

Bumble "B": Football 3; Track 3; Glee Club 1, 2; Masque & Buskin; "Honor Bright"; "Tweedles"; "Tulip Time"; Social Science Club 3; Band 2; Pepstirs, Pres.; Press Agent for Athletics.

His humor and love of fun, as well as capability, have won a thousand friends.

EDWARD SELLERS

Scientific

Class Basketball 2, 3; Football 2, 3; Class Baseball 2, 3; Pepstirs; "B" Men's Club.

He revels in a merry brawl, but, when determined, works with all his heart.

ETHEL SHAFFER

Commercial

Hi-Y-Ettes 1, 2, 3; Social Science Club 2; Commercial Club 2, 3; Pepstirs 2, 3.

Good-humored and well-liked; her friends are many, and most rightly so.

MILDRED SHAFFER

Commercial

Social Science Club 1; Commercial Club 1, 2.

She is the quiet type of girl, whose friends are as loyal to her as she is to them.

WILLARD SHEDD

Social Science

Football 1, 2; Track 3; Pepstirs; Class Basketball 1, 2, 3.

Friendly, faithful to his friends, he is well-liked by all of his acquaintances.

OSCAR SHEETZ

Scientific

Swimming 1; Radio Club 1; Hi-Y 1, 2, 3; Social Science Club 3; Football Yell Leader 3.

For him joyous play appeals far more than work, but, if work he must, he does it with a will.

JACK SHELLEY

Scientific

Bumble "B" 1; Scroll 3; Class Basketball 3; Glee Club 3; Masque & Buskin 2, 3; "Bells of Capistrano"; "Why the Chimes Rang"; "Tweedles"; Hi-Y 3; Pepstirs 1, 2, 3; Yell Leader 3.

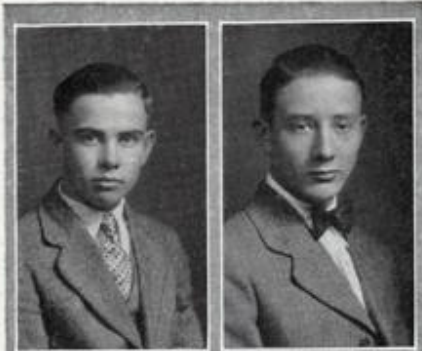
If good grades bring success, he will get his share, we guess.

DALE SMALL

Orchestra 2; Debate 2, 3; Social Science Club 2, 3; Band 2.

His tongue is like an orator's, and his words flow with equal ease.





GEORGE SMITH

Scientific

Class Basketball 1, 2; Class Baseball 1, 2, 3; Pepstirs.

Small in stature, but a mighty man when agile brain-work or skilled hands are needed.



HELEN SOUTHARD

Normal Training

Orchestra 1, 2; Hi-Y-Ettes 1, 2, 3; Social Science Club 3; Pepstirs; Normal Training Club 3.

She is a studious, quiet girl, who performs all tasks in easy fashion.



RUSSELL SPETHE

Scientific

Track; Orchestra 1, 2; Aero Club 1, 2, 3; Hi-Y 3; Social Science Club 2, 3; Band 1, 2.

His part in any work is always done as it should be, but it is not his nature to be over-proud of self.

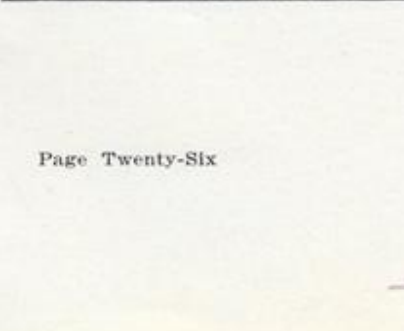


FLORENCE SPONG

Commercial

Basketball; Swimming; Volley Ball; Glee Club; Hi-Y-Ettes; Social Science Club; Commercial Club.

A pleasant, quiet-mannered girl, both good to look upon and good to have for friend.



LAURA SUNDELL

Latin

Basketball 2, 3; Volley Ball 3; Declamatory 2, 3; Hi-Y-Ettes 2, 3; Social Science Club 3; Normal Training Club 3.

A good companion and no shirker; a pleasant girl indeed.



LOIS SUNDEAN

Latin

Scroll 3; Glee Club 3; "Bells of Capistrano"; Hi-Y-Ettes 1, 2, 3.

Her love of beauty is expressed by pictures drawn with skillful hands.

MILDRED SUNDEAN

Scientific

Sec. Junior Class 2; Glee Club 2, 3; "Bells of Capistrano"; Hi-Y-Ettes 1, 2, 3; Pepstirs.

A sweet and gentle nature hers, that seems to find most joy in helping others.



FRANK F. SUNSTRÖM

Scientific

Treas. Junior Class 2; Bumble "B" 3; Swimming 1, 2, 3; Glee Club 1, 2, 3; B. H. S. Players 1, 2, 3; Aero Club 3; "Pinafore"; "Tulip Time"; "Bells of Capistrano"; Bonita Club 3; Pepstirs 1, 2, 3.

Willing to work when work is needed, but most content when mischief's in the air.

CLARE SWARTZ

Scientific

Hi-Y 1; Social Science Club 1, 2.

He revels in one long play-time, but somehow finds a time to work, as well.

MARY CAROLINE STARK

Commercial

B. H. S. Players; "Three Wise Fools"; Hi-Y-Ettes 2, 3; Social Science Club 3; Commercial Club 2, 3; Pepstirs.

Her voice, when lifted high in song, is sweet to hear, and she herself is good to look upon.

GENE THORNGREN

Social Science

Senior Sec'y 3; Orchestra 1, 2, 3; Aera Club 3; "Three Wise Fools"; Hi-Y 3; Social Science Club 3; Band 1, 2, 3.

He is utterly oblivious of the admiration which his good looks and keen mind excite in the fair sex.

FLORENCE TILLSON

Arts and Crafts

Bumble "B"; Glee Club 1, 2; Social Science Club 1, 2.

They say she wields a facile pen.

KERMIT TRULIN

Commercial

Commercial Club 2, 3; Pepstirs.

To strangers he appears most quiet, but friends know him as merry and good humored.

CARL VON KROG

Commercial

Football 1, 2, 3; Class Basketball 1, 2, 3; Hi-Y 1, 2, 3; Commercial Club 2, 3; Tennis 2, 3.

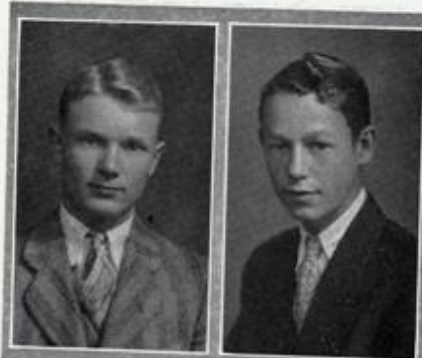
A breezy, merry fellow, who worries little o'er tomorrow's cares.

MARVIN WEIR

Scientific

Class Basketball 2, 3; Social Science Club 2.

A friendly, cheerful companion.





JAMES WESTER

Scientific

Class Basketball 2, 3; Swimming 1, 2; Masque & Buskin; Aero Club 3; HI-Y 3; Radio Club 1, 2.

A chap who, in life, mixes work and play in equal parts.

ARTHUR WHITE

Scientific

Football 1, 2, 3; Basketball 1, 2; Aero Club 3; "B" Men's Club 1, 2, 3.

Happy and full of humor; but mighty in his deeds when on the football field.

VIVIAN WILSON

Normal Training

Normal Training Club.

A pleasant-humored, soft-voiced girl, whose studies are her chief concern.

ELIZABETH WIRTZ

Social Science

Basketball 2, 3; Volley Ball; Swimming Demonstration; Glee Club 2, 3; "Bells of Capistrano".

Her type it is that is most faithful to its friends.

LOIS ZENOR

Commercial

Orchestra 1, 2, 3; Masque & Buskin 1, 2, 3; HI-Yettes 1, 2; Peñstirs 1, 2, 3.

A pretty, dashing brunette who always seems to be happy.

Class Poem

KNIGHTHOOD—THEN AND NOW.

A knight's keen love of courtesy,
And courage, strong and wild,
His gentleness and helpfulness,
And honor undefiled—

Should strike a place in modern hearts—
Who knows? Perhaps they do.
We Seniors may have been inspired
To keep their watchwords true.

It has been done in early days,
Why can't we do it now?
We have the will, there is a way—
Our School has taught us how.
—Willadean Curtis.





1 9 2 9 5 2 0 6 1



Class Will

We, the class of 1929, Boone High School, city of Boone, County of Boone, and State of Iowa, being of a sound mind, reason, memory and understanding, do make, declare, and publish this, our last will and testament, and hereby revoke all former wills made by us.

We do hereby appoint and name our beloved friends, the Juniors, sole executors of this, our last will and testament and request that no bond of any sort be required of them in their execution.

First: To the class of 1930 we leave possession of (as far as they are capable) all vacancies on athletic teams, glee clubs, annual staff and Bumble "B", necessitated by our departure.

To the class of 1931 we leave our social privileges and standings, of which we think they are greatly in need.

Second: To Dorothy Lidell we give Helen Peterson's stenographic ability.

To Donald Duncan we bequeath Jack Shelley's seven dates a week.

To Dorothea Linn we give Carroll Hulteen's recipe for growing thin.

Orville Curry's athletic ability we give to "Bill" Rule.

To Harriet Mondt we give Agnes McGehee's quiet (?) disposition.

To Arnold Olson we bequeath "Musty's" realization that life is a short time between shaves.

To Thora Barrett we give Mary Stark's ability as an opera singer.

To Catherine Fletcher we give Dorothy Hurd's vamping power.

To Gertrude Cordts we give Edythe Mudge's art of make-up.

To Noel Morgan we bequeath Oscar Sheetz's ability to spill acids in Chemistry.

To George Higgins we give Maurice Shadle's long line of "gab."

To Dwight Sattler we bequeath Marlon'd Balcer's book on "How to make a Hit with Women."

To Loran Lair we give Marion Easton's gum chewing ability.

To Dorothy McCaskey we give Margaret Crooks' popularity.

To William Jacobson we give Loran Mond't black curly hair.

Third: To our beloved teachers, we give and bequeath a sincere wish for quiet and peaceful classrooms after our departure.

To Miss Morgan we give all the pencils that are found lying around, after we are gone, in part payment for the ones she used in making out yellow admits and tardy slips.

To the entire student body we leave our success, as a definite goal to strive for.

In witness thereof, we, the class of 1929, the testators, have set our hand and seal to this, our last Will and Testament, this seventh day of June, in the year of our Lord, one thousand nine hundred and twenty-nine.

Witness:

Helen Peterson.
Mary Jane Hewitt.

Class of 1929.

Lawyer:
Theodora Berglund





Prophecy

DIARY OF PLUTO IN THE YEAR 1959

Jan. 1. A boatload of Boone residents arrived today, among them Fern Peterson, Helen Peterson and Marjorie Peterson. Marjorie immediately took charge of the "Hadeo Journal" and its sizzling. Fern's literary ability and Helen's stenographic skill make them able assistants.

Jan. 2. A bunch of chorus girls: Edith Mudge, Dorothy Hurd, Bernice Price, Eula McFarland, Mary Magnusson, Dorothy Claasen, and Clara Murphy, were delighted today to find an old friend here, Henry Rubinson, the big butter and egg man.

Jan. 3. I wish a capitalist would show up! I want to start a fork factory. Four coal miners today: Eldon Bricker, Jack Doll, Charles Good, and Robert Payne, and no forks!

Jan. 4. Hurrah! A capitalist, Jack Shelley, arrives. They say he made all his money with a hot air factory, when on earth.

Jan. 5. More war! Married people are arriving: Karl Von Krog and his wife, formerly Florence Spong, Mrs. Agnes Eriley Clark and Franklin, Lucille Corl Garrett and her henpecked husband, Milo.

Jan. 6. A whole circus troop today—mostly monkeys. Among the performers are Ernest Owens, the fat man; Bradford Means, the dog-faced boy; Lois and Mildred Sundeau, the Siamese twins; Junior Mummey, the human fish; Edwin Kemble, the strong man; Helen La Shelle, "the greatest barker on earth," she never runs down; Austin McCall, largest giant; Mildred Lillyard, Mable Lidell, Ethel Rubinson, Verna Phipps, Mildred Potts, and Elsie Nystrom—all Hula dancers; Geerge Miller, heavyweight wrestling champ.; Loran Mondt, monkey caretaker; Lowell Morris, bandmaster; Rector Parks, fire eater; William McAlpine, lion tamer; Doris Inglesby, and Don Miller, trapeze performers, and James Wester, tight wire walker.

Jan. 9. Lloyd Ross came in today with his Physics book and tried to tell me how to put this fire out. Jack "Lindy" Nelson wanted to bring in his plane. I'll run my own house!

Jan. 10. Zelda Ades, owner of "Ades Beauty Parlor," and her whole force were shot by an irate customer today; they arrived here in a body. They were former friends of mine: Florence Bowman, Ruth Allen, and Willa Dean Curtis, marcel artists; also Art White and Oscar Sheets, manicurists.

Jan. 11. My John! What's this dump coming to? Nellie Arrasmith and her A. M. E. quartet: Josephine Erickson, Wilbur Flockhart, Loran Kemmerer, and Alice Menzies, came down here after being expelled from heaven for too much racket.

Jan. 12. I laid off today. A whole army of Frigidaire saleswomen came down, and tried to run me out of business. They were Jeanette Larson, Florence Lebo, Marguerite McCoy, and Agnes McGehee.

Jan. 13. Sent Richard Holcomb up after sinners and he brought back two hashers: Mary Jane Hewitt and Wanda Klinker. Their line was too greasy, so I sent them back.

Jan. 14. Maria Mindeman, Leola Miles, and Donald Clarke tried to sell me an elevator, and I bought one that just runs downward.

Jan. 15. A bunch of angels flew down from heaven in their flowing robes: Dean Coddington, Eleanor Myers, John Mosman, Violet Myers, Leah and Lylia Newcomb, and Mary Louise O'Connell. They took some of my best devils back: Jeanette Orr, Corwin Snyder, Mary Ann Parker, Mildred Pestotnik, Mantford Price, Raymond Rose, and Ruth Schollmeyer.

Jan. 16. Mary Stark came down here to see Mac, but she didn't stay long.

Jan. 17. Ethel and Mildred Shaeffer were selling horns and red suits at reduced prices. I bought all they had.

Jan. 18. Three S's: Russell Spathe, Helen Spurgeon, and Helen Southard drove their Studebaker in today. I put them to selling salt.





DIARY OF ST. PETER—1960.

March 4. Land office business today—checked in a whole bevy of “has-been” business people: Elsie Anderson, a school teacher; Donald Bass, a quack doctor; Loran Cole, mayor of Ogden; Mable Clatt, caretaker for blind fish; George Mosman, chemist, who invented colored water for fish bowls; John Powers, lawyer in Reno; Jeanette Ross, maid to Pres. Kermit Trulin of the “Eatet Quick Restaurant”; William Mueller, a banjo tuner; Ellsworth Allen, traveling salesman; and Richard Howe, an egg tester. Business is picking up here.

March 5. Chester Knudson and his rowdy gangsters forced their way in this morning. Harley Kirk, Howard Braklow, Donald Clarke, Harold Cooper, Dale Small, Eugent Jontz, and Lester Butler composed his gang.

March 6. The prohibition agents: Curry, Mustapha and McCartney arrested Gene Thorngren today. He smuggled two bottles of lemon pop in yesterday, and claimed to Gabriel that they would give him lovely visions for a week.

March 7. Sixteen harps broken today; Marvin Weir, George Smith, and Edward Sellers started a ball game and were using them for bats.

March 9. Started a factory today to make halos out of barrel hoops. Burnell Coughenower, manager; Florence Cress, Oliver Cutler, Ona Dawson, Grace Eppert, and William Johnson, assistants.

March 10. Eugene Kline was found hiding a billiard table behind a cloud; therefore, I sent him down to visit Pluto.

1965.

Following are records and history of the newly formed colony, “Uphigher,” which was started because some members were too good to remain in heaven. This colony is situated on the Planet Mars.

The first thing to be attended to was the election of officers. Since the women held a majority, Marg. Crooks was elected head Mogul; and Violet Fey, her worthy assistant.

She made her cabinet as follows:

Marlond Balcer—Liquid dispenser. (When liquid arrives.)

Lois Zenor—Bureau of matrimony.

“Rudy” Easton—Head of Navy. (There is no water on Mars.)

Dorothy Schmidt—Bureau of proper clothes.

Willard Shedd—Chief housemover.

Alice Schroeder—Chief homewrecker.

Winifred Crary—Treasurer, (also caretaker of Marlond.)

Shadle, Sandeen—Poets.

Their first job was to compose a national anthem for “Uphigher”, and here it is:

“Nothing to do;

But we're plenty glad,

That on “Uphigher”

Heat ain't a fad.

Why! we know a place,

Where there's an inferno;

Down there for ice

They use cans of sterno.”

Some of the newer members and their jobs are:—

Loretta Anderson, language teacher; Lawrence Beckett, plumber; Theodora Berglund, tea hound; Chester Clark, ping pong coach; Richard Conway, truck driver; Beatrice Donaldson, coffee tester; Jeanette Flockhart, trapeze artist; Margaret Dutton, teacher; Geneva Flynn, undecided; Doris Gates, door-lady; Jeanette Hedlund, missionary to North Pole; Dorothy Honnold, husband deserter; Carroll Hulteen, toe-dancer; Laura Sundell, cook; Frank Sunstrom, a paperhanger; Clare Swartz, an actor; Florence Tillson, a waitress; Vivian Wilson, owner of the last horse; and Elizabeth Wirtz, who picks flowers off century plants to keep them blooming.

M. S. & C. S., '29.





Senior Mother Goose Rhymes

Marion Easton went to a dance
And when he came home, there was mud
on his pants.
But he firmly declares now (and will, ever-
more),
That the mud on his trousers came off the
dance floor.

Miss Lydia Rolston lived in a hall,
There were so many kids there, she couldn't
catch them all—
So she yanked and she spanked the
ones she could see,
Till now they're as good as good children
can be.

Marland Balcer's gone away,
He'll come back a later day;
And though he's wrinkled, old and fat,
We'll know him by his cute gray spats.

Morry Shadle,
Pudding and pie,
Kissed the girls,
And got a black eye.

But as Marg Crooks
Had seen it done,
Morris got
Another one.

O, list to the tale of the great football
team,
That wore with great pride the Red and
Green.
This team of big Seniors was largely com-
posed,
And that's why they made other teams in-
disposed.

In Physics lab, weird things happen at
night:
For then ions and molecules come out and
fight,
And shades of Pascal and Newton and
others
With Cunningham hob-nob as though they
were brothers.

Hippety-hop to the sandwich shop
To get a bite to eat
Back again to study then,
School-life can't be beat!

To gay young Miss Noble, heedless of
trouble,
"I want some fudge," said Fay,
Said Miss Noble, "Too bad, but there's none
to be had,
For Larry has been here today."

Van Ness has gone hunting, all decked out
in bunting,
And he scores of rabbits would slay;
But his net total of game was a bunny
quite tame,
For which he most dearly did pay.

Pity pedestrians when Martha Jean drives!
We'd not offer six-pence for all of their
lives,
For runners of fame and jumpers most
spry
Are hard put to dodge when "Mart" races
by.

Dear Clinton Sandeen,
(He's once more seen!)
Took a three-weeks' tour o'er the land.
But he came back to class,
And entered, alas!
With a yellow-hued admit in hand.

A dillar, a dollar
For Rex Sparks, our scholar.
The teachers nearly dropped;
He came to school on time one day!
(I guess his watch was stopped.)

Owen Graul was fond of fat,
His wife was fond of cream;
And so, between the two, they were
Both far from being lean.

Our debate team to Perry went,
Filled with laughter and glee;
They talked until late and won the debate
And cried "What good boys are we!"

Miss Stark and McCartney,
Who met at a party (?)
Were lovers at very first glance.
And now, when together,
They stare at each other
As if they were both in a trance.

Higgledy, piggledy, poor little Brad!
Miss Rolston says he has been very bad
For Solid Goemetry he knows not at all
And when she reproved him he started to
bawl.

Now hark to the tale of poor Willard Shedd
The grades on his report card were all
very red;
All his teachers refused to change their
bright color
And off he went crying, the poor little
feller!





William Rule

Martha J. Montgomery

William Jacobsen

Class Officers

WILLIAM RULE, President

This is the second time Billy has been honored with an office in his class, and you can see how fast he is rising, for now he is President! Billy is well known on the basketball floor, the football field, and the cinder track, but he is especially noted as a basketball star. Billy's coolness and grit have endeared him to all the fans, and his ready grin has made him a friend of everyone.

MARTHA JEAN MONTGOMERY, Vice-President

Mart, besides being extremely attractive in appearance, is witty and brilliant, and furthermore is extraordinary adept on the ivories. Because of this latter talent, she is so much in demand wherever music is needed that our poor little syncopator is nearly overworked. But she is always congenial and willing to "do her stuff," a fact which has won her many friends.

WILLIAM JACOBSEN, Treasurer

"Jakey" is a cute little blonde haired boy, who is well-liked by everyone. Bill knows just what to do and when to do it, so that he is known as a good business man. Because Bill's last name sounds as if his ancestors might have been born in Sweden, Bill is a target for many jokes. And the way he takes them is an everlasting credit to his good nature.



Juniors

2

On elevated seat he sits,
A wise and mighty guy,
And looks upon the crowds below
With wisdom in his eye.

Before the multitude he stands,
A famed athletic star.
As for the other athletes there,
He has them beat, by far.

He steps upon the well-lit stage;
The audience roars its joy.
An actor widely heralded,
Although he's but a boy.

Mischievous eyes and laughing grin,—
Cheerfulness is his rule.
An enviable title this bright lad bears:
"The most popular boy in school."

And who are all these famous boys
That grace our beautiful town?
Ah, they belong to that famous class:
The Juniors, of great renown.

And this holds true for all the girls,
For they are equally famed.
Yes, wherever you find the greatest ones,
You'll see the Juniors named.





Waldo Wheeler

Woodrow Frost

Sylvia Case

Earl Tesdahl

Class Officers

WALDO WHEELER, President

Waldo is a good example of an "all-around" student. He won the Goeppinger award a year ago; he plays football; he has taken part in several plays and operettas; and last, but not least, he makes a dignified and efficient president for the Sophomore class.

WOODROW FROST, Vice-President

Woodrow is one of those who break the monotony with their wit and good humor. He is very clever, and affords much entertainment wherever he is. In addition to his talent for drawing cartoons, he seems to be endowed with no small amount of dramatic ability.

SYLVIA CASE, Secretary

The Sophomores are a lucky group to have such a splendid girl as Sylvia for a class officer. Sylvia has made a name for herself in Boone High as an expert swimmer, a conscientious student, and above all because of her sunny disposition and friendliness.

EARL TESDAHL, Treasurer

Although the Sophomore class is not exactly burdened with this world's riches, we feel we should soon become entirely bankrupt were it not for the service of our worthy treasurer. Earl is very popular, especially with the girls; or so we judge by the groups of fair damsels who surround him in the corridors before and after school hours.



Sophomores

Today, the wide use of slogans by manufacturing companies has been the source of most successful advertising. A few of the well known slogans could be adopted by members of the Sophomore class. For instance:

- "Pure Brass"Jack Jenkins
- "Keep That School Girl Complexion".....Maxine Shaeffer
- "Good to the Last Drop".....Sylvia Case
- "You Can't Chew Out Its Flavor".....Russell Jennings
- "For the Man Who Cares".....Sigworth Hull
- "Chases Dirt, Protects the Home".....Ada Markman
- "Never Mind Your Whiskers; Think of Your Face".....Waldo Wheeler
- "Its Fine Work Has Made It".....Idabelle Anderson
- "A Luncheon Favorite".....Paul Crowner
- "Outshines Them All".....Robert Sutton
- "She Had to be Good to Get Where She Is".....Dorothea Fitzgerald
- "Goes a Long Way to Make Friends".....Iola Crawford
- "Built For Sleep".....James Sunstrom
- "As Tried and True as the Family Doctor".....Dorothea Moerke
- "Her Sparkling Beauty is an Inspiration".....Margaret Benson
- "Let Them Play as They Learn".....Edwin Zanderholm

